

Wabamun

www.wabamun.ca

Welcome

On behalf of the Village of Wabamun welcome! our friendly community, situated on Lake Wabamun, offers modern amenities and services for all ages in a picturesque natural setting. Lake Wabamun is known for the recreational activities it provides to residents and tourists, such as fishing, boating, water skiing, wind surfing, bird watching and hiking on the many trails. Boat launch facilities, picnic and playground areas and future water spray park make the Village a great family destination.

Area Overview

The Village of Wabamun is a community of 600 people located on the shores of Lake Wabamun. Wabamun is an Indian word meaning "Looking Glass" and it relates to the lake. The Village is adjacent to the Trans Canada Yellowhead Highway 16 and is 60 km west of the City of Edmonton. Immediately to the east is Wabamun Provincial Park and to the west is the TransAlta Utility Corporation's electrical generating plant.

Wabamun is a vibrant community and provides many amenities and services for its residents and tourists. Lake Wabamun is known for the recreational activities it provides like fishing for northern pike, yellow perch and lake whitefish; boating, water skiing, wind surfing and swimming. Boat launch facilities are provided and there are picnic, playground and swimming areas near the launch facilities.

Community Services

Community Services

Village of Wabamun

Box 240

5217 - 52 Street

Wabamun, Alberta T0E 2K0

Tel: (780) 892-2699

Fax: (780) 892-2669

Email: admin@wabamun.ca

Wabamun Public Library (780) 892-2713

Canada Post (780) 892-3626

Key Contacts for Business Development

Village of Wabamun

Box 240, Wabamun, Alberta T0E 2K0

Tel: (780) 892-2699

Fax: (780) 892-2669

Email: admin@wabamun.ca

Mr. Leagh Randle, Administrator

Development Officer

Email: lrandle@wabamun.ca

Mary Thomas, Events/Marketing/Economic Development

Email: mdthomas@wabamun.ca

Frederick Lindsay
Member of Legislative Assembly (MLA)
Stony Plain Constituency
#425, Legislature Building
10800 - 97 Avenue, Edmonton, Alberta T5K 2B6
Tel: (780) 415-9550
Fax: (780) 415-9411

Constituency Office:
#103, 5101 - 48 Street, Stony Plain, Alberta T7Z 1L8
Tel: (780) 963-1444
Fax: (780) 963-1730

Rob Merrifield
Member of Parliament (MP)
Yellowhead Constituency
House of Commons
Ottawa, Ontario K1A 0A6
Tel: (613) 992-1653
Fax: (613) 992-3459

Constituency Office:
Box 7887, Edson, Alberta T7E 1V9
tel: (780) 723-6068, 1-800-268-7117
Fax: (780) 723-5060

Community Lifestyle

RECREATION

Recreation facilities include: the Wabamun Jubilee Hall, paved nature trails, indoor arena, bowling lanes, seniors drop-in centre, parks and playgrounds, Coal Diamond Sports Park (slowpitch/fastball, hardball, soccer), Wabamun Arena, and Wabamun Lake Front Park.

Community Organizations

Local community organizations include: minor hockey, minor ball, bowling league, fun team scrimmage hockey, Wabamun & District Lions Club, Wabamun & District Seniors Society, Wabamun and District Agricultural Society, Wabamun & District Chamber of Commerce, Wabamun Needlecrafters Guild, Wabamun & District Museum Society and Mirror Image Choral Group.

Churches:

St. Joseph's Catholic Church (780) 967-5261
Mewassin United Church (780) 963-4745
Grace Bible Baptist Church (780) 892-3489
Zion United Church (780) 924-3351
St.Aidan & Ste.Hilda Anglican Church Rexboro (May - Oct.)

Annual Events

February - Wabamun Family Fun Skate

December - Light up Campaign

June - Wabamun Rodeo and Fun Daze

(rodeo events, beer garden and dance, pancake breakfast, parade, slowpitch tournament, children's activities, fireworks, music and entertainment)

Economic Base

Wabamun's economic base was traditionally coal, electric power generation, gravel, strip mining and water. The Village is moving towards an economy focusing on commercial and residential growth and tourism.

Economic Facts

The Village of Wabamun, which is strategically located to meet all your transportation needs, is open for business and the Village has exciting opportunities for entrepreneurs.

Residential Development

Developers will 'build to suit' in Wabamun's newest subdivision. Build the home of your dreams on a 58' to 60' x 130' fully serviced lot. Call the Village office at (780) 892-2699 for more information.

Education

Education

Wabamun is part of the Parkland School Division #70.

Wabamun Public School provides education for grades K to 9 (780) 892-2271.

Senior High students are bused to stony Plain.

Wabamun Playschool provides for children ages 3 and 4 years old.

Mother Earth's Children's Charter School (780) 892-7222.

Emergency Services

Emergency Services

Fire Protection - Wabamun is served by a volunteer fire department. **911**

Police Services - Wabamun is served by Stony Plain detachment of the Royal Canadian Mounted Police (RCMP). **911**

Non-emergencies call (780) 968-7267.

Ambulance Services - Wabamun is served by Parkland Ambulance Authority. **911**

Health Care

Wabamun's medical clinic is open Mondays 9:00 A.M. to 2:00 P.M., Wednesdays 9:00 A.M. to 7:00 P.M. and Fridays 9:00 A.M. to 4:00 P.M. The nearest hospital is Westview Health Centre in Stony Plain (780-968-3600) which provides Wabamun residents with hospital care, emergency and out-patient services, radiology and laboratory facilities, obstetrical services, physiotherapy services and consultant services by visiting specialists.

Key Contacts for Business Development

Municipal

Village of Wabamun
Box 240

Wabamun, Alberta T0E 2K0
Tel: 403-892-2699
Fax: 403-892-2699
Email: admin@wabamun.ca

Mayor Bill Purdy

Leagh Randle, Administrator
lrandle@wabamun.ca

Provincial (updated 2006)

Frederick Lindsay
Member of the Legislative Assembly [MLA]
Stony Plain Constituency
#425, Legislature Building
10800 - 97 Avenue, Edmonton, Alberta T5K 2B6
Tel: (780) 415-9550
Fax: (780) 415-9411

Constituency Office:
#103, 5101 48 Street
Stony Plain AB T7Z 1L8
Tel: 780-963-1444
Fax: 780-963-1730

Federal (updated 2006)

Rob Merrifield
Member of Parliament [MP]
Yellowhead Constituency
House of Commons
Ottawa, Ontario K1A 0A6
Tel: 613-992-1653
Fax: 613-992-3459

Constituency Office:
Box 7887
Edson, Alberta T7E 1V9
Tel: 780-723-6068; 1-800-268-7117
Fax: 780-723-5060

Location

The Village of Wabamun is located on the shores of Lake Wabamun in Parkland County. The Village is 64 km west of Edmonton and 32 km west of Stony Plain. The Village is adjacent to the trans Canada Yellowhead Highway 16. Immediately to the east is the Wabamun Provincial Park and to the West is the TransAlta Utilities Corporation's electrical generating plant.

Post Secondary Education

Post Secondary Education

Wabamun Residents have access to Edmonton-based post-secondary institutions such as the University of Alberta, Grant MacEwan College and Northern Alberta Institute of Technology. The Westerra Institute of Technology is located in Stony Plain, just 32 km east.

Taxation

	<u>Residential/Farmland</u>	<u>Non-Residential</u>
2006		
Municipal Tax Rate	6.446	14.046
Education - Alberta School Foundation Fund Tax Rate	3.59	6.5
Seniors Lodge Accommodation Tax Rate	.044	.044

Transportation

Air Services

Edmonton International Airport is approximately 95 km southeast of Wabamun Village. The International Airport is served by Air Canada, WestJet and other major international airlines.

Rail Services

CN Rail provides transcontinental service. Private spur lines are available.

Roadways

The Village of Wabamun is ideally located with easy access to:
East/West Yellowhead Highway 16, twinned throughout Alberta
South - Highway 2 via Highway 60
north - Highway 43 to Alaska, and Highway 2 via Highway 16

Bus Service

Greyhound bus service is available for passengers and freight.

Courier

Serviced by DHL and Purolator courier companies.

Utilities

Electrical Power

Epcor (780) 310-4300

Natural Gas

Direct Energy (780) 420-7838

Telephone

Telus (780) 310-2255

Water Supply

Wabamun's source of water is currently trucked from Stony Plain. Wells are being connected to the water treatment plant for future supply.

Waste Management

Sewage treatment is provided by a lagoon.

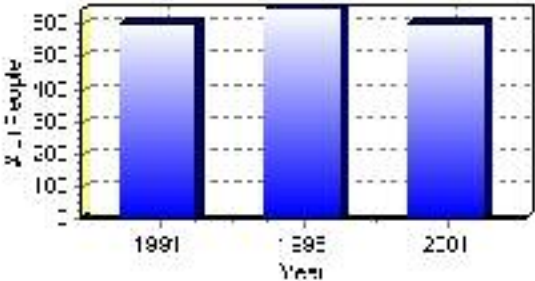
Population

Total Population

Population 2004*	601
Population 2003*	601
Population 2002*	601
Population 2001**	600
Population 2000*	645
Population 1996**	645
Population 1991**	600
Population % change 1991-1996	6.98%
Population % change 1996-2001	-7.32%

* Source: Official Population List, Alberta Municipal Affairs
** Source: Statistics Canada 1991, 1996, & 2001 Census

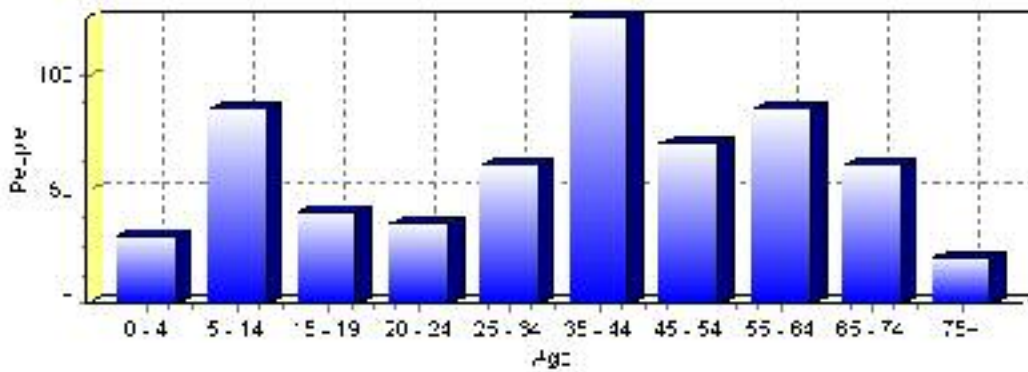
Total Population 1991-2001



Population by Age and Gender	1996 Male	1996 Female	1996 Total	2001 Male	2001 Female	2001 Total
Age 0 - 4	15	25	40	20	10	30
Age 5 - 14	70	45	115	35	50	85
Age 15 - 19	30	20	50	25	15	40
Age 20 - 24	25	15	40	20	15	35
Age 25 - 34	40	40	80	35	25	60
Age 35 - 44	60	45	105	65	60	125
Age 45 - 54	35	35	70	35	35	70
Age 55 - 64	25	25	50	45	40	85
Age 65 - 74	35	20	55	30	30	60
Age 75 and older	5	10	15	10	10	20
Total All Persons	350	295	645	315	290	605

Source: Statistics Canada 1996 & 2001 Census (numbers may not add up due to rounding)

Wabamun Population by Age Group (2001)

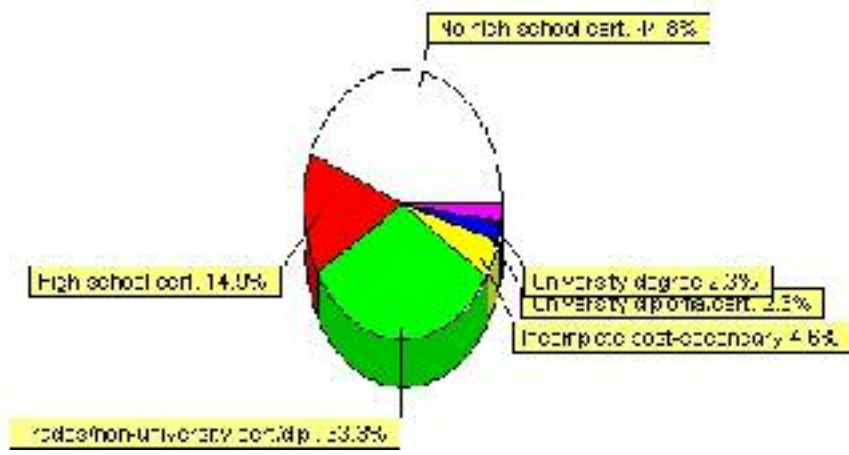


Education Statistics

Highest level of schooling for Population 20yrs and older	2001	%
People without high school certificates	195	44.83%
People with high school certificates	65	14.94%
People with trades or non-university certificate or diploma	145	33.33%
People with post-secondary education (not completed)	20	4.60%
People with university diploma/certificate	10	2.30%
People with university degree	10	2.30%
Total Population 20 years and older	435	100.00%

Source: Statistics Canada 2001 Census (numbers may not add up due to rounding)

Wabamun Highest Level of Schooling 2001



Population with Post Secondary Qualifications	1996	%	2001	%
Agriculture and biological sciences	0	0.00%	0	0.00%
Commerce, management and business administration	10	8.00%	20	12.50%
Educational, recreational and counseling services	0	0.00%	0	0.00%
Engineering and applied science tech. and trades	65	52.00%	95	59.38%
Engineering and applied sciences	0	0.00%	10	6.25%
Fine and applied arts	10	8.00%	10	6.25%
Health professionals, science and technologies	0	0.00%	10	6.25%
Humanities and related fields	10	8.00%	10	6.25%
Mathematics and physical sciences	0	0.00%	0	0.00%
Social sciences and related fields	10	8.00%	0	0.00%
Other and/or no specialization	0	0.00%	10	6.25%
Total people with post secondary qualifications	125	100.00%	160	100.00%
Females with post-secondary qualifications	45	36.00%	45	28.13%
Males with post-secondary qualifications	80	64.00%	115	71.88%

Source: Statistics Canada 1996 & 2001 Census (numbers may not add up due to rounding)

Labour Force

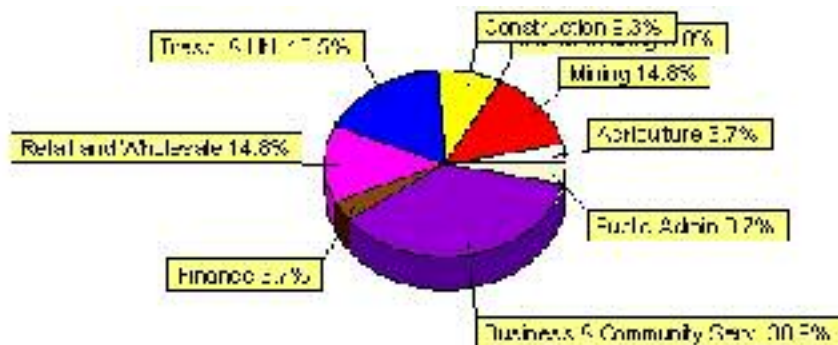
Labour force by activity	1996	2001
In the labour force, both sexes	325	270
Not in the labour force, both sexes	215	220
Total population 15 and over	440	490
Employed, both sexes	290	260
Unemployed, both sexes	35	15
Participation rate, both sexes	60.00%	55.00%
Unemployment rate, both sexes	10.00%	6.00%

Source: Statistics Canada 1996 & 2001 Census (numbers may not add up due to rounding)

Labour Force by Industry Division	1996	% of total	2001	% of total
Agriculture	0	0.00%	10	3.70%
Mining	80	25.40%	40	14.81%
Manufacturing	15	4.76%	0	0.00%
Construction	10	3.17%	25	9.26%
Transportation. & Utilities	65	20.63%	50	18.52%
Retail and Wholesale	60	19.05%	40	14.81%
Finance	10	3.17%	10	3.70%
Business & Community Services	45	14.29%	105	38.89%
Public Administration	10	3.17%	10	3.70%
Total All Industries	315	100.00%	270	100.00%

Source: Statistics Canada 1996 & 2001 Census (numbers may not add up due to rounding)

Wabamun Labour Force By Industry - 2001



Labour Force by Major Occupational Groups	1996	%	2001	%
Management occupations	15	4.69%	10	3.70%
Business, Finances and administrative occupations	45	14.06%	20	7.41%
Natural and applied sciences and related occupations	15	4.69%	10	3.70%
Health occupations	0	0.00%	0	0.00%
Occupations in social science; education; government and religion	10	3.13%	10	3.70%
Occupations in art; culture; recreation and sport	0	0.00%	0	0.00%

Sales and service occupations	95	29.69%	95	35.19%
Trades; transport; equipment operators and related occupations	85	26.56%	120	44.44%
Occupations unique to primary industry	40	12.50%	0	0.00%
Occupations unique to processing; manufacturing and utilities	15	4.69%	0	0.00%
Occupations not elsewhere classified	10	3.13%	0	0.00%
Total - All Occupations (major groups)	320	100.00%	270	100.00%
Females - All Occupations	110	34.38%	105	38.89%
Males - All Occupations	210	65.63%	165	61.11%

Source: Statistics Canada 1996 & 2001 Census (numbers may not add up due to rounding)

Income

Family Income (Number of Families)	1996	%	2001	%
less than \$19,999	20	12.90%	30	16.22%
\$20,000 - \$39,999	20	12.90%	30	16.22%
\$40,000 - \$59,999	70	45.16%	55	29.73%
\$60,000 and over	45	29.03%	40	21.62%
Total number of families	155	100.00%	155	83.78%
Average family income	\$56,902		\$57,183	
Median family income	\$53,661		\$53,061	

Source: Statistics Canada 1996 & 2001 Census (numbers may not add up due to rounding)

Household Income (Number of Households)	1996	%	2001	%
less than \$19,999	60	23.53%	55	22.92%
\$20,000 - \$39,999	45	17.65%	50	20.83%
\$40,000 - \$59,999	95	37.25%	70	29.17%
\$60,000 and over	15	5.88%	80	33.33%
Total number of households	255	100.00%	240	100.00%
Average household income	\$46,881		\$50,559	
Median household income	\$49,519		\$45,099	

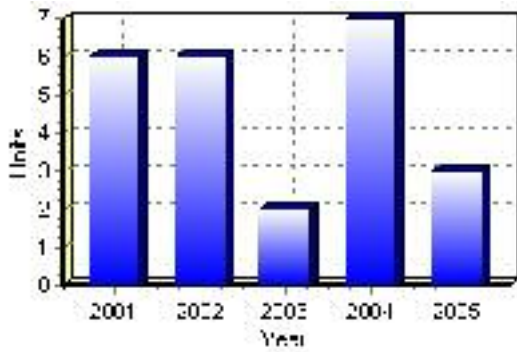
Source: Statistics Canada 1996 & 2001 Census (numbers may not add up due to rounding)

Building Permits

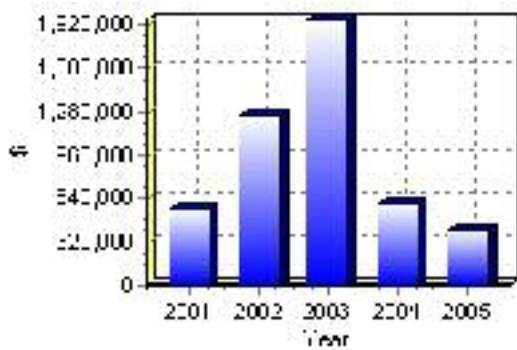
Total Building Permit Values	2001	2002	2003	2004	2005
Building Permits Value, Commercial	\$0	\$569,000	\$1,384,000	\$0	\$0
Building Permits Value, Industrial	\$0	\$0	\$31,000	\$0	\$0
Building Permits Value, Institutional	\$0	\$0	\$0	\$0	\$0
Building Permits Value, Residential	\$558,000	\$673,000	\$539,000	\$605,000	\$409,000
Building Permits Value, Total	\$558,000	\$1,242,000	\$1,954,000	\$605,000	\$409,000
Total Housing Starts	6	6	2	7	3

Source: Statistics Canada 2000-2004 Building Permits (numbers may not add up due to rounding)

Total Housing Starts



Value of Building Permits



Dwellings

Occupied Private Dwellings by Type	1996	% of total	2001	% of total
Apartments	15	5.77%	25	10.42%
Detached Duplexes	0	0.00%	0	0.00%
Movable Dwellings	40	15.38%	40	16.67%
Other single attached house	0	0.00%	0	0.00%
Row and semi-detached house	0	0.00%	5	2.08%
Single-detached house	180	69.23%	175	72.92%
Total number of occupied private dwellings	260	100.00%	240	100.00%
Private dwellings, owned	165	63.46%	140	58.33%
Private Dwellings, rented	90	34.62%	95	39.58%

Source: Statistics Canada 1996 & 2001 Census (numbers may not add up due to rounding)

Private Dwellings by Period of Construction	# of Dwellings	% of total
Period of construction, before 1946	35	14.89%
Period of construction, 1946 - 1960	30	12.77%
Period of construction, 1961 - 1970	60	25.53%
Period of construction, 1971 - 1980	60	25.53%
Period of construction, 1981 - 1990	40	17.02%
Period of construction, 1991 - 2001	10	4.26%
Total number of private dwellings constructed	235	100.00%

Source: Statistics Canada 2001 Census (numbers may not add up due to rounding)

Disclaimer: Information in this profile has been provided from a variety of external sources. Although every effort has been made to ensure the accuracy, currency and reliability of the content and data, AlbertaFirst.com Ltd. accepts no responsibility in this regard.

© AlbertaFirst.com Ltd., 2006.