

# Grande Prairie

[www.cityofgp.com](http://www.cityofgp.com)

## Welcome

Within Grande Prairie and region lies the promise for the future. Virtually everything needed is here and the door of opportunity is unbelievably wide. Capitalizing on strengths, we take what we have and make it better. Uncompromising quality, purity, and strength are our benchmarks.

Grande Prairie and area is a giant in opportunities. The greatest potential in this area is value-adding to local resources, with promise for diversification in all components. A partial list of agricultural opportunities include country vacations, ethanol production, fruit production and cultivation of Christmas trees and ornaments.

Potential in forestry lies on specialization such as the preparation of laminate beams or clear whites. The oil and gas industry is continually searching for products and services which provide time or cost-saving measures. Many new opportunities are emerging as legislation regarding the environment becomes more stringent. Service industries devoted to reforestation, cleanup and disposal are certain to grow.

The opportunities for creative and innovative enterprises are endless. Come experience "The Warmth of the North!"

Wayne Ayling  
Mayor of Grande Prairie

## Area Overview

The City of Grande Prairie, located 456 kilometres northwest of Edmonton, has emerged as the metropolitan service centre for all of northwest Alberta and northeast British Columbia, one of Canada's most promising regions. The region contains an abundance of both renewable and non-renewable resources ranging from agriculture, and forestry, to oil and natural gas.

Grande Prairie is a large City in northwest Alberta and has a population of over 40,000 people. The County of Grande Prairie, and the smaller towns of Sexsmith, Wembley, Hythe, and Beaverlodge, contribute an additional 20,000+ persons, for an overall total of more than 60,000 persons. As a service centre to northwest Alberta, the City serves a market area in excess of 200,000 people within a 200 km radius.

The City of Grande Prairie serves as the regional centre for business, service and shopping for northwest Alberta and northeast British Columbia. Modern and vibrant, the City exudes a confidence and vitality that has consistently encouraged strong industrial, economic, and residential growth over the past 25 years. Excellent infrastructure, transportation, and communication links, and the easy availability of a well-trained work force, invite easy investment. Urban and sophisticated, the City provides the full range of education, cultural, and recreation opportunities desired for quality living.

## Climate

### CLIMATE AND LANDFORM

Latitude.....55 degrees 11' N  
Longitude.....118 degrees 55' W  
Altitude.....2,190' (668 m)  
Land Area.....61.3167 Kilometres Square

Grande Prairie is situated amidst rolling prairie and aspen-poplar forest. The prairie to the north, east, and west, contain good farmland. The aspen/poplar forest to the south and west becomes coniferous as the land rises to the foothills and mountains. The

forest serves as a vast reservoir for the local pulp and lumber industries.

The mountains west of Grande Prairie are lower than in the rest of the province. This allows Pacific air to enter the region with less modification resulting in greater precipitation than is the case in southern and central Alberta. Grande Prairie is also subject to warm Chinook winds which moderate winter temperatures.

The combination of a longer than average (for its latitude) frost free periods, ample precipitation, and arable soils, explains why the Peace region is one of the most northerly and productive agricultural areas of North America.

Average number of frost free days...116 days

Average hours of sunlight.....2,109 annually

Average wind speed.14 km (8.5 m.p.h.) W.N.W.

Precipitation:.....295 mm average rainfall

.....180 cm average snowfall

Temperature range.-40 to +30 degrees celsius Ave. winter temperature.-12 degrees celsius Ave. summer temperature.+15 degrees celsius

## Community Services

### Municipal

Administration Offices:

10205 - 98 Street

P.O. Bag 4000

Grande Prairie, Alberta

T8V 6V3

Telephone: 780-538-0300

Fax: 780-539-1056

World-Wide Web access: <http://www.cityofgp.com>

The municipality is committed to an extremely high level of community services that provide recreational and cultural opportunities for all, as well as a safe environment in which to live and do business.

### Provincial

Many of the government of Alberta Departments are represented in the City of Grande Prairie. The Alberta Government employs about 480 workers in Grande Prairie and the immediate area.

### Federal

The Government of Canada employs about 300 workers in Grande Prairie region representing a wide variety of Government services.

## Community Lifestyle

### Recreation

Leisure services are considered essential in Grande Prairie. Leisure includes, but is not limited to, recreational, artistic, cultural, sport, and heritage pursuits. These pursuits have created a strong sense of community for Grande Prairie citizens.

Residents utilize a tremendous assortment of recreational facilities and activities due to the strong alliance between governments, business, schools, community groups, and an incredible volunteer corps! Here is just a small sampling of what this City has to offer: [a] programs and activities at the Dave Barr, Johnny MacDonald and Canada Games Arenas, indoor [the Leisure Centre] and outdoor pools [the Beach], curling rink, golf courses, curling rink, multi-purpose facility, natural arenas, playgrounds, tennis courts,

baseball diamonds, and an athletic park; [b] fitness, skating, and swimming, cultural [The Centre for Creative Arts], preschool and school holiday programs, outdoor activities; [c] 1,000 acres in Muskoseepi Park - the City's urban park features 22.5 kilometres of scenic trails winding virtually from the north end of the City to the south; [d] a very active theatre community with two homes - the Grande Prairie Regional College Theatre [487 seats] and Second Street Theatre [186 seats], the Prairie Art Gallery and the Pioneer Museum; [e] fishing at numerous lakes and rivers, abundant natural areas with cross-country and downhill skill trails, snowshoeing, bird-watching and wildlife observation opportunities; [f] racquetball, squash, bowling, skiing, martial arts, and a host of other activities offered at both private and public recreational facilities.

### **Community Organizations**

N/A

### **Religious Services**

The City of Grande Prairie is home to approximately 30 places of worship representing all major denominations, including the Alliance Church, Believers Full Gospel Assembly, Bethel Baptist Church, Christ Church Anglican, Christian Fellowship Assembly, Christian Reformed Church, Church of Christ, Church of Jesus Christ of Latter Day Saints, Church of the Nazarene, Evangelical Pentecostal Assembly, Faith Lutheran Church, Forbes Presbyterian Church, Hillcrest Mennonite Church, Kingdom Hall of Jehovah's Witnesses, McLaurin Baptist Church, Native Bible Fellowship Church, New Life Baptist Church, People's Full Gospel Assembly, Saint Joseph's Church, Saint Paul's United Church, Salvation Army Church, Sikh Temple, Swan City Christian Fellowship, Trinity Lutheran Church, and the Ukrainian Catholic Church of the Assumption.

### **Special Annual Events/Attractions**

Nearby attractions in the South Peace Region include the Crystal Lake Waterfowl Refuge, Evergreen Park, Grande Prairie Regional College, Muskoseepi Park, Nitehawk Ski Hill, Wapiti Nordic Ski Club, Prairie Gallery, Weyerhaeuser & Canfor Sawmill Tours, Second Street Theatre, Trumpeter Swans, Kleskun Hills Provincial Park [19 km], Spring Lake, Pipestone Creek Park [16 km], Saskatoon Lake [27 km], O'Brien Park, and Sturgeon Lake.

### **Annual Events:**

- Stampede - Rodeo & Chuckwagon Races
- Highland Games
- Canada Day Celebrations
- Heritage Day Festival
- Pari-mutual Racing
- Hot Air Balloon Competitions
- Grande Prairie Kennel Club Dog Show
- 4-H Achievement Day
- Northern Alberta Forestry Show

### **Hospitality**

#### ***Accommodation***

Accommodation ranges from first-class luxury hotels to campgrounds, and moderately-priced hotels and motels.

#### ***Restaurants***

Dining establishments, ranging from small eateries and fast food outlets, to large dining facilities with lounges and nightclubs offering live entertainment.

### **SHOPPING**

Retail and other commercial facilities in the City rival those of much larger centres. This is due in large part to the 200,000 market population served by Grande Prairie.

Grande Prairie's shopping is primarily contained within three major corridors (listed below). Major shopping centres include City Centre, the Prairie Mall & Area, and the Gateway Power Centre & Area. In addition, there are numerous strip malls and commercial/retail businesses located throughout the City that cater to a variety of needs and interests.

- City Centre – many specialty retail shops, restaurants, the Co-op Centre Mall, and Towne Centre Mall.
- Prairie Mall & Area – 100 Street North (anchored by Zellers) with approximately 150 stores and services; numerous strip malls, and specialty shops. Sears Canada Inc. & The Real Canadian Superstore are located in close proximity to the Prairie Mall.
- Gateway Power Centre & Area – 100 Avenue & 108th Street (Wapiti Road) West – Wal-Mart, Totem Building Supplies, Odeon Cineplex (10 Theatre complex), Staples, Future Shop Ltd., Visions Electronic Superstore, London Drugs Limited, Save-On-Foods, and numerous smaller chain retail stores. This centre is undergoing rapid development with new stores, restaurants and services opening continuously. Costco Wholesale Canada Ltd. is located in close proximity to the Gateway Power Centre.
- Shopping Centres And Malls
  - Gateway Power Centre:  
108 St. (Wapiti Road) & 100 Ave.
- London Drugs Plaza:  
115 Ave. & 100 St.
- Patterson Village Shopping Centre:  
9701 - 84 Ave.
- Prairie Mall:  
11801 - 100 St.
- Prairie Plaza:  
116 Ave. & 99 St.
- Southview Shopping Centre:  
80 Ave. & 100 St.
- The Marketplace:  
9831 - 100 Ave.
- Towne Centre Mall:  
9845 - 99 Ave.
- Speciality Retail Shops  
The City of Grande Prairie has a large selection of specialty retail and service establishments.

## Economic Base

Grande Prairie and area has a vibrant economy which has been developed over years of steady growth. Major economic sectors include agriculture, forestry, oil and gas, retail services, service industry, and regional services.

Grande Prairie is set amidst rolling prairie and aspen parkland forest. The prairie to the north, east, and west, contains good farmland. The aspen parkland forest to the south and west becomes coniferous as the land rises to the foothills and mountains. The forest serves as a vast reservoir for the local pulp and lumber industries.

A healthy business climate is responsible for the strong economic position that the city and area currently enjoys. Businesses in Grande Prairie range from small, one-person operations, to world scale operations, employing hundreds of staff.

The Grande Prairie area provides manufacturing components to each of the major industries [agriculture, forestry, oil & gas] and is the administrative centre for government and most industries in the Peace region. The area's economy is expected to grow substantially over the next five years, with employment opportunities increasing accordingly.

## Economic Facts

## Major Businesses Product/Services

- Canadian Forest Products Ltd. [Canfor]Sawmill
- Weyerhaeuser Canada Ltd. Bleached Kraft Pulp Mill
- Risley Manufacturing Builds forestry related attachments such as Rotosaw, Fellerbuncher Sawheads, Limmit Delimiters, Grapples, Processors and Forestry Cabs.
- Sterling Pulp Chemicals Sodium Chlorate Plant

## Financial Institutions

- Alberta Opportunity Company
- Alberta Treasury Branch [2]
- Avco Financial Services
- Bank of Montreal
- Bank of Nova Scotia
- Canadian Imperial Bank of Commerce
- Federal Business Development Bank
- Grande Prairie & District Savings and Credit Union Ltd.
- Royal Bank
- Toronto Dominion Bank

# Education

## GRANDE PRAIRIE PUBLIC SCHOOL DISTRICT #2357

10213 - 99 Street

Telephone: (780) 532-4491

Fax: (780) 539-4265

Homepage: <http://www.gppsd.ab.ca>.

The Grande Prairie Public School District #2357 is committed to fostering a learning community in which every student succeeds.

The District, a recognized leader in education, operates nine schools, serves approximately 5,173 students and is staffed by 254 highly qualified teachers. Following are some of the student services and programs offered in the District.

### Coordinated Assessment Services For The Exceptional (Case)

CASE is a specialized consultant team that provides assessment and consultation services to Zone 1 school jurisdictions. The specialist's role is to assist in the provision of educational services for severely emotionally disturbed, severely language disordered, and sensory impaired students. This program is based at Crystal Park School.

### Learning Disabilities

Learning disabilities programs are provided in all elementary schools.

### General Learning Resource Programs

This program is available to students at the elementary, junior, and senior high levels, in designated schools in the District, to accommodate students with general learning problems or severe learning disabilities.

### Integrated Occupational Program (IOP)

The IOP program assists students who have difficulty in learning and who require an alternative program to enhance their basic skills and their ability to enter into employment and/or further training. This three year provincial authorized program begins in Grade 10 and continues through Grade 12.

### Enrichment Program

Enrichment programs are in place for students at the elementary and secondary levels.

### **SPEAD Program**

The Child Behavior Resource Room is designed to accommodate elementary students experiencing problems with behavior or emotional upset in the regular classroom. Located at Swanavon School.

### **Computers**

Literacy programs and computer assisted instruction is extensive at the elementary school level and is offered on a complementary course basis in junior high. Computing Science courses are offered at the Composite High School and computers will be used extensively in other business education courses. Computers are now used in most core and complementary courses to enhance instruction.

### **French Immersion**

French Immersion is offered from Kindergarten to Grade 6 at Parkside School, from Grade 7 to Grade 9 at Montrose Junior High School, and from Grade 10 to Grade 12 at the Composite High School.

### **Music**

A full range of instrumental (band and strings) and choral programs are offered to students in Grade 5 to 12.

### **Bridge Network**

Outreach Program - helps students of high school age, who for whatever reason can't attend regular school.

### **Grande Prairie Public School District #2357 Schools**

- Grades Avondale Elementary.....Kindergarten-6
- Hillside Community.....Kindergarten-6
- Parkside Elementary.....Kindergarten-6
- Swanavon Elementary.....Kindergarten-6
- Aspen Grove.....Kindergarten-6
- Alexander Forbes.....Kindergarten-8
- Crystal Park.....Kindergarten-9
- Montrose Junior High.....7-9
- Composite High.....9-12

### **GRANDE PRAIRIE AND DISTRICT CATHOLIC SCHOOLS**

9902 - 101 Street

Telephone: (780) 532-3013

Fax: (780) 532-3430

Email: [cec@gpcsd28.ab.ca](mailto:cec@gpcsd28.ab.ca)

Homepage: <http://www.gpcsd28.ab.ca/>

The Grande Prairie and Catholic Schools serve the communities of Grande Prairie, Beaverlodge, Sexsmith, Spirit River and Fairview striving for academic excellence and religious values. It operates ten schools, serving approximately 2,800 students and is staffed by 205 highly qualified staff. Following are some of the student services and programs offered in the District.

### **Special Education**

Programs for students with learning disabilities are provided in all schools. Integrated Occupational Program (IOP) The IOP program assists students who require an alternative program to enhance their basic skills and their ability to enter into employment and/or further training. This five year provincially authorized program begins in Grade 8 and continues through Grade 12.

### **Academic And Creative Excellence**

Enrichment programs are in place for students at the elementary and secondary levels.

### **Technology**

Each school has well equipped Computer Labs that are used as productivity tools at the elementary and junior high school levels. Each library is computer automated, uses CD Rom storage and has Internet access. Computer Information Processing courses are offered at St. Joseph High School and St. Thomas More with Pentium Computers used extensively in other Career & Technology

courses. Computers are now used in most core and complementary courses to enhance instruction.

**Religious Education And Christian Family**

These programs are integrated into each school program.

**Reintegration Program**

In cooperation with the John Howard Society, this program is provided for 13-16 year old students who are at risk of leaving school or recent school leavers.

**French Immersion**

French Immersion is offered from Kindergarten to Grade 9 at Ecole St. Gerard and from Grade 10 to Grade 12 at St. Joseph High School.

**Band Instruction**

An instrumental program is offered to students in Grade 5 to 12.

**Grande Prairie and District Catholic Schools**

Grande Prairie R.C.S.S.D. No. 28

Grades

- St. Clement.....Kindergarten-6
- Ecole St. Gerard.....Kindergarten-9
- St. Patrick.....Kindergarten-6
- Kateri Mission.....Kindergarten-8
- Holy Cross.....Kindergarten-8
- St. Joseph High.....Grades 9-12
- St. Mary (Beaverlodge).....Kindergarten-9
- St. Mary's (Sexsmith).....Kindergarten-9
- Ste. Marie (Spirit River)....Kindergarten-8
- St. Thomas More (Fairview)...Kindergarten-12

**PRIVATE SCHOOLS - City of Grande Prairie**

Grades

- Hillcrest Christian.....Kindergarten-8
- Seventh Day Adventist.....Grades 1-9
- Grande Prairie Christian.....Kindergarten-12

The Grande Prairie Christian School desires to offer a first rate academic program in a Christian environment. They follow the Alberta curriculum enhanced by Christian materials and employ evangelical teachers with Alberta Certification. All the core subjects are offered, as well as a variety of complementary courses. Present enrolment is 115 students.

Hillcrest Christian School offers an excellent K-9 academic program with qualified teachers on staff. The school follows the Alberta curriculum with an emphasis on phonics, reading and writing skills, science and math. A high student/teacher ratio is maintained with the largest class having fifteen students. The school provides a music program using the Kodaly and Orff approaches to classroom music, incorporating the use of mallet instruments, recorders and voice. As well, each classroom (Grades 4-9) has its own computers for student/teacher use. A strong focus is placed on guiding the students in personal character development using Biblical principles and ongoing home/school communication. Current enrolment is forty students.

The Seventh Day Adventist Schools enrolls approximately thirty students.

**FRENCH SPEAKING PUBLIC SCHOOL**

10807 – 101 Rue

Telephone: 780-814-7945

Telecopieur: 780-814-6922

[Ecolegp@telusplanet.net](mailto:Ecolegp@telusplanet.net)

## Grades

- Ecole Nouvelle Frontiere.....Kindergarten-6

At Ecole Nouvelle Frontiere, you will find services that will allow your child to master the French language and to know his/her French cultural origins; but most of all, the means of developing his/her language, culture, and the capability of communicating in French with confidence.

## Emergency Services

### Fire Protection

The Grande Prairie Fire Department provides fire protection to the citizens of Grande Prairie and suppression services to a county area around Grande Prairie of 365 square miles. Department operations are delivered from the Eagar Fire Station located on the South Side (8111 Resources Road) and the Salmond Fire Station located on the North Side (11906 – 102 Street). The Fire Stations have a combined total of 55 full-time, 2 part-time, and 5 casual staff; plus 1 Chaplain.

The Fire Department offers a 911 service and a full emergency communications system including monitoring of fire alarms, dispatching Fire Department resources, answering after hours city complaints, and calls out of city departments. The Fire Department is also involved in disaster planning and preparation for major emergencies [Call 911 for emergencies].

### Police Services

The City of Grande Prairie, including the County of Grande Prairie, is policed by the Royal Canadian Mounted Police [RCMP] [Telephone: 780.538.5701, or call 911 for emergencies].

The Grande Prairie detachment operates on a 24 hour basis with four 12 hour shifts. Each shift operates with an average of 6 uniformed personnel, with one member assigned specifically to the rural area. The Detachment is supplemented by seven records personnel. There are also 2 public servants and 9 other municipal employees, who act as stenos, front counter, personnel, and court liaison officers. Radio telecoms and dispatch operates out of Edmonton. Policing is provided on a "zone policing post concept." All city complaints are taken by a city designated member. The concept is the same for rural complaints. The response time to any location within the City of Grande Prairie is 3-5 minutes.

Policing units include the Grande Prairie Municipal Detachment, City Traffic Section, Provincial Highway Patrol, General Investigation Section, Forensic Identification Section, Police Dog Section [1 member, 1 dog], Crime Prevention Unit, Provincial Provost Unit, and the Summer Bicycle Patrol Unit].

### Ambulance Services

In addition to a regular ambulance service [Telephone: 780.532.9511, the community is also serviced by excellent emergency response capabilities. The Northern LifeFlight program provides for the rapid evacuation of patients in need of specialized care. A team of physicians, paramedics, pilots, and ground crew join together to form one of the finest medivac services available.

The Hospital also extends its personal care through offering Lifeline, a 24-hour emergency response system. Over 200 subscribers benefit from this service knowing they can receive help by a simple touch of a button, linking them to their hospital.

## Health Care

Queen Elizabeth II Hospital is a fully-accredited, modern-day hospital committed to providing excellent patient care. It is a regional health care facility that employs over 1,000 people who, collectively, care for more than 10,000 patients and more than 100,000 out-patients annually.

A full spectrum of disciplines is offered by the Queen Elizabeth II Hospital. Medical care is provided by 30 family practitioners and 23 specialist physicians on staff. The Hospital offers a wide range of services from specialized surgery to coronary care, respiratory therapy, pediatric care, obstetrics, and rehabilitations. These many services are supplemented by visiting consultants from



Edmonton who provide outpatient services in specialty areas such as ENT, dermatology, rheumatology, pediatric cardiology, endocrinology, and gerontology. A full range of diagnostic, therapeutic, and support services are also available. The Clinical Laboratory at the Queen Elizabeth II Hospital acts as a regional consultant to other hospitals in the region.

## Key Contacts for Business Development

### Municipal

City of Grande Prairie  
10205 - 98 Street  
P.O. Bag 4000  
Grande Prairie, Alberta  
T8V 6V3  
Telephone: 780-538-0300  
Fax: 780-539-1056  
Email: [jbauman@cityofgp.com](mailto:jbauman@cityofgp.com)  
World-Wide Web access: <http://www.cityofgp.com>

Christopher Ayling  
Mayor  
[wayling@city.grande-prairie.ab.ca](mailto:wayling@city.grande-prairie.ab.ca)

Dave Gourlay  
City Manager  
[dgourlay@city.grande-prairie.ab.ca](mailto:dgourlay@city.grande-prairie.ab.ca)

Economic Development Department  
Telephone: 780-538-0311

Grande Prairie Chamber of Commerce  
10632 - 102 Avenue  
Grande Prairie, Alberta  
Telephone: 780-532-5340

Saskatoon Mountain Economic Development Authority [SMEDA]  
Telephone: 780-354-2122

### Provincial (Updated December 2004)

Nicole McMullan  
Industrial Development Officer  
Alberta Economic Development  
1401 Provincial Building  
10320 - 99 Street  
Grande Prairie, Alberta  
T8V 6J4  
Tel: 780-538-5230  
Fax: 780-538-5332  
Email: [nicole.mcmullan@gov.ab.ca](mailto:nicole.mcmullan@gov.ab.ca)

Bob Hall Regional Manager  
Address and telephone same as above  
Email: [bob.hall@gov.ab.ca](mailto:bob.hall@gov.ab.ca)

Mel Knight  
Member of Legislative Assembly [MLA]

Grande Prairie Smoky Constituency  
#311 Annex, 9718 - 107 Street  
Edmonton, Alberta  
T5K 1E4  
Tel: 780-415-9470  
Fax: 780-422-1671

Honourable Gordon Graydon  
Member of the Legislative Assembly [MLA]  
Grande Prairie - Wapiti Constituency  
#104 Legislature Building  
10800-97 Avenue  
Edmonton, Alberta  
T5K 2B6  
Tel: 780-415-4894  
Fax: 780- 415-4857

### **Federal (Updated October 2006)**

Chris Warkentin  
Member of Parliament [MP]  
Peace River Constituency  
House of Commons  
Ottawa, Ontario  
K1A 0A6

Constituency Office:  
#207, 10605 West Side Drive  
Grande Prairie, Alberta T8V 8E6

E-mail: [warkentin.c@parl.gc.ca](mailto:warkentin.c@parl.gc.ca)  
Website: [www.chriswarkentin.ca](http://www.chriswarkentin.ca)

Toll Free: 1-800-667-0456  
(780) 538-1677  
fax (780) 538-9257

Federal Business Development Bank [FDBD]  
Telephone: 780-532-8875

## **Location**

The City of Grande Prairie is located in the County of Grande Prairie #1, northwest Alberta. The distance from Grande Prairie to Edmonton, Alberta, is 45 minutes by air and 456 km [290 miles] by road, to Calgary is 90 minutes by air and 752 km [470 miles] by road and to Vancouver is 170 minutes by air and 1,320 km [825] miles by road.

Grande Prairie is located along the Gateway to the Alaska Highway. There are excellent communication and transportation services to keep the area businesses and residents in close contact with the rest of the world.

## **Post Secondary Education**

Grande Prairie Regional College offers educational, athletic, and cultural opportunities to Grande Prairie and South Peace Region residents. More than 2,000 students annually pursue university studies, careers and academic upgrading program at GPRC, and

some 8,000 students register in continuing education classes each year.

Exceptionally qualified faculty provide up to 2 years of baccalaureate degree courses in Arts, Commerce, Community Rehabilitation, Education, Fine Arts, Kinesiology, Physical Education and Science. The Bachelor of Science in Nursing is being offered at GPRC through the University of Alberta. The Bachelor of Arts, Bachelor of Commerce, and Bachelor of Science, Computing and Information Systems, may be completed at GPRC through Athabasca University. Negotiations are ongoing to expand the degree and career opportunities through partnerships with universities and technical institutes.

Diploma and certificate programs are offered for full or part-time study. Widely acclaimed programs in Business Administration, Computer Systems Technology, Early Childhood Development, Fine Arts, Industrial Maintenance, Office Administration, Power Engineering and Rehabilitation Services add skilled employees to the labour market each year. A Music Conservatory provides opportunities in music instruction for citizens of any age.

## Taxation

	<u>Residential/Farmland</u>	<u>Non-Residential</u>
<b>2004</b>		
Municipal Tax Rate	8.1730	18.1789
Education - Alberta School Foundation Fund Tax Rate	4.2389	6.4917
Education Opted Out Tax Rate	4.2389	6.4917
Seniors Lodge Accommodation Tax Rate	.0493	.0493

### PROVINCIAL CORPORATE TAXATION

Call 538-5121 and ask for Alberta Treasury, Corporate Tax Administration Branch 427-0712 (Edmonton).

### MUNICIPAL TAXES

To obtain information regarding municipal business and property taxes call 538-0315.

2002 Business Revitalization Zone (BRZ)

Tax BRZ rates are 2.1% of assessed annual rental.

Property Tax

2002 Assessment

Land: Market value

Buildings: Market value

Machinery and Equipment: 77% of depreciated replacement cost

Tax Amounts Levied - May/2002

Low Density Residential.....\$19,604,952.78

Non Residential.....16,572,152.81

Other Residential..... 2,288,818.72

Grant Municipal/Municipal Only....59,029.82

Machinery & Equipment.....529,048.36

Total Levied.....\$39,054,002.49

Local Improvement Charges.....845,005.50

BRZ Levy.....156,609.60

Total Billed.....\$40,055,617.59

# Transportation

## Air Service

The Grande Prairie Regional Airport, located 6.5 km west of the downtown centre, is operated and maintained by the City of Grande Prairie. The airport provides daily scheduled Air Carrier Service, including aircraft refuelling, parking, maintenance and storage. Other services include aircraft/helicopter commercial operations/charters, rental cars, taxi, limousine service and cafeteria amenities. As well, air cargo can be shipped to any part of the world.

Canadian Regional, West Jet and Peace Air currently offer flights to major centres in Alberta and British Columbia., including Vancouver, Edmonton, and Calgary. Non-stop service between Grande Prairie, Edmonton and Calgary is provided.

## Rail Service

Alberta RailNet provides freight service to Grande Prairie. The railway links Grande Prairie to the ports of Vancouver, Prince Rupert, Churchill, Thunder Bay, and Hay River in the Northwest Territories.

The Alberta Resources Railway runs between Grande Prairie and Hinton, where it joins the CN main line. The railway was originally built to accelerate the development of natural resources such as coal, timber, and petroleum, in the area between Grande Prairie and the CN main line.

## Highways

Highway 43 provide access to Edmonton and southern Alberta. Highway 2 and Highway 35 (the Mackenzie Highway) lead to the Northwest Territories.

Highway 43 also goes west to Dawson Creek, British Columbia, and joins the Alaska Highway going north, the John Hart Highway going south to Prince George, and the ports of Prince Rupert and Vancouver.

Highway 40 heads due south from Grande Prairie to connect with the Yellowhead Highway just east of the entrance to Jasper National Park. The hard top of this highway was completed in July, 1996.

## Trucking Firms

The City is well served by numerous freight and resource related industry trucking companies.

## Bus Services

Greyhound provides regularly scheduled passenger and courier service to the City's bus depot. A number of charter bus companies also operate out of Grande Prairie.

Grande Prairie also has a Public Transit bus system.

## Couriers and Taxis

Numerous taxis and courier companies serve the city and the surrounding region.

# Utilities

## Electrical Power

ATCO Electric  
9717 97 Avenue  
Grande Prairie, Alberta  
Telephone: 1-800-668-2248

## Natural Gas

ATCO Gas  
8801 112 Street  
Grande Prairie, Alberta  
T8V 6A4  
Gas Customer Assistance Centre  
Telephone: 310-5678 (toll free) or 1-888-511-7550  
48 hours notice is required for service

### **Telephone**

Telus  
General Customer Service  
Telephone: 1-888-811-2323  
Business Customers  
Telephone: 1-888-811-2828

### **Water Supply & Wastewater Treatment**

Contact Aquatera Utilities Inc. [Telephone: 780-538-0340] for information on the water supply and user rates.

### **Waste Management**

Industrial and commercial solid waste management [includes apartments and condominiums 4+ units] is provided by private collection by contractual agreement, while urban residential waste management [includes three units or less] is provided by the municipality by weekly collection. There is a monthly charge. Contact Aquatera Utilities Inc. at 780-538-0348.

The City of Grande Prairie has a Waste Diversion Program, designed to reduce the level of waste going into the landfill. The City also encourages private sector recycling initiatives and provides a recycling depot collection system. Contact Aquatera Utilities Inc. at 780-538-0452.

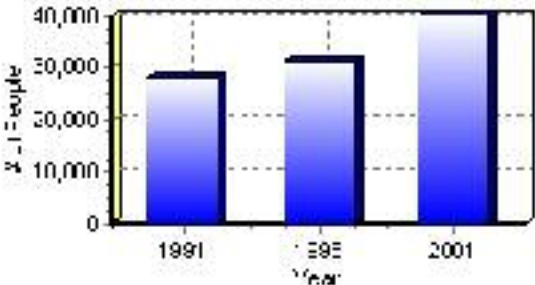
# Population

## Total Population

Population 2004*	40,226
Population 2003*	40,226
Population 2002*	36,983
Population 2001**	36,985
Population 2000*	35,962
Population 1996**	31,140
Population 1991**	28,271
Population % change 1991-1996	9.21%
Population % change 1996-2001	15.80%

\* Source: Official Population List, Alberta Municipal Affairs  
\*\* Source: Statistics Canada 1991, 1996, & 2001 Census

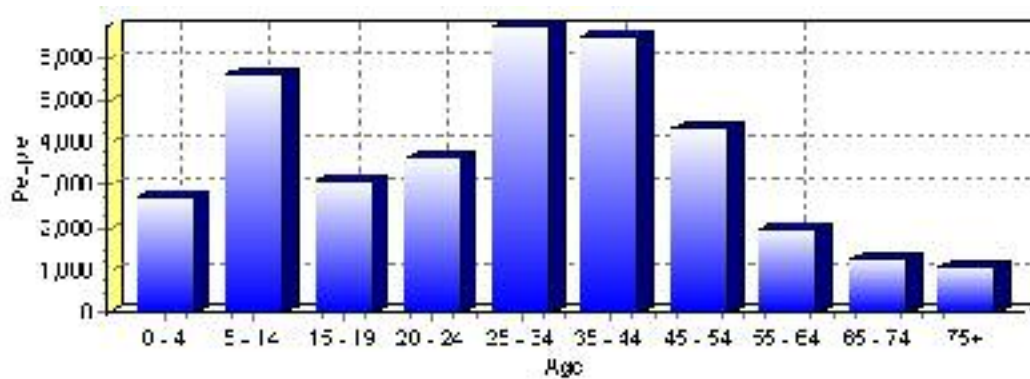
## Total Population 1991-2001



Population by Age and Gender	1996 Male	1996 Female	1996 Total	2001 Male	2001 Female	2001 Total
Age 0 - 4	1,340	1,275	2,615	1,390	1,360	2,750
Age 5 - 14	2,555	2,455	5,010	2,835	2,755	5,590
Age 15 - 19	1,180	1,160	2,340	1,535	1,580	3,115
Age 20 - 24	1,575	1,435	3,010	1,880	1,740	3,620
Age 25 - 34	3,140	3,030	6,170	3,525	3,205	6,730
Age 35 - 44	2,885	2,595	5,480	3,305	3,170	6,475
Age 45 - 54	1,495	1,445	2,940	2,200	2,120	4,320
Age 55 - 64	800	805	1,605	1,005	980	1,985
Age 65 - 74	510	590	1,100	575	700	1,275
Age 75 and older	335	550	885	420	685	1,105
Total All Persons	15,810	15,330	31,140	18,675	18,310	36,985

Source: Statistics Canada 1996 & 2001 Census (numbers may not add up due to rounding)

### Grande Prairie Population by Age Group (2001)

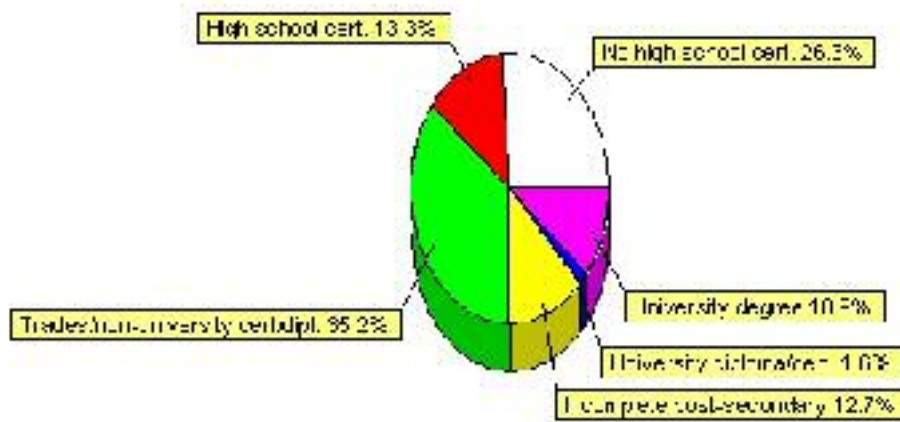


# Education Statistics

Highest level of schooling for Population 20yrs and older	2001	%
People without high school certificates	6,590	26.29%
People with high school certificates	3,340	13.32%
People with trades or non-university certificate or diploma	8,820	35.18%
People with post-secondary education (not completed)	3,185	12.70%
People with university diploma/certificate	400	1.60%
People with university degree	2,725	10.87%
Total Population 20 years and older	25,070	100.00%

Source: Statistics Canada 2001 Census (numbers may not add up due to rounding)

## Grande Prairie Highest Level of Schooling 2001



Population with Post Secondary Qualifications	1996	%	2001	%
Agriculture and biological sciences	450	4.79%	435	3.60%
Commerce, management and business administration	2,165	23.04%	2,665	22.06%
Educational, recreational and counseling services	1,040	11.07%	1,315	10.89%
Engineering and applied science tech. and trades	2,955	31.45%	3,890	32.20%
Engineering and applied sciences	320	3.41%	345	2.86%
Fine and applied arts	305	3.25%	515	4.26%
Health professionals, science and technologies	1,150	12.24%	1,540	12.75%
Humanities and related fields	330	3.51%	325	2.69%
Mathematics and physical sciences	70	0.75%	190	1.57%
Social sciences and related fields	575	6.12%	855	7.08%
Other and/or no specialization	10	0.11%	0	0.00%
Total people with post secondary qualifications	9,395	100.00%	12,080	100.00%
Females with post-secondary qualifications	4,465	47.53%	5,775	47.81%
Males with post-secondary qualifications	4,930	52.47%	6,305	52.19%

Source: Statistics Canada 1996 & 2001 Census (numbers may not add up due to rounding)



## Labour Force

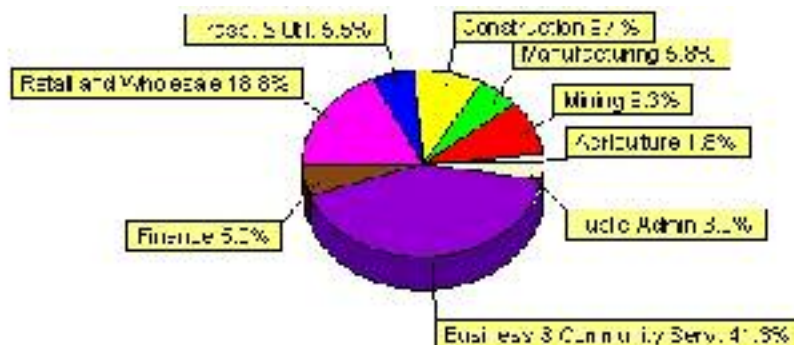
Labour force by activity	1996	2001
In the labour force, both sexes	18,495	22,810
Not in the labour force, both sexes	4,655	5,340
Total population 15 and over	23,150	28,155
Employed, both sexes	17,070	21,550
Unemployed, both sexes	1,425	1,260
Participation rate, both sexes	80.00%	81.00%
Unemployment rate, both sexes	8.00%	6.00%

Source: Statistics Canada 1996 & 2001 Census (numbers may not add up due to rounding)

Labour Force by Industry Division	1996	% of total	2001	% of total
Agriculture	310	1.70%	405	1.78%
Mining	1,470	8.05%	2,110	9.30%
Manufacturing	1,280	7.01%	1,310	5.77%
Construction	1,445	7.91%	2,140	9.43%
Transportation. & Utilities	1,390	7.61%	1,240	5.46%
Retail and Wholesale	3,895	21.32%	4,270	18.81%
Finance	745	4.08%	1,140	5.02%
Business & Community Services	6,280	34.37%	9,375	41.31%
Public Administration	630	3.45%	690	3.04%
Total All Industries	18,270	100.00%	22,695	100.00%

Source: Statistics Canada 1996 & 2001 Census (numbers may not add up due to rounding)

### Grande Prairie Labour Force By Industry - 2001



Labour Force by Major Occupational Groups	1996	%	2001	%
Management occupations	1,450	7.94%	2,045	9.01%
Business, Finances and administrative occupations	3,170	17.35%	3,560	15.69%
Natural and applied sciences and related occupations	695	3.80%	1,145	5.05%
Health occupations	770	4.21%	1,010	4.45%
Occupations in social science; education; government and religion	1,110	6.08%	1,580	6.96%
Occupations in art; culture; recreation and sport	385	2.11%	350	1.54%

Sales and service occupations	5,455	29.86%	6,005	26.47%
Trades; transport; equipment operators and related occupations	3,225	17.65%	4,595	20.25%
Occupations unique to primary industry	1,040	5.69%	1,640	7.23%
Occupations unique to processing; manufacturing and utilities	970	5.31%	765	3.37%
Occupations not elsewhere classified	220	1.20%	120	0.53%
Total - All Occupations (major groups)	18,270	100.00%	22,690	100.00%
Females - All Occupations	8,230	45.05%	10,235	45.11%
Males - All Occupations	10,040	54.95%	12,460	54.91%

Source: Statistics Canada 1996 & 2001 Census (numbers may not add up due to rounding)

---

## Income

<b>Family Income (Number of Families)</b>	<b>1996</b>	<b>%</b>	<b>2001</b>	<b>%</b>
less than \$19,999	440	6.25%	790	10.19%
\$20,000 - \$39,999	1,340	19.02%	1,590	20.50%
\$40,000 - \$59,999	2,055	29.17%	1,940	25.02%
\$60,000 and over	3,210	45.56%	3,905	50.35%
Total number of families	7,045	100.00%	8,225	106.06%
Average family income	\$62,339		\$69,854	
Median family income	\$57,134		\$65,320	

Source: Statistics Canada 1996 & 2001 Census (numbers may not add up due to rounding)

<b>Household Income (Number of Households)</b>	<b>1996</b>	<b>%</b>	<b>2001</b>	<b>%</b>
less than \$19,999	1,635	15.09%	1,675	12.51%
\$20,000 - \$39,999	2,455	22.66%	2,175	16.25%
\$40,000 - \$59,999	2,675	24.69%	2,590	19.35%
\$60,000 and over	995	9.18%	6,950	51.92%
Total number of households	10,835	100.00%	13,385	100.00%
Average household income	\$54,749		\$66,438	
Median household income	\$49,865		\$61,068	

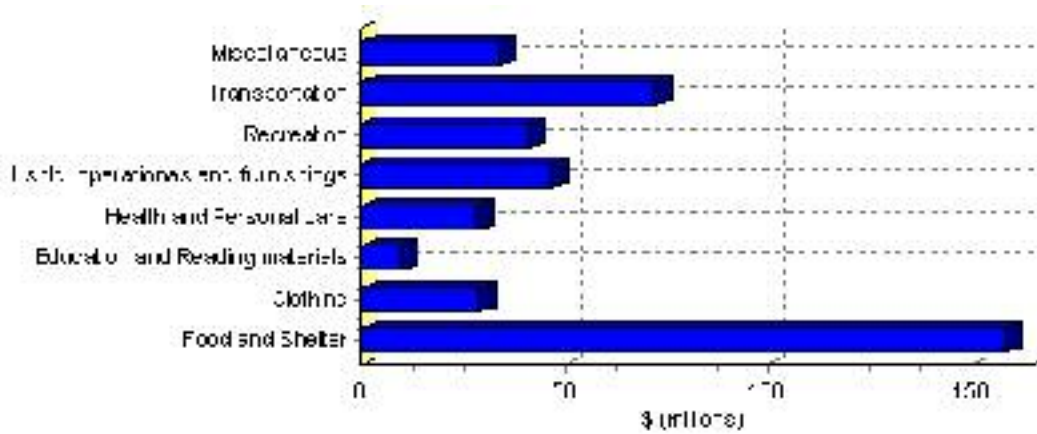
Source: Statistics Canada 1996 & 2001 Census (numbers may not add up due to rounding)

# Family Expenditure

Expenditure Category	1992	% of total	1996	% of total
Food and Shelter	\$118,259,680	36.59%	\$158,404,104	37.68%
Clothing	\$22,815,815	7.06%	\$28,812,177	6.85%
Education and Reading materials	\$7,428,750	2.30%	\$9,955,619	2.37%
Health and Personal care	\$19,804,485	6.13%	\$28,380,420	6.75%
Hshld. operations and furnishings	\$35,805,980	11.08%	\$46,891,626	11.15%
Recreation	\$28,143,735	8.71%	\$41,356,993	9.84%
Transportation	\$65,803,310	20.36%	\$72,451,405	17.23%
Miscellaneous	\$25,110,250	7.77%	\$34,176,094	8.13%
Total Current Consumption	\$323,245,095	100.00%	\$420,428,438	100.00%
Total # of Households	9,860		10,838	
Average Consumption per Household	\$32,783		\$38,792	

Source: Statistics Canada Family Expenditure Survey 1992 & 1996 (numbers may not add up due to rounding).

## Grande Prairie Family Expenditures (1996)

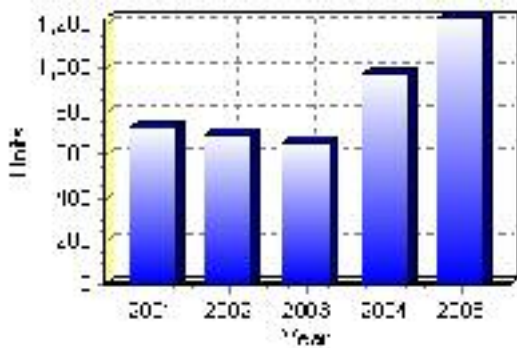


# Building Permits

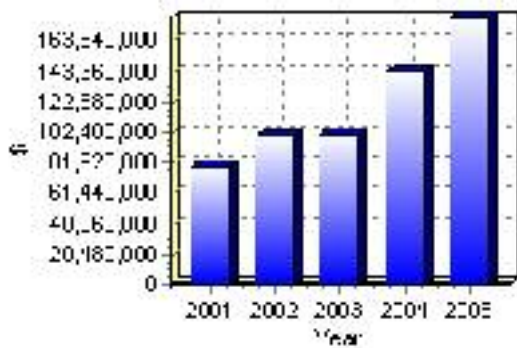
Total Building Permit Values	2001	2002	2003	2004	2005
Building Permits Value, Commercial	\$14,465,000	\$23,811,000	\$34,426,000	\$35,937,000	\$33,005,000
Building Permits Value, Industrial	\$2,574,000	\$2,879,000	\$2,666,000	\$6,156,000	\$6,630,000
Building Permits Value, Institutional	\$3,205,000	\$7,232,000	\$2,164,000	\$8,462,000	\$25,186,000
Building Permits Value, Residential	\$59,769,000	\$65,219,000	\$61,697,000	\$92,819,000	\$114,376,000
Building Permits Value, Total	\$80,013,000	\$99,141,000	\$100,953,000	\$143,374,000	\$179,197,000
Total Housing Starts	724	697	656	975	1,231

Source: Statistics Canada 2000-2004 Building Permits (numbers may not add up due to rounding)

## Total Housing Starts



## Value of Building Permits



## Dwellings

<b>Occupied Private Dwellings by Type</b>	<b>1996</b>	<b>% of total</b>	<b>2001</b>	<b>% of total</b>
Apartments	2,470	22.80%	2,985	22.31%
Detached Duplexes	150	1.38%	175	1.31%
Movable Dwellings	175	1.62%	250	1.87%
Other single attached house	0	0.00%	20	0.15%
Row and semi-detached house	1,180	10.89%	1,250	9.34%
Single-detached house	6,855	63.27%	8,700	65.02%
Total number of occupied private dwellings	10,835	100.00%	13,380	100.00%
Private dwellings, owned	6,795	62.71%	8,735	65.28%
Private Dwellings, rented	4,040	37.29%	4,645	34.72%

Source: Statistics Canada 1996 & 2001 Census (numbers may not add up due to rounding)

<b>Private Dwellings by Period of Construction</b>	<b># of Dwellings</b>	<b>% of total</b>
Period of construction, before 1946	240	1.79%
Period of construction, 1946 - 1960	845	6.32%
Period of construction, 1961 - 1970	1,780	13.30%
Period of construction, 1971 - 1980	4,405	32.92%
Period of construction, 1981 - 1990	2,365	17.68%
Period of construction, 1991 - 2001	3,745	27.99%
Total number of private dwellings constructed	13,380	100.00%

Source: Statistics Canada 2001 Census (numbers may not add up due to rounding)

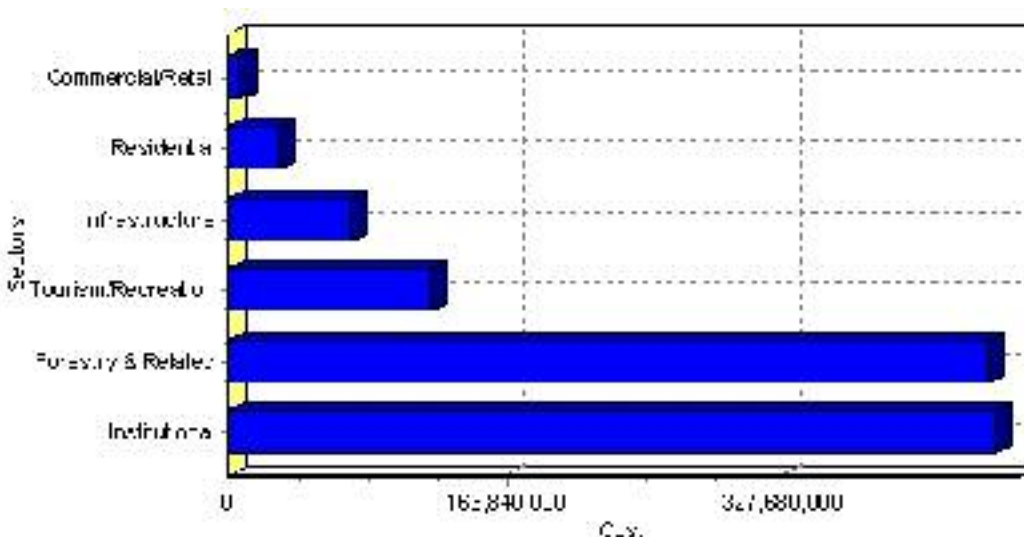
# Projects

## Summary of Projects in Grande Prairie as of September 2006

Project Sector	Number of Projects	Project Cost
Institutional	15	\$452,500,000
Forestry & Related	2	\$448,000,000
Tourism/Recreation	5	\$119,600,000
Infrastructure	10	\$71,800,000
Residential	4	\$29,500,000
Commercial/Retail	2	\$7,600,000
Total	38	\$1,129,000,000

This inventory lists projects in Alberta that have recently been completed, are under construction, or are proposed to start construction. Not all projects are listed due to reasons of confidentiality and/or due to information not being available at the time of printing. Project data is obtained from public information sources, where possible, this data has been verified with the project proponent/developer, users of the Inventory may wish to confirm project data with the proponent/developer. The inventory does not breakdown project expenditures by any given year. The cost of a project is the value of expenditures expected over all phases of project construction, which may span over two or more years. Cost of projects listed in the Inventory are estimated values only. Source: Alberta Economic Development, 2004.

## Value of Projects by Sector (as of September 2006)



Project Status	Number of Projects	Project Cost
Announced	3	\$62,400,000
Completed	4	\$26,200,000
Proposed	22	\$510,700,000
Under Construction	9	\$529,700,000
Total	38	\$1,129,000,000

This inventory lists projects in Alberta that have recently been completed, are under construction, or are proposed to start construction. Not all projects are listed due to reasons of confidentiality and/or due to information not being available at the time of printing. Project data is obtained from public information sources, where possible, this data has been verified with the project proponent/developer, users of the Inventory may wish to confirm project data with the proponent/developer. The inventory does not breakdown project expenditures by any given year. The cost of a project is the value of expenditures expected over all phases of project construction, which may span over two or more years. Cost of projects listed in the Inventory are estimated values only. Source: Alberta Economic Development, 2004.

## Largest Projects in Grande Prairie as of September 2006

Company Name	Project Description	Project Location	Project Cost	Construction Schedule	Status
Ainsworth Lumber Co.	OSB Plant Expansion	Grande Prairie	\$288,000,000	2005-2007	Under Construction
Peace Country Health Region	New Acute Care Hospital	Grande Prairie	\$265,000,000	-	Proposed
Weyerhaeuser	Pulp Mill Upgrade (Boiler Re-build)	Grande Prairie	\$160,000,000	2005-2007	Under Construction
Northern Alberta Institute of Technology (NAIT) / Northern Lakes College	New Trades and Technology Campus	Grande Prairie	\$55,800,000	2006-2008	Announced
Peace Country Wellness Facility Society	Recreational Multiplex (Fieldhouse, Pools and Indoor Track plus Commercial Space)	Grande Prairie	\$52,000,000	-	Proposed
City of Grande Prairie	Aquatics Centre	Grande Prairie	\$32,000,000	-	Proposed
Prairie Art Gallery and Grande Prairie Public Library	'Montrose Centennial Centre' New Library and Art Gallery	Grande Prairie	\$26,100,000	-	Proposed
Evergreen Park	Facility Expansion	Grande Prairie	\$25,000,000	2006-2010	Under Construction
Aquatera	Community Energy System	Grande Prairie	\$19,000,000	-	Proposed
Alberta Infrastructure and Transportation*	Elementary / Jr High School (K to Grade 9)	Grande Prairie	\$17,600,000	2006-2007	Under Construction

Disclaimer: Information in this profile has been provided from a variety of external sources. Although every effort has been made to ensure the accuracy, currency and reliability of the content and data, AlbertaFirst.com Ltd. accepts no responsibility in this regard.

© AlbertaFirst.com Ltd., 2006.