

# Didsbury

[www.didsbury.ca](http://www.didsbury.ca)

## Welcome

Welcome to our community. We hope the information contained within this profile is useful. If additional information is required, please contact our representative from the "Key Contacts" section.

## Area Overview

As a major agriculture service centre located in the heart of mixed farming country, Didsbury is ideally situated to provide the luxury of country living with outstanding up to date, "urban" facilities.

Didsbury's prime location near Highway 2 and close proximity to Calgary and Red Deer is viewed very favourably by residents. The Town offers a good lifestyle and lower costs than major urban centres.

Excellent education and recreation facilities are available. A one hour drive will take fishermen to the best rivers and lakes in Alberta, rafters and canoeists to wild or moderate rivers, and campers to some of the most scenic spots in the country.

## Community Services

### Municipal

[Town of Didsbury](#)

Box 790

Didsbury, Alberta

T0M 0W0

Tel: 403-335-3391

Fax: 403-335-9794

Municipal Library

Provincial

Alberta Hail & Crop Insurance

Provincial Court

### Federal

Post Office

Royal Canadian Mounted Police ☐

## Community Lifestyle

### Recreation

The Didsbury Aquatic Centre has a 4-lane indoor pool with a 150 foot waterslide and hot

tub. The Memorial Complex has two ice surfaces[ 1 regulation and 1 leisure] and the Curling Club has 4 sheets of ice, 2 viewing areas, kitchen/concession area, bar/lounge, and 2 meeting rooms. There are 13 parks and playgrounds, 6 ball diamonds, 4 tennis courts, a 9-hole golf course with grass greens, putting greens, a club house with a Pro-shop, kitchen/restaurant, and a bar/lounge. There are 8 lanes of lawn bowling greens with a clubhouse, kitchen and meeting area. There are also 3 fields for soccer.

Rosebud *Campground* has 28 stalls, 21 of which have electricity. It is operated by the Town of Didsbury.

### **Community Organizations**

*Community organizations include* the Chamber of Commerce, Didsbury & District Recreation Board, Didsbury Family & Community Support Services, Didsbury Lifeline Committee, Project Read Soon, Student Employment Services, Mountain View Regional Emergency Services, Didsbury Municipal Library, Didsbury and District Historical Society - Museum, Agricultural Society, and the Volunteer Fire Department.

### **Religious Services**

Bergthal Mennonite Church  
Zion Evangelical Missionary Church  
Koinonia Christian Education Society  
Redeemer Lutheran Church  
St. Anthony's Catholic Church  
Knox United Church  
Chinook Winds Christian Centre  
St. Cyprian's Anglican Church

### **Special Annual Events/Attractions**

Didsbury Museum  
Restored Train Station  
Numerous Sporting Events

### **Hospitality**

#### Accommodation

The Didsbury Inn  
The Didsbury Motel  
Didsbury Super 8 Motel  
Westway Hideaway- Bed & Breakfast

### **Restaurants**

Macy's Family Restaurant  
Didsbury Inn Dining Room  
Country Nook Restaurant  
Dragon Palace  
Steve's Place  
K & W Drive In  
Sunflower Deli  
Wheatland Restaurant  
Subway

## Economic Base

Agriculture and tourism are two of the most important industries in the area.

## Economic Facts

### Major Businesses Products/Services

Shur Gain Feeds [livestock], Oat Groats, Dog Food,  
Foothills Dairy Products Cheddar Cheese, Camembert, Brie, Quark  
Champion Hay Processors Cubed hay [Exporter to Japan]  
Contemporary Graphics Ltd. Commercial Printing, Weekly Newspaper

### Financial Institutions:

Alberta Treasury Branch  
Royal Bank of Canada  
Mountain View Credit Union

## Education

Didsbury is part of the Chinook's Edge School Division #73, located in Innisfail [ Tel: 403-227-7070]

### Daycare/Nursery

Kidsbury Daycare

### Public

Schools in Didsbury include Ross Ford Elementary School [1-4], Westglen School [5-8], and Didsbury High School [9-12].

### Private

Koinonia Christian Education Society

## Emergency Services

### Fire Protection

Didsbury has a volunteer fire department with 24 members, two pump trucks, one tanker and an emergency response unit [Tel: 403-335-3333].

### Police Services

The Royal Canadian Mounted Police [RCMP] has an 8-member local detachment [Tel: 403-335-3382].

### Ambulance Services

Mountain View Regional Emergency Services provides emergency services to Didsbury and Mountain View County. Emergency air ambulance services are available from Calgary [Tel: 403-335-3300].

## Health Care

Didsbury is located in Regional Health Authority 5.

The Didsbury Hospital, built in 1982, serves the southern portion of Mountain View County. It provides 24-hour medical, nursing, emergency, obstetrical and pediatric service as well as elective surgery. The 135 bed hospital employs 225 health care professionals, has acute care beds, 60 auxiliary care beds and 40 nursing home beds.

Extended health care is provided through the Mountain View Health Unit under the coordinated home care program. The Health Unit also provides pre and postnatal care and speech pathology.

In addition to these larger institutions, access to care is augmented by the Didsbury Dental Clinic and the College Green Medical Centre.

Kinsmen Manor is a senior citizen residence with a number of self-contained units for independent living. Other senior citizen homes include College Green Apartments, Didsbury Manor, Mount View Foundation and Villas on the Green.

## Key Contacts for Business Development

### Municipal

[Town of Didsbury](#)

Box 790

Didsbury, Alberta

T0M 0W0

Tel: 403-335-3391

Fax: 403-335-9794

E-Mail: [webmaster@didsbury.ca](mailto:webmaster@didsbury.ca)

Dorothy Moore

*Mayor*

[mayor@didsbury.ca](mailto:mayor@didsbury.ca)

Brian L. Irvine

*Chief Administrative Officer*

[birvine@didsbury.ca](mailto:birvine@didsbury.ca)

Chamber of Commerce

Tel: 403-335-3265

### Provincial (Updated May 2006)

Alberta Economic Development

2nd Floor, Provincial Building

4920 - 51 Street

Red Deer, Alberta

T4N 6K8

Tel: 403-340-5300

Fax: 403-340-5231

Andre Tremblay, Regional Manager

[andre.tremblay@gov.ab.ca](mailto:andre.tremblay@gov.ab.ca)

Dawna Allard, Regional Development Officer

[dawna.allard@gov.ab.ca](mailto:dawna.allard@gov.ab.ca)

Lisa Houle, Regional Project Officer

[lisa.houle@gov.ab.ca](mailto:lisa.houle@gov.ab.ca)

Richard Marz

*Member of the Legislative Assembly [MLA]*

Olds-Didsbury-Three Hills Constituency

Constituency Office

P.O. Box 3807

#3, 4530 - 49 Avenue

Olds, AB

T4H 1P5

Phone: (403) 556-3132

Fax: (403) 556-3120

[oldsdidsbury.threehills@assembly.ab.ca](mailto:oldsdidsbury.threehills@assembly.ab.ca)

Legislature Office

#639 Legislature Annex

9718 - 107 Street

Edmonton, AB

T5K 1E4

Phone: (780) 415-0994

Fax: (780) 415-0951

**Federal (Updated May 2006)**

Myron Thompson

*Member of Parliament [MP]*

Wild Rose Constituency

Parliamentary Address

House of Commons

Ottawa, Ontario

K1A 0A6

Telephone: (613) 996-5152

Fax: (613) 947-4601

E-Mail: [Thompson.M@parl.gc.ca](mailto:Thompson.M@parl.gc.ca)

Constituency Address

213 Main Street, Bay 3, P.O. Box 3816

Airdrie, Alberta

T4B 2B9

Telephone: (403) 948-5103

Fax: (403) 948-0879

TTY:

E-Mail: [ThompM1@parl.gc.ca](mailto:ThompM1@parl.gc.ca)

## Location

The Town of Didsbury is located in Mountain View County. It is just west of Highway #2 some 72 km north of Calgary and 72 km south of Red Deer.

Location is the key word when describing Didsbury. Its central location in the David Thompson Tourist Zone provides the visitor with easy access to a host of exciting outdoor activities - fishing, hiking and excellent photo opportunities. Some of Alberta's most beautiful areas are a short one hour drive away in the Rocky Mountain Foothills. The area's wildlife, rivers and campground facilities provide a complete range of sights and experiences to satisfy all tastes. Just west of Highway 2, 45 minutes from Calgary [south], and Red Deer [north], with many interesting things to do and see in all directions, Didsbury is the ideal location from which to base an Alberta holiday.

## Post Secondary Education

Olds College, one of Canada's top agricultural institutes, is a ten minute commute from Didsbury.

Calgary's post- secondary education facilities[ University of Calgary, Southern Alberta Institute of Technology and Mount Royal College] are within easy commuting distance.

## Taxation

---

	<u>Residential/Farmland</u>	<u>Non-Residential</u>
<b>2005</b>		
Municipal Tax Rate	10.0000	13.0000
Education - Alberta School Foundation Fund Tax Rate	4.2950	6.3000
Seniors Lodge Accommodation Tax Rate	.1422	.1422

---

Mill Rates (2001)

Residential - 14.617

Non-Residential - 22.253

## Transportation

### Air Service

The local airport has all weather facilities and is located 6 km north of the Town.. Its runway is 899.40 metres long and it can accommodate many different sized aircraft.

The Calgary Airport is less then 40 minutes away.

### Rail Service

Canadian Pacific provides rail service. Spur trackage is developed on industrial land in Didsbury. If additional spur trackage is required, Didsbury has suitable sites in its boundaries.

### Highways

Didsbury is located on Highway 582, a few kilometres west of Highway #2.

### Bus Services

Greyhound Lines of Canada provides regular service. The Lions Handi-Bus provides a taxi service within the town for the elderly and the handicapped. A community bus is available for rental by community groups.

### **Couriers and Taxis**

Loomis, Purolator, United Parcel Service, Professional Services, Bluebird provide a courier service.

## **Utilities**

### **Electrical Power**

Epcor  
Tel: 310-4300

### **Natural Gas**

Atco Gas  
2014 17 Ave.  
Didsbury, Alberta  
Tel: 403-335-3372

### **Telephone**

Telus  
Tel: 1-888-223-0300

### **Water Supply**

The source of water is the Red Deer River. The town has a reservoir capacity for treated water of 2,273 cubic metres [80,270.00 cubic feet] and a design capacity of 1,900 cubic metres [67,098.50 cubic feet]. The cost is \$0.90 for the first 1,500 gallons and \$0.0062 for every gallon after that. Didsbury's Water Tower holds 600,000 gallons.

### **Waste Management**

Didsbury has 4 short and 3 long treatment lagoons. The sewer treatment usage rate is \$19.00 per month.

Garbage pick-up costs are as follows: Residential - \$7.90/month.

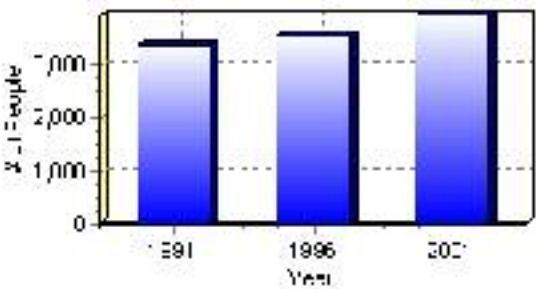
# Population

## Total Population

Population 2004*	3,932
Population 2003*	3,932
Population 2002*	3,932
Population 2001**	3,930
Population 2000*	3,782
Population 1996**	3,553
Population 1991**	3,355
Population % change 1991-1996	5.57%
Population % change 1996-2001	9.64%

\* Source: Official Population List, Alberta Municipal Affairs  
\*\* Source: Statistics Canada 1991, 1996, & 2001 Census

## Total Population 1991-2001

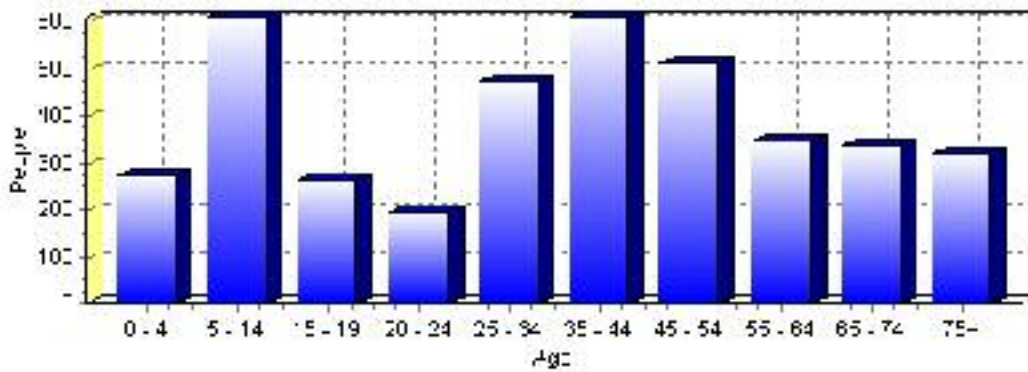




Population by Age and Gender	1996 Male	1996 Female	1996 Total	2001 Male	2001 Female	2001 Total
Age 0 - 4	125	135	260	145	130	275
Age 5 - 14	285	290	575	305	305	610
Age 15 - 19	135	135	270	130	135	265
Age 20 - 24	105	115	220	105	90	195
Age 25 - 34	210	210	420	230	245	475
Age 35 - 44	265	285	550	285	325	610
Age 45 - 54	185	195	380	265	245	510
Age 55 - 64	135	145	280	165	180	345
Age 65 - 74	155	175	330	160	175	335
Age 75 and older	105	160	265	125	195	320
Total All Persons	1,705	1,845	3,550	1,910	2,025	3,935

Source: Statistics Canada 1996 & 2001 Census (numbers may not add up due to rounding)

### Didsbury Population by Age Group (2001)

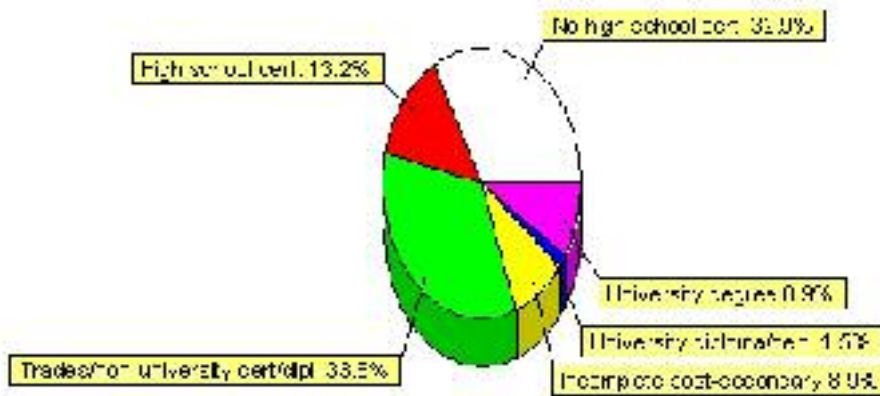


# Education Statistics

Highest level of schooling for Population 20yrs and older	2001	%
People without high school certificates	885	32.90%
People with high school certificates	355	13.20%
People with trades or non-university certificate or diploma	910	33.83%
People with post-secondary education (not completed)	240	8.92%
People with university diploma/certificate	40	1.49%
People with university degree	240	8.92%
Total Population 20 years and older	2,690	100.00%

Source: Statistics Canada 2001 Census (numbers may not add up due to rounding)

## Didsbury Highest Level of Schooling 2001



Population with Post Secondary Qualifications	1996	%	2001	%
Agriculture and biological sciences	60	6.06%	90	7.47%
Commerce, management and business administration	160	16.16%	145	12.03%
Educational, recreational and counseling services	125	12.63%	145	12.03%
Engineering and applied science tech. and trades	275	27.78%	395	32.78%
Engineering and applied sciences	15	1.52%	25	2.07%
Fine and applied arts	50	5.05%	105	8.71%
Health professionals, science and technologies	145	14.65%	165	13.69%
Humanities and related fields	75	7.58%	65	5.39%
Mathematics and physical sciences	25	2.53%	15	1.24%
Social sciences and related fields	60	6.06%	55	4.56%
Other and/or no specialization	0	0.00%	0	0.00%
Total people with post secondary qualifications	990	100.00%	1,205	100.00%
Females with post-secondary qualifications	455	45.96%	580	48.13%
Males with post-secondary qualifications	535	54.04%	625	51.87%

Source: Statistics Canada 1996 & 2001 Census (numbers may not add up due to rounding)

## Labour Force

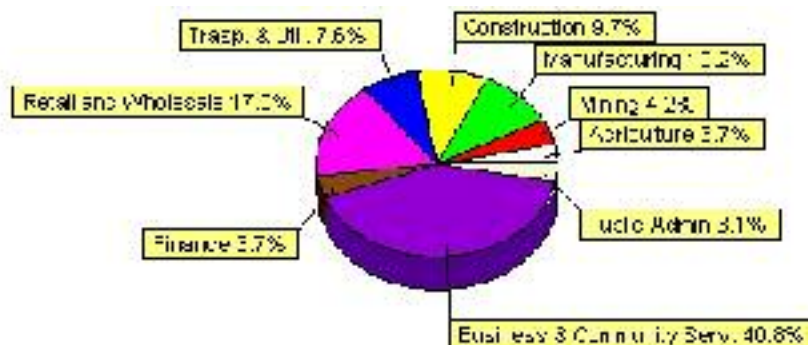
Labour force by activity	1996	2001
In the labour force, both sexes	1,665	1,940
Not in the labour force, both sexes	980	1,015
Total population 15 and over	2,645	2,955
Employed, both sexes	1,510	1,810
Unemployed, both sexes	150	135
Participation rate, both sexes	63.00%	66.00%
Unemployment rate, both sexes	9.00%	7.00%

Source: Statistics Canada 1996 & 2001 Census (numbers may not add up due to rounding)

Labour Force by Industry Division	1996	% of total	2001	% of total
Agriculture	90	5.56%	70	3.66%
Mining	80	4.94%	80	4.19%
Manufacturing	180	11.11%	195	10.21%
Construction	105	6.48%	185	9.69%
Transportation. & Utilities	150	9.26%	145	7.59%
Retail and Wholesale	300	18.52%	325	17.02%
Finance	55	3.40%	70	3.66%
Business & Community Services	570	35.19%	780	40.84%
Public Administration	110	6.79%	60	3.14%
Total All Industries	1,620	100.00%	1,910	100.00%

Source: Statistics Canada 1996 & 2001 Census (numbers may not add up due to rounding)

### Didsbury Labour Force By Industry - 2001



Labour Force by Major Occupational Groups	1996	%	2001	%
Management occupations	95	5.86%	210	10.99%
Business, Finances and administrative occupations	215	13.27%	205	10.73%
Natural and applied sciences and related occupations	55	3.40%	80	4.19%
Health occupations	110	6.79%	70	3.66%
Occupations in social science; education; government and religion	75	4.63%	150	7.85%
Occupations in art; culture; recreation and sport	25	1.54%	50	2.62%

Sales and service occupations	450	27.78%	515	26.96%
Trades; transport; equipment operators and related occupations	300	18.52%	395	20.68%
Occupations unique to primary industry	110	6.79%	100	5.24%
Occupations unique to processing; manufacturing and utilities	175	10.80%	150	7.85%
Occupations not elsewhere classified	40	2.47%	30	1.57%
Total - All Occupations (major groups)	1,620	100.00%	1,910	100.00%
Females - All Occupations	710	43.83%	850	44.50%
Males - All Occupations	910	56.17%	1,065	55.76%

Source: Statistics Canada 1996 & 2001 Census (numbers may not add up due to rounding)

---

## Income

<b>Family Income (Number of Families)</b>	<b>1996</b>	<b>%</b>	<b>2001</b>	<b>%</b>
less than \$19,999	75	8.72%	65	6.84%
\$20,000 - \$39,999	300	34.88%	325	34.21%
\$40,000 - \$59,999	270	31.40%	290	30.53%
\$60,000 and over	215	25.00%	315	33.16%
Total number of families	860	100.00%	995	104.74%
Average family income	\$46,219		\$59,524	
Median family income	\$44,862		\$52,801	

Source: Statistics Canada 1996 & 2001 Census (numbers may not add up due to rounding)

<b>Household Income (Number of Households)</b>	<b>1996</b>	<b>%</b>	<b>2001</b>	<b>%</b>
less than \$19,999	310	23.66%	230	15.59%
\$20,000 - \$39,999	430	32.82%	430	29.15%
\$40,000 - \$59,999	300	22.90%	335	22.71%
\$60,000 and over	115	8.78%	475	32.20%
Total number of households	1,310	100.00%	1,475	100.00%
Average household income	\$39,200		\$52,597	
Median household income	\$34,485		\$45,248	

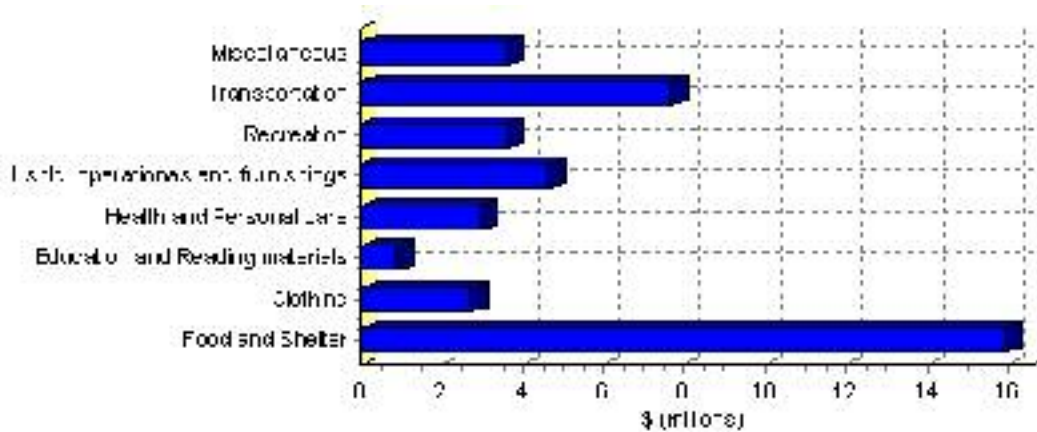
Source: Statistics Canada 1996 & 2001 Census (numbers may not add up due to rounding)

# Family Expenditure

Expenditure Category	1992	% of total	1996	% of total
Food and Shelter	\$13,372,615	37.03%	\$15,951,234	37.88%
Clothing	\$2,503,030	6.93%	\$2,716,718	6.45%
Education and Reading materials	\$786,165	2.18%	\$909,535	2.16%
Health and Personal care	\$2,247,045	6.22%	\$2,974,371	7.06%
Hshld. operations and furnishings	\$3,980,355	11.02%	\$4,645,239	11.03%
Recreation	\$2,995,175	8.29%	\$3,604,943	8.56%
Transportation	\$7,381,905	20.44%	\$7,680,819	18.24%
Miscellaneous	\$2,832,620	7.84%	\$3,627,825	8.61%
Total Current Consumption	\$36,109,910	100.00%	\$42,110,684	100.00%
Total # of Households	1,185		1,310	
Average Consumption per Household	\$30,472		\$32,146	

Source: Statistics Canada Family Expenditure Survey 1992 & 1996 (numbers may not add up due to rounding).

## Didsbury Family Expenditures (1996)

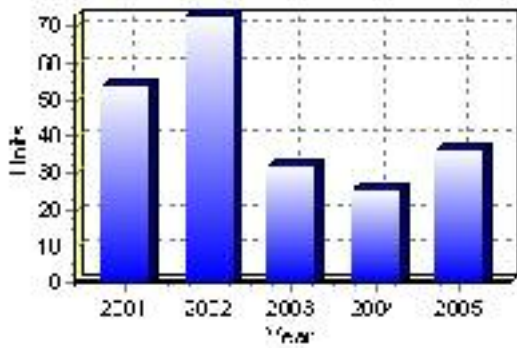


# Building Permits

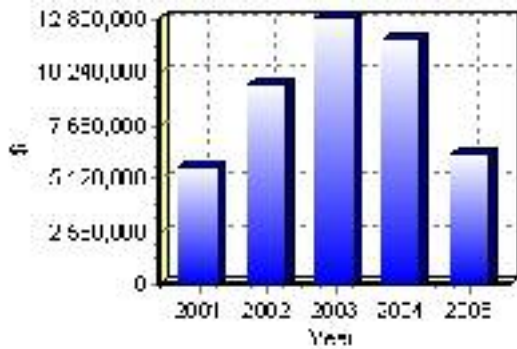
Total Building Permit Values	2001	2002	2003	2004	2005
Building Permits Value, Commercial	\$89,000	\$437,000	\$1,354,000	\$345,000	\$503,000
Building Permits Value, Industrial	\$16,000	\$344,000	\$287,000	\$30,000	\$520,000
Building Permits Value, Institutional	\$85,000	\$837,000	\$6,600,000	\$7,953,000	\$1,000
Building Permits Value, Residential	\$5,543,000	\$8,089,000	\$4,609,000	\$3,429,000	\$5,228,000
Building Permits Value, Total	\$5,733,000	\$9,707,000	\$12,850,000	\$11,757,000	\$6,252,000
Total Housing Starts	54	73	32	25	36

Source: Statistics Canada 2000-2004 Building Permits (numbers may not add up due to rounding)

## Total Housing Starts



## Value of Building Permits



## Dwellings

<b>Occupied Private Dwellings by Type</b>	<b>1996</b>	<b>% of total</b>	<b>2001</b>	<b>% of total</b>
Apartments	35	2.67%	70	4.75%
Detached Duplexes	20	1.53%	5	0.34%
Movable Dwellings	100	7.63%	100	6.78%
Other single attached house	15	1.15%	5	0.34%
Row and semi-detached house	210	16.03%	225	15.25%
Single-detached house	930	70.99%	1,070	72.54%
Total number of occupied private dwellings	1,310	100.00%	1,475	100.00%
Private dwellings, owned	980	74.81%	1,195	81.02%
Private Dwellings, rented	335	25.57%	275	18.64%

Source: Statistics Canada 1996 & 2001 Census (numbers may not add up due to rounding)

<b>Private Dwellings by Period of Construction</b>	<b># of Dwellings</b>	<b>% of total</b>
Period of construction, before 1946	145	9.83%
Period of construction, 1946 - 1960	130	8.81%
Period of construction, 1961 - 1970	195	13.22%
Period of construction, 1971 - 1980	520	35.25%
Period of construction, 1981 - 1990	180	12.20%
Period of construction, 1991 - 2001	305	20.68%
Total number of private dwellings constructed	1,475	100.00%

Source: Statistics Canada 2001 Census (numbers may not add up due to rounding)



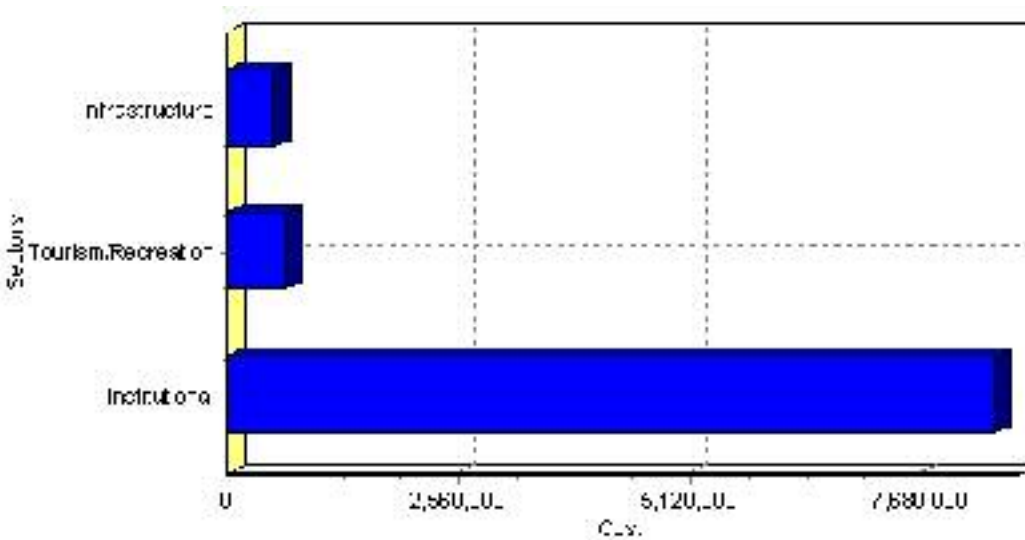
# Projects

## Summary of Projects in Didsbury as of September 2006

Project Sector	Number of Projects	Project Cost
Institutional	1	\$8,500,000
Tourism/Recreation	3	\$649,000
Infrastructure	1	\$500,000
Total	5	\$9,649,000

This inventory lists projects in Alberta that have recently been completed, are under construction, or are proposed to start construction. Not all projects are listed due to reasons of confidentiality and/or due to information not being available at the time of printing. Project data is obtained from public information sources, where possible, this data has been verified with the project proponent/developer, users of the Inventory may wish to confirm project data with the proponent/developer. The inventory does not breakdown project expenditures by any given year. The cost of a project is the value of expenditures expected over all phases of project construction, which may span over two or more years. Cost of projects listed in the Inventory are estimated values only. Source: Alberta Economic Development, 2004.

## Value of Projects by Sector (as of September 2006)



Project Status	Number of Projects	Project Cost
Announced	2	\$186,500
Completed	1	\$8,500,000
Under Construction	2	\$962,500
Total	5	\$9,649,000

This inventory lists projects in Alberta that have recently been completed, are under construction, or are proposed to start construction. Not all projects are listed due to reasons of confidentiality and/or due to information not being available at the time of printing. Project data is obtained from public information sources, where possible, this data has been verified with the project proponent/developer, users of the Inventory may wish to confirm project data with the proponent/developer. The inventory does not breakdown project expenditures by any given year. The cost of a project is the value of expenditures expected over all phases of project construction, which may span over two or more years. Cost of projects listed in the Inventory are estimated values only. Source: Alberta Economic Development, 2004.

## Largest Projects in Didsbury as of September 2006

Company Name	Project Description	Project Location	Project Cost	Construction Schedule	Status
Alberta Infrastructure and Transportation*	Replacement High School	Didsbury	\$8,500,000	2005-2006	Completed
Mountain View Regional Waste Commission	Landfill Expansion	Didsbury	\$500,000	2006-2006	Under Construction
Town of Didsbury	Centennial Trail System	Didsbury	\$462,500	2006-2006	Under Construction
Town of Didsbury	Recreation Facility Energy Management Project	Didsbury	\$106,500	2006-2006	Announced
Town Of Didsbury	Memorial Complex Arena - Upgrades	Didsbury	\$80,000	2006-2006	Announced

Disclaimer: Information in this profile has been provided from a variety of external sources. Although every effort has been made to ensure the accuracy, currency and reliability of the content and data, AlbertaFirst.com Ltd. accepts no responsibility in this regard.

© AlbertaFirst.com Ltd., 2006.