

# Vauxhall

## Welcome

# Welcome to Vauxhall!!

## Key Contacts for Business Development

### Mayor

Lois Maloney

### MLA

Honourable Barry McFarland (PC)  
MLA for Little Bow

Constituency Office  
P.O. Box 231  
111 Carman Street  
Carmangay, AB  
T0L 0N0  
Phone: (403) 643-2077  
Toll Free: 1-800-563-0917  
Fax: (403) 643-2024  
little.bow@assembly.ab.ca

Legislature Office  
#410 Legislature Building  
10800 - 97 Avenue  
Edmonton, AB  
T5K 2B6  
Phone: (780) 427-0879  
Fax: (780) 422-0351

### MP

Medicine Hat, Alberta  
SOLBERG, Monte (Conservative)

Parliamentary Address  
House of Commons  
Ottawa, Ontario  
K1A 0A6  
Telephone: (613) 992-4516  
Fax: (613) 992-6181  
E-Mail: Solberg.M@parl.gc.ca

Constituency Address

24-419 3rd Street South East  
Medicine Hat, Alberta  
T1A 0G9  
Telephone: (403) 528-4698  
Fax: (403) 528-4365  
TTY:  
E-Mail:  
6-403 2nd Avenue West, P.O. Box 640  
Brooks, Alberta  
T1R 1B6  
Telephone: (403) 362-7677 1-800-565-4694  
Fax: (403) 362-7055

## Taxation

---

	<u>Residential/Farmland</u>	<u>Non-Residential</u>
<b>2005</b>		
Municipal Tax Rate	4.8329	12.8160
Education - Alberta School Foundation Fund Tax Rate	4.7396	7.8226
Seniors Lodge Accommodation Tax Rate	.1067	.1067

---

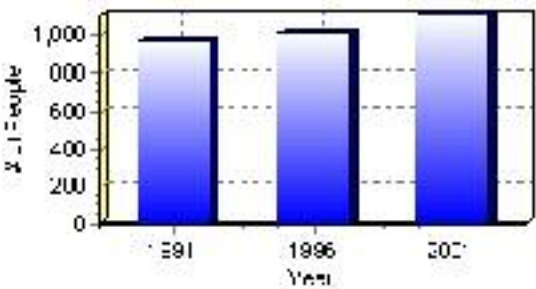
# Population

## Total Population

Population 2004*	1,112
Population 2003*	1,112
Population 2002*	1,112
Population 2001**	1,115
Population 2000*	1,011
Population 1996**	1,011
Population 1991**	977
Population % change 1991-1996	3.36%
Population % change 1996-2001	9.08%

\* Source: Official Population List, Alberta Municipal Affairs  
\*\* Source: Statistics Canada 1991, 1996, & 2001 Census

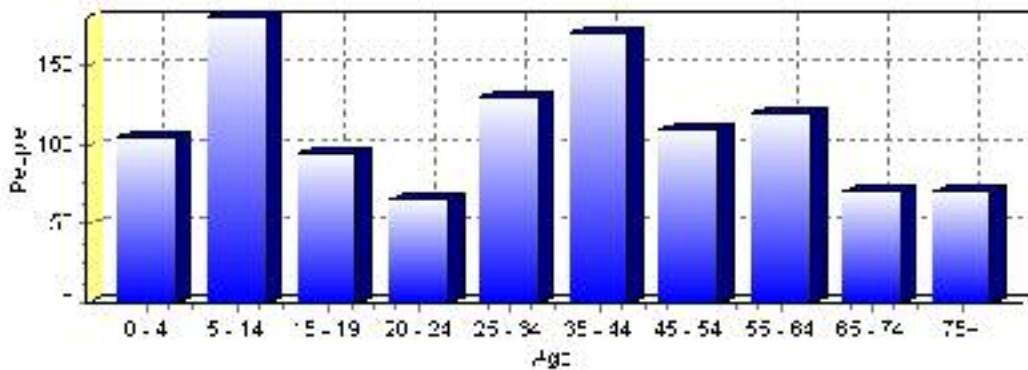
## Total Population 1991-2001



Population by Age and Gender	1996 Male	1996 Female	1996 Total	2001 Male	2001 Female	2001 Total
Age 0 - 4	35	30	65	60	45	105
Age 5 - 14	80	90	170	90	90	180
Age 15 - 19	20	40	60	45	50	95
Age 20 - 24	40	35	75	40	25	65
Age 25 - 34	50	60	110	70	60	130
Age 35 - 44	95	70	165	90	80	170
Age 45 - 54	60	50	110	60	50	110
Age 55 - 64	40	45	85	60	60	120
Age 65 - 74	40	45	85	35	35	70
Age 75 and older	35	45	80	30	40	70
Total All Persons	505	510	1,015	580	535	1,115

Source: Statistics Canada 1996 & 2001 Census (numbers may not add up due to rounding)

### Vauxhall Population by Age Group (2001)

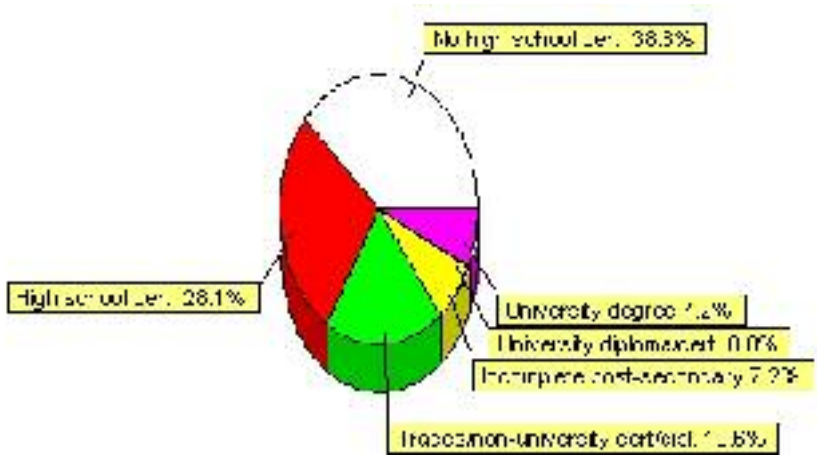


# Education Statistics

Highest level of schooling for Population 20yrs and older	2001	%
People without high school certificates	295	38.56%
People with high school certificates	215	28.10%
People with trades or non-university certificate or diploma	150	19.61%
People with post-secondary education (not completed)	55	7.19%
People with university diploma/certificate	0	0.00%
People with university degree	55	7.19%
Total Population 20 years and older	765	100.00%

Source: Statistics Canada 2001 Census (numbers may not add up due to rounding)

## Vauxhall Highest Level of Schooling 2001



Population with Post Secondary Qualifications	1996	%	2001	%
Agriculture and biological sciences	0	0.00%	25	12.20%
Commerce, management and business administration	15	10.34%	45	21.95%
Educational, recreational and counseling services	20	13.79%	35	17.07%
Engineering and applied science tech. and trades	65	44.83%	55	26.83%
Engineering and applied sciences	0	0.00%	0	0.00%
Fine and applied arts	20	13.79%	10	4.88%
Health professionals, science and technologies	15	10.34%	15	7.32%
Humanities and related fields	0	0.00%	10	4.88%
Mathematics and physical sciences	0	0.00%	0	0.00%
Social sciences and related fields	10	6.90%	10	4.88%
Other and/or no specialization	0	0.00%	0	0.00%
Total people with post secondary qualifications	145	100.00%	205	100.00%
Females with post-secondary qualifications	70	48.28%	90	43.90%
Males with post-secondary qualifications	75	51.72%	115	56.10%

Source: Statistics Canada 1996 & 2001 Census (numbers may not add up due to rounding)

## Labour Force

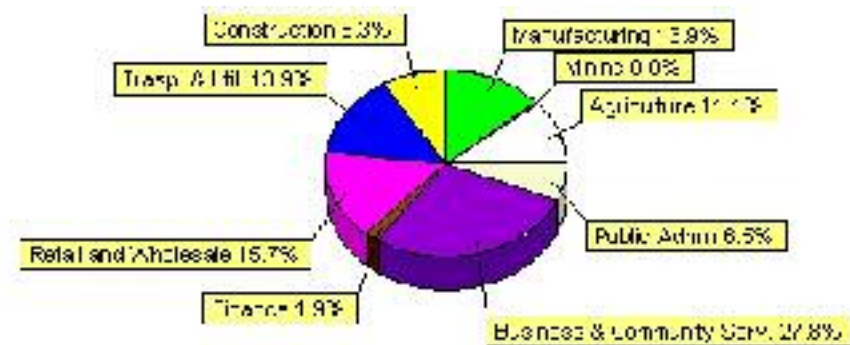
Labour force by activity	1996	2001
In the labour force, both sexes	450	545
Not in the labour force, both sexes	325	310
Total population 15 and over	770	860
Employed, both sexes	430	525
Unemployed, both sexes	15	25
Participation rate, both sexes	58.00%	63.00%
Unemployment rate, both sexes	3.00%	5.00%

Source: Statistics Canada 1996 & 2001 Census (numbers may not add up due to rounding)

Labour Force by Industry Division	1996	% of total	2001	% of total
Agriculture	110	24.44%	60	11.11%
Mining	45	10.00%	0	0.00%
Manufacturing	45	10.00%	75	13.89%
Construction	45	10.00%	45	8.33%
Transportation. & Utilities	35	7.78%	75	13.89%
Retail and Wholesale	60	13.33%	85	15.74%
Finance	10	2.22%	10	1.85%
Business & Community Services	65	14.44%	150	27.78%
Public Administration	20	4.44%	35	6.48%
Total All Industries	450	100.00%	540	100.00%

Source: Statistics Canada 1996 & 2001 Census (numbers may not add up due to rounding)

### Vauxhall Labour Force By Industry - 2001



Labour Force by Major Occupational Groups	1996	%	2001	%
Management occupations	20	4.44%	50	9.35%
Business, Finances and administrative occupations	40	8.89%	50	9.35%
Natural and applied sciences and related occupations	30	6.67%	15	2.80%
Health occupations	0	0.00%	10	1.87%
Occupations in social science; education; government and religion	15	3.33%	25	4.67%
Occupations in art; culture; recreation and sport	10	2.22%	10	1.87%

Sales and service occupations	60	13.33%	125	23.36%
Trades; transport; equipment operators and related occupations	100	22.22%	125	23.36%
Occupations unique to primary industry	110	24.44%	75	14.02%
Occupations unique to processing; manufacturing and utilities	75	16.67%	60	11.21%
Occupations not elsewhere classified	0	0.00%	10	1.87%
Total - All Occupations (major groups)	450	100.00%	535	100.00%
Females - All Occupations	175	38.89%	210	39.25%
Males - All Occupations	275	61.11%	325	60.75%

Source: Statistics Canada 1996 & 2001 Census (numbers may not add up due to rounding)

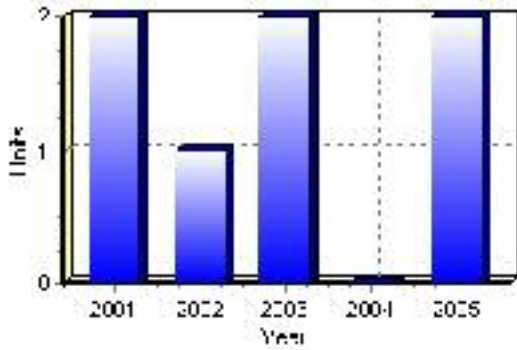
---

# Building Permits

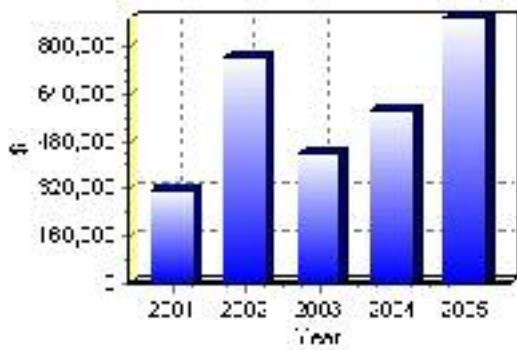
Total Building Permit Values	2001	2002	2003	2004	2005
Building Permits Value, Commercial	\$0	\$50,000	\$60,000	\$389,000	\$0
Building Permits Value, Industrial	\$35,000	\$50,000	\$0	\$0	\$0
Building Permits Value, Institutional	\$40,000	\$0	\$0	\$20,000	\$400,000
Building Permits Value, Residential	\$238,000	\$661,000	\$374,000	\$174,000	\$493,000
Building Permits Value, Total	\$313,000	\$761,000	\$434,000	\$583,000	\$893,000
Total Housing Starts	2	1	2	0	2

Source: Statistics Canada 2000-2004 Building Permits (numbers may not add up due to rounding)

## Total Housing Starts



## Value of Building Permits





## Dwellings

<b>Occupied Private Dwellings by Type</b>	<b>1996</b>	<b>% of total</b>	<b>2001</b>	<b>% of total</b>
Apartments	25	6.25%	25	6.02%
Detached Duplexes	0	0.00%	0	0.00%
Movable Dwellings	45	11.25%	45	10.84%
Other single attached house	10	2.50%	0	0.00%
Row and semi-detached house	10	2.50%	15	3.61%
Single-detached house	310	77.50%	320	77.11%
Total number of occupied private dwellings	400	100.00%	415	100.00%
Private dwellings, owned	320	80.00%	315	75.90%
Private Dwellings, rented	80	20.00%	95	22.89%

Source: Statistics Canada 1996 & 2001 Census (numbers may not add up due to rounding)

<b>Private Dwellings by Period of Construction</b>	<b># of Dwellings</b>	<b>% of total</b>
Period of construction, before 1946	60	14.81%
Period of construction, 1946 - 1960	85	20.99%
Period of construction, 1961 - 1970	85	20.99%
Period of construction, 1971 - 1980	95	23.46%
Period of construction, 1981 - 1990	30	7.41%
Period of construction, 1991 - 2001	50	12.35%
Total number of private dwellings constructed	405	100.00%

Source: Statistics Canada 2001 Census (numbers may not add up due to rounding)

Disclaimer: Information in this profile has been provided from a variety of external sources. Although every effort has been made to ensure the accuracy, currency and reliability of the content and data, AlbertaFirst.com Ltd. accepts no responsibility in this regard.

© AlbertaFirst.com Ltd., 2006.