

Stettler

www.stettler.net

Welcome

On behalf of the Town of **Stettler**, welcome. We invite you to explore and discover all that Stettler has to offer. Stettler is a warm and friendly community located in the "Heart of Alberta".

Stettler is an excellent community that boasts a low crime rate and is a great place to raise a family. Fully serviced residential lots are available at competitive prices and new attractive mature adult housing is available. Stettler has modern up-to-date educational facilities with grades K-12, including business, fine arts and vocational programs; Post-Secondary - The Big Country Educational Consortium in co-operation with Red Deer College. Stettler has a full compliment of health facilities, community social programs and spiritual denominations to suit everyone's needs.

You'll find a full selection of merchants and services of every type available in Stettler. Our area camping facilities are first rate and whether you decide to stay in town or at one of the full service resort areas you'll be well looked after.

So come for a visit or do some business. Once you have been here I'm sure you will agree that Stettler is a great place to be.

Welcome to Stettler!

Jim Hunter
Mayor of Stettler



Area Overview

The Heart of Alberta. So proclaims the sign at the entryway to Stettler. And who's to argue? For as long as the lifeblood of this province remains oil and agriculture, it will pump through nowhere as it does through Stettler.

With a trading area extending from Camrose to Drumheller, and from Alix to Saskatchewan, Stettler is the heart, mind and soul of east central Alberta. Selling, servicing, manufacturing – it's all there, and in abundance. Not to mention learning, playing and feeding the spirit.

The Town of Stettler was named after Carl Stettler, a native of Switzerland, who came to Alberta in 1903. With a number of his fellow countrymen, he established a Swiss community, Blumenau, not far from what is now Stettler. With the arrival of the railroad, Stettler was established and Blumenau relocated there. Status as a town was granted in 1906.

In the early days, Stettler was a farm service and supply centre. To this day the community derives a good part of its economic strength from the agricultural industry.

Forty years ago there was a gold rush in Stettler County. Although the gold that men searched for ran black and thick and stank of sulphur, it produced a gush of economic activity still seen here today. The Fenn/Big Valley field was capable of producing 974 barrels of oil a day with virtually no water. Later, this field would produce 35,000 barrels a day for Gulf and account for 26% of the company's total production of light oil. This would soon draw other companies like Esso and Shell.

When the oil started flowing in Stettler, oil batteries and pipelines became a familiar fixture on the Stettler landscape. With the recent oil & gas expansions in the area, these facilities have been rapidly expanding.



Community Services

Municipal

Town of Stettler
P.O. Box 280
Stettler, Alberta
T0C 2L0
Tel: 403-742-8305
Fax: 403-742-1404

Municipal Library
Recreation – Parks & Leisure Services
Family and Social Services

Health Region

Stettler Hospital Complex
Community Health Authority #4

Provincial

Agriculture
Alberta Human Resources & Employment
Mental Health
Provincial Court
Transportation and Utilities

Federal

Canada Post
Canada Employment Centre – Human Resources Development Canada
Royal Canadian Mounted Police

Community Lifestyle

Recreation

The Recreation Centre houses 2 arenas, the Municipal Library and several meeting rooms and a social centre. In addition, Stettler has a Performing Arts Theatre, indoor pool and a host of other facilities. New Liesure Centre opening 2006, complete swimming pool, waterslide, childrens pool, whirl pool and fitness centre.

The Stettler Elks Golf and Country Club is a 9-hole course, with grass greens located in Stettler. The Pheasantback Golf Course located 6 km north, has 18 holes in a natural setting with rolling hills, bush, water and grass greens.

Nearby parks include Rochon Sands Provincial Park, Boss Hill Provincial Park, The Narrows, Pelican Point and Ol' McDonald's Campground [all on Buffalo Lake], Content Bridge, River Creek RV Park [both on the Red Deer River] and Big Knife Provincial Park [on the Battle River]. All of these areas provide camping facilities.

Community Organizations

Stettler has over 100 community and service organizations, youth, adult and seniors clubs, as well as sports programs.

The Stettler & District Family and Community Support Services is a municipal-provincial partnership through which local people can develop services and perform activities to strengthen the family and community. This organization is involved in over 20 projects and associate projects that benefit the community. As well, they are contracted to operate the Federal and Provincial Employment Centre.

Other community organizations include:

1. Heartland Youth Centre – Big Brother/Big Sister and Boys & Girls Club
2. Handibus – transportation for the handicapped and senior citizens.
3. Home Support – meals on wheels, friendly visiting services and home support aids.
4. Stettler & District Food Bank.

Religious Services

Seventeen denominations are available in Stettler.

Special Annual Events/Attractions

The Stettler Town and Country Museum is the 5th largest museum in the Province. It has a fine selection of historical artifacts and buildings which give a fairly accurate representation of Stettler's history. Buildings on the site include the Whetsel and Ransom Schools, Lakeview Church, Nevis Store, Estonian House, the Court House and the CNR Station.

Alberta Prairie Railway excursions provide a nostalgic ride on a steam-powered train through rolling parkland and picturesque farms as well as offering a glimpse of the past in the unique museums and communities in east-central Alberta.

Contact the Stettler Business and Tourism Centre for up-to-date information at (403) 742-3181.

Annual Events:

- Stettler Music Festival - March/April
- Stettler Chamber of Commerce Trade Show – April
- 4-H Show & Sale – May
- Stettler Show & Shine/Crazy Days – June
- Canada Day Celebrations – July
- Stettler Flying Club and Fly-In Breakfast – September (Labor Day)

Hospitality

Accommodation

- Stettler Hotel
- Super 8 Motel
- Best Western Motel
- Heartland Lodge
- Plains Motor Inn
- Royal Hotel
- Stettler Motel
- Ramada Inn (opening 2006)

Restaurants

- A & W Restaurant
- Club Cafe
- Colleen's Cafe
- Cottage Restaurant
- Dairy Queen
- Hong Kong Restaurant
- Kent's Cafe
- Kentucky Fried Chicken
- Kowloon Bar & Grill
- Little House of Coffee
- Red Onion Pizza
- RMD Pizza & Lounge
- Royal Canadian Legion
- Salt & Pepper Lunch Stop
- Sandwich Patch
- Smitty's Family Restaurant
- Subway Sandwiches and Salads
- Sylvester's Bar & Grill/Pizza Hut
- Town Pump Restaurant
- White Goose Restaurant

Economic Base

Two primary industries dominate in the Stettler region -- agriculture [ranching and grain farming] and oil & gas. Agriculture is the mainstay, which employs most of the rural population and supports a healthy agricultural service sector within the Town of Stettler.

Agriculture is the greatest contributor to Stettler's economic stability and offers many opportunities. Stettler farmers produce such diverse items as dairy products, straw, hay, barely, canola, oats, honey, poultry, cattle, hogs and rye. As the town is in the heart of a very productive agricultural industry, there is not only great potential to provide numerous services to area farmers, but also to become involved in food-processing.

The oil & gas industry supports a large segment of the population from the Town and County. It also supports a large oil well servicing sector within the Town of Stettler. Morrison, Enerflex, Tornado, as well as many other oilfield players are in Stettler. In addition, some 50 plus local firms provide services to the oil and gas fields, pipelines, gas processing plants, and field facilities.

Tourism has become a big part of Stettler's economy with the advent of Alberta Prairie Steam Tours. Alberta Prairie offers an exciting one-day adventure on board a real steam or diesel powered train. There are about four trips a week in the summer with different entertainment and excursion packages offered such as a teddy bear, special, murder mystery or Oktoberfest. In the winter there are a limited number of fine dining excursions. Now in its 13th year of operation Alberta Prairie will carry over 21,000 passengers a season.

In addition, Stettler attracts sportsmen from all over with the abundance of hunting and fishing in the surrounding area. Excellent camping facilities are located throughout the region.

Also within the Town of Stettler, a significant level of employment is concentrated in government services and trade industries.

Economic Facts

Traditional business ties developed by the agricultural and oil & gas industries, coupled with Stettler's location, have facilitated the introduction of new service industries into the area. Stettler is by no means limited to these industries alone, due in part by the Town's aggressive business community. Recent gains have been made in manufacturing with the establishment of Enerflex and Tornado Oilfield Services.

There are 446 registered businesses in the Town and County of Stettler, excluding those located in Villages and Hamlets.

Major Businesses Products/Services

- Western Canada Lottery Corporation
- Bill's Farm Supplies [1976] Ltd. Farm Implements
- Gulf Canada Resources Ltd. Oil & Gas
- Homestead Equipment
- Kennedy Oilfield Services Ltd.. Oil & Gas Servicing
- Wilfort Construction Road Construction
- Stettler Auction Mart Auction Services
- Marshall Construction Oilfield Construction
- Franklin Supply Co. Oilfield Services
- Tornado Technologies Inc.
- Extra Foods Grocery Store
- Parcels Trucking Ltd.
- AgroTec Farm Equipment
- Stettler (IGA) Garden Market
- Enerflex
- I.D. Apparels
- CCS Energy Services
- Canadian Enviro-Tub Inc.
- Centalta Industries
- Heartland Industries
- Koch Pipelines LP
- Top Notch Oilfield
- Checkmate Oilfield Services
- Stettler Independent
- Shelter King Steel Buildings
- Deans Machine Inc.
- Doug's Tank Truck Service
- WalMart
- Peavey Mart
- Home Hardware

Financial Institutions

- Alberta Treasury Branch
- Bank of Nova Scotia
- Battle River Credit Union
- Canadian Imperial Bank of Commerce

- Farm Credit Corporation
- Royal Bank of Canada
- TD Canada Trust

Education

Stettler is part of the Clearview School Division #71, headquartered in Stettler [Tel: 403-742-3331].

Daycare/Nursery

- Stettler Child Care Centre
- Sharebear Playschool Society

Public

Public schools in Stettler include Stettler Elementary School [K-5], Stettler Middle School [6-8], and William E. Hay Composite High School [9-12]. Programs in business and fine arts are offered, along with vocational programs.

Separate

East Central Alberta Catholic Separate Schools Regional Division #16.

Private

N/A

Emergency Services

Fire Protection

Stettler is served by the Stettler Town and County Fire Department, which has 30 volunteers, a rescue van and three fire trucks.

Police Services

The Stettler detachment of the Royal Canadian Mounted Police [RCMP] has an overall strength of 12, comprised of 1 Sergeant, 1 Corporal, 6 constables on Town detail, 2 Highway Patrol persons and 2 Technical and Support personnel [Tel: 403-742-3381].

A Community Resource Officer, who is an RCMP constable, works out of the Wm. E. Hay Composite High School. This constable is a reference and liaison as well as teaching the Drug Abuse Resistance Education Program for students in the Clearview School Division. The Community Resource Officer is a joint project of the Town, County and Clearview School Division.

Ambulance Services

The Stettler and District Ambulance Association offers 24 hour Basic Life Support to the Town and County of Stettler. The Association has 3 fully equipped ambulances and is located in a brand new Ambulance Station. [Tel: 403-742-1900].

Health Care

The Stettler Hospital Complex is a fully accredited 150 bed multilevel facility. The hospital offers 24 hour emergency service with 2 of the 6 physicians on call for emergency treatment. The 50 acute medical care beds offer pediatric, medical, surgical, obstetrical and ambulance care. Renal Dialysis Unit with 6 stations.

The Auxiliary Hospital and Nursing Home, with a total of 100 long term care beds, provides nursing care, rehabilitation, nutrition and

pharmaceutical services to the residents. Day support and respite care is available for community referrals. The fully staffed Radiology, Laboratory, Physiotherapy, Occupational Therapy and Recreation Therapy Departments boast the latest in available training and equipment.

Community Health Authority #4 includes programs such as community health nursing, coordinated home care, Alberta Aids to Daily Living, environmental health, dental health, speech pathology, and Alberta hereditary diseases.

Stettler also has an Alberta Alcohol and Drug Abuse Commission office and Alberta Mental Health Clinic.

Senior Housing

The County of Stettler Housing Authority operates Willow Creek and Heart Haven seniors' lodges in Stettler. Also, Paragon Place combines senior lodge facilities and senior self-contained units. [Tel: 403-742-2953].

Key Contacts for Business Development

Municipal (Updated May 2006)

Town of Stettler
P.O. Box 280
Stettler, Alberta
T0C 2L0
Tel: 403-742-8305
Fax: 403-742-1404
Email: townoffice@stettler.net
James Hunter
Mayor

Robert Stoutenberg
Town Manager
Tel: 403-742-8305
Fax: 403-742-1404
Email: robs@stettler.net

Alan Willis - EDO
Stettler Regional Board of Trade and Community Development
Box 58
Stettler, Alberta
T0C 2L0
Tel: 403-742-3181
Fax: 403-742-3123
Toll Free: 1-877-742-9499
E-Mail: arwillis@telus.net

Provincial (Updated May 2006)

Alberta Economic Development
2nd Floor, Provincial Building
4920 - 51 Street
Red Deer, Alberta
T4N 6K8
Tel: 403-340-5300
Fax: 403-340-5231
Dawna Allard, Acting Regional Manager
dawna.allard@gov.ab.ca

Lisa Houle, Regional Project Officer
lisa.houle@gov.ab.ca

Hon. Shirley McClellan
Member of the Legislative Assembly [MLA]
Lacombe-Stettler Constituency

Constituency Office
Box 1386
119 - 2nd Avenue West
Hanna
T0J 1P0
Phone: (403) 854-4333
Fax: (403) 854-2812
drumheller.stettler@assembly.ab.ca

Legislature Office
#224 Legislature Building
10800 - 97 Avenue
Edmonton
T5K 2B6
Phone: (780) 427-8809
Fax: (780) 428-1341

Federal (Updated June 2001)

Kevin Sorenson
Member of Parliament [MP]
Crowfoot Constituency

Parliamentary Address
House of Commons
Ottawa, Ontario
K1A 0A6
Telephone: (613) 947-4608
Fax: (613) 947-4611
E-Mail: Sorenson.K@parl.gc.ca

Constituency Address
4945 - 50th Street
Camrose, Alberta
T4V 1P9
Telephone: (780) 608-4600 1-800-665-4358
Fax: (780) 608-4603

Location

The Town of Stettler is located in the County of Stettler #6, in east-central Alberta at the junction of Highway 56 [north-south] and Highway 12 [east-west]. It is 179 km southeast of Edmonton, 230 km northeast of Calgary and 101 km east of Red Deer.

Post Secondary Education

The Big Country Educational Consortium, in co-operation with Red Deer College, has offered post secondary education in Stettler since 1982.

The College offers a wide variety of courses.

For more information please contact:

Susan Rosin, Manager

Phone: 403-742-6700

Fax: 403-3285

Email: BCEC@Heartland.AB.CA

Stettler & District Community Adult Learning Council offers winter and spring courses in business, computer, recreation, fine arts, general interest/hobbies.

For more information please contact:

Orest Holubetz – Program Coordinator

Phone: 403-742-2280

Fax: 403-742-8860

Email: oresthol@telus.net

Taxation

	<u>Residential/Farmland</u>	<u>Non-Residential</u>
2005		
Municipal Tax Rate	8.5620	8.5620
Education - Alberta School Foundation Fund Tax Rate	4.7470	6.2880
Seniors Lodge Accommodation Tax Rate	.3670	.3670

Mill Rates (2004)

Residential-Public 14.776

Residential-Separate 14.776

Non-Residential-Public 16.918

Non-Residential-Separate 16.918

A typical 1976 1,080 square foot bungalow house with a 1 ½ unattached car garage is assessed at \$127,160 in 2005. The total 2005 residential taxes for this bungalow would be \$1,797.

Transportation

Air Service

The Stettler Airstrip is located south-west of Stettler. Any light aircraft, single or twin engine, with a gross weight of 13,000 lbs. can use the airstrip. Other airstrips in the area include Red Deer Industrial Airport, Calgary International Airport and Edmonton International Airport.

Rail Service

Rail service is provided in Stettler by Central Western Railway Corporation. Highways Connecting highways are Highway 56 to Drumheller [south] and Camrose [north], Highway 12 to Saskatchewan [east] and Lacombe [west]. Also Highway 11 goes to Red Deer.

Trucking Firms

Stettler is serviced by a number of inter-provincial and regional trucking operations including Hi-Way 9 Express Ltd., and Cage Logistics Inc. In addition, there are a number of private individuals who provide local trucking services.

Bus Services

Passenger bus and freight service is provided by Ferguson Bus which provides bus service to and from Stettler and all major centers.

Couriers and Taxis

Courier services are available daily from both Purolator and Loomis. As well, Priority Post services are available through Canada Post.

Stettler is serviced by Central Alberta Taxi Service.

Utilities

Electrical Power

Atco Electric

Customer Service 1-800-668-2248

Emergency 1-800-668-5506

Natural Gas

Alta Gas Utilities Ltd.

Customer Service 1-866-222-2067

Emergency 1-866-222-2068

Shaw Cable

Customer Service 1-888-467-6990

Telus Communication

Customer Service 310-2255

Water Supply

The Town's raw water supply is pumped from the Red Deer River to the Water Treatment Plant that is approximately 18 kilometers from Town. The Water Treatment Plant was built in 1984 at a cost of over \$10 million. It is able to produce 5,500 cubic meters (over 1.2 million gallons) per day of drinking water that meets or exceeds all of the health and quality standards that are currently in place.

In 2001, Associated Engineering was commissioned by the Town to prepare a five- year Water Treatment Plant Capital Improvements Plan to increase the water treatment processing capacity. The cost for this five-year plan is in excess of \$1.5 million and when completed will ensure that necessary capacity and quality of drinking water will be available for many years.

As of May 1, 2005 the water utility charge is a flat rate of \$11.00 per month plus an amount based on the consumption of water in a building.

Waste Water Management

In 1997, the Town of Stettler constructed an innovative Wetlands Treatment System to compliment the traditional lagoon system for

the treatment of municipal wastewater. This system will service a population to a maximum of 6,410.

Sewer service charge for residential users is \$14.00 while the charge for commercial users is 40% of the water charge or \$14.00 whichever is greater.

Waste Management

The Town of Stettler and local service clubs have a number of waste management initiatives. This includes a spring clean-up, composting program, household toxic roundup and the recycling of newsprint, flyers and bulk paper.

The Stettler Waste Management Authority operates a regional sanitary landfill and throughout the County there are a number of Transfer Stations. Each are open to the public and accept different types of sanitary landfill items.

The Town has a weekly residential garbage pick-up service. The residential garbage charge of \$10.00 per month includes pick-up and operational charges for the Waste Management Authority. In addition, a private contractor has a garbage bin service for the commercial/industrial sector.

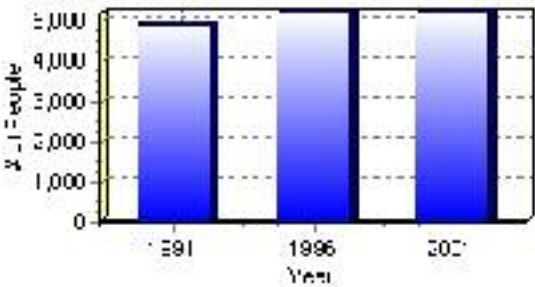
Population

Total Population

Population 2004*	5,226
Population 2003*	5,226
Population 2002*	5,226
Population 2001**	5,215
Population 2000*	5,220
Population 1996**	5,220
Population 1991**	4,947
Population % change 1991-1996	5.23%
Population % change 1996-2001	0.11%

* Source: Official Population List, Alberta Municipal Affairs
** Source: Statistics Canada 1991, 1996, & 2001 Census

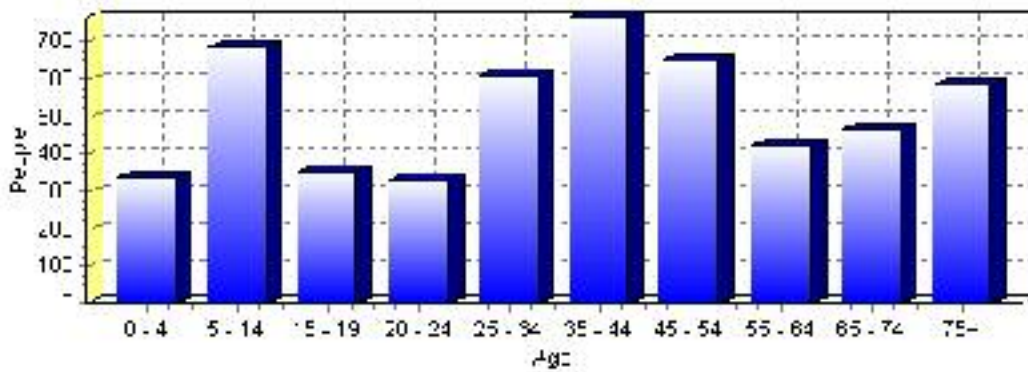
Total Population 1991-2001



Population by Age and Gender	1996 Male	1996 Female	1996 Total	2001 Male	2001 Female	2001 Total
Age 0 - 4	165	165	330	170	165	335
Age 5 - 14	350	355	705	370	315	685
Age 15 - 19	180	205	385	175	180	355
Age 20 - 24	180	160	340	175	155	330
Age 25 - 34	355	370	725	290	320	610
Age 35 - 44	380	375	755	385	380	765
Age 45 - 54	255	295	550	320	325	645
Age 55 - 64	205	220	425	205	215	420
Age 65 - 74	190	270	460	210	255	465
Age 75 and older	185	360	545	200	385	585
Total All Persons	2,455	2,765	5,220	2,500	2,715	5,215

Source: Statistics Canada 1996 & 2001 Census (numbers may not add up due to rounding)

Stettler Population by Age Group (2001)

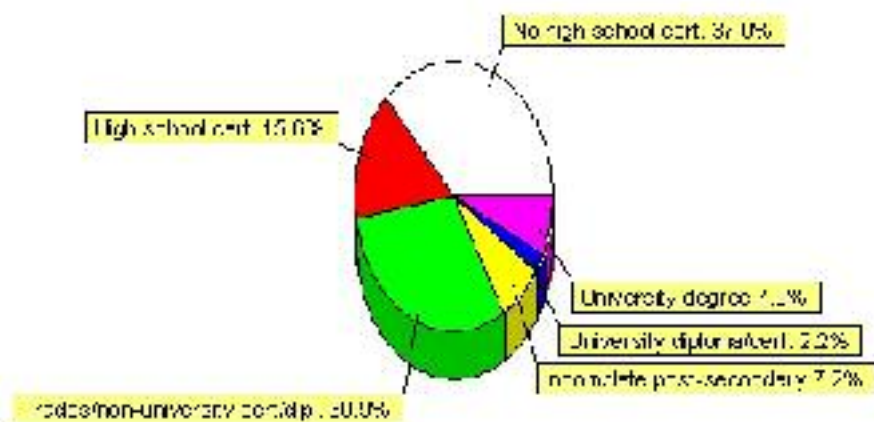


Education Statistics

Highest level of schooling for Population 20yrs and older	2001	%
People without high school certificates	1,340	36.97%
People with high school certificates	565	15.59%
People with trades or non-university certificate or diploma	1,120	30.90%
People with post-secondary education (not completed)	260	7.17%
People with university diploma/certificate	80	2.21%
People with university degree	255	7.03%
Total Population 20 years and older	3,625	100.00%

Source: Statistics Canada 2001 Census (numbers may not add up due to rounding)

Stettler Highest Level of Schooling 2001



Population with Post Secondary Qualifications	1996	%	2001	%
Agriculture and biological sciences	40	2.81%	75	5.15%
Commerce, management and business administration	275	19.30%	275	18.90%
Educational, recreational and counseling services	220	15.44%	210	14.43%
Engineering and applied science tech. and trades	480	33.68%	430	29.55%
Engineering and applied sciences	25	1.75%	0	0.00%
Fine and applied arts	90	6.32%	60	4.12%
Health professionals, science and technologies	185	12.98%	265	18.21%
Humanities and related fields	70	4.91%	60	4.12%
Mathematics and physical sciences	10	0.70%	20	1.37%
Social sciences and related fields	20	1.40%	60	4.12%
Other and/or no specialization	0	0.00%	0	0.00%
Total people with post secondary qualifications	1,425	100.00%	1,455	100.00%
Females with post-secondary qualifications	660	46.32%	745	51.20%
Males with post-secondary qualifications	765	53.68%	710	48.80%

Source: Statistics Canada 1996 & 2001 Census (numbers may not add up due to rounding)

Labour Force

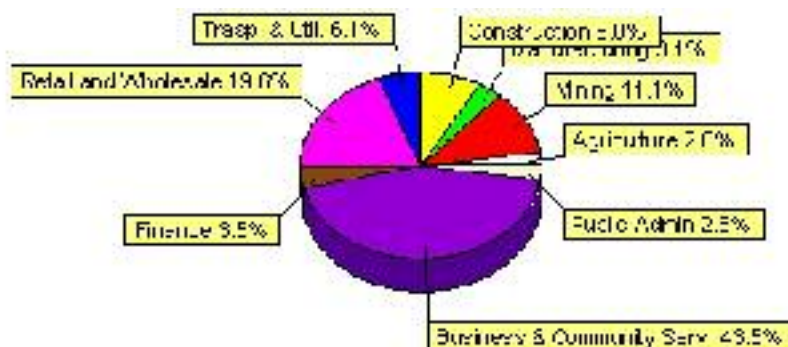
Labour force by activity	1996	2001
In the labour force, both sexes	2,645	2,710
Not in the labour force, both sexes	1,335	1,260
Total population 15 and over	3,980	3,975
Employed, both sexes	2,505	2,595
Unemployed, both sexes	140	120
Participation rate, both sexes	67.00%	68.00%
Unemployment rate, both sexes	5.00%	4.00%

Source: Statistics Canada 1996 & 2001 Census (numbers may not add up due to rounding)

Labour Force by Industry Division	1996	% of total	2001	% of total
Agriculture	45	1.72%	70	2.59%
Mining	370	14.15%	300	11.11%
Manufacturing	100	3.82%	85	3.15%
Construction	185	7.07%	215	7.96%
Transportation. & Utilities	165	6.31%	165	6.11%
Retail and Wholesale	660	25.24%	530	19.63%
Finance	90	3.44%	95	3.52%
Business & Community Services	725	27.72%	1,175	43.52%
Public Administration	75	2.87%	70	2.59%
Total All Industries	2,615	100.00%	2,700	100.00%

Source: Statistics Canada 1996 & 2001 Census (numbers may not add up due to rounding)

Stettler Labour Force By Industry - 2001



Labour Force by Major Occupational Groups	1996	%	2001	%
Management occupations	255	9.77%	305	11.30%
Business, Finances and administrative occupations	395	15.13%	375	13.89%
Natural and applied sciences and related occupations	80	3.07%	110	4.07%
Health occupations	150	5.75%	150	5.56%
Occupations in social science; education; government and religion	110	4.21%	185	6.85%
Occupations in art; culture; recreation and sport	50	1.92%	45	1.67%

Sales and service occupations	805	30.84%	745	27.59%
Trades; transport; equipment operators and related occupations	450	17.24%	510	18.89%
Occupations unique to primary industry	215	8.24%	225	8.33%
Occupations unique to processing; manufacturing and utilities	105	4.02%	60	2.22%
Occupations not elsewhere classified	35	1.34%	15	0.56%
Total - All Occupations (major groups)	2,610	100.00%	2,700	100.00%
Females - All Occupations	1,185	45.40%	1,260	46.67%
Males - All Occupations	1,425	54.60%	1,440	53.33%

Source: Statistics Canada 1996 & 2001 Census (numbers may not add up due to rounding)

Income

Family Income (Number of Families)	1996	%	2001	%
less than \$19,999	125	9.92%	85	7.73%
\$20,000 - \$39,999	300	23.81%	355	32.27%
\$40,000 - \$59,999	300	23.81%	350	31.82%
\$60,000 and over	535	42.46%	365	33.18%
Total number of families	1,260	100.00%	1,155	105.00%
Average family income	\$55,374		\$59,739	
Median family income	\$51,375		\$53,852	

Source: Statistics Canada 1996 & 2001 Census (numbers may not add up due to rounding)

Household Income (Number of Households)	1996	%	2001	%
less than \$19,999	525	25.30%	440	20.75%
\$20,000 - \$39,999	570	27.47%	565	26.65%
\$40,000 - \$59,999	375	18.07%	475	22.41%
\$60,000 and over	250	12.05%	645	30.42%
Total number of households	2,075	100.00%	2,120	100.00%
Average household income	\$43,801		\$48,557	
Median household income	\$37,409		\$40,377	

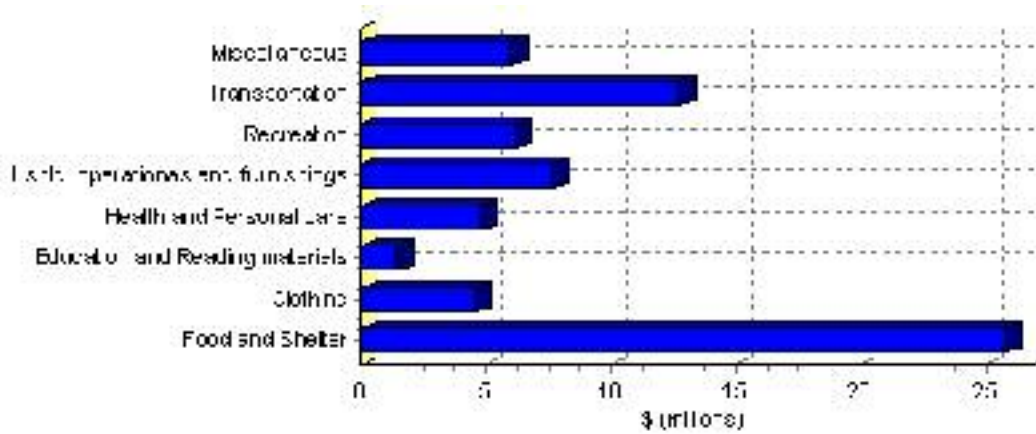
Source: Statistics Canada 1996 & 2001 Census (numbers may not add up due to rounding)

Family Expenditure

Expenditure Category	1992	% of total	1996	% of total
Food and Shelter	\$20,955,670	37.48%	\$25,833,274	37.29%
Clothing	\$3,790,090	6.78%	\$4,546,372	6.56%
Education and Reading materials	\$1,154,520	2.07%	\$1,483,981	2.14%
Health and Personal care	\$3,507,510	6.27%	\$4,779,720	6.90%
Hshld. operations and furnishings	\$6,141,390	10.98%	\$7,663,802	11.06%
Recreation	\$4,466,300	7.99%	\$6,204,428	8.96%
Transportation	\$11,435,640	20.45%	\$12,733,818	18.38%
Miscellaneous	\$4,434,560	7.93%	\$6,032,166	8.71%
Total Current Consumption	\$55,908,530	100.00%	\$69,277,561	100.00%
Total # of Households	1,970		2,074	
Average Consumption per Household	\$28,380		\$33,403	

Source: Statistics Canada Family Expenditure Survey 1992 & 1996 (numbers may not add up due to rounding).

Stettler Family Expenditures (1996)

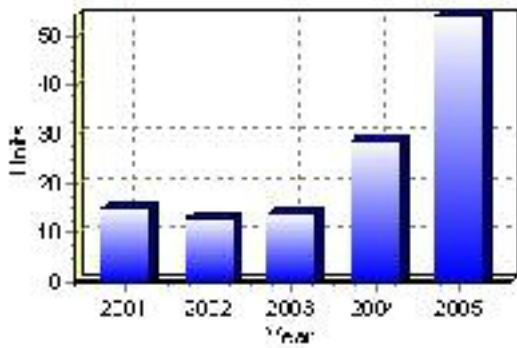


Building Permits

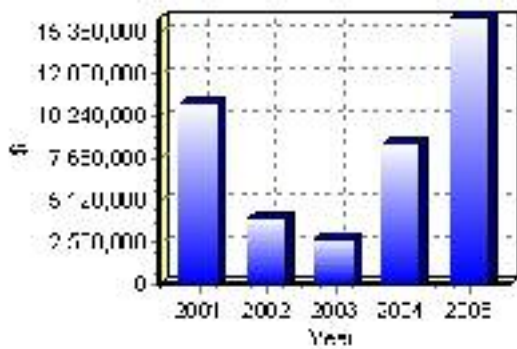
Total Building Permit Values	2001	2002	2003	2004	2005
Building Permits Value, Commercial	\$3,869,000	\$1,250,000	\$553,000	\$3,628,000	\$5,620,000
Building Permits Value, Industrial	\$2,556,000	\$476,000	\$54,000	\$422,000	\$1,070,000
Building Permits Value, Institutional	\$2,072,000	\$335,000	\$254,000	\$50,000	\$21,000
Building Permits Value, Residential	\$2,440,000	\$1,950,000	\$1,992,000	\$4,402,000	\$9,449,000
Building Permits Value, Total	\$10,937,000	\$4,011,000	\$2,853,000	\$8,502,000	\$16,160,000
Total Housing Starts	15	13	14	29	54

Source: Statistics Canada 2000-2004 Building Permits (numbers may not add up due to rounding)

Total Housing Starts



Value of Building Permits



Dwellings

Occupied Private Dwellings by Type	1996	% of total	2001	% of total
Apartments	285	13.77%	260	12.26%
Detached Duplexes	55	2.66%	35	1.65%
Movable Dwellings	185	8.94%	190	8.96%
Other single attached house	10	0.48%	15	0.71%
Row and semi-detached house	120	5.80%	120	5.66%
Single-detached house	1,415	68.36%	1,500	70.75%
Total number of occupied private dwellings	2,070	100.00%	2,120	100.00%
Private dwellings, owned	1,475	71.26%	1,475	69.58%
Private Dwellings, rented	595	28.74%	645	30.42%

Source: Statistics Canada 1996 & 2001 Census (numbers may not add up due to rounding)

Private Dwellings by Period of Construction	# of Dwellings	% of total
Period of construction, before 1946	290	13.74%
Period of construction, 1946 - 1960	375	17.77%
Period of construction, 1961 - 1970	300	14.22%
Period of construction, 1971 - 1980	695	32.94%
Period of construction, 1981 - 1990	240	11.37%
Period of construction, 1991 - 2001	210	9.95%
Total number of private dwellings constructed	2,110	100.00%

Source: Statistics Canada 2001 Census (numbers may not add up due to rounding)

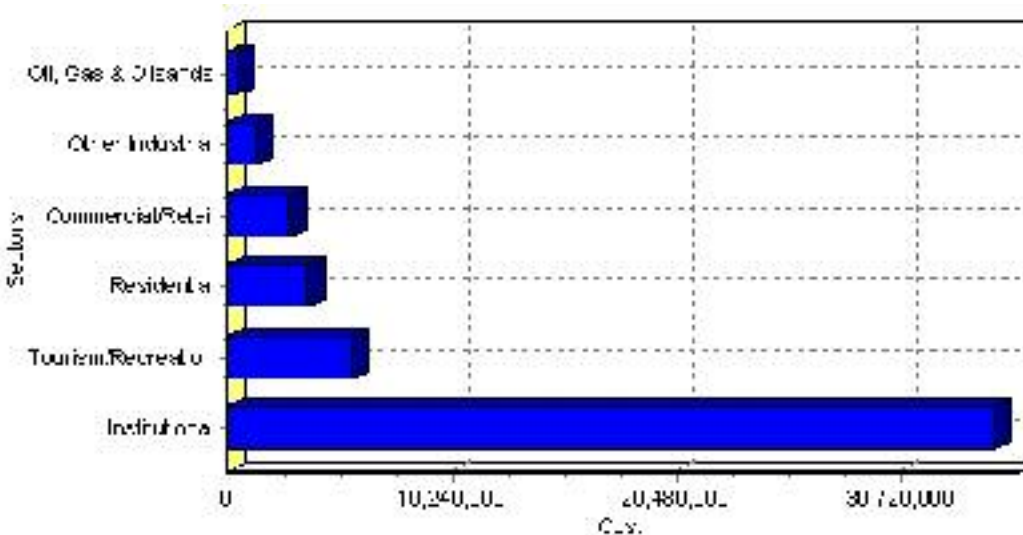
Projects

Summary of Projects in Stettler as of September 2006

Project Sector	Number of Projects	Project Cost
Institutional	6	\$34,975,000
Tourism/Recreation	2	\$5,691,000
Residential	8	\$3,698,360
Commercial/Retail	10	\$2,816,650
Other Industrial	4	\$1,284,000
Oil, Gas & Oilsands	2	\$501,000
Total	32	\$48,966,010

This inventory lists projects in Alberta that have recently been completed, are under construction, or are proposed to start construction. Not all projects are listed due to reasons of confidentiality and/or due to information not being available at the time of printing. Project data is obtained from public information sources, where possible, this data has been verified with the project proponent/developer, users of the Inventory may wish to confirm project data with the proponent/developer. The inventory does not breakdown project expenditures by any given year. The cost of a project is the value of expenditures expected over all phases of project construction, which may span over two or more years. Cost of projects listed in the Inventory are estimated values only. Source: Alberta Economic Development, 2004.

Value of Projects by Sector (as of September 2006)



Project Status	Number of Projects	Project Cost
Announced	7	\$10,561,500
Completed	1	\$5,000,000
Proposed	2	\$23,400,000
Under Construction	22	\$10,004,510
Total	32	\$48,966,010

This inventory lists projects in Alberta that have recently been completed, are under construction, or are proposed to start construction. Not all projects are listed due to reasons of confidentiality and/or due to information not being available at the time of printing. Project data is obtained from public information sources, where possible, this data has been verified with the project proponent/developer, users of the Inventory may wish to confirm project data with the proponent/developer. The inventory does not breakdown project expenditures by any given year. The cost of a project is the value of expenditures expected over all phases of project construction, which may span over two or more years. Cost of projects listed in the Inventory are estimated values only. Source: Alberta Economic Development, 2004.

Largest Projects in Stettler as of September 2006

Company Name	Project Description	Project Location	Project Cost	Construction Schedule	Status
David Thompson Health Region	Stettler Hospital and Care Centre Re-Development	Stettler	\$17,500,000	-	Proposed
Canalta Developments	'Renaissance Gardens' SUPPORTIVE LIVING COMPLEX	Stettler	\$9,000,000	2006-2007	Announced
Alberta Infrastructure and Transportation*	Modernization	Stettler	\$5,900,000	-	Proposed
Canalta Development	Ramada Hotel	Stettler	\$5,000,000	2006-2006	Completed
Canalta Real Estate Service	New Dialysis Unit	Stettler	\$1,815,000	2006-2006	Under Construction
Canalta Real Estate Service	Motel Addition	Stettler	\$1,000,000	2006-2006	Under Construction
1113359 Alberta Ltd.	New Commercial Building	Stettler	\$691,000	2006-2006	Under Construction
Norm Hamilton Construction	NEW FOUR PLEX	Stettler	\$682,080	2006-2006	Under Construction
1139817 Alberta Ltd	NEW FOUR PLEX (1)	Stettler	\$622,110	2006-2006	Under Construction
1139817 Alberta Ltd	NEW FOUR PLEX (2)	Stettler	\$622,110	2006-2006	Under Construction

Disclaimer: Information in this profile has been provided from a variety of external sources. Although every effort has been made to ensure the accuracy, currency and reliability of the content and data, AlbertaFirst.com Ltd. accepts no responsibility in this regard.

© AlbertaFirst.com Ltd., 2006.