

Castor

www.castor.ca

Welcome

Welcome to our community. We hope the information contained within this profile is useful. If additional information is required, please contact our representative from the "Key Contacts" section.

Area Overview

The Town of Castor is situated at the crossroads of Highway 12 and Highway 36. The town is a service centre for the surrounding farming community.

Castor offers everything required for daily needs. It boasts a competitive retail sector and commercial industries. Main Street includes grocery stores, a drug store, restaurants, financial institutions, hardware, and various service centres. In addition, various contractors are available for all types of work including building construction, plumbing, gas-fitting and electrical work. Service stations are available for vehicle repairs and parts.

The Town is very picturesque with well-maintained homes and gardens. The streets are tree-lined, and the natural beauty is very impressive. Throughout the community, a natural pond system dissects the town providing an enjoyable area for walks and play areas.

Castor prides itself in its continuous efforts to provide a quality of life second to none. The residents co-operate with each other for the betterment of the town. The family unit as a whole is an important aspect for the townspeople. The facilities, entertainment and social aspects are maintained with the family unit in mind.

Community Services

Municipal

[Town of Castor](#)

Box 475

Castor, Alberta

T0C 0X0

Tel: 403-882-3215

Fax: 403-882-3454

Recreation

Public Utilities

Public Library

Provincial

Transportation and Utilities

Federal

Canada Post

Community Lifestyle

Recreation

The recreation facilities and programs offered to the public are first-rate. The arena, curling rink, tennis courts, swimming pool and parks are actively used by the residents. These facilities have been well maintained over the years. The Golf Course offers a 9-hole, grass green course with a new clubhouse. The curling rink was completed in 1988.

Various recreation programs are offered throughout the year. Minor hockey and ball programs are easily accessible at low cost. Summer swim club, arts & crafts, dance club, gymnastics, 4-H, woodworking and various recreation and culture programs are offered on a regular basis. For adults, there is hockey, curling, ball, golfing, aerobics and other activities offered throughout the year. The Recreation Department is continuously working to build new programs for both young people and adults.

Other recreation facilities include the Valley Ski Hill [14 miles N.E. of Castor], R.V. campground [water, sewage & electrical], various playgrounds, and boating.

Community Organizations

Many service organizations are actively involved in the community.

Religious Facilities

All Saints Anglican Church

Missionary Church

St. John Lutheran Church

Our Lady of Grace Catholic Church

United Church of Canada

Castor Community Lighthouse Church

Special Annual Events/Attractions

Our museum and library meets the cultural needs of the community. For the past 5 years the Castor Little Theatre has produced plays for the community. The play runs for 2 weeks as a dinner theatre and is a worthwhile evening for anyone who has attended the productions.

Other highlights include Winterfest, which includes all types of entertainment, such as a trade show, fireworks, cutter parade and ice sculpting. The whole community works hard to provide a weekend of fun for all ages. Also, the Annual Fair is held in August, and continues to grow every year.

Hospitality

Accommodation

Cosmopolitan Hotel

Grey Goose Motel

Restaurants

Badgers Restaurant
Shangri-la Inn
Tasty Mill
White Goose Family Restaurant

Economic Base

Agriculture is the main economic base in the Castor area. Cattle and hog production is a major contributor to the economic stability of the area. Grain farming in the area is also very strong, with all varieties of crops being grown. The crops are of high quality and quantity. Castor is also the central loading station for hogs going to market from the east-central Alberta area.

It is expected that agriculture will continue to flourish in the area. Good management and continued stability will be maintained in the future.

Economic Facts

Small operations such as retail, concrete mix, service industries and the hospital and county seat have provided the main employment in the area.

Major Businesses Products/Services

Filipenko Brothers Concrete Cement Production
AG Foods, Food Town Food Service
Value Drug Mart Drug Store
Home Hardware

Financial Institutions

Alberta Treasury Branch
Battle River Credit Union

Education

Castor is part of the Clearview Regional School Division #24, headquartered in Stettler [Tel: 403-742-3331] and the East Central Alberta Catholic Separate School Division #16, headquartered in Wainwright [Tel: 403-842-3992].

Over the years many of Castor's students have received provincial recognition for their accomplishments in education, which speaks highly of the quality of education in the area.

Public

Gus Wetter School provides education for Grades K to 12.

Separate

Theressetta Roman Catholic Separate School provides education for Grades 1 to 9.

Private

N/A

Emergency Services

Fire Protection

Castor is served by a 12-member volunteer fire department [Tel: 403-882-3333].

Police Services

Castor is served by the Coronation detachment of the Royal Canadian Mounted Police

[RCMP] [Tel: 403-578-3622]. The detachment has 4 officers.

Ambulance Services

East Central Ambulance Association has 2 units that serve Castor [Tel: 403-882-3383].

Health Care

Our Lady of the Rosary Hospital has 25 active-treatment beds. Other medical services include 2 medical clinics, 1 dental clinic, and the Health Unit. Ambulance service is also available.

There is also a senior citizen's lodge in Castor.

Key Contacts for Business Development

Municipal

Town of Castor

Box 475

Castor, Alberta

T0C 0X0

Tel: 403-882-3215

Fax: 403-882-3454

E-Mail: castor@telusplanet.net

Garry DeVloo

Mayor

Micheal Yakielashek

Administrator

J.D.Klasson, Economic Development Officer

toll free 888-882-3156

Provincial (Updated December 2004)

Alberta Economic Development

2nd Floor, Provincial Building

4920 - 51 Street

Red Deer, Alberta

T4N 6K8

Tel: 403-340-5300

Fax: 403-340-5231

Andre Tremblay, *Regional Manager*

andre.tremblay@gov.ab.ca

Dawna Allard, *Regional Development Officer*

dawna.allard@gov.ab.ca

Lisa Houle, *Regional Project Officer*

lisa.houle@gov.ab.ca

Doug Griffiths

Member of the Legislative Assembly [MLA]

Wainwright

Constituency Constituency Office

#201, 1006 - 4 Avenue

Wainwright

T9W 2R3

Phone: (780) 842-6177

Fax: (780) 842-3171

battleriver.wainwright@assembly.ab.ca

Legislature Office

#130 Legislature Building

10800-97 Avenue

Edmonton

T5K 2B6

Phone: (780) 422-5369

Fax: (780) 422-5385

Federal (Updated May 2006)

Kevin Sorenson

Member of Parliament [MP]

Crowfoot Constituency

Parliamentary Address

House of Commons Ottawa, Ontario

K1A 0A6

Telephone: (613) 947-4608

Fax: (613) 947-4611

E-Mail: Sorenson.K@parl.gc.ca

Constituency Address

4945 - 50th Street

Camrose, Alberta

T4V 1P9

Telephone: (780) 608-4600 1-800-665-4358

Fax: (780) 608-4603

TTY:
E-Mail:

Location

The Town of Castor is located in the County of Paintearth #18, in east-central Alberta. It is 160 km east of Red Deer, 245 km southeast of Edmonton, and 290 km northeast of Calgary.

Post Secondary Education

Post-secondary education is available from Red Deer Community College in Red Deer, Olds College in Olds, and from Edmonton or Calgary-based post-secondary institutions.

Taxation

	<u>Residential/Farmland</u>	<u>Non-Residential</u>
2005		
Municipal Tax Rate	19.8402	19.8402
Education - Alberta School Foundation Fund Tax Rate	5.0877	7.3749
Education Opted Out Tax Rate	5.0877	7.3749
Seniors Lodge Accommodation Tax Rate	.4316	.4316

Mill Rates [2002]

Residential-Public 23.60
Residential-Separate 23.60
Non-Residential-Public 26.58
Non-Residential-Separate 26.58

Transportation

Air Service

The Castor Airport is a local air-strip. The nearest commercial and freight services are offered at Calgary International Airport or Edmonton International Airport.

Highways

Connecting highways are Highway 12 and Highway 36. The high quality grade of the highways makes easy access both north-south and east-west. Should access to Edmonton and the northwest be required, the highway allows the journey via Camrose in a little over two hours.

Trucking Firms

Hiway 9 Express
Dove Transport Ltd.
East Country Delivery

Bus Services

Greyhound Bus Lines provides regularly scheduled inter-community service.

Couriers and Taxis

Greyhound Courier Express, Loomis, Purolator

Utilities

Electrical Power

Atco

Tel: 403-882-3255

Natural Gas

Town of Castor [Urban]

Box 479

Castor, Alberta

T0C 0X0

Tel: 403-882-3215

Paintearth Gas Co-op Ltd. [Rural]

Box 5

Castor, Alberta

T0C 0X0

Tel: 403-882-3974

Telephone

Telus

4831 - 51 Street

Red Deer, Alberta

T4N 2A6

Tel: 403-342-3611

Water Supply

The source of water is the Parr Reservoir. The reservoir capacity is 51,650 cubic meters, the treated reservoir capacity is 817 cubic metres, and the design capacity is 2,182 cubic meters.

Waste Management

Sewage treatment is provided by a series of lagoons consisting of 4 short and 2 long detention ponds.

Residential garbage is collected weekly, while commercial and industrial garbage is collected twice weekly.

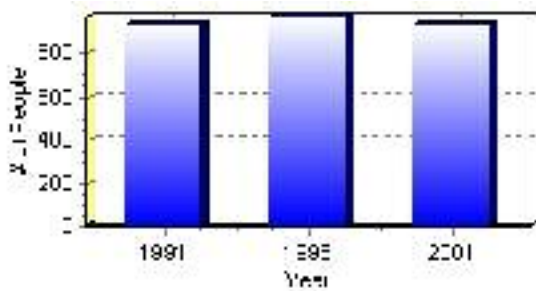
Population

Total Population

Population 2004*	935
Population 2003*	935
Population 2002*	935
Population 2001**	935
Population 2000*	970
Population 1996**	970
Population 1991**	933
Population % change 1991-1996	3.81%
Population % change 1996-2001	-3.74%

* Source: Official Population List, Alberta Municipal Affairs
** Source: Statistics Canada 1991, 1996, & 2001 Census

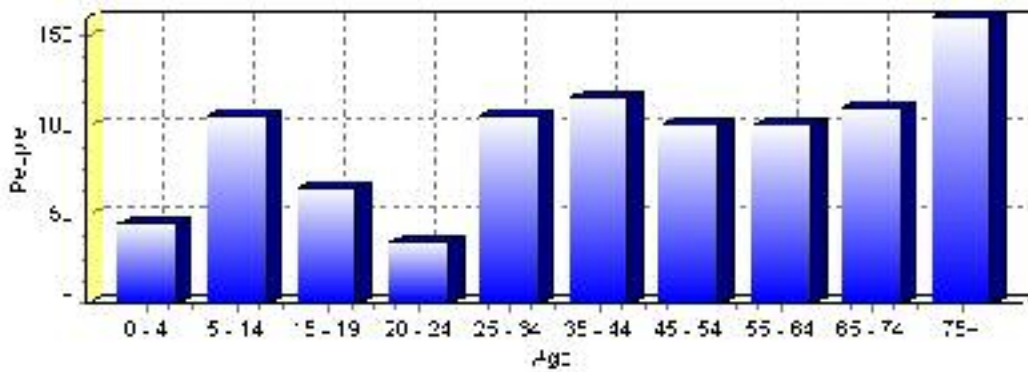
Total Population 1991-2001



Population by Age and Gender	1996 Male	1996 Female	1996 Total	2001 Male	2001 Female	2001 Total
Age 0 - 4	20	15	35	20	25	45
Age 5 - 14	60	55	115	60	45	105
Age 15 - 19	25	25	50	30	35	65
Age 20 - 24	30	30	60	15	20	35
Age 25 - 34	50	45	95	55	50	105
Age 35 - 44	55	65	120	60	55	115
Age 45 - 54	55	55	110	45	55	100
Age 55 - 64	50	55	105	55	45	100
Age 65 - 74	60	70	130	45	65	110
Age 75 and older	50	95	145	65	95	160
Total All Persons	460	515	975	450	485	935

Source: Statistics Canada 1996 & 2001 Census (numbers may not add up due to rounding)

Castor Population by Age Group (2001)

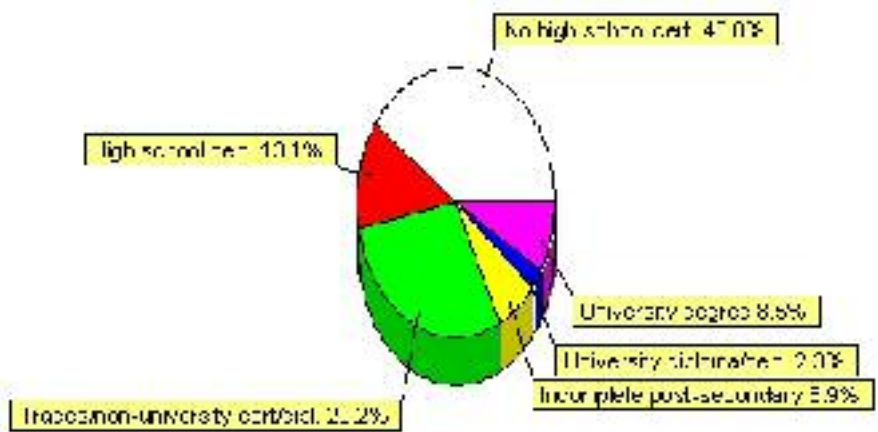


Education Statistics

Highest level of schooling for Population 20yrs and older	2001	%
People without high school certificates	260	40.00%
People with high school certificates	85	13.08%
People with trades or non-university certificate or diploma	190	29.23%
People with post-secondary education (not completed)	45	6.92%
People with university diploma/certificate	15	2.31%
People with university degree	55	8.46%
Total Population 20 years and older	650	100.00%

Source: Statistics Canada 2001 Census (numbers may not add up due to rounding)

Castor Highest Level of Schooling 2001



Population with Post Secondary Qualifications	1996	%	2001	%
Agriculture and biological sciences	25	10.00%	15	5.66%
Commerce, management and business administration	55	22.00%	35	13.21%
Educational, recreational and counseling services	40	16.00%	40	15.09%
Engineering and applied science tech. and trades	70	28.00%	100	37.74%
Engineering and applied sciences	0	0.00%	0	0.00%
Fine and applied arts	10	4.00%	10	3.77%
Health professionals, science and technologies	35	14.00%	35	13.21%
Humanities and related fields	0	0.00%	10	3.77%
Mathematics and physical sciences	10	4.00%	10	3.77%
Social sciences and related fields	10	4.00%	0	0.00%
Other and/or no specialization	0	0.00%	0	0.00%
Total people with post secondary qualifications	250	100.00%	265	100.00%
Females with post-secondary qualifications	115	46.00%	100	37.74%
Males with post-secondary qualifications	135	54.00%	165	62.26%

Source: Statistics Canada 1996 & 2001 Census (numbers may not add up due to rounding)

Labour Force

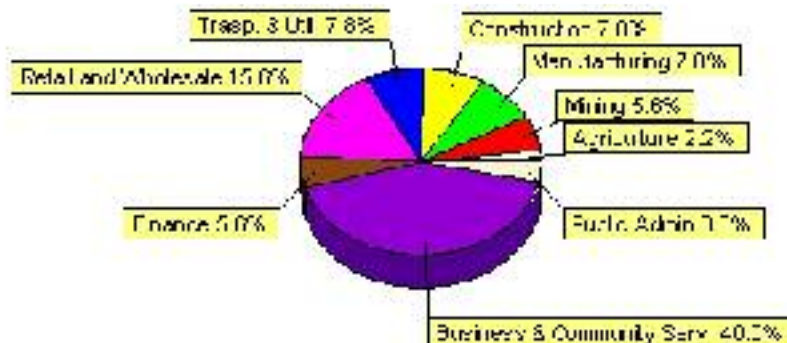
Labour force by activity	1996	2001
In the labour force, both sexes	480	450
Not in the labour force, both sexes	270	280
Total population 15 and over	750	730
Employed, both sexes	445	445
Unemployed, both sexes	35	10
Participation rate, both sexes	64.00%	62.00%
Unemployment rate, both sexes	7.00%	2.00%

Source: Statistics Canada 1996 & 2001 Census (numbers may not add up due to rounding)

Labour Force by Industry Division	1996	% of total	2001	% of total
Agriculture	45	9.57%	10	2.22%
Mining	70	14.89%	25	5.56%
Manufacturing	0	0.00%	35	7.78%
Construction	35	7.45%	35	7.78%
Transportation. & Utilities	50	10.64%	35	7.78%
Retail and Wholesale	70	14.89%	70	15.56%
Finance	20	4.26%	25	5.56%
Business & Community Services	120	25.53%	180	40.00%
Public Administration	0	0.00%	15	3.33%
Total All Industries	470	100.00%	450	100.00%

Source: Statistics Canada 1996 & 2001 Census (numbers may not add up due to rounding)

Castor Labour Force By Industry - 2001



Labour Force by Major Occupational Groups	1996	%	2001	%
Management occupations	15	3.19%	45	10.00%
Business, Finances and administrative occupations	55	11.70%	55	12.22%
Natural and applied sciences and related occupations	0	0.00%	0	0.00%
Health occupations	25	5.32%	25	5.56%
Occupations in social science; education; government and religion	25	5.32%	30	6.67%
Occupations in art; culture; recreation and sport	20	4.26%	10	2.22%

Sales and service occupations	140	29.79%	130	28.89%
Trades; transport; equipment operators and related occupations	100	21.28%	120	26.67%
Occupations unique to primary industry	75	15.96%	30	6.67%
Occupations unique to processing; manufacturing and utilities	15	3.19%	10	2.22%
Occupations not elsewhere classified	10	2.13%	10	2.22%
Total - All Occupations (major groups)	470	100.00%	450	100.00%
Females - All Occupations	230	48.94%	195	43.33%
Males - All Occupations	240	51.06%	255	56.67%

Source: Statistics Canada 1996 & 2001 Census (numbers may not add up due to rounding)

Income

Family Income (Number of Families)	1996	%	2001	%
less than \$19,999	20	8.33%	25	13.51%
\$20,000 - \$39,999	110	45.83%	105	56.76%
\$40,000 - \$59,999	65	27.08%	70	37.84%
\$60,000 and over	45	18.75%	25	13.51%
Total number of families	240	100.00%	225	121.62%
Average family income	\$44,738		\$45,894	
Median family income	\$39,752		\$39,193	

Source: Statistics Canada 1996 & 2001 Census (numbers may not add up due to rounding)

Household Income (Number of Households)	1996	%	2001	%
less than \$19,999	105	24.42%	95	22.89%
\$20,000 - \$39,999	160	37.21%	180	43.37%
\$40,000 - \$59,999	90	20.93%	85	20.48%
\$60,000 and over	30	6.98%	60	14.46%
Total number of households	430	100.00%	415	100.00%
Average household income	\$37,009		\$38,184	
Median household income	\$27,345		\$35,513	

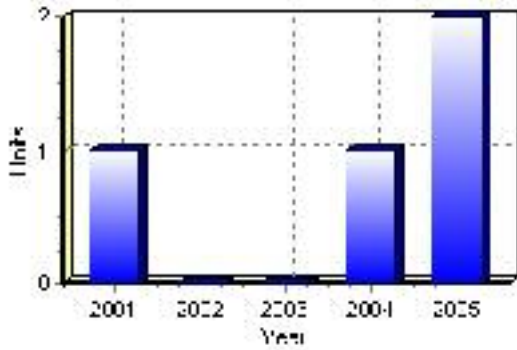
Source: Statistics Canada 1996 & 2001 Census (numbers may not add up due to rounding)

Building Permits

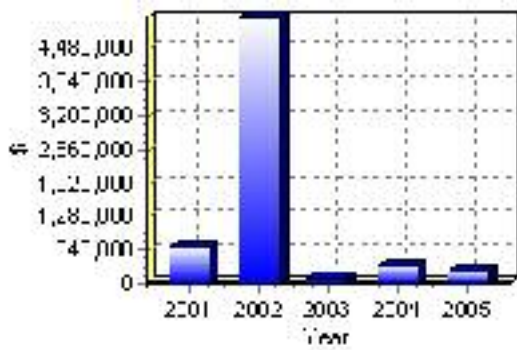
Total Building Permit Values	2001	2002	2003	2004	2005
Building Permits Value, Commercial	\$100,000	\$124,000	\$0	\$95,000	\$40,000
Building Permits Value, Industrial	\$31,000	\$0	\$0	\$0	\$0
Building Permits Value, Institutional	\$349,000	\$4,909,000	\$0	\$15,000	\$0
Building Permits Value, Residential	\$195,000	\$33,000	\$120,000	\$229,000	\$202,000
Building Permits Value, Total	\$675,000	\$5,066,000	\$120,000	\$339,000	\$242,000
Total Housing Starts	1	0	0	1	2

Source: Statistics Canada 2000-2004 Building Permits (numbers may not add up due to rounding)

Total Housing Starts



Value of Building Permits



Dwellings

Occupied Private Dwellings by Type	1996	% of total	2001	% of total
Apartments	45	10.47%	25	6.02%
Detached Duplexes	0	0.00%	0	0.00%
Movable Dwellings	0	0.00%	30	7.23%
Other single attached house	0	0.00%	10	2.41%
Row and semi-detached house	0	0.00%	10	2.41%
Single-detached house	375	87.21%	345	83.13%
Total number of occupied private dwellings	430	100.00%	415	100.00%
Private dwellings, owned	315	73.26%	315	75.90%
Private Dwellings, rented	110	25.58%	100	24.10%

Source: Statistics Canada 1996 & 2001 Census (numbers may not add up due to rounding)

Private Dwellings by Period of Construction	# of Dwellings	% of total
Period of construction, before 1946	100	24.39%
Period of construction, 1946 - 1960	110	26.83%
Period of construction, 1961 - 1970	70	17.07%
Period of construction, 1971 - 1980	55	13.41%
Period of construction, 1981 - 1990	50	12.20%
Period of construction, 1991 - 2001	25	6.10%
Total number of private dwellings constructed	410	100.00%

Source: Statistics Canada 2001 Census (numbers may not add up due to rounding)

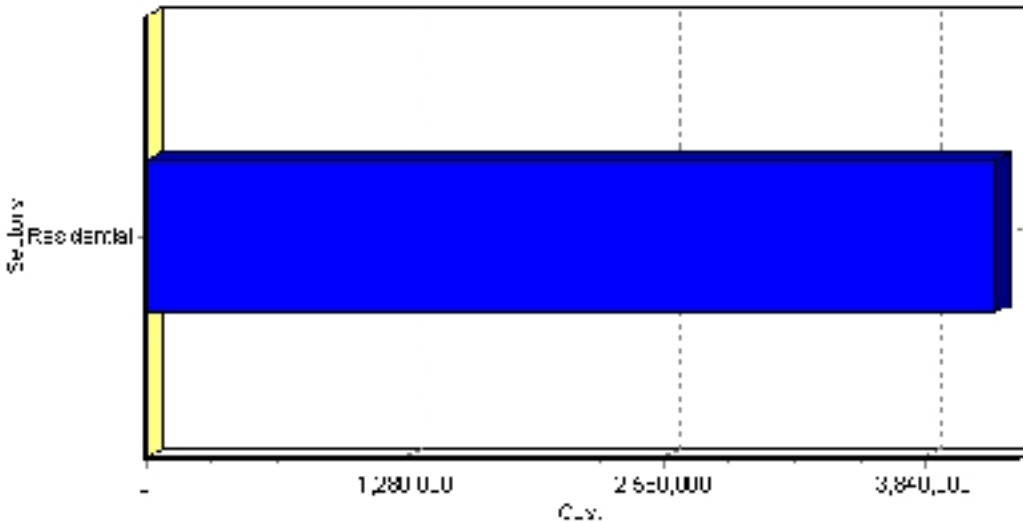
Projects

Summary of Projects in Castor as of September 2006

Project Sector	Number of Projects	Project Cost
Residential	3	\$4,186,690
Total	3	\$4,186,690

This inventory lists projects in Alberta that have recently been completed, are under construction, or are proposed to start construction. Not all projects are listed due to reasons of confidentiality and/or due to information not being available at the time of printing. Project data is obtained from public information sources, where possible, this data has been verified with the project proponent/developer, users of the Inventory may wish to confirm project data with the proponent/developer. The inventory does not breakdown project expenditures by any given year. The cost of a project is the value of expenditures expected over all phases of project construction, which may span over two or more years. Cost of projects listed in the Inventory are estimated values only. Source: Alberta Economic Development, 2004.

Value of Projects by Sector (as of September 2006)



Project Status	Number of Projects	Project Cost
Announced	2	\$3,946,690
Completed	1	\$240,000
Total	3	\$4,186,690

This inventory lists projects in Alberta that have recently been completed, are under construction, or are proposed to start construction. Not all projects are listed due to reasons of confidentiality and/or due to information not being available at the time of printing. Project data is obtained from public information sources, where possible, this data has been verified with the project proponent/developer, users of the Inventory may wish to confirm project data with the proponent/developer. The inventory does not breakdown project expenditures by any given year. The cost of a project is the value of expenditures expected over all phases of project construction, which may span over two or more years. Cost of projects listed in the Inventory are estimated values only. Source: Alberta Economic Development, 2004.

Largest Projects in Castor as of September 2006

Company Name	Project Description	Project Location	Project Cost	Construction Schedule	Status
Castor & District Housing Authority	PAINTEARTH LODGE EXPANSION	Castor	\$3,900,000	2006-2007	Announced
MacFarland Developments	MULTI-FAMILY / ADULT VILLAS	Castor	\$240,000	2006-2006	Completed
Castor and District Housing Authority	Paintearth Lodge - Repair / Maint	Castor	\$46,690	2006-2006	Announced

Disclaimer: Information in this profile has been provided from a variety of external sources. Although every effort has been made to ensure the accuracy, currency and reliability of the content and data, AlbertaFirst.com Ltd. accepts no responsibility in this regard.

© AlbertaFirst.com Ltd., 2006.