

# Oyen

[www.townofoyen.com](http://www.townofoyen.com)

## Welcome

On behalf of the residents of **Oyen** we would like to welcome your interest in our community. We appreciate the time and effort you are taking in assessing our community and hope that the information we have compiled is of benefit to you, whether you decide to locate a new business here or make Oyen your new residence. We invite you to make use of all our recreation facilities, or put your feet up and enjoy the quietness of the country. You will find the people friendly and helpful.

A small town is an ideal place to raise a family. Family ties are renewed and strengthened due to the commitment made by the community people through involvement in the various groups and organizations found here.

A wide range of businesses provide residents and visitors with services they would otherwise have to travel to larger centers for. Groceries, clothing, hardware, farm supplies and services, beauty salons, banking services, crafts, post office, accommodations and restaurants are all readily available.

We are proud of our community and the people who live here. We welcome you and trust that you will enjoy your time with us.

Sincerely,  
Mayor and Council

## Area Overview

The quiet tree-lined streets of Oyen, known as the "Oasis on the Prairie", provide a cool and tranquil oasis in the midst of prairie terrain. Traditional values of friendliness, service and hospitality continue to shape the lifestyles of Oyen citizens. Oyen is a modern urban community providing excellent municipal services, medical services, modern schools, recreation/leisure facilities, senior accommodations, and the benefits of "*big city*" life without "big city" problems.

## Community Services

### Municipal

Town of Oyen  
Box 360  
Oyen, Alberta  
T0J 2J0  
Tel: 403-664-3511  
Fax: 403-664-3712

- Tourist Information Centre
- Public Works
- Municipal Library

### Provincial

- Agriculture
- Fish & Wildlife
- Medical Examiner-Coroner

- Public Works, Supply and Services
- Transportation and Utilities

### **Federal**

- Canada Post Office
- Royal Canadian Mounted Police

## **Community Lifestyle**

### **Recreation**

Thoughtful planning and dedication by current and past Town Councilors, working hand in hand with the many community groups and organizations, has resulted in the development of superb leisure facilities. Most are within easy walking distance of residential areas. Local recreation and leisure facilities include:

- A 9-hole golf course with grass greens and club house
- Modern arena
- 6 ball diamonds (1 senior baseball diamond, 5 baseball/slow-pitch diamonds)
- 2 tennis courts · 6 horseshoe pits
- A 3-sheet curling rink
- An outdoor swimming pool
- Gun range
- Fishing pond
- Running track
- Fitness room (located in Arena)
- A senior citizens recreation center
- 2 RV camp grounds
- Parks and playgrounds
- Multipurpose Agriculture Building
- Legion Hall

### **Community Organizations**

Local community and recreation organizations include the golf club, gun club, minor hockey association, senior men's hockey, mini-fitness club, men's hardball, co-ed slow-pitch, boys and girls minor ball, soccer club, Lions/Lioness Club, Kinsmen/Kinettes Club, Knights of Columbus, Eastern Star, Oyen Masonic Lodge, agricultural society, historical society, chamber of commerce, Royal Canadian Legion, art club, youth group, dance club, Cub/Scouts and Brownies, 4-H clubs.

### **Religious Services**

Anglican Church of Canada  
 Sacred Heart Roman Catholic Church  
 St. Peter's Lutheran Church  
 Oyen United Church  
 Greek Orthodox Church  
 Oyen Evangelical Missionary Church

### **Special Annual Events/Attractions**

- Ladies Spring Morning --- May
- Annual Sports Day --- June
- Art Show --- June
- Farmer's Market --- June to Oct.
- Bull-A-Rama --- July
- Youth Heifer Show --- July
- Big Country Fair --- August
- Ducks Unlimited Banquet --- Oct.

· Festival of Trees --- Nov

## **Hospitality**

### Accommodation

- Antelope Inn Motel
- Alberta Hotel/Motel
- Prairie Bell Bed & Breakfast

## **Restaurants**

- 90's Restaurant
- Halfway Inn 96 Restaurant
- Library Pub The
- Oyen Family Restaurant
- Oyen Hotel Coffee Shop
- Lucky Dragon Restaurant
- Subway
- Tumbleweed Restaurant(1989)

## **Economic Base**

The major economic base of the area is agriculture, followed by the gas & oil industry. The Oyen area is home to 650 farm families and a total farm area of 1.8 million acres. Agricultural products include wheat, barley, rye, tame hay, oats, flax, canola, field peas, beef cattle and hogs.

The Town of Oyen is predominantly a service centre for the industries in the surrounding area.

## **Economic Facts**

The thriving business community serves a large market area that includes rural residents and smaller communities within a 80 to 100 Km radius.

### **Major Businesses Products/Services**

Doug's AG Foods Groceries  
Shop Easy Foods Groceries  
Oyen Greenhouses Trees, Plants,  
Oyen Welding & Machining Ltd. Machine Shop  
Oyen Paint and Autobody Automobile Services  
Fountain Tire Tire & Automotive Services  
UFA Fuel, Oil, Farm Supplies  
Kevin's Plumbing and Heating Plumbing  
John's Electric and Refridgeration Electrical  
Oyen Concrete Cement  
Allen's Agrocentre Machinery Dealer, Machinery, Parts, Supplies  
True Value Hardware Hardware Store  
CARA Research Centre  
Martin's Flooring and Painting Flooring, Painting, Framing, Draperies  
Oyen Pharmacy Drug Store  
Oyen Flowers & Giftware

## Financial Institutions

ATB Financial  
TD Canada Trust

## Education

Oyen is part of the Prairie Rose Regional School Division #8, headquartered in Dunmore [Tel: 1-800-468-7023], and the Christ Redeemer Catholic Separate Regional School Division #3, headquartered in Okotoks [Tel: 1-800-737-9383]. The town provides educational services to residents of an area of over 4000 square kilometers, and is a centre for education in the area.

### Daycare/Nursery

Oyen's daycare/nursery needs are currently being met by private baby-sitters.

### Public

Public schools in Oyen include Oyen Public School [K-9] and Oyen South Central High School [10-12].

### Separate

Assumption Roman Catholic School provides education for Grades [K-6]

### Private

N/A

## Emergency Services

### ALL EMERGENCY SERVICES ARE ACCESSED BY CALLING 911

#### Fire Protection

Oyen is served by a 15-member volunteer fire department, which has 2 fire trucks, 1 12,000 litre water tanker, 1 emergency response unit and the Jaws of Life [Tel: 403-664-3999].

#### Police Services

Oyen is served by a 3-member local detachment of the Royal Canadian Mounted Police [RCMP] [Tel: 403-664-3883].

#### Ambulance Services

Oyen currently receives privately owned ground ambulance service [Tel: 403-664-3212]. Fixed wing air ambulance and STARS with Advanced Cardiac Life Support are also available.

## Health Care

Acute Care: Big Country Hospital

-10 bed acute care -respite care

-24 hour emergency

-24 hour lab & x-ray

-palliative care

#### Ambulance:

Privately owned ground ambulance Fixed wing air ambulance STARS with Advanced Cardiac Life Support

#### Long-Term Care:

Big Country Continuing Care -30 funded beds

#### Public Health:

## Community Health Services

- home care
- home support
- public health nurse

## Physician Education:

Medical Teleconference program from University of Calgary

## Related Services:

Family & Community Support Services  
Meals on Wheels  
Ministerial Association  
Oyen Lodge  
Handi Bus  
Life Line

## Health Professionals:

- 2 physicians
- 1 dentist
- 1 optometrist
- 1 chiropractor
- physiotherapist
- early prevention dental services
- outpatient/inpatient respiratory services
- speech therapist/audiology
- recreation therapist
- health inspector
- occupational therapy
- mental health worker
- massage therapist

A 33-unit senior's lodge with a staff of 17 is also located in Oyen. The lodge provides individual bedrooms with communal eating and living areas. There are also 8 self contained units.

## Key Contacts for Business Development

### **Municipal**

Town of Oyen  
Box 360  
Oyen, Alberta  
T0J 2J0  
Tel: 403-664-3511  
Fax: 403-664-3712 email: [townoyen@telusplanet.net](mailto:townoyen@telusplanet.net)

Douglas Jones  
Mayor  
email: [douglasjones@telusplanet.net](mailto:douglasjones@telusplanet.net)

Debbie Kovitch  
Administrator

email: [debbiekovitch@telusplanet.net](mailto:debbiekovitch@telusplanet.net)

### **Provincial (Updated May 2006)**

Alberta Economic Development  
109 Provincial Building  
346 - 3 Street, S.E.  
Medicine Hat, Alberta  
T1A 0G7 Tel: 403-529-3630  
Fax: 403-529-3140

Elvira Smid  
Regional Manager  
[elvira.smid@gov.ab.ca](mailto:elvira.smid@gov.ab.ca)

Gloria Filgas, Information Officer  
[gloria.filgas@gov.ab.ca](mailto:gloria.filgas@gov.ab.ca)

Hon. Shirley McClellan  
Member of the Legislative Assembly [MLA]

Constituency Office  
Box 1386  
119 - 2nd Avenue West Hanna  
T0J 1P0  
Phone: (403) 854-4333  
Fax: (403) 854-2812  
[drumheller.stettler@assembly.ab.ca](mailto:drumheller.stettler@assembly.ab.ca)

Legislature Office  
#224 Legislature Building  
10800 - 97 Avenue  
Edmonton  
T5K 2B6  
Phone: (780) 427-8809  
Fax: (780) 428-1341

### **Federal (Updated May 2006)**

Kevin Sorenson  
Member of Parliament [MP]  
Crowfoot Constituency

Parliamentary Address  
House of Commons  
Ottawa, Ontario  
K1A 0A6  
Telephone: (613) 947-4608  
Fax: (613) 947-4611  
E-Mail: [Sorenson.K@parl.gc.ca](mailto:Sorenson.K@parl.gc.ca)

Constituency Address  
4945 - 50th Street  
Camrose, Alberta  
T4V 1P9  
Telephone: (780) 608-4600 1-800-665-4358  
Fax: (780) 608-4603

## Location



### Location

The Town of Oyen is located in south-eastern Alberta at the crossroads of Highways 9 and 41. Hi-Way 9 is a main route between Calgary and Saskatoon and Hi-Way 41 is the main north south route along the east side of Alberta. Oyen is 397 km southeast of Edmonton, 327 km east of Calgary and 187 km north of Medicine Hat.



## Post Secondary Education

The Big Country Adult Learning Council provides a variety of learning opportunities for adults. Post-secondary education is available at Medicine Hat Community College in Medicine Hat.

## Taxation

	<u>Residential/Farmland</u>	<u>Non-Residential</u>
<b>2005</b>		
Municipal Tax Rate	17.9000	17.9000
Education - Alberta School Foundation Fund Tax Rate	5.1060	7.5560
Education Opted Out Tax Rate	5.1060	7.5560
Seniors Lodge Accommodation Tax Rate	.3430	.3430

### Mill Rates [2001]

Residential - Public 22.334

Residential - Separate 22.334

Non-Residential - Public 25.423

Non-Residential - Separate 25.423

## Transportation

### Air Service

Oyen Municipal Airport (elevation 2498 ft.) has a 3000 ft. (914 metre) runway that is paved and lighted with a rotating beacon. The nearest passenger and air freight facilities are at Medicine Hat Municipal Airport, 187 km south of Oyen.

### Rail Service

Oyen is served by a Canadian National Railway secondary main line. Spur trackage is available.

### Highways

Connecting highways are Highway 9, Highway 41 and Secondary Road 895.

### Trucking Firms

Hi-Way #9 Express Ltd.

**Bus Services**

Regularly scheduled inter-community bus service is available. The town also operates a Handi-Bus for the handicapped and seniors.

**Couriers and Taxis**

Loomis, Purolator, Hi-Way 9 Express Ltd., UPS, Greyhound Canada, Canpar and Canada Post.

## Utilities

**Electrical Power**

ATCO Electric  
113 - 1 Avenue  
Oyen, Alberta  
Tel: 1-800-668-5506

**Natural Gas**

ATCO Gas  
113 - 1 Avenue  
Oyen, Alberta  
Tel: 403-664-8105

**Telephone**

Telus Ltd.  
Tel: 310-2255

**Water Supply**

The source of water is the Henry Kroeger Regional Water Commission.

**Waste Management**

Oyen's sewage system is comprised of a gravity flow collection system, a main sewage pump station and associated force main, gravity sewage outfall and 4 sewage lagoons [3 anaerobic ponds, 1 aerobic pond].

Oyen is a member of the Big Country Regional Waste Authority. Garbage is picked up once per week and is transferred to a waste transfer site, before being moved to Youngstown. A paper recycling program is also in operation in Oyen.



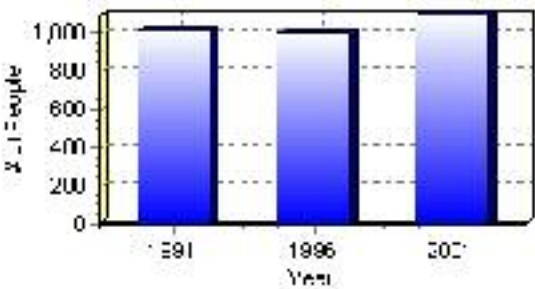
# Population

## Total Population

Population 2004*	1,099
Population 2003*	1,103
Population 2002*	1,082
Population 2001**	1,020
Population 2000*	1,078
Population 1996**	1,009
Population 1991**	1,019
Population % change 1991-1996	-0.99%
Population % change 1996-2001	6.75%

\* Source: Official Population List, Alberta Municipal Affairs  
\*\* Source: Statistics Canada 1991, 1996, & 2001 Census

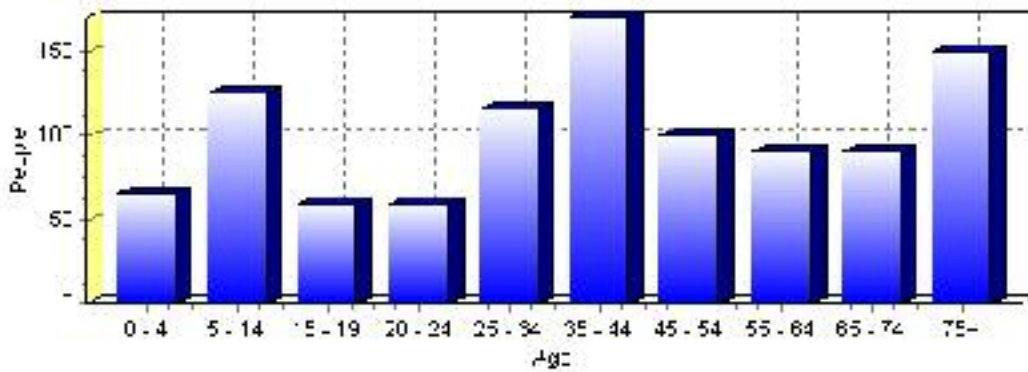
## Total Population 1991-2001



Population by Age and Gender	1996 Male	1996 Female	1996 Total	2001 Male	2001 Female	2001 Total
Age 0 - 4	35	25	60	30	35	65
Age 5 - 14	85	45	130	70	55	125
Age 15 - 19	35	25	60	35	25	60
Age 20 - 24	20	30	50	35	25	60
Age 25 - 34	85	75	160	50	65	115
Age 35 - 44	75	60	135	95	75	170
Age 45 - 54	45	45	90	50	50	100
Age 55 - 64	30	45	75	50	40	90
Age 65 - 74	50	65	115	35	55	90
Age 75 and older	55	70	125	65	85	150
Total All Persons	515	495	1,010	505	515	1,020

Source: Statistics Canada 1996 & 2001 Census (numbers may not add up due to rounding)

### Oyen Population by Age Group (2001)

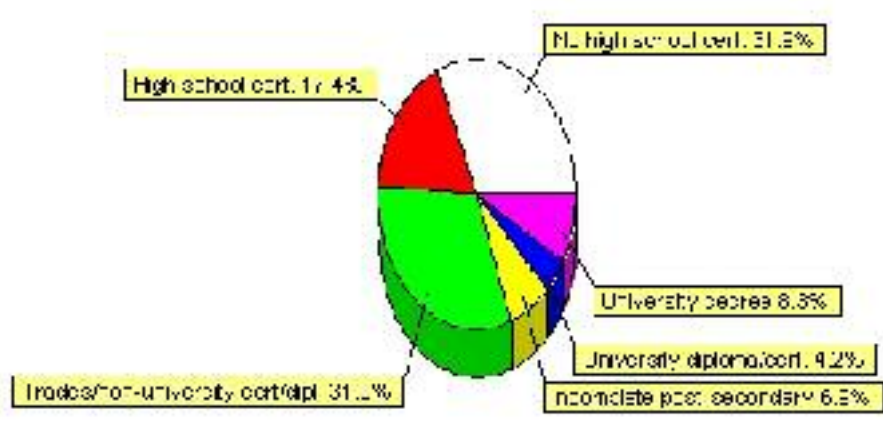


# Education Statistics

Highest level of schooling for Population 20yrs and older	2001	%
People without high school certificates	230	31.94%
People with high school certificates	125	17.36%
People with trades or non-university certificate or diploma	230	31.94%
People with post-secondary education (not completed)	50	6.94%
People with university diploma/certificate	30	4.17%
People with university degree	60	8.33%
Total Population 20 years and older	720	100.00%

Source: Statistics Canada 2001 Census (numbers may not add up due to rounding)

## Oyen Highest Level of Schooling 2001



Population with Post Secondary Qualifications	1996	%	2001	%
Agriculture and biological sciences	35	11.67%	0	0.00%
Commerce, management and business administration	25	8.33%	40	12.50%
Educational, recreational and counseling services	45	15.00%	85	26.56%
Engineering and applied science tech. and trades	100	33.33%	90	28.13%
Engineering and applied sciences	0	0.00%	0	0.00%
Fine and applied arts	10	3.33%	15	4.69%
Health professionals, science and technologies	70	23.33%	60	18.75%
Humanities and related fields	20	6.67%	30	9.38%
Mathematics and physical sciences	0	0.00%	0	0.00%
Social sciences and related fields	10	3.33%	0	0.00%
Other and/or no specialization	0	0.00%	0	0.00%
Total people with post secondary qualifications	300	100.00%	320	100.00%
Females with post-secondary qualifications	145	48.33%	170	53.13%
Males with post-secondary qualifications	155	51.67%	150	46.88%

Source: Statistics Canada 1996 & 2001 Census (numbers may not add up due to rounding)

## Labour Force

Labour force by activity	1996	2001
In the labour force, both sexes	575	565
Not in the labour force, both sexes	175	205
Total population 15 and over	750	775
Employed, both sexes	555	560
Unemployed, both sexes	20	10
Participation rate, both sexes	77.00%	73.00%
Unemployment rate, both sexes	3.00%	2.00%

Source: Statistics Canada 1996 & 2001 Census (numbers may not add up due to rounding)

Labour Force by Industry Division	1996	% of total	2001	% of total
Agriculture	110	18.97%	115	20.35%
Mining	10	1.72%	0	0.00%
Manufacturing	10	1.72%	10	1.77%
Construction	40	6.90%	40	7.08%
Transportation. & Utilities	50	8.62%	15	2.65%
Retail and Wholesale	75	12.93%	130	23.01%
Finance	40	6.90%	10	1.77%
Business & Community Services	215	37.07%	245	43.36%
Public Administration	10	1.72%	15	2.65%
Total All Industries	580	100.00%	565	100.00%

Source: Statistics Canada 1996 & 2001 Census (numbers may not add up due to rounding)

### Oyen Labour Force By Industry - 2001



Labour Force by Major Occupational Groups	1996	%	2001	%
Management occupations	65	11.30%	35	6.19%
Business, Finances and administrative occupations	75	13.04%	75	13.27%
Natural and applied sciences and related occupations	10	1.74%	0	0.00%
Health occupations	30	5.22%	40	7.08%
Occupations in social science; education; government and religion	35	6.09%	55	9.73%
Occupations in art; culture; recreation and sport	15	2.61%	15	2.65%

Sales and service occupations	140	24.35%	140	24.78%
Trades; transport; equipment operators and related occupations	100	17.39%	55	9.73%
Occupations unique to primary industry	100	17.39%	145	25.66%
Occupations unique to processing; manufacturing and utilities	10	1.74%	10	1.77%
Occupations not elsewhere classified	0	0.00%	0	0.00%
Total - All Occupations (major groups)	575	100.00%	565	100.00%
Females - All Occupations	275	47.83%	265	46.90%
Males - All Occupations	300	52.17%	300	53.10%

Source: Statistics Canada 1996 & 2001 Census (numbers may not add up due to rounding)

---

## Income

<b>Family Income (Number of Families)</b>	<b>1996</b>	<b>%</b>	<b>2001</b>	<b>%</b>
less than \$19,999	30	11.54%	20	8.16%
\$20,000 - \$39,999	50	19.23%	65	26.53%
\$40,000 - \$59,999	70	26.92%	95	38.78%
\$60,000 and over	110	42.31%	40	16.33%
Total number of families	260	100.00%	220	89.80%
Average family income	\$54,453		\$56,639	
Median family income	\$49,678		\$50,810	

Source: Statistics Canada 1996 & 2001 Census (numbers may not add up due to rounding)

<b>Household Income (Number of Households)</b>	<b>1996</b>	<b>%</b>	<b>2001</b>	<b>%</b>
less than \$19,999	85	21.52%	90	22.22%
\$20,000 - \$39,999	105	26.58%	95	23.46%
\$40,000 - \$59,999	105	26.58%	100	24.69%
\$60,000 and over	35	8.86%	115	28.40%
Total number of households	395	100.00%	405	100.00%
Average household income	\$44,509		\$47,489	
Median household income	\$41,029		\$44,926	

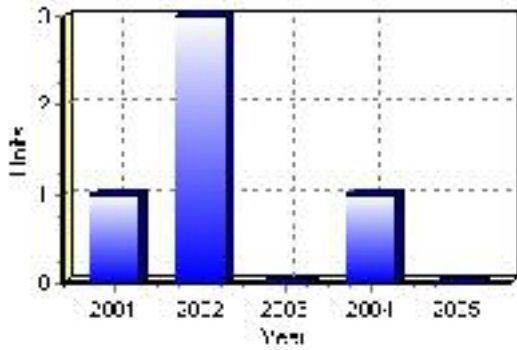
Source: Statistics Canada 1996 & 2001 Census (numbers may not add up due to rounding)

# Building Permits

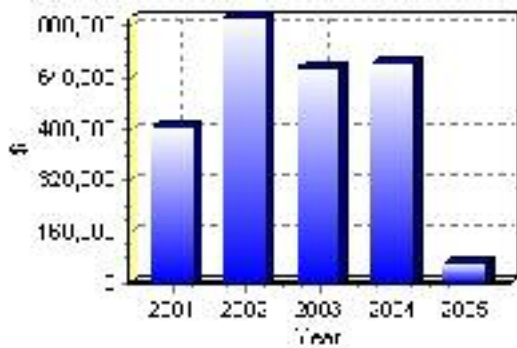
Total Building Permit Values	2001	2002	2003	2004	2005
Building Permits Value, Commercial	\$0	\$368,000	\$105,000	\$413,000	\$40,000
Building Permits Value, Industrial	\$0	\$127,000	\$71,000	\$0	\$0
Building Permits Value, Institutional	\$398,000	\$0	\$0	\$87,000	\$0
Building Permits Value, Residential	\$85,000	\$329,000	\$493,000	\$182,000	\$22,000
Building Permits Value, Total	\$483,000	\$824,000	\$669,000	\$682,000	\$62,000
Total Housing Starts	1	3	0	1	0

Source: Statistics Canada 2000-2004 Building Permits (numbers may not add up due to rounding)

## Total Housing Starts



## Value of Building Permits



## Dwellings

<b>Occupied Private Dwellings by Type</b>	<b>1996</b>	<b>% of total</b>	<b>2001</b>	<b>% of total</b>
Apartments	20	5.06%	20	4.94%
Detached Duplexes	0	0.00%	0	0.00%
Movable Dwellings	40	10.13%	0	0.00%
Other single attached house	0	0.00%	5	1.23%
Row and semi-detached house	10	2.53%	10	2.47%
Single-detached house	330	83.54%	370	91.36%
Total number of occupied private dwellings	395	100.00%	405	100.00%
Private dwellings, owned	285	72.15%	330	81.48%
Private Dwellings, rented	110	27.85%	80	19.75%

Source: Statistics Canada 1996 & 2001 Census (numbers may not add up due to rounding)

<b>Private Dwellings by Period of Construction</b>	<b># of Dwellings</b>	<b>% of total</b>
Period of construction, before 1946	40	10.00%
Period of construction, 1946 - 1960	65	16.25%
Period of construction, 1961 - 1970	60	15.00%
Period of construction, 1971 - 1980	120	30.00%
Period of construction, 1981 - 1990	55	13.75%
Period of construction, 1991 - 2001	60	15.00%
Total number of private dwellings constructed	400	100.00%

Source: Statistics Canada 2001 Census (numbers may not add up due to rounding)

Disclaimer: Information in this profile has been provided from a variety of external sources. Although every effort has been made to ensure the accuracy, currency and reliability of the content and data, AlbertaFirst.com Ltd. accepts no responsibility in this regard.

© AlbertaFirst.com Ltd., 2006.