

# Bon Accord

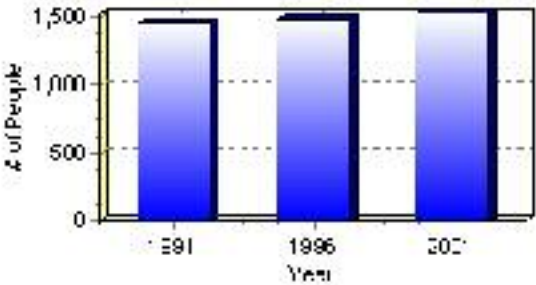
## Population

### Total Population

Population 2004*	1,532
Population 2003*	1,532
Population 2002*	1,532
Population 2001**	1,535
Population 2000*	1,493
Population 1996**	1,493
Population 1991**	1,460
Population % change 1991-1996	2.21%
Population % change 1996-2001	2.55%

\* Source: Official Population List, Alberta Municipal Affairs  
\*\* Source: Statistics Canada 1991, 1996, & 2001 Census

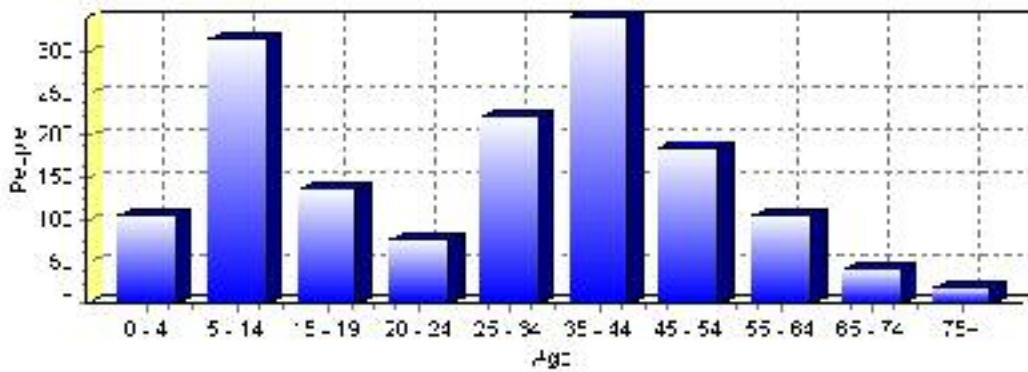
### Total Population 1991-2001



Population by Age and Gender	1996 Male	1996 Female	1996 Total	2001 Male	2001 Female	2001 Total
Age 0 - 4	55	75	130	65	40	105
Age 5 - 14	160	150	310	170	145	315
Age 15 - 19	65	75	140	80	55	135
Age 20 - 24	30	25	55	35	40	75
Age 25 - 34	110	130	240	100	120	220
Age 35 - 44	150	145	295	165	175	340
Age 45 - 54	90	85	175	95	90	185
Age 55 - 64	35	25	60	55	50	105
Age 65 - 74	25	30	55	20	20	40
Age 75 and older	5	20	25	5	15	20
Total All Persons	735	760	1,495	790	745	1,535

Source: Statistics Canada 1996 & 2001 Census (numbers may not add up due to rounding)

### Bon Accord Population by Age Group (2001)

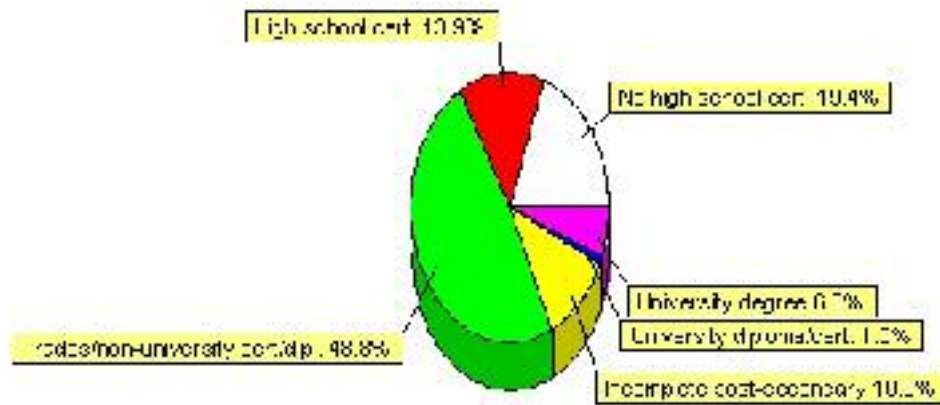


# Education Statistics

Highest level of schooling for Population 20yrs and older	2001	%
People without high school certificates	195	19.40%
People with high school certificates	140	13.93%
People with trades or non-university certificate or diploma	490	48.76%
People with post-secondary education (not completed)	110	10.95%
People with university diploma/certificate	10	1.00%
People with university degree	60	5.97%
Total Population 20 years and older	1,005	100.00%

Source: Statistics Canada 2001 Census (numbers may not add up due to rounding)

## Bon Accord Highest Level of Schooling 2001



Population with Post Secondary Qualifications	1996	%	2001	%
Agriculture and biological sciences	40	9.64%	30	5.31%
Commerce, management and business administration	80	19.28%	75	13.27%
Educational, recreational and counseling services	10	2.41%	30	5.31%
Engineering and applied science tech. and trades	165	39.76%	240	42.48%
Engineering and applied sciences	10	2.41%	0	0.00%
Fine and applied arts	20	4.82%	35	6.19%
Health professionals, science and technologies	60	14.46%	85	15.04%
Humanities and related fields	10	2.41%	25	4.42%
Mathematics and physical sciences	0	0.00%	10	1.77%
Social sciences and related fields	25	6.02%	50	8.85%
Other and/or no specialization	0	0.00%	0	0.00%
Total people with post secondary qualifications	415	100.00%	565	100.00%
Females with post-secondary qualifications	155	37.35%	265	46.90%
Males with post-secondary qualifications	260	62.65%	300	53.10%

Source: Statistics Canada 1996 & 2001 Census (numbers may not add up due to rounding)

## Labour Force

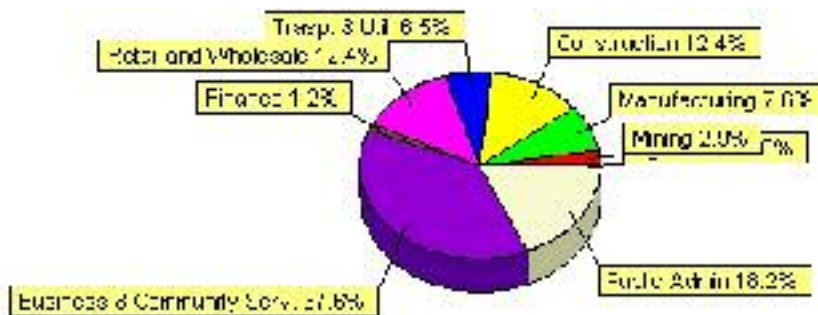
Labour force by activity	1996	2001
In the labour force, both sexes	680	845
Not in the labour force, both sexes	390	280
Total population 15 and over	1,065	1,130
Employed, both sexes	610	815
Unemployed, both sexes	60	30
Participation rate, both sexes	64.00%	75.00%
Unemployment rate, both sexes	9.00%	4.00%

Source: Statistics Canada 1996 & 2001 Census (numbers may not add up due to rounding)

Labour Force by Industry Division	1996	% of total	2001	% of total
Agriculture	10	1.52%	0	0.00%
Mining	30	4.55%	25	2.94%
Manufacturing	85	12.88%	65	7.65%
Construction	45	6.82%	105	12.35%
Transportation. & Utilities	60	9.09%	55	6.47%
Retail and Wholesale	85	12.88%	105	12.35%
Finance	30	4.55%	10	1.18%
Business & Community Services	270	40.91%	320	37.65%
Public Administration	110	16.67%	155	18.24%
Total All Industries	660	100.00%	850	100.00%

Source: Statistics Canada 1996 & 2001 Census (numbers may not add up due to rounding)

### Bon Accord Labour Force By Industry - 2001



Labour Force by Major Occupational Groups	1996	%	2001	%
Management occupations	35	5.34%	60	7.10%
Business, Finances and administrative occupations	135	20.61%	70	8.28%
Natural and applied sciences and related occupations	15	2.29%	95	11.24%
Health occupations	25	3.82%	75	8.88%
Occupations in social science; education; government and religion	25	3.82%	55	6.51%
Occupations in art; culture; recreation and sport	10	1.53%	20	2.37%

Sales and service occupations	175	26.72%	215	25.44%
Trades; transport; equipment operators and related occupations	135	20.61%	210	24.85%
Occupations unique to primary industry	25	3.82%	20	2.37%
Occupations unique to processing; manufacturing and utilities	75	11.45%	25	2.96%
Occupations not elsewhere classified	15	2.29%	0	0.00%
Total - All Occupations (major groups)	655	100.00%	845	100.00%
Females - All Occupations	270	41.22%	385	45.56%
Males - All Occupations	385	58.78%	460	54.44%

Source: Statistics Canada 1996 & 2001 Census (numbers may not add up due to rounding)

---

## Income

<b>Family Income (Number of Families)</b>	<b>1996</b>	<b>%</b>	<b>2001</b>	<b>%</b>
less than \$19,999	20	5.97%	30	8.00%
\$20,000 - \$39,999	75	22.39%	80	21.33%
\$40,000 - \$59,999	95	28.36%	110	29.33%
\$60,000 and over	145	43.28%	125	33.33%
Total number of families	335	100.00%	345	92.00%
Average family income	\$55,285		\$64,269	
Median family income	\$54,903		\$58,143	

Source: Statistics Canada 1996 & 2001 Census (numbers may not add up due to rounding)

<b>Household Income (Number of Households)</b>	<b>1996</b>	<b>%</b>	<b>2001</b>	<b>%</b>
less than \$19,999	65	13.68%	90	18.18%
\$20,000 - \$39,999	110	23.16%	90	18.18%
\$40,000 - \$59,999	135	28.42%	100	20.20%
\$60,000 and over	85	17.89%	230	46.46%
Total number of households	475	100.00%	495	100.00%
Average household income	\$50,207		\$60,583	
Median household income	\$46,329		\$55,239	

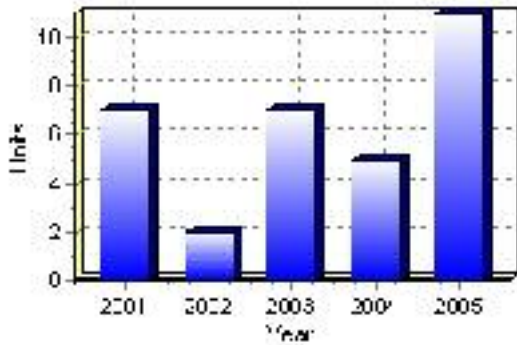
Source: Statistics Canada 1996 & 2001 Census (numbers may not add up due to rounding)

# Building Permits

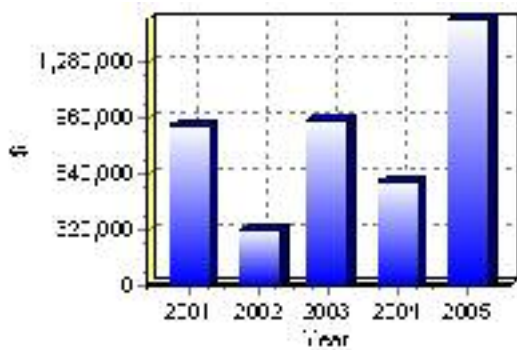
Total Building Permit Values	2001	2002	2003	2004	2005
Building Permits Value, Commercial	\$0	\$54,000	\$65,000	\$0	\$95,000
Building Permits Value, Industrial	\$0	\$0	\$30,000	\$0	\$0
Building Permits Value, Institutional	\$1,000	\$4,000	\$0	\$0	\$41,000
Building Permits Value, Residential	\$921,000	\$262,000	\$860,000	\$594,000	\$1,389,000
Building Permits Value, Total	\$922,000	\$320,000	\$955,000	\$594,000	\$1,525,000
Total Housing Starts	7	2	7	5	11

Source: Statistics Canada 2000-2004 Building Permits (numbers may not add up due to rounding)

## Total Housing Starts



## Value of Building Permits



## Dwellings

<b>Occupied Private Dwellings by Type</b>	<b>1996</b>	<b>% of total</b>	<b>2001</b>	<b>% of total</b>
Apartments	15	3.16%	10	2.00%
Detached Duplexes	0	0.00%	0	0.00%
Movable Dwellings	10	2.11%	0	0.00%
Other single attached house	0	0.00%	0	0.00%
Row and semi-detached house	50	10.53%	70	14.00%
Single-detached house	395	83.16%	425	85.00%
Total number of occupied private dwellings	475	100.00%	500	100.00%
Private dwellings, owned	430	90.53%	450	90.00%
Private Dwellings, rented	45	9.47%	45	9.00%

Source: Statistics Canada 1996 & 2001 Census (numbers may not add up due to rounding)

<b>Private Dwellings by Period of Construction</b>	<b># of Dwellings</b>	<b>% of total</b>
Period of construction, before 1946	30	6.00%
Period of construction, 1946 - 1960	15	3.00%
Period of construction, 1961 - 1970	40	8.00%
Period of construction, 1971 - 1980	310	62.00%
Period of construction, 1981 - 1990	70	14.00%
Period of construction, 1991 - 2001	35	7.00%
Total number of private dwellings constructed	500	100.00%

Source: Statistics Canada 2001 Census (numbers may not add up due to rounding)

Disclaimer: Information in this profile has been provided from a variety of external sources. Although every effort has been made to ensure the accuracy, currency and reliability of the content and data, AlbertaFirst.com Ltd. accepts no responsibility in this regard.

© AlbertaFirst.com Ltd., 2006.