

Andrew

Welcome

Welcome to the Village of Andrew. It is indeed a pleasure as the Mayor of Andrew to welcome visitors and newcomers to our beautiful village. By visiting our village, you will quickly realize that Andrew has a great deal to offer visitors, businesses and residents in the form of services, facilities and community-based activities.

Whether you are a prospective new resident contemplating a move into our village or are just visiting Andrew, you will be able to share in the enthusiasm of our residents for the town and surrounding area.

Activities range from viewing the world's largest Mallard Duck, the Canadian Pacific Railway Caboose, and the Andrew Historical Museum at the Rainbow Club facility, to participating in the many leisure and fitness facilities such as the Andrew Lions' Club Mini Golf, the tennis court, the playground, the baseball diamonds, and the bowling lanes, the sauna, the hot tub and the racquetball court in the Andrew Cultural Recreational Centre and Village Office. These facilities are a part of the complex housing the Andrew School, which is proud of its educational delivery through the use of the modern technology.

The Mayor, village councillors and administration are readily available to provide assistance by answering questions and providing information to visitors and new residents alike.

Area Overview

Settlement of the Andrew area was influenced by such historic events as the Palliser Expedition in 1858, the Northwest Rebellion in 1885 and the homestead immigrations starting in the 1890's. The first settlers in the area were Metis, followed by the Scots. In 1893 Andrew Whitford, after whom the Village was named, was given a Military Homestead. The wave of Ukrainian homesteaders started in 1897 and continued for many years. In 1930 the Village of Andrew was incorporated with Mr. T.J. Maticuk as its first Mayor.

Today, Andrew is a viable and vibrant community. It boasts of modern commercial and residential areas with all amenities, reflecting the slogan which appears on the Village crest, "Development for the Future".

Community Services

Municipal

Village of Andrew
5021 - 51 Street
P.O. Box 180
Andrew, Alberta
T0B 0C0
Tel: 780-365-3687
Fax: 780-365-2061

- Water Treatment Plant
- Municipal Library

Provincial

N/A

Federal

- Canada Post
- Royal Canadian Mounted Police

Community Lifestyle

Recreation

Local recreational facilities include a Recreation/Fitness Centre [bowling alley, sauna, hot tub, fitness room with equipment], tennis court, mini-golf, Arena [hockey, figure skating, curling], 2 playgrounds, the Andrew Community Centre Association, bingo, and a Public Library.

Community Organizations

Community organizations include the Agricultural Society, Lions/Lionesses, Andrew & District Historical Archives Museum Society, Andrew Library Board, Eagle Hill Amateur Radio Club, Project Second Life, Andrew Community Centre Association, Mini Golf Club, Women's Guild Club, Ukrainian Ladies' Aid, Zoria Ukrainian Dance Club, Rainbow Club [centre for senior citizens], ball and hockey teams, figure skating and curling club.

Religious Services

- Andrew Full Gospel
- Bissel Memorial United
- Kingdom Hall of Jehovah Witnesses
- Russo Greek Orthodox of St. Peter & St. Paul
- United Church Women

Special Attractions/Annual Events

- World's Largest Mallard
- Caboose and Way Station
- Andrew Museum (located in CP Station)
- Mini Golf
- RV Park and Campsite
- Andrew Elevator and Interpretative Centre
- Duck Stop Recreation and Fitness Centre

- Lion's Club Bingo - every Monday
- Andrew Agricultural Society Farmers Market - every Saturday
- Annual Garlic Festival - October 20th, 2001
- Remembrance Day Program & Activities November 11th
- Firefighter's Ball -
- Andrew Country Christmas Craft Sale - Andrew Community Centre.
- Community Wide Garage Sale - 1st Saturday in May
- Andrew Community Christmas Party -
- Mother's Day Tea and Bake Sale - Andrew School- 2nd Friday in May

- Sport-off Parade and Activities -- July 1

Hospitality

Accommodation

- Andrew Hotel

Restaurants

- Hong Kong Restaurant
- Jade Garden Restaurant

Economic Base

The economic base of the Andrew area is mixed farming and natural gas. Products made in the area include sand/gravel, natural gas, cereal crops, hogs, and poultry.

Education

Andrew is part of the Elk Island Public School Regional Division #14, headquartered in Sherwood Park [Tel: 780-464-8200].Word.

Daycare/Nursery

N/A

Public

Andrew School provides education for Grades K to 12. The school provides distance education for students who wish to take high school courses that are not offered at the high school.

The school hosts annual events that include the Christmas concert, Track and Field day, Science Fair, Graduation Exercises, Winter Olympics, a Home Economics Fashion Show, and numerous field trips.

Separate

N/A

Private

N/A

Emergency Services

Fire Protection

Andrew is served by the Andrew Volunteer Fire Department [Tel: 780-365-3611].

Police Services

Andrew is served by the Two Hills RCMP Detachment - Andrew Satellite Office [Tel: 780-365-3533].

Ambulance Services

There is a Lakeland Ambulance with a base station in Andrew [Tel: 780-365-3600].

Health Care

Archer Memorial Hospital, located in Lamont, has 72 active beds, while the Auxiliary Hospital and Nursing Home has 81 beds. In addition, George McDougall Memorial and Auxiliary Hospital, located in Smoky Lake, has 10 acute care beds, 24-hour emergency services, laboratory and diagnostic imaging, and a full range of community-based services. There is also a health centre and a health unit located in Mundare and Willingdon respectively.

Other local medical services include a physical therapist, and the Vegreville Health Unit.

Key Contacts for Business Development

Municipal

Village of Andrew
5021 - 50 Street
P.O. Box 180
Andrew, Alberta
T0B 0C0
Tel: 780-365-3687
Fax: 780-365-2061

Jerry Kupina
Mayor

Pat Skoreyko
Chief Administrative Officer
vandway@telus.net

Provincial (Updated December 2004)

[Alberta Economic Development](#)
Box 412
Room 308, Provincial Building
5025 - 49 Avenue
St. Paul, Alberta
T0A 3A4
Tel: 780-645-6358
Fax: 780-645-6241
[Garry Krause](#), Regional Manager
[Maryann Robinson](#), Client Service Representative

Ed Stelmach
Member of the Legislative Assembly
Vegreville - Viking Constituency
607 Legislature Annex
9718 107 Street
Edmonton AB
T5K 1E4
Tel: 780-422-5384
Fax: 780-415-0951

Constituency Office:
Box 451, 4945 - 51 Avenue
Vegreville, AB T9C 1R6
Phone: (780) 632-6840
Fax: (780) 632-6888
Vegreville.Viking@assembly.ab.ca

Federal (Updated June 2004)

Leon Benoit
Member of Parliament [MP]
Vegreville-Wainwright Constituency
House of Commons
Suite 613, Justice Building
Ottawa, Ontario
K1A 0A6
Tel: 613-992-4171

Constituency Office:
P.O. Box 300
Mannville, Alberta
T0B 2W0
Tel: 780-763-6130
Toll-Free in AB: 1-800-463-1194
Fax: 780-763-6132

Location

The Village of Andrew is located in the County of Lamont #30, on Highway 45 in east-central Alberta. It is 60 km northeast of Fort Saskatchewan and 105 km northeast of Edmonton.

Post Secondary Education

Residents of Andrew have access to Athabasca University distance education programs, as well as Edmonton-based post-secondary institutions such as The University of Alberta, Grant MacEwan College and Northern Alberta Institute of Technology [NAIT].

Taxation

	<u>Residential/Farmland</u>	<u>Non-Residential</u>
2005		
Municipal Tax Rate	20.4330	21.4300
Education - Alberta School Foundation Fund Tax Rate	4.4160	6.5480
Seniors Lodge Accommodation Tax Rate	.4149	.4149

Mill Rates [1999]

- Residential - Public 27.50
- Residential - Separate N/A
- Non-Residential - Public 31.458

- Non-Residential - Separate N/A

Transportation

Air Services

There is an unlighted, grass air strip in Andrew. The nearest commercial and air freight services are at Edmonton International and Edmonton Municipal Airports.

Rail Services

Andrew is served by the Canadian Pacific Railway [Lloydminster to Edmonton].

Highways

Connecting highways are Highway 45 [Aurora Way], leading west to Fort Saskatchewan via Highway 15 and east to Highway 41, and Secondary Highway 855, leading south to Highway 16 [Yellowhead Highway].

Trucking Firms

- ASL Carriers
- Shulko & Sons

Bus Services

Quality Tours runs a service Monday to Friday to and from Edmonton.

Couriers and Taxis

Loomis Courier, Purolator Courier

Utilities

Electrical Power

ATCO Electric
6502 - 55 Avenue
Vegreville, Alberta
T0B 4L0
Tel: 780-632-2844

Natural Gas

ATCO Gas
10035-105 Street
Edmonton, Alberta
T5J 2B6
Tel: 1-888-511-7550

Telephone

Telus
P.O. Box 2525 Stn M
Calgary, AB
T2P 5A5

Tel: 1-800-361-3311

Water Supply

Andrew receives its treated water supply from the City of Edmonton Rosedale Water Treatment Plant. The reservoir capacity is 143,000 gallons [650 cubic metres] and the line pressure is 30-40 lbs. Consumption is approximately 40,000 gallons per day [180 cubic metres].

Waste Management

Sewage treatment is provided by a series of lagoons consisting of 4 short and 2 long detention ponds.

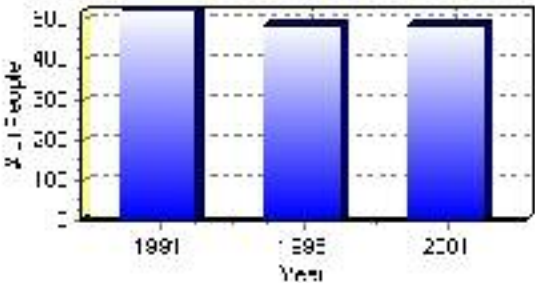
Population

Total Population

Population 2004*	485
Population 2003*	485
Population 2002*	485
Population 2001**	485
Population 2000*	484
Population 1996**	484
Population 1991**	520
Population % change 1991-1996	-7.44%
Population % change 1996-2001	0.21%

* Source: Official Population List, Alberta Municipal Affairs
** Source: Statistics Canada 1991, 1996, & 2001 Census

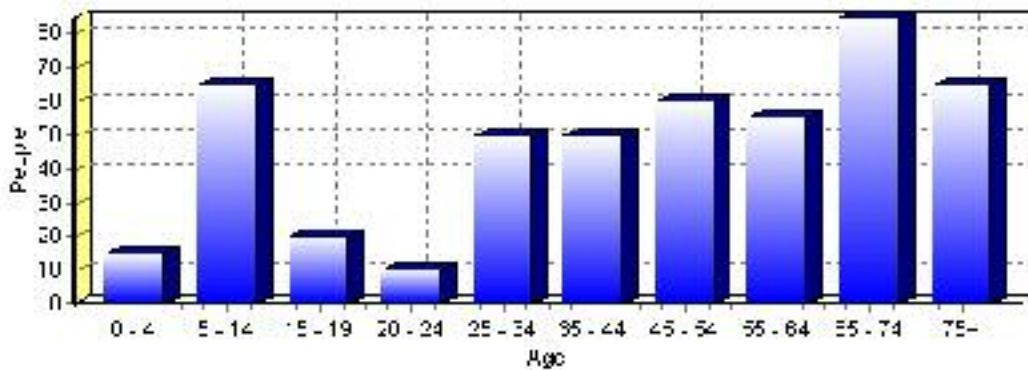
Total Population 1991-2001



Population by Age and Gender	1996 Male	1996 Female	1996 Total	2001 Male	2001 Female	2001 Total
Age 0 - 4	10	10	20	5	10	15
Age 5 - 14	20	25	45	30	35	65
Age 15 - 19	10	10	20	15	5	20
Age 20 - 24	10	10	20	5	5	10
Age 25 - 34	30	25	55	30	20	50
Age 35 - 44	25	20	45	25	25	50
Age 45 - 54	25	15	40	30	30	60
Age 55 - 64	30	35	65	30	25	55
Age 65 - 74	40	35	75	45	40	85
Age 75 and older	40	50	90	30	35	65
Total All Persons	240	245	485	255	235	490

Source: Statistics Canada 1996 & 2001 Census (numbers may not add up due to rounding)

Andrew Population by Age Group (2001)

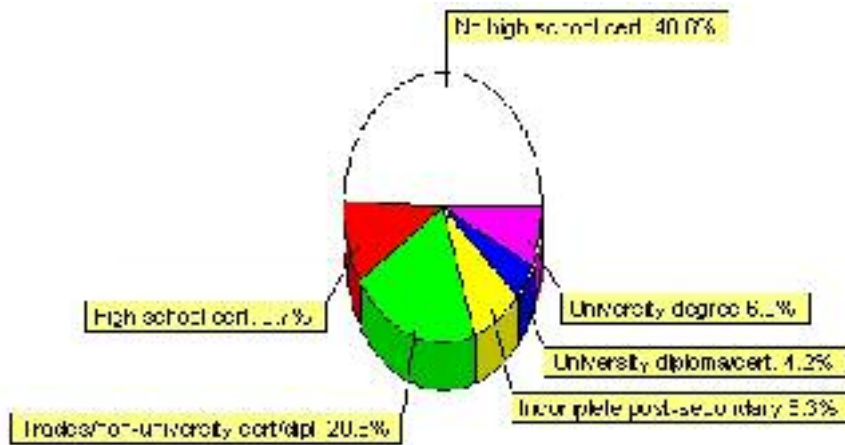


Education Statistics

Highest level of schooling for Population 20yrs and older	2001	%
People without high school certificates	175	48.61%
People with high school certificates	35	9.72%
People with trades or non-university certificate or diploma	75	20.83%
People with post-secondary education (not completed)	30	8.33%
People with university diploma/certificate	15	4.17%
People with university degree	25	6.94%
Total Population 20 years and older	360	100.00%

Source: Statistics Canada 2001 Census (numbers may not add up due to rounding)

Andrew Highest Level of Schooling 2001



Population with Post Secondary Qualifications	1996	%	2001	%
Agriculture and biological sciences	0	0.00%	0	0.00%
Commerce, management and business administration	25	27.78%	20	18.18%
Educational, recreational and counseling services	0	0.00%	10	9.09%
Engineering and applied science tech. and trades	50	55.56%	50	45.45%
Engineering and applied sciences	0	0.00%	0	0.00%
Fine and applied arts	0	0.00%	10	9.09%
Health professionals, science and technologies	10	11.11%	10	9.09%
Humanities and related fields	0	0.00%	0	0.00%
Mathematics and physical sciences	0	0.00%	0	0.00%
Social sciences and related fields	10	11.11%	10	9.09%
Other and/or no specialization	0	0.00%	15	13.64%
Total people with post secondary qualifications	90	100.00%	110	100.00%
Females with post-secondary qualifications	30	33.33%	55	50.00%
Males with post-secondary qualifications	60	66.67%	55	50.00%

Source: Statistics Canada 1996 & 2001 Census (numbers may not add up due to rounding)

Labour Force

Labour force by activity	1996	2001
In the labour force, both sexes	220	170
Not in the labour force, both sexes	165	205
Total population 15 and over	385	375
Employed, both sexes	165	165
Unemployed, both sexes	60	0
Participation rate, both sexes	57.00%	45.00%
Unemployment rate, both sexes	27.00%	0.00%

Source: Statistics Canada 1996 & 2001 Census (numbers may not add up due to rounding)

Labour Force by Industry Division	1996	% of total	2001	% of total
Agriculture	45	20.00%	20	11.76%
Mining	10	4.44%	0	0.00%
Manufacturing	20	8.89%	30	17.65%
Construction	40	17.78%	20	11.76%
Transportation. & Utilities	10	4.44%	10	5.88%
Retail and Wholesale	25	11.11%	20	11.76%
Finance	10	4.44%	0	0.00%
Business & Community Services	60	26.67%	70	41.18%
Public Administration	30	13.33%	10	5.88%
Total All Industries	225	100.00%	170	100.00%

Source: Statistics Canada 1996 & 2001 Census (numbers may not add up due to rounding)

Andrew Labour Force By Industry - 2001



Labour Force by Major Occupational Groups	1996	%	2001	%
Management occupations	10	4.44%	10	5.88%
Business, Finances and administrative occupations	35	15.56%	30	17.65%
Natural and applied sciences and related occupations	0	0.00%	0	0.00%
Health occupations	0	0.00%	0	0.00%
Occupations in social science; education; government and religion	0	0.00%	15	8.82%
Occupations in art; culture; recreation and sport	0	0.00%	0	0.00%

Sales and service occupations	65	28.89%	25	14.71%
Trades; transport; equipment operators and related occupations	70	31.11%	55	32.35%
Occupations unique to primary industry	40	17.78%	25	14.71%
Occupations unique to processing; manufacturing and utilities	10	4.44%	15	8.82%
Occupations not elsewhere classified	0	0.00%	0	0.00%
Total - All Occupations (major groups)	225	100.00%	170	100.00%
Females - All Occupations	95	42.22%	75	44.12%
Males - All Occupations	130	57.78%	100	58.82%

Source: Statistics Canada 1996 & 2001 Census (numbers may not add up due to rounding)

Income

Family Income (Number of Families)	1996	%	2001	%
less than \$19,999	10	8.70%	25	21.74%
\$20,000 - \$39,999	60	52.17%	50	43.48%
\$40,000 - \$59,999	35	30.43%	0	0.00%
\$60,000 and over	10	8.70%	35	30.43%
Total number of families	115	100.00%	110	95.65%
Average family income	\$32,670		\$57,318	
Median family income	\$30,153		\$34,797	

Source: Statistics Canada 1996 & 2001 Census (numbers may not add up due to rounding)

Household Income (Number of Households)	1996	%	2001	%
less than \$19,999	115	50.00%	85	38.64%
\$20,000 - \$39,999	60	26.09%	75	34.09%
\$40,000 - \$59,999	40	17.39%	0	0.00%
\$60,000 and over	15	6.52%	60	27.27%
Total number of households	230	100.00%	220	100.00%
Average household income	\$24,503		\$45,434	
Median household income	\$20,498		\$27,092	

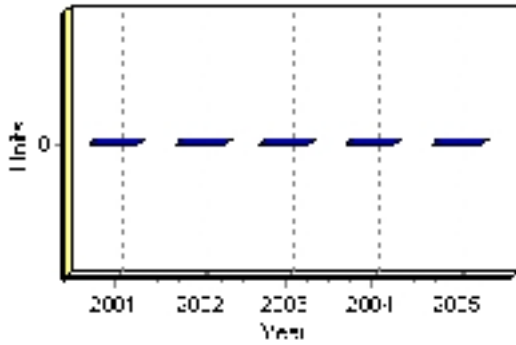
Source: Statistics Canada 1996 & 2001 Census (numbers may not add up due to rounding)

Building Permits

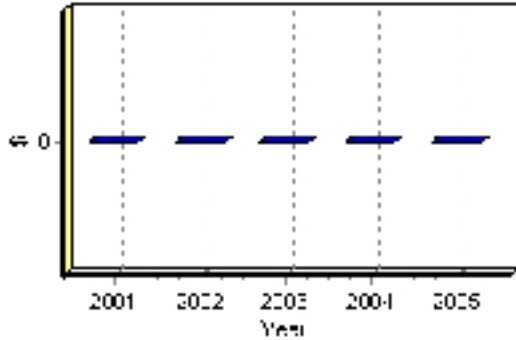
Total Building Permit Values	2001	2002	2003	2004	2005
Building Permits Value, Commercial	\$0	\$0	\$0	\$0	\$0
Building Permits Value, Industrial	\$0	\$0	\$0	\$0	\$0
Building Permits Value, Institutional	\$0	\$0	\$0	\$0	\$0
Building Permits Value, Residential	\$0	\$0	\$0	\$0	\$0
Building Permits Value, Total	\$0	\$0	\$0	\$0	\$0
Total Housing Starts	0	0	0	0	0

Source: Statistics Canada 2000-2004 Building Permits (numbers may not add up due to rounding)

Total Housing Starts



Value of Building Permits



Dwellings

Occupied Private Dwellings by Type	1996	% of total	2001	% of total
Apartments	0	0.00%	0	0.00%
Detached Duplexes	0	0.00%	0	0.00%
Movable Dwellings	15	6.52%	0	0.00%
Other single attached house	10	4.35%	0	0.00%
Row and semi-detached house	15	6.52%	10	4.55%
Single-detached house	195	84.78%	205	93.18%
Total number of occupied private dwellings	230	100.00%	220	100.00%
Private dwellings, owned	210	91.30%	195	88.64%
Private Dwellings, rented	20	8.70%	25	11.36%

Source: Statistics Canada 1996 & 2001 Census (numbers may not add up due to rounding)

Private Dwellings by Period of Construction	# of Dwellings	% of total
Period of construction, before 1946	55	25.00%
Period of construction, 1946 - 1960	50	22.73%
Period of construction, 1961 - 1970	15	6.82%
Period of construction, 1971 - 1980	75	34.09%
Period of construction, 1981 - 1990	0	0.00%
Period of construction, 1991 - 2001	25	11.36%
Total number of private dwellings constructed	220	100.00%

Source: Statistics Canada 2001 Census (numbers may not add up due to rounding)

Disclaimer: Information in this profile has been provided from a variety of external sources. Although every effort has been made to ensure the accuracy, currency and reliability of the content and data, AlbertaFirst.com Ltd. accepts no responsibility in this regard.

© AlbertaFirst.com Ltd., 2006.