

Lamont County

www.countylamont.ab.ca

Welcome

Bitaiemo. Welcome to Lamont County.

The Lamont County Region offers a quality of life second to none and has something for everyone. Our County is a vibrant and vital community that offers visitors and new residents an unforgettable experience. As the centre of a vast agriculture and oil and gas producing region we are prospering and growing. We're proud of our community and welcome you to share it with us, either as an investor or a new citizen. We invite you to come and explore the opportunities that await you.

Wayne Woldanski
Reeve
Lamont County

Area Overview

Lamont County is located in east central Alberta, 62km (40m) north east of Edmonton. Travel from Edmonton eastward along Highway 15 or 16 until you reach a sign announcing Lamont County. You will then be within a rich agricultural district that encompasses approximately 27 townships and contains a population of 4,212 plus 4,071 in the included towns and villages. The County, which is nestled in the Beaver Hills, is part of the Kalyna County Ecomuseum, a heritage district in East Central Alberta and is also proud to share a border with Elk Island National Park.

Today the County and the progress it has made over the years is a tribute to the hardy pioneers who settled and made this area their home. It is a symbol of a region where people of varying nationalities and religious convictions have been able to cooperate to forge prosperous and progressive communities.

Communities within the County include the Town of Lamont, the Town of Bruderheim, the Town of Mundare, the Village of Andrew and the Village of Chipman.

Climate

Lamont County average temperatures are

Summer: + 15

Winter: - 10

Community Services

Organizations and clubs include Lions Clubs, Agricultural Societies, a Masonic Lodge, as well as recreational and cultural organizations.

Community Lifestyle

Lamont County is nestled in the Beaver Hills and is proud to boast attractions such as Elk Island National Park, the Ukrainian Cultural Heritage Village, the Basilian Fathers Museum in Mundare and many interesting craft shops, churches and beautiful scenery. In fact, the County has declared itself as the "Church Capital of North America" and has produced a booklet containing four different driving tours of our 47 churches. At the Parkland Conservation Farm south of the Town of Mundare on Highway 16 visitors

can walk the through the natural area or visit the main office to learn about modern agricultural conservation practices.

Recreational facilities and activities include hockey arenas, curling rinks, a nine hole golf course at Elk Island National park (5km south of Lamont), ball diamonds, tennis courts and a trout fishing pond.

For more information on County attractions contact us at (780) 895-2233, e-mail info@tclamont.ca, or visit our website at www.countylamont.ab.ca.

Economic Base

Lamont County's economic strength is based on its diversification in three major sectors: Agriculture, Industrial Development and Tourism.

The County is actively encouraging increased activity in the Industrial Development Area. Existing industrial strengths include Canexus and Erco Worldwide both of which are producers of sodium chlorate, which is sold primarily to the pulp and paper industry, and Triton Fabrication Inc., a steel fabrication company for the oilsands industry. Pioneer Grain and Agricore have completed construction of top-of-the-line grain handling facilities. Other industries in the County include Sil Industrial Minerals, Top Yield Fertilizers and many other businesses related to the agricultural service and supply industry. The County is also home to extensive gas and oil well activity. Alliance Pipelines completed construction of a major gas pipeline through the County in 2000; Nova Gas, Pembina (ASOPL) and Bison Pipelines are planned to traverse the County in the near future.

Major Industries in Region:

- Dow, Sherritt, Agrium, ATCO, Westaim, BP Energy – City of Fort Saskatchewan
- Dow, Shell, Imperial Oil, Petro-Canada, Enbridge Pipelines – Strathcona County
- Agrium, Degussa, Guardian Chemicals, Williams Energy – Sturgeon County
- Celanese, Alcan, ATCO, EPCOR, AltaSteel, AT Plastics – City of Edmonton
- ATCO Electric, Nova, provincial government departments – Town of Vegreville

Alberta's Industrial Heartland: The County joined with three neighbouring jurisdictions, Strathcona County, Sturgeon County and the City of Fort Saskatchewan, in a partnership known as Alberta's Industrial Heartland. This is a group committed to providing the right climate and conditions for healthy and environmentally friendly world-class economic and industrial development. The partnership will ensure local industrial growth in a consistent, coordinated way that will ensure productive, safe and environmentally sound development of the area over the next 20 to 50 years. Designated for long-term heavy and medium industrial growth, and already home to over 20 world-class companies, the Heartland has the infrastructure and the support of all its bordering communities and can therefore provide companies with a productive environment in which they can grow and succeed.

Lamont County, as a full partner in this alliance, has designated four sections of land for Industrial/Commercial development:

- Sections 25, 26, 34 & 35-55-20-W4

This land is located in a prime spot, just off Highway 15 and southeast of the Town of Bruderheim, approximately 35 km northeast of the City of Fort Saskatchewan. The Vegreville Water Corridor line runs to this location, parallel with Highway 15, to serve the existing Nexen and Erco Worldwide Plants, and both CP and CNR tracks run through the sections.

A number of potential sites also exist along TransCanada Highway 16 (Yellowhead, 4 lanes).

A secondary water line runs from Highway 15, at Hilliard, providing water service to the Village of Andrew.

Labour markets exist within current commuter communities, such as:

- Lamont County residents, plus towns and villages of Bruderheim, Chipman, Lamont, Mundare, Andrew (total population 8,446)
- Strathcona County and City of Fort Saskatchewan
- Minburn County and Town of Vegreville
- Beaver County and Towns of Tofield and Ryley

- City of Edmonton (32-48 km radius), 900,000 people
- Over one million people within 32-56 km (20-35 mile) radius

Labour:

- costs are competitive:
- Provincial minimum of \$7.00/hr
- skilled and semi-skilled labour force available

Market Area: The towns of Bruderheim, Lamont and Mundare and Villages of Andrew and Chipman serve as the market centers for both urban and rural residents.

Median Family Income: \$40,894 (County)

Business:

- 65 heavy, light and commercial
- 70 licensed home-based

Education

Lamont County's schools are administered by the Elk Island Regional School Division No. 14. Kindergarten to grade 12 programs are offered at schools in Andrew and Lamont; kindergarten to grade 6 programs are offered at schools in Bruderheim and Mundare. Each school also offers a wide variety of distance learning programs, extra curricular activities, sports and second language programs. The school in the Village of Andrew, completed in 1992 and planned as a joint use facility, was the first of its kind in the province to combine the school with the village office. The facility, which includes a library, bowling alley, exercise/weight room, sauna, whirlpool and change room facilities, has worked to the benefit of both students and residents and provides a modern environment, conducive to active learning.

Emergency Services

Emergencies:

Lamont County is within the E 9-1-1 call area

Fire Protection

Lamont County is fortunate to be served by five fire departments, located in the Villages of Andrew and Chipman and Towns of Bruderheim, Lamont and Mundare. Each fire department is manned by volunteers; their high level of commitment ensures competent training at all levels.

Lamont County has mutual aid agreements with all surrounding jurisdictions.

Police Services:

Lamont County is covered by four R.C.M.P Detachments:

- Fort Saskatchewan covers the western portion
- Two Hills/Andrew covers a large north-eastern portion
- Vegreville covers the south-eastern portion
- Tofield covers a small area in the south-west corner of the County
- A detachment office is located in the Village of Andrew.

Ambulance Services

With the exception of the Town of Mundare, the entire county is served by Medicare Ambulance Services Inc. at Redwater. Medicare has an ambulance station in the Town of Lamont and Village of Andrew, and provides full time ALS coverage.

Health Care

Lamont County falls within the East Central Health Region boundaries. There is an active acute care hospital in the Town of Lamont and a Health Care Centre in Mundare. Seniors facilities and assisted living units are located in the towns and villages.

Key Contacts for Business Development

The main business contacts for Lamont County are:

Wayne Woldanski
Reeve
council@tclamont.ca

Al Harvey
County Manager
info@tclamont.ca

e-mail for County is info@tclamont.ca

Lamont-Two Hills Business Development Corporation
Box 547, Two Hills, Alberta T0B 4K0
Phone: 780-657-3512
Fax: 780-657-2359
Bernice Sambor, Manager
website: www.centraleastalberta.com

Provincial (Updated December 2004)

Alberta Economic Development
Box 412
Room 308, Provincial Building
5025 - 49 Avenue
St. Paul, Alberta
T0A 3A4
Tel: 780-645-6358
Fax: 780-645-6241
Garry Krause, Regional Manager
Maryann Robinson, Client Service Representative

Ed Stelmach, The Hon.,
Minister of International and Intergovernmental Relations
Member of the Legislative Assembly
Vegreville - Viking Constituency

Constituency Office
Box 451, 4945 - 51 Avenue
Vegreville, AB T9C 1R6
Phone: (780) 632-6840
Fax: (780) 632-6888
Vegreville.Viking@assembly.ab.ca

Legislature Office
Minister of International and Intergovernmental Relations

320 Legislature Bldg 10800 - 97 Avenue
Edmonton, AB T5K 2B6
Phone: (780) 415-9390
Fax: (780) 415-9412

Federal (Updated June 2004)

Leon Benoit
Member of Parliament (MP)
Vegreville-Wainwright Constituency
House of Commons
Suite 613, Justice Building
Ottawa ON K1A 0A6
Tel: 613-992-4171

Constituency Office:
P.O. Box 300
Mannville AB T0B 2W0
Tel: 780-763-6130
Toll-Free in AB: 1-800-463-1194
Fax: 780-763-6132

Location

Lamont County is located in East Central Alberta, 62km (40m) northeast of Edmonton. The County is bordered by the North Saskatchewan River and County of Smoky Lake to the north and northeast, County of Thorhild to the northwest, County of Minburn and County of Two Hills to the East, County of Beaver to the South and Elk Island National Park and Strathcona County to the West.

Post Secondary Education

An active Community Adult Learning Council offers a wide variety of programs and courses designed to offer appeal to all ages and appetites. Current CALC programs can be viewed on the County's website at www.countylamont.ab.ca.

A CAP computer is available in the County Office for public use during County Office hours. CAP (Community Access Site) is computers with internet access for public use.

Taxation

The 2004 mill rates for Lamont County are as follows:

- Farmland: 13.1831
- Residential: 13.1831
- Commercial: 23.7551
- Electric Power and Pipeline: 23.7551
- M & E: 16.6331
- School Taxes under Farmland and Residential: 5.505
- School Taxes Commercial: 7.980
- School Taxes
- Electric Power and Pipeline: 7.980

- Seniors Lodges for all categories: 0.423

Total Taxes

- Farmland: 16.228
- Residential: 16.228
- Commercial: 22.628
- Electricity and Pipeline: 22.628
- M & E: 14.648

	<u>Residential/Farmland</u>	<u>Non-Residential</u>
2004		
Municipal Tax Rate	7.9000	16.1670
Education - Alberta School Foundation Fund Tax Rate	4.8170	7.1220
Seniors Lodge Accommodation Tax Rate	.4661	.4661

Transportation

Road Transportation:

Lamont County is well served with a network of quality transportation systems. Highways 16 (the Yellowhead Highway), 15 and 45 traverse the County for a total of 92 miles, providing fast and excellent routes to various destinations. Lamont County was the first in the province of Alberta to have all its 101 miles of secondary highways paved. A High Load Corridor extends from Highway 834, starting on the County’s south boundary, north to Highway 15, west to the junction with Highway 637, east along Highway 637 and north on Highway 831 to the North Saskatchewan River. There are no Road Axle Weight Restrictions on Highways; restrictions are generally in effect on County roads during the spring soft weather conditions and are posted on the County’s web site.

Rail Transportation:

The Canadian National line runs parallel with Highway 15. The Canadian Pacific line runs from the Town of Bruderheim in a northeasterly direction to the Village of Andrew and thereafter runs east and southeast, parallel with Highway 45. Both lines intersect in an industrial area near the Town of Bruderheim. The nearest intermodal yard is located in the City of Edmonton.

Road Maintenance:

The provincial government contracts out maintenance of primary and secondary highways. Local roads are maintained by the County. Additional maintenance of local access roads will be provided in negotiation with local government, as need necessitates.

Utilities

Electrical Power:

ATCO Electric and Epcor serve the region. Three-phase power is concentrated in the Bruderheim area to serve existing industrial plants, 2.5 km north of Primary Highway 15.

Natural Gas:

ATCO Gas serves the Hamlet of Hilliard. Lamco Gas serves other rural areas in the County. The Lamco Gas office is located off Highway 15, just outside the Town of Lamont - 24 hour number is (780) 895-2244.

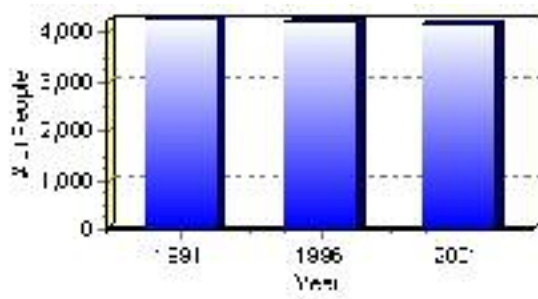
Population

Total Population

Population 2004*	4,167
Population 2003*	4,167
Population 2002*	4,167
Population 2001**	4,165
Population 2000*	4,212
Population 1996**	4,212
Population 1991**	4,266
Population % change 1991-1996	-1.28%
Population % change 1996-2001	-1.08%

* Source: Official Population List, Alberta Municipal Affairs
** Source: Statistics Canada 1991, 1996, & 2001 Census

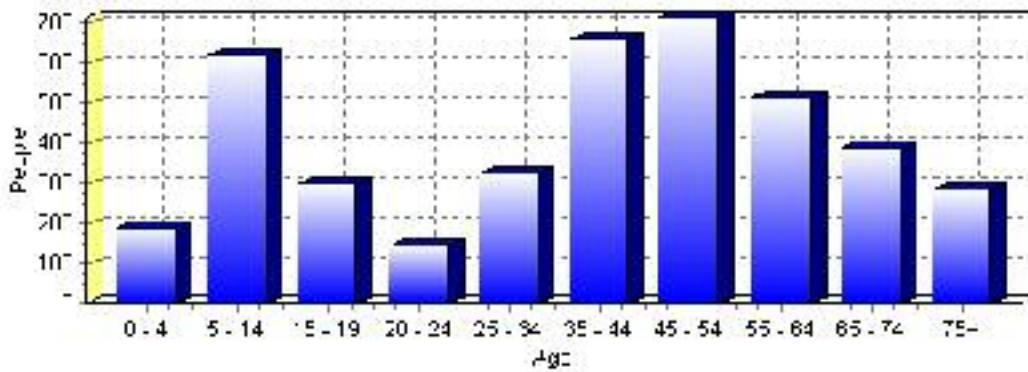
Total Population 1991-2001



Population by Age and Gender	1996 Male	1996 Female	1996 Total	2001 Male	2001 Female	2001 Total
Age 0 - 4	120	125	245	90	100	190
Age 5 - 14	320	300	620	310	310	620
Age 15 - 19	165	150	315	160	140	300
Age 20 - 24	90	60	150	85	60	145
Age 25 - 34	240	210	450	130	195	325
Age 35 - 44	365	330	695	365	295	660
Age 45 - 54	315	295	610	360	355	715
Age 55 - 64	275	235	510	280	235	515
Age 65 - 74	220	155	375	220	170	390
Age 75 and older	120	130	250	145	140	285
Total All Persons	2,220	1,995	4,215	2,165	2,005	4,170

Source: Statistics Canada 1996 & 2001 Census (numbers may not add up due to rounding)

Lamont County Population by Age Group (2001)

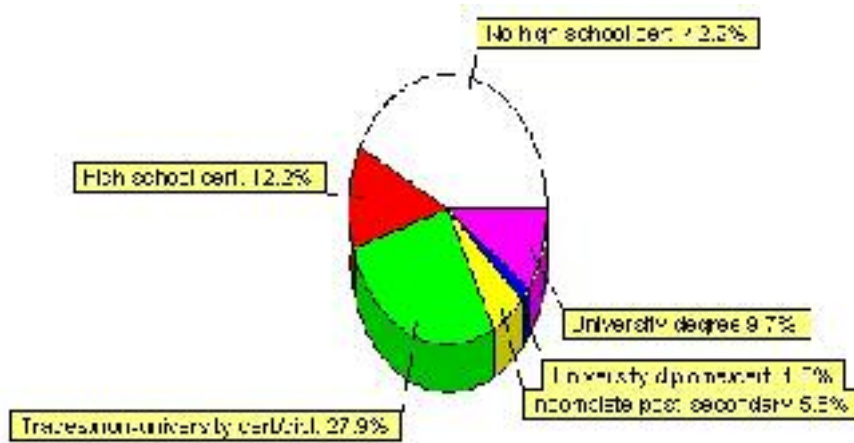


Education Statistics

Highest level of schooling for Population 20yrs and older	2001	%
People without high school certificates	1,280	42.24%
People with high school certificates	370	12.21%
People with trades or non-university certificate or diploma	845	27.89%
People with post-secondary education (not completed)	175	5.78%
People with university diploma/certificate	55	1.82%
People with university degree	295	9.74%
Total Population 20 years and older	3,030	100.00%

Source: Statistics Canada 2001 Census (numbers may not add up due to rounding)

Lamont County Highest Level of Schooling 2001



Population with Post Secondary Qualifications	1996	%	2001	%
Agriculture and biological sciences	75	6.70%	110	8.98%
Commerce, management and business administration	215	19.20%	190	15.51%
Educational, recreational and counseling services	100	8.93%	130	10.61%
Engineering and applied science tech. and trades	470	41.96%	420	34.29%
Engineering and applied sciences	0	0.00%	25	2.04%
Fine and applied arts	15	1.34%	45	3.67%
Health professionals, science and technologies	145	12.95%	115	9.39%
Humanities and related fields	20	1.79%	25	2.04%
Mathematics and physical sciences	35	3.13%	50	4.08%
Social sciences and related fields	35	3.13%	110	8.98%
Other and/or no specialization	0	0.00%	0	0.00%
Total people with post secondary qualifications	1,120	100.00%	1,225	100.00%
Females with post-secondary qualifications	520	46.43%	550	44.90%
Males with post-secondary qualifications	600	53.57%	675	55.10%

Source: Statistics Canada 1996 & 2001 Census (numbers may not add up due to rounding)

Labour Force

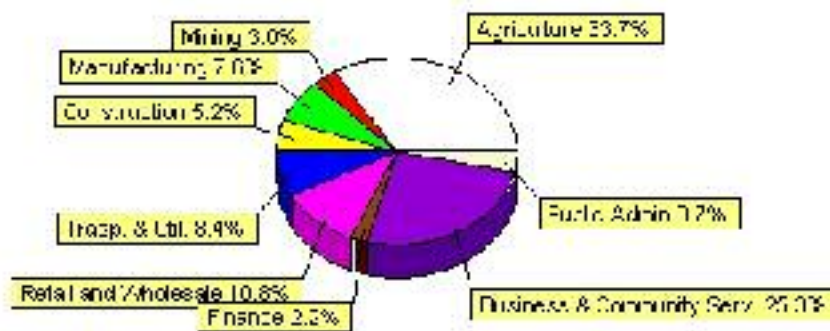
Labour force by activity	1996	2001
In the labour force, both sexes	2,520	2,320
Not in the labour force, both sexes	815	980
Total population 15 and over	3,340	3,295
Employed, both sexes	2,465	2,245
Unemployed, both sexes	55	70
Participation rate, both sexes	75.00%	70.00%
Unemployment rate, both sexes	2.00%	3.00%

Source: Statistics Canada 1996 & 2001 Census (numbers may not add up due to rounding)

Labour Force by Industry Division	1996	% of total	2001	% of total
Agriculture	910	36.33%	780	33.69%
Mining	40	1.60%	70	3.02%
Manufacturing	265	10.58%	175	7.56%
Construction	140	5.59%	120	5.18%
Transportation. & Utilities	185	7.39%	195	8.42%
Retail and Wholesale	205	8.18%	250	10.80%
Finance	70	2.79%	50	2.16%
Business & Community Services	610	24.35%	585	25.27%
Public Administration	150	5.99%	85	3.67%
Total All Industries	2,505	100.00%	2,315	100.00%

Source: Statistics Canada 1996 & 2001 Census (numbers may not add up due to rounding)

Lamont County Labour Force By Industry - 2001



Labour Force by Major Occupational Groups	1996	%	2001	%
Management occupations	40	1.60%	135	5.83%
Business, Finances and administrative occupations	320	12.77%	225	9.72%
Natural and applied sciences and related occupations	40	1.60%	45	1.94%
Health occupations	105	4.19%	100	4.32%
Occupations in social science; education; government and religion	60	2.40%	75	3.24%
Occupations in art; culture; recreation and sport	25	1.00%	20	0.86%

Sales and service occupations	350	13.97%	380	16.41%
Trades; transport; equipment operators and related occupations	450	17.96%	495	21.38%
Occupations unique to primary industry	910	36.33%	765	33.05%
Occupations unique to processing; manufacturing and utilities	205	8.18%	70	3.02%
Occupations not elsewhere classified	20	0.80%	0	0.00%
Total - All Occupations (major groups)	2,505	100.00%	2,315	100.00%
Females - All Occupations	1,040	41.52%	965	41.68%
Males - All Occupations	1,465	58.48%	1,350	58.32%

Source: Statistics Canada 1996 & 2001 Census (numbers may not add up due to rounding)

Income

Family Income (Number of Families)	1996	%	2001	%
less than \$19,999	155	13.36%	145	13.12%
\$20,000 - \$39,999	390	33.62%	420	38.01%
\$40,000 - \$59,999	285	24.57%	260	23.53%
\$60,000 and over	330	28.45%	310	28.05%
Total number of families	1,160	100.00%	1,135	102.71%
Average family income	\$47,111		\$58,499	
Median family income	\$41,314		\$44,139	

Source: Statistics Canada 1996 & 2001 Census (numbers may not add up due to rounding)

Household Income (Number of Households)	1996	%	2001	%
less than \$19,999	325	21.45%	280	18.18%
\$20,000 - \$39,999	525	34.65%	475	30.84%
\$40,000 - \$59,999	290	19.14%	270	17.53%
\$60,000 and over	95	6.27%	505	32.79%
Total number of households	1,515	100.00%	1,540	100.00%
Average household income	\$42,485		\$53,840	
Median household income	\$35,244		\$40,156	

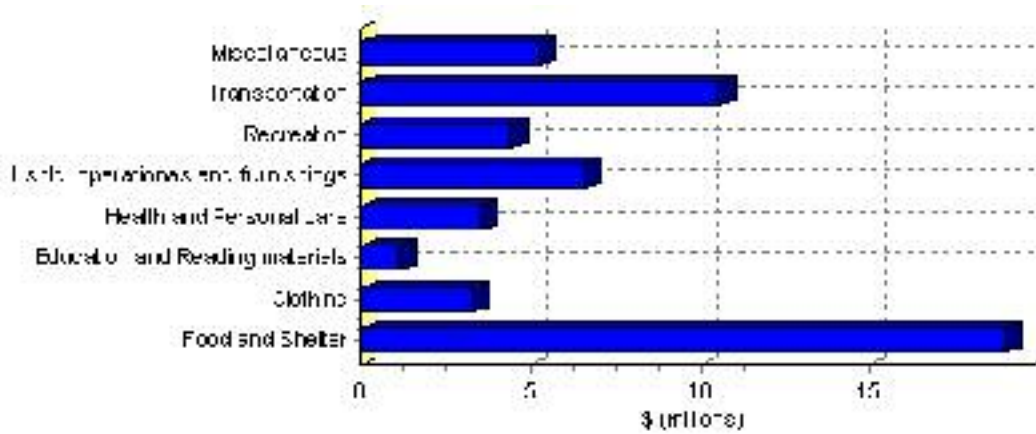
Source: Statistics Canada 1996 & 2001 Census (numbers may not add up due to rounding)

Family Expenditure

Expenditure Category	1992	% of total	1996	% of total
Food and Shelter	\$0	0.00%	\$18,983,215	35.26%
Clothing	\$0	0.00%	\$3,300,590	6.13%
Education and Reading materials	\$0	0.00%	\$1,118,613	2.08%
Health and Personal care	\$0	0.00%	\$3,558,127	6.61%
Hshld. operations and furnishings	\$0	0.00%	\$6,629,069	12.31%
Recreation	\$0	0.00%	\$4,432,116	8.23%
Transportation	\$0	0.00%	\$10,570,415	19.63%
Miscellaneous	\$0	0.00%	\$5,245,864	9.74%
Total Current Consumption	\$0	0.00%	\$53,838,009	100.00%
Total # of Households	0		1,517	
Average Consumption per Household	\$0		\$35,490	

Source: Statistics Canada Family Expenditure Survey 1992 & 1996 (numbers may not add up due to rounding).

Lamont County Family Expenditures (1996)



Dwellings

Occupied Private Dwellings by Type	1996	% of total	2001	% of total
Apartments	0	0.00%	0	0.00%
Detached Duplexes	0	0.00%	5	0.32%
Movable Dwellings	135	8.91%	90	5.83%
Other single attached house	0	0.00%	0	0.00%
Row and semi-detached house	0	0.00%	15	0.97%
Single-detached house	1,380	91.09%	1,445	93.53%
Total number of occupied private dwellings	1,515	100.00%	1,545	100.00%
Private dwellings, owned	1,425	94.06%	1,415	91.59%
Private Dwellings, rented	95	6.27%	130	8.41%

Source: Statistics Canada 1996 & 2001 Census (numbers may not add up due to rounding)

Private Dwellings by Period of Construction	# of Dwellings	% of total
Period of construction, before 1946	295	19.09%
Period of construction, 1946 - 1960	295	19.09%
Period of construction, 1961 - 1970	145	9.39%
Period of construction, 1971 - 1980	400	25.89%
Period of construction, 1981 - 1990	245	15.86%
Period of construction, 1991 - 2001	165	10.68%
Total number of private dwellings constructed	1,545	100.00%

Source: Statistics Canada 2001 Census (numbers may not add up due to rounding)

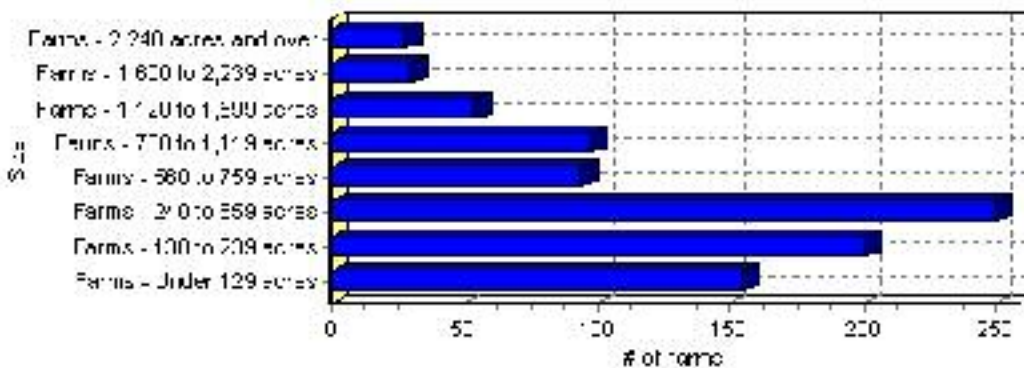
Farming

Lamont County Total Farm Area : 910 acres

Farms by Total Farm Area (2001)	# of Farms	% of total
Farms - Under 129 acres	155	17.03%
Farms - 130 to 239 acres	201	22.09%
Farms - 240 to 559 acres	250	27.47%
Farms - 560 to 759 acres	94	10.33%
Farms - 760 to 1,119 acres	98	10.77%
Farms - 1,120 to 1,599 acres	54	5.93%
Farms - 1,600 to 2,239 acres	30	3.30%
Farms - 2,240 acres and over	28	3.08%
Total number of farms reporting	910	100.00%

Source: Statistics Canada 2001 Census of Agriculture(numbers may not add up due to rounding)

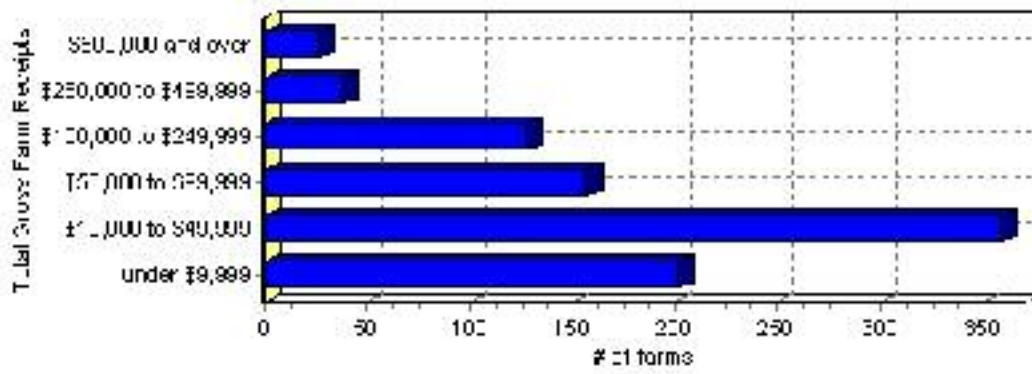
of Farms by Total Farm Area



Farms by Total Gross Farm Receipts - 2001	# of Farms	% of total
Farms gross farm receipts - under \$9,999	202	22.20%
Farms gross farm receipts - \$10,000 to \$49,999	359	39.45%
Farms gross farm receipts - \$50,000 to \$99,999	157	17.25%
Farms gross farm receipts - \$100,000 to \$249,999	128	14.07%
Farms gross farm receipts - \$250,000 to \$499,999	38	4.18%
Farms gross farm receipts - \$500,000 and over	26	2.86%
Total number of farms reporting	910	100.00%

Source: Statistics Canada 2001 Census of Agriculture(numbers may not add up due to rounding)

Total Gross Farm Receipts

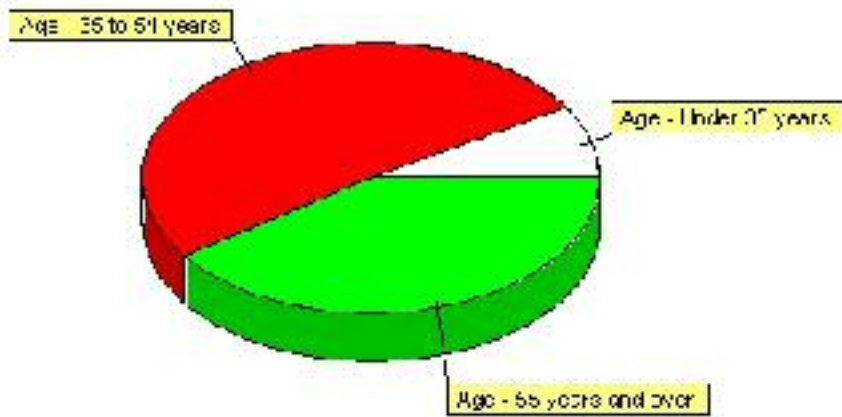


Farming, Continued

Characteristics of Farm Operators	#	%
Age - Under 35 years	110	8.76%
Age - 35 to 54 years	640	51.00%
Age - 55 years and over	505	40.24%
Average age of operators	52	
Number of operators - Female	315	25.10%
Number of operators - Male	940	74.90%
Total number of operators reporting	1,255	100.00%

Source: Statistics Canada 2001 Census of Agriculture (numbers may not add up due to rounding)

Age of Farm Operators



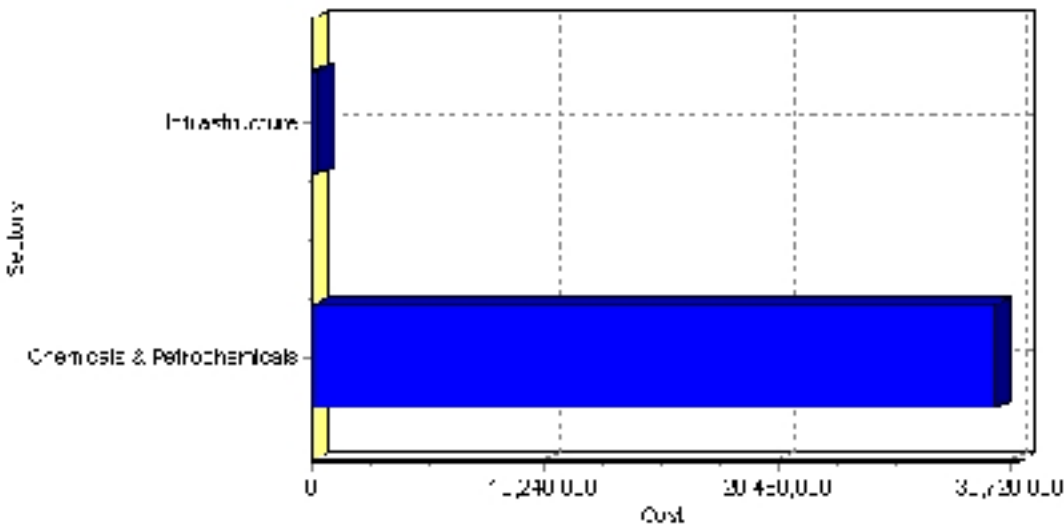
Projects

Summary of Projects in Lamont County as of September 2006

Project Sector	Number of Projects	Project Cost
Chemicals & Petrochemicals	1	\$30,000,000
Infrastructure	1	\$250,000
Total	2	\$30,250,000

This inventory lists projects in Alberta that have recently been completed, are under construction, or are proposed to start construction. Not all projects are listed due to reasons of confidentiality and/or due to information not being available at the time of printing. Project data is obtained from public information sources, where possible, this data has been verified with the project proponent/developer, users of the Inventory may wish to confirm project data with the proponent/developer. The inventory does not breakdown project expenditures by any given year. The cost of a project is the value of expenditures expected over all phases of project construction, which may span over two or more years. Cost of projects listed in the Inventory are estimated values only. Source: Alberta Economic Development, 2004.

Value of Projects by Sector (as of September 2006)



Project Status	Number of Projects	Project Cost
Announced	1	\$250,000
Proposed	1	\$30,000,000
Total	2	\$30,250,000

This inventory lists projects in Alberta that have recently been completed, are under construction, or are proposed to start construction. Not all projects are listed due to reasons of confidentiality and/or due to information not being available at the time of printing. Project data is obtained from public information sources, where possible, this data has been verified with the project proponent/developer, users of the Inventory may wish to confirm project data with the proponent/developer. The inventory does not breakdown project expenditures by any given year. The cost of a project is the value of expenditures expected over all phases of project construction, which may span over two or more years. Cost of projects listed in the Inventory are estimated values only. Source: Alberta Economic Development, 2004.

Largest Projects in Lamont County as of September 2006

Company Name	Project Description	Project Location	Project Cost	Construction Schedule	Status
Hazco Environmental Services	Sulphur Processing Facility	Lamont County	\$30,000,000	-	Proposed
Morningside Community Hall Association	New Community Hall	Lacombe County (Morningside)	\$250,000	2006-2007	Announced

Disclaimer: Information in this profile has been provided from a variety of external sources. Although every effort has been made to ensure the accuracy, currency and reliability of the content and data, AlbertaFirst.com Ltd. accepts no responsibility in this regard.

© AlbertaFirst.com Ltd., 2006.