

Sedgewick

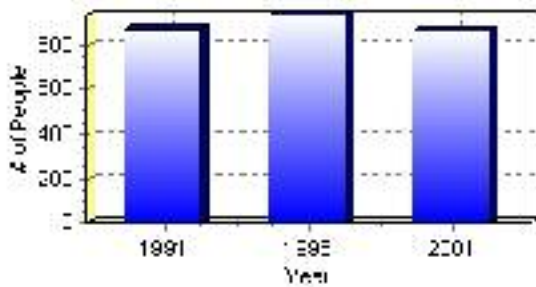
Population

Total Population

Population 2004*	865
Population 2003*	865
Population 2002*	865
Population 2001**	865
Population 2000*	937
Population 1996**	937
Population 1991**	874
Population % change 1991-1996	6.72%
Population % change 1996-2001	-8.32%

* Source: Official Population List, Alberta Municipal Affairs
** Source: Statistics Canada 1991, 1996, & 2001 Census

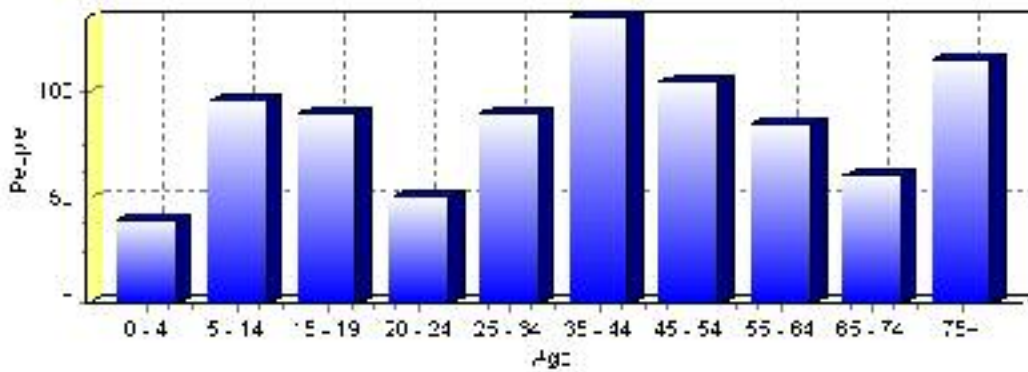
Total Population 1991-2001



Population by Age and Gender	1996 Male	1996 Female	1996 Total	2001 Male	2001 Female	2001 Total
Age 0 - 4	25	35	60	20	20	40
Age 5 - 14	70	75	145	45	50	95
Age 15 - 19	30	30	60	45	45	90
Age 20 - 24	20	20	40	30	20	50
Age 25 - 34	55	65	120	50	40	90
Age 35 - 44	75	60	135	60	75	135
Age 45 - 54	40	40	80	60	45	105
Age 55 - 64	45	45	90	40	45	85
Age 65 - 74	25	40	65	25	35	60
Age 75 and older	50	85	135	40	75	115
Total All Persons	440	495	935	410	455	865

Source: Statistics Canada 1996 & 2001 Census (numbers may not add up due to rounding)

Sedgewick Population by Age Group (2001)

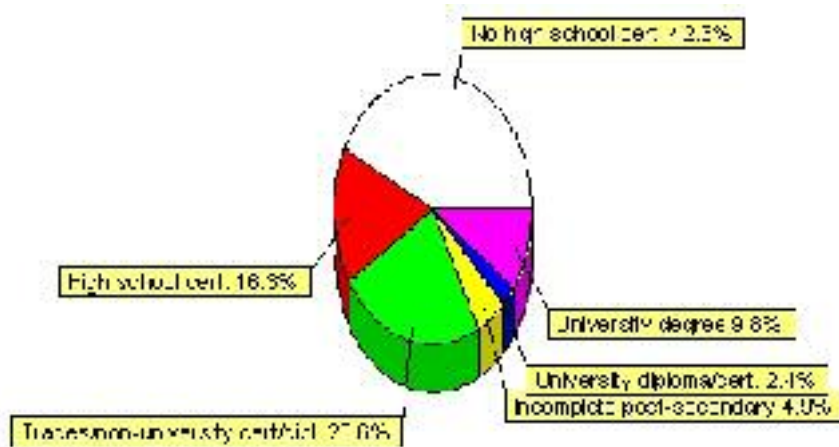


Education Statistics

Highest level of schooling for Population 20yrs and older	2001	%
People without high school certificates	260	42.28%
People with high school certificates	100	16.26%
People with trades or non-university certificate or diploma	145	23.58%
People with post-secondary education (not completed)	30	4.88%
People with university diploma/certificate	15	2.44%
People with university degree	60	9.76%
Total Population 20 years and older	615	100.00%

Source: Statistics Canada 2001 Census (numbers may not add up due to rounding)

Sedgewick Highest Level of Schooling 2001



Population with Post Secondary Qualifications	1996	%	2001	%
Agriculture and biological sciences	10	4.65%	20	8.33%
Commerce, management and business administration	75	34.88%	50	20.83%
Educational, recreational and counseling services	20	9.30%	20	8.33%
Engineering and applied science tech. and trades	45	20.93%	60	25.00%
Engineering and applied sciences	10	4.65%	10	4.17%
Fine and applied arts	0	0.00%	20	8.33%
Health professionals, science and technologies	15	6.98%	55	22.92%
Humanities and related fields	10	4.65%	0	0.00%
Mathematics and physical sciences	0	0.00%	0	0.00%
Social sciences and related fields	15	6.98%	15	6.25%
Other and/or no specialization	0	0.00%	0	0.00%
Total people with post secondary qualifications	215	100.00%	240	100.00%
Females with post-secondary qualifications	90	41.86%	135	56.25%
Males with post-secondary qualifications	125	58.14%	105	43.75%

Source: Statistics Canada 1996 & 2001 Census (numbers may not add up due to rounding)

Labour Force

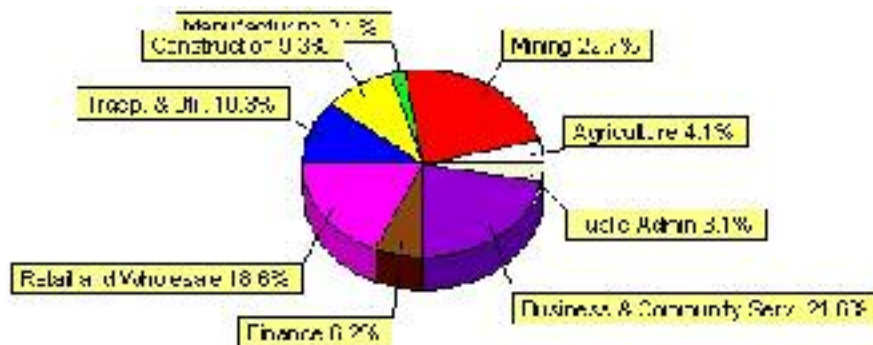
Labour force by activity	1996	2001
In the labour force, both sexes	385	490
Not in the labour force, both sexes	300	225
Total population 15 and over	685	710
Employed, both sexes	345	465
Unemployed, both sexes	40	25
Participation rate, both sexes	56.00%	69.00%
Unemployment rate, both sexes	10.00%	5.00%

Source: Statistics Canada 1996 & 2001 Census (numbers may not add up due to rounding)

Labour Force by Industry Division	1996	% of total	2001	% of total
Agriculture	15	3.90%	20	4.12%
Mining	100	25.97%	110	22.68%
Manufacturing	20	5.19%	10	2.06%
Construction	0	0.00%	45	9.28%
Transportation. & Utilities	35	9.09%	50	10.31%
Retail and Wholesale	50	12.99%	90	18.56%
Finance	0	0.00%	30	6.19%
Business & Community Services	115	29.87%	105	21.65%
Public Administration	10	2.60%	15	3.09%
Total All Industries	385	100.00%	485	100.00%

Source: Statistics Canada 1996 & 2001 Census (numbers may not add up due to rounding)

Sedgewick Labour Force By Industry - 2001



Labour Force by Major Occupational Groups	1996	%	2001	%
Management occupations	0	0.00%	75	15.63%
Business, Finances and administrative occupations	95	24.68%	60	12.50%
Natural and applied sciences and related occupations	10	2.60%	25	5.21%
Health occupations	10	2.60%	35	7.29%
Occupations in social science; education; government and religion	30	7.79%	35	7.29%
Occupations in art; culture; recreation and sport	10	2.60%	0	0.00%

Sales and service occupations	85	22.08%	100	20.83%
Trades; transport; equipment operators and related occupations	45	11.69%	80	16.67%
Occupations unique to primary industry	75	19.48%	50	10.42%
Occupations unique to processing; manufacturing and utilities	25	6.49%	20	4.17%
Occupations not elsewhere classified	0	0.00%	0	0.00%
Total - All Occupations (major groups)	385	100.00%	480	100.00%
Females - All Occupations	155	40.26%	220	45.83%
Males - All Occupations	230	59.74%	265	55.21%

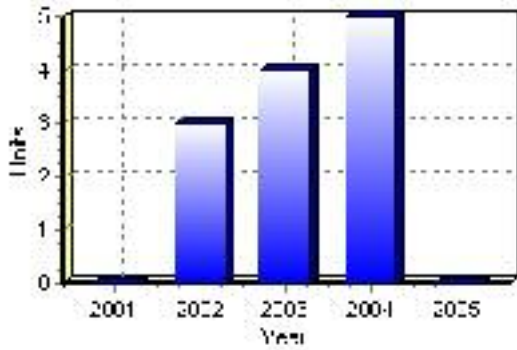
Source: Statistics Canada 1996 & 2001 Census (numbers may not add up due to rounding)

Building Permits

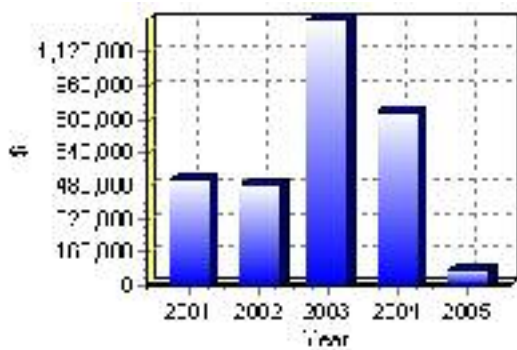
Total Building Permit Values	2001	2002	2003	2004	2005
Building Permits Value, Commercial	\$0	\$50,000	\$359,000	\$0	\$43,000
Building Permits Value, Industrial	\$0	\$0	\$30,000	\$0	\$0
Building Permits Value, Institutional	\$490,000	\$0	\$0	\$6,000	\$15,000
Building Permits Value, Residential	\$21,000	\$427,000	\$886,000	\$831,000	\$14,000
Building Permits Value, Total	\$511,000	\$477,000	\$1,275,000	\$837,000	\$72,000
Total Housing Starts	0	3	4	5	0

Source: Statistics Canada 2000-2004 Building Permits (numbers may not add up due to rounding)

Total Housing Starts



Value of Building Permits



Dwellings

Occupied Private Dwellings by Type	1996	% of total	2001	% of total
Apartments	20	5.41%	25	6.85%
Detached Duplexes	0	0.00%	0	0.00%
Movable Dwellings	0	0.00%	5	1.37%
Other single attached house	0	0.00%	5	1.37%
Row and semi-detached house	0	0.00%	10	2.74%
Single-detached house	345	93.24%	320	87.67%
Total number of occupied private dwellings	370	100.00%	365	100.00%
Private dwellings, owned	290	78.38%	300	82.19%
Private Dwellings, rented	80	21.62%	65	17.81%

Source: Statistics Canada 1996 & 2001 Census (numbers may not add up due to rounding)

Private Dwellings by Period of Construction	# of Dwellings	% of total
Period of construction, before 1946	75	20.83%
Period of construction, 1946 - 1960	65	18.06%
Period of construction, 1961 - 1970	45	12.50%
Period of construction, 1971 - 1980	65	18.06%
Period of construction, 1981 - 1990	40	11.11%
Period of construction, 1991 - 2001	70	19.44%
Total number of private dwellings constructed	360	100.00%

Source: Statistics Canada 2001 Census (numbers may not add up due to rounding)

Disclaimer: Information in this profile has been provided from a variety of external sources. Although every effort has been made to ensure the accuracy, currency and reliability of the content and data, AlbertaFirst.com Ltd. accepts no responsibility in this regard.

© AlbertaFirst.com Ltd., 2006.