

Donalda

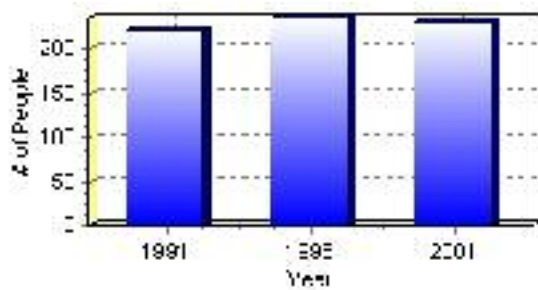
Population

Total Population

Population 2004*	230
Population 2003*	230
Population 2002*	230
Population 2001**	230
Population 2000*	241
Population 1996**	235
Population 1991**	221
Population % change 1991-1996	5.96%
Population % change 1996-2001	-2.17%

* Source: Official Population List, Alberta Municipal Affairs
** Source: Statistics Canada 1991, 1996, & 2001 Census

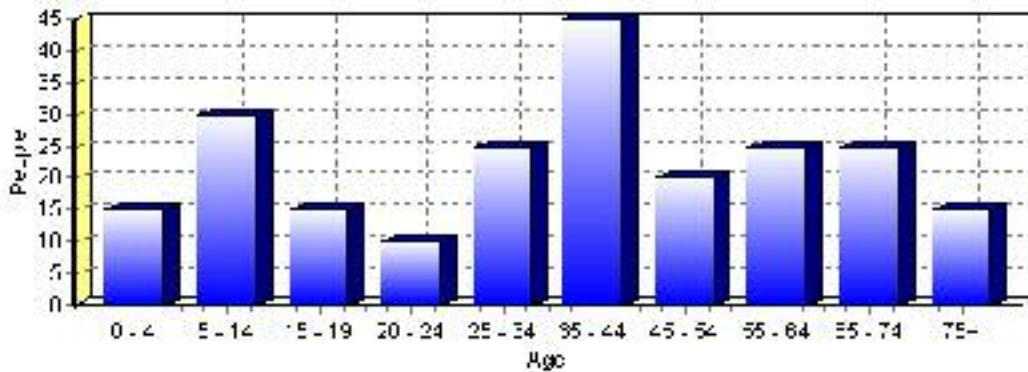
Total Population 1991-2001



Population by Age and Gender	1996 Male	1996 Female	1996 Total	2001 Male	2001 Female	2001 Total
Age 0 - 4	10	0	10	5	10	15
Age 5 - 14	10	15	25	15	15	30
Age 15 - 19	5	10	15	5	10	15
Age 20 - 24	10	10	20	5	5	10
Age 25 - 34	20	15	35	15	10	25
Age 35 - 44	20	15	35	20	25	45
Age 45 - 54	5	10	15	10	10	20
Age 55 - 64	15	10	25	15	10	25
Age 65 - 74	15	15	30	10	15	25
Age 75 and older	0	5	5	5	10	15
Total All Persons	125	110	235	110	120	230

Source: Statistics Canada 1996 & 2001 Census (numbers may not add up due to rounding)

Donalda Population by Age Group (2001)

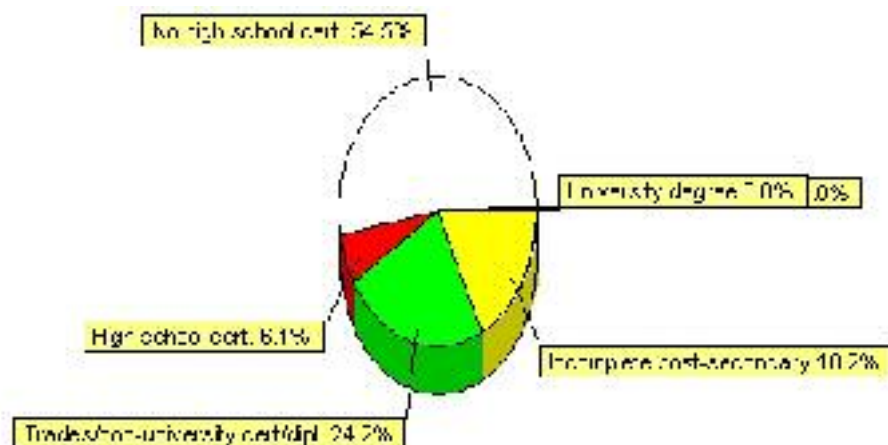


Education Statistics

Highest level of schooling for Population 20yrs and older	2001	%
People without high school certificates	90	54.55%
People with high school certificates	10	6.06%
People with trades or non-university certificate or diploma	40	24.24%
People with post-secondary education (not completed)	30	18.18%
People with university diploma/certificate	0	0.00%
People with university degree	0	0.00%
Total Population 20 years and older	165	100.00%

Source: Statistics Canada 2001 Census (numbers may not add up due to rounding)

Donalda Highest Level of Schooling 2001



Population with Post Secondary Qualifications	1996	%	2001	%
Agriculture and biological sciences	0	0.00%	0	0.00%
Commerce, management and business administration	10	18.18%	15	33.33%
Educational, recreational and counseling services	0	0.00%	0	0.00%
Engineering and applied science tech. and trades	35	63.64%	10	22.22%
Engineering and applied sciences	0	0.00%	0	0.00%
Fine and applied arts	10	18.18%	0	0.00%
Health professionals, science and technologies	0	0.00%	10	22.22%
Humanities and related fields	0	0.00%	0	0.00%
Mathematics and physical sciences	0	0.00%	0	0.00%
Social sciences and related fields	0	0.00%	0	0.00%
Other and/or no specialization	0	0.00%	0	0.00%
Total people with post secondary qualifications	55	100.00%	45	100.00%
Females with post-secondary qualifications	30	54.55%	25	55.56%
Males with post-secondary qualifications	25	45.45%	20	44.44%

Source: Statistics Canada 1996 & 2001 Census (numbers may not add up due to rounding)

Labour Force

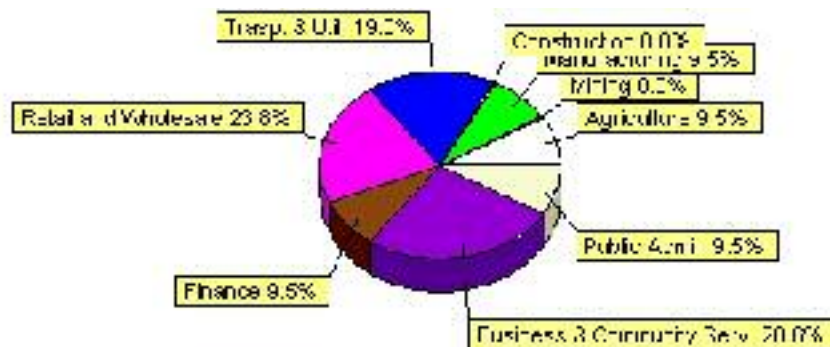
Labour force by activity	1996	2001
In the labour force, both sexes	100	105
Not in the labour force, both sexes	85	80
Total population 15 and over	185	180
Employed, both sexes	100	105
Unemployed, both sexes	0	0
Participation rate, both sexes	54.00%	58.00%
Unemployment rate, both sexes	0.00%	0.00%

Source: Statistics Canada 1996 & 2001 Census (numbers may not add up due to rounding)

Labour Force by Industry Division	1996	% of total	2001	% of total
Agriculture	10	10.00%	10	9.52%
Mining	10	10.00%	0	0.00%
Manufacturing	10	10.00%	10	9.52%
Construction	15	15.00%	0	0.00%
Transportation. & Utilities	10	10.00%	20	19.05%
Retail and Wholesale	20	20.00%	25	23.81%
Finance	0	0.00%	10	9.52%
Business & Community Services	35	35.00%	30	28.57%
Public Administration	0	0.00%	10	9.52%
Total All Industries	100	100.00%	105	100.00%

Source: Statistics Canada 1996 & 2001 Census (numbers may not add up due to rounding)

Donalda Labour Force By Industry - 2001



Labour Force by Major Occupational Groups	1996	%	2001	%
Management occupations	10	10.00%	20	19.05%
Business, Finances and administrative occupations	0	0.00%	25	23.81%
Natural and applied sciences and related occupations	0	0.00%	0	0.00%
Health occupations	0	0.00%	0	0.00%
Occupations in social science; education; government and religion	0	0.00%	0	0.00%
Occupations in art; culture; recreation and sport	10	10.00%	0	0.00%

Sales and service occupations	30	30.00%	10	9.52%
Trades; transport; equipment operators and related occupations	30	30.00%	20	19.05%
Occupations unique to primary industry	20	20.00%	10	9.52%
Occupations unique to processing; manufacturing and utilities	0	0.00%	15	14.29%
Occupations not elsewhere classified	0	0.00%	0	0.00%
Total - All Occupations (major groups)	100	100.00%	105	100.00%
Females - All Occupations	45	45.00%	45	42.86%
Males - All Occupations	55	55.00%	60	57.14%

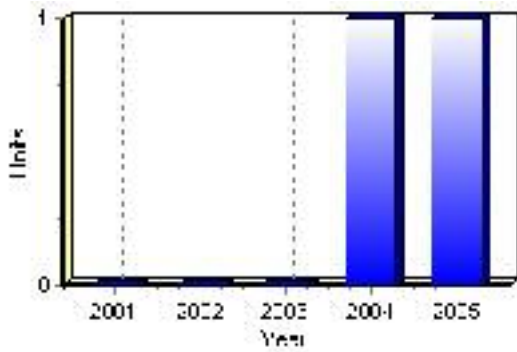
Source: Statistics Canada 1996 & 2001 Census (numbers may not add up due to rounding)

Building Permits

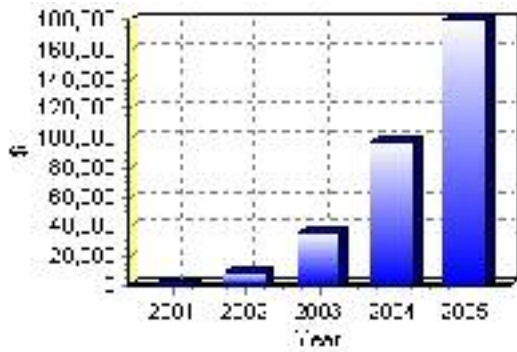
Total Building Permit Values	2001	2002	2003	2004	2005
Building Permits Value, Commercial	\$0	\$0	\$0	\$3,000	\$0
Building Permits Value, Industrial	\$0	\$0	\$30,000	\$0	\$0
Building Permits Value, Institutional	\$0	\$0	\$0	\$0	\$0
Building Permits Value, Residential	\$0	\$8,000	\$5,000	\$95,000	\$180,000
Building Permits Value, Total	\$0	\$8,000	\$35,000	\$98,000	\$180,000
Total Housing Starts	0	0	0	1	1

Source: Statistics Canada 2000-2004 Building Permits (numbers may not add up due to rounding)

Total Housing Starts



Value of Building Permits



Dwellings

Occupied Private Dwellings by Type	1996	% of total	2001	% of total
Apartments	0	0.00%	0	0.00%
Detached Duplexes	0	0.00%	0	0.00%
Movable Dwellings	25	23.81%	25	25.00%
Other single attached house	10	9.52%	0	0.00%
Row and semi-detached house	0	0.00%	0	0.00%
Single-detached house	75	71.43%	75	75.00%
Total number of occupied private dwellings	105	100.00%	100	100.00%
Private dwellings, owned	65	61.90%	85	85.00%
Private Dwellings, rented	40	38.10%	15	15.00%

Source: Statistics Canada 1996 & 2001 Census (numbers may not add up due to rounding)

Private Dwellings by Period of Construction	# of Dwellings	% of total
Period of construction, before 1946	25	26.32%
Period of construction, 1946 - 1960	15	15.79%
Period of construction, 1961 - 1970	15	15.79%
Period of construction, 1971 - 1980	30	31.58%
Period of construction, 1981 - 1990	0	0.00%
Period of construction, 1991 - 2001	10	10.53%
Total number of private dwellings constructed	95	100.00%

Source: Statistics Canada 2001 Census (numbers may not add up due to rounding)

Disclaimer: Information in this profile has been provided from a variety of external sources. Although every effort has been made to ensure the accuracy, currency and reliability of the content and data, AlbertaFirst.com Ltd. accepts no responsibility in this regard.

© AlbertaFirst.com Ltd., 2006.