

# Millet

[www.millet.ca](http://www.millet.ca)

## Welcome

**Millet** is a progressive Town offering its citizens an ideal location with local businesses to meet your service, personal and professional needs; a diversity of recreational and leisure-time programs; excellent schools; several churches; and a variety of organizations for different age groups.

Millet has all the big city advantages with the small town friendliness rural Albertans are known for. Some advantages of doing business include: quick convenient service; friendly, personable service; support of the local tax base; and creates local employment. Some advantages of living in Millet include: access to quiet facilities; less pollution; personal safety; and a caring, friendly community.

Millet enjoys toll-free dialing to Edmonton, Nisku, Namao, St. Alberta, Sherwood Park, Beaumont, Wetaskiwin, and Leduc.

I invite you to take a walk around our community - look at the subdivisions, enjoy the parks, stop in at the stores, meet some residents. Should you have any questions - ask anyone - or drop in at the Town Office, or give me a call at (780) 387-4934.

Whatever your original reasons for looking at Millet are, I am confident you will realize them and many more.

I feel good about the future of Millet and I am glad you have chosen to give us some thought and we would encourage you to be a part of it. I would encourage you to drop by and visit Millet on the Internet at [www.millet.ca](http://www.millet.ca)

Yours truly,

Laurie Linaker  
Mayor of Millet

## Area Overview

The Town of Millet was named in honour of August Millet, who was believed to be a canoeist for Father Lacombe. On June 17, 1903, Millet was proclaimed a Village by an Order-in-Council of the Northwest Territories. By 1908, Millet's first Councillors were elected.

In October 1927 a disastrous fire destroyed many of the buildings along the east side of Railway Street, but the businessmen rebuilt across the street.

In 1950, the Board of Trade built a Community Hall and gave it to the Village. The Hall is still being used today. In 1953, Northwestern Utilities brought natural gas to the Village. Griffiths Scott School was built in 1982, and a Senior Citizens Apartment was completed in 1983. On September 1st, 1983, Millet was declared a Town, and "Coming to Town" celebrations were held on October 15, 1983.

## Community Services

**Municipal**  
Town of Millet

Box 270  
Millet, Alberta  
T0C 1Z0  
Tel: 780-387-4554  
Fax: 780-387-4459

Millet & District Public Library  
387-5222

Millet and District Museum and Archives  
Box 178  
Millet, AB  
T0C 1Z0  
Phone: (780) 387-5558  
Fax: (780) 387-5548  
Email: [museum@millet.ca](mailto:museum@millet.ca)  
Web: [www.millet.ca/attractions.htm](http://www.millet.ca/attractions.htm)  
Contact: Tracey Leavitt, Co-ordinator

## **Federal**

Canada Post Office  
387-5151

# **Community Lifestyle**

## **Recreation**

The Millet Leisure Services Advisory Committee provides a variety of recreational, cultural, and educational programs for residents of all ages of the community.

Local recreational facilities include the Agriplex [arena, hall], Community Hall, Curling Rink, Fish & Game Building, Royal Canadian Legion, Millet & District Lions Family Hall, and the Scout Hall. Some outdoor facilities include skating rinks, ball diamonds, tennis courts, basketball courts, soccer fields and walking trails.

There are several recreation and sports groups in Millet which include soccer, baseball, hockey and figure skating.

Camping facilities include Lions Memorial Park Campground and Pipestone R.V. Park/Motel [campground and driving range].

## **Community Organizations**

Some local community organizations include Block Parents, 1st Millet Scouting Association, Girl Guides of Canada, Millet Agricultural & Recreational Society, Millet Arts & Crafts Guild, Millet Chamber of Commerce, Millet Citizens On Patrol (COPS), Millet Fish & Game Association, Millet & District Historical Society, Millet & District Lions Club, Millet Senior Citizens, Millet Volunteer Fire Department and the Royal Canadian Legion.

Sports clubs include Millet Curling Club, Millet Minor Ball, Millet Minor Hockey, Millet Skating Club and Millet Soccer Association.

## **Religious Services**

- Millet Evangelical Free Church
- Millet United Church
- St. Norberts Roman Catholic Church
- St. Peters Lutheran Church
- Springs of Life Fellowship
- Vang Lutheran Church
- Zion Lutheran Church

- Wiesenthal Baptist Church
- Heimdal Pentecostal Church

## Special Annual Events/Attractions

- Millet Days - Second full weekend of June. Includes Parade, Trade Show, Family Dance, Clowns, Face Painting, Fireworks, Beer Gardens, Soccer Tournaments and Baseball Tournaments.
- Harvest Festival
- Christmas Concerts
- Christmas Festival
- Concert in the Country
- Volunteer Week
- Leaders of Tomorrow

## Hospitality

### Accommodation

- Pipestone Hotel
- Broadview Farm [Bed & Breakfast]
- Gwynalta Farm [Bed & Breakfast]

## Restaurants

- A Family Affair Restaurant
- Burger Barn
- Full Moon Saloon
- Leanne's Bar & Grill
- Restless Wheels Cafe



One of many beautiful flower beds; this one is located on Secondary Highway #616 near the entrance to Moonen Heights subdivision.

## Economic Base

The economic base of Millet includes natural resources and agriculture, natural gas processing, and commercial/light

industry.

## Economic Facts

- Major Businesses
- Financial Institutions
- Alberta Treasury Branch

## Education

Millet is part of the Wetaskiwin Regional School Division #11, headquartered in Wetaskiwin [Tel: 780-352-6018].

Millet Little Peoples Indoor Play Society (PIPS)

### Public

- Schools in Millet include Millet Kindergarten [K]
- Millet School [1-4]
- and Griffith Scott School [5-9].
- Senior high school students are bussed to Wetaskiwin Composite High School [10-12].

Tennis courts, playground equipment and ball diamonds are located on the school grounds. The schools are also utilized for various other functions such as volleyball, basketball, etc.

## Emergency Services

### (9-1-1 Service)

#### Fire Protection

The Millet Fire Department is operated by a 28-man crew, several of whom have attended the Alberta Fire Training School for advanced training in fire fighting techniques and rescue.

#### They have at their disposal:

- 1 - Rapid Response Pumper with Foam
- 1 - Emergency vehicle with air, jaws of life, and is used as a communication centre
- 1 - Rural pumper with 650 GPM Front Mont 800 gallon capacity
- 1 - Town pumper with 1050 GPM 800 gallon capacity
- 1 - 1650 gallon tank truck with firefighting capacity
- 1 - 1600 gallon tank truck with firefighting capacity

The Millet Fire Department works closely with the East-West Millet Rural Fire Co-op Limited, the latter of which was formed in 1977 to provide fire protection to the rural area. All equipment is housed and operated by the Millet Fire Department.

#### Police Services

The Wetaskiwin Rural Detachment of the Royal Canadian Mounted Police [Tel: 780-352-2218] and County of Wetaskiwin Constabulary [Tel: 780-352-3321] are responsible for the Town of Millet policing concerns, and enforcing the Town's Bylaws.

#### Ambulance Services

Peace Hills Emergency Medical Services services are available from Wetaskiwin.

## Health Care

Wetaskiwin General Hospital provides medical service to Millet residents. Local medical services include the Associate Clinic and the Millet IDA Pharmacy. Nursing homes are available in both Leduc and Wetaskiwin, and a health unit is located in Wetaskiwin.

Services for seniors include a local Seniors' Lodge.

## Key Contacts for Business Development

### ***Municipal***

Town of Millet

Box 270

Millet, Alberta

T0C 1Z0

Tel: 780-387-4554

Fax: 780-387-4459

David Gursky

*Mayor*

[millet@millet.ca](mailto:millet@millet.ca)

E. Michael Storey, CLGM

Chief Administrative Officer

780-387-5355

[cao-storey@millet.ca](mailto:cao-storey@millet.ca)

### ***Provincial (Updated May 2006)***

Alberta Economic Development

Allan Walkey, Regional Manager

[allan.walkey@gov.ab.ca](mailto:allan.walkey@gov.ab.ca)

Dale Beddoes, Client Services Representative

[dale.beddoes@gov.ab.ca](mailto:dale.beddoes@gov.ab.ca)

5005 - 49 Street

Camrose, Alberta

T4V 1N5

Tel: 780-679-1235

Fax: 780-679-1250

LeRoy Johnson

*Member of the Legislative Assembly [MLA]*

Wetaskiwin-Camrose Constituency

Constituency Office

4870 - 51 Street

Camrose, AB

T4V 1S1

Phone: (780) 672-0000

Fax: (780) 672-6945

[wetaskiwin.camrose@assembly.ab.ca](mailto:wetaskiwin.camrose@assembly.ab.ca)

Legislature Office

#503 Legislature Building

10800-97 Avenue

Edmonton, AB T5K 2B6

Phone: (780) 415-0977

Fax: (780) 422-0351

### **Federal (Updated May 2006)**

Member of Parliament- Wetaskiwin, Alberta

CALKINS, Blaine (Conservative)

Parliamentary Address

House of Commons

Ottawa, Ontario

K1A 0A6

Telephone: (613) 995-8886

Fax: (613) 996-9860

E-Mail: [Calkins.B@parl.gc.ca](mailto:Calkins.B@parl.gc.ca)

Constituency Address

6-4612 - 50th Street

Ponoka, Alberta

T4J 1S7

Telephone: (403) 783-5530

Fax: (403) 783-5532

TTY:

E-Mail: [calkib1@parl.gc.ca](mailto:calkib1@parl.gc.ca)

## **Location**

The Town of Millet is located in the County of Wetaskiwin #10, on Highway 2A just north of the City of Wetaskiwin and south of the City of Leduc. It is 45 km south of south Edmonton, 19 km south of Leduc, 13 km north of Wetaskiwin, and 27 km south of the Edmonton International Airport.





# Post Secondary Education

Edmonton-based post-secondary institutions such as The University of Alberta, Northern Alberta Institute of Technology [NAIT], and Grant MacEwan Community College are within commuting distance of Millet.

Augustana University College is located in Camrose.

## Taxation

Mill Rates [2004]

Residential 13.81

Industrial/Commercial 20.16 Latest Total (Taxable) Assessment 88,340,660 (Basis of Assessment - Land and buildings at 100% of 2003 market value)

Per Capita Debt \$382 (as of 2003)

---

	<u>Residential/Farmland</u>	<u>Non-Residential</u>
<b>2005</b>		
Municipal Tax Rate	9.0130	12.0530
Education - Alberta School Foundation Fund Tax Rate	3.9250	6.2760
Seniors Lodge Accommodation Tax Rate	.0920	.0920

---

## Transportation

### Air Service

Edmonton International Airport is approximately 15 minutes to the north, and the Wetaskiwin Airport is 10 minutes south.

### Highways

Connecting highways include Highway 2A, Highway 2, and Secondary Highway 616 [east-west]. Highway 2A provides access to Leduc, Edmonton International Airport, Nisku, greater Edmonton [north], Wetaskiwin, Ponoka, and Red Deer [south]. Highway 2A connects with Highway 13 to Camrose just north of Wetaskiwin. Secondary Highway 616 provides access to Highway 2 - the main artery between Edmonton, Red Deer, and Calgary - and continues to Pigeon Lake and numerous summer villages [west], and also leads to Highway 814, Beaumont and Edmonton [east].

### Bus Services

Greyhound Bus Lines provides daily service. The Millet Lions Bus is also available to community groups.

### Couriers and Taxis

Loomis and Purolator both provide courier service.

## Utilities

### Electrical Power

EPCOR

Edmonton, AB

Tel: 780- 310-4300

### Natural Gas

Atco Gas Ltd.

Wetaskiwin, AB

Tel: 780-310-5678

## **Telephone**

TELUS

Tel: 780-310-2255

Millet enjoys toll-free dialing to Edmonton, Beaumont, Namao, Nisku, St. Albert, Sherwood Park, Leduc and Wetaskiwin.

Fibre optic cable runs through the town.

## **Water Supply**

The source of water is wells. The reservoir capacity, measured in treated substance, is 5,107,500 litres [850,000 gallons]. The pumping capacity is 30,645 litres [2,500 gallons] per minute "RPM 1,760". The average daily consumption is 465 cubic metres per day.

The usage rates for residential users is \$12.00 per month for the first 11 cubic meters, and \$0.60 per additional cubic meter thereafter. The usage rate for commercial users is \$14.20 per month for the first 11 cubic meters, and \$0.60 per additional cubic meter thereafter. The usage rate for public users is \$15.00 per month for the first 11 cubic meters, and \$0.60 per additional cubic meter thereafter. The usage rate for institutional users is \$12.00 per month for the first 11 cubic meters, and \$0.60 per additional cubic meter thereafter.

## **Waste Management**

Sewage treatment is provided by an anaerobic lagoon which is designed to meet the needs of 3,500 people.

The usage rates for residential users is \$13.25 per month per unit. The usage rate for offices is \$17.25 per month per unit. The usage rate for barber/beauty salons is \$16.25 per month per unit. The usage rate for carwashes is \$35.50 per month per stall. The usage rate for hotels is \$66.00 per month per unit. Finally, the usage rate for public/institutional users is \$80.00 per month per unit.

Garbage collection services are provided by Canadian Waste Ltd. Garbage pick-up is made every Friday morning. The charge for garbage collection is \$10.75 per month per household.



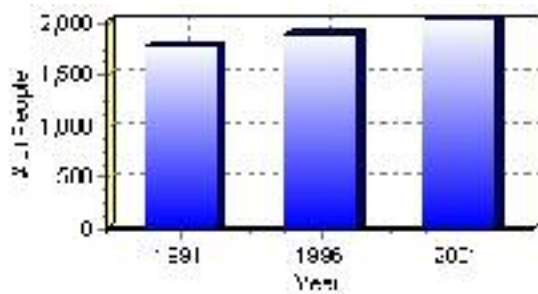
# Population

## Total Population

Population 2004*	2,037
Population 2003*	2,037
Population 2002*	2,037
Population 2001**	2,040
Population 2000*	1,894
Population 1996**	1,894
Population 1991**	1,782
Population % change 1991-1996	5.91%
Population % change 1996-2001	7.02%

\* Source: Official Population List, Alberta Municipal Affairs  
\*\* Source: Statistics Canada 1991, 1996, & 2001 Census

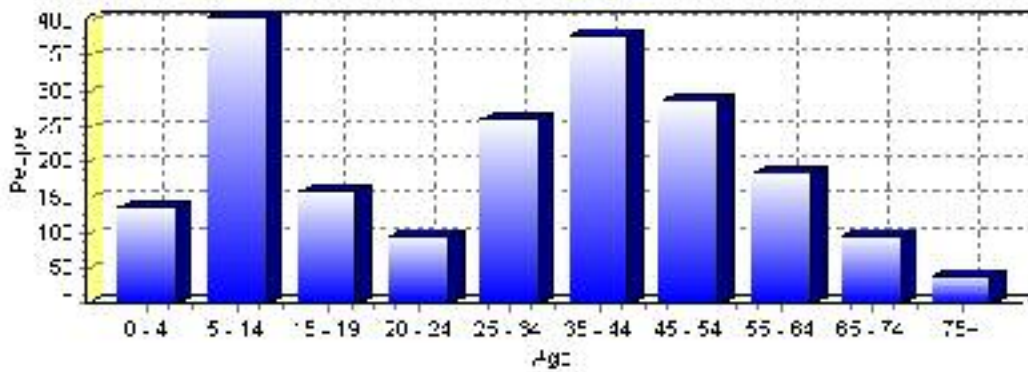
## Total Population 1991-2001



Population by Age and Gender	1996 Male	1996 Female	1996 Total	2001 Male	2001 Female	2001 Total
Age 0 - 4	95	80	175	75	60	135
Age 5 - 14	200	210	410	205	200	405
Age 15 - 19	70	55	125	80	80	160
Age 20 - 24	35	45	80	50	45	95
Age 25 - 34	155	175	330	125	135	260
Age 35 - 44	185	175	360	190	190	380
Age 45 - 54	95	105	200	135	150	285
Age 55 - 64	60	50	110	95	90	185
Age 65 - 74	45	35	80	50	45	95
Age 75 and older	10	20	30	20	20	40
Total All Persons	950	950	1,900	1,025	1,010	2,035

Source: Statistics Canada 1996 & 2001 Census (numbers may not add up due to rounding)

### Millet Population by Age Group (2001)

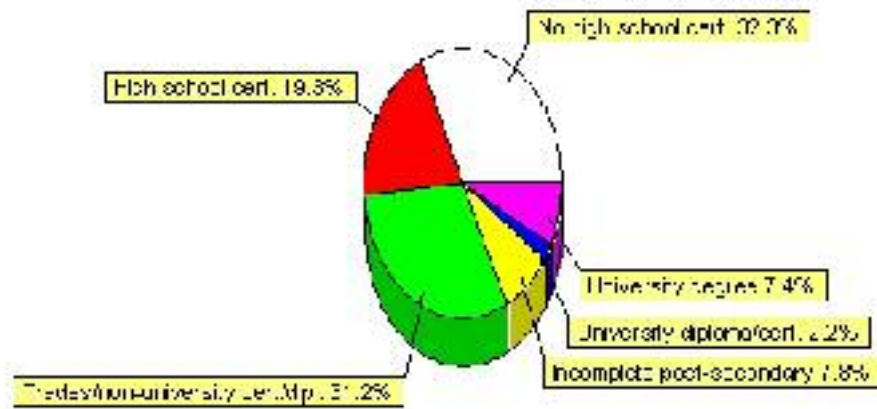


# Education Statistics

Highest level of schooling for Population 20yrs and older	2001	%
People without high school certificates	435	32.34%
People with high school certificates	260	19.33%
People with trades or non-university certificate or diploma	420	31.23%
People with post-secondary education (not completed)	105	7.81%
People with university diploma/certificate	30	2.23%
People with university degree	100	7.43%
Total Population 20 years and older	1,345	100.00%

Source: Statistics Canada 2001 Census (numbers may not add up due to rounding)

## Millet Highest Level of Schooling 2001



Population with Post Secondary Qualifications	1996	%	2001	%
Agriculture and biological sciences	30	7.06%	25	4.46%
Commerce, management and business administration	115	27.06%	135	24.11%
Educational, recreational and counseling services	35	8.24%	70	12.50%
Engineering and applied science tech. and trades	155	36.47%	160	28.57%
Engineering and applied sciences	0	0.00%	10	1.79%
Fine and applied arts	10	2.35%	35	6.25%
Health professionals, science and technologies	35	8.24%	55	9.82%
Humanities and related fields	15	3.53%	20	3.57%
Mathematics and physical sciences	10	2.35%	0	0.00%
Social sciences and related fields	10	2.35%	40	7.14%
Other and/or no specialization	10	2.35%	0	0.00%
Total people with post secondary qualifications	425	100.00%	560	100.00%
Females with post-secondary qualifications	190	44.71%	285	50.89%
Males with post-secondary qualifications	235	55.29%	275	49.11%

Source: Statistics Canada 1996 & 2001 Census (numbers may not add up due to rounding)

## Labour Force

Labour force by activity	1996	2001
In the labour force, both sexes	995	1,120
Not in the labour force, both sexes	315	385
Total population 15 and over	1,310	1,500
Employed, both sexes	935	1,045
Unemployed, both sexes	70	75
Participation rate, both sexes	76.00%	75.00%
Unemployment rate, both sexes	7.00%	7.00%

Source: Statistics Canada 1996 & 2001 Census (numbers may not add up due to rounding)

Labour Force by Industry Division	1996	% of total	2001	% of total
Agriculture	25	2.56%	0	0.00%
Mining	70	7.18%	135	12.22%
Manufacturing	80	8.21%	105	9.50%
Construction	75	7.69%	75	6.79%
Transportation. & Utilities	110	11.28%	90	8.14%
Retail and Wholesale	220	22.56%	160	14.48%
Finance	15	1.54%	50	4.52%
Business & Community Services	325	33.33%	430	38.91%
Public Administration	55	5.64%	50	4.52%
Total All Industries	975	100.00%	1,105	100.00%

Source: Statistics Canada 1996 & 2001 Census (numbers may not add up due to rounding)

### Millet Labour Force By Industry - 2001



Labour Force by Major Occupational Groups	1996	%	2001	%
Management occupations	60	6.19%	185	16.74%
Business, Finances and administrative occupations	185	19.07%	130	11.76%
Natural and applied sciences and related occupations	35	3.61%	35	3.17%
Health occupations	20	2.06%	20	1.81%
Occupations in social science; education; government and religion	40	4.12%	65	5.88%
Occupations in art; culture; recreation and sport	20	2.06%	20	1.81%

Sales and service occupations	310	31.96%	345	31.22%
Trades; transport; equipment operators and related occupations	165	17.01%	210	19.00%
Occupations unique to primary industry	55	5.67%	75	6.79%
Occupations unique to processing; manufacturing and utilities	75	7.73%	25	2.26%
Occupations not elsewhere classified	25	2.58%	10	0.90%
Total - All Occupations (major groups)	970	100.00%	1,105	100.00%
Females - All Occupations	430	44.33%	535	48.42%
Males - All Occupations	540	55.67%	575	52.04%

Source: Statistics Canada 1996 & 2001 Census (numbers may not add up due to rounding)

---

## Income

---

<b>Family Income (Number of Families)</b>	<b>1996</b>	<b>%</b>	<b>2001</b>	<b>%</b>
less than \$19,999	45	9.18%	55	11.83%
\$20,000 - \$39,999	105	21.43%	125	26.88%
\$40,000 - \$59,999	190	38.78%	110	23.66%
\$60,000 and over	150	30.61%	220	47.31%
Total number of families	490	100.00%	510	109.68%
Average family income	\$51,151		\$65,612	
Median family income	\$51,590		\$61,052	

Source: Statistics Canada 1996 & 2001 Census (numbers may not add up due to rounding)

---

---

<b>Household Income (Number of Households)</b>	<b>1996</b>	<b>%</b>	<b>2001</b>	<b>%</b>
less than \$19,999	120	18.90%	110	15.60%
\$20,000 - \$39,999	160	25.20%	155	21.99%
\$40,000 - \$59,999	205	32.28%	125	17.73%
\$60,000 and over	45	7.09%	310	43.97%
Total number of households	635	100.00%	705	100.00%
Average household income	\$45,086		\$60,355	
Median household income	\$44,033		\$49,744	

Source: Statistics Canada 1996 & 2001 Census (numbers may not add up due to rounding)

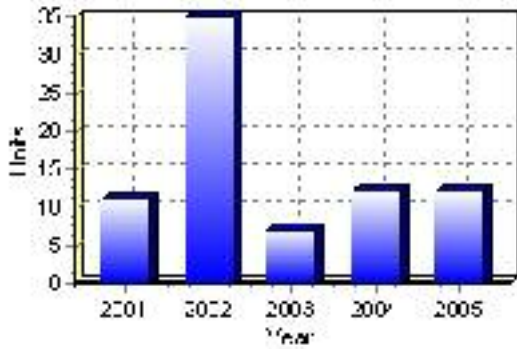
---

# Building Permits

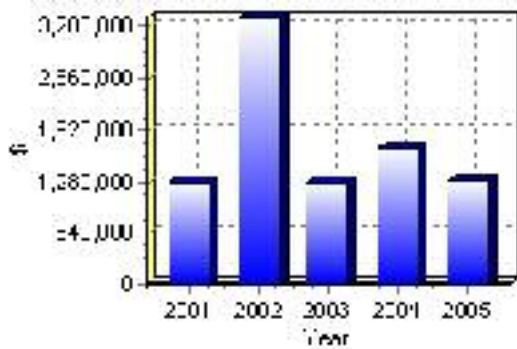
Total Building Permit Values	2001	2002	2003	2004	2005
Building Permits Value, Commercial	\$369,000	\$325,000	\$70,000	\$30,000	\$130,000
Building Permits Value, Industrial	\$0	\$0	\$150,000	\$0	\$0
Building Permits Value, Institutional	\$14,000	\$0	\$0	\$11,000	\$0
Building Permits Value, Residential	\$890,000	\$2,986,000	\$1,040,000	\$1,653,000	\$1,169,000
Building Permits Value, Total	\$1,273,000	\$3,311,000	\$1,260,000	\$1,694,000	\$1,299,000
Total Housing Starts	11	35	7	12	12

Source: Statistics Canada 2000-2004 Building Permits (numbers may not add up due to rounding)

## Total Housing Starts



## Value of Building Permits





## Dwellings

<b>Occupied Private Dwellings by Type</b>	<b>1996</b>	<b>% of total</b>	<b>2001</b>	<b>% of total</b>
Apartments	15	2.36%	25	3.55%
Detached Duplexes	0	0.00%	0	0.00%
Movable Dwellings	90	14.17%	35	4.96%
Other single attached house	0	0.00%	0	0.00%
Row and semi-detached house	20	3.15%	20	2.84%
Single-detached house	505	79.53%	630	89.36%
Total number of occupied private dwellings	635	100.00%	705	100.00%
Private dwellings, owned	480	75.59%	530	75.18%
Private Dwellings, rented	155	24.41%	175	24.82%

Source: Statistics Canada 1996 & 2001 Census (numbers may not add up due to rounding)

<b>Private Dwellings by Period of Construction</b>	<b># of Dwellings</b>	<b>% of total</b>
Period of construction, before 1946	60	8.63%
Period of construction, 1946 - 1960	40	5.76%
Period of construction, 1961 - 1970	50	7.19%
Period of construction, 1971 - 1980	245	35.25%
Period of construction, 1981 - 1990	125	17.99%
Period of construction, 1991 - 2001	175	25.18%
Total number of private dwellings constructed	695	100.00%

Source: Statistics Canada 2001 Census (numbers may not add up due to rounding)

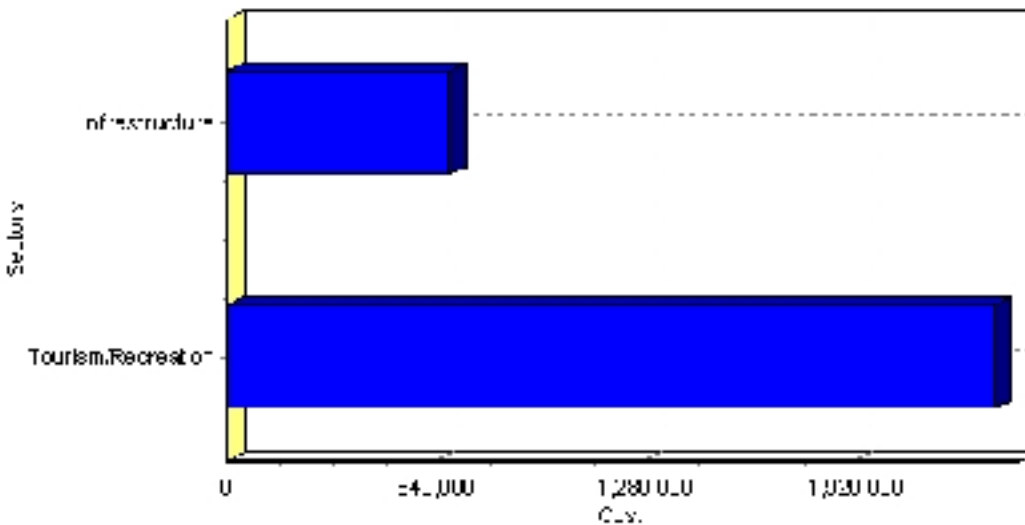
# Projects

## Summary of Projects in Millet as of September 2006

Project Sector	Number of Projects	Project Cost
Tourism/Recreation	2	\$2,345,000
Infrastructure	2	\$682,320
Total	4	\$3,027,320

This inventory lists projects in Alberta that have recently been completed, are under construction, or are proposed to start construction. Not all projects are listed due to reasons of confidentiality and/or due to information not being available at the time of printing. Project data is obtained from public information sources, where possible, this data has been verified with the project proponent/developer, users of the Inventory may wish to confirm project data with the proponent/developer. The inventory does not breakdown project expenditures by any given year. The cost of a project is the value of expenditures expected over all phases of project construction, which may span over two or more years. Cost of projects listed in the Inventory are estimated values only. Source: Alberta Economic Development, 2004.

## Value of Projects by Sector (as of September 2006)



Project Status	Number of Projects	Project Cost
Announced	2	\$577,320
Proposed	1	\$2,000,000
Under Construction	1	\$450,000
Total	4	\$3,027,320

This inventory lists projects in Alberta that have recently been completed, are under construction, or are proposed to start construction. Not all projects are listed due to reasons of confidentiality and/or due to information not being available at the time of printing. Project data is obtained from public information sources, where possible, this data has been verified with the project proponent/developer, users of the Inventory may wish to confirm project data with the proponent/developer. The inventory does not breakdown project expenditures by any given year. The cost of a project is the value of expenditures expected over all phases of project construction, which may span over two or more years. Cost of projects listed in the Inventory are estimated values only. Source: Alberta Economic Development, 2004.

## Largest Projects in Millet as of September 2006

Company Name	Project Description	Project Location	Project Cost	Construction Schedule	Status
Millet and District Recreational and Agricultural Society	Millet Agriplex Addition	Millet	\$2,000,000	-	Proposed
Town of Millet	48 Avenue - Sidewalk Repair	Millet	\$450,000	2006-2006	Under Construction
Millet and District Lions Club	NEW CAMPGROUND & RV PARK	Millet	\$345,000	2006-2007	Announced
Transport Canada	RAILWAY CROSSING IMPROVEMENTS	Millet	\$232,320	2006-2007	Announced

Disclaimer: Information in this profile has been provided from a variety of external sources. Although every effort has been made to ensure the accuracy, currency and reliability of the content and data, AlbertaFirst.com Ltd. accepts no responsibility in this regard.

© AlbertaFirst.com Ltd., 2006.