

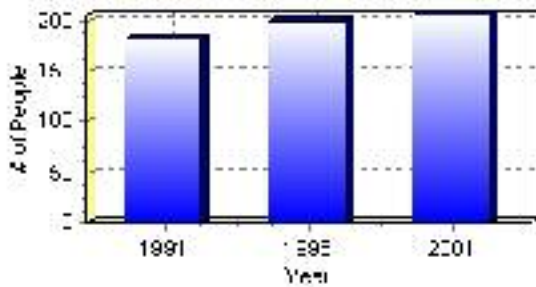
## Population

### Total Population

Population 2004*	205
Population 2003*	205
Population 2002*	205
Population 2001**	205
Population 2000*	199
Population 1996**	199
Population 1991**	182
Population % change 1991-1996	8.54%
Population % change 1996-2001	2.93%

\* Source: Official Population List, Alberta Municipal Affairs  
\*\* Source: Statistics Canada 1991, 1996, & 2001 Census

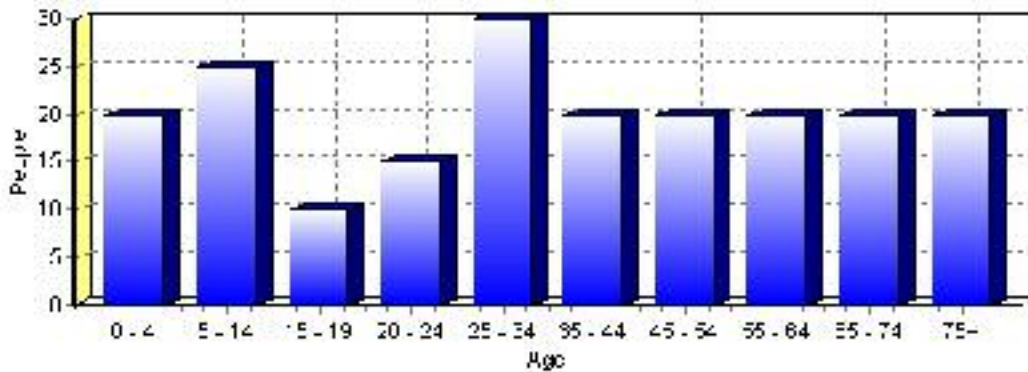
### Total Population 1991-2001



Population by Age and Gender	1996 Male	1996 Female	1996 Total	2001 Male	2001 Female	2001 Total
Age 0 - 4	10	5	15	10	10	20
Age 5 - 14	20	5	25	15	10	25
Age 15 - 19	5	5	10	10	0	10
Age 20 - 24	10	10	20	5	10	15
Age 25 - 34	15	10	25	10	20	30
Age 35 - 44	15	15	30	10	10	20
Age 45 - 54	5	10	15	10	10	20
Age 55 - 64	10	10	20	5	15	20
Age 65 - 74	10	10	20	15	5	20
Age 75 and older	10	15	25	5	15	20
Total All Persons	110	90	200	105	100	205

Source: Statistics Canada 1996 & 2001 Census (numbers may not add up due to rounding)

### Czar Population by Age Group (2001)

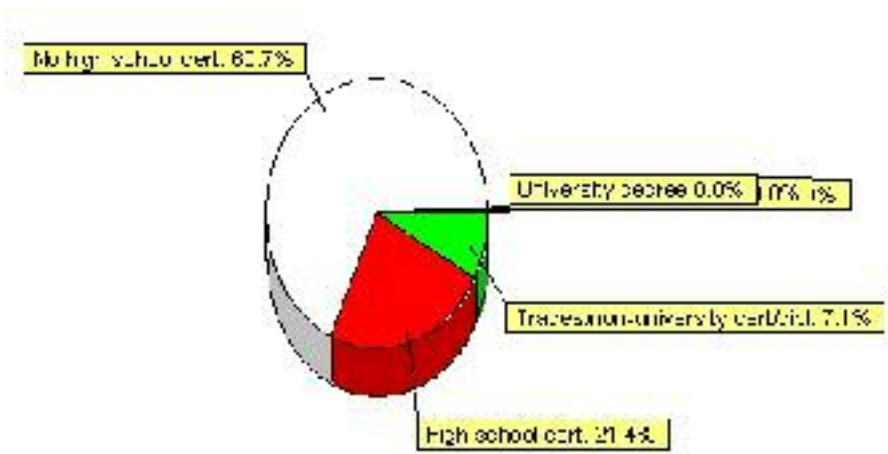


# Education Statistics

Highest level of schooling for Population 20yrs and older	2001	%
People without high school certificates	85	60.71%
People with high school certificates	30	21.43%
People with trades or non-university certificate or diploma	10	7.14%
People with post-secondary education (not completed)	0	0.00%
People with university diploma/certificate	0	0.00%
People with university degree	0	0.00%
Total Population 20 years and older	140	100.00%

Source: Statistics Canada 2001 Census (numbers may not add up due to rounding)

## Czar Highest Level of Schooling 2001



Population with Post Secondary Qualifications	1996	%	2001	%
Agriculture and biological sciences	0	0.00%	0	0.00%
Commerce, management and business administration	30	35.29%	10	50.00%
Educational, recreational and counseling services	0	0.00%	0	0.00%
Engineering and applied science tech. and trades	25	29.41%	10	50.00%
Engineering and applied sciences	0	0.00%	0	0.00%
Fine and applied arts	10	11.76%	0	0.00%
Health professionals, science and technologies	10	11.76%	0	0.00%
Humanities and related fields	10	11.76%	0	0.00%
Mathematics and physical sciences	0	0.00%	0	0.00%
Social sciences and related fields	0	0.00%	0	0.00%
Other and/or no specialization	0	0.00%	0	0.00%
Total people with post secondary qualifications	85	100.00%	20	100.00%
Females with post-secondary qualifications	40	47.06%	10	50.00%
Males with post-secondary qualifications	45	52.94%	10	50.00%

Source: Statistics Canada 1996 & 2001 Census (numbers may not add up due to rounding)

## Labour Force

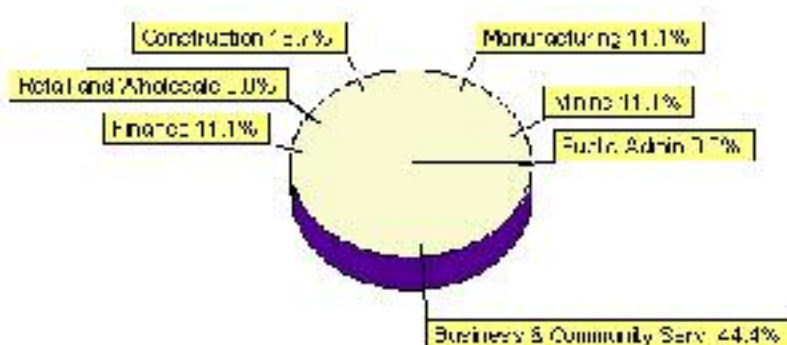
Labour force by activity	1996	2001
In the labour force, both sexes	95	90
Not in the labour force, both sexes	65	65
Total population 15 and over	160	150
Employed, both sexes	90	75
Unemployed, both sexes	0	10
Participation rate, both sexes	59.00%	60.00%
Unemployment rate, both sexes	0.00%	11.00%

Source: Statistics Canada 1996 & 2001 Census (numbers may not add up due to rounding)

Labour Force by Industry Division	1996	% of total	2001	% of total
Agriculture	10	11.11%	0	0.00%
Mining	10	11.11%	10	11.11%
Manufacturing	0	0.00%	10	11.11%
Construction	15	16.67%	15	16.67%
Transportation. & Utilities	0	0.00%	0	0.00%
Retail and Wholesale	35	38.89%	0	0.00%
Finance	0	0.00%	10	11.11%
Business & Community Services	30	33.33%	40	44.44%
Public Administration	10	11.11%	0	0.00%
Total All Industries	90	100.00%	90	100.00%

Source: Statistics Canada 1996 & 2001 Census (numbers may not add up due to rounding)

### Czar Labour Force By Industry - 2001



Labour Force by Major Occupational Groups	1996	%	2001	%
Management occupations	30	33.33%	0	0.00%
Business, Finances and administrative occupations	0	0.00%	10	11.76%
Natural and applied sciences and related occupations	0	0.00%	0	0.00%
Health occupations	10	11.11%	0	0.00%
Occupations in social science; education; government and religion	0	0.00%	0	0.00%
Occupations in art; culture; recreation and sport	0	0.00%	0	0.00%

Sales and service occupations	0	0.00%	25	29.41%
Trades; transport; equipment operators and related occupations	25	27.78%	25	29.41%
Occupations unique to primary industry	10	11.11%	10	11.76%
Occupations unique to processing; manufacturing and utilities	0	0.00%	15	17.65%
Occupations not elsewhere classified	0	0.00%	0	0.00%
Total - All Occupations (major groups)	90	100.00%	85	100.00%
Females - All Occupations	35	38.89%	35	41.18%
Males - All Occupations	55	61.11%	50	58.82%

Source: Statistics Canada 1996 & 2001 Census (numbers may not add up due to rounding)

---

## Dwellings

<b>Occupied Private Dwellings by Type</b>	<b>1996</b>	<b>% of total</b>	<b>2001</b>	<b>% of total</b>
Apartments	0	0.00%	5	5.88%
Detached Duplexes	0	0.00%	0	0.00%
Movable Dwellings	20	22.22%	10	11.76%
Other single attached house	0	0.00%	0	0.00%
Row and semi-detached house	0	0.00%	5	5.88%
Single-detached house	65	72.22%	70	82.35%
Total number of occupied private dwellings	90	100.00%	85	100.00%
Private dwellings, owned	65	72.22%	70	82.35%
Private Dwellings, rented	25	27.78%	15	17.65%

Source: Statistics Canada 1996 & 2001 Census (numbers may not add up due to rounding)

<b>Private Dwellings by Period of Construction</b>	<b># of Dwellings</b>	<b>% of total</b>
Period of construction, before 1946	30	33.33%
Period of construction, 1946 - 1960	10	11.11%
Period of construction, 1961 - 1970	15	16.67%
Period of construction, 1971 - 1980	0	0.00%
Period of construction, 1981 - 1990	25	27.78%
Period of construction, 1991 - 2001	10	11.11%
Total number of private dwellings constructed	90	100.00%

Source: Statistics Canada 2001 Census (numbers may not add up due to rounding)

Disclaimer: Information in this profile has been provided from a variety of external sources. Although every effort has been made to ensure the accuracy, currency and reliability of the content and data, AlbertaFirst.com Ltd. accepts no responsibility in this regard.

© AlbertaFirst.com Ltd., 2006.