

Thorhild No. 7, County of

Population

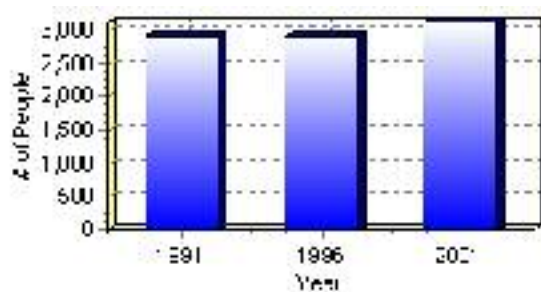
Total Population

Population 2004*	3,120
Population 2003*	3,120
Population 2002*	3,120
Population 2001**	3,120
Population 2000*	3,077
Population 1996**	2,901
Population 1991**	2,912
Population % change 1991-1996	-0.38%
Population % change 1996-2001	7.02%

* Source: Official Population List, Alberta Municipal Affairs

** Source: Statistics Canada 1991, 1996, & 2001 Census

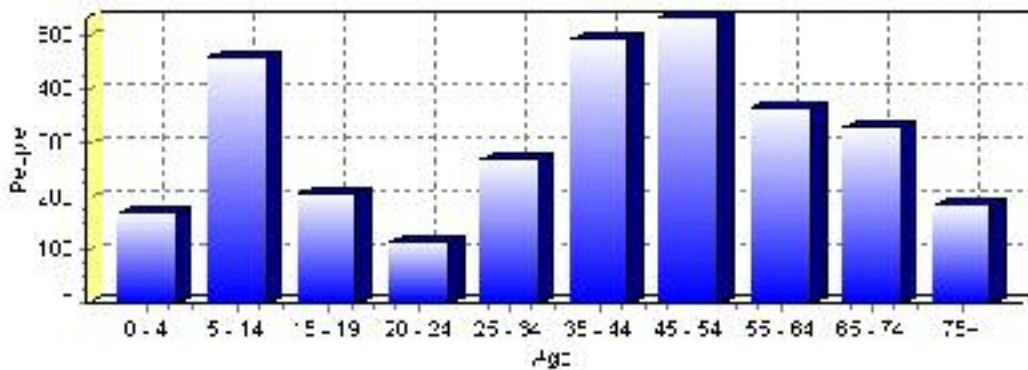
Total Population 1991-2001



Population by Age and Gender	1996 Male	1996 Female	1996 Total	2001 Male	2001 Female	2001 Total
Age 0 - 4	90	80	170	95	75	170
Age 5 - 14	240	200	440	250	210	460
Age 15 - 19	125	90	215	105	100	205
Age 20 - 24	65	45	110	70	45	115
Age 25 - 34	170	150	320	120	150	270
Age 35 - 44	265	235	500	270	225	495
Age 45 - 54	200	180	380	290	245	535
Age 55 - 64	205	180	385	195	170	365
Age 65 - 74	185	110	295	190	140	330
Age 75 and older	60	55	115	95	90	185
Total All Persons	1,585	1,315	2,900	1,675	1,445	3,120

Source: Statistics Canada 1996 & 2001 Census (numbers may not add up due to rounding)

Thorhild No. 7, County of Population by Age Group (2001)

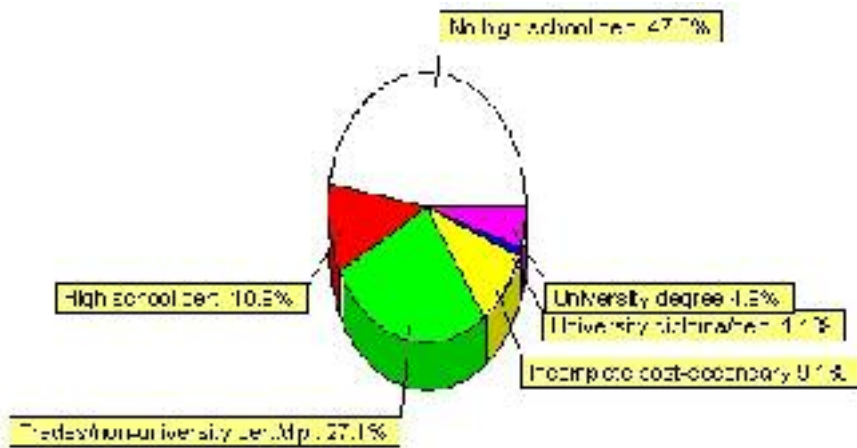


Education Statistics

Highest level of schooling for Population 20yrs and older	2001	%
People without high school certificates	1,060	47.01%
People with high school certificates	245	10.86%
People with trades or non-university certificate or diploma	610	27.05%
People with post-secondary education (not completed)	205	9.09%
People with university diploma/certificate	25	1.11%
People with university degree	110	4.88%
Total Population 20 years and older	2,255	100.00%

Source: Statistics Canada 2001 Census (numbers may not add up due to rounding)

Thorhild No. 7, County of Highest Level of Schooling 2001



Population with Post Secondary Qualifications	1996	%	2001	%
Agriculture and biological sciences	75	14.02%	65	8.78%
Commerce, management and business administration	75	14.02%	105	14.19%
Educational, recreational and counseling services	65	12.15%	90	12.16%
Engineering and applied science tech. and trades	240	44.86%	320	43.24%
Engineering and applied sciences	10	1.87%	0	0.00%
Fine and applied arts	25	4.67%	50	6.76%
Health professionals, science and technologies	50	9.35%	55	7.43%
Humanities and related fields	0	0.00%	15	2.03%
Mathematics and physical sciences	0	0.00%	0	0.00%
Social sciences and related fields	20	3.74%	35	4.73%
Other and/or no specialization	0	0.00%	0	0.00%
Total people with post secondary qualifications	535	100.00%	740	100.00%
Females with post-secondary qualifications	230	42.99%	310	41.89%
Males with post-secondary qualifications	305	57.01%	430	58.11%

Source: Statistics Canada 1996 & 2001 Census (numbers may not add up due to rounding)

Labour Force

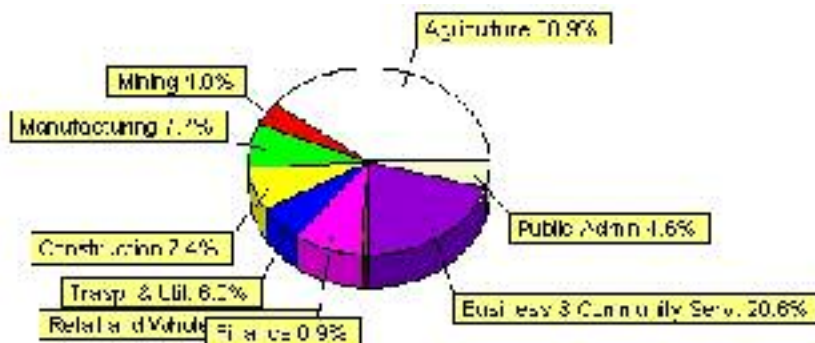
Labour force by activity	1996	2001
In the labour force, both sexes	1,695	1,760
Not in the labour force, both sexes	600	710
Total population 15 and over	2,300	2,465
Employed, both sexes	1,590	1,700
Unemployed, both sexes	105	55
Participation rate, both sexes	73.00%	71.00%
Unemployment rate, both sexes	6.00%	3.00%

Source: Statistics Canada 1996 & 2001 Census (numbers may not add up due to rounding)

Labour Force by Industry Division	1996	% of total	2001	% of total
Agriculture	750	44.78%	680	38.86%
Mining	80	4.78%	70	4.00%
Manufacturing	85	5.07%	135	7.71%
Construction	95	5.67%	130	7.43%
Transportation. & Utilities	90	5.37%	105	6.00%
Retail and Wholesale	180	10.75%	155	8.86%
Finance	60	3.58%	15	0.86%
Business & Community Services	290	17.31%	360	20.57%
Public Administration	50	2.99%	80	4.57%
Total All Industries	1,675	100.00%	1,750	100.00%

Source: Statistics Canada 1996 & 2001 Census (numbers may not add up due to rounding)

Thorhild No. 7, County of Labour Force By Industry - 2001



Labour Force by Major Occupational Groups	1996	%	2001	%
Management occupations	55	3.28%	90	5.14%
Business, Finances and administrative occupations	170	10.15%	215	12.29%
Natural and applied sciences and related occupations	10	0.60%	10	0.57%
Health occupations	50	2.99%	35	2.00%
Occupations in social science; education; government and religion	40	2.39%	80	4.57%
Occupations in art; culture; recreation and sport	0	0.00%	0	0.00%

Sales and service occupations	310	18.51%	245	14.00%
Trades; transport; equipment operators and related occupations	270	16.12%	380	21.71%
Occupations unique to primary industry	725	43.28%	655	37.43%
Occupations unique to processing; manufacturing and utilities	45	2.69%	40	2.29%
Occupations not elsewhere classified	20	1.19%	10	0.57%
Total - All Occupations (major groups)	1,675	100.00%	1,750	100.00%
Females - All Occupations	670	40.00%	690	39.43%
Males - All Occupations	1,005	60.00%	1,055	60.29%

Source: Statistics Canada 1996 & 2001 Census (numbers may not add up due to rounding)

Income

Family Income (Number of Families)	1996	%	2001	%
less than \$19,999	145	18.71%	85	10.12%
\$20,000 - \$39,999	290	37.42%	290	34.52%
\$40,000 - \$59,999	200	25.81%	265	31.55%
\$60,000 and over	140	18.06%	215	25.60%
Total number of families	775	100.00%	855	101.79%
Average family income	\$46,515		\$53,737	
Median family income	\$36,634		\$46,092	

Source: Statistics Canada 1996 & 2001 Census (numbers may not add up due to rounding)

Household Income (Number of Households)	1996	%	2001	%
less than \$19,999	325	30.23%	240	20.34%
\$20,000 - \$39,999	350	32.56%	335	28.39%
\$40,000 - \$59,999	245	22.79%	290	24.58%
\$60,000 and over	40	3.72%	315	26.69%
Total number of households	1,075	100.00%	1,180	100.00%
Average household income	\$40,266		\$48,117	
Median household income	\$29,629		\$42,502	

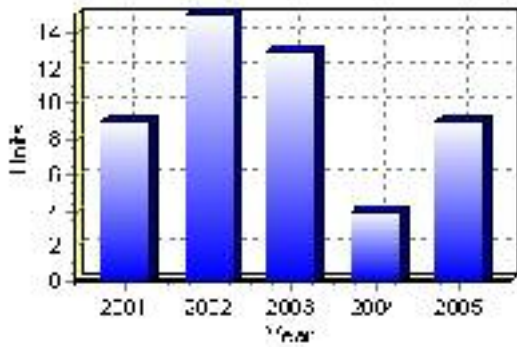
Source: Statistics Canada 1996 & 2001 Census (numbers may not add up due to rounding)

Building Permits

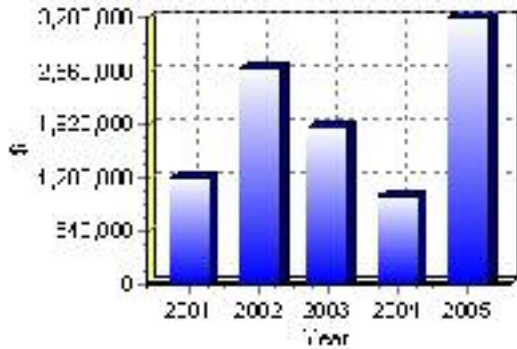
Total Building Permit Values	2001	2002	2003	2004	2005
Building Permits Value, Commercial	\$8,000	\$60,000	\$0	\$50,000	\$0
Building Permits Value, Industrial	\$0	\$0	\$0	\$0	\$0
Building Permits Value, Institutional	\$0	\$365,000	\$0	\$150,000	\$994,000
Building Permits Value, Residential	\$1,274,000	\$2,186,000	\$1,885,000	\$865,000	\$2,212,000
Building Permits Value, Total	\$1,282,000	\$2,611,000	\$1,885,000	\$1,065,000	\$3,206,000
Total Housing Starts	9	15	13	4	9

Source: Statistics Canada 2000-2004 Building Permits (numbers may not add up due to rounding)

Total Housing Starts



Value of Building Permits



Dwellings

Occupied Private Dwellings by Type	1996	% of total	2001	% of total
Apartments	10	0.93%	0	0.00%
Detached Duplexes	0	0.00%	0	0.00%
Movable Dwellings	85	7.91%	145	12.29%
Other single attached house	0	0.00%	20	1.69%
Row and semi-detached house	0	0.00%	15	1.27%
Single-detached house	985	91.63%	1,000	84.75%
Total number of occupied private dwellings	1,075	100.00%	1,180	100.00%
Private dwellings, owned	945	87.91%	1,045	88.56%
Private Dwellings, rented	130	12.09%	135	11.44%

Source: Statistics Canada 1996 & 2001 Census (numbers may not add up due to rounding)

Private Dwellings by Period of Construction	# of Dwellings	% of total
Period of construction, before 1946	175	14.83%
Period of construction, 1946 - 1960	215	18.22%
Period of construction, 1961 - 1970	180	15.25%
Period of construction, 1971 - 1980	290	24.58%
Period of construction, 1981 - 1990	170	14.41%
Period of construction, 1991 - 2001	150	12.71%
Total number of private dwellings constructed	1,180	100.00%

Source: Statistics Canada 2001 Census (numbers may not add up due to rounding)

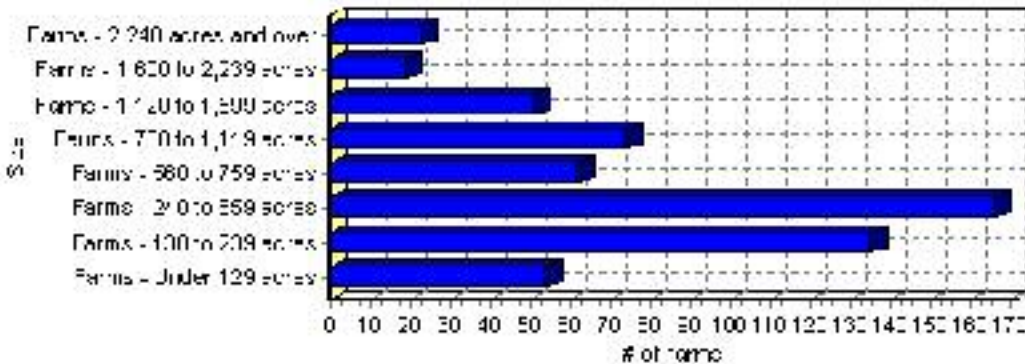
Farming

Thorhild No. 7, County of Total Farm Area : 585 acres

Farms by Total Farm Area (2001)	# of Farms	% of total
Farms - Under 129 acres	54	9.25%
Farms - 130 to 239 acres	135	23.12%
Farms - 240 to 559 acres	166	28.42%
Farms - 560 to 759 acres	62	10.62%
Farms - 760 to 1,119 acres	74	12.67%
Farms - 1,120 to 1,599 acres	51	8.73%
Farms - 1,600 to 2,239 acres	19	3.25%
Farms - 2,240 acres and over	23	3.94%
Total number of farms reporting	584	100.00%

Source: Statistics Canada 2001 Census of Agriculture(numbers may not add up due to rounding)

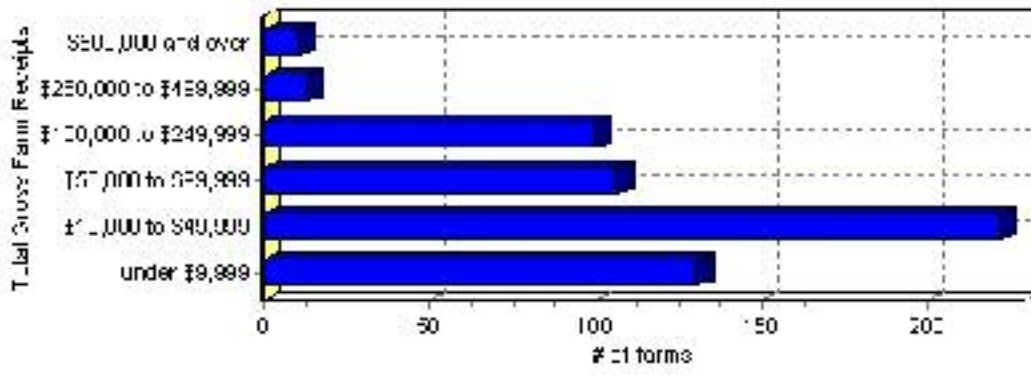
of Farms by Total Farm Area



Farms by Total Gross Farm Receipts - 2001	# of Farms	% of total
Farms gross farm receipts - under \$9,999	131	22.43%
Farms gross farm receipts - \$10,000 to \$49,999	222	38.01%
Farms gross farm receipts - \$50,000 to \$99,999	107	18.32%
Farms gross farm receipts - \$100,000 to \$249,999	100	17.12%
Farms gross farm receipts - \$250,000 to \$499,999	13	2.23%
Farms gross farm receipts - \$500,000 and over	11	1.88%
Total number of farms reporting	584	100.00%

Source: Statistics Canada 2001 Census of Agriculture(numbers may not add up due to rounding)

Total Gross Farm Receipts

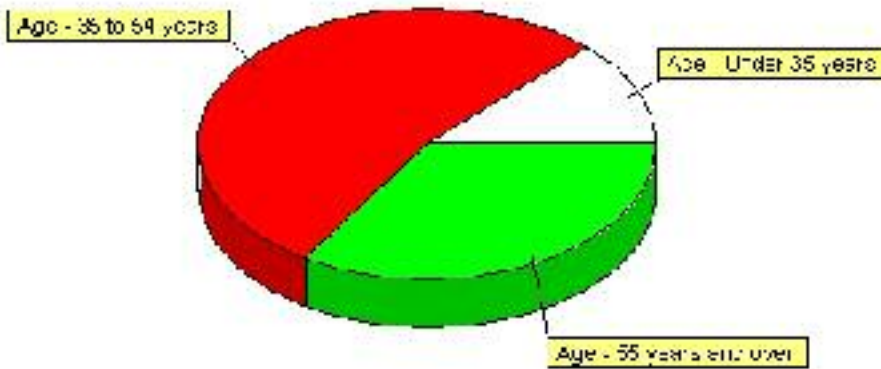


Farming, Continued

Characteristics of Farm Operators	#	%
Age - Under 35 years	105	12.73%
Age - 35 to 54 years	440	53.33%
Age - 55 years and over	280	33.94%
Average age of operators	49	
Number of operators - Female	230	27.88%
Number of operators - Male	600	72.73%
Total number of operators reporting	825	100.00%

Source: Statistics Canada 2001 Census of Agriculture(numbers may not add up due to rounding)

Age of Farm Operators



Disclaimer: Information in this profile has been provided from a variety of external sources. Although every effort has been made to ensure the accuracy, currency and reliability of the content and data, AlbertaFirst.com Ltd. accepts no responsibility in this regard.

© AlbertaFirst.com Ltd., 2006.