

# Magrath

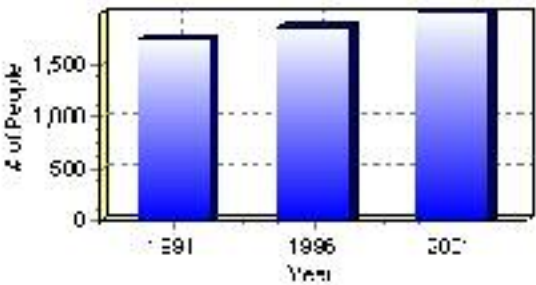
## Population

### Total Population

Population 2004*	1,993
Population 2003*	1,993
Population 2002*	1,993
Population 2001**	1,995
Population 2000*	1,867
Population 1996**	1,867
Population 1991**	1,743
Population % change 1991-1996	6.64%
Population % change 1996-2001	6.32%

\* Source: Official Population List, Alberta Municipal Affairs  
\*\* Source: Statistics Canada 1991, 1996, & 2001 Census

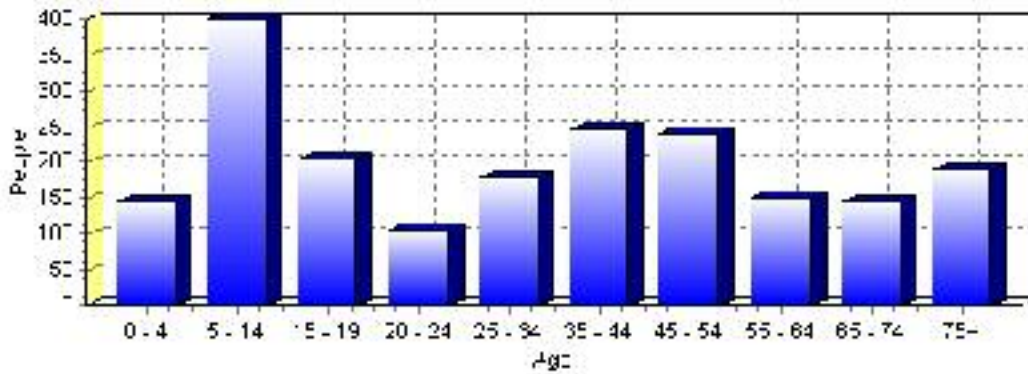
### Total Population 1991-2001



Population by Age and Gender	1996 Male	1996 Female	1996 Total	2001 Male	2001 Female	2001 Total
Age 0 - 4	70	65	135	55	90	145
Age 5 - 14	200	200	400	195	205	400
Age 15 - 19	85	110	195	105	100	205
Age 20 - 24	60	50	110	60	45	105
Age 25 - 34	95	80	175	85	95	180
Age 35 - 44	115	120	235	110	135	245
Age 45 - 54	85	100	185	120	120	240
Age 55 - 64	70	75	145	70	80	150
Age 65 - 74	70	70	140	80	65	145
Age 75 and older	65	90	155	70	120	190
Total All Persons	900	970	1,870	955	1,035	1,990

Source: Statistics Canada 1996 & 2001 Census (numbers may not add up due to rounding)

### Magrath Population by Age Group (2001)

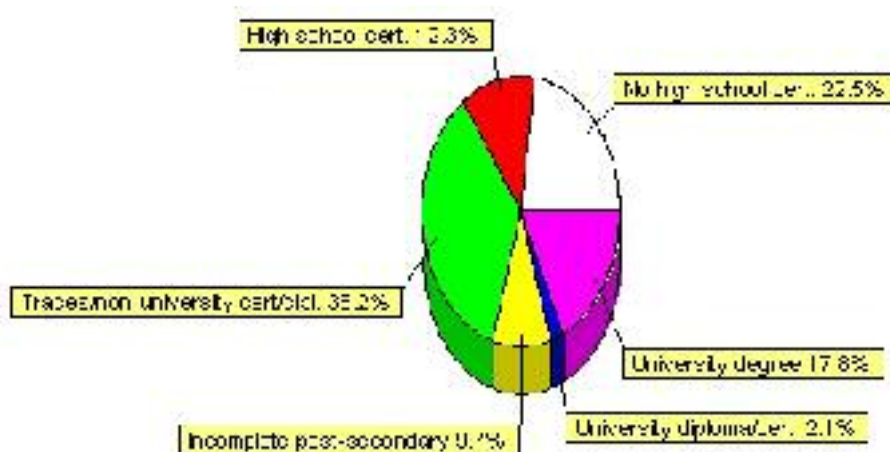


## Education Statistics

Highest level of schooling for Population 20yrs and older	2001	%
People without high school certificates	265	22.46%
People with high school certificates	145	12.29%
People with trades or non-university certificate or diploma	415	35.17%
People with post-secondary education (not completed)	115	9.75%
People with university diploma/certificate	25	2.12%
People with university degree	210	17.80%
Total Population 20 years and older	1,180	100.00%

Source: Statistics Canada 2001 Census (numbers may not add up due to rounding)

### Magrath Highest Level of Schooling 2001



Population with Post Secondary Qualifications	1996	%	2001	%
Agriculture and biological sciences	30	5.66%	70	10.85%
Commerce, management and business administration	110	20.75%	110	17.05%
Educational, recreational and counseling services	90	16.98%	90	13.95%
Engineering and applied science tech. and trades	100	18.87%	115	17.83%
Engineering and applied sciences	10	1.89%	20	3.10%
Fine and applied arts	60	11.32%	35	5.43%
Health professionals, science and technologies	100	18.87%	160	24.81%
Humanities and related fields	10	1.89%	25	3.88%
Mathematics and physical sciences	0	0.00%	25	3.88%
Social sciences and related fields	30	5.66%	25	3.88%
Other and/or no specialization	0	0.00%	0	0.00%
Total people with post secondary qualifications	530	100.00%	645	100.00%
Females with post-secondary qualifications	285	53.77%	350	54.26%
Males with post-secondary qualifications	245	46.23%	295	45.74%

Source: Statistics Canada 1996 & 2001 Census (numbers may not add up due to rounding)

## Labour Force

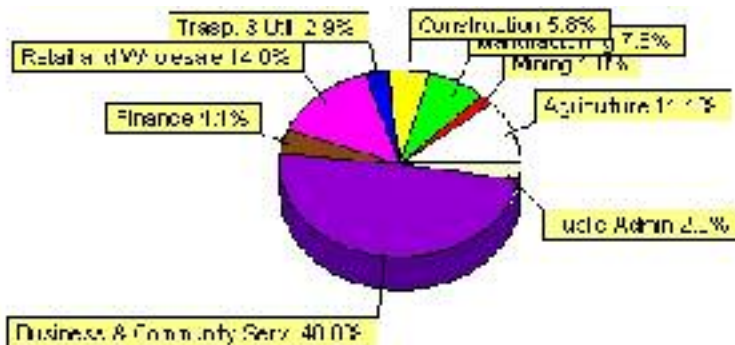
Labour force by activity	1996	2001
In the labour force, both sexes	785	880
Not in the labour force, both sexes	505	515
Total population 15 and over	1,290	1,395
Employed, both sexes	750	820
Unemployed, both sexes	35	55
Participation rate, both sexes	60.00%	63.00%
Unemployment rate, both sexes	4.00%	6.00%

Source: Statistics Canada 1996 & 2001 Census (numbers may not add up due to rounding)

Labour Force by Industry Division	1996	% of total	2001	% of total
Agriculture	60	7.64%	95	11.11%
Mining	0	0.00%	15	1.75%
Manufacturing	70	8.92%	65	7.60%
Construction	35	4.46%	50	5.85%
Transportation. & Utilities	35	4.46%	25	2.92%
Retail and Wholesale	140	17.83%	120	14.04%
Finance	40	5.10%	35	4.09%
Business & Community Services	320	40.76%	410	47.95%
Public Administration	30	3.82%	25	2.92%
Total All Industries	785	100.00%	855	100.00%

Source: Statistics Canada 1996 & 2001 Census (numbers may not add up due to rounding)

### Magrath Labour Force By Industry - 2001



Labour Force by Major Occupational Groups	1996	%	2001	%
Management occupations	70	8.97%	75	8.77%
Business, Finances and administrative occupations	120	15.38%	75	8.77%
Natural and applied sciences and related occupations	15	1.92%	45	5.26%
Health occupations	70	8.97%	95	11.11%
Occupations in social science; education; government and religion	75	9.62%	90	10.53%
Occupations in art; culture; recreation and sport	10	1.28%	40	4.68%

Sales and service occupations	200	25.64%	130	15.20%
Trades; transport; equipment operators and related occupations	105	13.46%	125	14.62%
Occupations unique to primary industry	95	12.18%	120	14.04%
Occupations unique to processing; manufacturing and utilities	30	3.85%	55	6.43%
Occupations not elsewhere classified	10	1.28%	25	2.92%
Total - All Occupations (major groups)	780	100.00%	855	100.00%
Females - All Occupations	340	43.59%	360	42.11%
Males - All Occupations	440	56.41%	500	58.48%

Source: Statistics Canada 1996 & 2001 Census (numbers may not add up due to rounding)

---

## Income

<b>Family Income (Number of Families)</b>	<b>1996</b>	<b>%</b>	<b>2001</b>	<b>%</b>
less than \$19,999	45	10.59%	60	13.64%
\$20,000 - \$39,999	185	43.53%	90	20.45%
\$40,000 - \$59,999	80	18.82%	210	47.73%
\$60,000 and over	115	27.06%	80	18.18%
Total number of families	425	100.00%	440	100.00%
Average family income	\$49,250		\$52,550	
Median family income	\$38,439		\$45,662	

Source: Statistics Canada 1996 & 2001 Census (numbers may not add up due to rounding)

<b>Household Income (Number of Households)</b>	<b>1996</b>	<b>%</b>	<b>2001</b>	<b>%</b>
less than \$19,999	110	19.47%	105	17.07%
\$20,000 - \$39,999	245	43.36%	155	25.20%
\$40,000 - \$59,999	85	15.04%	215	34.96%
\$60,000 and over	35	6.19%	145	23.58%
Total number of households	565	100.00%	615	100.00%
Average household income	\$43,993		\$47,960	
Median household income	\$33,396		\$44,060	

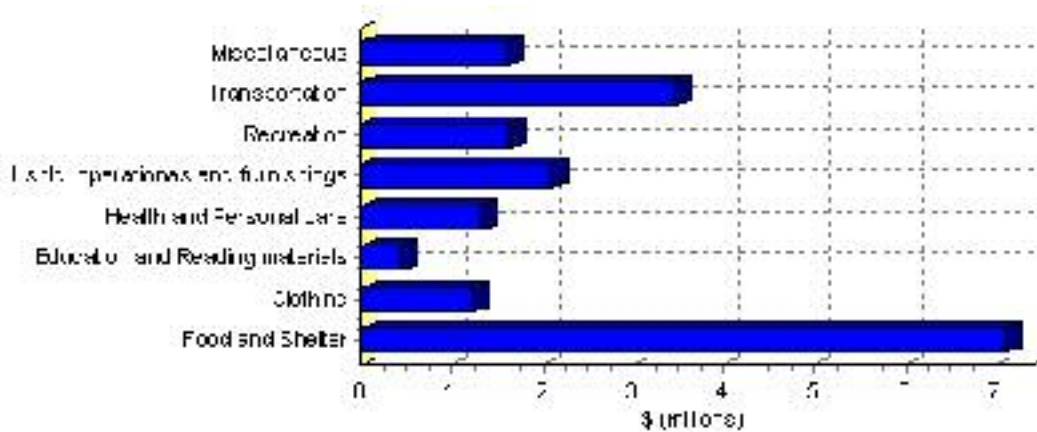
Source: Statistics Canada 1996 & 2001 Census (numbers may not add up due to rounding)

# Family Expenditure

Expenditure Category	1992	% of total	1996	% of total
Food and Shelter	\$5,596,325	37.22%	\$7,113,381	37.62%
Clothing	\$1,020,525	6.79%	\$1,244,808	6.58%
Education and Reading materials	\$307,780	2.05%	\$435,155	2.30%
Health and Personal care	\$941,170	6.26%	\$1,320,646	6.98%
Hshld. operations and furnishings	\$1,648,120	10.96%	\$2,091,081	11.06%
Recreation	\$1,199,645	7.98%	\$1,629,846	8.62%
Transportation	\$3,098,770	20.61%	\$3,464,727	18.32%
Miscellaneous	\$1,220,220	8.11%	\$1,609,511	8.51%
Total Current Consumption	\$15,037,375	100.00%	\$18,909,155	100.00%
Total # of Households	515		566	
Average Consumption per Household	\$29,199		\$33,408	

Source: Statistics Canada Family Expenditure Survey 1992 & 1996 (numbers may not add up due to rounding).

## Magrath Family Expenditures (1996)

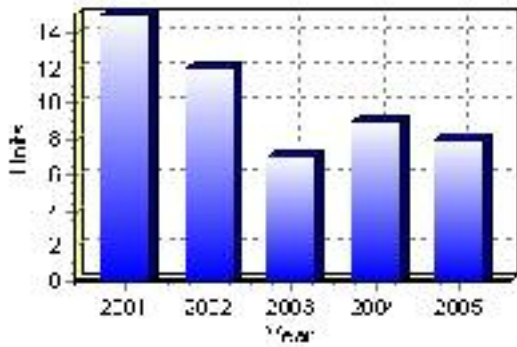


# Building Permits

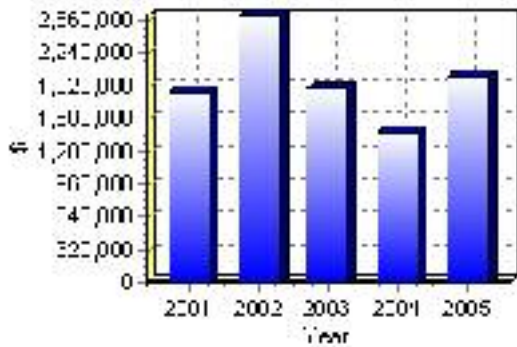
Total Building Permit Values	2001	2002	2003	2004	2005
Building Permits Value, Commercial	\$50,000	\$245,000	\$219,000	\$5,000	\$0
Building Permits Value, Industrial	\$0	\$476,000	\$350,000	\$0	\$0
Building Permits Value, Institutional	\$0	\$53,000	\$39,000	\$0	\$0
Building Permits Value, Residential	\$1,813,000	\$1,827,000	\$1,289,000	\$1,454,000	\$2,017,000
Building Permits Value, Total	\$1,863,000	\$2,601,000	\$1,897,000	\$1,459,000	\$2,017,000
Total Housing Starts	15	12	7	9	8

Source: Statistics Canada 2000-2004 Building Permits (numbers may not add up due to rounding)

## Total Housing Starts



## Value of Building Permits





## Dwellings

<b>Occupied Private Dwellings by Type</b>	<b>1996</b>	<b>% of total</b>	<b>2001</b>	<b>% of total</b>
Apartments	0	0.00%	20	3.23%
Detached Duplexes	20	3.54%	15	2.42%
Movable Dwellings	15	2.65%	30	4.84%
Other single attached house	0	0.00%	0	0.00%
Row and semi-detached house	10	1.77%	15	2.42%
Single-detached house	525	92.92%	545	87.90%
Total number of occupied private dwellings	565	100.00%	620	100.00%
Private dwellings, owned	480	84.96%	520	83.87%
Private Dwellings, rented	85	15.04%	95	15.32%

Source: Statistics Canada 1996 & 2001 Census (numbers may not add up due to rounding)

<b>Private Dwellings by Period of Construction</b>	<b># of Dwellings</b>	<b>% of total</b>
Period of construction, before 1946	205	33.88%
Period of construction, 1946 - 1960	75	12.40%
Period of construction, 1961 - 1970	30	4.96%
Period of construction, 1971 - 1980	115	19.01%
Period of construction, 1981 - 1990	90	14.88%
Period of construction, 1991 - 2001	90	14.88%
Total number of private dwellings constructed	605	100.00%

Source: Statistics Canada 2001 Census (numbers may not add up due to rounding)

Disclaimer: Information in this profile has been provided from a variety of external sources. Although every effort has been made to ensure the accuracy, currency and reliability of the content and data, AlbertaFirst.com Ltd. accepts no responsibility in this regard.

© AlbertaFirst.com Ltd., 2006.