

Forty Mile No. 8, County of

<http://www.40mile.ca>

Welcome

The County of Forty Mile No. 8 Council, Staff and Residents would like to extend an open invitation to all to come and experience a very tranquil way of life.

We believe the area has something to offer for everyone from the beauty of the natural landscape to accommodating various business interests.



Forty Mile Logo 3D

Area Overview

The County was formed through the amalgamation of the Municipal District of Bow Island, Municipal District of Forty Mile, and Municipal District of Burlington. It was gazetted effective January 1, 1958. The County was named after the Forty Mile Coulee located 14 miles north of Foremost.

Climate

The County lies mainly within the Dry Mixed Grass Region. At higher elevations in the southern part of the County and at higher elevations in the eastern part of the County, the Mixed Grass Region is present. The mean annual precipitation averaged from 3 meteorological stations within the County measured 344.6 millimeters based on data from 1971 to 2000. The mean annual temperature averaged 7.0C with the mean monthly temperature reaching a high of 21.1C in July and dropping to a low of -9.2C in January. The calculated annual potential evapotranspiration is 625 millimeters.

Community Lifestyle

Recreation

A number of outdoor camping and recreation facilities have been developed in and around the County providing an excellent opportunity for everyone to enjoy the breathtaking scenery the County and surrounding area has to offer.

Attractions:

- [Etzikom Museum](#)
- [Red Rock Coulee Natural Area](#)
- [Milk River Natural Area](#)
- [Kennedy Coulee Ecological Reserve](#)
- [Pakowki Lake Bird Sanctuary](#)
- [Bow Island Golf Course](#)
- [Foremost Golf Course](#)

40-Mile Park

- Water-based recreation
- Camping -Daily, monthly, yearly and long term water front leases

Golden Sheaf Park

- Water-based recreation
- Camping

There are several stocked and natural fishing lakes in the County, providing year round activity for anglers, and for the hunting enthusiast, the natural terrain is home to a variety of wildlife.

Community Organizations

Several community organizations, sports clubs and service groups are active in the County. These include but are not limited to: 4H Clubs, Ag Society, Ambulance, Baseball, Book Club, Bow Island Trap Club, C.W.L., Cadets, Chamber of Commerce, Christian Women's, Churches-many denominations, Cubs & Scouts', Curling Club, Dance Club, Elks, FCSS, Figure Skating, Fire, Fish & Game Association, Flying Club, Golden Age Club, Hockey- Minor - Men's Recreational- Old Timers', Hospital Auxiliary, Knights of Columbus, Library, Lionesses, Lions, Masons, Men's Basketball, Pathfinders, Play Group, Quilter's Guild, Riding and Roping Club, Rodeo, Royal Canadian Legion, Sage Club, Senior Citizens, Theatrical Society, TOPS, Tuff Trucks, U.C.W., Women's Institute.

You can also checkout the community profiles for [Bow Island](#) and [Foremost](#) for more information.

Newspapers

Weeklies – [County Commentator](#)
 Dailies - [Lethbridge Herald](#) and [Medicine Hat News](#)

Radio Stations:

The County receives the following local radio stations.

FM: [CBC 91.7 & 92.1](#), [BEE 93.3](#), [COUNTRY 95.5](#), [CHAT 94.5](#), [MY 96.1](#), [ROCK 106.7](#), & [THE RIVER 107.7](#)

Television Stations

The County receives Lethbridge, Medicine Hat, Calgary and Great Falls stations. Cable television is also available in a number of communities.

Internet Service Providers

[Shockware](#) and [Canopy Canada](#) currently provide high-speed wireless internet services to most County residents. Also, [TELUS](#) dialup service is available to all county residents. For high speed access where wireless is not an option satellite coverage is available.

Economic Base

The County of Forty Mile No. 8 is primarily agriculture based, with oil and gas activities scattered throughout the area. The County has a diversified agricultural economy based on ranching, dryland farming, irrigated specialty crops, and intensive livestock operations. Farm numbers have remained relatively constant at 771 with a total farm area of 7,216 sq. kms.

Economic Facts

MAJOR BUSINESS PRODUCTS/SERVICES

- Alberta Sunflower Seeds Ltd.
- Agricore United
- Parrish & Heimbecker
- EOG
- Encana

FINANCIAL INSTITUTIONS

Foremost

- Royal Bank
- Alberta Treasury Branch

Bow Island

- Alberta Treasury Branch
- Community Savings



Pivot Irrigating Field

Education

The County of Forty Mile No. 8 is part of the [Prairie Rose Regional School Division No. 8](#), headquartered in Dunmore and the [Medicine Hat Roman Catholic School Regional Division](#), headquartered in Medicine Hat. Foremost School was the recent recipient of the Overall Excellence Award for non-selective schools, an award presented by The Fraser Institute in 2004.

Public

Public Schooling is available in Foremost (K-12), Bow Island- Senator Gershaw (4-12), Bow Island Elementary (K-3), Burdett (K-9), and Manyberries (K-6)

Separate

Separate Schooling is available in BowIsland (K-12)

Private

Cherry Coulee Christian Academy - Bow Island (K-9)

Emergency Services

Fires Service

Volunteer Fire Departments are located throughout the County and serve the respective community and surrounding area.

Police Service:

The County is served by a detachment of the Royal Canadian Mounted Police with members in Foremost and Bow Island.

Ambulance Service:

9-1-1 Ambulance Service is available throughout the County.

Health Care

Health care is provided by [Palliser Health Region](#) in The County of Forty Mile No. 8. Hospital care is available at the Bow Island Health Centre. The Centre also has acute care and auxiliary wings. Senior Housing/Services are available at the Pleasant View Lodge and Pleasant View Manor located in Bow Island and Senior Housing at Fairway Manor in Foremost. Medical Clinics are also located in Foremost and Bow Island.

Key Contacts for Business Development

- [Entre-Corp](#)
- [Alberta Economic Development](#)

Municipal Contacts, last updated May 31, 2006

Main Office:

County of Forty Mile No. 8
303 Main Street
Box 160
Foremost, Alberta
T0K 0X0
Tel: 403-867-3530
Fax: 403-867-2242
E-Mail: fortymi2@fortymile.ab.ca

Lynden Hutchinson, Reeve

E-Mail: reeve@fortymile.ab.ca

Dale Brown, County Administrator

Tel Work: 403-867-3530
Fax: 403-867-2242
E-Mail: dale@fortymile.ab.ca

Keith Bodin, Municipal Supervisor

Tel Work: 403-867-3940

Cell: 403-647-7316
E-Mail: keith@fortymile.ab.ca

Jon Hood, *Agricultural Fieldman*

Tel Work: 403-867-3530
Cell: 403-647-7210
E-Mail: jon@fortymile.ab.ca

Stewart Payne, *Protective Services Officer*

Tel Work: 403-867-3530
Cell: 403-647-7674
E-Mail: stewart@fortymile.ab.ca

Provincial Contacts, (Updated May 2006)

Alberta Economic Development

109 Provincial Building
346 - 3 Street, SE
Medicine Hat, Alberta
T1A 0G7
Tel: 403-529-3630
Fax: 403-529-3140
Elvira Smid, Regional Manager
E-Mail: elvira.smid@gov.ab.ca

Gloria Filgas, Information Officer
E-Mail: gloria.filgas@gov.ab.ca

Leonard Mitzel, *Member of the Legislative Assembly (MLA)*

Cypress-Medicine Hat Constituency
423 Legislature Building
10800 - 97 Avenue
Edmonton, Alberta
T5K 2B6
Tel: 780-415-9590
Fax: 780-415-0951
Toll Free: 1-866-339-2191
E-Mail: Cypress.medicinehat@assembly.ab.ca

Medicine Hat Office

Tel: 403-528-2191
Fax: 403-528-2278

Federal Contacts,(Updated May 2006)

Monte Solberg, *Member of Parliament (MP)*

Medicine Hat Constituency
House of Commons
Ottawa, Ontario
K1A 0A6
Tel: 613-992-4516
Fax: 613-992-6181
E-Mail: Solberg.M@parl.gc.ca

Constituency Offices:

24-419 3rd Street South East
Medicine Hat, Alberta
T1A 0G9
Telephone: (403) 528-4698
Fax: (403) 528-4365

6-403 2nd Avenue West
P.O. Box 640
Brooks, Alberta
T1R 1B6
Telephone: (403) 362-7677 or 1-800-565-4694
Fax: (403) 362-7055

Location

The County of Forty Mile No. 8 is located in **Southeast Alberta** an equal distance (approx 1 hours drive) from the **City of Medicine Hat** and the **City of Lethbridge**. The County is a vast area containing 78 townships of land bordering the United States to the south and the South Saskatchewan River to the north, encompassing portions of Townships 1 to 13 and Ranges 5 to 14. Located within the County boundaries are the **Village of Foremost** and the **Town of Bow Island**. You'll find that the County is less than an hours drive from two border crossings. **Aden Border Crossing** is located within the County's boundaries and is open 9:00 a.m. till 5:00 p.m. **Coutts Border Crossing** is located 89 km (55 miles) southwest and is open 24 hours. The Village Foremost, at the center of the County is located 327 km (204 miles) from Calgary, 622 km (386 miles) from Edmonton and 2257 km (1402 miles) from Minneapolis. Also, CP Rail has a rail line crossing through the northern part of the County. The County of Forty Mile No. 8 is part of the **Palliser Economic Partnership**.

Post Secondary Education

The County of Forty Mile No. 8 residents have access to post-secondary institutions located in Lethbridge and Medicine Hat.

Lethbridge

The University of Lethbridge offers degree programs in Arts and Science, Management, Education, Fine Arts, Music and Nursing. A Master of Education and graduate programs leading to an MA or MSC are also available, as are 12 professional transfer programs in areas such as engineering, medicine and law. A Bachelor of Social Work is offered on campus by the University of Calgary.

The Lethbridge Community College offers credit and non-credit programs through four divisions: Business and Applied Arts, Community Education; Natural and Social Science; and Technology and Trades

Medicine Hat

The Medicine Hat College offers a wide variety of University transfer, diploma, certificate, trades, academic upgrading, life skills and English as a Second Language Program. Specific courses for business and industry, general interest courses and the conservatory of Music and Dance attracts a large number of participants.

Athabasca

Athabasca University Online is available to those that choose to continue their studies while pursuing a job or from the comforts of their homes.

Taxation

Mill Rates 2006

Residential

Non residential

General	8.2297	8.2297
Forty Mile Foundation	.4229	.4229
Recreation	.2217	.2217
North Forty Mile Waste Regional Waste	.0782	.0782
South Forty Waste Services Commission	.3786	.3786
Education: Public	4.9559	5.8311
Education: Separate	4.9559	5.8311

Transportation

Air Service

Two airstrips are located within the County's boundaries. They are located in Foremost and Bow Island. The nearest commercial and airfreight services are located in Lethbridge and Medicine Hat.

Rail Service

CP Rail also provides rail service in the County with a line running parallel to Highway No. 3

Highways

The County is served by two primary highways with Highway 61 crossing the southern half of the County (east to west) and Highway 3 also crossing the County from east to west in the northern portion of the County. Various Provincial Highways feed into the primary system providing good access to most areas in the County. Volker Stevin is the primary maintenance contractor for the highways. They can be reached at 1-888-VSROADS.

Bus Service

Greyhound Bus Lines provides regularly scheduled service to the Town of Bow Island and the Village of Burdett.

Courier Service

DHL
Purolator



Etikom Windmill Museum

Utilities

WATER SUPPLY

Domestic

Deep wells from 600 - 1600 feet into the Milk River Sandstone formation.

Irrigation

113,000 acres of irrigation in the County of which 106,000 is served by the St. Mary River Irrigation District. The remaining 7000 acres is made up of river users and spring flooding in the Orion and Manyberries area.

The Forty Mile Reservoir is off stream storage that is used during dry years to relieve pressure or canal flows for the Western Region and to supply enough water to the area north and east of the reservoir without rationing.

Forty Mile Reservoir

- Commissioned in 1988
- Length - 10.1 kms
- Maximum Depth - 25 m (83.3 ft.)
- Live Storage - 86,300,000 cu. Meters

WASTE MANAGEMENT

North Forty Regional Landfill Services

South Forty Waste Services Commission

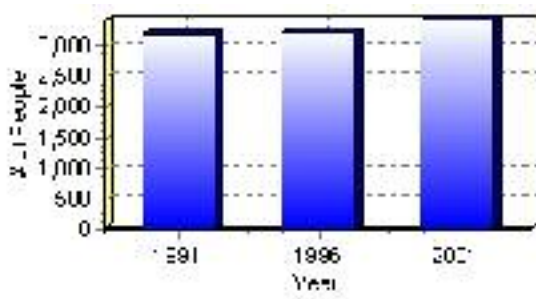
Population

Total Population

Population 2004*	3,432
Population 2003*	3,432
Population 2002*	3,168
Population 2001**	3,165
Population 2000*	3,230
Population 1996**	3,230
Population 1991**	3,193
Population % change 1991-1996	1.15%
Population % change 1996-2001	-1.96%

* Source: Official Population List, Alberta Municipal Affairs
** Source: Statistics Canada 1991, 1996, & 2001 Census

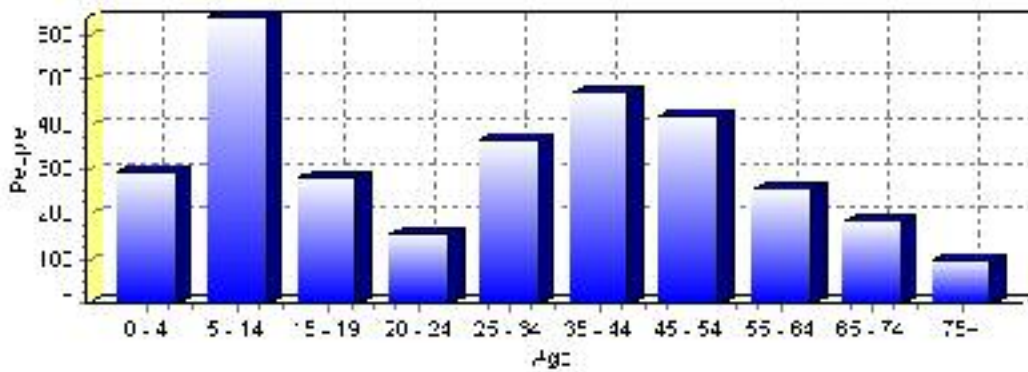
Total Population 1991-2001



Population by Age and Gender	1996 Male	1996 Female	1996 Total	2001 Male	2001 Female	2001 Total
Age 0 - 4	160	140	300	165	130	295
Age 5 - 14	360	325	685	330	310	640
Age 15 - 19	130	125	255	160	120	280
Age 20 - 24	105	70	175	75	80	155
Age 25 - 34	215	215	430	170	195	365
Age 35 - 44	285	240	525	245	225	470
Age 45 - 54	170	180	350	220	200	420
Age 55 - 64	150	125	275	140	115	255
Age 65 - 74	90	80	170	100	85	185
Age 75 and older	45	30	75	60	40	100
Total All Persons	1,710	1,520	3,230	1,650	1,515	3,165

Source: Statistics Canada 1996 & 2001 Census (numbers may not add up due to rounding)

Forty Mile No. 8, County of Population by Age Group (2001)

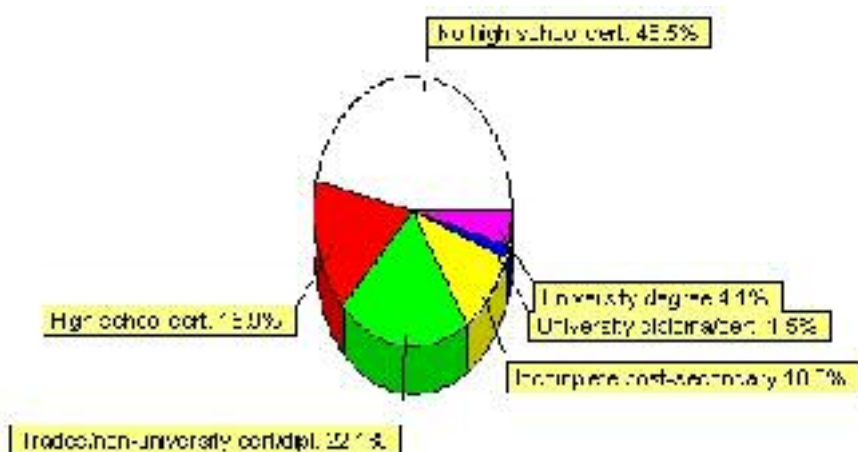


Education Statistics

Highest level of schooling for Population 20yrs and older	2001	%
People without high school certificates	905	46.53%
People with high school certificates	310	15.94%
People with trades or non-university certificate or diploma	430	22.11%
People with post-secondary education (not completed)	195	10.03%
People with university diploma/certificate	30	1.54%
People with university degree	80	4.11%
Total Population 20 years and older	1,945	100.00%

Source: Statistics Canada 2001 Census (numbers may not add up due to rounding)

Forty Mile No. 8, County of Highest Level of Schooling 2001



Population with Post Secondary Qualifications	1996	%	2001	%
Agriculture and biological sciences	100	17.09%	105	19.81%
Commerce, management and business administration	110	18.80%	125	23.58%
Educational, recreational and counseling services	100	17.09%	65	12.26%
Engineering and applied science tech. and trades	150	25.64%	125	23.58%
Engineering and applied sciences	0	0.00%	0	0.00%
Fine and applied arts	30	5.13%	40	7.55%
Health professionals, science and technologies	65	11.11%	40	7.55%
Humanities and related fields	25	4.27%	10	1.89%
Mathematics and physical sciences	10	1.71%	10	1.89%
Social sciences and related fields	10	1.71%	30	5.66%
Other and/or no specialization	0	0.00%	0	0.00%
Total people with post secondary qualifications	585	100.00%	530	100.00%
Females with post-secondary qualifications	295	50.43%	250	47.17%
Males with post-secondary qualifications	290	49.57%	280	52.83%

Source: Statistics Canada 1996 & 2001 Census (numbers may not add up due to rounding)

Labour Force

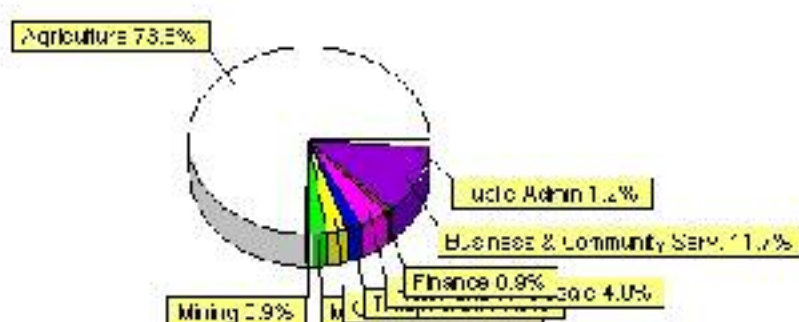
Labour force by activity	1996	2001
In the labour force, both sexes	1,900	1,625
Not in the labour force, both sexes	320	625
Total population 15 and over	2,220	2,245
Employed, both sexes	1,895	1,570
Unemployed, both sexes	10	55
Participation rate, both sexes	85.00%	72.00%
Unemployment rate, both sexes	1.00%	3.00%

Source: Statistics Canada 1996 & 2001 Census (numbers may not add up due to rounding)

Labour Force by Industry Division	1996	% of total	2001	% of total
Agriculture	1,420	74.93%	1,200	73.85%
Mining	50	2.64%	15	0.92%
Manufacturing	10	0.53%	35	2.15%
Construction	25	1.32%	45	2.77%
Transportation. & Utilities	85	4.49%	30	1.85%
Retail and Wholesale	50	2.64%	65	4.00%
Finance	15	0.79%	15	0.92%
Business & Community Services	180	9.50%	190	11.69%
Public Administration	25	1.32%	20	1.23%
Total All Industries	1,895	100.00%	1,625	100.00%

Source: Statistics Canada 1996 & 2001 Census (numbers may not add up due to rounding)

Forty Mile No. 8, County of Labour Force By Industry - 2001



Labour Force by Major Occupational Groups	1996	%	2001	%
Management occupations	45	2.37%	25	1.54%
Business, Finances and administrative occupations	120	6.33%	95	5.86%
Natural and applied sciences and related occupations	0	0.00%	10	0.62%
Health occupations	25	1.32%	35	2.16%
Occupations in social science; education; government and religion	45	2.37%	35	2.16%
Occupations in art; culture; recreation and sport	10	0.53%	0	0.00%

Sales and service occupations	285	15.04%	90	5.56%
Trades; transport; equipment operators and related occupations	135	7.12%	115	7.10%
Occupations unique to primary industry	1,180	62.27%	1,190	73.46%
Occupations unique to processing; manufacturing and utilities	40	2.11%	15	0.93%
Occupations not elsewhere classified	10	0.53%	0	0.00%
Total - All Occupations (major groups)	1,895	100.00%	1,620	100.00%
Females - All Occupations	785	41.42%	630	38.89%
Males - All Occupations	1,110	58.58%	990	61.11%

Source: Statistics Canada 1996 & 2001 Census (numbers may not add up due to rounding)

Income

Family Income (Number of Families)	1996	%	2001	%
less than \$19,999	75	11.81%	65	11.11%
\$20,000 - \$39,999	135	21.26%	165	28.21%
\$40,000 - \$59,999	190	29.92%	215	36.75%
\$60,000 and over	235	37.01%	125	21.37%
Total number of families	635	100.00%	570	97.44%
Average family income	\$57,147		\$56,056	
Median family income	\$51,243		\$49,009	

Source: Statistics Canada 1996 & 2001 Census (numbers may not add up due to rounding)

Household Income (Number of Households)	1996	%	2001	%
less than \$19,999	140	17.50%	120	14.81%
\$20,000 - \$39,999	185	23.13%	175	21.60%
\$40,000 - \$59,999	220	27.50%	265	32.72%
\$60,000 and over	65	8.13%	255	31.48%
Total number of households	800	100.00%	810	100.00%
Average household income	\$51,811		\$52,900	
Median household income	\$44,898		\$48,706	

Source: Statistics Canada 1996 & 2001 Census (numbers may not add up due to rounding)

Dwellings

Occupied Private Dwellings by Type	1996	% of total	2001	% of total
Apartments	0	0.00%	0	0.00%
Detached Duplexes	0	0.00%	0	0.00%
Movable Dwellings	30	3.73%	40	4.94%
Other single attached house	10	1.24%	0	0.00%
Row and semi-detached house	0	0.00%	0	0.00%
Single-detached house	760	94.41%	770	95.06%
Total number of occupied private dwellings	805	100.00%	810	100.00%
Private dwellings, owned	640	79.50%	720	88.89%
Private Dwellings, rented	160	19.88%	90	11.11%

Source: Statistics Canada 1996 & 2001 Census (numbers may not add up due to rounding)

Private Dwellings by Period of Construction	# of Dwellings	% of total
Period of construction, before 1946	120	14.72%
Period of construction, 1946 - 1960	220	26.99%
Period of construction, 1961 - 1970	145	17.79%
Period of construction, 1971 - 1980	170	20.86%
Period of construction, 1981 - 1990	80	9.82%
Period of construction, 1991 - 2001	80	9.82%
Total number of private dwellings constructed	815	100.00%

Source: Statistics Canada 2001 Census (numbers may not add up due to rounding)

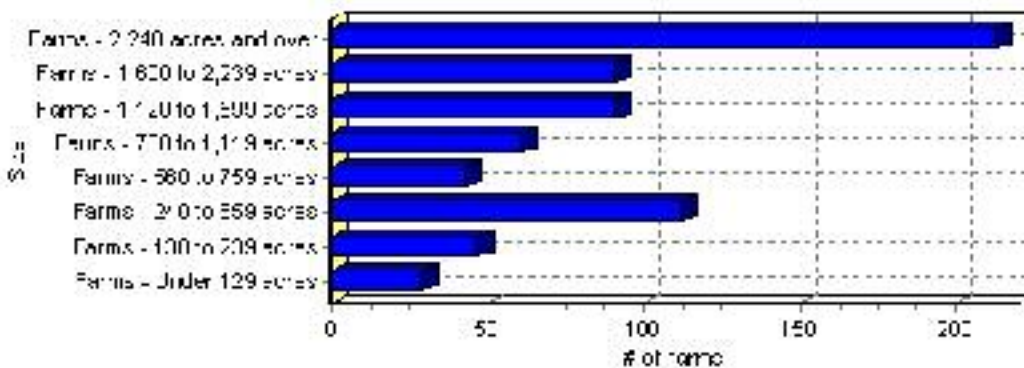
Farming

Forty Mile No. 8, County of Total Farm Area : 690 acres

Farms by Total Farm Area (2001)	# of Farms	% of total
Farms - Under 129 acres	29	4.22%
Farms - 130 to 239 acres	47	6.84%
Farms - 240 to 559 acres	112	16.30%
Farms - 560 to 759 acres	43	6.26%
Farms - 760 to 1,119 acres	61	8.88%
Farms - 1,120 to 1,599 acres	91	13.25%
Farms - 1,600 to 2,239 acres	91	13.25%
Farms - 2,240 acres and over	213	31.00%
Total number of farms reporting	687	100.00%

Source: Statistics Canada 2001 Census of Agriculture(numbers may not add up due to rounding)

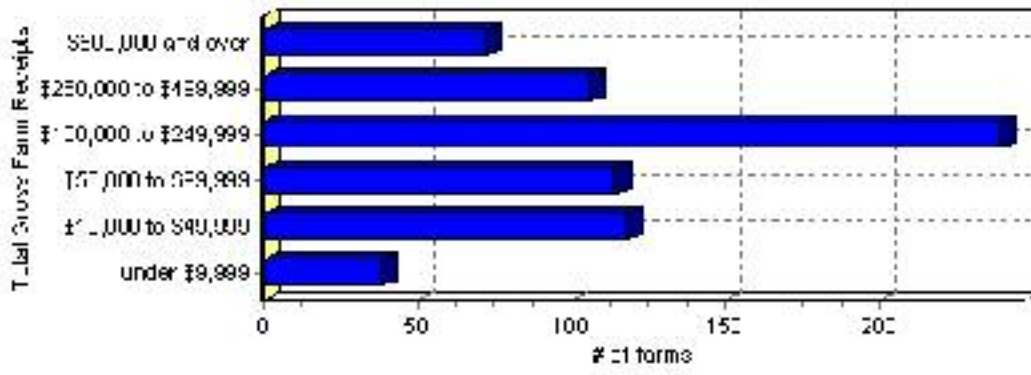
of Farms by Total Farm Area



Farms by Total Gross Farm Receipts - 2001	# of Farms	% of total
Farms gross farm receipts - under \$9,999	38	5.53%
Farms gross farm receipts - \$10,000 to \$49,999	118	17.18%
Farms gross farm receipts - \$50,000 to \$99,999	114	16.59%
Farms gross farm receipts - \$100,000 to \$249,999	239	34.79%
Farms gross farm receipts - \$250,000 to \$499,999	106	15.43%
Farms gross farm receipts - \$500,000 and over	72	10.48%
Total number of farms reporting	687	100.00%

Source: Statistics Canada 2001 Census of Agriculture(numbers may not add up due to rounding)

Total Gross Farm Receipts

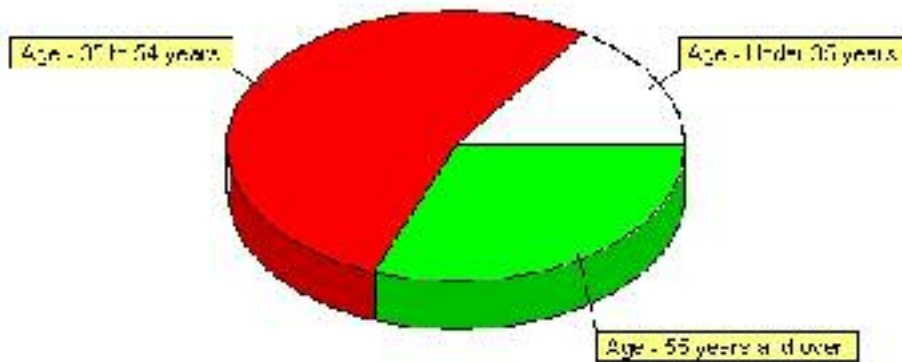


Farming, Continued

Characteristics of Farm Operators	#	%
Age - Under 35 years	140	15.38%
Age - 35 to 54 years	485	53.30%
Age - 55 years and over	280	30.77%
Average age of operators	49	
Number of operators - Female	175	19.23%
Number of operators - Male	730	80.22%
Total number of operators reporting	910	100.00%

Source: Statistics Canada 2001 Census of Agriculture(numbers may not add up due to rounding)

Age of Farm Operators



Disclaimer: Information in this profile has been provided from a variety of external sources. Although every effort has been made to ensure the accuracy, currency and reliability of the content and data, AlbertaFirst.com Ltd. accepts no responsibility in this regard.

© AlbertaFirst.com Ltd., 2006.