

# Ryley

[www.village.ryley.ab.ca](http://www.village.ryley.ab.ca)

## Welcome

Come experience the "life of Ryley"! Whether you are passing through or visiting, I am sure your stay here will be enjoyable. The residents of Ryley and the surrounding area are warm, friendly, hard working individuals who will do their best to help you enjoy the tranquil nature of our busy community.

Fully serviced residential, business and industrial lots are a small fraction of the cost in larger municipalities. Combine this with the close proximity to Edmonton [75 km], Camrose [50 km] and Vegreville [50 km], we think that living in Ryley offers the best of both worlds. A quiet, safe and inexpensive lifestyle -- all scant minutes from major trading areas.

If you are looking for a community to set down roots, then Ryley is the place for you!

Elston Solberg  
Mayor of Ryley

## Area Overview

The picturesque Village of Ryley welcomes visitors and new residents to the tranquil community located 50 minutes east of Edmonton on Highway 14 [the Poundmaker Trail].

Ryley was incorporated as a village in 1910. The name was named in honour of Mr. G.U. Ryley, the Grand Trunk Pacific land commissioner, of Winnipeg. In 1915, Ryley became the seat of local rural government for the county area. Today, the County of Beaver municipal office and Public Works shop are located in the Village.

## Community Services

### Municipal

Village of Ryley  
Box 230  
Ryley, Alberta  
T0B 4A0  
Tel: 780-663-3653  
Fax: 780-663-3541

McPherson Public Library  
5113 - 50 Street  
Ryley, Alberta  
Tel: 780-663-3999

### Provincial

N/A

### Federal

Canada Post Office

# Community Lifestyle

## Recreation

Recreation facilities include an indoor swimming pool, 3-sheet curling rink, new and modern community centre, outdoor skating rink, 3 shale diamonds for fastball and 1 baseball diamond, picnic and tenting area and a new 20-stall campground. The village also has the seniors' Sunshine Club.

## Community Organizations

Community organizations include the Ryley Legion, Sunshine Club, Ryley School Students Group, Ryley Rebels [men's baseball], Ryley Fire Department, Ryley Library Board, Ryley Mixed Slow Pitch, Ryley Museum Society, Rebecca Lodge, Ryley Blue Jays [ladies fastball], Lions Club, Beaver Heritage and Agriculture Society, Ryley Men's Fastball, Ryley Curling Club, and Ryley Junior Sports.

## Religious Services

- Catholic Church
- Lutheran Church
- Ryley Seventh Day Adventist Church
- Good News Community Church
- Total Life Christian Centre
- Salem Mennonite Church

## Special Annual Events/Attractions

Ryley is home of the George's Harness and Saddlery, a working museum known throughout Canada and internationally by those who appreciate the fine leather saddles and tack produced by our local craftsmen. Visitors will see specialized leather working machines, some still in use, from the horse era. The front of the building is an accurate replica of a store front from the early 1900's.

The Ryley Museum houses a well maintained collection of artifacts, photographs, drawings, books and mementos showing how people lived in Ryley and area from the early 1890's.

Ryley Sports Day is held annually on the third Saturday of June. Featured events include free breakfast with admission to grounds, parade, lots of ball games, penny carnival for kids, some special features such as a petting zoo, dancing exhibitions and local bands. Also, there is a beer garden, beef supper, dance and fireworks.

The Threshing Bee is held annually on the Monday of Thanksgiving weekend. At this popular local event, the clock is turned back to the early years. The grain is harvested with binders, then stooked ready for the big day. Horses and wagons collect the stooks and haul them to the threshing machine. Old equipment is still used. Everyone is urged to participate. There is usually some great home-made pie and coffee on-site too.

## Hospitality

### *Accommodation*

- Meadley's Place Bed & Breakfast
- Alberta Hotel

### *Restaurants*

- Ryley Hotel Cafe
- Long Do Goody
- J.C.'s Bakery

- Pizza at the Forgotten Store

## Economic Base

Ryley's economic base is agriculture and services for agriculture, as well as a variety of small specialty service businesses.

## Economic Facts

The rural area is mixed farming. The Village sits near one of the largest bituminous coal fields in the province. Ryley is located on the "Bears Paw" formation [700 metres of impervious clay below the village and area].

### Major Businesses Products/Services

- Alberta Hotel
- Alberta Wheat Pool
- Alberta Treasury Branch
- Andrukow Farm Sales
- Bargain Boutique
- Beaver Regional Waste Management Services Commission
- Clark and Co., Insurance Agencies
- County of Beaver
- Dalson Service Station
- Dodds Coal Mine
- Family and Community Support Services
- George's Harness and Saddlery
- Highline Developments
- J.C.'s Bakery
- J & D Ceramics
- Laidlaw Environmental Services Ltd.
- Long Do Goody Restaurant
- Meadley's Bed and Breakfast
- The Repair Shop
- Ryalta Industries
- Ryley Community Centre
- Ryley Foods
- Ryley Motors
- Ryley Restaurant
- Ryley Sausage
- Ryley Family Hair Centre
- Southpaw Welding
- The Forgotten Store
- Tar Services
- Water Pure and Simple

## Financial Institutions

- Alberta Treasury Branch

## Education

Ryley is part of the Battle River Regional Division #31, headquartered in Camrose [Tel: 780-672-6131].

### Daycare/Nursery

There are no official day care businesses, but some individuals baby-sit in their homes.

### Public

Ryley School provides education from Kindergarten to Grade 6 and from Grade 10 to Grade 12. Students in Grades 7 to 9 attend junior high school in Holden.

### Separate

N/A

### Private

N/A

## Emergency Services

### Fire Protection

Ryley is served by a volunteer fire department [Tel: 780-663-3811 emergencies only].

### Police Services

Ryley is served by the Tofield detachment of the Royal Canadian Mounted Police [RCMP] [Tel: 780-662-3352].

### Ambulance Services

Ryley and area is served by the Beaver Ambulance Society, with units based in Tofield and Viking [Tel: 780-662-3263].

## Health Care

The nearest hospital is the Tofield Health Centre, 19 km west of Ryley. Also, there is the Toliver Clinic and Medical Clinic, as well as some Doctors' offices.

## Key Contacts for Business Development

### Municipal

Village of Ryley

Box 230

Ryley, Alberta

T0B 4A0

Tel: 780-663-3653

Fax: 780-663-3541

Ivan Des-Jardine  
Mayor

Rhonda Knudslie  
Administrator

**Provincial (Updated December 2004)**

Alberta Economic Development  
Allan Walkey, Regional Manager  
[allan.walkey@gov.ab.ca](mailto:allan.walkey@gov.ab.ca)  
Dale Beddoes, Information Officer  
[dale.beddoes@gov.ab.ca](mailto:dale.beddoes@gov.ab.ca)

5005 - 49 Street  
Camrose, Alberta  
T4V 1N5  
Tel: 780-679-1235  
Fax: 780-679-1250

Ed Stelmach  
Member of the Legislative Assembly [MLA]  
Fort Saskatchewan-Vegreville Constituency  
607 Legislature Annex  
9718 107 Street  
Edmonton, Alberta  
T5K 2B6  
Tel: 780-422-5384  
Fax: 780-415-0951

Constituency Office:  
Box 451  
4945 - 51 Avenue  
Vegreville AB  
T9C 1R6  
Tel: 780-632-6840  
Fax: 780-632-6888

**Federal (Updated June 2001)**

Leon Benoit  
Member of Parliament [MP]  
Vegreville—Wainwright Constituency  
House of Commons  
Ottawa, Ontario  
K1A 0A6

Constituency Office:  
P.O. Box 300  
Mannville, Alberta  
T0B 2W0  
Tel: 780-763-6130  
Fax: 780-763-6132

## Location

The Village of Ryley is located in the County of Beaver No. 9. Ryley is 75 km east of Edmonton and 50 km northeast of Camrose.

## Post Secondary Education

Ryley residents have access to Edmonton-based post-secondary institutions such as The University of Alberta, Grant MacEwan College and the Northern Alberta Institute of Technology [NAIT]. As well, students may attend Augustana University College at Camrose or Lakeland College at Vegreville.

## Taxation

	<u>Residential/Farmland</u>	<u>Non-Residential</u>
<b>2005</b>		
Municipal Tax Rate	19.8160	22.0460
Education - Alberta School Foundation Fund Tax Rate	3.8910	6.8570
Seniors Lodge Accommodation Tax Rate	.1810	.1810

### Mill Rates [1995]

Residential - Public 28.886

Residential - Separate N/A

Non-Residential - Public 35.084

Non-Residential - Separate N/A

## Transportation

### Air Services

The closest airport is at Viking, 48 km southeast of the village. The nearest commercial and airfreight services are at Edmonton, 63 km west.

### Rail Services

Ryley is served by the C.N.R. main line. Spur trackage is available.

### Highways

The connecting highways to Ryley are Highway 14 [the Poundmaker Trail] from Edmonton to Viking and on into Saskatchewan. Secondary Road 854 from Ryley north to Secondary Road 626 and then east to Secondary Road 855 and then north to Highway 16 is all paved. Secondary Road 854 continues south of Ryley but is gravel only.

### Trucking Firms

- Good's Transport
- C.N. Express
- G & P [Manderson] Trucking
- Hardisty Express
- Aries Freight
- CanPar

**Bus Services**

Greyhound Bus Lines offer daily services to Ryley.

**Couriers and Taxis**

Loomis and Purolater Couriers

## Utilities

**Electrical Power**

TransAlta Utilities Corporation

5036 - 53 Ave.

Tofield, Alberta

T0B 4J0

Tel: 780-662-3110

**Natural Gas**

Atco Gas Ltd.

4720 - 46 Avenue

Tofield, Alberta

Tel: 780-662-3030

**Telephone**

Telus

Tel: 780-310-2255 [toll-free] Telecentre

Tel: 780-341-8100 [toll-free] General Enquiries

**Water Supply**

Ryley's source of water is the pipeline from Edmonton operated by CU Water Ltd.

**Waste Management**

Sewage treatment is by lagoon with 4 short and 2 long detention ponds. There is a sanitary landfill operated by the Beaver Regional Waste Management Services Commission.

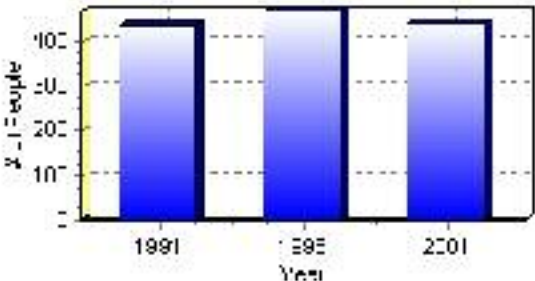
# Population

## Total Population

Population 2004*	437
Population 2003*	437
Population 2002*	437
Population 2001**	440
Population 2000*	465
Population 1996**	465
Population 1991**	432
Population % change 1991-1996	7.10%
Population % change 1996-2001	-6.41%

\* Source: Official Population List, Alberta Municipal Affairs  
\*\* Source: Statistics Canada 1991, 1996, & 2001 Census

## Total Population 1991-2001

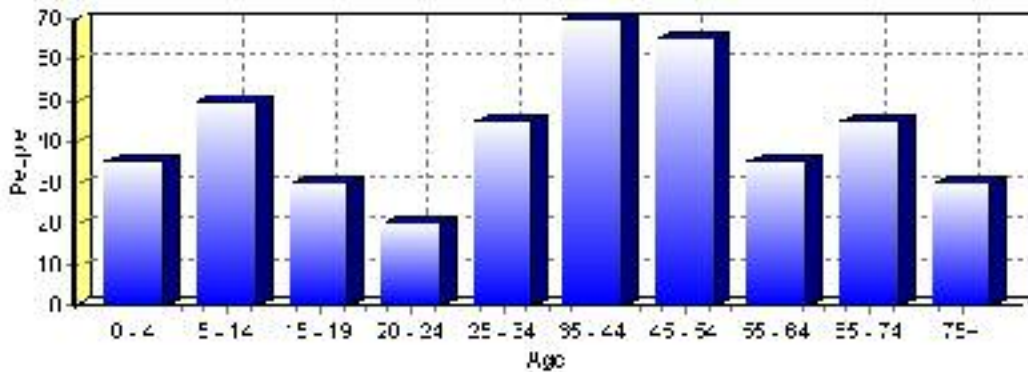




Population by Age and Gender	1996 Male	1996 Female	1996 Total	2001 Male	2001 Female	2001 Total
Age 0 - 4	15	15	30	20	15	35
Age 5 - 14	25	35	60	30	20	50
Age 15 - 19	15	10	25	15	15	30
Age 20 - 24	15	10	25	10	10	20
Age 25 - 34	35	30	65	25	20	45
Age 35 - 44	35	30	65	30	40	70
Age 45 - 54	25	25	50	35	30	65
Age 55 - 64	20	30	50	20	15	35
Age 65 - 74	25	20	45	25	20	45
Age 75 and older	20	25	45	15	15	30
Total All Persons	230	235	465	225	210	435

Source: Statistics Canada 1996 & 2001 Census (numbers may not add up due to rounding)

### Ryley Population by Age Group (2001)

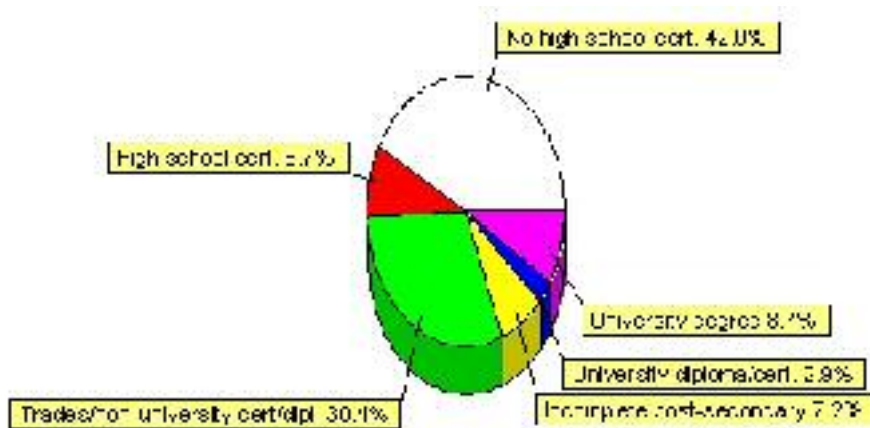


## Education Statistics

Highest level of schooling for Population 20yrs and older	2001	%
People without high school certificates	145	42.03%
People with high school certificates	30	8.70%
People with trades or non-university certificate or diploma	105	30.43%
People with post-secondary education (not completed)	25	7.25%
People with university diploma/certificate	10	2.90%
People with university degree	30	8.70%
Total Population 20 years and older	345	100.00%

Source: Statistics Canada 2001 Census (numbers may not add up due to rounding)

### Ryley Highest Level of Schooling 2001



Population with Post Secondary Qualifications	1996	%	2001	%
Agriculture and biological sciences	10	9.52%	10	6.90%
Commerce, management and business administration	15	14.29%	35	24.14%
Educational, recreational and counseling services	30	28.57%	15	10.34%
Engineering and applied science tech. and trades	10	9.52%	30	20.69%
Engineering and applied sciences	0	0.00%	0	0.00%
Fine and applied arts	10	9.52%	0	0.00%
Health professionals, science and technologies	0	0.00%	30	20.69%
Humanities and related fields	20	19.05%	10	6.90%
Mathematics and physical sciences	10	9.52%	0	0.00%
Social sciences and related fields	10	9.52%	10	6.90%
Other and/or no specialization	0	0.00%	0	0.00%
Total people with post secondary qualifications	105	100.00%	145	100.00%
Females with post-secondary qualifications	70	66.67%	80	55.17%
Males with post-secondary qualifications	35	33.33%	65	44.83%

Source: Statistics Canada 1996 & 2001 Census (numbers may not add up due to rounding)

## Labour Force

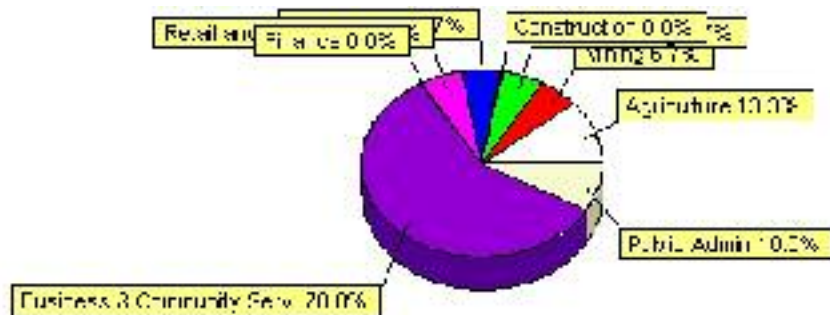
Labour force by activity	1996	2001
In the labour force, both sexes	215	155
Not in the labour force, both sexes	150	205
Total population 15 and over	370	365
Employed, both sexes	215	150
Unemployed, both sexes	0	0
Participation rate, both sexes	58.00%	43.00%
Unemployment rate, both sexes	0.00%	0.00%

Source: Statistics Canada 1996 & 2001 Census (numbers may not add up due to rounding)

Labour Force by Industry Division	1996	% of total	2001	% of total
Agriculture	10	4.65%	20	13.33%
Mining	0	0.00%	10	6.67%
Manufacturing	25	11.63%	10	6.67%
Construction	0	0.00%	0	0.00%
Transportation. & Utilities	35	16.28%	10	6.67%
Retail and Wholesale	80	37.21%	10	6.67%
Finance	0	0.00%	0	0.00%
Business & Community Services	50	23.26%	105	70.00%
Public Administration	10	4.65%	15	10.00%
Total All Industries	215	100.00%	150	100.00%

Source: Statistics Canada 1996 & 2001 Census (numbers may not add up due to rounding)

### Ryley Labour Force By Industry - 2001



Labour Force by Major Occupational Groups	1996	%	2001	%
Management occupations	30	13.95%	0	0.00%
Business, Finances and administrative occupations	25	11.63%	0	0.00%
Natural and applied sciences and related occupations	10	4.65%	0	0.00%
Health occupations	0	0.00%	20	12.90%
Occupations in social science; education; government and religion	10	4.65%	0	0.00%
Occupations in art; culture; recreation and sport	0	0.00%	0	0.00%

Sales and service occupations	70	32.56%	50	32.26%
Trades; transport; equipment operators and related occupations	35	16.28%	45	29.03%
Occupations unique to primary industry	10	4.65%	15	9.68%
Occupations unique to processing; manufacturing and utilities	20	9.30%	10	6.45%
Occupations not elsewhere classified	0	0.00%	0	0.00%
Total - All Occupations (major groups)	215	100.00%	155	100.00%
Females - All Occupations	85	39.53%	80	51.61%
Males - All Occupations	130	60.47%	75	48.39%

Source: Statistics Canada 1996 & 2001 Census (numbers may not add up due to rounding)

---

## Income

<b>Family Income (Number of Families)</b>	<b>1996</b>	<b>%</b>	<b>2001</b>	<b>%</b>
less than \$19,999	25	20.00%	20	16.67%
\$20,000 - \$39,999	45	36.00%	60	50.00%
\$40,000 - \$59,999	30	24.00%	20	16.67%
\$60,000 and over	25	20.00%	20	16.67%
Total number of families	125	100.00%	120	100.00%
Average family income	\$39,671		\$40,290	
Median family income	\$36,051		\$32,905	

Source: Statistics Canada 1996 & 2001 Census (numbers may not add up due to rounding)

<b>Household Income (Number of Households)</b>	<b>1996</b>	<b>%</b>	<b>2001</b>	<b>%</b>
less than \$19,999	65	32.50%	50	26.32%
\$20,000 - \$39,999	65	32.50%	75	39.47%
\$40,000 - \$59,999	30	15.00%	10	5.26%
\$60,000 and over	10	5.00%	30	15.79%
Total number of households	200	100.00%	190	100.00%
Average household income	\$33,559		\$35,913	
Median household income	\$31,798		\$27,619	

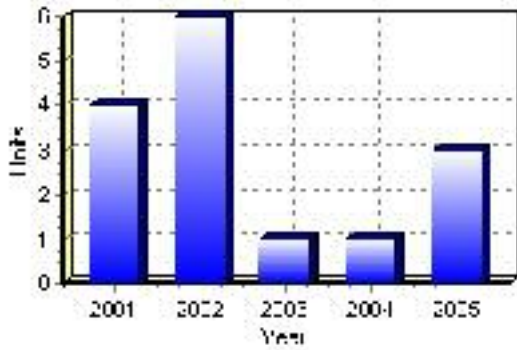
Source: Statistics Canada 1996 & 2001 Census (numbers may not add up due to rounding)

# Building Permits

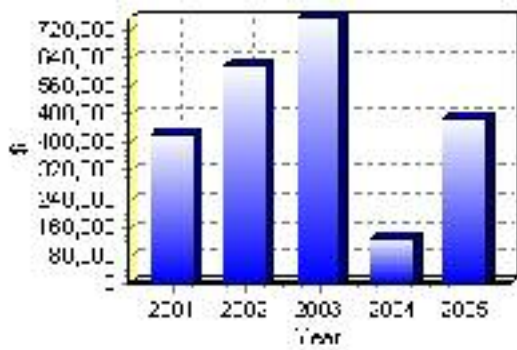
Total Building Permit Values	2001	2002	2003	2004	2005
Building Permits Value, Commercial	\$99,000	\$0	\$590,000	\$55,000	\$0
Building Permits Value, Industrial	\$0	\$0	\$0	\$0	\$0
Building Permits Value, Institutional	\$0	\$0	\$0	\$5,000	\$0
Building Permits Value, Residential	\$325,000	\$616,000	\$162,000	\$72,000	\$472,000
Building Permits Value, Total	\$424,000	\$616,000	\$752,000	\$132,000	\$472,000
Total Housing Starts	4	6	1	1	3

Source: Statistics Canada 2000-2004 Building Permits (numbers may not add up due to rounding)

## Total Housing Starts



## Value of Building Permits



## Dwellings

<b>Occupied Private Dwellings by Type</b>	<b>1996</b>	<b>% of total</b>	<b>2001</b>	<b>% of total</b>
Apartments	0	0.00%	0	0.00%
Detached Duplexes	0	0.00%	0	0.00%
Movable Dwellings	30	15.38%	0	0.00%
Other single attached house	10	5.13%	5	2.70%
Row and semi-detached house	10	5.13%	10	5.41%
Single-detached house	145	74.36%	170	91.89%
Total number of occupied private dwellings	195	100.00%	185	100.00%
Private dwellings, owned	130	66.67%	160	86.49%
Private Dwellings, rented	65	33.33%	25	13.51%

Source: Statistics Canada 1996 & 2001 Census (numbers may not add up due to rounding)

<b>Private Dwellings by Period of Construction</b>	<b># of Dwellings</b>	<b>% of total</b>
Period of construction, before 1946	45	23.08%
Period of construction, 1946 - 1960	50	25.64%
Period of construction, 1961 - 1970	35	17.95%
Period of construction, 1971 - 1980	50	25.64%
Period of construction, 1981 - 1990	15	7.69%
Period of construction, 1991 - 2001	0	0.00%
Total number of private dwellings constructed	195	100.00%

Source: Statistics Canada 2001 Census (numbers may not add up due to rounding)

Disclaimer: Information in this profile has been provided from a variety of external sources. Although every effort has been made to ensure the accuracy, currency and reliability of the content and data, AlbertaFirst.com Ltd. accepts no responsibility in this regard.

© AlbertaFirst.com Ltd., 2006.