

Trochu

www.town.trochu.ab.ca

Welcome

Relocating your family or business?

Please include Trochu at the top of your list

As the Mayor of Trochu, Alberta, I will be the first to admit that I have a bias opinion in favor of our little gem of a town. I would like to share some interesting facts about Trochu. I believe that you will be in awe when you see the community spirit and perhaps you too will decide that Trochu is a place to make your home.

The first consideration in Trochu is the quality we can offer:

Country living with bigger cities 45 min – 2 hours away

Very low crime rate

School hosting Kindergarten – Grade 12 with exceptional teachers

Recreational facilities including a golf course, outdoor swimming pool, an arena, a youth center, ball diamonds and a huge new community center

Tourist attractions such as The Arboretum, St. Anne's Ranch, a Museum and the Buffalo Jump and the Red Deer River within 15 minutes

Variety of local churches and religious opportunities give the people of Trochu an ideal place to put down roots and raise a family.

Logistics is a consideration in any relocation event so let me acquaint you with our geographical positioning.

We are located in South Central Alberta on Highway 21, which is the 2nd most used North/South Highway behind Highway 2. We are 2 ½ hours S.E. of Edmonton for you Oiler fans, 1 1/5 hours N.E. of Calgary for you Flames fans, 50 minutes S.E. of Red Deer, 40 minutes straight East of Olds.

Our main industry is agriculture and oil & gas. We also have Sunterra Meats Plant that employs over 50 full time staff. For industry purposes we are convenient to railway, shipping, and trucking transport.

These are the facts but you must experience the charm of our Town and the incredible hospitality of all the people in our community to truly understand why we pride ourselves to call Trochu home. Check out our Town at www.trochu.town.ab.ca

Economic Development is the highest priority for Trochu, so if you're looking for a move please call us first as we will be very accommodating.

Thank You for visiting the Town of Trochu site on the albertafirst.com network.

Mayor Barry Kletke



Come and sew the seeds of your own quilt patch and grow with Trochu and area.

Area Overview

Trochu is located in East Central Alberta approximately 80 kilometers southeast of Red Deer. Functioning primarily as an agricultural service centre, Trochu has a trading area population of approximately 5,000. Highway 21, a major north/south transportation artery in East Central Alberta, intersects with Secondary Highway 585 at Trochu. These roadways provide Trochu with excellent transportation links. The topography of the area surrounding the Town consists of rolling farmland. The town itself is situated on the north bank of a large coulee that contains the Trochu Creek, a tributary of the Kneehills Creek which in turn flows into the Red Deer River. The land slopes from a high point in the Northwest of the town towards the coulee in the Southeast.

Community Services

Municipal

Town of Trochu
P.O. Box 340
Trochu, Alberta
T0M 2C0
Tel: 403-442-3085
Fax: 403-442-2528

Administration
Municipal Library
Public Works

Provincial

Transportation and Utilities
Provincial Park Office [Seasonal]

Federal

Post Office

Community Lifestyle

Recreation

Trochu has a municipal campground with 13 fully-serviced sites. Only 20 km east of town is the Tolman Bridge Provincial Recreation Area with 69 sites.

Trochu has a golf club, archery field and shooting range, swimming pool, tennis courts, 4 baseball diamonds, and a number of playgrounds for small children. There is also a Senior Citizen's Drop-In Centre.

Community Organizations

There are a number of community organizations such as: Masons, Knights of Columbus, Eastern Star, 4-H Club, Historical Society, Royal Purple, Lions Club, Royal Canadian Legion, Chamber of Commerce, Gun Club, Light Horse Association and others. In addition there are a number of sports groups.

Special Annual Events/Attractions

- Trochu Arboretum / Available for weddings, photo's and functions.

Hospitality

Accommodation

- Trochu River Road Inn
- Yale Hotel
- St. Ann Ranch Country Bed and Breakfast Teahouse
- Dog Tired Inn
- Trochu Lion's Campground
- Bankers Inn

Restaurants

- Buffalo Jump Pizzeria & Lounge
- Peking Cafe
- Yale Hotel Dining Lounge
- St. Ann Ranch Country Bed and Breakfast Teahouse
- River Rock Restaurant
- Taste of Greece

Religious Facilities



Lutheran Church

Trochu Baptist Church

United Church of Canada

St. Anne's Catholic Church - A monument to Trochu's rich heritage

Economic Base

The economic base of the region includes Alberta Beef, Agriculture, Oil, Natural gas, Methane Gas, and tourism.

Economic Facts

Major Businesses Products/Services

- Sunterra Meats <http://www.sunterrameats.ca>
- Agro Trochu, Div. of Cervus Corp www.agroequipment.com
- Trochu Motors Machinery Sales

Financial Institutions

- Bank of Montreal
- Alberta Treasury Branch

Education

Trochu is part of the Golden Hills Regional School Division No. 15, headquartered in Strathmore [Tel: 403-934-5121].

Daycare/Nursery

There is 1 day care facility in Trochu.

Public

Schools in Trochu include Pontmain School [K-3] and Trochu Valley School [4-12].

Separate

N/A

Private

N/A

Health Care

The St. Mary's Health Care Centre has 25 nursing home beds as well as a lodge care facility. There are 3 doctors, 1 dentist, 1 medical clinic, 1 dental clinic and a senior citizens lodge. Active hospital care is available at Three Hills, 13 km away.

[-.- Emergency Services -.]

Fire Protection

Trochu is served by a volunteer fire department [Tel: 403-442-3838]

Police Services

Trochu is served by the Three Hills detachment of the Royal Canadian Mounted Police [RCMP] [Tel: 403- 443-5538]

Ambulance Services

Kneehill Ambulance Service provides ambulance service to Trochu [Tel: 403-442-3777]

Key Contacts for Business Development

Municipal

Town of Trochu
P.O. Box 340
Trochu, Alberta
T0M 2C0
Tel: 403-442-3085
Fax: 403-442-2528
E-Mail: chiefadmin@town.trochu.ab.ca
Barry Kletke
Mayor

Maureen Malaka
Administer/Economic Development Officer

Provincial (Updated May 2006)

Alberta Economic Development
2nd Floor, Provincial Building
4920 - 51 Street
Red Deer, Alberta
T4N 6K8
Tel: 403-340-5300
Fax: 403-340-5231
Andre Tremblay, Regional Manager
andre.tremblay@gov.ab.ca
Dawna Allard, Regional Development Officer
dawna.allard@gov.ab.ca
Lisa Houle, Regional Project Officer
lisa.houle@gov.ab.ca

Richard Marz
Member of the Legislative Assembly [MLA]
Olds-Didsbury-Three Hills Constituency

Constituency Office
P.O. Box 3807
#3, 4530 - 49 Avenue
Olds, AB
T4H 1P5
Phone: (403) 556-3132
Fax: (403) 556-3120
oldsdidsbury.threehills@assembly.ab.ca

Legislature Office
#639 Legislature Annex

9718 - 107 Street
Edmonton, AB
T5K 1E4
Phone: (780) 415-0994
Fax: (780) 415-0951

Federal (Updated May 2006)

Kevin Sorenson
Member of Parliament [MP]
Crowfoot Constituency
House of Commons

Parliamentary Address
House of Commons
Ottawa, Ontario
K1A 0A6
Telephone: (613) 947-4608
Fax: (613) 947-4611
E-Mail: Sorenson.K@parl.gc.ca

Constituency Address
4945 - 50th Street
Camrose, Alberta
T4V 1P9
Telephone: (780) 608-4600 1-800-665-4358
Fax: (780) 608-4603

Location

The Town of Trochu is located in the Municipal District of Kneehill No. 48, on Highway 21. It is 135 km northeast of Calgary, 82 km southeast of Red Deer and 75 km northwest of Drumheller.



So hitch your wagon and come to where high tech blends with the serenity of Trochu and life just gets better.

Post Secondary Education

Red Deer College and Olds College are within commuting distance of Trochu. Red Deer College offers a wide variety of certificate,

diploma and university transfer courses, while Olds College specializes in agriculture. The City of Calgary also provides additional post-secondary education facilities.

Taxation

	<u>Residential/Farmland</u>	<u>Non-Residential</u>
2006		
Municipal Tax Rate	14.48	22.61
Education - Alberta School Foundation Fund Tax Rate	4.52	7.39

Transportation

Air Service

The nearest airport is at Three Hills, 10 km south of Trochu. The nearest commercial and air freight services are at Calgary International Airport.

Rail Service

Trochu is served by a Canadian National Railway secondary main line. Spur trackage is available.

Highways

Connecting highways are Highway 21, Highway 27 and Highway 585.

Trucking Firms

Hiway 9 Transport

Bus Services

Regularly scheduled service is available.

Utilities

Electrical Power

Atco
202 Main Street
Three Hills, Alberta
Tel: 1-800-668-2248

Natural Gas

Atco Gas
30 1A North
Trochu, Alberta

T0M 2C0

Tel: 442-3933

Telus

Tel: 1-888-223-0300

Water Supply

The Town of Trochu receives their water from the Red Deer River through the Town of Three Hills distribution system.

Waste Management

Sewage is treated by 4 short and 2 long detention lagoons.

Residential and industrial garbage is collected weekly, while commercial garbage is collected twice weekly.

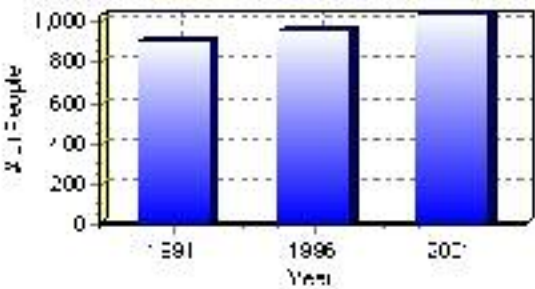
Population

Total Population

Population 2004*	1,033
Population 2003*	1,033
Population 2002*	1,033
Population 2001**	1,035
Population 2000*	958
Population 1996**	958
Population 1991**	907
Population % change 1991-1996	5.32%
Population % change 1996-2001	7.26%

* Source: Official Population List, Alberta Municipal Affairs
** Source: Statistics Canada 1991, 1996, & 2001 Census

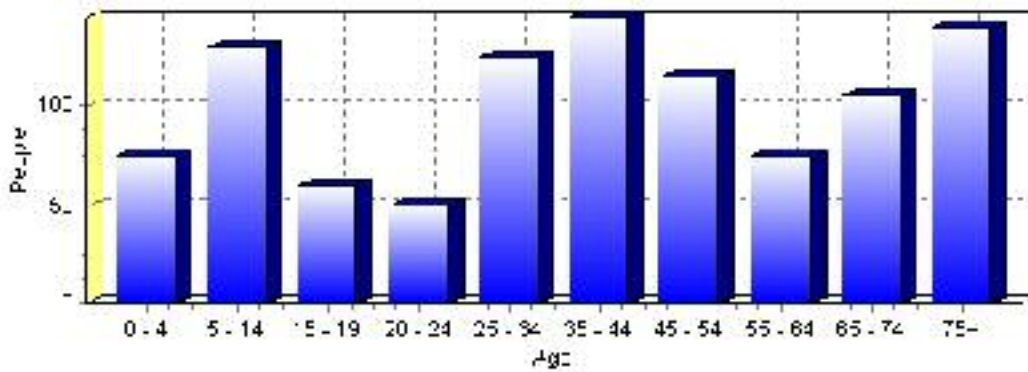
Total Population 1991-2001



Population by Age and Gender	1996 Male	1996 Female	1996 Total	2001 Male	2001 Female	2001 Total
Age 0 - 4	30	25	55	45	30	75
Age 5 - 14	65	75	140	65	65	130
Age 15 - 19	35	30	65	35	25	60
Age 20 - 24	30	20	50	25	25	50
Age 25 - 34	60	55	115	65	60	125
Age 35 - 44	70	80	150	80	65	145
Age 45 - 54	35	40	75	55	60	115
Age 55 - 64	35	45	80	35	40	75
Age 65 - 74	50	60	110	50	55	105
Age 75 and older	50	90	140	50	90	140
Total All Persons	455	505	960	515	520	1,035

Source: Statistics Canada 1996 & 2001 Census (numbers may not add up due to rounding)

Trochu Population by Age Group (2001)

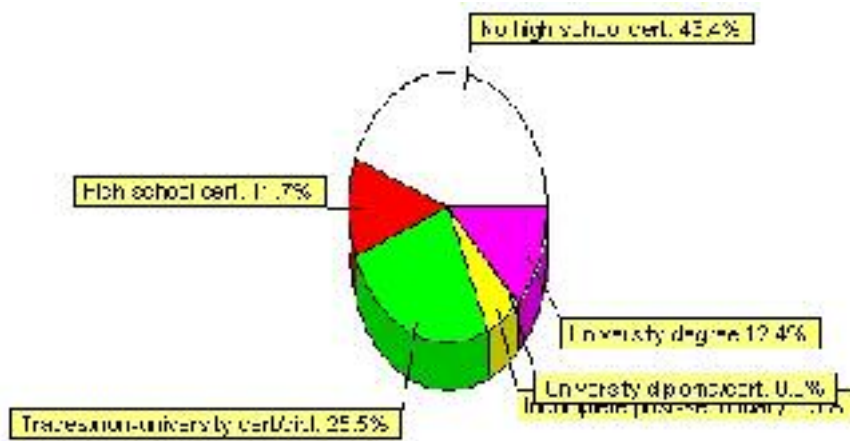


Education Statistics

Highest level of schooling for Population 20yrs and older	2001	%
People without high school certificates	315	43.45%
People with high school certificates	85	11.72%
People with trades or non-university certificate or diploma	185	25.52%
People with post-secondary education (not completed)	40	5.52%
People with university diploma/certificate	0	0.00%
People with university degree	90	12.41%
Total Population 20 years and older	725	100.00%

Source: Statistics Canada 2001 Census (numbers may not add up due to rounding)

Trochu Highest Level of Schooling 2001



Population with Post Secondary Qualifications	1996	%	2001	%
Agriculture and biological sciences	30	15.79%	50	18.18%
Commerce, management and business administration	35	18.42%	35	12.73%
Educational, recreational and counseling services	20	10.53%	35	12.73%
Engineering and applied science tech. and trades	50	26.32%	85	30.91%
Engineering and applied sciences	0	0.00%	0	0.00%
Fine and applied arts	10	5.26%	0	0.00%
Health professionals, science and technologies	40	21.05%	55	20.00%
Humanities and related fields	0	0.00%	10	3.64%
Mathematics and physical sciences	0	0.00%	10	3.64%
Social sciences and related fields	0	0.00%	0	0.00%
Other and/or no specialization	0	0.00%	0	0.00%
Total people with post secondary qualifications	190	100.00%	275	100.00%
Females with post-secondary qualifications	100	52.63%	125	45.45%
Males with post-secondary qualifications	90	47.37%	150	54.55%

Source: Statistics Canada 1996 & 2001 Census (numbers may not add up due to rounding)

Labour Force

Labour force by activity	1996	2001
In the labour force, both sexes	485	445
Not in the labour force, both sexes	250	330
Total population 15 and over	740	775
Employed, both sexes	455	440
Unemployed, both sexes	40	10
Participation rate, both sexes	65.00%	57.00%
Unemployment rate, both sexes	8.00%	2.00%

Source: Statistics Canada 1996 & 2001 Census (numbers may not add up due to rounding)

Labour Force by Industry Division	1996	% of total	2001	% of total
Agriculture	60	12.50%	15	3.37%
Mining	25	5.21%	0	0.00%
Manufacturing	20	4.17%	50	11.24%
Construction	15	3.13%	25	5.62%
Transportation. & Utilities	30	6.25%	45	10.11%
Retail and Wholesale	100	20.83%	100	22.47%
Finance	10	2.08%	20	4.49%
Business & Community Services	180	37.50%	165	37.08%
Public Administration	20	4.17%	15	3.37%
Total All Industries	480	100.00%	445	100.00%

Source: Statistics Canada 1996 & 2001 Census (numbers may not add up due to rounding)

Trochu Labour Force By Industry - 2001



Labour Force by Major Occupational Groups	1996	%	2001	%
Management occupations	50	10.31%	20	4.49%
Business, Finances and administrative occupations	35	7.22%	75	16.85%
Natural and applied sciences and related occupations	10	2.06%	20	4.49%
Health occupations	50	10.31%	40	8.99%
Occupations in social science; education; government and religion	10	2.06%	40	8.99%
Occupations in art; culture; recreation and sport	10	2.06%	0	0.00%

Sales and service occupations	170	35.05%	95	21.35%
Trades; transport; equipment operators and related occupations	85	17.53%	90	20.22%
Occupations unique to primary industry	65	13.40%	20	4.49%
Occupations unique to processing; manufacturing and utilities	10	2.06%	40	8.99%
Occupations not elsewhere classified	0	0.00%	0	0.00%
Total - All Occupations (major groups)	485	100.00%	445	100.00%
Females - All Occupations	230	47.42%	190	42.70%
Males - All Occupations	255	52.58%	250	56.18%

Source: Statistics Canada 1996 & 2001 Census (numbers may not add up due to rounding)

Income

Family Income (Number of Families)	1996	%	2001	%
less than \$19,999	10	4.44%	35	14.00%
\$20,000 - \$39,999	95	42.22%	70	28.00%
\$40,000 - \$59,999	75	33.33%	105	42.00%
\$60,000 and over	45	20.00%	45	18.00%
Total number of families	225	100.00%	255	102.00%
Average family income	\$49,535		\$48,592	
Median family income	\$48,477		\$46,181	

Source: Statistics Canada 1996 & 2001 Census (numbers may not add up due to rounding)

Household Income (Number of Households)	1996	%	2001	%
less than \$19,999	65	17.33%	75	18.29%
\$20,000 - \$39,999	135	36.00%	100	24.39%
\$40,000 - \$59,999	100	26.67%	145	35.37%
\$60,000 and over	25	6.67%	70	17.07%
Total number of households	375	100.00%	410	100.00%
Average household income	\$41,296		\$43,027	
Median household income	\$37,565		\$42,425	

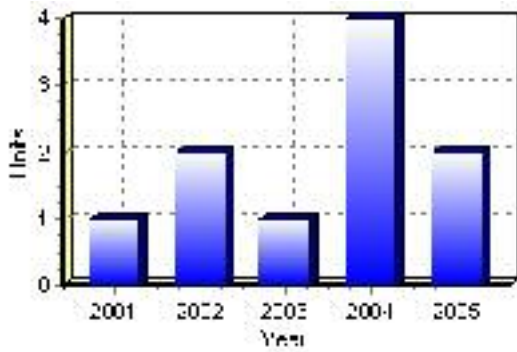
Source: Statistics Canada 1996 & 2001 Census (numbers may not add up due to rounding)

Building Permits

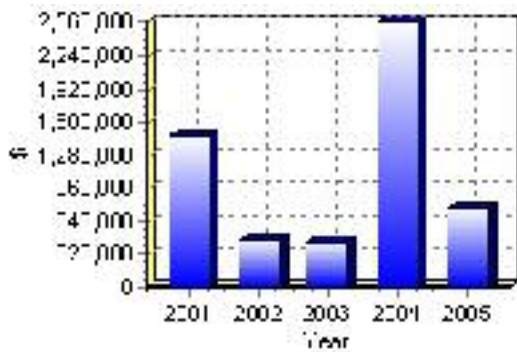
Total Building Permit Values	2001	2002	2003	2004	2005
Building Permits Value, Commercial	\$1,135,000	\$180,000	\$4,000	\$180,000	\$420,000
Building Permits Value, Industrial	\$100,000	\$0	\$287,000	\$101,000	\$0
Building Permits Value, Institutional	\$0	\$0	\$0	\$0	\$0
Building Permits Value, Residential	\$240,000	\$293,000	\$154,000	\$2,287,000	\$347,000
Building Permits Value, Total	\$1,475,000	\$473,000	\$445,000	\$2,568,000	\$767,000
Total Housing Starts	1	2	1	4	2

Source: Statistics Canada 2000-2004 Building Permits (numbers may not add up due to rounding)

Total Housing Starts



Value of Building Permits



Dwellings

Occupied Private Dwellings by Type	1996	% of total	2001	% of total
Apartments	0	0.00%	10	2.44%
Detached Duplexes	0	0.00%	0	0.00%
Movable Dwellings	25	6.67%	35	8.54%
Other single attached house	0	0.00%	5	1.22%
Row and semi-detached house	30	8.00%	30	7.32%
Single-detached house	305	81.33%	335	81.71%
Total number of occupied private dwellings	375	100.00%	410	100.00%
Private dwellings, owned	270	72.00%	305	74.39%
Private Dwellings, rented	110	29.33%	105	25.61%

Source: Statistics Canada 1996 & 2001 Census (numbers may not add up due to rounding)

Private Dwellings by Period of Construction	# of Dwellings	% of total
Period of construction, before 1946	60	14.81%
Period of construction, 1946 - 1960	105	25.93%
Period of construction, 1961 - 1970	35	8.64%
Period of construction, 1971 - 1980	105	25.93%
Period of construction, 1981 - 1990	55	13.58%
Period of construction, 1991 - 2001	45	11.11%
Total number of private dwellings constructed	405	100.00%

Source: Statistics Canada 2001 Census (numbers may not add up due to rounding)

Disclaimer: Information in this profile has been provided from a variety of external sources. Although every effort has been made to ensure the accuracy, currency and reliability of the content and data, AlbertaFirst.com Ltd. accepts no responsibility in this regard.

© AlbertaFirst.com Ltd., 2006.