

Strathmore

www.strathmore.ca

Welcome

to STRATHMORE

Alberta, Canada

Where Quality of Life is a Way of Life

Welcome to Strathmore. The Council and people of Strathmore are very proud of our community and what it has to offer you. As you search through our community profile, we hope that you get as excited about our community and its potential as we are. If you are looking to move to our community "Welcome Home". If you are just looking to visit, "Welcome to Strathmore", we know you will be back.

Throughout this profile you will see why more than 9600 people call Strathmore home. We are a community with all the amenities that family living desires, from essential services of health care including a hospital and paramedic ambulance service to educational services and major recreational facilities. You will discover the many businesses and business opportunities which keep more than half of our working population at home with jobs in and around Strathmore. You will uncover a town where community is spelled out with a capital "C", with our many volunteer organizations. If you are just looking to visit, we will welcome you with our down to earth hospitality at the many attractions in the community and area, which will bring you back time and time again.



Keith Schneider, Mayor

STRATHMORE AT A GLANCE

Population	9,653
Distance from Calgary	40 km. East on #1 Highway
Connecting Highways	#1, #9, #21, #24
LifeStyle	Best of Country Living/Big City Access



Area Overview

The Town of Strathmore is located 40 km east of the City of Calgary on the Trans Canada Highway. Strathmore is said to be one of Canada's fastest growing communities. Turning back the calendar to 1991, the community boasted a population of 4,185. In 2005, the community sits at 9,653.

Strathmore began as a community on July 28, 1883 when Canadian Pacific forces manually laid 6.38 miles of track across the prairies to set a record.

In 1905, with the development of the irrigation system, the original hamlet of

Strathmore was moved four miles north and centered around the 5,600 foot siding there. This move to its present location is what gave the town its legacy "the town that moved."

Since that time the town has "moved" in all directions. While the town has grown considerably over the years, the community's spirit grew along with it. This is a place where people look out for each other and where volunteering is a part of life.

Strathmore is a vibrant community with excellent sporting venues, schools, shopping and walking trails to enjoy with the family.

Strathmore offers a wide range of housing. You can select a location close to downtown, modern residential developments, brand new subdivisions, along with adult living communities. For the apartment dweller or those looking for a town house there is plenty to choose from in various locations around town.

If you are looking to re-locate to the Calgary area or looking to invest in a business opportunity, give Strathmore a look. Once you get here you will be impressed with what the community offers.

Enjoy what thousands of people have already realized - the friendly and modern atmosphere Strathmore Provides.



ALBERTA, THE BEST PLACE TO WORK, LIVE AND DO BUSINESS

The province of Alberta is a leader in the Canadian economy. Alberta has had the fastest growing economy in Canada over the past two decades, with real GDP growth averaging 3.7 percent per year. Highlighting Alberta's success in the past year is:

- Over \$73.2 billion in international exports of goods and services (2004)
- Manufacturing shipments of \$52.6 billion (2004)
- Creation of 40,000 new jobs in 2004 and 433,900 between 1994 and 2004
- Over \$103 billion in major capital projects are proposed, announced, under construction or recently completed (2004)

Source: [Alberta Economic Development](#)

Alberta's Positive Business Climate



- The lowest overall taxes in Canada
- No provincial sales tax
- No general capital or payroll taxes prevalent in other provinces and U.S. states
- A highly entrepreneurial and competitive business community
- A fiscally responsible government that has eliminated its provincial debt, demonstrating to investors the business-like attitude of the government
- A highly skilled, educated and motivated workforce that is the most productive in Canada. Source: [Alberta Economic Development](#)

Climate

Seasonal Average Temperatures

January	-13.8°C	7.2°F
April	3.2°C	61.9°F
July	16.6°C	61.9°F
October	5.2°C	41.4°F

Annual Precipitation

Average precipitation per year:
412.6 mm or 16.2 inches

Measurable bright sunshine:
332.9 days per year



Total hours of bright sunshine:
2,294.6 hours per year

Average wind speed: 14.8 kilometers per hour, from the West and Northwest

Total snowfall per year: 135.4 centimeters or 53.3"

Days with measurable snowfall: 62 days

Average number of frost-free days: 112 frost-free days per year

Source: [Environment Canada](#)

Community Services

Wild Rose Economic Development Corporation

Box 2159

2nd Floor, 203 3rd Avenue

Hilton Plaza, Strathmore, AB T1P 1K2

Toll Free Telephone: 1-888-881-9675

Telephone: (403) 934-6488

Facsimile: (403) 934-6492
Email: wildrose@wildrose.ab.ca
Website: www.gowildrose.com

Services include: career center for employers and employees, small business assistance, financing and referral. Alberta Human Resources and Employment is a provincial department that focuses on people skills and the workplace. They provide a broad range of service to both employees and employers. Human Resources & Skills Development Canada is a federal department that provides a broad range of services for employees and employers.

Strathmore & District Chamber of Commerce



Telephone: (403)-901-3175
Facsimile: (403)- 901-1785

Website: Strathmore and District Chamber of Commerce
Email: info@strathmoredistrictchamber.com

The Strathmore & District Chamber of Commerce holds regular Chamber meetings to provide networking opportunities for the development and promotion of local business. The Chambers objective is to promote and improve trade and commerce and the economic civil and social organization of Strathmore and District Businesses.

Municipal

Town of Strathmore



680 Westchester Road
Strathmore, Alberta T1P 1J1
Telephone: (403)-934-3133
Facsimile: (403)-934-4713

Mayor - Keith Schneider
council@town.strathmore.ab.ca
Town Manager - Dwight Stanford
dstanford@town.strathmore.ab.ca

- **The Strathmore Municipal Library** - is committed to providing a variety of educational, recreational, and cultural services to the residents of Strathmore and district, with special emphasis on developing programs to encourage young people to appreciate reading.
Seven internet workstations are available for public use.www.marigold.ab.ca
- Marigold Regional Library
- Tourist Booth - located at Dairy Queen on the Trans Canada Highway.

Provincial

- Attorney General Provincial Court Phone: 934-2151
- Alberta Municipal Affairs Phone: 310-0000
- Fish and Wildlife Division Phone: 934-3422
- Medical Examiner (Coroner) Phone: 934-3464
- Mental Health Phone: 934-5174
- Recreation & Parks Phone: 934-3133
- Hearthstone Child & Family Services Phone: 934-1706
- Agriculture Phone: 934-3616

Federal

- Canada Post Corporation Phone: 934-3575
- R.C.M.P. Phone: 934-3535

Community Lifestyle

PEACE OF MIND

Strathmore is part of the Wild Rose Region. Many residents and business owners choose to locate in the Region because of the safety and security of small town living. As indicated by the below table, crime statistics are substantially lower in the region than typical of a larger metropolitan center like the City of Calgary.

CRIME RATE COMPARISON		
	Wild Rose Region*	Calgary*
Fornicade	0	0.51
Assault	7	16
Robbery	0	2
Break and Enter	6	17
Theft of a Vehicle	5	11
Theft from a Vehicle	6	19
Mischief Offences	10	21

* Per 1,000 residents

Sources: RCMP Crime Statistics 2002, City of Calgary Police Service 2002

Strathmore offers residents rural community values and an affordable country lifestyle close to the amenities within the region and the neighboring metropolitan centers. Despite favorable economic growth, it's still very affordable to buy a home and live in the Wild Rose Region.

The region offers the most affordable local utilities, based on comparison with Calgary and area utilities. In the Wild Rose Region, local utilities (water, sewer and garbage) are approximately 26% lower than the average of communities in and around Calgary (Benchmarks Nichols Applied Management, 2000).

RECREATION

Strathmore Family Center

160 Brent Boulevard, Strathmore, AB

Telephone: 403-934-4772

Facsimile: 403-934-4779



The Family Centre acts as hub of recreational programs in Strathmore. Built in 1990 , it houses the Olympic and NHL sized rinks, two meeting rooms, and a convention room for up to 250 people. The Gold Arena has 700 seating in bleachers, with the potential for 500 more seats on the floor.

It also acts as a one-stop centre to access the many team sport organizations that run programs for youth and adults year round. Its present claim to fame is the Home of the UFA Bisons Midget AAA team, which brought home the 1999 Mac Tournament championship. This is one example of the success of sports programs in Strathmore.

Strathmore Aquatic Center

130 Brent Boulevard Strathmore, AB

Telephone: 403-934-3325

Facsimile:403-934-2425



The Aquatic Centre sits just outside the Family Centre and is usually teeming with active children throughout the year. Our pool is a 25 meter indoor pool, with 6 lanes and a 1m diving board in the deep end (4.7m). It offers many services in the community such as public, family or seniors swim times as well as Swimming Lessons, Lane Swimming, Aqua-Size or Deep Water Running Classes and private rentals.

Strathmore Civic Centre

120 Brent Boulevard, Strathmore, AB

Telephone: 403-934-4772



The Civic Centre is designed to house a full spectrum of events ranging from weddings to seminars. Also available for rent is the Chuck Mercer meeting room, as well as a small community kitchen or the commercial kitchen for larger events. The Town offers reasonable rental rates and if you have a smaller event the hall can be sectioned off in thirds.

Strathmore Curling

Rink

180 Brent Boulevard, Strathmore, AB

Telephone: 403-934-2996

The Town of Strathmore's 4-sheet Curling Rink is full of activity in the winter months with many tournament's going on. The rink is leased to the Strathmore Curling Club, with Junior, Ladies, Men's and Mixed Curling Leagues.



Other Recreational Facilities

located in the Town of Strathmore are:

- | | | | |
|--------------------|---------------|---------------|-----------------|
| Baseball Diamonds | Tennis Courts | Horsehoe Pits | Campgrounds |
| Bike/walking Paths | Bowling Alley | Rodeo Grounds | Skateboard Park |

GOLF COURSES

Golf's popularity among old and young alike is addressed in Wild Rose Region through a variety of fun-to-challenging courses.



Strathmore Golf Course

is a semi-private 18 hole facility located in Strathmore. Driving Range.
Call for Tee Times: 403-934-2299

80 Wheatland Trail - 2 km North of Hwy #1, 25 minutes East of Calgary



Oxbox Country Golf Course

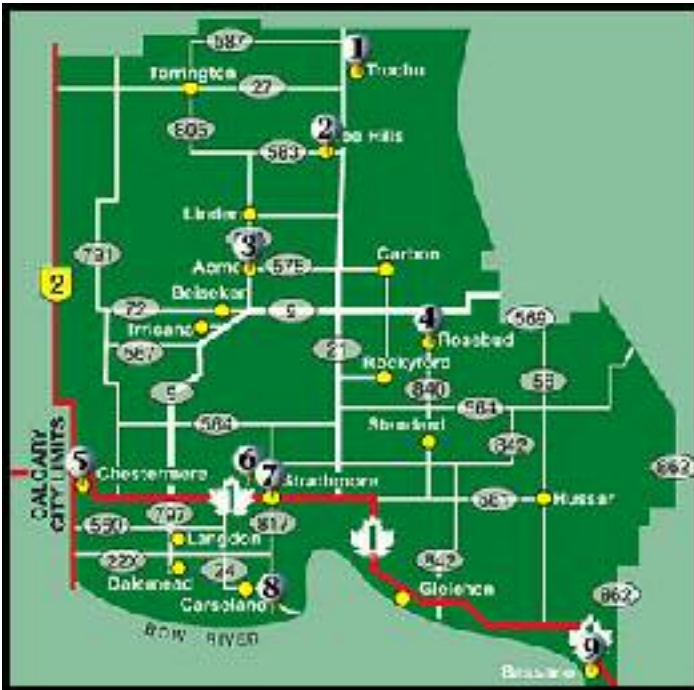
Is located just 3.2 km North and 2.4 km West of Strathmore with 9 holes at 3300 yards and a Par 36.

It is open to the public and has RV Parking available.

Want to know what the weather conditions are like before you head out to play? Check the [weather report](#) online.

Click on a golf ball below to read more about each course.

GOLF GETAWAYS					
Course	Location	Holes	Yardage	Contact Phone	Website
Trochu Golf Club	Trochu	9	2,843	(403) 442-2747	www.tee-off.ca/courses/sb183.htm
Acme and District Golf Club	Acme	9	3,003	(403) 546-4720	www.tee-off.ca/courses/sb100.htm
Three Hills Golf Club	Three Hills	9	3,001	(403) 443-5265	www.tee-off.ca/courses/sb179.htm
Boscono Sage & Thistle	Boscono	9	2,660	(403) 641-4016	
Lakeside Golf Club	Chestermere	18	6,700	(403) 569-9155	www.lakesidegreens.com/
Aokiniakway Golf Club	Rosebud	9	1,779	(403) 677-2250	www.tee-off.ca/courses/sb006.htm
Oxbox Country Golf	Strathmore	9	3,026	(403) 931-3693	www.oxboxgolf.ca
Strathmore Golf Club	Strathmore	18	6,600	(403) 934-2290	www.calgaryplus.ca/profile/00327/
Spengrass Golf Club	Carleton Place	18	6,671	(403) 901-1134	



COMMUNITY ORGANIZATIONS

Service Clubs

Lions	Kinsmen	Knights Of Columbus	Elks
Order of the Royal Purple	Royal Canadian Legion	Strathmore Air Cadet Squadron	Future 25

Recreational Clubs

Fun Country	Happy Gang	Strathmore	Strathmore Golf
-------------	------------	------------	-----------------

Riding Club	Society	Archery Club	Club
Strathmore Curling Club	Strathmore Theatre Players	Strathmore Musical Arts Society	...and many more

RELIGIOUS ORGANIZATIONS



Strathmore United Church * Strathmore Alliance Church
 Baha'i Group of Strathmore * Lord of All Lutheran Church
 Sacred Heart Catholic Church * Strathmore Full Gospel Church
 Hope Community Covenant Church * Kingdom Hall of Jehovah's Witnesses
 St. Michael & All Angels Anglican Church * The Church of Jesus Christ of Latter Day Saints

ANNUAL EVENTS & ATTRACTIONS

Heritage Days & Running of the Bulls



August Long Weekend CPRA Sanctioned Pro Rodeo & Professional Chuckwagon Finals, Running of the Bulls, Midway, Arts & Crafts Sale, Parade, Country Fair Bench Show, Beer Gardens, Two Loonie Saloon, Cabarets and much more. Contact the Strathmore & District Agricultural Society at 934-5811, or visit their web site at: strathmoreroдео.com.

Annual Kinsmen Tree Burning

Mid-January the whole Town gathers at Kinsmen Lake for the Annual Christmas Tree Burning. There are free hot dogs & marshmallows to roast as well as hot chocolate. Skating and other activities are free for the whole family and if possible please bring a donation for the Food Bank.

Annual Spring & Fall REVS

* Registration - * Education - * Volunteer - * Services
 Come on out, Sign up, Support your Local Community Clubs.
 For more information contact Kelly or Cheryl at 934-4772

Strathmore Fun Runners Annual Car Show & Shine



This annual event held in Kinsmen Park is a car show that has a wide range of vehicles including antiques and muscle cars. A '50s - '60s Dance is held in the evening. Call 934-5707 or 850-2333 for more information or visit our website at: funrunners.ca

Spring Festival

The Strathmore & District Chamber of Commerce hosts a "Street Festival" in late May or early June, where merchants, food vendors and entertainers set up booths outdoors. Come join a weekend of fun. Contact the Strathmore & District Chamber of Commerce at 901-3175 to book a table or for more information.

Canadian All Girls Rodeo

Held annually in early June. Contact Brenda Knight at 934-4416 for more information.

Strathmore High School Rodeo

Football and Baseball are great but it takes real courage to compete in rodeo. See these young adults ride stock that would make most people tremble in fear. High School rodeo teaches character and gives young people a chance to do something positive.

Strathmore Farmer's Market

Runs every Friday, from 4:00 p.m. - 8:00 p.m., June through September at Kinsmen Park. Alberta grown plants, berries, produce, home baking and B.C. fruit, as well as handcrafted gifts.



Canada Day Celebrations

July 1st - Kinsmen Park Opening Ceremonies - Color Guard, Canoe Races, Chataqua, Food Booths, Bands, Fireworks and much, much more. Call the Town of Strathmore at 934-3133 for more information, or if you would like to volunteer to help with this event.

Strathmore Women's Triathlon

Proud to be part of Triathlon Canada's "National Women's Triathlon Series", women from Strathmore and all over Canada will compete in this sprint distance event.

ACCOMMODATIONS

- Best Western Hotel (81 units)
- Econo Lodge (41 units)
- Leroy's Motel (42 units)
- Strathmore Hotel (15 units)
- Travel Lodge (121 units)
- Super 8 Hotel (50 units)



RESTAURANTS



A & W	A-1 Pizza	Boston Pizza	Pizza 249	Dairy Queen
Domino's Pizza	Kentucky Fried Chicken	The Little Village Cafe	More Than Ice Cream	Joey's Only Seafood
Tim Horton's	Old Mill Pub	Mr. Sub	Quizno Subs	It's a Pizza
Rocky's Bakery	Smiley's Restaurant	Smitty's Restaurant	Roadhouse Restaurant	Pizza Hut Express
Strathmore Palace	Strathmore Station	Bill's Place & Pub	Strathmore Husky House	McDonald's Restaurant
Subway	TreeTops Boulevard Café			

Economic Base

Oil, Natural Gas, Agriculture, Retail & Manufacturing all contribute to the major economic base for the Strathmore area.

Agriculture

Strathmore is located in an excellent agricultural area. There are many large feedlots in the area, as well as cattle operations, all located outside the Strathmore area. Grain farming with the use of irrigation is also prominent.

Retail

The Town of Strathmore has an excellent business sector in the downtown area. There are numerous strip malls both downtown and among the residential communities.

The highway commercial district is also experiencing a boom as many franchise businesses are setting up along the highway.



Construction



The Town of Strathmore has been experiencing very rapid growth in the residential sector. As of September 2005 - 168 dwelling units have been built in Strathmore.

We can offer affordable starter homes to upper end luxury homes on large country

residential lots.

Oil and Gas

During the last few years oil & gas exploration has increased. There will be many more wells drilled in the area in the future..

Livestock Auction

The Calgary Stockyards Strathmore is a traditional livestock auction marketing facility located 1 mile west of Strathmore on the Trans Canada Highway. CSY – Strathmore auctions cattle from across Western Canada in traditional form on a year round basis, and has been in business for 100 years!

CSY made the move to Strathmore in 1990 when the cost of operating in Calgary, combined with cattle producers' reluctance to haul cattle into the growing city prompted the move East of Calgary on the Trans Canada Highway, where they have been operating ever since.

The Calgary Stockyards Strathmore employs numerous residents of Strathmore and surrounding area farmers on a full and part-time basis. CSY is a strong supporter of local business in the form of gasoline, vehicles, hotels, restaurants, operating equipment and supplies.



The Calgary Stockyards holds special cattle sales throughout the year for various groups including the Strathmore Ranchers' Association. To date, the Calgary Stockyards have marketed over 1,000,000 head of cattle through their Strathmore facility. If you would like more information please visit us at www.calgarystockyards.com

Economic Facts

Major Businesses/Products/Services



The Town of Strathmore has an excellent business sector both in the downtown area, as well as along the highway. There are numerous strip malls, as well as manufacturing and industrial related businesses in our industrial park.

Grocery Stores * Drug Stores * Canadian Tire * Landmark Feeds * G & S Conveying
* Western Bending and Manufacturing Ltd * Home Hardware * Restaurants * Hotels
* Pure Country Meats * Building & Farm Supply Businesses

Financial Institutions

Chinook Credit Union
Royal Bank of Canada
Alberta Treasury Branch Canadian Imperial Bank of Commerce

Property Value Estimates

Lot Only (approx)

- Residential - \$55,000 to \$85,000
- Industrial - \$125,000 per acre
- Highway/Commercial - \$250,000 per acre

Purchase or Lease (approx)

- Residential - 1200 sq ft Bungalow:
 - Purchase from \$180,000 + up
 - Lease from \$900/mo + up
- Industrial \$6 to \$9 per sq. ft.
- Highway/Commercial \$18 to \$25 per sq. ft.

2004 Development Permits

- Residential - 236
- Commercial - 16
- Industrial - 10
- Institutional - 3

- **Total # = 265**
- **Total \$ Amount = \$30,352,730**



Demographics

Strathmore has a diverse population and reliable labor force, making for consistently strong local growth trends.

Population Age Distribution

- The population of Strathmore is 9653
- Males outnumber females in age groups 0-5, 6-11, 12-17, 018-19, 20-24, 25-34, 45-54
- Females outnumber males in age groups 35-44, 55-64, 65-49, 70-79, 80-100+
- 89% of Strathmore's population is under 65 years old
- 66% is under 45 years old
- 36% is under 25 years old
- Projected population for 2006 - slightly over 10,000
- Trading Area 24,000

Labor Force

- Unemployment Rate (Economic Region 820 -January, 2003) 4%
- Average Family Income in Strathmore (2001 Federal Census) \$59,705
- Average Household Income in Strathmore (2001 Federal Census) \$54,447

Workers Compensation

- Average cost per \$100 payroll in Manufacturing: \$3-\$4
- Average cost per \$100 payroll in Office Work: \$.40
- Maximum weekly benefit \$1,176.92

For additional details on the program see:[Workers Compensation Board](#)

Employment Insurance

- 55% of your average insurable earnings to a maximum of \$413 per week

For additional information on the program see:[Employment Insurance Information for Employers](#)

Research Base



Being a close neighbor of the City of Calgary, companies located in Strathmore have access to a broad range of research facilities located in an around the City. For additional information on the following research facilities, simply click on the name to access the link.

- Alberta Research Council
- Calgary Technologies Inc.
- Edmonton Economic Development Corporation
- Food Processing Development Centre
- TRILabs
- WurcNet

Further In-Depth Information

- Municipal Profiles developed by Alberta's Ministry of Municipal Affairs
- Alberta - A Wealth of Opportunity developed by Alberta Economic Development
- Alberta Economic Highlights developed by Alberta Economic Development
- Alberta Economic Outlook developed by Alberta Economic Development
- Alberta Export and Trade developed by Alberta Economic Development
- Tourism Reports developed by Alberta Economic Development
- Alberta Finance Statistics also contains much information which may be useful.

Education

Strathmore is part of the [Golden Hills Regional Division No.75](#) and also [Christ the Redeemer Catholic Schools](#).

Strathmore Education choices include:

Wheatland Elementary School



Brentwood Elementary School



Crowther Memorial Junior High



The Strathmore High School



Store Front School



Golden Hills Virtual School



- Toddle Inn Day Care
- Strathmore & District Playschool
- Montessori Preschool
- Wheatland Further Education

SEPARATE SCHOOLS

Sacred Heart Academy ~ Elementary

Holy Cross Collegiate ~ Junior/Senior High

Emergency Services
Fire Protection

Strathmore is served by a volunteer fire department. The Fire Chief can be reached at 934-3133 or 934-3022

Police Services

Strathmore is served by a local, 18-member detachment of the Royal Canadian Mounted Police (RCMP) (Tel: 403-934-3535). The

Town also has 2 Special Constables who handle Bylaw Enforcement Services, and 1 part time Animal Control Officer.

Ambulance Services

Strathmore has a paramedic ambulance service that is located adjacent to the hospital (Tel: 403-934-3639). Along with the Ambulance service the hospital also uses the STARS Helicopter.

Health Care

Strathmore Hospital



Strathmore is serviced by the [Calgary Regional Health Authority](#)

The Strathmore & District Health Care Centre is part of a regional health care system, and has 25 active-care beds and 23 extended-care beds.

Telephone:(403) 934 0126

Facsimile: (403) 934 0173

200 Brent Blvd., Strathmore, Alberta T1P 1J9

Signage directing you to the Diagnostic Imaging Department is located on the main floor, inside the main entrance of the Strathmore Health Unit.

Professional Services include:

- Physicians
- Radiologists
- Gerontologist
- Recreation Therapist
- Respiratory Therapist
- Orthotics Consultant
- Orthopaedic Consultant
- Laboratory Consultant
- Pharmacists
- Dietician
- Dentists
- Chiropractors



Health unit services are also provided out of the hospital. Strathmore also has 2 medical clinics, 1 nursing home and 2 seniors

housings.

Strathmore & District Handi-Bus



Strathmore & District Handi-Bus provides safe, courteous, timely and cost-effective transportation service to the elderly and/or handicapped residents of the Town of Strathmore and Wheatland County.

Telephone: 403-934-3418

[Enter here](#) for more information.

Key Contacts for Business Development

Municipal



Town of Strathmore
680 Westchester Road
Strathmore, Alberta
T1P 1J1
Tel: 403-934-3133
Fax: 403-934-4713

Mayor Keith Schneider
Email: council@strathmore.ca

Town Manager Dwight Stanford
Email: dstanford@strathmore.ca

Provincial

Alberta Economic Development - Calgary Office

Contact: Walter Valentini, Regional Manager
Suite 300, 639 - 5th Avenue SW
Calgary, Alberta
T2P 0M9
Telephone: (403) 297-8920
Facsimile: (403) 297-6168
Website: www.alberta-canada.com
E-Mail: walter.valentini@gov.ab.ca
E-Mail: dianne.fitzsimmons@gov.ab.ca



Member of the Legislative Assembly (MLA)

Contact: Hon. Lyle Oberg

Constituency Office P.O. Box 873 403 - 2nd Avenue West Brooks, AB T1R 1B7 Phone: (403) 362-6969 Fax: (403) 362-5923
strathmore-brooks@assembly.ab.ca Legislature Office #402 Legislature Annex 9718 107 Street Edmonton, AB T5K 1E4 Phone:
(780) 644-2292 Fax: (780) 644-2293

Federal

Member of Parliament (MP)

Contact: Kevin Sorenson

Crowfoot Constituency - Conservative Party of Canada

Parliamentary Address

House of Commons

Ottawa, Ontario K1A 0A6

Telephone: (613) 947-4608

Fax: (613) 947-4611

E-Mail: Sorenson.K@parl.gc.ca

Constituency Address

4945 - 50th Street

Camrose, Alberta T4V 1P9

Telephone: (780) 608-4600 1-800-665-4358

Fax: (780) 608-4603

Location

Highway Location

Easy access to Calgary, Medicine Hat, Edmonton, Lethbridge and Drumheller. TransCanada Highway links to Hwy.2, 21, 22x, 24 and 9. Secondary Hwy 817 intersects TransCanada Highway along the west side of downtown Strathmore.

Elevation

982m, 3192 feet (Strathmore)1,048m, 3,440 feet (Calgary - Central Park)

Longitude & Latitude

Latitude: 51 degrees 3' Longitude: 113 degrees 23'

Time Zone

Mountain Standard Time (MST)

GMT -7 hours (Daylight saving, April to October.)

Strathmore's Proximity to other Locations

Driving Distance from Strathmore	km	miles	Time Required
Calgary (city centre)	40	25	36 minutes
Calgary International Airport	42	26	36 minutes
Edmonton, Alberta	347	215	3 hours, 34 minutes
Vancouver, British Columbia	1007	626	11 hours, 47 minutes

Toronto, Ontario	3370	2094	34 hours, 54 minutes
United States Border (Coutts, Alberta crossing)	348	216	3 hours, 50 minutes

It is important to note that time required is calculated based on 'ideal' traffic and weather conditions.

****Distance is measured from city centre to city centre****

 **Alberta Map**

 **Strathmore Location Map**

 **Town of Strathmore Map**

Post Secondary Education

Building Futures

The Town of Strathmore is just minutes away from world-class education facilities. Strathmore's proximity to Calgary allows students the opportunity to attend post-secondary institutions with minimal travel.

For information on Educational Opportunities in close proximity to Strathmore visit the school's corresponding website:



Educational Facility	Location	Telephone	Web site
University of Calgary	Calgary, AB	403-220-5110	www.ucalgary.ca
University of Lethbridge	Lethbridge, AB	403-320-5700	www.uleth.ca
S.A.I.T.	Calgary, AB	403-284-7248	www.sait.ab.ca
Mount Royal College	Calgary, AB	403-240-6111	www.mtroyal.ab.ca
AB College of Art & Design	Calgary, AB	403-284-7600	www.acad.ab.ca
Devry Canada	Calgary, AB	403-235-3450	www.devry.ca
Olds Agricultural College	Olds, AB	1-800-661-6537	www.oldscollege.ab.ca/
Red Deer College	Red Deer, AB	403- 342-3300	www.rdc.ab.ca/

Other Educational Opportunities within close proximity are:

Prairie Bible Institute offers a wide range of programs, including ministry, aviation, drama, wilderness leadership and music, to students from over 20 countries around the world. Students can earn a one-year certificate or a four-year degree.

Covenant Bible College is an eight-month program of Christian discipleship. The Strathmore campus is one of three campuses, with the other two located in Colorado and Ecuador.

Rosebud School of the Arts offers a unique blend of practical and theoretical training in the performing arts. In addition to the arts program, Rosebud provides apprenticeship programs in the hospitality industry.

Taxation

	<u>Residential</u>	<u>Non-Residential</u>
2005		
Municipal Tax Rate	9.5640	9.5640
Education - Alberta School Foundation Fund Tax Rate	3.6070	5.2340
Education Opted Out Tax Rate	3.607	5.234
Seniors Lodge Accommodation Tax Rate	.0370	.0370

Mill Rates	2004	2003	2002
Residential	12.782	13.19	12.832
Commercial/Industrial	15.328	16.14	15.517

Latest Total Assessment:

2005: \$680,000,000

2003: \$528,130,039

2002: \$462,500,000

Transportation

Air Services

The nearest commercial and air freight services are at Calgary International Airport.

- 42 km from Strathmore
- For a listing of non-stop passenger destinations visit Passenger Non-stop Destinations
- Provides a single hub location that specializes in a wide range of services including receiving, transferring, storing, and distributing air, rail and highway cargo both domestically and internationally
- The airport offers 360 degree market penetration for International cargo & passenger carriers. 50 million people can be



reached within a days travel.

- Calgary is the 'ONLY' Canadian airport strategically located on the cross roads of the Trans Canada (East-West) and the CanaMex Highways (North-South)[Cargo Information](#)

Highways




Easy access to Calgary, Medicine Hat, Edmonton, Lethbridge and Drumheller. TransCanada Highway links to Hwy.2, 21, 22x, 24 and 9. Secondary Hwy 817 intersects TransCanada Highway along the west side of downtown Strathmore.

Vehicle Counts:

Trans Canada Highway 2003:1 mile east of Highway 24 intersection - Yearly Average - 14,106/day

For manufacturers and producers who need assistance to determine the most cost-effective and efficient transportation method, AlbertaPORT provides a "virtual" gateway to assist with transportation logistics at [Alberta-Canada](#).

Bus Service

- [Cardinal Coach Lines](#) Motor coach commuter service between Strathmore and downtown Calgary operating Monday through Friday except holidays.
Telephone:403-531-3940
- [Greyhound Canada](#)  provides regularly scheduled bus service. 1-800-661-8747.

Taxi Service

- Economy Taxi - 888-9058
- Strathmore Taxi - 934-4474

Couriers & Postal

- Big "S" Courier
Telephone: 403-934-3710
- Monarch Messenger
Telephone: 403-279-4440

Canada Post, Purolator, UPS and FedEx all provide delivery services for Strathmore. Canada Post fills a vital need in the region providing cost-effective and timely mail delivery. In its mission to provide innovative physical and electronic delivery solutions creating value for its customers, Canada Post works with its business customers to ensure their mail communication needs are achieved.

In 2001, Canada Post received an on-time, combined service performance score of 96.4% on properly prepared letter mail.

For more information on service in Strathmore contact: [Canada Post](#),[Purolator](#),[UPS](#) & [FedEx](#)



Utilities

ELECTRICITY & NATURAL GAS are deregulated in Alberta.

The Alberta government provides a Web site to provide information to assist consumers to choose the appropriate provider for their residence or business. To learn more about electrical or natural gas providers visit [Customer Choice](#).

Regulated Rate Providers for Community of Strathmore are:

Electrical Power: [FortisAlberta](#)
310-9473

[Epcor](#)
310-4300

Natural Gas: [Direct Energy Services](#)
245-7838

[Atco](#)
310-5678

COMMUNICATIONS



Cable Television: [Shaw](#)
716-6000

Telephone: [Telus Communications](#)
310-2255

Internet Service: [Shaw](#)

[Telus Communications](#)
1-877-310-4NET (4638)

Strathmore has access to:

All the major radio stations from Calgary and Q91 radio station, which broadcasts from Drumheller.

All TV stations broadcasting from Calgary.

Local/Regional Newspapers

Name	Phone Number	Fax Number
The Strathmore Standard	(403) 934-3021	(403) 934-5011
The Calgary Sun	(403) 410-1010	(403) 250-4180
The Calgary Herald	(403) 235-7100	(403) 235-7379

WATER, WASTE & SEWER MANAGEMENT

Water Supply

Water Source - Irrigation from the Bow River Via W.I.D. Canal

Reservoir Capacity (Raw Water) - 220 million gallons

Reservoir Capacity (Potable Water) - 1.7 million gallons

Pumping Capacity - 114,000 gallons/hour

Average Line Pressure - 40-60 PSI

Average Daily Summer Consumption of Potable Water: 800,000 gallons/day of potable water.

Irrigation water is available in some areas of Town during the summer.

Water Restrictions - Contact the Town Office



Alberta's commitment to water resources is three-fold: a safe, secure drinking water supply, healthy aquatic ecosystems, and reliable, quality water supplies for a sustainable economy.

[Alberta Environment](#) has developed water programs that include studying, monitoring and testing of water sources. They have established guidelines to ensure quality standards for the many uses of water, and programs to protect ecosystems and enforce regulations.

Alberta has the most stringent drinking water program in the country and was one of the first provinces to fully adopt the [Canadian Guidelines for Drinking Water Quality](#) as a minimum standard. Alberta Environment strives for continuous improvement in its program and works closely with [Alberta Health and Wellness](#) to ensure Albertans continue to enjoy high-quality drinking water.

Waste Water Management

The Town of Strathmore boasts a state-of-the-art tertiary treatment plant that opened in August 2001. Few towns the size of Strathmore has this type of technology for the treatment of wastewater. The plant enables the Town to produce high quantity treated effluent that meets the stringent standards required by Alberta Environment - the same standards required by the cities. The plant is capable of serving a population of about 13,000, and due to the type of design, more components can be added to serve a growing community.

Provision for Disposal of Chemicals:

Year-Round Toxic Waste Services at Strathmore Recycle Facility.

Billing

Town Office [Town of Strathmore](#)

Telephone: 403-934-3133

Service:

[EPCOR Water Services](#)

Telephone: 403-934-9440

Garbage Collection

Industrial: By Contract Agreement

Commercial: By Contract Agreement

Residential: By Contract Agreement - Weekly Pickup provided by H & H Huxted Ent.

Recycle

Town of Strathmore Recycling Facility

101 Slater Way, Strathmore, Alberta

Telephone: 403-934-0087



Most Albertans already participate in waste reduction or recycling in some way. From a local bottle drive to backyard composting, Albertans are participating in waste reduction activities throughout the province. Indeed, waste reduction and recycling have become part of every day life, not just in Alberta, but throughout North America. While these individual actions of Albertans are helping to reduce the amount of solid waste produced, some local governments and other organizations have decided to establish community-wide programs for waste reduction and recycling. That is why the Town of Strathmore has undertaken to establish a recycling facility for the Town and local residents. Our facility has been in operation since January 15, 2003, and we have enjoyed excellent support from area residents.

Visit [Town of Strathmore](#) link for information on this service.

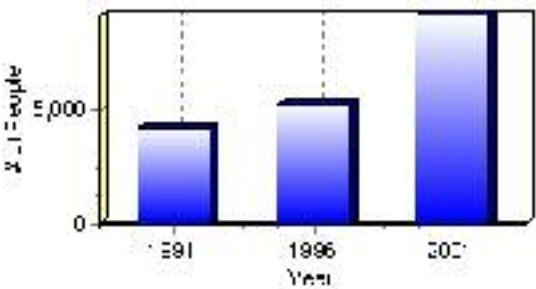
Population

Total Population

Population 2004*	9,115
Population 2003*	8,640
Population 2002*	8,022
Population 2001**	7,620
Population 2000*	7,165
Population 1996**	5,282
Population 1991**	4,185
Population % change 1991-1996	20.77%
Population % change 1996-2001	34.16%

* Source: Official Population List, Alberta Municipal Affairs
** Source: Statistics Canada 1991, 1996, & 2001 Census

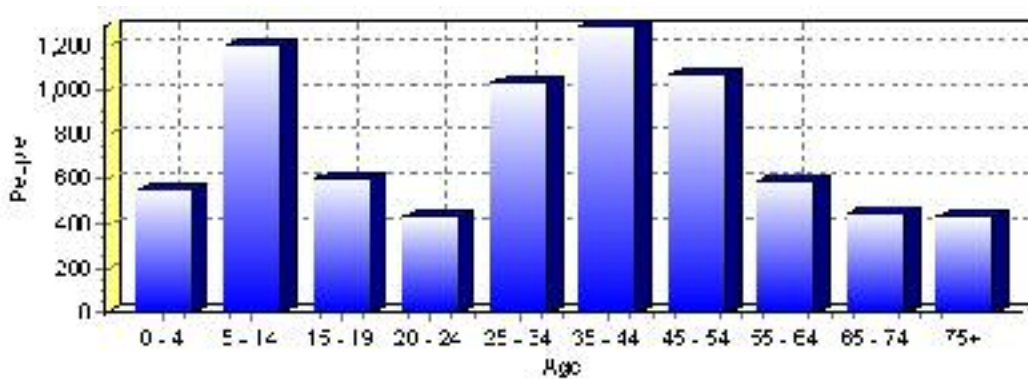
Total Population 1991-2001



Population by Age and Gender	1996 Male	1996 Female	1996 Total	2001 Male	2001 Female	2001 Total
Age 0 - 4	200	190	390	270	280	550
Age 5 - 14	485	465	950	625	575	1,200
Age 15 - 19	225	225	450	315	285	600
Age 20 - 24	150	120	270	220	210	430
Age 25 - 34	320	365	685	520	515	1,035
Age 35 - 44	460	480	940	645	645	1,290
Age 45 - 54	315	315	630	530	540	1,070
Age 55 - 64	175	165	340	285	310	595
Age 65 - 74	165	160	325	225	230	455
Age 75 and older	100	195	295	160	270	430
Total All Persons	2,585	2,695	5,280	3,775	3,840	7,615

Source: Statistics Canada 1996 & 2001 Census (numbers may not add up due to rounding)

Strathmore Population by Age Group (2001)

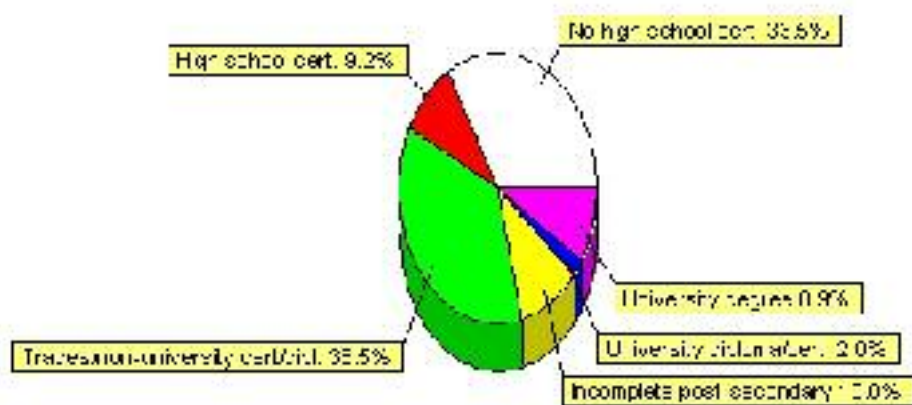


Education Statistics

Highest level of schooling for Population 20yrs and older	2001	%
People without high school certificates	1,730	33.49%
People with high school certificates	475	9.20%
People with trades or non-university certificate or diploma	1,885	36.50%
People with post-secondary education (not completed)	515	9.97%
People with university diploma/certificate	105	2.03%
People with university degree	460	8.91%
Total Population 20 years and older	5,165	100.00%

Source: Statistics Canada 2001 Census (numbers may not add up due to rounding)

Strathmore Highest Level of Schooling 2001



Population with Post Secondary Qualifications	1996	%	2001	%
Agriculture and biological sciences	110	7.59%	170	6.88%
Commerce, management and business administration	245	16.90%	535	21.66%
Educational, recreational and counseling services	240	16.55%	270	10.93%
Engineering and applied science tech. and trades	445	30.69%	720	29.15%
Engineering and applied sciences	30	2.07%	40	1.62%
Fine and applied arts	85	5.86%	120	4.86%
Health professionals, science and technologies	130	8.97%	290	11.74%
Humanities and related fields	70	4.83%	150	6.07%
Mathematics and physical sciences	25	1.72%	25	1.01%
Social sciences and related fields	55	3.79%	150	6.07%
Other and/or no specialization	0	0.00%	0	0.00%
Total people with post secondary qualifications	1,450	100.00%	2,470	100.00%
Females with post-secondary qualifications	710	48.97%	1,230	49.80%
Males with post-secondary qualifications	740	51.03%	1,240	50.20%

Source: Statistics Canada 1996 & 2001 Census (numbers may not add up due to rounding)

Labour Force

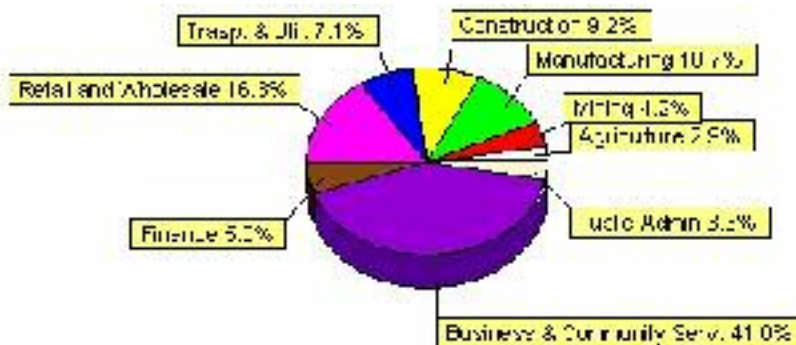
Labour force by activity	1996	2001
In the labour force, both sexes	2,725	4,220
Not in the labour force, both sexes	1,145	1,530
Total population 15 and over	3,870	5,750
Employed, both sexes	2,620	4,050
Unemployed, both sexes	100	170
Participation rate, both sexes	70.00%	73.00%
Unemployment rate, both sexes	3.00%	4.00%

Source: Statistics Canada 1996 & 2001 Census (numbers may not add up due to rounding)

Labour Force by Industry Division	1996	% of total	2001	% of total
Agriculture	85	3.15%	120	2.86%
Mining	115	4.27%	175	4.17%
Manufacturing	215	7.98%	450	10.71%
Construction	205	7.61%	385	9.17%
Transportation. & Utilities	270	10.02%	300	7.14%
Retail and Wholesale	480	17.81%	685	16.31%
Finance	130	4.82%	210	5.00%
Business & Community Services	1,020	37.85%	1,720	40.95%
Public Administration	185	6.86%	140	3.33%
Total All Industries	2,695	100.00%	4,200	100.00%

Source: Statistics Canada 1996 & 2001 Census (numbers may not add up due to rounding)

Strathmore Labour Force By Industry - 2001



Labour Force by Major Occupational Groups	1996	%	2001	%
Management occupations	245	9.11%	430	10.24%
Business, Finances and administrative occupations	420	15.61%	665	15.83%
Natural and applied sciences and related occupations	130	4.83%	205	4.88%
Health occupations	95	3.53%	170	4.05%
Occupations in social science; education; government and religion	200	7.43%	265	6.31%
Occupations in art; culture; recreation and sport	40	1.49%	30	0.71%

Sales and service occupations	785	29.18%	1,215	28.93%
Trades; transport; equipment operators and related occupations	530	19.70%	840	20.00%
Occupations unique to primary industry	140	5.20%	205	4.88%
Occupations unique to processing; manufacturing and utilities	110	4.09%	170	4.05%
Occupations not elsewhere classified	30	1.12%	20	0.48%
Total - All Occupations (major groups)	2,690	100.00%	4,200	100.00%
Females - All Occupations	1,255	46.65%	1,920	45.71%
Males - All Occupations	1,435	53.35%	2,280	54.29%

Source: Statistics Canada 1996 & 2001 Census (numbers may not add up due to rounding)

Income

Family Income (Number of Families)	1996	%	2001	%
less than \$19,999	40	3.15%	105	6.29%
\$20,000 - \$39,999	385	30.31%	430	25.75%
\$40,000 - \$59,999	350	27.56%	540	32.34%
\$60,000 and over	495	38.98%	730	43.71%
Total number of families	1,270	100.00%	1,805	108.08%
Average family income	\$55,595		\$64,055	
Median family income	\$52,109		\$59,705	

Source: Statistics Canada 1996 & 2001 Census (numbers may not add up due to rounding)

Household Income (Number of Households)	1996	%	2001	%
less than \$19,999	305	16.58%	325	11.86%
\$20,000 - \$39,999	535	29.08%	545	19.89%
\$40,000 - \$59,999	445	24.18%	630	22.99%
\$60,000 and over	160	8.70%	1,250	45.62%
Total number of households	1,840	100.00%	2,740	100.00%
Average household income	\$48,035		\$60,267	
Median household income	\$43,881		\$54,477	

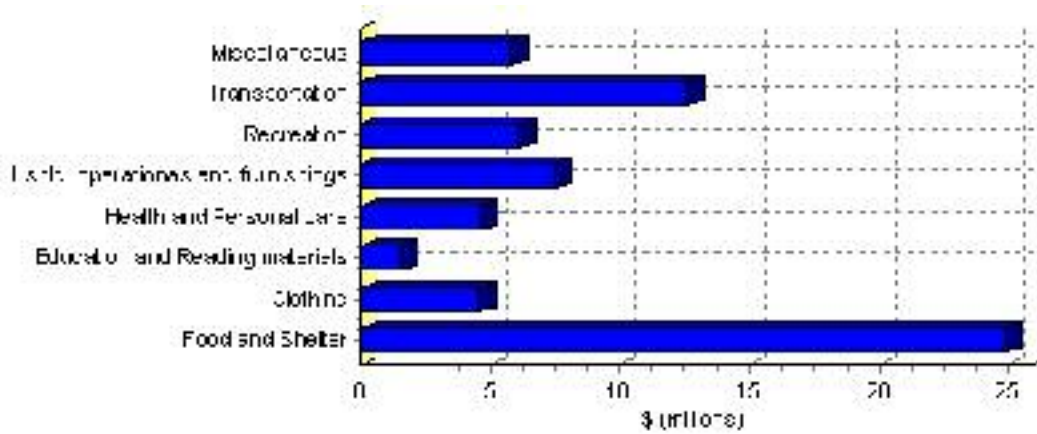
Source: Statistics Canada 1996 & 2001 Census (numbers may not add up due to rounding)

Family Expenditure

Expenditure Category	1992	% of total	1996	% of total
Food and Shelter	\$16,115,920	36.99%	\$24,887,614	36.82%
Clothing	\$3,018,470	6.93%	\$4,539,977	6.72%
Education and Reading materials	\$944,070	2.17%	\$1,545,308	2.29%
Health and Personal care	\$2,711,735	6.22%	\$4,629,063	6.85%
Hshld. operations and furnishings	\$4,799,095	11.01%	\$7,459,896	11.04%
Recreation	\$3,604,455	8.27%	\$6,138,259	9.08%
Transportation	\$8,926,300	20.49%	\$12,606,918	18.65%
Miscellaneous	\$3,440,080	7.90%	\$5,787,837	8.56%
Total Current Consumption	\$43,572,580	100.00%	\$67,594,872	100.00%
Total # of Households	1,435		1,840	
Average Consumption per Household	\$30,364		\$36,736	

Source: Statistics Canada Family Expenditure Survey 1992 & 1996 (numbers may not add up due to rounding).

Strathmore Family Expenditures (1996)

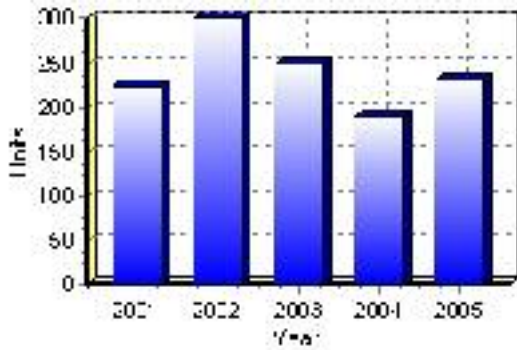


Building Permits

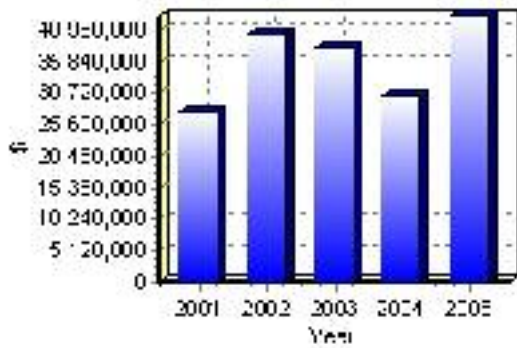
Total Building Permit Values	2001	2002	2003	2004	2005
Building Permits Value, Commercial	\$3,578,000	\$7,413,000	\$10,426,000	\$4,968,000	\$11,640,000
Building Permits Value, Industrial	\$1,674,000	\$189,000	\$452,000	\$596,000	\$199,000
Building Permits Value, Institutional	\$4,194,000	\$367,000	\$488,000	\$1,920,000	\$1,717,000
Building Permits Value, Residential	\$18,174,000	\$32,220,000	\$26,760,000	\$22,875,000	\$29,664,000
Building Permits Value, Total	\$27,620,000	\$40,189,000	\$38,126,000	\$30,359,000	\$43,220,000
Total Housing Starts	223	301	248	189	231

Source: Statistics Canada 2000-2004 Building Permits (numbers may not add up due to rounding)

Total Housing Starts



Value of Building Permits



Dwellings

Occupied Private Dwellings by Type	1996	% of total	2001	% of total
Apartments	185	10.05%	275	10.05%
Detached Duplexes	20	1.09%	20	0.73%
Movable Dwellings	0	0.00%	305	11.15%
Other single attached house	0	0.00%	0	0.00%
Row and semi-detached house	190	10.33%	450	16.45%
Single-detached house	1,445	78.53%	1,690	61.79%
Total number of occupied private dwellings	1,840	100.00%	2,735	100.00%
Private dwellings, owned	1,445	78.53%	2,225	81.35%
Private Dwellings, rented	395	21.47%	510	18.65%

Source: Statistics Canada 1996 & 2001 Census (numbers may not add up due to rounding)

Private Dwellings by Period of Construction	# of Dwellings	% of total
Period of construction, before 1946	75	2.74%
Period of construction, 1946 - 1960	90	3.28%
Period of construction, 1961 - 1970	115	4.20%
Period of construction, 1971 - 1980	675	24.64%
Period of construction, 1981 - 1990	480	17.52%
Period of construction, 1991 - 2001	1,305	47.63%
Total number of private dwellings constructed	2,740	100.00%

Source: Statistics Canada 2001 Census (numbers may not add up due to rounding)

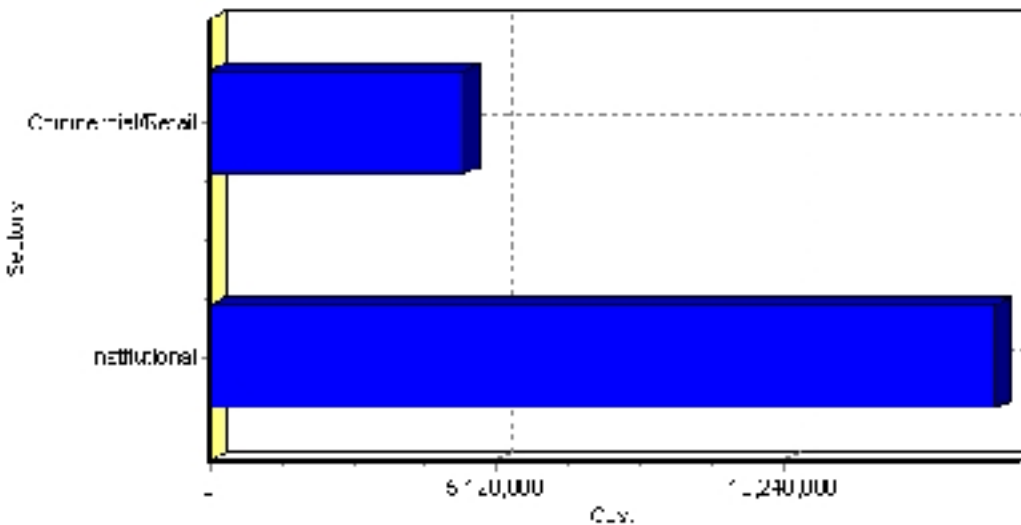
Projects

Summary of Projects in Strathmore as of September 2006

Project Sector	Number of Projects	Project Cost
Institutional	1	\$14,000,000
Commercial/Retail	3	\$4,545,200
Total	4	\$18,545,200

This inventory lists projects in Alberta that have recently been completed, are under construction, or are proposed to start construction. Not all projects are listed due to reasons of confidentiality and/or due to information not being available at the time of printing. Project data is obtained from public information sources, where possible, this data has been verified with the project proponent/developer, users of the Inventory may wish to confirm project data with the proponent/developer. The inventory does not breakdown project expenditures by any given year. The cost of a project is the value of expenditures expected over all phases of project construction, which may span over two or more years. Cost of projects listed in the Inventory are estimated values only. Source: Alberta Economic Development, 2004.

Value of Projects by Sector (as of September 2006)



Project Status	Number of Projects	Project Cost
Completed	1	\$2,500,000
Proposed	2	\$15,400,000
Under Construction	1	\$645,200
Total	4	\$18,545,200

This inventory lists projects in Alberta that have recently been completed, are under construction, or are proposed to start construction. Not all projects are listed due to reasons of confidentiality and/or due to information not being available at the time of printing. Project data is obtained from public information sources, where possible, this data has been verified with the project proponent/developer, users of the Inventory may wish to confirm project data with the proponent/developer. The inventory does not breakdown project expenditures by any given year. The cost of a project is the value of expenditures expected over all phases of project construction, which may span over two or more years. Cost of projects listed in the Inventory are estimated values only. Source: Alberta Economic Development, 2004.

Largest Projects in Strathmore as of September 2006

Company Name	Project Description	Project Location	Project Cost	Construction Schedule	Status
Brenda Stafford Foundation Ltd.	Long - Term Care and Supportive Living Facility	Strathmore	\$14,000,000	-	Proposed
Chinook Credit Union	New Building	Strathmore	\$2,500,000	2005-2006	Completed
Strathmore Lake Estates	Commercial Building	Strathmore	\$1,400,000	-	Proposed
RMU Resources	COMMERCIAL BUILDINGS	Strathmore	\$645,200	2006-2006	Under Construction

Disclaimer: Information in this profile has been provided from a variety of external sources. Although every effort has been made to ensure the accuracy, currency and reliability of the content and data, AlbertaFirst.com Ltd. accepts no responsibility in this regard.

© AlbertaFirst.com Ltd., 2006.