

Mayerthorpe

www.townofmayerthorpe.ab.ca

Welcome

Howdy! and welcome to "Everybody's Community". At a population of 1,570 Mayerthorpe is located on Highway 43 at the junction of Highway 22, 130 km northwest of Edmonton.

The agricultural, forestry, oil and gas sectors of the economy are important factors in our town's prosperity. Tourism is a rapidly growing sector as well, and services for the traveling public are becoming a greater demand each day.

Mayerthorpe's location may be its biggest asset. Highway 43, (the Canamex Trade Corridor) a major route to the NWT and Alaska, will be completely twinned past Mayerthorpe in the summer of 2007. This will ensure a steady stream of passenger, recreational vehicle and commercial traffic for years to come. Mayerthorpe is also the end of The Cowboy Trail (Highway 22), which is the scenic alternative to Highway 2. The Cowboy Trail offers a vast array of aboriginal and western heritage products and adventures.

We are a bustling little town with many community groups, recreation facilities, schools, excellent medical services, senior facilities and programs, RCMP and all the hometown feelings you can handle. We pride ourselves on our friendliness and our desire to help.

If you are searching for that perfect place to relocate your business, or to start a business, Mayerthorpe has that tremendous potential you are seeking. If you are looking for a place to relax or retire we can accommodate you, too.

As the Mayor of Mayerthorpe, I am proud of our development as a community, and I am optimistic about our future. I am confident that we will continue to grow and prosper. I extend an invitation to you to visit our town office on Denny Hay Drive (52nd Street), and if you feel we can be of any assistance, please feel free to contact our Chief Administrative Officer at Tel: 780-786-2416, Fax: 780-786-4590 or email Greg for more complete information. For more information on our community, please visit our website at www.townofmayerthorpe.ab.ca.

Albert Schalm, Mayor



Mayerthorpe's Welcome Sign on the south entrance into town off of Highway 43.

Area Overview

The Town of Mayerthorpe is a town of 1 570 people in northwest Alberta. It is strategically located at the crossroads of Highway 22, The Cowboy Trail and Highway 43, the route to Alaska and is only 75 minutes from Edmonton, 3 hours from Jasper and 30 minutes from Whitecourt.

Mayerthorpe has a full range of modern services, including a 25-bed hospital and 30-bed auxiliary wing, excellent education system with a recently added outreach school, and a wide range of indoor and outdoor recreational facilities. This has given rise to the town's motto, "**Everybody's Community**".

Agriculture has provided a strong economic base for the community. A number of entrepreneurial firms have chosen Mayerthorpe as their base, and several agri-business opportunities are still available. Mayerthorpe is a good base to locate your business, your industry or your family.



Aerial view of the Town of Mayerthorpe from the northwest.



This is one of the few elevators left in Alberta. The Country Elevator Society formed in Mayerthorpe to preserve this elevator which was built in 1929 from destruction. The cats were on site ready to tear it down when word came through that the Society was successful in their efforts to preserve this part of Mayerthorpe's history.

Climate

Temperature Seasonal Averages:

January -16.4 C or 2.5 F

April 2.4 C or 36.6 F

July 15.1 C or 59.2 F

October 4.0 C or 39.2 F

Annual Precipitation

Rain 37 cm or 14.38 inches

Snowfall 141 cm or 55.45 inches

Total 52 cm or 20.51 inches

Frost Free Days:

164 For a current up to date forecast click on [The Weather Network](#)



Community Services

Municipal

Town of Mayerthorpe

Box 420

Mayerthorpe, Alberta T0E 1N0

Tel: 780-786-2416

Fax: 780-786-4590

E-mail: admin@townofmayerthorpe.ab.ca

Mayerthorpe Public Library [Tel: 780-786-2404]

Special Constable [Tel: 780-786-2416]

Gordon Sedgewick

FCSS/Recreation [Tel: 780-786-2416]

Joanne Johnson

Box 420

Mayerthorpe, Alberta T0E 1N0

Provincial

Provincial Court Medical Examiner-Coroner

Federal

Canada Post Royal Canadian Mounted Police

Community Lifestyle

Recreation

Outdoor facilities include ball diamonds, a soccer field, rodeo grounds, 9-hole green grass golf course, driving range and golf clubhouse, an overnight campground, the Paddle River Park [picnic park], several children's playgrounds, recently built skateboard park, a dirt BMX bike course and an outdoor swimming pool. Downhill & cross-country skiing is available 30 minutes away from Mayerthorpe.

Indoor facilities include a curling rink, a skating arena, and an indoor agricultural show building with outdoor roofed stalls and 5 multi-purpose rooms. As well, there are more than 20 different recreation clubs representing a wide variety of pursuits that operate in and around Mayerthorpe, e.g. baseball, slowpitch, t-ball, curling, golfing, riding, etc.

The Seniors Friendship Center offers shuffleboard, fitness classes, trips and tours, cards, etc. Mayerthorpe boasts one senior citizens home [Pleasantview Lodge], 2 senior citizens manors, Meals on Wheels, seniors taxi service one day per week.

A Teen Center is open Monday to Friday from 11:30 a.m. - 1:30 pm and 3:00 p.m. - 9:00 pm at J-4 Junction north of the railway tracks. Teens from 13-17 are welcome to attend.

There is an overnight campground adjacent to the golf course, day-use picnic areas and walking trails in town, a dumping station for R.V.'s, and equestrian centre south of town, and canoeing opportunities on the Pembina and McLeod Rivers.

Community Organizations

A full range of service clubs and organizations operate in Mayerthorpe: AL-anon, Chamber of Commerce, Seniors Friendship Club, 4-H Council, Kinsmen, Kinettes, K-40 clubs, Toy Lending Library, Lions & Lioness, Royal Canadian Legion and Ladies Auxiliary, Royal Canadian Air Cadets, etc.

Religious Services

Four different Christian denominations hold services in Mayerthorpe: Baptist, Catholic, United Churches and Pentecostal Assembly.

Special Annual Events/Attractions

Local attractions include the Mayerthorpe Elevator, Paddle River Dam, Lessard Lake, Rangeton Park, Paddle River Park, and the Mayerthorpe Golf and Country Club.

- Wildrose Rodeo -- May
- High School Rodeo -- May
- Rangeton Festival -- June
- Annual Show & Shine -- June
- Mayerthorpe Agricultural Fair -- August
- Hay Brothers Golf Tournament -- September
- Kinettes Craft Sale -- November
- Christmas Light-Up -- December

Hospitality

Accommodation in town:

- Haven Inn
- Hub Hotel

Local Bed & Breakfasts:

- Touchstone Farms Bales and Breakfast
- Where Paths Cross Bale-Bed and Breakfast
- Bar D6 Country Retreat
- Rustic Ridge Ranch
- Ohlers Acres

Restaurants

- Bentley's Vintage Kitchen
- Burger Baron
- Curiosities Tea House
- Pizzanapoli
- Lariat Restaurant
- Shorty's Kitchen
- Rochfort Bridge Trading Post



Homes and Seniors Lodgings in Mayerthorpe



This is a collage of some of the summer activities available in Mayerthorpe.

Economic Base

The main economic base of the Mayerthorpe region is agriculture, followed by oil & gas and forestry. Resources available locally include oil, natural gas, construction aggregates, and sand/gravel.



Economic Facts

Mayerthorpe is a member of the [Grande Alberta Economic Region](#) and the following tourism focused organizations [The Cowboy Trail](#) and [The Grande Alberta Trail](#). For information on the economic facts of our region click on the [Grande Alberta Economic Region](#) link.





Education

Elmer Elson Elementary accommodates grades K-6.

Mayerthorpe Jr./Sr. High school has grades 7-12.

Mayerthorpe Outreach accommodates grades 7-12.



Elmer Elson Elementary School houses kindergarten to grade 6 students.



Mayerthorpe High School

Emergency Services

Fire Protection

Mayerthorpe is served by a 19-member paid on-call fire department [Tel: 911]. The department has 2 fire engines, 1 water tanker, 1 rescue unit, the Jaws of Life, and various emergency equipment.

Fire Department

BOX 802

MAYERTHORPE AB T0E 1N0

CONTACT: Randy Schroeder (Fire Chief)

PHONE: 780-786-4529 (H)

Police and Municipal Enforcement Services

The town of Mayerthorpe has a part-time special constable who enforces local bylaws and some provincial laws. To contact our special constable please call [Gordon Sedgewick](#).

Mayerthorpe is served by a 13-member **local** detachment of the Royal Canadian Mounted Police [RCMP] [Tel: 780-786-2291]. Mayerthorpe has an Emergency Response Plan in place.

Ambulance Services

Ambulance service staffed by fully-qualified emergency medical technicians and paramedics which provide 24 hour advanced life support services to the town of Mayerthorpe and surrounding area. [Tel: 911].



The Town of Mayerthorpe's Emergency Response Centre. This building houses the fire department and ambulance.



Local RCMP Detachment

Health Care

Mayerthorpe General Hospital is a 25-active bed hospital built in 1988. A 30-bed auxiliary wing was added in 1989. Also, the newly renovated Extendicare facility can accommodate 50 residents. Other medical services in Mayerthorpe include the Family Practice Clinic, a dental clinic, one chiropractor, and one physiotherapist.



Mayerthorpe Healthcare Centre

Key Contacts for Business Development

Municipal

Town of Mayerthorpe
Box 420
Mayerthorpe, Alberta T0E 1N0
Tel: 780-786-2416
Fax: 780-786-4590

Email

Albert Schalm
Mayor

Greg Gayton
Chief Administrative Officer

Connie Hughes
Accounting Officer

Sherry Bohnen
Economic Development Officer

Barry Gylander
Public Works Foreman (Tel: 780-786-2753)

Mayerthorpe & District Chamber of Commerce
Box 1279
Mayerthorpe, Alberta T0E 1N0

Provincial Updated May 2006)

George VanderBurg
Member of the Legislative Assembly (MLA)
Whitecourt-Ste. Anne Constituency

Constituency Office
P.O. Box 3618
4811 Crockett Street
Mayerthorpe, AB T0E 1N0
Phone: (780) 786-1997
Toll Free: 1-800-786-7136
Fax: (780) 786-1995
whitecourt.steanne@assembly.ab.ca

Legislature Office
#203 Legislature Building
10800-97 Avenue
Edmonton, AB T5K 2B6
Phone: (780) 415-4855
Fax: (780) 415-4853

Alberta Economic Development
Cathy Goulet, Regional Director

Chris Lockhart, Client Service Representative

111 Provincial Building
111 54 ST
Edson, Alberta T7E 1T2
Tel: 780-723-8229
Fax: 780-723-8240

Federal (Updated 2006)

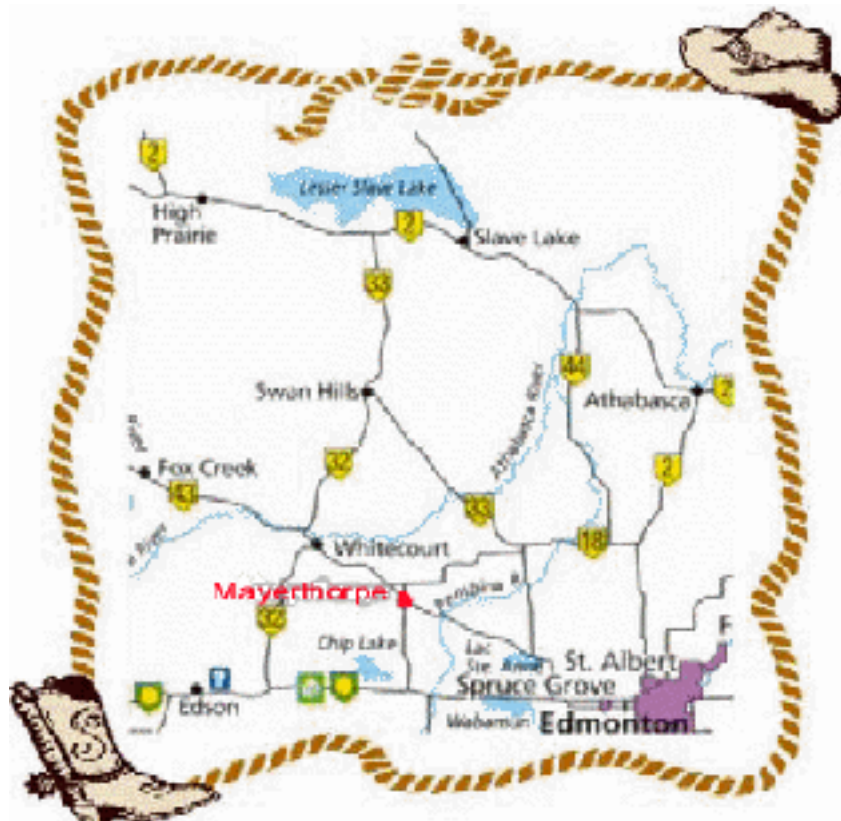
Rob Merrifield
Member of Parliament (MP)
Yellowhead Constituency

Parliamentary Address
House of Commons
Ottawa, Ontario K1A 0A6
Telephone: (613) 992-1653
Fax: (613) 992-3459
E-Mail: Merrifield.R@parl.gc.ca

Constituency Address
119 - 50th Street, PO Box 7887
Edson, Alberta T7E 1V9
Telephone: (780) 723-6068 1-800-268-7117
Fax: (780) 723-5060
TTY:
E-Mail:
5023 - 50 Avenue, P.O. Box 1495
Whitecourt, Alberta T7S 1P3
Telephone: (780) 706-2067
Fax: (780) 706-2085

Location

The Town of Mayerthorpe is located in the County of Lac Ste. Anne #28, in northwest Alberta. It is 129 km [75 minutes] northwest of Edmonton and 226 km northeast of Jasper. It is at the crossroads of Highway #43 [Alaska Highway] and Highway #22. The Town of Mayerthorpe is the northern link on Alberta's 700 km Cowboy Trail.



Post Secondary Education

The Lac Ste. Anne/Whitecourt Further Education Council offers non-credit courses through its member agencies on a wide variety of subjects, and the Pembina Educational Consortium serves the university and credit course needs of residents of Mayerthorpe.

Post-secondary education is available at The University of Alberta, Northern Alberta Institute of Technology [NAIT], and Grant MacEwan Community College, all located less than 1 hour away in Edmonton.

Taxation

Mill Rates [2006]

Residential 18.5940
Commercial 23.0940

	<u>Residential/Farmland</u>	<u>Non-Residential</u>
2006		
Municipal Tax Rate	13.9400	16.4400
Education - Alberta School Foundation Fund Tax Rate	4.5100	6.5100
Seniors Lodge Accommodation Tax Rate	.1440	.1440

Transportation

Air Service

The Town of Mayerthorpe is served by a municipal airport located 3 km west. The airport has a 854 metre runway and all-weather facilities. The airport can handle private and charter flights. No fuel or oil services are available. The nearest commercial and freight services are in Edmonton, 128 km southeast of Mayerthorpe.

Rail Service

Mayerthorpe is served by a Canadian National Railway branch line. Spur trackage is available. Intermodal services are available in Edmonton and Calgary.

Highways

The Town of Mayerthorpe is served by Highway #43 [north to Alaska], which provides access to the Mackenzie Highway, and Highway #22 [The Cowboy Trail](#), which provides access to the [Yellowhead Highway to Jasper or Edmonton](#).

Trucking Firms

Several trucking firms are represented, from freight transport to gravel, oilfield, livestock or lumber hauling.

Bus Services

The Town of Mayerthorpe has a Greyhound Bus Depot. Passenger services are offered six times per day and freight services four times per day.

Couriers and Taxis

A senior's taxi service and two bonded courier firms serve Mayerthorpe and area.

Utilities

Electrical Power

Epcor
Tel:310-4300

Natural Gas

Atco Gas Limited
Tel: 1-888-511-7550

Telephone

Telus
Tel: 1-800-361-3311

Water Supply

The source of water is seven wells. The reservoir capacity, measured in treated substance, is 2,877 cubic metres. The Town's reservoir design capacity is 1,617 cubic metres.

Waste Management

Sewage treatment is provided by lagoons consisting of 4 short and 3 long detention ponds. Garbage is collected weekly from May - October and once every two weeks from Nov. - April. The Town has a spring cleanup the second Monday in May and a fall cleanup the second Monday in September. A hazardous waste roundup takes place once a year in June. Recyclables are picked up every Friday.

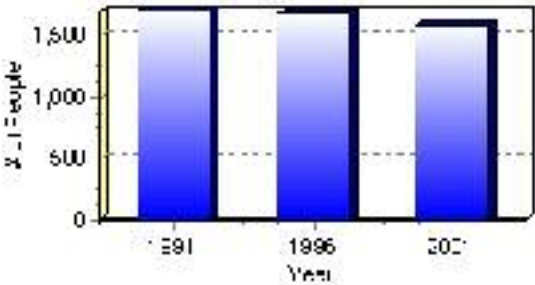
Population

Total Population

Population 2004*	1,570
Population 2003*	1,570
Population 2002*	1,570
Population 2001**	1,570
Population 2000*	1,669
Population 1996**	1,669
Population 1991**	1,692
Population % change 1991-1996	-1.38%
Population % change 1996-2001	-6.31%

* Source: Official Population List, Alberta Municipal Affairs
** Source: Statistics Canada 1991, 1996, & 2001 Census

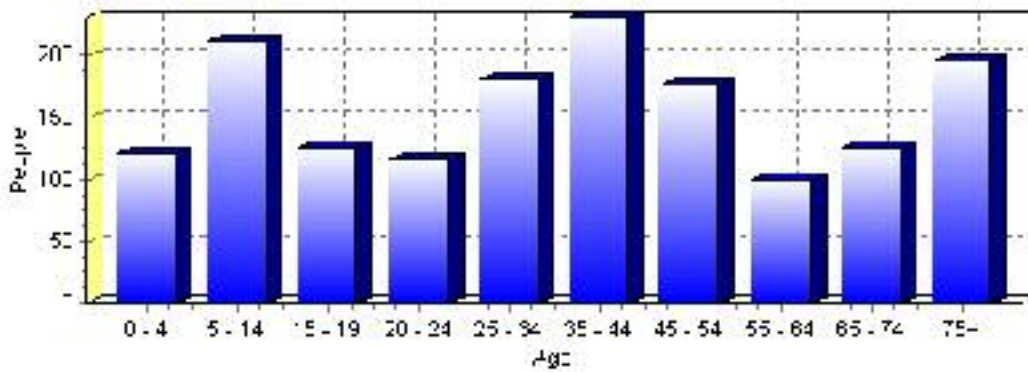
Total Population 1991-2001



Population by Age and Gender	1996 Male	1996 Female	1996 Total	2001 Male	2001 Female	2001 Total
Age 0 - 4	60	55	115	50	70	120
Age 5 - 14	145	140	285	100	110	210
Age 15 - 19	70	60	130	60	65	125
Age 20 - 24	55	60	115	55	60	115
Age 25 - 34	115	115	230	85	95	180
Age 35 - 44	120	105	225	110	120	230
Age 45 - 54	70	60	130	95	80	175
Age 55 - 64	50	70	120	50	50	100
Age 65 - 74	70	65	135	60	65	125
Age 75 and older	70	120	190	75	120	195
Total All Persons	815	855	1,670	740	830	1,570

Source: Statistics Canada 1996 & 2001 Census (numbers may not add up due to rounding)

Mayerthorpe Population by Age Group (2001)

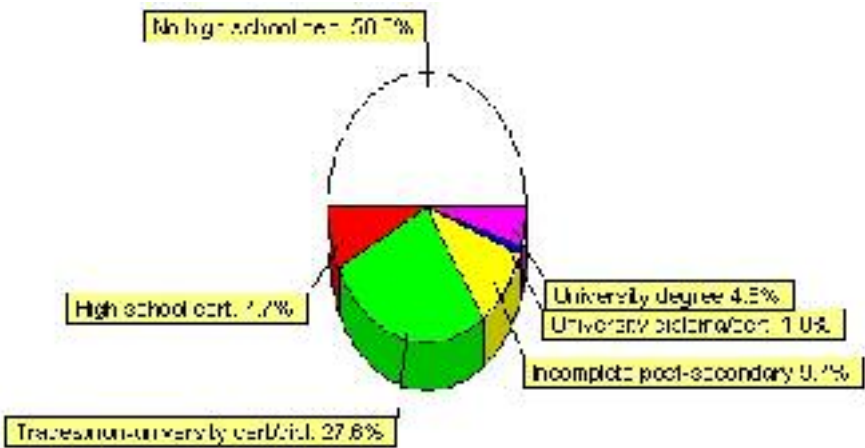


Education Statistics

Highest level of schooling for Population 20yrs and older	2001	%
People without high school certificates	490	50.00%
People with high school certificates	75	7.65%
People with trades or non-university certificate or diploma	270	27.55%
People with post-secondary education (not completed)	95	9.69%
People with university diploma/certificate	10	1.02%
People with university degree	45	4.59%
Total Population 20 years and older	980	100.00%

Source: Statistics Canada 2001 Census (numbers may not add up due to rounding)

Mayerthorpe Highest Level of Schooling 2001



Population with Post Secondary Qualifications	1996	%	2001	%
Agriculture and biological sciences	35	9.46%	25	7.81%
Commerce, management and business administration	40	10.81%	55	17.19%
Educational, recreational and counseling services	55	14.86%	30	9.38%
Engineering and applied science tech. and trades	120	32.43%	100	31.25%
Engineering and applied sciences	0	0.00%	10	3.13%
Fine and applied arts	15	4.05%	20	6.25%
Health professionals, science and technologies	75	20.27%	70	21.88%
Humanities and related fields	20	5.41%	10	3.13%
Mathematics and physical sciences	0	0.00%	0	0.00%
Social sciences and related fields	10	2.70%	0	0.00%
Other and/or no specialization	0	0.00%	10	3.13%
Total people with post secondary qualifications	370	100.00%	320	100.00%
Females with post-secondary qualifications	180	48.65%	165	51.56%
Males with post-secondary qualifications	190	51.35%	155	48.44%

Source: Statistics Canada 1996 & 2001 Census (numbers may not add up due to rounding)

Labour Force

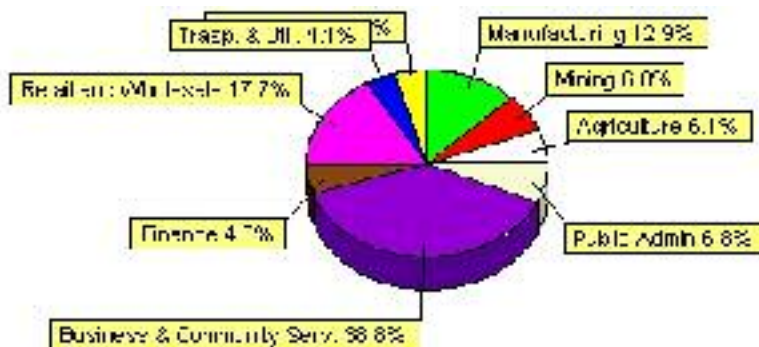
Labour force by activity	1996	2001
In the labour force, both sexes	625	735
Not in the labour force, both sexes	465	365
Total population 15 and over	1,090	1,100
Employed, both sexes	540	695
Unemployed, both sexes	85	40
Participation rate, both sexes	57.00%	67.00%
Unemployment rate, both sexes	13.00%	5.00%

Source: Statistics Canada 1996 & 2001 Census (numbers may not add up due to rounding)

Labour Force by Industry Division	1996	% of total	2001	% of total
Agriculture	30	4.92%	45	6.12%
Mining	25	4.10%	50	6.80%
Manufacturing	55	9.02%	95	12.93%
Construction	40	6.56%	30	4.08%
Transportation. & Utilities	50	8.20%	30	4.08%
Retail and Wholesale	130	21.31%	130	17.69%
Finance	25	4.10%	35	4.76%
Business & Community Services	195	31.97%	285	38.78%
Public Administration	20	3.28%	50	6.80%
Total All Industries	610	100.00%	735	100.00%

Source: Statistics Canada 1996 & 2001 Census (numbers may not add up due to rounding)

Mayerthorpe Labour Force By Industry - 2001



Labour Force by Major Occupational Groups	1996	%	2001	%
Management occupations	45	7.44%	35	4.76%
Business, Finances and administrative occupations	45	7.44%	90	12.24%
Natural and applied sciences and related occupations	10	1.65%	25	3.40%
Health occupations	35	5.79%	50	6.80%
Occupations in social science; education; government and religion	45	7.44%	35	4.76%
Occupations in art; culture; recreation and sport	10	1.65%	10	1.36%

Sales and service occupations	150	24.79%	260	35.37%
Trades; transport; equipment operators and related occupations	150	24.79%	155	21.09%
Occupations unique to primary industry	70	11.57%	70	9.52%
Occupations unique to processing; manufacturing and utilities	45	7.44%	20	2.72%
Occupations not elsewhere classified	20	3.31%	0	0.00%
Total - All Occupations (major groups)	605	100.00%	735	100.00%
Females - All Occupations	240	39.67%	360	48.98%
Males - All Occupations	365	60.33%	375	51.02%

Source: Statistics Canada 1996 & 2001 Census (numbers may not add up due to rounding)

Income

Family Income (Number of Families)	1996	%	2001	%
less than \$19,999	55	15.71%	70	19.44%
\$20,000 - \$39,999	125	35.71%	125	34.72%
\$40,000 - \$59,999	55	15.71%	95	26.39%
\$60,000 and over	115	32.86%	80	22.22%
Total number of families	350	100.00%	370	102.78%
Average family income	\$54,815		\$52,500	
Median family income	\$38,582		\$44,830	

Source: Statistics Canada 1996 & 2001 Census (numbers may not add up due to rounding)

Household Income (Number of Households)	1996	%	2001	%
less than \$19,999	180	31.86%	155	27.93%
\$20,000 - \$39,999	180	31.86%	140	25.23%
\$40,000 - \$59,999	70	12.39%	95	17.12%
\$60,000 and over	40	7.08%	155	27.93%
Total number of households	565	100.00%	555	100.00%
Average household income	\$43,435		\$46,110	
Median household income	\$32,147		\$35,578	

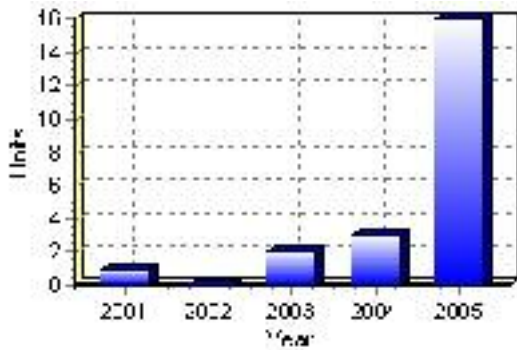
Source: Statistics Canada 1996 & 2001 Census (numbers may not add up due to rounding)

Building Permits

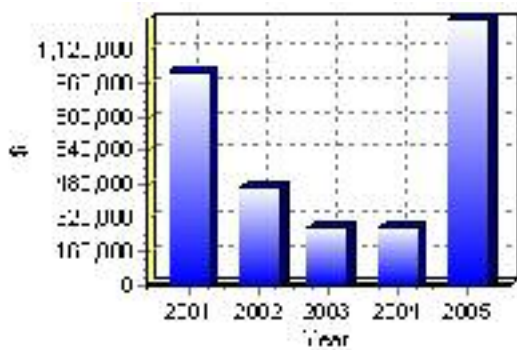
Total Building Permit Values	2001	2002	2003	2004	2005
Building Permits Value, Commercial	\$867,000	\$200,000	\$175,000	\$0	\$200,000
Building Permits Value, Industrial	\$0	\$250,000	\$30,000	\$0	\$0
Building Permits Value, Institutional	\$0	\$0	\$0	\$0	\$0
Building Permits Value, Residential	\$149,000	\$10,000	\$68,000	\$279,000	\$1,060,000
Building Permits Value, Total	\$1,016,000	\$460,000	\$273,000	\$279,000	\$1,260,000
Total Housing Starts	1	0	2	3	16

Source: Statistics Canada 2000-2004 Building Permits (numbers may not add up due to rounding)

Total Housing Starts



Value of Building Permits



Dwellings

Occupied Private Dwellings by Type	1996	% of total	2001	% of total
Apartments	15	2.65%	15	2.70%
Detached Duplexes	0	0.00%	0	0.00%
Movable Dwellings	35	6.19%	130	23.42%
Other single attached house	0	0.00%	0	0.00%
Row and semi-detached house	25	4.42%	25	4.50%
Single-detached house	490	86.73%	385	69.37%
Total number of occupied private dwellings	565	100.00%	555	100.00%
Private dwellings, owned	430	76.11%	420	75.68%
Private Dwellings, rented	130	23.01%	135	24.32%

Source: Statistics Canada 1996 & 2001 Census (numbers may not add up due to rounding)

Private Dwellings by Period of Construction	# of Dwellings	% of total
Period of construction, before 1946	50	9.01%
Period of construction, 1946 - 1960	85	15.32%
Period of construction, 1961 - 1970	95	17.12%
Period of construction, 1971 - 1980	200	36.04%
Period of construction, 1981 - 1990	80	14.41%
Period of construction, 1991 - 2001	45	8.11%
Total number of private dwellings constructed	555	100.00%

Source: Statistics Canada 2001 Census (numbers may not add up due to rounding)

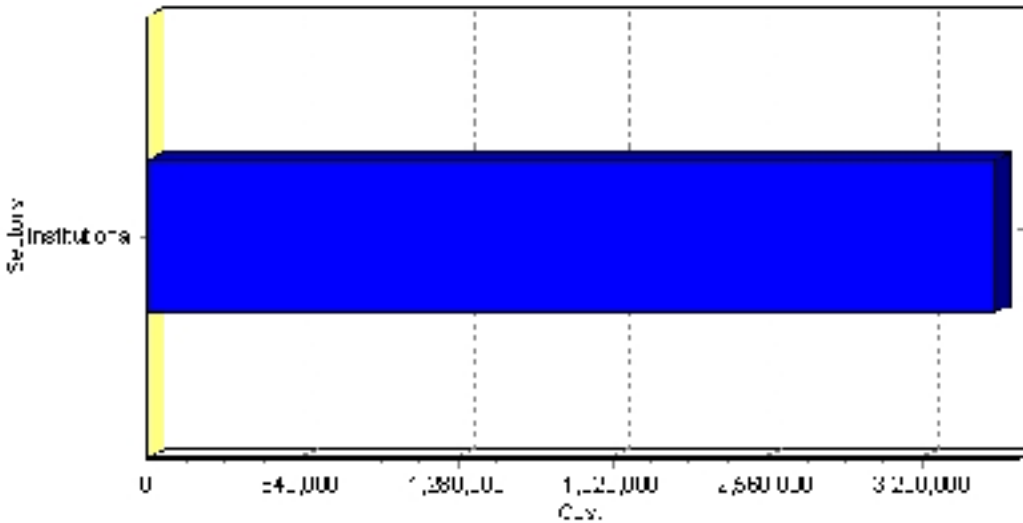
Projects

Summary of Projects in Mayerthorpe as of September 2006

Project Sector	Number of Projects	Project Cost
Institutional	1	\$3,500,000
Total	1	\$3,500,000

This inventory lists projects in Alberta that have recently been completed, are under construction, or are proposed to start construction. Not all projects are listed due to reasons of confidentiality and/or due to information not being available at the time of printing. Project data is obtained from public information sources, where possible, this data has been verified with the project proponent/developer, users of the Inventory may wish to confirm project data with the proponent/developer. The inventory does not breakdown project expenditures by any given year. The cost of a project is the value of expenditures expected over all phases of project construction, which may span over two or more years. Cost of projects listed in the Inventory are estimated values only. Source: Alberta Economic Development, 2004.

Value of Projects by Sector (as of September 2006)



Project Status	Number of Projects	Project Cost
Proposed	1	\$3,500,000
Total	1	\$3,500,000

This inventory lists projects in Alberta that have recently been completed, are under construction, or are proposed to start construction. Not all projects are listed due to reasons of confidentiality and/or due to information not being available at the time of printing. Project data is obtained from public information sources, where possible, this data has been verified with the project proponent/developer, users of the Inventory may wish to confirm project data with the proponent/developer. The inventory does not breakdown project expenditures by any given year. The cost of a project is the value of expenditures expected over all phases of project construction, which may span over two or more years. Cost of projects listed in the Inventory are estimated values only. Source: Alberta Economic Development, 2004.

Largest Projects in Mayerthorpe as of September 2006

Company Name	Project Description	Project Location	Project Cost	Construction Schedule	Status
Lac Ste. Anne Foundation	Pleasant View Lodge Renovations / Expansion	Mayerthorpe	\$3,500,000	-	Proposed

Disclaimer: Information in this profile has been provided from a variety of external sources. Although every effort has been made to ensure the accuracy, currency and reliability of the content and data, AlbertaFirst.com Ltd. accepts no responsibility in this regard.

© AlbertaFirst.com Ltd., 2006.