

# Chipman

## Key Contacts for Business Development

Provincial: Edward Stelmach Member of the Legislative Assembly (MLA) Fort Saskatchewan-Vegreville 607 Legislature Annex 9718  
107 Street Edmonton AB T5K 1E4 Tel: 780-422-5384 Fax: 780-415-0951 Constituency Office: Box 451 4945 - 51 Avenue Vegreville  
T9C 1R6 Tel:780-632-6840 Fax: 780-632-6888 Federal: Leon Earl Benoit Member of Parliament (MP) Vegreville-Wainwright  
Constituency House of Commons Ottawa, Ontario K1A 0A6 Telephone: 613-992-4171 Fax: 613-996-9011 Constituency Address:  
5004 - 49th Street Professional Building P.O. Box 300 Mannville, Alberta T0B 2W0 Tel: 780-763-6130 Toll Free: 1-800-463-1194  
Fax: 780-763-6132

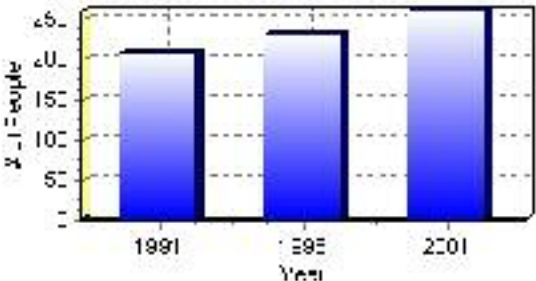
# Population

## Total Population

Population 2004*	260
Population 2003*	260
Population 2002*	260
Population 2001**	250
Population 2000*	230
Population 1996**	230
Population 1991**	208
Population % change 1991-1996	9.57%
Population % change 1996-2001	11.54%

\* Source: Official Population List, Alberta Municipal Affairs  
\*\* Source: Statistics Canada 1991, 1996, & 2001 Census

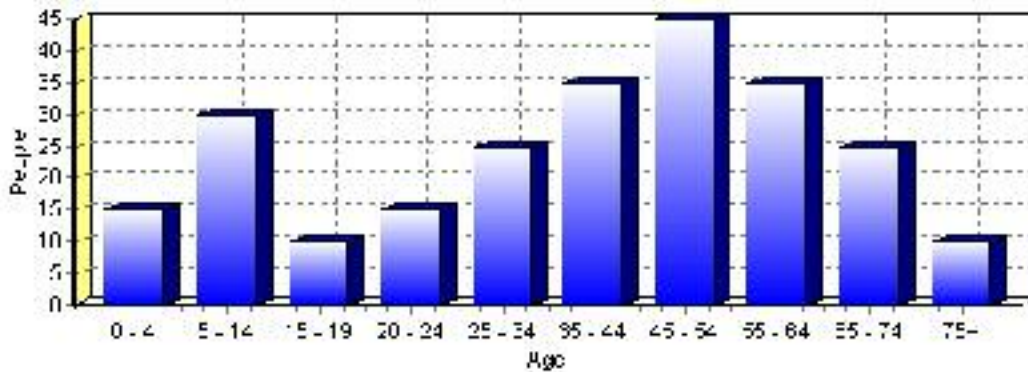
## Total Population 1991-2001



Population by Age and Gender	1996 Male	1996 Female	1996 Total	2001 Male	2001 Female	2001 Total
Age 0 - 4	5	5	10	5	10	15
Age 5 - 14	25	10	35	20	10	30
Age 15 - 19	5	10	15	10	0	10
Age 20 - 24	5	10	15	10	5	15
Age 25 - 34	5	15	20	10	15	25
Age 35 - 44	20	20	40	20	15	35
Age 45 - 54	20	15	35	20	25	45
Age 55 - 64	10	10	20	25	10	35
Age 65 - 74	15	10	25	10	15	25
Age 75 and older	10	5	15	0	10	10
Total All Persons	120	105	225	140	105	245

Source: Statistics Canada 1996 & 2001 Census (numbers may not add up due to rounding)

### Chipman Population by Age Group (2001)

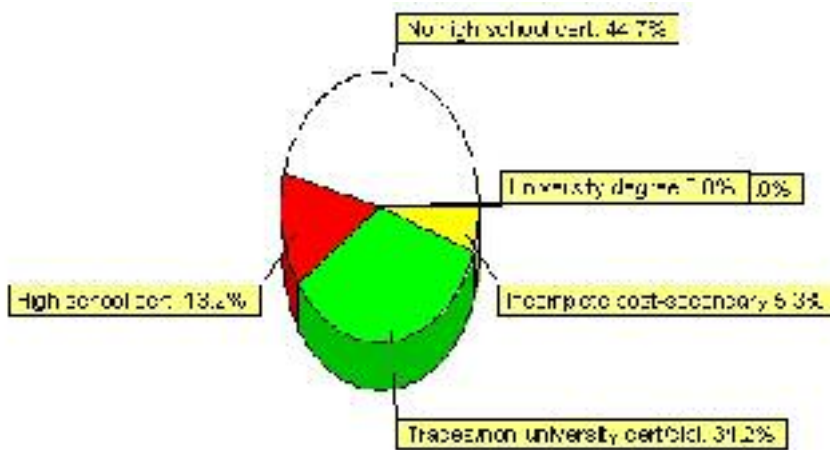


# Education Statistics

Highest level of schooling for Population 20yrs and older	2001	%
People without high school certificates	85	44.74%
People with high school certificates	25	13.16%
People with trades or non-university certificate or diploma	65	34.21%
People with post-secondary education (not completed)	10	5.26%
People with university diploma/certificate	0	0.00%
People with university degree	0	0.00%
Total Population 20 years and older	190	100.00%

Source: Statistics Canada 2001 Census (numbers may not add up due to rounding)

## Chipman Highest Level of Schooling 2001



Population with Post Secondary Qualifications	1996	%	2001	%
Agriculture and biological sciences	0	0.00%	0	0.00%
Commerce, management and business administration	0	0.00%	20	30.77%
Educational, recreational and counseling services	20	28.57%	0	0.00%
Engineering and applied science tech. and trades	40	57.14%	40	61.54%
Engineering and applied sciences	0	0.00%	0	0.00%
Fine and applied arts	10	14.29%	0	0.00%
Health professionals, science and technologies	0	0.00%	0	0.00%
Humanities and related fields	0	0.00%	0	0.00%
Mathematics and physical sciences	0	0.00%	0	0.00%
Social sciences and related fields	0	0.00%	10	15.38%
Other and/or no specialization	0	0.00%	0	0.00%
Total people with post secondary qualifications	70	100.00%	65	100.00%
Females with post-secondary qualifications	25	35.71%	15	23.08%
Males with post-secondary qualifications	45	64.29%	50	76.92%

Source: Statistics Canada 1996 & 2001 Census (numbers may not add up due to rounding)

## Labour Force

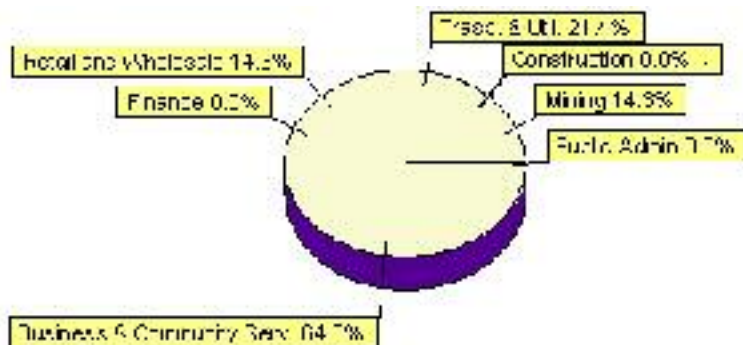
Labour force by activity	1996	2001
In the labour force, both sexes	115	70
Not in the labour force, both sexes	80	120
Total population 15 and over	195	190
Employed, both sexes	90	65
Unemployed, both sexes	25	0
Participation rate, both sexes	59.00%	37.00%
Unemployment rate, both sexes	21.00%	0.00%

Source: Statistics Canada 1996 & 2001 Census (numbers may not add up due to rounding)

Labour Force by Industry Division	1996	% of total	2001	% of total
Agriculture	0	0.00%	0	0.00%
Mining	0	0.00%	10	14.29%
Manufacturing	10	10.53%	0	0.00%
Construction	25	26.32%	0	0.00%
Transportation. & Utilities	0	0.00%	15	21.43%
Retail and Wholesale	20	21.05%	10	14.29%
Finance	0	0.00%	0	0.00%
Business & Community Services	20	21.05%	45	64.29%
Public Administration	10	10.53%	0	0.00%
Total All Industries	95	100.00%	70	100.00%

Source: Statistics Canada 1996 & 2001 Census (numbers may not add up due to rounding)

### Chipman Labour Force By Industry - 2001



Labour Force by Major Occupational Groups	1996	%	2001	%
Management occupations	0	0.00%	0	0.00%
Business, Finances and administrative occupations	20	21.05%	15	21.43%
Natural and applied sciences and related occupations	0	0.00%	0	0.00%
Health occupations	0	0.00%	10	14.29%
Occupations in social science; education; government and religion	0	0.00%	0	0.00%
Occupations in art; culture; recreation and sport	15	15.79%	0	0.00%

Sales and service occupations	15	15.79%	10	14.29%
Trades; transport; equipment operators and related occupations	35	36.84%	35	50.00%
Occupations unique to primary industry	0	0.00%	0	0.00%
Occupations unique to processing; manufacturing and utilities	10	10.53%	0	0.00%
Occupations not elsewhere classified	20	21.05%	0	0.00%
Total - All Occupations (major groups)	95	100.00%	70	100.00%
Females - All Occupations	40	42.11%	25	35.71%
Males - All Occupations	55	57.89%	45	64.29%

Source: Statistics Canada 1996 & 2001 Census (numbers may not add up due to rounding)

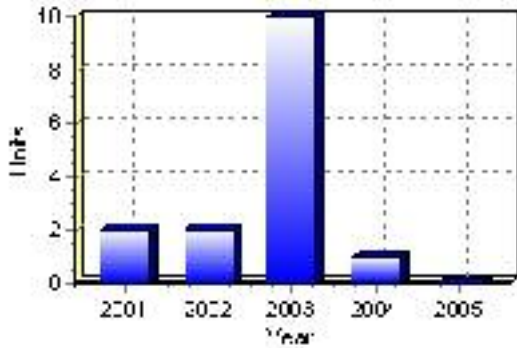
---

# Building Permits

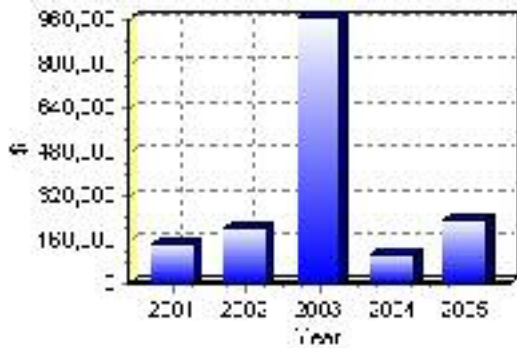
Total Building Permit Values	2001	2002	2003	2004	2005
Building Permits Value, Commercial	\$0	\$80,000	\$0	\$0	\$152,000
Building Permits Value, Industrial	\$0	\$0	\$0	\$0	\$0
Building Permits Value, Institutional	\$0	\$0	\$0	\$0	\$0
Building Permits Value, Residential	\$145,000	\$122,000	\$966,000	\$106,000	\$80,000
Building Permits Value, Total	\$145,000	\$202,000	\$966,000	\$106,000	\$232,000
Total Housing Starts	2	2	10	1	0

Source: Statistics Canada 2000-2004 Building Permits (numbers may not add up due to rounding)

## Total Housing Starts



## Value of Building Permits



## Dwellings

<b>Occupied Private Dwellings by Type</b>	<b>1996</b>	<b>% of total</b>	<b>2001</b>	<b>% of total</b>
Apartments	0	0.00%	0	0.00%
Detached Duplexes	0	0.00%	0	0.00%
Movable Dwellings	15	15.79%	10	9.09%
Other single attached house	0	0.00%	0	0.00%
Row and semi-detached house	0	0.00%	5	4.55%
Single-detached house	80	84.21%	95	86.36%
Total number of occupied private dwellings	95	100.00%	110	100.00%
Private dwellings, owned	70	73.68%	80	72.73%
Private Dwellings, rented	30	31.58%	25	22.73%

Source: Statistics Canada 1996 & 2001 Census (numbers may not add up due to rounding)

<b>Private Dwellings by Period of Construction</b>	<b># of Dwellings</b>	<b>% of total</b>
Period of construction, before 1946	20	19.05%
Period of construction, 1946 - 1960	10	9.52%
Period of construction, 1961 - 1970	10	9.52%
Period of construction, 1971 - 1980	50	47.62%
Period of construction, 1981 - 1990	15	14.29%
Period of construction, 1991 - 2001	0	0.00%
Total number of private dwellings constructed	105	100.00%

Source: Statistics Canada 2001 Census (numbers may not add up due to rounding)

Disclaimer: Information in this profile has been provided from a variety of external sources. Although every effort has been made to ensure the accuracy, currency and reliability of the content and data, AlbertaFirst.com Ltd. accepts no responsibility in this regard.

© AlbertaFirst.com Ltd., 2006.