

Whitecourt

www.whitecourt.ca

Welcome



GREETINGS FROM THE MAYOR

Welcome to the Town of Whitecourt, the Snowmobile Capital of Alberta! Whitecourt is the ideal place to call home, with an abundance of natural resources and a thriving economy.

Whitecourt is a dynamic, young and growing community that strives to meet the needs of all residents. The majority of the Town's population is between the ages of 25 and 44 years old, many with young families.

Whitecourt has a wealth natural resources and attractions for leisure, recreational, cultural and business opportunities. Whether you are moving or visiting the area, I am sure that you will enjoy all that Whitecourt has to offer!

Thank you for you interest in our community. We look forward to welcoming you!

Sincerely,

Trevor Thain
Mayor

The Town of Whitecourt has created a [Welcome Package](#) for new residents. From information on Town Council to information on garbage collection, the Welcome Package is an excellent resource for current and future Whitecourt residents.

Area Overview

Whitecourt, the "Snowmobile Capital of Alberta," is located in the rolling hills of mixed forests, with strong ties to the surrounding area's natural resources. Whitecourt is a beautiful, family-oriented community with numerous recreational, cultural and economic opportunities. The diversification of the economy to a variety of industries (forestry, oil and gas, and tourism) has allowed the community to prosper, and will assure the continued economic health of the Town and the region. The short and long term growth prospects of Whitecourt are excellent!

For more information, click [here](#) to view the Town of Whitecourt video, or visit the Town website at www.whitecourt.ca.



Aerial Photograph of Whitecourt

Climate

Whitecourt has four seasons with varying temperatures throughout the year. The average seasonal temperatures for the following months are:

January -16.6C (2.1F)

April -2.7C(36.9F)

July 15.1C (59.2F)

October 3.4C (38.1F)

Visit [Whitecourt's Weather Forecast](#) for short and long term predictions.



Recreational Activities in the Winter

Community Services

DEPARTMENT MISSION STATEMENT

“To assist the community in identifying, promoting, and providing programs, services, facilities, and open space that will support the creation of a healthy, dynamic community”.

COMMUNITY SERVICES DEPARTMENT

The Community Services Department operates all recreation facilities, including the Whitecourt Twin Arenas, RCMP Century Swimming Pool, Graham Acres Recreation Area, Rotary Park, neighbourhood parks, trails, open spaces and outdoor skating rinks.

The Community Services Department also offers a diverse range of recreation and cultural programs. All programs are advertised in a [Community Wellness in Action Brochure](#) that is published and distributed in the [Whitecourt Star](#) every second month. Fitness classes, health and well-being programs, children and adult crafts, and various sport classes are just a few examples of activities offered.

The Community Services Department also produces [Whitecourt's Route to Recreation](#), a monthly newsletter outlining local

recreation events, opportunities and activities.

Family Day and Canada Day events are two annual events organized by the Community Services Department. To view the Whitecourt Community Events Calendar, click [here](#).

The Department also assists local groups to meet their leisure needs; provides funding and grant information; and works with the Community Services Advisory Board to provide recommendations to Town Council on Whitecourt's recreational needs.

Frequently Asked Questions

FAMILY & COMMUNITY SUPPORT SERVICES (FCSS)

Family and Community Support Services (FCSS) provide support services and programs for individuals, families and organizations that are designed to provide preventative social assistance. The goals of FCSS are to: prevent family and social breakdown, support voluntarism, and meet the social needs of the community.



Family Day and Canada Day Fun

Community Lifestyle

Whitecourt offers exceptional opportunities for pursuing recreational activities. A well-established link exists between the resource-extraction industries and tourism in the Whitecourt area. Oil exploration seismic lines, followed by logging roads, have improved access into the wilderness.

As the years have passed, roads and tourism support facilities have improved and continue to attract a wide range of outdoor enthusiasts. The 11,000 square kilometers of the forests surrounding Whitecourt are accessible by foot, horse, canoe, all-terrain vehicle, snowshoe, or skis.

Whitecourt is known for its beautiful location by the Athabasca and McLeod Rivers. Residents and tourists take full advantage of the rivers as they canoe, kayak, boat, fish, tube (down the McLeod River), or play in the sun and have fun.

TRAIL SYSTEM

The Town of Whitecourt has 30 kilometers (6 kilometers paved) of trails that connect the valley to the hilltop. The trails are located throughout residential, downtown and forested areas. The trails are used by people who walk, bike, run or jog.

The Town and surrounding area has hundreds of kilometers of designated trails for off-highway vehicle use. The Town of Whitecourt has a bylaw that regulates the use of off-highway vehicles (for example, snowmobiles and quads) within Town boundaries and only allows for seasonal use – from December 1 to March 31. For further information on the Bylaw or a map of the Off-Highway Vehicle Designated Trail System, click [here](#).

RECREATION FACILITIES

Recreation facilities include: RCMP Century Swimming Pool, Whitecourt Twin Arenas, [Whitecourt Golf and Country Club](#), numerous outdoor skating rinks (seasonal), a 4-sheet curling rink, 4 tennis courts, fitness clubs, 12 baseball diamonds and cross-country ski trails. Town Council recently approved modernization and enhancements projects for the Whitecourt Twin Arenas and RCMP Century Swimming Pool; and approved the construction of a fieldhouse complex .

For detailed descriptions of Whitecourt's Recreational Facilities, click [here](#).

OUTDOOR ATTRACTIONS

The [Eagle River Staging Area](#), north of Whitecourt, is the take-off point for over 80-kilometers of groomed local snowmobile trails, and the start of the 300-kilometer [Golden Triangle Trail](#). This mapped trail system, supplemented by hundreds of kilometers of ungroomed cut, attracts hundreds of winter visitors to the acclaimed "Snowmobile Capital of Alberta." Summer use of the Eagle River Group Campground is increasing with interest in trail riding and planned social gatherings.

The [Whitecourt Trailblazers Snowmobile Club](#) grooms and maintains all local off-highway vehicle designated trails in Whitecourt for both winter and summer enjoyment. Recently, the Trailblazers won the [Alberta Snowmobile Association](#) 2004 Excellence Award for Outstanding Snowmobile Club, as well as the 2004 Excellence Award for Outstanding Snowmobiler.

Completing the link between the forest industry and tourism is the Eric S. Huestis Demonstration Forest. Located on Highway 32, north of Whitecourt, this forest area demonstrates how a forest can sustain recreation activities, wildlife habitats, and resource harvesting over a long period of time. Twenty-six interpretive sites along a 7 kilometer trail provide information on the various stages of forest life. The impacts of forest management practices can be viewed first hand, and explained by the interpretive staff at the site.

[Carson Pegasus Provincial Park](#) is a popular full service provincial recreation area located just outside Whitecourt. The park offers full camping hookups, clear lakes, and excellent fishing that attracts local residents and tourists alike. Fishing for rainbow trout is a year round pursuit on the park's McLeod Lake. Trails used by hikers in the summer are groomed for skiers throughout the winter.

A variety of small campgrounds, such as Lions Campground, Sagitawah RV Park, Eagle River Wilderness Adventures, and Campside Operations, attract hikers, fishermen and hunters travelling to various parts of the forest for recreation. These campgrounds provide basic amenities and are often used as base camps for forays into the nearby wilderness.

CULTURE AND SPECIAL EVENTS

The development of community facilities and programs has kept pace with the growth of Whitecourt from a small village to a town. As in many Alberta towns, the activity of community volunteers and organizations has resulted in a wide variety of cultural and recreational opportunities. The Pumpjack Players, an active theatre group, perform a series of dinner theatre productions in the Community Center. This group is complimented by a variety of performing arts groups in music and dance. In addition, the Arts Council, created by local artisans, has rotating displays presented at the House Mountain Gallery.

ACCOMMODATION AND MEETING FACILITIES

The tourism industry, backed by 13 hotel/motels with 737 rooms, has benefited from industrial expansion and continued traffic flow on Highway #43. Tourism service providers have enhanced staff training by participating in the Alberta Best Program, which develops workers' skills in the industry in order to improve customer service. Staff training, redevelopment and general

enhancement of facilities is improving the attractiveness of Whitecourt to travelers and tourists.

Click [here](#) for a complete list of accommodations in Whitecourt.

The community has the ability to host major events; honed from past experiences hosting the Annual River Boat Races, the 2003 World Championship Jet River Marathon, the 2005 Canadian Native Fastball Championship, snowmobile events, and other regional competitions. Visit the Town website to view a complete list of [Meeting Facilities and Halls](#).

COMMUNITY ORGANIZATIONS

The Town's Community Service Department and community groups cover almost every possible recreational program or facility need. There are a variety of community groups and organizations in Whitecourt. Please visit the [Recreation Clubs and Activities List](#) for details.

LOCAL BUSINESS COMMUNITY

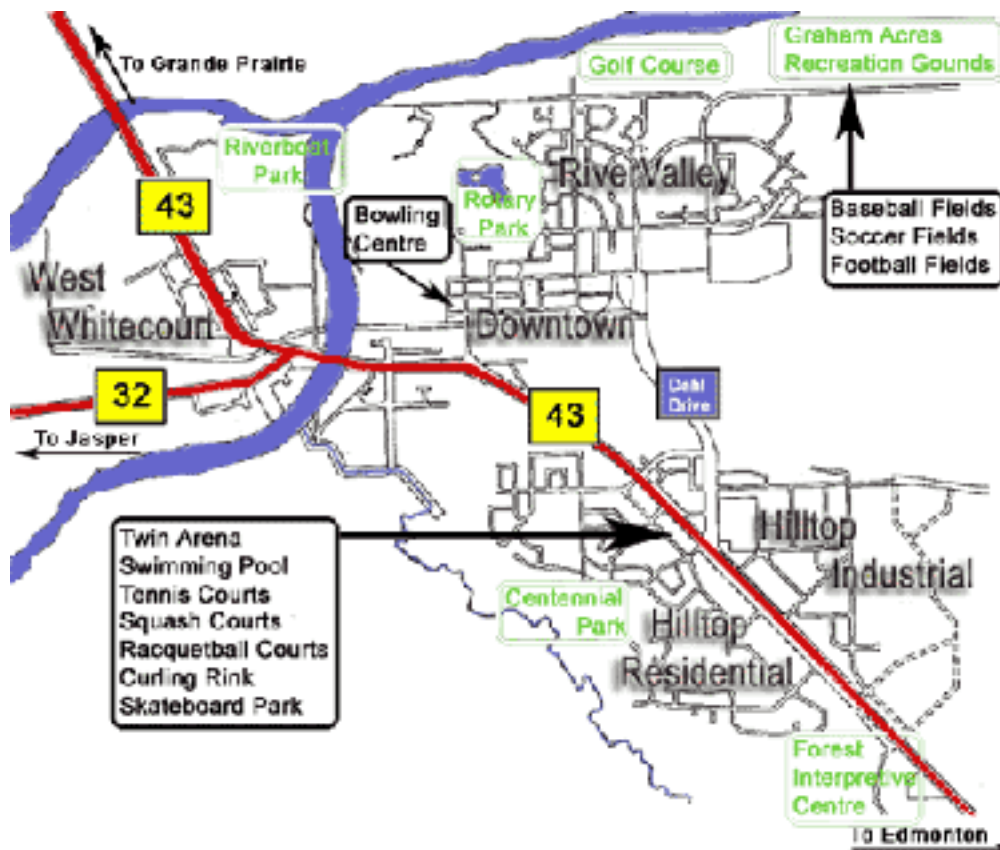
The business community actively supports community endeavors.

The Chamber of Commerce is a volunteer association that brings the business community together into one single influential and respected voice. The [Whitecourt Chamber of Commerce](#) has won the provincial "Chamber of the Year" award three times, manages the tourist information centre and various tour programs, and manages a variety of community development programs. On an annual basis, the Chamber hosts a Trade Fair with attendance in excess of 2,000 people over three days.

The [Rotary Club of Whitecourt](#) meets at noon every Thursday at The Ritz Cafe and Motor Inn. The men and women of Rotary are business and professional persons who volunteer their time and resources to help others in Whitecourt and throughout the world.

RELIGIOUS SERVICES

There are ten religious facilities available for people to attend in Whitecourt. For a complete list, click [here](#).



Recreational Facilities

Economic Base

The main contributing industries to Whitecourt's thriving economy are forestry, oil and gas, and tourism. Other natural resources available locally are: clay, sand, gravel, timber, sulphur, fresh water, and coal.

FORESTRY INDUSTRY

Three major forest companies contribute to the economic base of the community: [Millar Western Forest Products](#), [Alberta Newsprint Company](#), and Blue Ridge Lumber.

The companies operate modern, state-of-the art production facilities that complement up-to-date Woodlands Management Programs. The companies recognize that the health of the forest is of primary importance for long-term business goals, and therefore manage the resources with practices that are among the best in Canada. The mills are as efficient as possible and exceed established environmental standards.

Millar Western Forest Products

Millar Western expanded into the pulp industry with the construction of a \$200 million Bleached Chemi-Thermo-Mechanical Pulp (BCTMP) Mill in Whitecourt in 1988. This BCTMP Mill was the first operation in North America and the second in the world to achieve ISO 14001 Environmental Management Certification.

Millar Western, in partnership with Marmac Engineering, constructed a 21-megawatt electrical generating plant. The remaining residual wood by-products from its mill are used to generate power to the local power station. This ensures that all timber resources are utilized. The power plant is located across the Athabasca River from Whitecourt, and is operated by [Whitecourt Power](#) which delivers the electricity to [FortisAlberta](#). The combustion process utilizes very intense heat, resulting in emission levels well below those set by Alberta Environment.

Millar Western's sawmill began production in June 2001. The mill is located at the confluence of the Athabasca and McLeod Rivers, next to the BCTMP mill. This \$40 million mill is a single-line sawmill that annually produces in excess of 200 million foot board measure of kiln-dried lumber, which is enough lumber to build 11,000 average-sized single-family dwellings.

Alberta Newsprint Company

Shortly after the completion of the BCTMP Mill, Alberta's first newsprint mill was built north of town. This \$400 million plant began production in August 1990, with the capacity of producing 726 tonnes per day, and 260,000 metric tonnes per year.

Blue Ridge Lumber

Blue Ridge Lumber built a Medium Density Fibreboard (MDF) Mill at a cost of \$56 million in 1985, to complement its lumber mill that began operations in 1975. The MDF mill produces a high quality manufactured board for furniture and other products. MDF product has gained an international reputation as a high quality product that is marketed throughout North America. In 1994, the MDF mill underwent a \$40 million expansion.

OIL AND GAS INDUSTRY

Ongoing exploration and field operations in the surrounding area drive growth in Whitecourt. Whitecourt acts as a service centre to the oil and gas industries. Numerous oil and gas companies, service and supply establishments, and oilfield consultants have offices located in the Whitecourt area.

Search the [Whitecourt Business Directory](#) for information on service and supply companies in the oil and gas industry.

TOURISM INDUSTRY

Tourism is continuing to develop – with interest and awareness growing for “the Snowmobile Capital of Alberta” from a number of tourism market segments, particularly the winter/outdoor recreation tourist market.

For more information on facilities, accommodations and attractions in Whitecourt, contact the Visitor Information Centre at (780) 778-5363, or scroll down to the "Community Lifestyle" section of this profile.



Aerial photograph of Whitecourt & the Athabasca River

Economic Facts

The population continues to grow. The population for Whitecourt in 2004 was 8,747 (based on [Statistics Canada](#)), a 5% population increase from 2001.

The median age for Whitecourt is 29.3 years old.

The primary trading area of Whitecourt (a 10 kilometer radius) in 2003 was 9,847 people. The approximate secondary trading area surrounding Whitecourt includes Mayerthorpe, Fox Creek, Blue Ridge, Fort Assiniboine, Edson, Swan Hills, and Barrhead. It accounts for an approximate area of 21,000 square kilometers and services, according to 2003 figures, 41,063 people.

WHITECOURT'S CONTINUED GROWTH

Whitecourt offers a positive business environment - there is no Provincial Sales Tax, low municipal tax (amongst the lowest in the province), low cost utilities, modern infrastructure and an abundance of natural resources. This young and vibrant community is continually growing with the majority of the population between the ages of 25 and 44 years old and an average family income of over \$75,000.

Commercial, industrial and residential development is thriving. The Whitecourt Power Centre is continuing to expand with a variety of commercial and retail businesses. The biggest retail development in the centre is Wal-Mart, which opened in November 2004. Approximately four acres of highway commercial space is also being developed on the east end of Whitecourt. The highway commercial site already has a pending hotel development anticipated to include a restaurant, lounge and waterslide feature.

* The Alberta Provincial Government recently approved development of a casino establishment. The plans are currently being developed and the casino is expected to be operational by 2007.

*Whitecourt Town Council approved extensive renovations to the existing swimming pool and arenas, and to proceed with the construction of a fieldhouse complex. Construction and development of the fieldhouse complex is estimated at \$7.3 million. Improvements and renovations to the pool are estimated at \$2.6 million. Improvements and renovations to the Twin Arenas are estimated at \$1.5 million.

* [The Hilltop East Industrial Park](#) is continuing to develop and is proving to be very successful - garnering high interest and numerous lot sales.

Some of the new businesses that have taken advantage of the continual growth in Whitecourt are: [Ramada Limited](#)(2000), [Western Budget Motel](#) (2001), [Tim Horton's](#) (2001), [Canadian Tire](#) (2002), [Canadian Tire](#) (2002), [Canadian Tire](#) (2002), [Canadian Tire](#)

(2002), Canadian Tire (2002), Canadian Tire (2002), Canadian Tire (2002), Canadian Tire (2002), Canadian Tire (2002), Canadian Tire (2002), Joey's Only Seafood Restaurant (2002), Mark's Work Warehouse(2003), Trican Oilwell Service Ltd., Infratech Corporation, Flint Energy Services Ltd., M&M Meatshop (2004) and Walmart (2004).

For more information on businesses in Whitecourt, search the [Whitecourt Business Directory](#). Visit the official Town website for more information on [Economic Development](#) in Whitecourt.

ECONOMIC DEVELOPMENT ORGANIZATIONS

- [Grande Alberta Economic Region](#)
- [Whitecourt Chamber of Commerce](#)
- [Yellowhead East Business Development Corp.](#)

FINANCIAL INSTITUTIONS

- [Alberta Treasury Branch](#)
- [CIBC](#)
- [Common Wealth Credit Union](#)
- [Royal Bank of Canada](#)
- [Scotia Bank](#)

Education

PUBLIC SCHOOLS Public schools are operated by [Northern Gateway Public Schools](#).

- **Pat Hardy Elementary School** is for students in Kindergarten to Grade 5 and offers programs for exchange and early childhood special needs students.
- **Central School** is for students from Kindergarten to Grade 5, and offers programs for exchange and early childhood special needs students.
- **Percy Baxter School** is for students in Grade 6, 7, & 8 and offers programs for exchange and early childhood special needs students.
- **Hilltop High School** is for students in Grades 9 through 12, and offers an exchange student program.
- **Hilltop Storefront School** is an outreach school that provides an alternative education for students from Grade 10 to 12.

SEPARATE SCHOOLS

Separate schools in Whitecourt are operated by the [Living Waters Catholic Regional Division #42](#).

- **St. Mary School** is for students in Kindergarten through to Grade 3. It offers French Immersion classes and programs for early childhood special needs and exchange students.
- **St. Joseph School** is for students in Grade 4 through Grade 12, and offers exchange and early childhood special needs student programs.

PRIVATE SCHOOLS

- **The Whitecourt & District Playschool** is for children between the ages of 3 and 4 years old.
- **St. James Lutheran School** is a private school for preschool, Kindergarten and Grades 1 and 2. It offers a nurturing Christ-centered environment while providing the students with a quality education.
- **Pembina Educational Consortium** is committed to meeting the needs of the community by providing educational opportunities for adults. It offers a number of public and student services including university, college, distance education and educational information courses, as well as computer lab and classroom space rental.



Percy Baxter School (Grades 6, 7 and 8)

Emergency Services

All Emergency Services in Whitecourt are accessible by calling 911.

FIRE PROTECTION

The [Whitecourt Fire Department](#) consists of 35 volunteer members with a full time Chief and Deputy Chief. The Department provides fire protection and vehicle rescue for the Town of Whitecourt and surrounding areas in Woodland County. The Fire Department can be reached at (780) 778-2311. For emergencies dial 911.

POLICE SERVICES

The Royal Canadian Mounted Police (RCMP) detachment in Whitecourt is served by 17 regular members: 14 on detachment, 3 on traffic services, 5 support staff and various guards, matrons and auxiliary constables. The RCMP can be contacted for complaints at (780) 778-5454, administration and information at (780) 778-2238. For emergencies dial 911. Visit the RCMP website at www.rcmp-grc.gc.ca.

AMBULANCE SERVICES

The Whitecourt Ambulance Services are provided on contract with [Associated Ambulance Services](#). Contact administration at (780) 778-4257. For emergencies dial 911.



Whitecourt Fire Department and RCMP

Health Care

Whitecourt is part of the [Aspen Regional Health Authority](#). The Hospital in Whitecourt has: 24 acute care beds, 10 Doctors, 2 Surgeons, and various visiting specialists.

Other medical services include: a Medical Clinic, an Optometrist, 2 Chiropractors, 3 Dental Clinics, 2 Denture Clinics, and a Senior Citizens Lodge.

Spruceview Seniors Lodge will undergo a renovation and expansion project to include a long-term care facility. The project is currently in the planning and development phase. For more information on senior services available in Whitecourt, click [here](#).

For a list of the health services that are provided to the community of Whitecourt visit [Health Care](#).

Key Contacts for Business Development

MUNICIPAL

Town of Whitecourt
PO Box 509
Whitecourt AB T7S 1N6
Tel: (780) 778-2273
Fax: (780) 778-4166

[Trevor Thain](#)
Mayor

[Peter Smyl](#)
Chief Administrative Officer

[Tara Blanchflower](#)

Communication/Project Coordinator

PROVINCIAL

George VanderBurg

Member of the Legislative Assembly (MLA)

Whitecourt-Ste. Anne Constituency

Constituency Office

P.O. Box 3618

4811 Crockett Street

Mayerthorpe, AB

T0E 1N0

Phone: (780) 786-1997

Toll Free: 1-800-786-7136

Fax: (780) 786-1995

Legislature Office

#203 Legislature Building

10800-97 Avenue

Edmonton, AB

T5K 2B6

Phone: (780) 415-4855

Fax: (780) 415-4853

Grande Alberta Economic Region

Cathy Goulet, Manager

Chris Lockhart, Administration

111 Provincial Building

111 - 54 Street

Edson AB T7E 1T2

Tel: (780) 723-8229

Fax: (780) 723-8240

Yellowhead East Business Development Corporation

5028 50th Avenue

Box 249

Sangudo AB T0E 2A0

Tel: (780) 785-2900

Toll Free: 1-800-556-0328

Fax: (780) 785-3337

yebdc@yebdc.ab.ca

FEDERAL

Rob Merrifield

Member of Parliament (MP)

Yellowhead Constituency

Parliamentary Address

House of Commons

Ottawa, Ontario

K1A 0A6

Telephone: (613) 992-1653

Fax: (613) 992-3459

Constituency Address

119 - 50th Street, PO Box 7887

Edson, Alberta

T7E 1V9

Telephone: (780) 723-6068 1-800-268-7117

Fax: (780) 723-5060

Location

Whitecourt is situated along Highway 43 and Highway 32. It is a short two hour drive, 177 kilometers (110 miles), northwest of Edmonton and 267 kilometers (166 miles) northeast of Jasper. Whitecourt is accessible by vehicle, rail and air transportation.

Given Whitecourt's location along Highway 43, which links Edmonton, Grande Prairie and parts of British Columbia, there are almost 7,000 vehicles travelling through Town on average daily.



Whitecourt's Location

Post Secondary Education

The [Pembina Educational Consortium](#) offers post secondary education in Whitecourt. The University of Alberta, Northern Alberta Institute of Technology (NAIT), and Grant MacEwan Community College are post secondary institutions located in Edmonton, 177 kilometers southeast of Whitecourt. For more information visit [Alberta Learning](#).

Taxation

	<u>Residential/Farmland</u>	<u>Non-Residential</u>
2006		
Municipal Tax Rate	5.6723	9.8901
Education -Alberta School Foundation Fund Tax Rate	3.7463	5.6816
Seniors Lodge Accommodation Tax Rate	0.1262	0.1262

MILL RATES 2006 (including Municipal, Education and Seniors Accommodation Rates)

Residential - 9.5448

Residential in Commerical - 13.7626

Machine & Equipment - 10.0163

Commercial/Industrial - 15.6979

For more information on assessment and taxes in Whitecourt, please contact the Tax Clerk at (780)778-2273 or click [here](#).

Transportation

AIR SERVICE

The [Whitecourt Airport](#), owned and operated by [Woodlands County](#), is located 5 kilometers west of Whitecourt. The airport has all weather facilities (paved, lighted, NDB or Non-Directional Beacon, and VOR or Variable Omni Receiver) and a 1,770 meter (6,000 feet) long runway. The airport code for Whitecourt Airport is YZU.

Charter carriers include three helicopter firms: [Highland Helicopters](#), [Airborne Energy Solutions](#), and [Taiga Helicopters](#).

The closest commercial and air-freight services are at the [Edmonton International Airport](#), located 177 kilometers from Whitecourt.

RAIL SERVICE

A [Canadian National Railway](#) (CN) branch line from Edmonton serves Whitecourt, and travels west to Grizzly and Kabob (south of Fox Creek). Industrial spurs and yards are available. Intermodal services are provided at Edmonton and Calgary.

HIGHWAYS

Whitecourt is situated along Highway 43 and Highway 32. Highway 43 is currently being upgraded to accommodate 4 lanes of traffic.

When traveling to Whitecourt from the west, take Highway 16 which connects with Highway 32 east of Edson. When travelling from Edmonton, follow Highway 16 west and then take the exit for Highway 43 north.

Highway 43, also known as the [Canamex Corridor](#), connects from Edmonton (Highway 16, or Yellowhead Trail), and proceeds north of Whitecourt connecting to Grande Prairie, and British Columbia. There are almost 7,000 vehicles travelling through Whitecourt along Highway 43 on average daily.

The Canamex Corridor is a north–south trade corridor that facilitates the movement of people, information, goods and services across the national and international borders. It links Alaska to Mexico and travels through the states of Nevada, Utah, Idaho and Montana and the provinces of Alberta, British Columbia and Yukon Territory.

Click [here](#) for a detailed map of Whitecourt.

TRUCKING FIRMS

Over 30 trucking firms are located in Whitecourt. There are also terminal facilities available. For a list of trucking businesses, contact

the [Town](#) to request a Community Directory, or call (780) 778-2273.

BUS SERVICES

[Greyhound Canada](#) provides regularly scheduled intercommunity service. Charters are also available.

COURIERS AND TAXIS

[Canada Post](#), [Purolator](#), and [DHL](#), provide courier service to Whitecourt.

There are currently three taxi services operating in and around the Whitecourt area.

To search transportation businesses in Whitecourt, visit Whitecourt's [Business Directory](#) on our website.



Summer Activities in Whitecourt

Utilities

UTILITY PROVIDERS AND COMMUNICATION SERVICES

Power:

FortisAlberta

Power Outages/Customer Service: 310-9473

Natural Gas:

Direct Energy

Customer & Billing Inquires 1-866-374-6299

Gas Emergency 24 - Hours 1-800-511-3447

Water:

Town of Whitecourt

(780) 778-2273

Waste:

Town of Whitecourt

(780) 778-2273

Northwest Sanitation

(780) 778-4888

Telephone:

Telus

(780) 310-2255

Cable:

Northern Cablevision Ltd.

1-800-661-1904

Internet:

Cablerocket

1-888-207-0203

Telus

1-877-310-TECH (8324)

Venners - VCS Internet

1-877-838-8448

Newspaper:

Whitecourt Star

(780) 778-3977

Radio:

The Rig - 96.7FM

(780) 778-5102

XM-FM 105.3

(780) 706-1053

WHITECOURT UTILITIES DEPARTMENT

The Town of Whitecourt provides water, sewer and refuse services for its residents.

All households are individually billed for water using a water meter. Individual household consumption changes from day to day, so every bill is different.

The Whitecourt Sewage Plant expansion was completed in 2002. Sewer charges are 94% of water charges.

The Town of Whitecourt contracts Northwest Sanitation to provide garbage collection services.

For more information on Whitecourt Utilities, click [here](#).

WHITECOURT WATER TREATMENT PLANT

The Town of Whitecourt has completed upgrades at the Water Treatment Plant. Upgrades included the addition of a pressure membrane micro-filtration system that removes all giardia and cryptosporidium from the water. This modern technology is new to Alberta, but has been used for a number of years throughout North America. The Town of Whitecourt is leading the way for this quality of water treatment in Alberta.

The Membrane System was installed within the footprint of the existing Water Treatment Plant and has allowed the treatment capacity to be tripled without doubling the size of the existing plant.

Based on recent incidents within parts of Canada and North America, Alberta Environment is requiring upgrades to the Canadian drinking water standards upon renewal of Municipalities Operating Approval. The new Membrane System meets and exceeds these requirements.

The pumphouse, built in 1988, draws water from the McLeod River and supplies it to the Water Treatment Plant and Millar Western Pulp Mill. The Town of Whitecourt draws 40 to 50 litres of water per second and the pulp mill draws approximately 400 litres per second.

For further information please contact the Planning and Works Department at (780) 778-2273.

WASTE MANAGEMENT AND RECYCLING FACILITIES

Transfer Station and Whitecourt Regional Landfill

The Town of Whitecourt and [Woodlands County](#) have a joint operational Landfill and Transfer Station to serve residents within the Town and Woodlands County. Together the organizations form the Regional Solid Waste Management Authority.

For more information on the Transfer Station, click [here](#).

Residential and commercial collection of garbage and Town waste (from downtown, recreation fields, park areas and other public places) is disposed of at the Landfill. For information on the Landfill's hours of operation, fees and what material is accepted, click [here](#).

Recycling

Northwest Sanitation operates a 24-hour recycling drop-off facility. If you require additional information on recycling contact Northwest Sanitation at (780) 778-4888, or click [here](#).

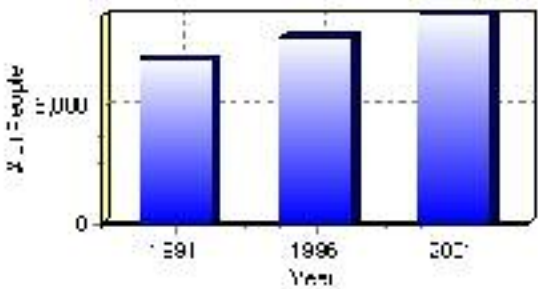
Population

Total Population

Population 2004*	8,747
Population 2003*	8,334
Population 2002*	8,334
Population 2001**	8,330
Population 2000*	8,008
Population 1996**	7,783
Population 1991**	6,938
Population % change 1991-1996	10.86%
Population % change 1996-2001	6.61%

* Source: Official Population List, Alberta Municipal Affairs
** Source: Statistics Canada 1991, 1996, & 2001 Census

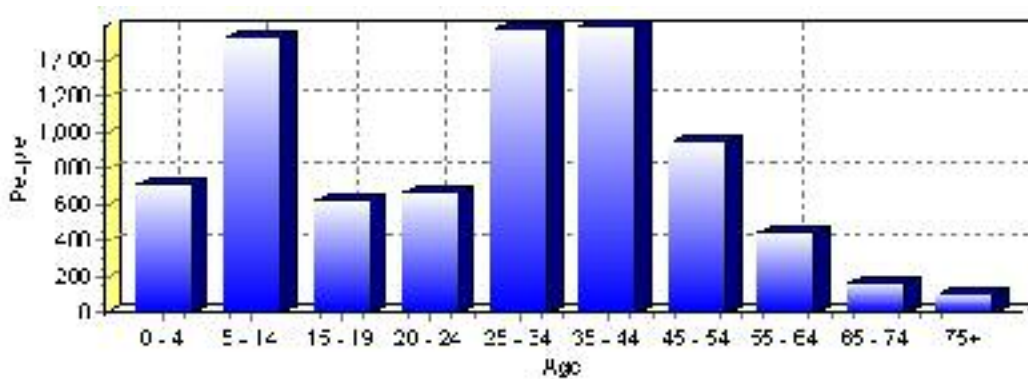
Total Population 1991-2001



Population by Age and Gender	1996 Male	1996 Female	1996 Total	2001 Male	2001 Female	2001 Total
Age 0 - 4	420	375	795	360	350	710
Age 5 - 14	760	690	1,450	750	770	1,520
Age 15 - 19	340	255	595	330	290	620
Age 20 - 24	345	305	650	360	305	665
Age 25 - 34	870	765	1,635	835	730	1,565
Age 35 - 44	770	675	1,445	845	745	1,590
Age 45 - 54	375	325	700	520	420	940
Age 55 - 64	170	135	305	240	210	450
Age 65 - 74	70	70	140	85	80	165
Age 75 and older	20	45	65	40	60	100
Total All Persons	4,155	3,630	7,785	4,370	3,960	8,330

Source: Statistics Canada 1996 & 2001 Census (numbers may not add up due to rounding)

Whitecourt Population by Age Group (2001)

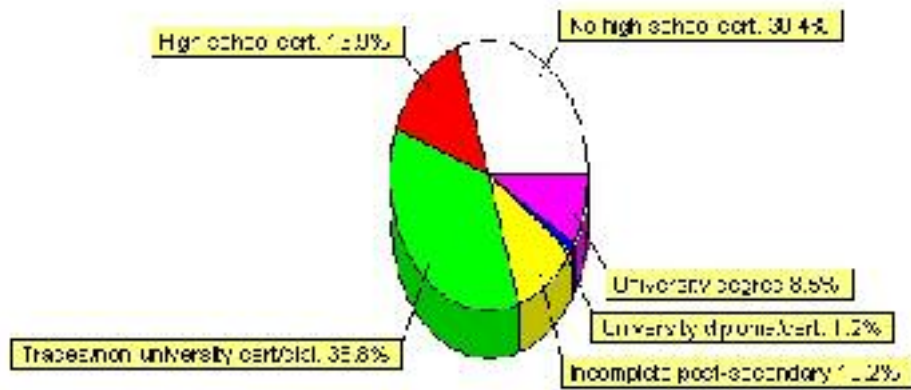


Education Statistics

Highest level of schooling for Population 20yrs and older	2001	%
People without high school certificates	1,650	30.36%
People with high school certificates	755	13.89%
People with trades or non-university certificate or diploma	1,945	35.79%
People with post-secondary education (not completed)	555	10.21%
People with university diploma/certificate	65	1.20%
People with university degree	460	8.46%
Total Population 20 years and older	5,435	100.00%

Source: Statistics Canada 2001 Census (numbers may not add up due to rounding)

Whitecourt Highest Level of Schooling 2001



Population with Post Secondary Qualifications	1996	%	2001	%
Agriculture and biological sciences	90	4.11%	75	3.04%
Commerce, management and business administration	405	18.49%	450	18.22%
Educational, recreational and counseling services	290	13.24%	185	7.49%
Engineering and applied science tech. and trades	830	37.90%	1,090	44.13%
Engineering and applied sciences	140	6.39%	175	7.09%
Fine and applied arts	105	4.79%	110	4.45%
Health professionals, science and technologies	180	8.22%	195	7.89%
Humanities and related fields	35	1.60%	65	2.63%
Mathematics and physical sciences	25	1.14%	0	0.00%
Social sciences and related fields	80	3.65%	120	4.86%
Other and/or no specialization	0	0.00%	0	0.00%
Total people with post secondary qualifications	2,190	100.00%	2,470	100.00%
Females with post-secondary qualifications	955	43.61%	1,000	40.49%
Males with post-secondary qualifications	1,235	56.39%	1,470	59.51%

Source: Statistics Canada 1996 & 2001 Census (numbers may not add up due to rounding)

Labour Force

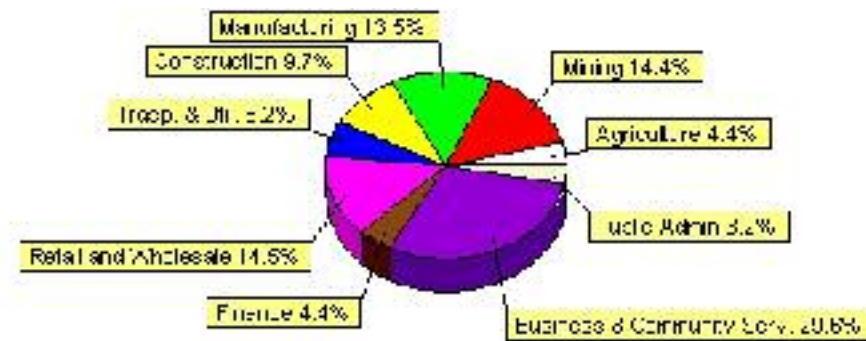
Labour force by activity	1996	2001
In the labour force, both sexes	4,455	5,060
Not in the labour force, both sexes	1,090	995
Total population 15 and over	5,550	6,055
Employed, both sexes	4,125	4,685
Unemployed, both sexes	335	375
Participation rate, both sexes	80.00%	84.00%
Unemployment rate, both sexes	7.00%	7.00%

Source: Statistics Canada 1996 & 2001 Census (numbers may not add up due to rounding)

Labour Force by Industry Division	1996	% of total	2001	% of total
Agriculture	165	3.75%	220	4.38%
Mining	510	11.60%	725	14.44%
Manufacturing	860	19.57%	680	13.55%
Construction	325	7.39%	485	9.66%
Transportation. & Utilities	340	7.74%	310	6.18%
Retail and Wholesale	750	17.06%	730	14.54%
Finance	105	2.39%	220	4.38%
Business & Community Services	1,110	25.26%	1,485	29.58%
Public Administration	50	1.14%	160	3.19%
Total All Industries	4,395	100.00%	5,020	100.00%

Source: Statistics Canada 1996 & 2001 Census (numbers may not add up due to rounding)

Whitecourt Labour Force By Industry - 2001



Labour Force by Major Occupational Groups	1996	%	2001	%
Management occupations	340	7.73%	550	10.96%
Business, Finances and administrative occupations	700	15.91%	730	14.54%
Natural and applied sciences and related occupations	200	4.55%	370	7.37%
Health occupations	80	1.82%	110	2.19%
Occupations in social science; education; government and religion	210	4.77%	175	3.49%
Occupations in art; culture; recreation and sport	35	0.80%	60	1.20%

Sales and service occupations	1,095	24.89%	1,130	22.51%
Trades; transport; equipment operators and related occupations	745	16.93%	1,175	23.41%
Occupations unique to primary industry	315	7.16%	420	8.37%
Occupations unique to processing; manufacturing and utilities	665	15.11%	290	5.78%
Occupations not elsewhere classified	60	1.36%	40	0.80%
Total - All Occupations (major groups)	4,400	100.00%	5,020	100.00%
Females - All Occupations	1,850	42.05%	2,120	42.23%
Males - All Occupations	2,550	57.95%	2,900	57.77%

Source: Statistics Canada 1996 & 2001 Census (numbers may not add up due to rounding)

Income

Family Income (Number of Families)	1996	%	2001	%
less than \$19,999	135	7.52%	255	14.29%
\$20,000 - \$39,999	235	13.09%	275	15.41%
\$40,000 - \$59,999	440	24.51%	345	19.33%
\$60,000 and over	985	54.87%	1,020	57.14%
Total number of families	1,795	100.00%	1,895	106.16%
Average family income	\$67,966		\$75,145	
Median family income	\$64,413		\$68,960	

Source: Statistics Canada 1996 & 2001 Census (numbers may not add up due to rounding)

Household Income (Number of Households)	1996	%	2001	%
less than \$19,999	335	12.96%	385	13.21%
\$20,000 - \$39,999	520	20.12%	440	15.09%
\$40,000 - \$59,999	550	21.28%	485	16.64%
\$60,000 and over	215	8.32%	1,610	55.23%
Total number of households	2,585	100.00%	2,915	100.00%
Average household income	\$60,281		\$69,894	
Median household income	\$56,649		\$63,899	

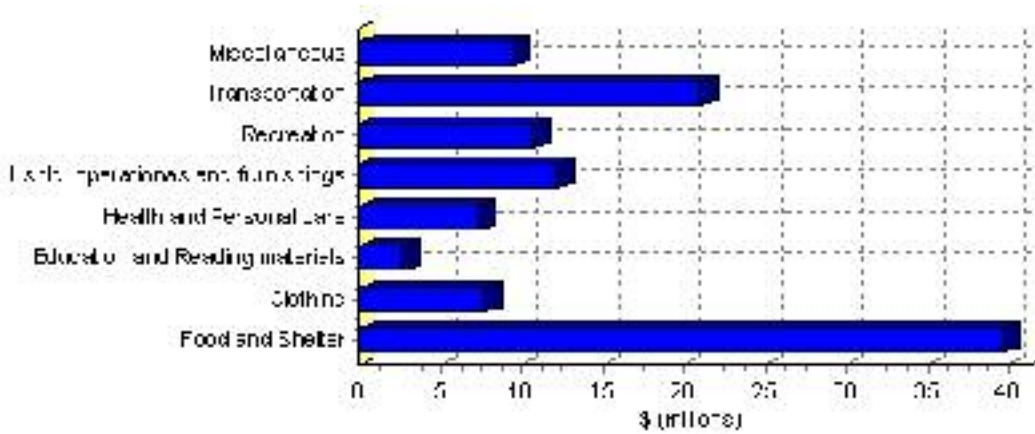
Source: Statistics Canada 1996 & 2001 Census (numbers may not add up due to rounding)

Family Expenditure

Expenditure Category	1992	% of total	1996	% of total
Food and Shelter	\$29,804,955	36.16%	\$39,717,345	35.75%
Clothing	\$5,954,875	7.23%	\$7,758,723	6.98%
Education and Reading materials	\$1,999,595	2.43%	\$2,680,311	2.41%
Health and Personal care	\$5,008,250	6.08%	\$7,340,915	6.61%
Hshld. operations and furnishings	\$9,168,885	11.13%	\$12,269,291	11.04%
Recreation	\$7,451,950	9.04%	\$10,726,923	9.65%
Transportation	\$16,735,275	20.31%	\$21,147,962	19.03%
Miscellaneous	\$6,281,210	7.62%	\$9,461,567	8.52%
Total Current Consumption	\$82,416,095	100.00%	\$111,103,037	100.00%
Total # of Households	2,340		2,585	
Average Consumption per Household	\$35,221		\$42,980	

Source: Statistics Canada Family Expenditure Survey 1992 & 1996 (numbers may not add up due to rounding).

Whitecourt Family Expenditures (1996)

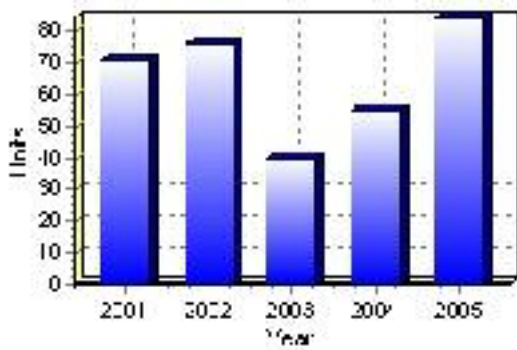


Building Permits

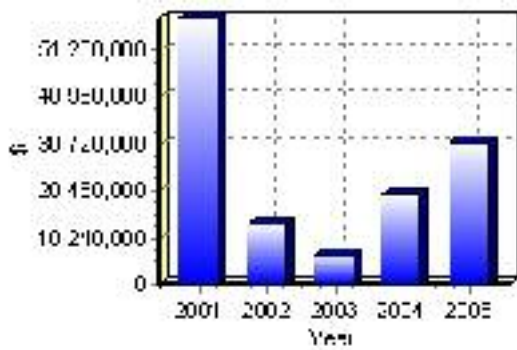
Total Building Permit Values	2001	2002	2003	2004	2005
Building Permits Value, Commercial	\$5,210,000	\$455,000	\$869,000	\$6,618,000	\$11,816,000
Building Permits Value, Industrial	\$44,690,000	\$1,609,000	\$538,000	\$3,758,000	\$5,041,000
Building Permits Value, Institutional	\$25,000	\$80,000	\$0	\$188,000	\$0
Building Permits Value, Residential	\$8,037,000	\$10,760,000	\$5,226,000	\$9,062,000	\$14,146,000
Building Permits Value, Total	\$57,962,000	\$12,904,000	\$6,633,000	\$19,626,000	\$31,003,000
Total Housing Starts	71	76	40	55	84

Source: Statistics Canada 2000-2004 Building Permits (numbers may not add up due to rounding)

Total Housing Starts



Value of Building Permits



Dwellings

Occupied Private Dwellings by Type	1996	% of total	2001	% of total
Apartments	510	19.73%	515	17.64%
Detached Duplexes	0	0.00%	65	2.23%
Movable Dwellings	525	20.31%	590	20.21%
Other single attached house	0	0.00%	0	0.00%
Row and semi-detached house	215	8.32%	220	7.53%
Single-detached house	1,325	51.26%	1,530	52.40%
Total number of occupied private dwellings	2,585	100.00%	2,920	100.00%
Private dwellings, owned	1,755	67.89%	2,095	71.75%
Private Dwellings, rented	830	32.11%	820	28.08%

Source: Statistics Canada 1996 & 2001 Census (numbers may not add up due to rounding)

Private Dwellings by Period of Construction	# of Dwellings	% of total
Period of construction, before 1946	25	0.86%
Period of construction, 1946 - 1960	95	3.26%
Period of construction, 1961 - 1970	440	15.12%
Period of construction, 1971 - 1980	865	29.73%
Period of construction, 1981 - 1990	715	24.57%
Period of construction, 1991 - 2001	770	26.46%
Total number of private dwellings constructed	2,910	100.00%

Source: Statistics Canada 2001 Census (numbers may not add up due to rounding)

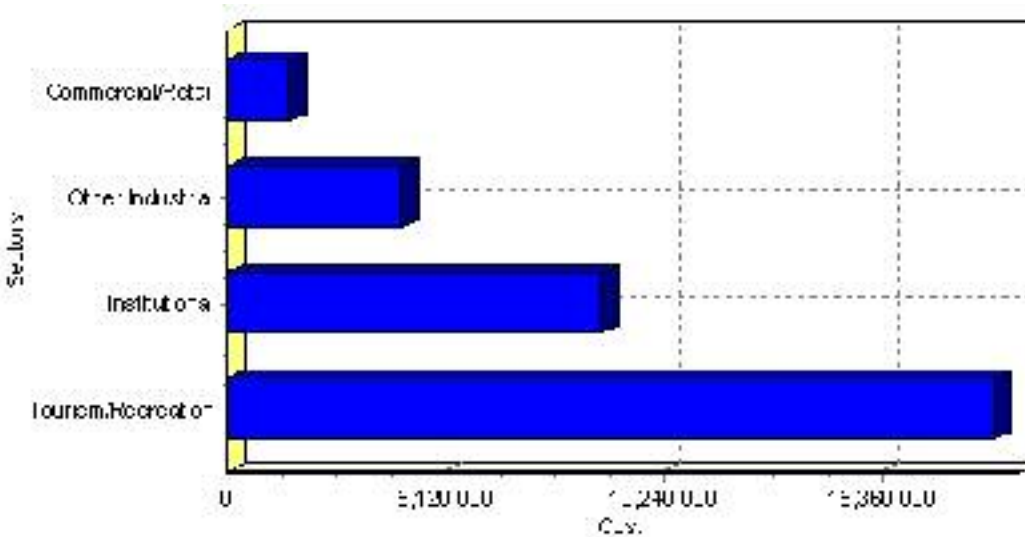
Projects

Summary of Projects in Whitecourt as of September 2006

Project Sector	Number of Projects	Project Cost
Tourism/Recreation	1	\$18,000,000
Institutional	2	\$8,800,000
Other Industrial	4	\$4,112,050
Commercial/Retail	2	\$1,450,000
Total	9	\$32,362,050

This inventory lists projects in Alberta that have recently been completed, are under construction, or are proposed to start construction. Not all projects are listed due to reasons of confidentiality and/or due to information not being available at the time of printing. Project data is obtained from public information sources, where possible, this data has been verified with the project proponent/developer, users of the Inventory may wish to confirm project data with the proponent/developer. The inventory does not breakdown project expenditures by any given year. The cost of a project is the value of expenditures expected over all phases of project construction, which may span over two or more years. Cost of projects listed in the Inventory are estimated values only. Source: Alberta Economic Development, 2004.

Value of Projects by Sector (as of September 2006)



Project Status	Number of Projects	Project Cost
Announced	4	\$4,262,050
Completed	1	\$3,800,000
Under Construction	4	\$24,300,000
Total	9	\$32,362,050

This inventory lists projects in Alberta that have recently been completed, are under construction, or are proposed to start construction. Not all projects are listed due to reasons of confidentiality and/or due to information not being available at the time of printing. Project data is obtained from public information sources, where possible, this data has been verified with the project proponent/developer, users of the Inventory may wish to confirm project data with the proponent/developer. The inventory does not breakdown project expenditures by any given year. The cost of a project is the value of expenditures expected over all phases of project construction, which may span over two or more years. Cost of projects listed in the Inventory are estimated values only. Source: Alberta Economic Development, 2004.

Largest Projects in Whitecourt as of September 2006

Company Name	Project Description	Project Location	Project Cost	Construction Schedule	Status
Town of Whitecourt	Whitecourt Woodlands Multi-Use Facility	Whitecourt	\$18,000,000	2006-2008	Under Construction
Lac Ste. Anne Foundation	Spruce View Lodge Expansion	Whitecourt	\$5,000,000	2006-2007	Under Construction
St. Joseph Parish / St. Joseph Church Building Committee	New Church	Whitecourt	\$3,800,000	2006-2006	Completed
Millar Western Forest Products	UPGRADE FOR NEW LINE	Whitecourt	\$1,412,050	2006-2006	Announced
Advanced Wireline	NEW INDUSTRIAL BUILDING	Whitecourt	\$1,300,000	2006-2006	Announced
A & W - Whitecourt	REPLACE RESTAURANT	Whitecourt	\$800,000	2006-2006	Announced
Select Productions	NEW INDUSTRIAL BUILDING	Whitecourt	\$750,000	2006-2006	Announced
Garrett Builders & Contractors Ltd.	2 New Industrial Buildings	Whitecourt	\$650,000	2005-2005	Under Construction
CCS Inc.	New Commercial Building	Whitecourt	\$650,000	2005-2005	Under Construction

Disclaimer: Information in this profile has been provided from a variety of external sources. Although every effort has been made to ensure the accuracy, currency and reliability of the content and data, AlbertaFirst.com Ltd. accepts no responsibility in this regard.

© AlbertaFirst.com Ltd., 2006.