

# Wheatland County

[www.wheatlandcounty.ca](http://www.wheatlandcounty.ca)

## Welcome



The prairie's natural beauty fills the eye in all parts of Wheatland County.

Explore the abundance and heritage of Wheatland County as the best place to

**LIVE, WORK and DO BUSINESS** in Alberta!

## Area Overview



From the golden fields near Cluny, to the badlands of the northeast, onto the tranquil ebb & flow of the Bow River near Carseland, your journey through **Wheatland County** will open your eyes, heart and mind to the abundance & diversity of it's natural resources and beauty. Wheatland County is a land, rich in every opportunity. **Come visit us and discover the possibilities!**

**Wheatland County** communities enjoy the conveniences and services of urban centres while maintaining the closeness to the beauty & nature of this vast land! Neighborhood is not just an area - as **Wheatland County** communities promote the true spirit of community, friendship and cooperation that's know to be part of Western heritage and hospitality.

Anywhere you venture in Wheatland County you are near a major urban centre - Calgary to the west, Brooks to the east, Drumheller to the north, and Strathmore at it's centre.

## Community Lifestyle

Wheatland County residents have enjoyed doing business, working and raising families for generations. And future residents can choose to live in an agriculturally oriented setting in our rural areas, a "home" town setting or within the convenience of one of our larger communities.

Recreation activities include outdoor pursuits such as fishing, boating, hunting, golfing, horseback ridng, and more! Parks, are large and small throughout our communities. Indoor activities include everything from curling, hockey, basketball, volleyball, football, soccer and martial arts to crafts and fine art acitivites, like music and theatre.

Hike a coulee, enjoy a relaxing summer day at a park, fish or canoe at Eagle Lake or at one of many nearby lakes or canals - explore the beauty and diversity of **Wheatland County!**

Indulge in the West's favourite sport - RODEO! **Wheatland County** is host to several Canadian and World Champion rodeos - Gleichen, Rockyford, Hussar and of course, the world renowned Heritage Days Stampede in Strathmore!

## Economic Base

Our proud heritage of independence and strong work ethic is well represented in the quality and presence of our farms and ranches

throughout Wheatland County. This pride is reflected by the community spirit and collective vision for the future. Dedicated stewardship of the land, once primarily agriculture, is now the strength of **Wheatland County**.

Though beef and grain production is still the main agricultural activity, many other agri-business opportunities are reaching fruition, maintaining our land, as our greatest resource. Throughout **Wheatland County** you will find ultramodern grain elevators, seed cleaning plants, hog production facilities and various smaller businesses servicing this continually booming sector.

Oil & Gas activity and support services provided by an array of small and large corporate companies offer employment and a strong economy to the residents of **Wheatland County**. Because of the close proximity to major transportation links to Calgary and other urban centres, commercial and industrial opportunities continue to grow - logistics, warehousing and distribution are just few growth opportunities **Wheatland County** holds. **Wheatland County** is in a most ideal position to offer resources and services to reputable organizations & enterprising entrepreneurs looking for strong, sustainable economic development.

Continuing growth and development of agribusiness, oil & gas, distribution and manufacturing will add to our existingly vibrant, economic outlook.

Recent designation of land located directly west of the Town of Strathmore along Trans Canada Highway, just east of Calgary, highlights the tremendous opportunity for enhanced economic growth within **Wheatland County**.

This West Highway #1 Area Structure Plan's objectives include:

- to accommodate development opportunities in **Wheatland County** for light to medium industrial and compatible commercial land uses.
- to provide longer-term base for future economic growth that will be of mutual benefit to the residents & communities of **Wheatland County** and the Town of Strathmore.
- to allow the continuation of existing land uses.
- to ensure an economical, user-pay road network, compatible with long range Provincial freeway development planning objectives.
- to ensure a high quality of development standards befitting proximity to the Trans Canada Highway.
- to provide for an effective development process in terms of application processing, engineering, landscaping, environmental and economic considerations.

The location of the Area Structure Plan relative to the Calgary Oil & Gas service industry, as well as its proximity to Strathmore, as a rapidly growing residential community, offers opportunities for long term development of industrial/commercial land uses. This designation allows for industrial land users in Calgary, to secure the type of access required to serve their operational hinterland in a flexible and convenient manner.

## Education

Educational facilities include schools for children from kindergarten to high school, and of course, post-secondary institutions, like the University of Calgary, SAIT, colleges and technical institutes are just minutes away.

## Emergency Services

**Wheatland County** has one of the most sophisticated E911 centers in Alberta with advanced life support ambulances, paramedic and hospital facilities. Fire and policing protection are provided through **Wheatland County** by professionally trained volunteer fire departments: RCMP, County Special Constables and Town Constables.

## Key Contacts for Business Development

### Municipal

Wheatland County  
Highway 1, RR 1  
Strathmore AB  
T1P 1J6  
Tel: (403)934-3321  
Fax: (403)934-4889

Ben Armstrong  
Reeve

Jennifer Deak  
County Manager  
[jennifer.deak@wheatlandcounty.ca](mailto:jennifer.deak@wheatlandcounty.ca)

## Location



Far enough removed from the hustle and bustle of the city, [Wheatland County](#) is the right location for everyone - parents raising a growing family, seniors seeking a strong support of community, aspiring entrepreneurs, small business owners and major commercial or industrial businesses.

## Taxation

	<u>Residential/Farmland</u>	<u>Non-Residential</u>
<b>2004</b>		
Municipal Tax Rate	6.6980	8.5030
Education - Alberta School Foundation Fund Tax Rate	4.7680	6.1410
Education Opted Out Tax Rate	4.7680	6.1410

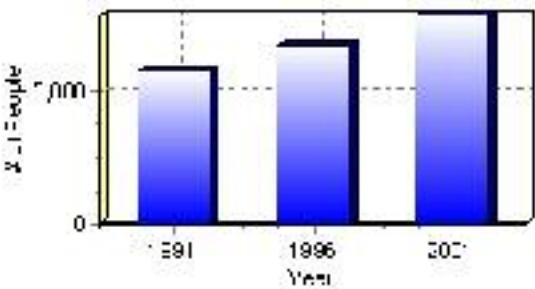
# Population

## Total Population

Population 2004*	7,889
Population 2003*	7,889
Population 2002*	7,889
Population 2001**	7,890
Population 2000*	7,240
Population 1996**	6,714
Population 1991**	5,779
Population % change 1991-1996	13.93%
Population % change 1996-2001	14.89%

\* Source: Official Population List, Alberta Municipal Affairs  
\*\* Source: Statistics Canada 1991, 1996, & 2001 Census

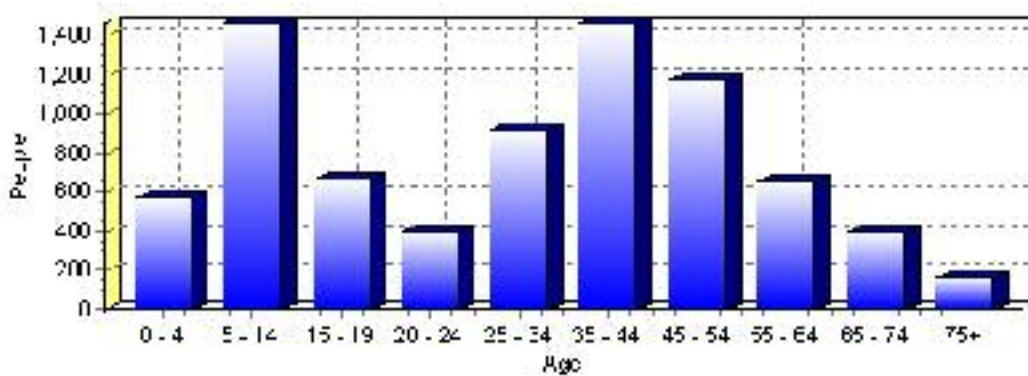
## Total Population 1991-2001



Population by Age and Gender	1996 Male	1996 Female	1996 Total	2001 Male	2001 Female	2001 Total
Age 0 - 4	290	285	575	305	265	570
Age 5 - 14	670	650	1,320	755	705	1,460
Age 15 - 19	275	240	515	340	330	670
Age 20 - 24	170	145	315	200	195	395
Age 25 - 34	480	505	985	455	470	925
Age 35 - 44	610	550	1,160	740	725	1,465
Age 45 - 54	455	420	875	635	545	1,180
Age 55 - 64	295	250	545	345	315	660
Age 65 - 74	165	140	305	215	180	395
Age 75 and older	75	55	130	75	90	165
Total All Persons	3,470	3,240	6,710	4,070	3,820	7,890

Source: Statistics Canada 1996 & 2001 Census (numbers may not add up due to rounding)

### Wheatland County Population by Age Group (2001)

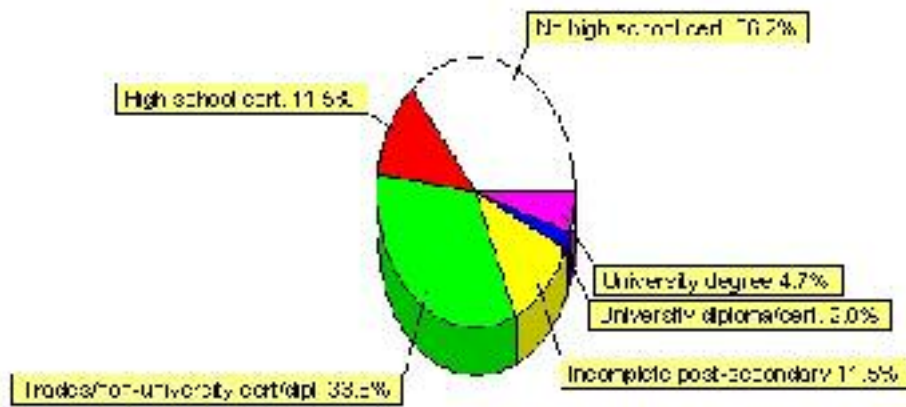


# Education Statistics

Highest level of schooling for Population 20yrs and older	2001	%
People without high school certificates	1,870	36.17%
People with high school certificates	595	11.51%
People with trades or non-university certificate or diploma	1,745	33.75%
People with post-secondary education (not completed)	595	11.51%
People with university diploma/certificate	105	2.03%
People with university degree	245	4.74%
Total Population 20 years and older	5,170	100.00%

Source: Statistics Canada 2001 Census (numbers may not add up due to rounding)

## Wheatland County Highest Level of Schooling 2001



Population with Post Secondary Qualifications	1996	%	2001	%
Agriculture and biological sciences	245	14.45%	260	12.26%
Commerce, management and business administration	245	14.45%	435	20.52%
Educational, recreational and counseling services	155	9.14%	190	8.96%
Engineering and applied science tech. and trades	620	36.58%	720	33.96%
Engineering and applied sciences	25	1.47%	30	1.42%
Fine and applied arts	90	5.31%	140	6.60%
Health professionals, science and technologies	235	13.86%	165	7.78%
Humanities and related fields	25	1.47%	35	1.65%
Mathematics and physical sciences	40	2.36%	45	2.12%
Social sciences and related fields	20	1.18%	100	4.72%
Other and/or no specialization	0	0.00%	10	0.47%
Total people with post secondary qualifications	1,695	100.00%	2,120	100.00%
Females with post-secondary qualifications	750	44.25%	980	46.23%
Males with post-secondary qualifications	945	55.75%	1,140	53.77%

Source: Statistics Canada 1996 & 2001 Census (numbers may not add up due to rounding)

## Labour Force

Labour force by activity	1996	2001
In the labour force, both sexes	3,860	4,405
Not in the labour force, both sexes	995	1,405
Total population 15 and over	4,855	5,810
Employed, both sexes	3,685	4,300
Unemployed, both sexes	175	100
Participation rate, both sexes	79.00%	76.00%
Unemployment rate, both sexes	4.00%	2.00%

Source: Statistics Canada 1996 & 2001 Census (numbers may not add up due to rounding)

Labour Force by Industry Division	1996	% of total	2001	% of total
Agriculture	1,680	43.92%	1,570	35.68%
Mining	90	2.35%	110	2.50%
Manufacturing	225	5.88%	290	6.59%
Construction	270	7.06%	340	7.73%
Transportation. & Utilities	265	6.93%	200	4.55%
Retail and Wholesale	405	10.59%	515	11.70%
Finance	80	2.09%	110	2.50%
Business & Community Services	610	15.95%	1,030	23.41%
Public Administration	175	4.58%	230	5.23%
Total All Industries	3,825	100.00%	4,400	100.00%

Source: Statistics Canada 1996 & 2001 Census (numbers may not add up due to rounding)

### Wheatland County Labour Force By Industry - 2001



Labour Force by Major Occupational Groups	1996	%	2001	%
Management occupations	215	5.62%	280	6.36%
Business, Finances and administrative occupations	475	12.42%	550	12.50%
Natural and applied sciences and related occupations	110	2.88%	85	1.93%
Health occupations	120	3.14%	120	2.73%
Occupations in social science; education; government and religion	85	2.22%	150	3.41%
Occupations in art; culture; recreation and sport	50	1.31%	45	1.02%

Sales and service occupations	525	13.73%	670	15.23%
Trades; transport; equipment operators and related occupations	570	14.90%	840	19.09%
Occupations unique to primary industry	1,555	40.65%	1,515	34.43%
Occupations unique to processing; manufacturing and utilities	115	3.01%	150	3.41%
Occupations not elsewhere classified	35	0.92%	10	0.23%
Total - All Occupations (major groups)	3,825	100.00%	4,400	100.00%
Females - All Occupations	1,585	41.44%	1,865	42.39%
Males - All Occupations	2,240	58.56%	2,535	57.61%

Source: Statistics Canada 1996 & 2001 Census (numbers may not add up due to rounding)

---



## Income

<b>Family Income (Number of Families)</b>	<b>1996</b>	<b>%</b>	<b>2001</b>	<b>%</b>
less than \$19,999	130	8.07%	165	9.71%
\$20,000 - \$39,999	455	28.26%	420	24.71%
\$40,000 - \$59,999	450	27.95%	475	27.94%
\$60,000 and over	575	35.71%	555	32.65%
Total number of families	1,610	100.00%	1,615	95.00%
Average family income	\$55,405		\$61,114	
Median family income	\$50,142		\$55,101	

Source: Statistics Canada 1996 & 2001 Census (numbers may not add up due to rounding)

<b>Household Income (Number of Households)</b>	<b>1996</b>	<b>%</b>	<b>2001</b>	<b>%</b>
less than \$19,999	255	12.91%	320	13.39%
\$20,000 - \$39,999	565	28.61%	525	21.97%
\$40,000 - \$59,999	520	26.33%	525	21.97%
\$60,000 and over	205	10.38%	1,025	42.89%
Total number of households	1,975	100.00%	2,390	100.00%
Average household income	\$51,772		\$58,228	
Median household income	\$47,271		\$51,810	

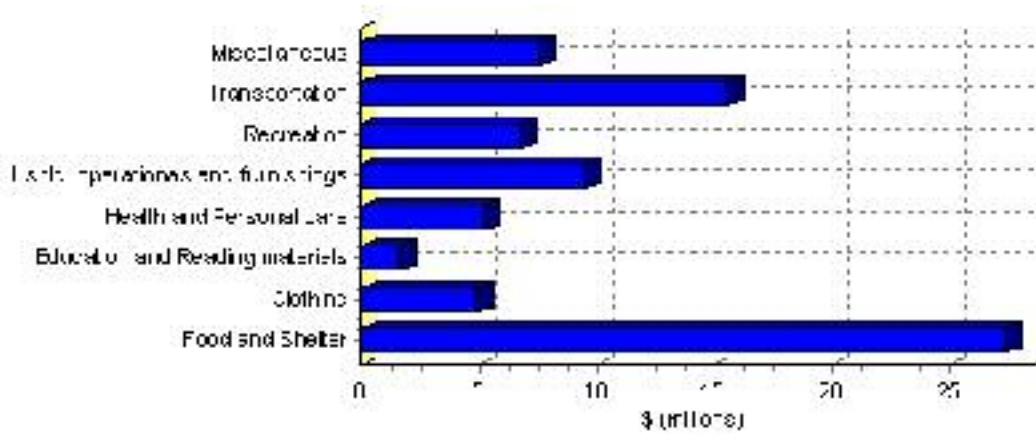
Source: Statistics Canada 1996 & 2001 Census (numbers may not add up due to rounding)

# Family Expenditure

Expenditure Category	1992	% of total	1996	% of total
Food and Shelter	\$19,774,425	36.67%	\$27,396,456	34.85%
Clothing	\$3,790,635	7.03%	\$4,973,425	6.33%
Education and Reading materials	\$1,218,820	2.26%	\$1,658,368	2.11%
Health and Personal care	\$3,321,585	6.16%	\$5,156,731	6.56%
Hshld. operations and furnishings	\$5,961,985	11.06%	\$9,532,855	12.13%
Recreation	\$4,622,490	8.57%	\$6,773,118	8.62%
Transportation	\$11,011,420	20.42%	\$15,573,395	19.81%
Miscellaneous	\$4,215,240	7.82%	\$7,545,439	9.60%
Total Current Consumption	\$53,928,975	100.00%	\$78,609,787	100.00%
Total # of Households	1,670		1,977	
Average Consumption per Household	\$32,293		\$39,762	

Source: Statistics Canada Family Expenditure Survey 1992 & 1996 (numbers may not add up due to rounding).

## Wheatland County Family Expenditures (1996)

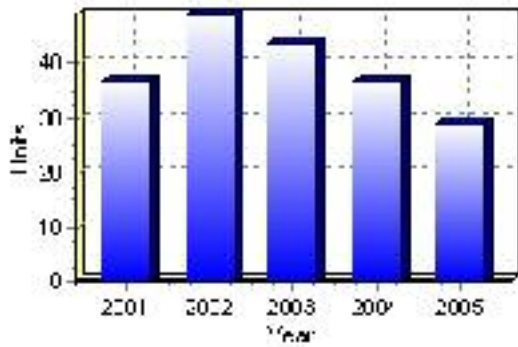


# Building Permits

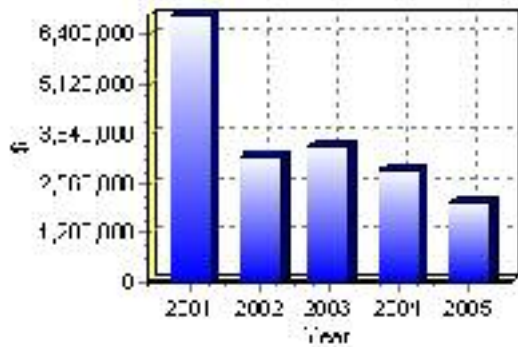
Total Building Permit Values	2001	2002	2003	2004	2005
Building Permits Value, Commercial	\$240,000	\$210,000	\$150,000	\$150,000	\$90,000
Building Permits Value, Industrial	\$4,270,000	\$151,000	\$90,000	\$120,000	\$30,000
Building Permits Value, Institutional	\$80,000	\$0	\$0	\$0	\$0
Building Permits Value, Residential	\$2,292,000	\$2,917,000	\$3,266,000	\$2,613,000	\$1,931,000
Building Permits Value, Total	\$6,882,000	\$3,278,000	\$3,506,000	\$2,883,000	\$2,051,000
Total Housing Starts	37	49	44	37	29

Source: Statistics Canada 2000-2004 Building Permits (numbers may not add up due to rounding)

## Total Housing Starts



## Value of Building Permits



## Dwellings

<b>Occupied Private Dwellings by Type</b>	<b>1996</b>	<b>% of total</b>	<b>2001</b>	<b>% of total</b>
Apartments	10	0.51%	0	0.00%
Detached Duplexes	30	1.52%	5	0.21%
Movable Dwellings	180	9.11%	310	12.97%
Other single attached house	0	0.00%	5	0.21%
Row and semi-detached house	10	0.51%	25	1.05%
Single-detached house	1,740	88.10%	2,040	85.36%
Total number of occupied private dwellings	1,975	100.00%	2,390	100.00%
Private dwellings, owned	1,570	79.49%	2,060	86.19%
Private Dwellings, rented	405	20.51%	330	13.81%

Source: Statistics Canada 1996 & 2001 Census (numbers may not add up due to rounding)

<b>Private Dwellings by Period of Construction</b>	<b># of Dwellings</b>	<b>% of total</b>
Period of construction, before 1946	465	19.46%
Period of construction, 1946 - 1960	290	12.13%
Period of construction, 1961 - 1970	270	11.30%
Period of construction, 1971 - 1980	535	22.38%
Period of construction, 1981 - 1990	305	12.76%
Period of construction, 1991 - 2001	525	21.97%
Total number of private dwellings constructed	2,390	100.00%

Source: Statistics Canada 2001 Census (numbers may not add up due to rounding)

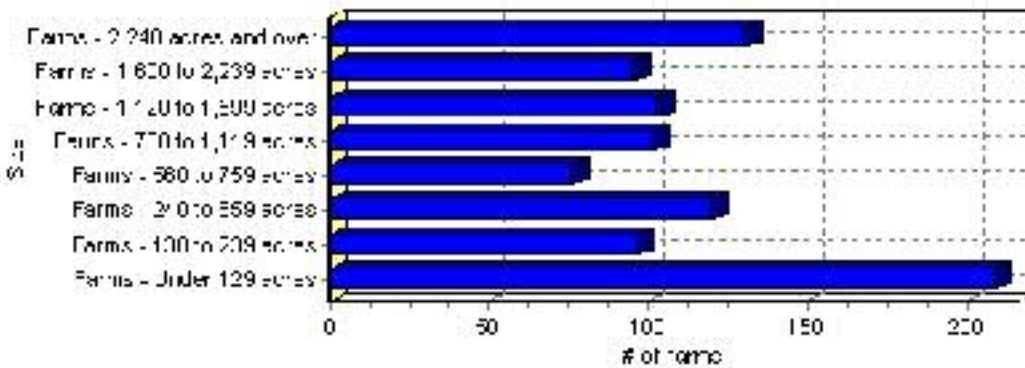
# Farming

Wheatland County Total Farm Area : 930 acres

Farms by Total Farm Area (2001)	# of Farms	% of total
Farms - Under 129 acres	209	22.38%
Farms - 130 to 239 acres	97	10.39%
Farms - 240 to 559 acres	120	12.85%
Farms - 560 to 759 acres	76	8.14%
Farms - 760 to 1,119 acres	102	10.92%
Farms - 1,120 to 1,599 acres	103	11.03%
Farms - 1,600 to 2,239 acres	96	10.28%
Farms - 2,240 acres and over	131	14.03%
Total number of farms reporting	934	100.00%

Source: Statistics Canada 2001 Census of Agriculture(numbers may not add up due to rounding)

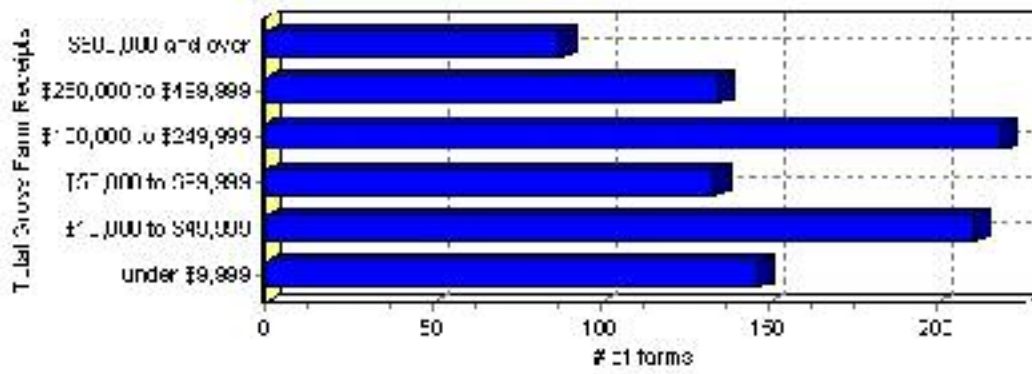
## # of Farms by Total Farm Area



Farms by Total Gross Farm Receipts - 2001	# of Farms	% of total
Farms gross farm receipts - under \$9,999	147	15.74%
Farms gross farm receipts - \$10,000 to \$49,999	211	22.59%
Farms gross farm receipts - \$50,000 to \$99,999	134	14.35%
Farms gross farm receipts - \$100,000 to \$249,999	219	23.45%
Farms gross farm receipts - \$250,000 to \$499,999	135	14.45%
Farms gross farm receipts - \$500,000 and over	88	9.42%
Total number of farms reporting	934	100.00%

Source: Statistics Canada 2001 Census of Agriculture(numbers may not add up due to rounding)

## Total Gross Farm Receipts

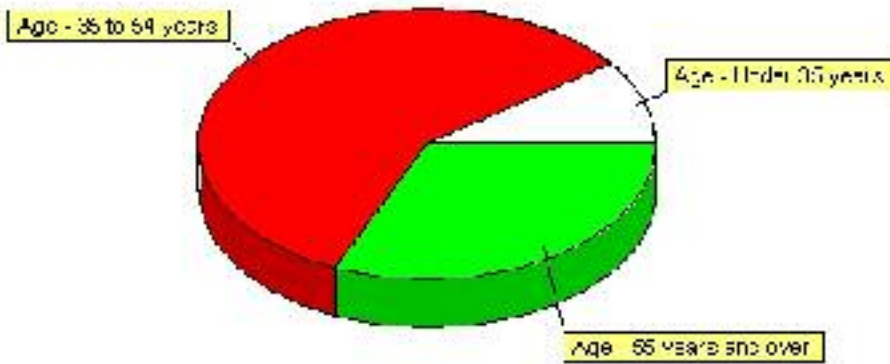


## Farming, Continued

Characteristics of Farm Operators	#	%
Age - Under 35 years	135	10.15%
Age - 35 to 54 years	770	57.89%
Age - 55 years and over	420	31.58%
Average age of operators	49	
Number of operators - Female	390	29.32%
Number of operators - Male	940	70.68%
Total number of operators reporting	1,330	100.00%

Source: Statistics Canada 2001 Census of Agriculture(numbers may not add up due to rounding)

### Age of Farm Operators



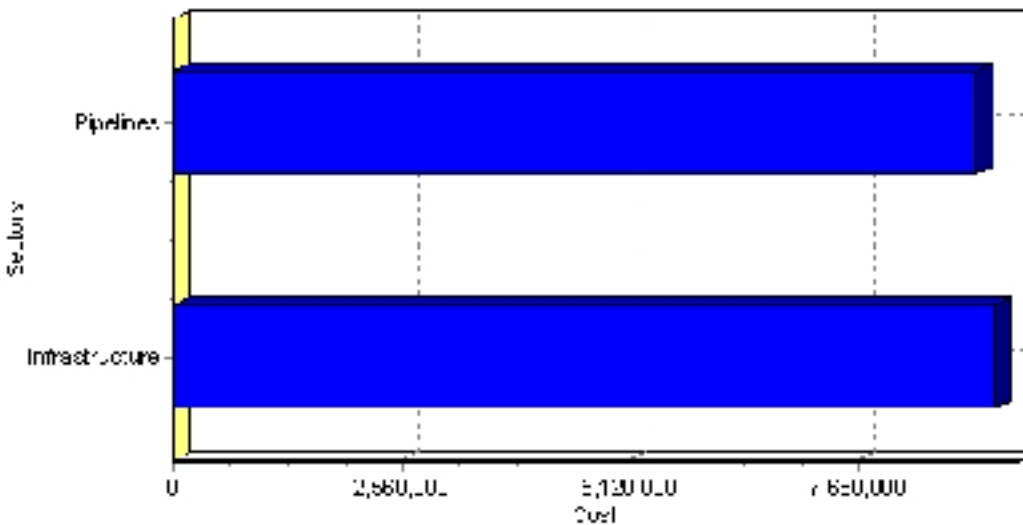
# Projects

## Summary of Projects in Wheatland County as of September 2006

Project Sector	Number of Projects	Project Cost
Infrastructure	2	\$9,200,000
Pipelines	1	\$9,000,000
Total	3	\$18,200,000

This inventory lists projects in Alberta that have recently been completed, are under construction, or are proposed to start construction. Not all projects are listed due to reasons of confidentiality and/or due to information not being available at the time of printing. Project data is obtained from public information sources, where possible, this data has been verified with the project proponent/developer, users of the Inventory may wish to confirm project data with the proponent/developer. The inventory does not breakdown project expenditures by any given year. The cost of a project is the value of expenditures expected over all phases of project construction, which may span over two or more years. Cost of projects listed in the Inventory are estimated values only. Source: Alberta Economic Development, 2004.

## Value of Projects by Sector (as of September 2006)



Project Status	Number of Projects	Project Cost
Announced	1	\$9,000,000
Completed	1	\$700,000
Under Construction	1	\$8,500,000
Total	3	\$18,200,000

This inventory lists projects in Alberta that have recently been completed, are under construction, or are proposed to start construction. Not all projects are listed due to reasons of confidentiality and/or due to information not being available at the time of printing. Project data is obtained from public information sources, where possible, this data has been verified with the project proponent/developer, users of the Inventory may wish to confirm project data with the proponent/developer. The inventory does not breakdown project expenditures by any given year. The cost of a project is the value of expenditures expected over all phases of project construction, which may span over two or more years. Cost of projects listed in the Inventory are estimated values only. Source: Alberta Economic Development, 2004.



## Largest Projects in Wheatland County as of September 2006

Company Name	Project Description	Project Location	Project Cost	Construction Schedule	Status
Town of Strathmore	Bow Tertiary Outfall Pipeline	Wheatland County (Strathmore to Bow River)	\$9,000,000	2006-2006	Announced
Alberta Infrastructure and Transportation	Highway 1 Grade, Base and Pave Roadside Turnout	Wheatland County (N of Gleichen)	\$8,500,000	2005-2006	Under Construction
Wheatland County	Replacement of Water Storage Facility	Wheatland County (Rosebud)	\$700,000	2006-2006	Completed

Disclaimer: Information in this profile has been provided from a variety of external sources. Although every effort has been made to ensure the accuracy, currency and reliability of the content and data, AlbertaFirst.com Ltd. accepts no responsibility in this regard.

© AlbertaFirst.com Ltd., 2006.