

Elk Point

www.elkpoint.ca

Welcome

Welcome to the Town of Elk Point. We hope that the information contained within this profile is useful. If additional information is required, please visit our website Town of Elk Point, or please contact our representatives from the "Key Contacts" section.

Area Overview

The Town of Elk Point, with a population of 1,440, is located in the northeastern part of the province. It was incorporated as a town in 1962.

Elk Point has a full range of services: food and convenience stores, two bakeries, a pharmacy, clothing and variety stores, gift/trophy shop, service stations, towing service, tire and automotive supply outlets, 1 hardware store, 3 liquor stores, numerous restaurants, lounges, a hotel, 2 motels, a full service RV park, golf course, laundromats, dentist, doctors, health Centre and R.C.M.P.

Elk Point is surrounded by many scenic lakes and provincial campsites. An impressive Fur Trade Interpretive Centre is located near the Buckingham House and Fort George fort sites and is open for tourists in the summer. Just behind the Elk Point Library is a 100 foot long historical mural painted by a local artist, where colourful images of the past trace local history from the Northwest Rebellion to the present. On the North Hill, overlooking Elk Point, stands a 32-foot chainsaw carved statue of Hudson's Bay Surveyor Peter Fidler.

Community Services

Municipal

Town of Elk Point
Box 448
Elk Point, Alberta
T0A 1A0
Telephone: 780-724-3810
Fax: 780-724-2762
E-mail: town@elkpoint.ca
Website: www.elkpoint.ca

Municipal Library - 780-724-3737

Provincial

Advanced Education
Attorney General
Recreation and Parks
Agriculture

Federal

Canada Post Office
Royal Canadian Mounted Police

Community Lifestyle

Recreation

Elk Point has the following recreational facilities: 1 arena, 6 ball diamonds, 2 gymnasiums, 1 senior recreational facility, 1 double tennis court, 1 curling rink, 1-9 hole golf course, 1 community hall, gym and the Agricultural Society Riding Barn & Fair Grounds.

Elk Point has several parks and lakes within a 20 kilometre radius of town, namely Whitney Lakes Provincial Park, the Kehewin Recreation Area, Lac Bellevue Municipal Recreation Area, and Stony Lake Recreation Area. Elk Point also has a campground on the outskirts of the town beside the 9 hole golf course and 3 ball diamonds. There is also a full service campground in the town limits located at the north end of town on highway 41 (operates from mid May to mid October). Whitney and Ross Lakes lie to the east, Muriel Lake to the north-east, Kehewin Lake to the north and Stony Lake to the west.

As well, the Fort George-Buckingham House Interpretive Centre was recently constructed as a tourist attraction at the historic sites of the two forts.

Elk Point in partnership with Muni-Corr has developed the old abandoned railline into 300 km of Multi-use trails.

Community Organizations

Auto Club
Chamber of Commerce
Education Support Council
Elk Point & District Interagency Committee
Elks Lodge No. 460
Elk Point Legion
4-H Multi Club
Girl Guides of Canada
Lions/Lioness Club
Minor Hockey Association
Order of the Royal Purple
Pacers Basketball Team
Pioneer Circle Society
Figure Skating Club
Slow Pitch League
Soccer Club
Tennis club
TOPS
Ukrainian Dance Club
Oilmen's Association
Community Advisory Policing Committee
Curling Club
4-H Light Horse Club
Gymnastics Club
Grief Support Group
Interagency Health Committee
Minor Ball Association
Palliative Care
Scouts

Religious Facilities

Ukrainian Orthodox Church
Ukrainian Catholic Church
Roman Catholic Church
United Church of Canada

Baptist Church
Christian Community Church.

Special Annual Events/Attractions

Antique Car Show -- June
Stony Lake Stampede -- July
Canada Day Celebrations -- July 1
Whitney Lake Rodeo -- July
Oilmen's Golf Tournament -- August
Other events located on (<http://albertahub.com>) Community Events

Elk Point has the following performing arts: Elk Point Choral Society; Singing and Performing Artists [Drama], Elk Point & District Ukrainian Dancers.

Hospitality

Accommodation

Fort George Motel
Hilltop Motor Inn

Restaurants

Empress Family Restaurant
Foot Prints Subs & Arcade
Wally's Cafe and Lounge
Elk Point Burger Bar Ltd.
As well as food locations - Tags and Hillside Service

Economic Base

The town's economic base is defined by agriculture, oil and gas, salt mining and tourism. Over 1/3 of the town's labour force is employed in the primary sector or resource extraction.

Economic Facts

Elk Point is in a very prolific heavy oil and gas reserve field. Therefore many oil & gas servicing companies are located in Elk Point, such as E-Can Oilfield Services Ltd., Tarsands, Pan Canadian Petroleum Ltd., Ranger Oil, Union Pacific Resources Inc., Lloydminster Heavy Crude Services Ltd., Kudu Industries Inc., and many others.

Elk Point Truss Ltd., the only manufacturing facility in Elk Point, manufactures trusses for residential and industrial construction companies.

Major Businesses Products/Services

Canadian Salt Company Salt Processing
Elk Point Truss Construction Materials
E-Can Oilfield Services Oil and Gas
Canadian Natural Resources Oil and Gas
Canadian Crude Separators Inc. Oil and Gas Heavy Crude Oil and Gas
Gibbsons Oil and Gas

Financial Institutions

Alberta Treasury Branch
Toronto Dominion Bank

Education

Elk Point is part of the greater St. Paul Regional Education School Division #1, headquartered in St. Paul [telephone: 780-645-3323].

Daycare/Nursery

1 Playschool and Kindergarten

Public

Public schools in Elk Point include Elk Point Elementary School [K-6] and F.G. Miller Junior/Senior High School [7-12].

Separate

The nearest separate schools are in St. Paul, which is part of the Glen Avon Protestant Separate School District #5, headquartered in St. Paul [telephone: 780-645-3237].

Private

N/A

Emergency Services

Fire Protection

Elk Point is served by a 25-member volunteer fire department [telephone: 780-724-3511] or by calling 911.

Police Services

Elk Point is served by a 6-officer local detachment Royal Canadian Mounted Police [RCMP] [telephone: 780-724-3829].

Ambulance Services

Elk Point and District Ambulance Service [telephone: 780-724-4040 or 911] serves Elk Point, St. Paul and the surrounding area.

Health Care

The Elk Point Health Centre has 10 acute care beds and Parkview Extended Care has 30 long-term care beds. It has a professional staff of 26, including 2 general practitioners.

Other health facilities include 2 medical clinics, Heritage Lodge, 1 health unit and 1 dentist office.

Key Contacts for Business Development

Municipal

Town of Elk Point
Box 448
Elk Point, Alberta
T0A 1A0
Telephone: 780-724-3810
Fax: 780-724-2762
Email: town@elkpoint.ca
Website: www.elkpoint.ca

Parrish Tung
Mayor

Myron Goyan
Town Manager
mjgoyan@elkpoint.ca

Sandy Smith, President
Elk Point Chamber of Commerce
Box 639
Elk Point, AB T0A 1A0
Phone: 780-724-2966

Provincial (Updated May 2006)

Alberta Economic Development
Box 412
Room 308, Provincial Building
5025 - 49 Avenue
St. Paul, Alberta
T0A 3A4
Tel: 780-645-6358
Fax: 780-645-6241
Garry Krause, *Regional Manager*
Maryann Robinson, *Client Service Representative*

REACH Corporation (A Community Futures Corporation)
Dick Millar - *Acting General Manager*
5015 - 49 Avenue
St. Paul, Alberta
T0A 3A4
(780) 645-5782

Ray Danyluk
Member of the Legislative Assembly (MLA)
Lac La Biche - St. Paul Constituency

Constituency Office
4434-50th Avenue
St. Paul, AB
T0A 3A2
Phone: (780) 645-6999
Toll Free: 1-866-674-6999
Fax: (780) 645-5787
laclabiche.stpaul@assembly.ab.ca

Legislature Office
#503 Legislature Building
10800-97 Avenue
Edmonton, AB
T5K - 2B6
Phone: (780) 415-9578
Fax: (780) 422-6284

Federal (Updated May 2006)

[Member of Parliament-Westlock--St. Paul, Alberta](#)
STORSETH, Brian (Conservative)

[Parliamentary Address](#)

House of Commons
Ottawa, Ontario
K1A 0A6
Telephone: (613) 996-1783
Fax: (613) 995-1415
E-Mail: Storseth.B@parl.gc.ca

[Constituency Address](#)

Address pending, Alberta

Location

The Town of Elk Point is situated in the County of St. Paul #19, on Highway 41. It is approximately 64 km north of Vermilion and 250 km east of Edmonton via Highways 41 and 16.

Post Secondary Education

Local post-secondary educational opportunities are available through the Elk Point Further Education Council.

Taxation

	<u>Residential/Farmland</u>	<u>Non-Residential</u>
2005		
Municipal Tax Rate	11.0330	20.1930
Education - Alberta School Foundation Fund Tax Rate	4.7780	7.1220

Mill Rates [2003]

Residential - 16.244
Non-Residential - 27.738
Non-Residential Vacant - 30.337
Apart/4 plexes- 30.737

Transportation

Air Service

Elk Point has a local air strip with a 1,371 metre asphalt runway. Condition of runway can be obtained by calling 1-780-645-3006. The nearest commercial and air freight service is at Lloydminster [120 km] and Cold Lake [102 km].

Elk Point in partnership with Muni-Corr has developed 300 kms of Multi-Use trails that join communities via the old abandoned railline.

Highways

Elk Point is situated on Highway 41 and connects north to Highway 28 and south to

Highway 16.

Trucking Firms

B & R Transport
Highway 28 Freightways
Glendon Transport

Bus Services

Quality Time Tours provides regularly scheduled inter-community service, connecting to Greyhound.

Couriers and Taxis

Loomis and Purolator serve Elk Point out of Vermilion.

Utilities

Electrical Power

ATCO
Telephone: 1-800-668-2248

Direct Energy Regulated Services

Telephone: 1-888-420-3181

Natural Gas

AltaGas
Leduc, Alberta
Telephone: 1-866-222-2067

Telephone

Alberta Government Telephones Ltd.
Edmonton, Alberta
Telephone: 780-310-2255

Water Supply

The source of water is the North Saskatchewan River. A new water treatment plant was installed in 1986, which is capable of serving a population of 2,500 people. Commercial and residential usage rates are \$40.00 per month for the first 14 cubic metres, and \$1.32 for each cubic metre over.

Waste Management

Sewage collection is a piped system and treatment is provided by aerated ponds which was upgraded in 1998.

Elk Point has a bottle depot for the recycling of plastics, a paper recycling depot, and a sanitary landfill site.

Residential and commercial garbage is collected once a week, with disposal at a modified landfill located 9 km from town. There is an \$12.00 charge per month for weekly garbage pick-up.

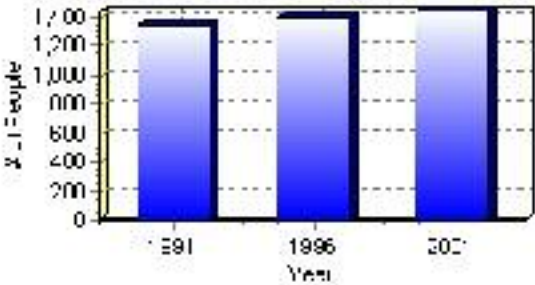
Population

Total Population

Population 2004*	1,440
Population 2003*	1,440
Population 2002*	1,440
Population 2001**	1,440
Population 2000*	1,492
Population 1996**	1,403
Population 1991**	1,341
Population % change 1991-1996	4.42%
Population % change 1996-2001	2.57%

* Source: Official Population List, Alberta Municipal Affairs
** Source: Statistics Canada 1991, 1996, & 2001 Census

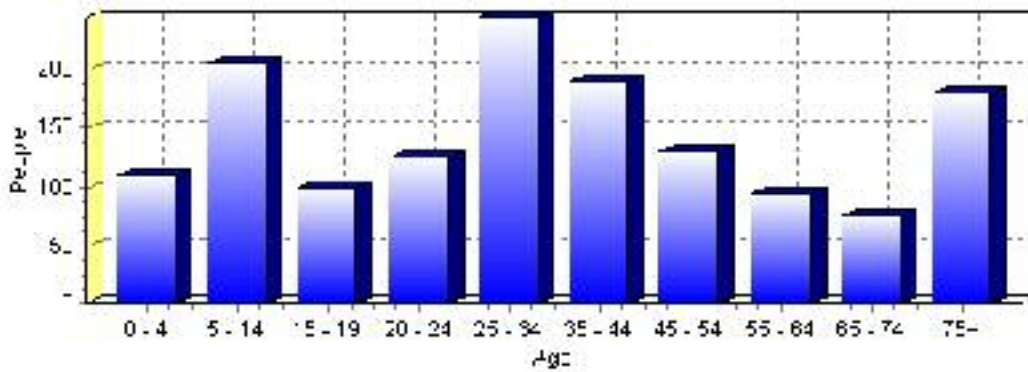
Total Population 1991-2001



Population by Age and Gender	1996 Male	1996 Female	1996 Total	2001 Male	2001 Female	2001 Total
Age 0 - 4	60	65	125	50	60	110
Age 5 - 14	90	100	190	100	105	205
Age 15 - 19	45	55	100	55	45	100
Age 20 - 24	75	45	120	65	60	125
Age 25 - 34	100	105	205	140	105	245
Age 35 - 44	100	85	185	105	85	190
Age 45 - 54	55	60	115	65	65	130
Age 55 - 64	50	50	100	45	50	95
Age 65 - 74	45	55	100	40	35	75
Age 75 and older	65	105	170	60	120	180
Total All Persons	680	720	1,400	715	725	1,440

Source: Statistics Canada 1996 & 2001 Census (numbers may not add up due to rounding)

Elk Point Population by Age Group (2001)

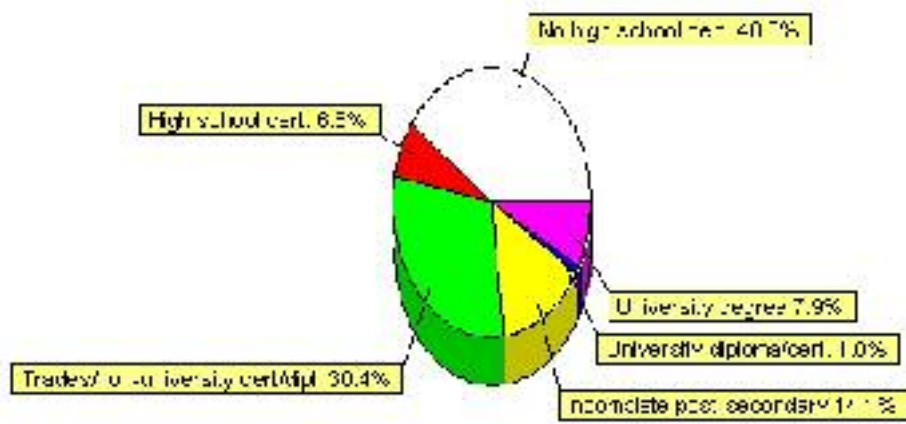


Education Statistics

Highest level of schooling for Population 20yrs and older	2001	%
People without high school certificates	385	40.31%
People with high school certificates	65	6.81%
People with trades or non-university certificate or diploma	290	30.37%
People with post-secondary education (not completed)	135	14.14%
People with university diploma/certificate	10	1.05%
People with university degree	75	7.85%
Total Population 20 years and older	955	100.00%

Source: Statistics Canada 2001 Census (numbers may not add up due to rounding)

Elk Point Highest Level of Schooling 2001



Population with Post Secondary Qualifications	1996	%	2001	%
Agriculture and biological sciences	35	8.43%	20	5.41%
Commerce, management and business administration	55	13.25%	65	17.57%
Educational, recreational and counseling services	75	18.07%	20	5.41%
Engineering and applied science tech. and trades	115	27.71%	130	35.14%
Engineering and applied sciences	10	2.41%	20	5.41%
Fine and applied arts	20	4.82%	15	4.05%
Health professionals, science and technologies	50	12.05%	45	12.16%
Humanities and related fields	40	9.64%	15	4.05%
Mathematics and physical sciences	0	0.00%	10	2.70%
Social sciences and related fields	30	7.23%	30	8.11%
Other and/or no specialization	0	0.00%	10	2.70%
Total people with post secondary qualifications	415	100.00%	370	100.00%
Females with post-secondary qualifications	170	40.96%	185	50.00%
Males with post-secondary qualifications	245	59.04%	185	50.00%

Source: Statistics Canada 1996 & 2001 Census (numbers may not add up due to rounding)

Labour Force

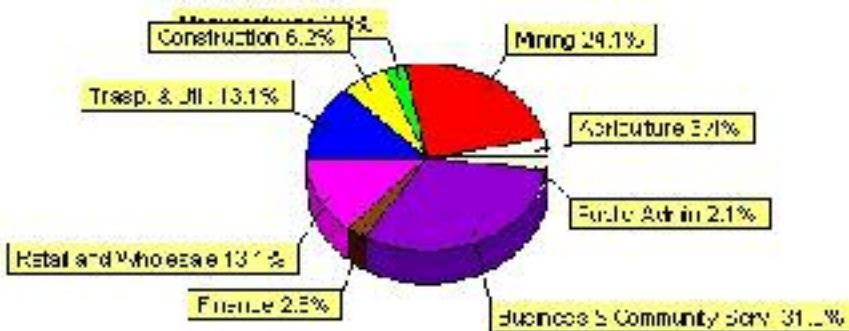
Labour force by activity	1996	2001
In the labour force, both sexes	705	740
Not in the labour force, both sexes	310	315
Total population 15 and over	1,015	1,055
Employed, both sexes	645	645
Unemployed, both sexes	60	95
Participation rate, both sexes	70.00%	70.00%
Unemployment rate, both sexes	8.00%	13.00%

Source: Statistics Canada 1996 & 2001 Census (numbers may not add up due to rounding)

Labour Force by Industry Division	1996	% of total	2001	% of total
Agriculture	20	2.88%	25	3.45%
Mining	155	22.30%	175	24.14%
Manufacturing	35	5.04%	20	2.76%
Construction	35	5.04%	45	6.21%
Transportation. & Utilities	45	6.47%	95	13.10%
Retail and Wholesale	100	14.39%	95	13.10%
Finance	0	0.00%	20	2.76%
Business & Community Services	240	34.53%	225	31.03%
Public Administration	0	0.00%	15	2.07%
Total All Industries	695	100.00%	725	100.00%

Source: Statistics Canada 1996 & 2001 Census (numbers may not add up due to rounding)

Elk Point Labour Force By Industry - 2001



Labour Force by Major Occupational Groups	1996	%	2001	%
Management occupations	60	8.76%	80	11.03%
Business, Finances and administrative occupations	115	16.79%	85	11.72%
Natural and applied sciences and related occupations	10	1.46%	15	2.07%
Health occupations	40	5.84%	40	5.52%
Occupations in social science; education; government and religion	65	9.49%	30	4.14%
Occupations in art; culture; recreation and sport	20	2.92%	10	1.38%

Sales and service occupations	165	24.09%	160	22.07%
Trades; transport; equipment operators and related occupations	55	8.03%	170	23.45%
Occupations unique to primary industry	70	10.22%	90	12.41%
Occupations unique to processing; manufacturing and utilities	95	13.87%	60	8.28%
Occupations not elsewhere classified	10	1.46%	15	2.07%
Total - All Occupations (major groups)	685	100.00%	725	100.00%
Females - All Occupations	300	43.80%	320	44.14%
Males - All Occupations	385	56.20%	405	55.86%

Source: Statistics Canada 1996 & 2001 Census (numbers may not add up due to rounding)

Income

Family Income (Number of Families)	1996	%	2001	%
less than \$19,999	45	15.25%	50	16.39%
\$20,000 - \$39,999	75	25.42%	65	21.31%
\$40,000 - \$59,999	80	27.12%	110	36.07%
\$60,000 and over	95	32.20%	100	32.79%
Total number of families	295	100.00%	325	106.56%
Average family income	\$52,920		\$57,327	
Median family income	\$49,003		\$47,501	

Source: Statistics Canada 1996 & 2001 Census (numbers may not add up due to rounding)

Household Income (Number of Households)	1996	%	2001	%
less than \$19,999	195	35.45%	180	31.03%
\$20,000 - \$39,999	125	22.73%	115	19.83%
\$40,000 - \$59,999	100	18.18%	160	27.59%
\$60,000 and over	25	4.55%	120	20.69%
Total number of households	550	100.00%	580	100.00%
Average household income	\$40,948		\$45,544	
Median household income	\$34,500		\$38,317	

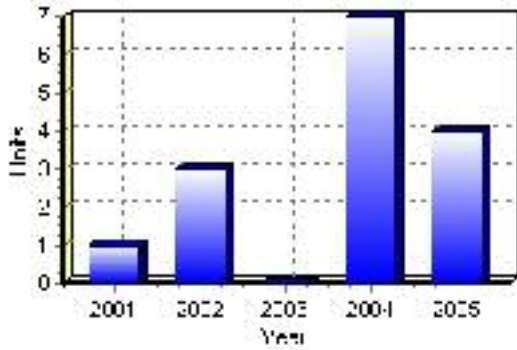
Source: Statistics Canada 1996 & 2001 Census (numbers may not add up due to rounding)

Building Permits

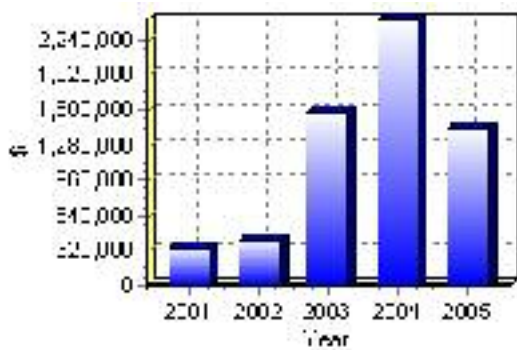
Total Building Permit Values	2001	2002	2003	2004	2005
Building Permits Value, Commercial	\$12,000	\$20,000	\$1,530,000	\$940,000	\$10,000
Building Permits Value, Industrial	\$200,000	\$125,000	\$0	\$390,000	\$200,000
Building Permits Value, Institutional	\$0	\$0	\$0	\$85,000	\$400,000
Building Permits Value, Residential	\$131,000	\$266,000	\$48,000	\$1,002,000	\$818,000
Building Permits Value, Total	\$343,000	\$411,000	\$1,578,000	\$2,417,000	\$1,428,000
Total Housing Starts	1	3	0	7	4

Source: Statistics Canada 2000-2004 Building Permits (numbers may not add up due to rounding)

Total Housing Starts



Value of Building Permits



Dwellings

Occupied Private Dwellings by Type	1996	% of total	2001	% of total
Apartments	90	16.36%	120	20.51%
Detached Duplexes	0	0.00%	0	0.00%
Movable Dwellings	20	3.64%	10	1.71%
Other single attached house	0	0.00%	0	0.00%
Row and semi-detached house	0	0.00%	0	0.00%
Single-detached house	440	80.00%	440	75.21%
Total number of occupied private dwellings	550	100.00%	585	100.00%
Private dwellings, owned	360	65.45%	375	64.10%
Private Dwellings, rented	190	34.55%	205	35.04%

Source: Statistics Canada 1996 & 2001 Census (numbers may not add up due to rounding)

Private Dwellings by Period of Construction	# of Dwellings	% of total
Period of construction, before 1946	65	11.21%
Period of construction, 1946 - 1960	70	12.07%
Period of construction, 1961 - 1970	60	10.34%
Period of construction, 1971 - 1980	155	26.72%
Period of construction, 1981 - 1990	170	29.31%
Period of construction, 1991 - 2001	60	10.34%
Total number of private dwellings constructed	580	100.00%

Source: Statistics Canada 2001 Census (numbers may not add up due to rounding)

Disclaimer: Information in this profile has been provided from a variety of external sources. Although every effort has been made to ensure the accuracy, currency and reliability of the content and data, AlbertaFirst.com Ltd. accepts no responsibility in this regard.

© AlbertaFirst.com Ltd., 2006.