

Empress

Key Contacts for Business Development

Provincial:

Honourable Shirley McClellan
Member of the Legislative Assembly (MLA)
#224 Legislature Building
10800 - 97 Avenue
Edmonton AB T5K 2B6

Tel: 780-427-8809
Fax: 780-428-1341

Constituency Office:
Box 1386
119 - 2nd Avenue West
Hanna AB T0J 1P0

Tel: 403-854-4333
Fax: 403-854-2812

Federal:

Kevin Sorenson
Member of Parliament (MP)
Crowfoot Constituency
House of Commons
Ottawa, Ontario K1A 0A6

Tel: 613-947-4608
Fax: 613-947-4611

Constituency Office:
4945 - 50th Street
Camrose, Alberta T4V 1P9

Tel: 780-608-4600
Toll Free: 1-800-665-4358
Fax: 780-608-4603

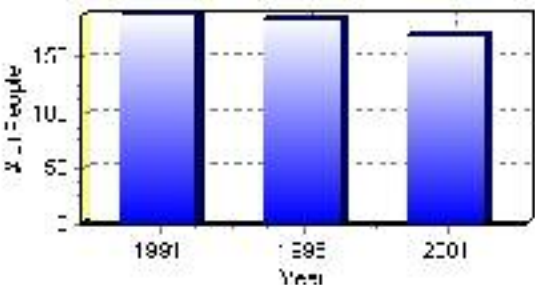
Population

Total Population

Population 2004*	171
Population 2003*	171
Population 2002*	171
Population 2001**	170
Population 2000*	186
Population 1996**	186
Population 1991**	189
Population % change 1991-1996	-1.61%
Population % change 1996-2001	-8.77%

* Source: Official Population List, Alberta Municipal Affairs
** Source: Statistics Canada 1991, 1996, & 2001 Census

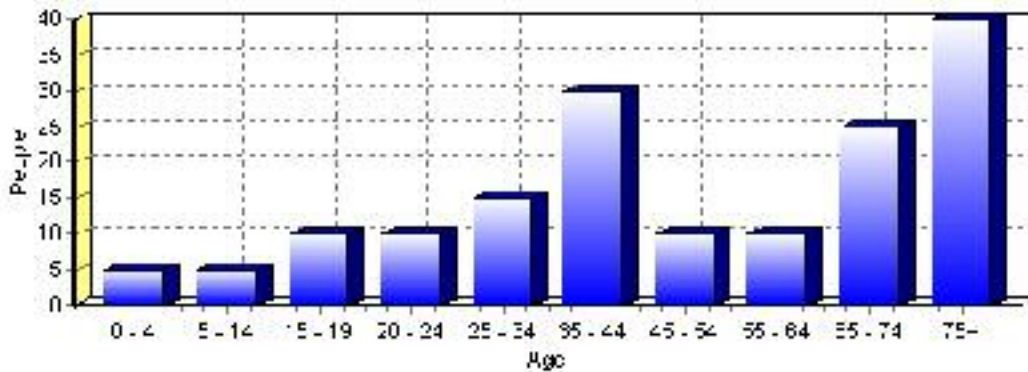
Total Population 1991-2001



Population by Age and Gender	1996 Male	1996 Female	1996 Total	2001 Male	2001 Female	2001 Total
Age 0 - 4	5	5	10	5	0	5
Age 5 - 14	15	5	20	5	0	5
Age 15 - 19	10	10	20	5	5	10
Age 20 - 24	5	0	5	5	5	10
Age 25 - 34	10	5	15	5	10	15
Age 35 - 44	15	20	35	15	15	30
Age 45 - 54	5	10	15	0	10	10
Age 55 - 64	15	5	20	5	5	10
Age 65 - 74	15	20	35	10	15	25
Age 75 and older	10	15	25	20	20	40
Total All Persons	95	90	185	85	85	170

Source: Statistics Canada 1996 & 2001 Census (numbers may not add up due to rounding)

Empress Population by Age Group (2001)

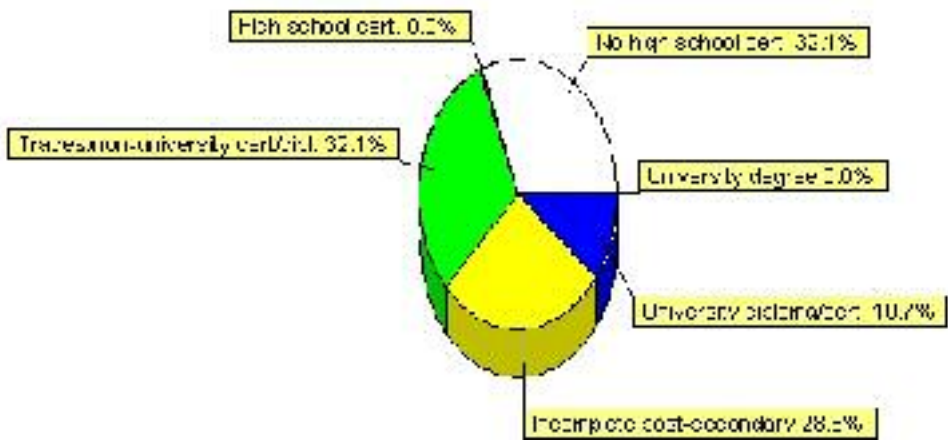


Education Statistics

Highest level of schooling for Population 20yrs and older	2001	%
People without high school certificates	45	32.14%
People with high school certificates	0	0.00%
People with trades or non-university certificate or diploma	45	32.14%
People with post-secondary education (not completed)	40	28.57%
People with university diploma/certificate	15	10.71%
People with university degree	0	0.00%
Total Population 20 years and older	140	100.00%

Source: Statistics Canada 2001 Census (numbers may not add up due to rounding)

Empress Highest Level of Schooling 2001



Population with Post Secondary Qualifications	1996	%	2001	%
Agriculture and biological sciences	10	33.33%	0	0.00%
Commerce, management and business administration	0	0.00%	0	0.00%
Educational, recreational and counseling services	0	0.00%	10	20.00%
Engineering and applied science tech. and trades	10	33.33%	30	60.00%
Engineering and applied sciences	0	0.00%	0	0.00%
Fine and applied arts	0	0.00%	10	20.00%
Health professionals, science and technologies	10	33.33%	0	0.00%
Humanities and related fields	0	0.00%	0	0.00%
Mathematics and physical sciences	0	0.00%	0	0.00%
Social sciences and related fields	0	0.00%	0	0.00%
Other and/or no specialization	0	0.00%	0	0.00%
Total people with post secondary qualifications	30	100.00%	50	100.00%
Females with post-secondary qualifications	10	33.33%	25	50.00%
Males with post-secondary qualifications	20	66.67%	25	50.00%

Source: Statistics Canada 1996 & 2001 Census (numbers may not add up due to rounding)

Labour Force

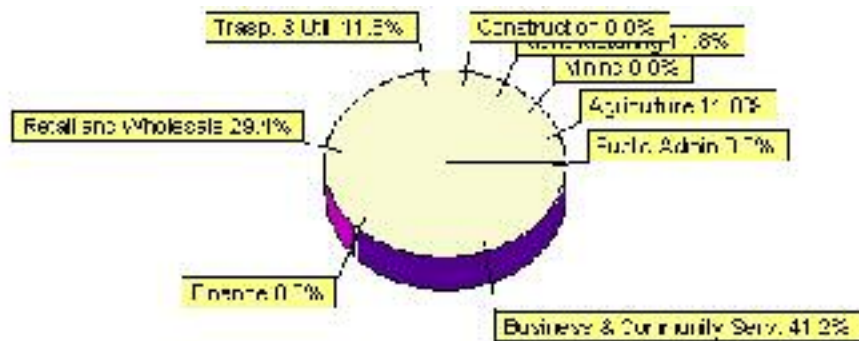
Labour force by activity	1996	2001
In the labour force, both sexes	105	85
Not in the labour force, both sexes	60	55
Total population 15 and over	160	140
Employed, both sexes	100	85
Unemployed, both sexes	10	10
Participation rate, both sexes	66.00%	61.00%
Unemployment rate, both sexes	9.00%	12.00%

Source: Statistics Canada 1996 & 2001 Census (numbers may not add up due to rounding)

Labour Force by Industry Division	1996	% of total	2001	% of total
Agriculture	30	30.00%	10	11.76%
Mining	0	0.00%	0	0.00%
Manufacturing	0	0.00%	10	11.76%
Construction	0	0.00%	0	0.00%
Transportation. & Utilities	10	10.00%	10	11.76%
Retail and Wholesale	20	20.00%	25	29.41%
Finance	0	0.00%	0	0.00%
Business & Community Services	30	30.00%	35	41.18%
Public Administration	10	10.00%	0	0.00%
Total All Industries	100	100.00%	85	100.00%

Source: Statistics Canada 1996 & 2001 Census (numbers may not add up due to rounding)

Empress Labour Force By Industry - 2001



Labour Force by Major Occupational Groups	1996	%	2001	%
Management occupations	10	10.00%	0	0.00%
Business, Finances and administrative occupations	10	10.00%	10	11.76%
Natural and applied sciences and related occupations	0	0.00%	0	0.00%
Health occupations	0	0.00%	0	0.00%
Occupations in social science; education; government and religion	10	10.00%	10	11.76%
Occupations in art; culture; recreation and sport	0	0.00%	0	0.00%

Sales and service occupations	15	15.00%	15	17.65%
Trades; transport; equipment operators and related occupations	15	15.00%	25	29.41%
Occupations unique to primary industry	30	30.00%	10	11.76%
Occupations unique to processing; manufacturing and utilities	0	0.00%	0	0.00%
Occupations not elsewhere classified	0	0.00%	0	0.00%
Total - All Occupations (major groups)	100	100.00%	85	100.00%
Females - All Occupations	40	40.00%	45	52.94%
Males - All Occupations	60	60.00%	45	52.94%

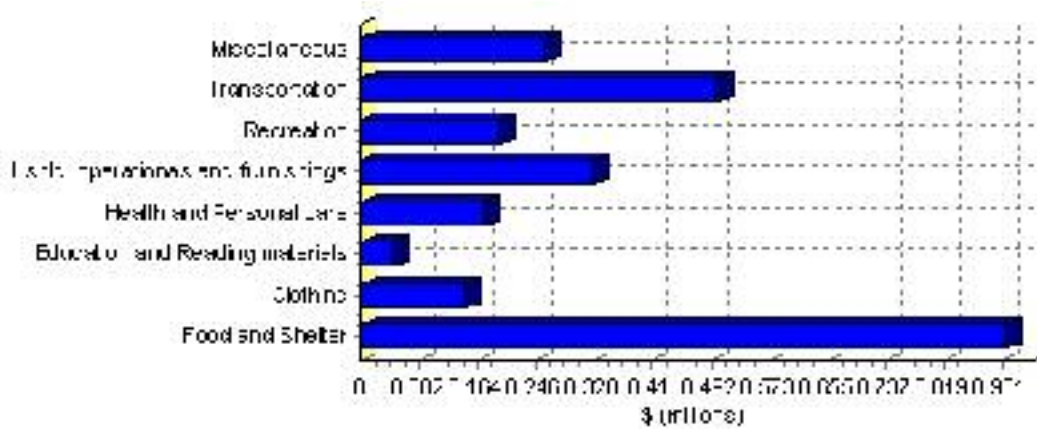
Source: Statistics Canada 1996 & 2001 Census (numbers may not add up due to rounding)

Family Expenditure

Expenditure Category	1992	% of total	1996	% of total
Food and Shelter	\$0	0.00%	\$906,609	35.58%
Clothing	\$0	0.00%	\$145,812	5.72%
Education and Reading materials	\$0	0.00%	\$45,225	1.77%
Health and Personal care	\$0	0.00%	\$171,007	6.71%
Hshld. operations and furnishings	\$0	0.00%	\$325,236	12.76%
Recreation	\$0	0.00%	\$195,430	7.67%
Transportation	\$0	0.00%	\$501,013	19.66%
Miscellaneous	\$0	0.00%	\$257,861	10.12%
Total Current Consumption	\$0	0.00%	\$2,548,193	100.00%
Total # of Households	0		85	
Average Consumption per Household	\$0		\$29,979	

Source: Statistics Canada Family Expenditure Survey 1992 & 1996 (numbers may not add up due to rounding).

Empress Family Expenditures (1996)



Dwellings

Occupied Private Dwellings by Type	1996	% of total	2001	% of total
Apartments	0	0.00%	0	0.00%
Detached Duplexes	0	0.00%	5	5.88%
Movable Dwellings	0	0.00%	5	5.88%
Other single attached house	0	0.00%	0	0.00%
Row and semi-detached house	0	0.00%	0	0.00%
Single-detached house	85	100.00%	70	82.35%
Total number of occupied private dwellings	85	100.00%	85	100.00%
Private dwellings, owned	70	82.35%	70	82.35%
Private Dwellings, rented	15	17.65%	10	11.76%

Source: Statistics Canada 1996 & 2001 Census (numbers may not add up due to rounding)

Private Dwellings by Period of Construction	# of Dwellings	% of total
Period of construction, before 1946	50	58.82%
Period of construction, 1946 - 1960	10	11.76%
Period of construction, 1961 - 1970	15	17.65%
Period of construction, 1971 - 1980	10	11.76%
Period of construction, 1981 - 1990	0	0.00%
Period of construction, 1991 - 2001	0	0.00%
Total number of private dwellings constructed	85	100.00%

Source: Statistics Canada 2001 Census (numbers may not add up due to rounding)

Disclaimer: Information in this profile has been provided from a variety of external sources. Although every effort has been made to ensure the accuracy, currency and reliability of the content and data, AlbertaFirst.com Ltd. accepts no responsibility in this regard.

© AlbertaFirst.com Ltd., 2006.