

Saddle Hills County

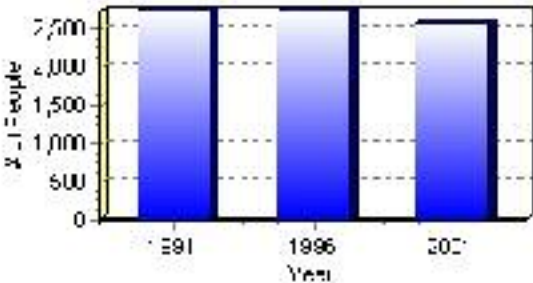
Population

Total Population

Population 2004*	2,566
Population 2003*	2,566
Population 2002*	2,566
Population 2001**	2,565
Population 2000*	2,724
Population 1996**	2,724
Population 1991**	2,722
Population % change 1991-1996	0.07%
Population % change 1996-2001	-6.16%

* Source: Official Population List, Alberta Municipal Affairs
** Source: Statistics Canada 1991, 1996, & 2001 Census

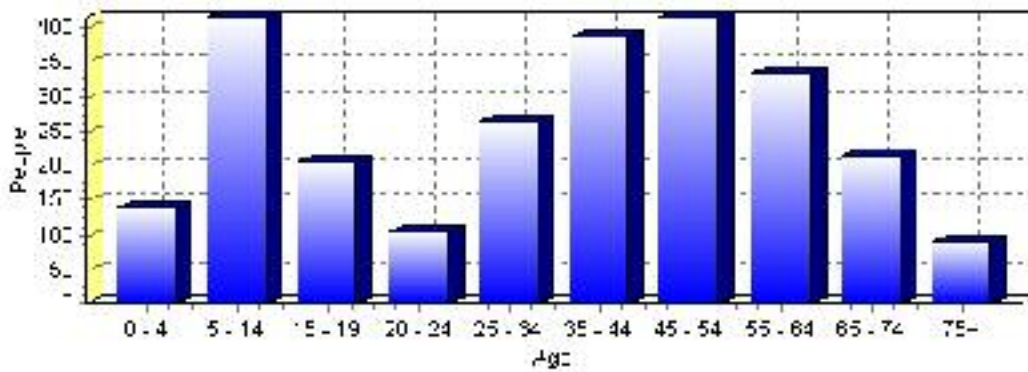
Total Population 1991-2001



Population by Age and Gender	1996 Male	1996 Female	1996 Total	2001 Male	2001 Female	2001 Total
Age 0 - 4	95	75	170	60	80	140
Age 5 - 14	275	220	495	205	210	415
Age 15 - 19	115	110	225	120	85	205
Age 20 - 24	85	55	140	60	45	105
Age 25 - 34	160	150	310	130	135	265
Age 35 - 44	230	205	435	200	185	385
Age 45 - 54	180	180	360	200	215	415
Age 55 - 64	190	145	335	185	150	335
Age 65 - 74	125	60	185	130	85	215
Age 75 and older	35	35	70	60	30	90
Total All Persons	1,490	1,240	2,730	1,345	1,220	2,565

Source: Statistics Canada 1996 & 2001 Census (numbers may not add up due to rounding)

Saddle Hills County Population by Age Group (2001)

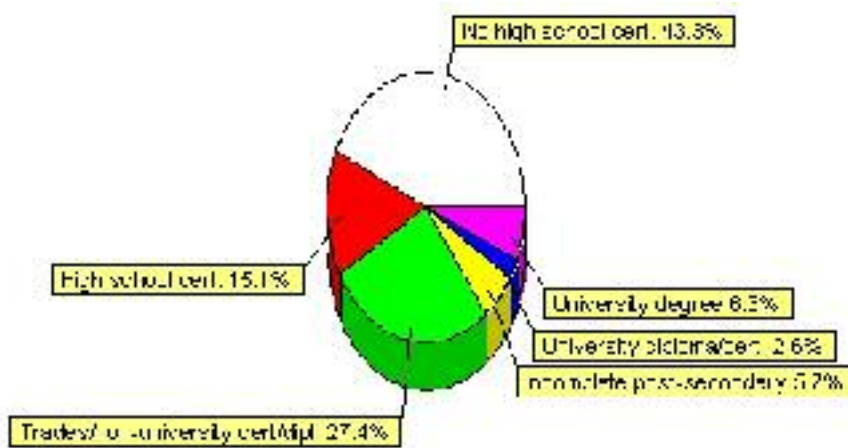


Education Statistics

Highest level of schooling for Population 20yrs and older	2001	%
People without high school certificates	760	43.30%
People with high school certificates	265	15.10%
People with trades or non-university certificate or diploma	480	27.35%
People with post-secondary education (not completed)	100	5.70%
People with university diploma/certificate	45	2.56%
People with university degree	110	6.27%
Total Population 20 years and older	1,755	100.00%

Source: Statistics Canada 2001 Census (numbers may not add up due to rounding)

Saddle Hills County Highest Level of Schooling 2001



Population with Post Secondary Qualifications	1996	%	2001	%
Agriculture and biological sciences	65	13.27%	95	14.50%
Commerce, management and business administration	95	19.39%	80	12.21%
Educational, recreational and counseling services	65	13.27%	120	18.32%
Engineering and applied science tech. and trades	145	29.59%	185	28.24%
Engineering and applied sciences	10	2.04%	10	1.53%
Fine and applied arts	0	0.00%	30	4.58%
Health professionals, science and technologies	60	12.24%	65	9.92%
Humanities and related fields	25	5.10%	60	9.16%
Mathematics and physical sciences	0	0.00%	0	0.00%
Social sciences and related fields	20	4.08%	10	1.53%
Other and/or no specialization	0	0.00%	0	0.00%
Total people with post secondary qualifications	490	100.00%	655	100.00%
Females with post-secondary qualifications	260	53.06%	300	45.80%
Males with post-secondary qualifications	230	46.94%	355	54.20%

Source: Statistics Canada 1996 & 2001 Census (numbers may not add up due to rounding)

Income

Family Income (Number of Families)	1996	%	2001	%
less than \$19,999	85	11.72%	50	7.63%
\$20,000 - \$39,999	245	33.79%	230	35.11%
\$40,000 - \$59,999	240	33.10%	150	22.90%
\$60,000 and over	155	21.38%	205	31.30%
Total number of families	725	100.00%	635	96.95%
Average family income	\$66,204		\$57,379	
Median family income	\$41,454		\$48,652	

Source: Statistics Canada 1996 & 2001 Census (numbers may not add up due to rounding)

Household Income (Number of Households)	1996	%	2001	%
less than \$19,999	225	24.06%	165	17.55%
\$20,000 - \$39,999	285	30.48%	280	29.79%
\$40,000 - \$59,999	260	27.81%	185	19.68%
\$60,000 and over	50	5.35%	310	32.98%
Total number of households	935	100.00%	940	100.00%
Average household income	\$55,932		\$49,833	
Median household income	\$37,471		\$42,071	

Source: Statistics Canada 1996 & 2001 Census (numbers may not add up due to rounding)

Dwellings

Occupied Private Dwellings by Type	1996	% of total	2001	% of total
Apartments	0	0.00%	0	0.00%
Detached Duplexes	0	0.00%	0	0.00%
Movable Dwellings	200	21.39%	160	16.93%
Other single attached house	15	1.60%	5	0.53%
Row and semi-detached house	0	0.00%	0	0.00%
Single-detached house	720	77.01%	780	82.54%
Total number of occupied private dwellings	935	100.00%	945	100.00%
Private dwellings, owned	870	93.05%	865	91.53%
Private Dwellings, rented	65	6.95%	75	7.94%

Source: Statistics Canada 1996 & 2001 Census (numbers may not add up due to rounding)

Private Dwellings by Period of Construction	# of Dwellings	% of total
Period of construction, before 1946	50	5.29%
Period of construction, 1946 - 1960	90	9.52%
Period of construction, 1961 - 1970	110	11.64%
Period of construction, 1971 - 1980	305	32.28%
Period of construction, 1981 - 1990	170	17.99%
Period of construction, 1991 - 2001	220	23.28%
Total number of private dwellings constructed	945	100.00%

Source: Statistics Canada 2001 Census (numbers may not add up due to rounding)

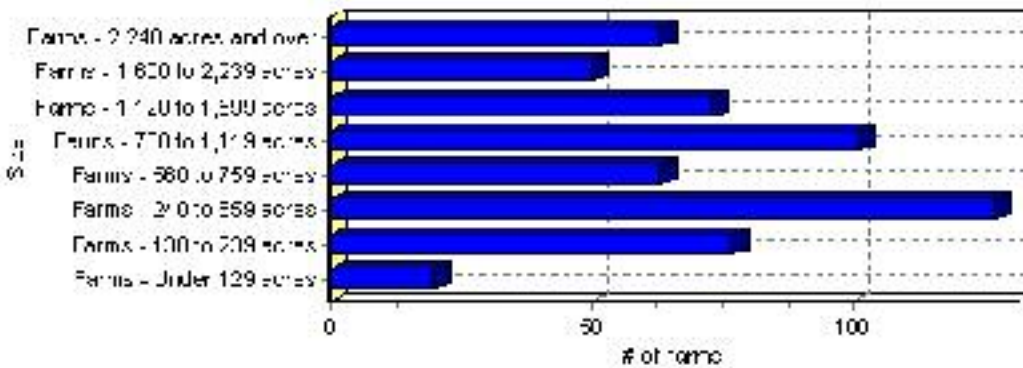
Farming

Saddle Hills County Total Farm Area : 575 acres

Farms by Total Farm Area (2001)	# of Farms	% of total
Farms - Under 129 acres	20	3.48%
Farms - 130 to 239 acres	77	13.41%
Farms - 240 to 559 acres	127	22.13%
Farms - 560 to 759 acres	63	10.98%
Farms - 760 to 1,119 acres	101	17.60%
Farms - 1,120 to 1,599 acres	73	12.72%
Farms - 1,600 to 2,239 acres	50	8.71%
Farms - 2,240 acres and over	63	10.98%
Total number of farms reporting	574	100.00%

Source: Statistics Canada 2001 Census of Agriculture(numbers may not add up due to rounding)

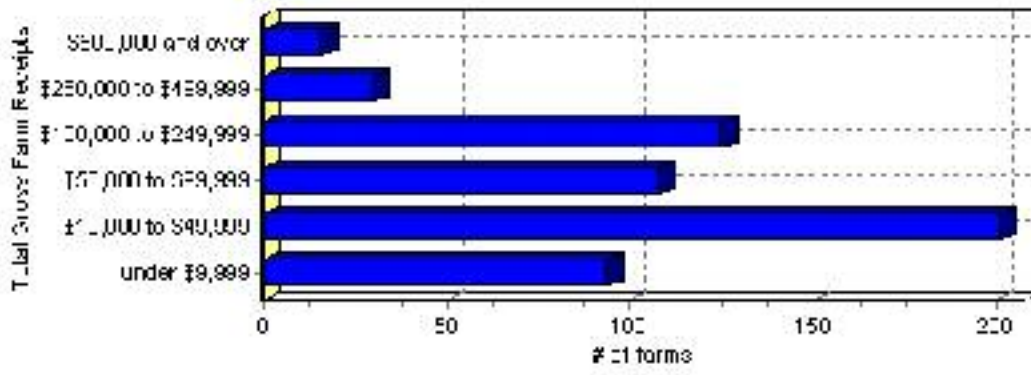
of Farms by Total Farm Area



Farms by Total Gross Farm Receipts - 2001	# of Farms	% of total
Farms gross farm receipts - under \$9,999	94	16.38%
Farms gross farm receipts - \$10,000 to \$49,999	201	35.02%
Farms gross farm receipts - \$50,000 to \$99,999	108	18.82%
Farms gross farm receipts - \$100,000 to \$249,999	125	21.78%
Farms gross farm receipts - \$250,000 to \$499,999	30	5.23%
Farms gross farm receipts - \$500,000 and over	16	2.79%
Total number of farms reporting	574	100.00%

Source: Statistics Canada 2001 Census of Agriculture(numbers may not add up due to rounding)

Total Gross Farm Receipts

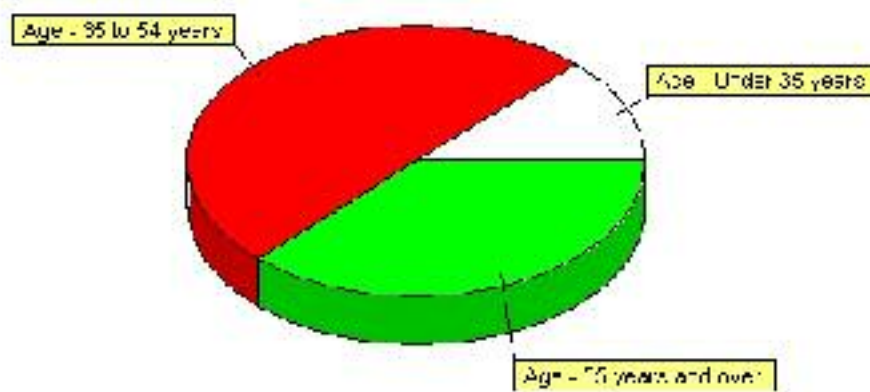


Farming, Continued

Characteristics of Farm Operators	#	%
Age - Under 35 years	105	12.57%
Age - 35 to 54 years	420	50.30%
Age - 55 years and over	310	37.13%
Average age of operators	50	
Number of operators - Female	255	30.54%
Number of operators - Male	575	68.86%
Total number of operators reporting	835	100.00%

Source: Statistics Canada 2001 Census of Agriculture(numbers may not add up due to rounding)

Age of Farm Operators



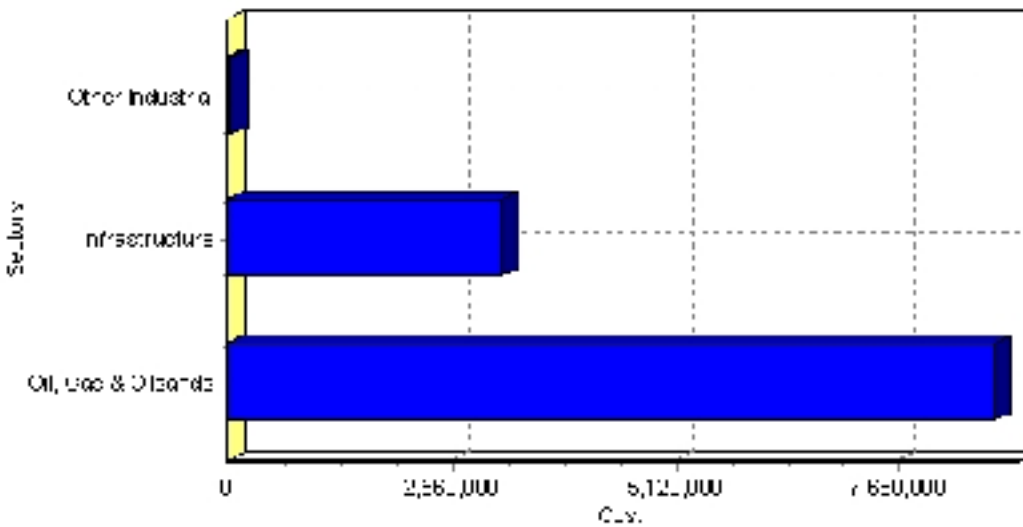
Projects

Summary of Projects in Saddle Hills County as of September 2006

Project Sector	Number of Projects	Project Cost
Oil, Gas & Oilsands	7	\$8,772,000
Infrastructure	4	\$3,143,410
Other Industrial	1	\$50,000
Total	12	\$11,965,410

This inventory lists projects in Alberta that have recently been completed, are under construction, or are proposed to start construction. Not all projects are listed due to reasons of confidentiality and/or due to information not being available at the time of printing. Project data is obtained from public information sources, where possible, this data has been verified with the project proponent/developer, users of the Inventory may wish to confirm project data with the proponent/developer. The inventory does not breakdown project expenditures by any given year. The cost of a project is the value of expenditures expected over all phases of project construction, which may span over two or more years. Cost of projects listed in the Inventory are estimated values only. Source: Alberta Economic Development, 2004.

Value of Projects by Sector (as of September 2006)



Project Status	Number of Projects	Project Cost
Completed	6	\$5,446,280
Under Construction	6	\$6,519,130
Total	12	\$11,965,410

This inventory lists projects in Alberta that have recently been completed, are under construction, or are proposed to start construction. Not all projects are listed due to reasons of confidentiality and/or due to information not being available at the time of printing. Project data is obtained from public information sources, where possible, this data has been verified with the project proponent/developer, users of the Inventory may wish to confirm project data with the proponent/developer. The inventory does not breakdown project expenditures by any given year. The cost of a project is the value of expenditures expected over all phases of project construction, which may span over two or more years. Cost of projects listed in the Inventory are estimated values only. Source: Alberta Economic Development, 2004.

Largest Projects in Saddle Hills County as of September 2006

Company Name	Project Description	Project Location	Project Cost	Construction Schedule	Status
Saddle Hills County	Regrading of Twp 822 from Rr 103 to Rr93	Saddle Hills County	\$1,895,700	2006-2006	Under Construction
Talisman Energy Inc.	COMPRESSOR	Saddle Hills County	\$1,800,000	2006-2006	Under Construction
Husky Oil	COMPRESSOR STATION	Saddle Hills County	\$1,700,000	2006-2006	Under Construction
Bear Ridge Resources	COMPRESSOR	Saddle Hills County	\$1,500,000	2006-2006	Completed
Birchcliffe Energy	COMPRESSOR	Saddle Hills County	\$1,400,000	2006-2006	Completed
Saddle Hills County	Grading - RR #131	Saddle Hills County	\$951,380	2006-2006	Under Construction
Kereco Energy	COMPRESSOR	Saddle Hills County	\$900,000	2006-2006	Completed
Bear Ridge Resources	COMPRESSOR STATION	Saddle Hills County	\$800,000	2006-2006	Completed
ARC Resources Ltd.	COMPRESSOR	Saddle Hills County	\$672,000	2006-2006	Completed
Saddle Hills County	BRIDGE RECONSTRUCTION - RR102	Saddle Hills County	\$174,280	2006-2006	Completed

Disclaimer: Information in this profile has been provided from a variety of external sources. Although every effort has been made to ensure the accuracy, currency and reliability of the content and data, AlbertaFirst.com Ltd. accepts no responsibility in this regard.

© AlbertaFirst.com Ltd., 2006.