

# Provost No. 52, M.D. of

## Welcome

Welcome to our community. We hope the information contained within this profile is useful. If additional information is required, please contact our representatives from the "Key Contacts" section.



## Area Overview

The Municipal District of Provost No. 52, located in east-central Alberta, is a thriving rural municipality surrounding the Town of Provost and villages of Amisk, Czar and Hughenden. It also encompasses the hamlets of Bodo, Cadogan, Hayter and Metiskow.

The economic base in the M.D. is primarily agriculture, oil and gas. The main service centre of the district is the Town of Provost.

The diverse geography of the M.D. attracts many wildlife enthusiasts to the district. There are a wide range of fields and streams with migrating birds, rolling hills and wooded willow stands, etc. There are also many recreation areas which provide bird-watching, boating, fishing, golfing, hunting and swimming opportunities.

There are several historical sites of interest to visitors.

The Bodo Archeological dig is one of the largest natural discoveries in North America, the dig was discovered in 1995 when oilfield activity uncovered artifacts. Located southeast of Provost, this site is unique in western Canada because so much of it has not been disturbed. While an average archeological site is about the size of a living room, the Bodo site is several kilometers across. The most common artifacts being uncovered are bison bones and pottery fragments and may be 5,000 years old.

St. Norbert's Catholic Church, built in 1922, is the largest rural Neo-Gothic church in Alberta. Widely admired for its significant architecture, it was declared an Alberta Historic Resource in 1978. The Rosenheim Historical Society has restored the structure to its original splendor and is responsible for its maintenance and preservation. Although St. Norbert's is located 9.6 km south on Highway 899 and 4.8 km. east, its elegant silver dome and spire can be seen from a great distance.



St. Norbert's Church, Rosenheim used with permission from Digiteyesed Photography [www.digiteyesed.com](http://www.digiteyesed.com)

## Community Services

### Municipal

Municipal District of Provost No. 52  
Administration Office  
4504 - 53 Ave.  
Box 300  
Provost, Alberta  
T0B 3S0  
Tel: 780-753-2434 or 780-857-2434  
Fax: 780-753-6432  
Email: [mdprovost@mdprovost.ca](mailto:mdprovost@mdprovost.ca)  
Administrator: Iris Larson  
Asst. Administrator: Judy Larson

### Public Works

East Public Works Superintendent  
Email: [mdprovost@mdprovost.ca](mailto:mdprovost@mdprovost.ca)  
Tel: 780-753-2168  
Cell: 780-753-0508

### West Public Works Superintendent

Curtis Hughes  
Email: [mdprovost@mdprovost.ca](mailto:mdprovost@mdprovost.ca)  
Tel: 780-856-3654  
Cell: 780-842-7336

### Provincial

Provincial departments such as the Hail & Crop Insurance Corporation, Energy & Natural Resources, and the Fish & Wildlife

Division have offices in the Towns of Provost or Wainwright.

## **Federal**

- [Canada Post](#)
- [Royal Canadian Mounted Police](#)

# Community Lifestyle

## **Accommodation**

### Amisk

- Amisk Hotel

### Bodo

- Wolf Willow Bed & Breakfast

### Cadogan

- Cadogan Red Lion Hotel

### Czar

- Czar Hotel

### Provost

- Deerhead Inn
- Greenhead Motel & Restaurant
- Horizon Motel
- Provost Motor Inn
- Provost Super 8 Motel

## **Restaurants**

### Amisk

- Amisk Hotel

### Czar

- Dezzie's Diner

### Provost

- A & W Provost
- Greenhead Motel & Restaurant
- Hotel Motel & Restaurant
- Provost Motor Inn
- Provost Subway Sandwiches & Salads
- Silver Sticks Restaurant
- The Bean Counter Cafe
- The Gallery Tea House

- Top 20 Restaurant

## Recreation

The M.D. of Provost is home to a wide range of natural environments, from fields and streams, to rolling hills and sandunes with wooded willow stands.

- Ribstone Creek provides some of the best bird-watching in all of Alberta
- an area south of Provost has been designated the "Johnson Blue Bird Trail"
- Shorncliffe Lake has boating and water skiing facilities
- **Capt. Ayre Lake** has some of the cleanest water in Alberta, and
- the M.D. also maintains three campsites along Highway 13.

## Community Organizations

There are many community organizations, sports clubs and service groups active in the M.D.

## Religious Services

Most religious denominations including the Alliance, Associated Gospel, Fellowship of Christian Assemblies, Lutheran, Pentecostal, Roman Catholic and the United Church of Canada are represented in the M.D.

## Attractions

The Prairie Panorama Museum and Machinerama located at Shorncliffe Lake are interesting visits.

Rosenheim Church is the largest rural Neo-Gothic church in Alberta. Built in 1911, the church is an excellent example of architectural style from southern Germany. An Alberta Historic site, the church is located 6 miles south and 3 1/2 miles east of Provost.

Discovered in 1995, the **Bodo Archaeological** site is one of the premier archaeology discoveries of Western Canada.

The Carson family of Amisk has restored a historical stone house that was occupied from 1906 - 1960. It is located 7 miles south of Amisk on highway 884 and 3/4 mile west and is open to the public during the summer months.

The M.D. is also proud to be home to several rodeo champions.



Stone house, Amisk used with permission from Edwin & Mary Carson

## Economic Base

The economic base in the M.D. is primarily oil and gas, followed by agriculture.

## Economic Facts

### Major Oil & Gas Companies

- Anadarko Canada Corporation
- Apache Canada
- Champion Technologies
- Enbridge Pipelines
- Encana Oil & Gas
- Enerplus Global
- Enterra Energy
- Gibson Petroleum
- Harvest Operations
- Husky Oil Operations
- Leachman Enterprises Ltd.
- Maverick Oilfield Services
- Ray-Patch Pipeline
- Real Resources
- Rife Resources Ltd.
- Winterhawk Enterprises (Provost) Ltd.

### Financial Institutions

- ATB Financial
- Canadian Imperial Bank of Commerce
- Common Wealth Credit Union
- ManuLife Financial
- Wainwright Credit Union

### Communications

- Newspapers - Edmonton Journal (daily), Edmonton Sun (daily), The Meredian Booster (3 issues a week), [The Provost News](#) (local weekly paper)
- Radio - Calgary, Edmonton, Lloydminster, Red Deer, Saskatoon and Wainwright.
- Television - Edmonton, Lloydminster, Red Deer or Saskatoon

## Education

The M.D. of Provost is part of the [Buffalo Trail Regional School Division #28](#), headquartered in Wainwright [Tel: 780-842-6144]

The [East Central Alberta Catholic Separate School Regional Division #16](#), headquartered in Wainwright [Tel: 780-842-3992]

### Provost Family Day Home Program

Family Day Homes are located in the Town of Provost and private childcare services are available throughout the M.D.

## **Playschool**

Ages 3-4 at Provost Public School

## **Preschool/Junior Kindergarten**

Ages 4-5 at Provost Public School and St. Thomas Aquinas School in Provost. Sunshiners Preshool is held at the Hughenden Public School.

## **Public**

Amisk School provides public school education for Grades K to 8. Czar School provides public school education for Grades K to 6. Hughenden Public School provides public school education for Grades K to 12. Provost Public School provides public school education for Grades K to 12.

## **Separate**

St. Thomas Aquinas School in the Town of Provost provides separate school education for Grades K to 12.

## **Provost Outreach School**

provides education for Grades 7 to 12, to assist students who cannot learn in a traditional school setting.

# **Emergency Services**

## **ALL EMERGENCIES CALL - 9-1-1**

### **Fire Protection**

There are volunteer fire departments located in several communities including Amisk, Czar, Hughenden and Provost, which serve the communities and their respective surrounding areas.

[Hughenden Volunteer Fire Department](#) - [Non-Emergency Tel: 780-856-2022]

[Provost Volunteer Fire Department](#) - [Non-Emergency Tel: 780-753-2529]

### **Police Services - 9-1-1**

The M.D. is served by the Provost and Killam detachment of the Royal Canadian Mounted Police [RCMP]. Provost Detachment [Tel: 780-753-2215 or 780-753-2214] Killam Detachment [Tel: 780-385-3502 or 780-385-3509]

[Special Constable](#) [Enforcement Issues Tel: 780-753-1981]

### **Ambulance Services - 9-1-1**

[Hardisty Hospital - Information Tel: 780-888-3742]

[Provost Hospital - Information Tel: 780-753-2291]

### **Ambulance Services - 9-1-1**

Ambulance service is available throughout the M.D.

# **Health Care**

Residents in the western portion of the M.D. are served by the Hardisty Hospital, located in Hardisty, which has 5 acute care beds and 15 long-term care beds.

Residents in the eastern portion of the M.D. are served by the Provost Health Care Centre. This hospital provides emergency

services and includes 15 acute care beds and 36 continuing care beds and one respite care bed.

## Key Contacts for Business Development

### Municipal

Municipal District of Provost No. 52  
Box 300  
Provost, Alberta  
T0B 3S0  
Tel: 780-753-2434 or 780-857-2434  
Fax: 780-753-6432  
Email: [mdprovost@mdprovost.ca](mailto:mdprovost@mdprovost.ca)

Allan Murray  
Reeve

Iris Larson  
Administrator  
Email: [mdprovost@mdprovost.ca](mailto:mdprovost@mdprovost.ca)

Judy Larson  
Asst. Administrator  
Email: [mdprovost@mdprovost.ca](mailto:mdprovost@mdprovost.ca)

Leila Grobel  
Economic Development Officer  
Email: [dev\\_edc@telus.net](mailto:dev_edc@telus.net)

Ian Green  
Special Constable  
Email: [igreen@mdprovost.ca](mailto:igreen@mdprovost.ca)

### Provincial (Updated October 2005)

**Alberta Economic Development**  
Allan Walkey, Regional Manager  
[allan.walkey@gov.ab.ca](mailto:allan.walkey@gov.ab.ca)  
Dale Beddoes, Information Officer  
[dale.beddoes@gov.ab.ca](mailto:dale.beddoes@gov.ab.ca)  
5005 - 49 Avenue  
Camrose, Alberta  
T4V 1N5  
Tel: 780-679-1235  
Fax: 780-679-1250

**Doug Griffiths**  
Member of the Legislative Assembly [MLA]  
Wainwright Constituency  
634 Legislature Annex  
9718 - 107 Street  
Edmonton, Alberta  
T5K 1E4  
Tel: 780-422-5369  
Fax: 780-415-0951

Wainwright Office  
201 Royal Bank Building  
1006-4th Ave.  
Wainwright, Alberta  
T9W 2R3  
Tel: 780-842-6177  
Fax: 780-842-3171  
Email: [battleriver.wainwright@assembly.ab.ca](mailto:battleriver.wainwright@assembly.ab.ca)  
Government of Alberta

### Federal (Updated October 2005)

Leon E. Benoit  
Member of Parliament [MP]  
Vegreville - Wainwright Constituency  
Room 613 Justice Building  
House of Commons  
Ottawa, Ontario  
K1A 0A6  
Tel: 613-992-4171  
Fax: 613-996-9011  
Email: [benoit.l@parl.gc.ca](mailto:benoit.l@parl.gc.ca)  
Government of Canada

Riding Office:  
P.O. Box 300  
Mannville, Alberta  
T0B 2W0  
Tel: 780-763-6130  
Fax: 780-763-6132  
Email: [benoit1@parl.gc.ca](mailto:benoit1@parl.gc.ca)  
Government of Canada

## Location

The M.D. of Provost is **located** in east central Alberta. The eastern border of the district is on the Alberta-Saskatchewan border.

## Taxation

---

	<u>East</u>	<u>West</u>
<b>Mill Rates [2005]</b>		
Public/Separate School-Residential	4.9857	4.9857
Public/Separate School-Farmland	4.9857	4.9857
Public/Separate School-Non Residential/Industrial	6.8675	6.8675
Municipal Split 50%-Residential	2.7929	2.7929
Municipal Split 50%-Farmland	5.5859	5.5859
Municipal Split 50%-Non Residential/Industrial	5.5859	5.5859
Ambulance	0.0921	0.0921
Hillcrest Lodge	0.4257	0.4257
Waste Management	0.1071	0.1071



F.C.S.S.	0.0138	0.0138
Recreation	0.3534	0.1303
Fire	0.4436	0.2839
Special Industrial	2.2063	2.2063
<b>TOTAL</b>		
<b>RESIDENTIAL</b>	09.2143	08.8315
<b>FARMLAND</b>	12.0073	11.6245
<b>NON-RESIDENTIAL/INDUSTRIAL</b>	16.0954	15.7126
<b>** M &amp; E</b>	09.2279	08.8451

	<u>East</u>	<u>West</u>
<b>Mill Rates [2004]</b>		
Public/Separate School-Farmland	5.2805	5.2805
Public/Separate School-Non Residential/Industrial	7.1954	7.1954
Municipal Split 50%-Farmland	5.4140	5.4140
Municipal Split 50%-Non Residential/Industrial	5.4140	5.4140
Ambulance	0.1075	0.1075
Hillcrest Lodge	0.3586	0.3586
Waste Management	0.1126	0.1126
F.C.S.S.	0.0145	0.0145
Recreation	0.3065	0.1479
Fire	0.4190	0.2514
Uncollectables	0.0054	0.0054
Special Industrial	2.3279	2.3279
<b>TOTAL</b>		
<b>FARMLAND</b>	12.0186	11.6924
<b>NON-RESIDENTIAL/INDUSTRIAL</b>	16.2614	15.9352
<b>** M &amp; E</b>	09.0660	08.7398

	<u>East</u>	<u>West</u>
<b>Mill Rates [2003]</b>		
Public/Separate School-Farmland	5.4014	5.4014
Public/Separate School-Non Residential/Industrial	7.2146	7.2146
Municipal Split 50%-Farmland	5.2748	5.2748
Municipal Split 50%-Non Residential/Industrial	5.2748	5.2748
Ambulance	0.0827	0.0827
Hillcrest Lodge	0.3348	0.3348
Waste Management	0.1096	0.1096
F.C.S.S.	0.0000	0.0000
Recreation	0.4612	0.1502
Fire	0.3546	0.2504
Special Industrial	2.4290	2.4290
Uncollectables	0.0180	0.0180
<b>TOTAL</b>		

<b>FARMLAND</b>	12.0371	11.6219
<b>NON-RESIDENTIAL/INDUSTRIAL</b>	16.2793	15.8641
<b>** M &amp; E</b>	09.0647	08.6495

---

## Transportation

### Air Services

The M.D. has an airport located on the outskirts of the Town of Provost, it has a 1,524 metre [5,000 feet] runway and is the longest runway between Edmonton and Saskatoon. The nearest commercial and air freight service is at Lloydminster [125 kilometres north].

### Rail Services

The M.D. is served by Canadian Pacific Railways secondary main line. Spur trackage is available.

### Highways

The main highways running through the M.D. are Highway 13, leading west to Camrose and east to Saskatchewan, and Highway 41, leading north to Wainwright and south to Consort. Other routes include Secondary Highway 899 north and south of Provost, Secondary Highway 600 west of Provost to Highway 41, Secondary Highway 884 south of Amisk, and Secondary Highway 599 west of Highway 41 to Castor.

### Freight Carriers

Several freight carriers such as Hi-Way 9 Express, Hi-Way 13 Transport, Kindersley Transport and Provost Freight Lines serve the M.D.

### Couriers

Canpar Transport, DHL Express, Don Armour, Purolator Courier and Relay Distributors.

### Bus Services

Greyhound Bus Lines provides scheduled inter-community service to the M.D.

### Local Senior Citizens Transportation

The Provost Lion's Handi-Van is transportation for seniors and handicapped persons residing within the Town of Provost and Provost municipality.

## Utilities

### Power

**EPCOR** (Account Activation) 310-4300

**Fortis Alberta Inc.** (Power Outages/Customer Service) 310-9473

### Natural Gas

Natural Gas Co-Op 52 Ltd.  
 4615 - 57 Avenue (Highway 13)  
 Box 177  
 Provost, Alberta T0B 3S0  
 Tel: 780-753-2777  
 Fax: 780-753-6006

E-mail: [natgas52@telusplanet.net](mailto:natgas52@telusplanet.net)

### **Telephone**

Telus Communications Inc.

Residential Customers 310-2255

Business Customers 310-3100

Credit/Collections 310-2500

Repair Service 611

Internet for Residence 310-4638

Internet Technical Support 310-8324

Telus Mobility 1-866-558-2273

### **Water Supply**

Private wells are the source of water in most of the M.D. The Town and Villages provide their own water and sewer systems. The M.D. provides water and sewer services in the hamlets of Cadogan and Metiskow and only sewer in Hayter.

### **Waste Management**

Solid waste management is administered by the M.D. #52 Waste Management Authority.

The M.D. of Provost promotes recycling at its landfill and transfer sites.

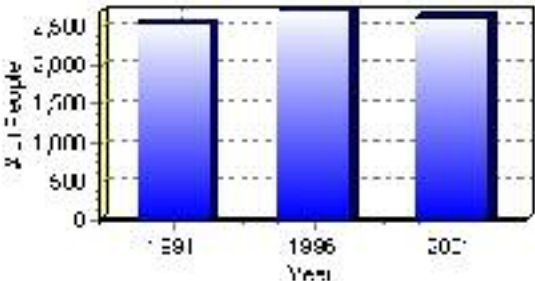
# Population

## Total Population

Population 2004*	2,635
Population 2003*	2,635
Population 2002*	2,635
Population 2001**	2,635
Population 2000*	2,705
Population 1996**	2,705
Population 1991**	2,536
Population % change 1991-1996	6.25%
Population % change 1996-2001	-2.66%

\* Source: Official Population List, Alberta Municipal Affairs  
\*\* Source: Statistics Canada 1991, 1996, & 2001 Census

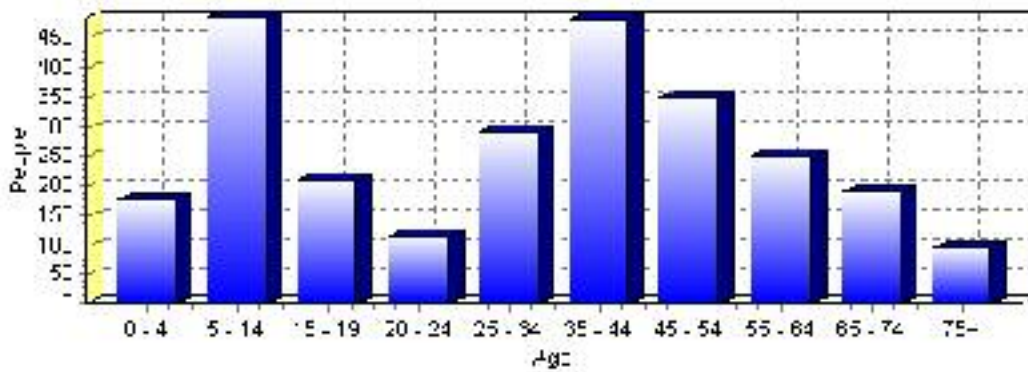
## Total Population 1991-2001



Population by Age and Gender	1996 Male	1996 Female	1996 Total	2001 Male	2001 Female	2001 Total
Age 0 - 4	120	130	250	90	85	175
Age 5 - 14	240	220	460	260	225	485
Age 15 - 19	110	105	215	110	100	210
Age 20 - 24	105	70	175	65	50	115
Age 25 - 34	220	195	415	130	160	290
Age 35 - 44	225	190	415	255	225	480
Age 45 - 54	155	130	285	190	160	350
Age 55 - 64	120	115	235	130	120	250
Age 65 - 74	105	75	180	105	85	190
Age 75 and older	50	40	90	50	45	95
Total All Persons	1,440	1,260	2,700	1,390	1,245	2,635

Source: Statistics Canada 1996 & 2001 Census (numbers may not add up due to rounding)

### Provost No. 52, M.D. of Population by Age Group (2001)

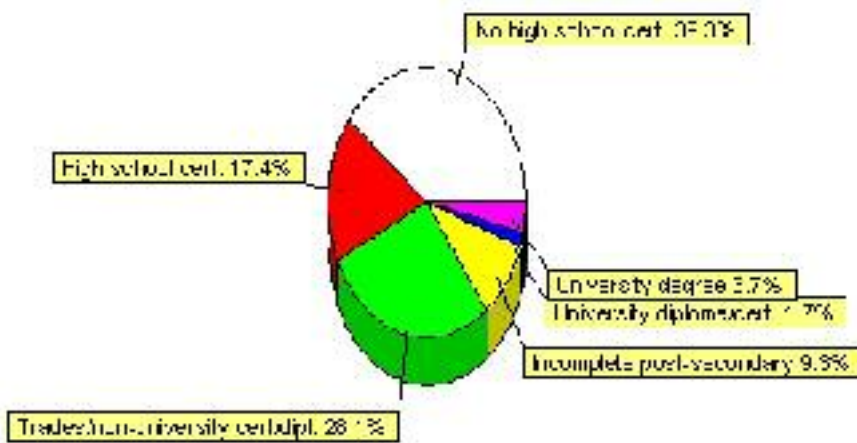


# Education Statistics

Highest level of schooling for Population 20yrs and older	2001	%
People without high school certificates	700	39.33%
People with high school certificates	310	17.42%
People with trades or non-university certificate or diploma	500	28.09%
People with post-secondary education (not completed)	165	9.27%
People with university diploma/certificate	30	1.69%
People with university degree	65	3.65%
Total Population 20 years and older	1,780	100.00%

Source: Statistics Canada 2001 Census (numbers may not add up due to rounding)

## Provost No. 52, M.D. of Highest Level of Schooling 2001



Population with Post Secondary Qualifications	1996	%	2001	%
Agriculture and biological sciences	70	11.86%	80	13.33%
Commerce, management and business administration	100	16.95%	150	25.00%
Educational, recreational and counseling services	45	7.63%	80	13.33%
Engineering and applied science tech. and trades	215	36.44%	145	24.17%
Engineering and applied sciences	10	1.69%	0	0.00%
Fine and applied arts	30	5.08%	30	5.00%
Health professionals, science and technologies	85	14.41%	90	15.00%
Humanities and related fields	20	3.39%	0	0.00%
Mathematics and physical sciences	20	3.39%	10	1.67%
Social sciences and related fields	10	1.69%	15	2.50%
Other and/or no specialization	0	0.00%	0	0.00%
Total people with post secondary qualifications	590	100.00%	600	100.00%
Females with post-secondary qualifications	310	52.54%	345	57.50%
Males with post-secondary qualifications	280	47.46%	255	42.50%

Source: Statistics Canada 1996 & 2001 Census (numbers may not add up due to rounding)

## Labour Force

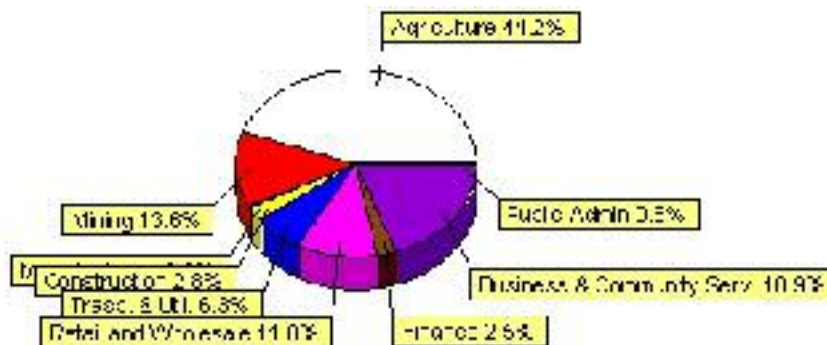
Labour force by activity	1996	2001
In the labour force, both sexes	1,630	1,585
Not in the labour force, both sexes	340	395
Total population 15 and over	1,975	1,980
Employed, both sexes	1,595	1,550
Unemployed, both sexes	35	35
Participation rate, both sexes	82.00%	80.00%
Unemployment rate, both sexes	2.00%	2.00%

Source: Statistics Canada 1996 & 2001 Census (numbers may not add up due to rounding)

Labour Force by Industry Division	1996	% of total	2001	% of total
Agriculture	710	43.83%	700	44.16%
Mining	205	12.65%	215	13.56%
Manufacturing	15	0.93%	0	0.00%
Construction	85	5.25%	45	2.84%
Transportation. & Utilities	75	4.63%	100	6.31%
Retail and Wholesale	165	10.19%	175	11.04%
Finance	45	2.78%	40	2.52%
Business & Community Services	285	17.59%	300	18.93%
Public Administration	60	3.70%	10	0.63%
Total All Industries	1,620	100.00%	1,585	100.00%

Source: Statistics Canada 1996 & 2001 Census (numbers may not add up due to rounding)

### Provost No. 52, M.D. of Labour Force By Industry - 2001



Labour Force by Major Occupational Groups	1996	%	2001	%
Management occupations	45	2.77%	100	6.33%
Business, Finances and administrative occupations	145	8.92%	205	12.97%
Natural and applied sciences and related occupations	15	0.92%	15	0.95%
Health occupations	40	2.46%	75	4.75%
Occupations in social science; education; government and religion	20	1.23%	35	2.22%
Occupations in art; culture; recreation and sport	0	0.00%	15	0.95%

Sales and service occupations	260	16.00%	155	9.81%
Trades; transport; equipment operators and related occupations	280	17.23%	205	12.97%
Occupations unique to primary industry	730	44.92%	745	47.15%
Occupations unique to processing; manufacturing and utilities	80	4.92%	35	2.22%
Occupations not elsewhere classified	0	0.00%	10	0.63%
Total - All Occupations (major groups)	1,625	100.00%	1,580	100.00%
Females - All Occupations	620	38.15%	670	42.41%
Males - All Occupations	1,005	61.85%	915	57.91%

Source: Statistics Canada 1996 & 2001 Census (numbers may not add up due to rounding)

---



## Income

<b>Family Income (Number of Families)</b>	<b>1996</b>	<b>%</b>	<b>2001</b>	<b>%</b>
less than \$19,999	75	11.36%	65	10.32%
\$20,000 - \$39,999	220	33.33%	145	23.02%
\$40,000 - \$59,999	175	26.52%	205	32.54%
\$60,000 and over	190	28.79%	200	31.75%
Total number of families	660	100.00%	615	97.62%
Average family income	\$49,082		\$63,408	
Median family income	\$44,815		\$56,208	

Source: Statistics Canada 1996 & 2001 Census (numbers may not add up due to rounding)

<b>Household Income (Number of Households)</b>	<b>1996</b>	<b>%</b>	<b>2001</b>	<b>%</b>
less than \$19,999	165	18.64%	95	10.33%
\$20,000 - \$39,999	295	33.33%	215	23.37%
\$40,000 - \$59,999	200	22.60%	265	28.80%
\$60,000 and over	50	5.65%	350	38.04%
Total number of households	885	100.00%	920	100.00%
Average household income	\$45,636		\$58,963	
Median household income	\$38,418		\$52,739	

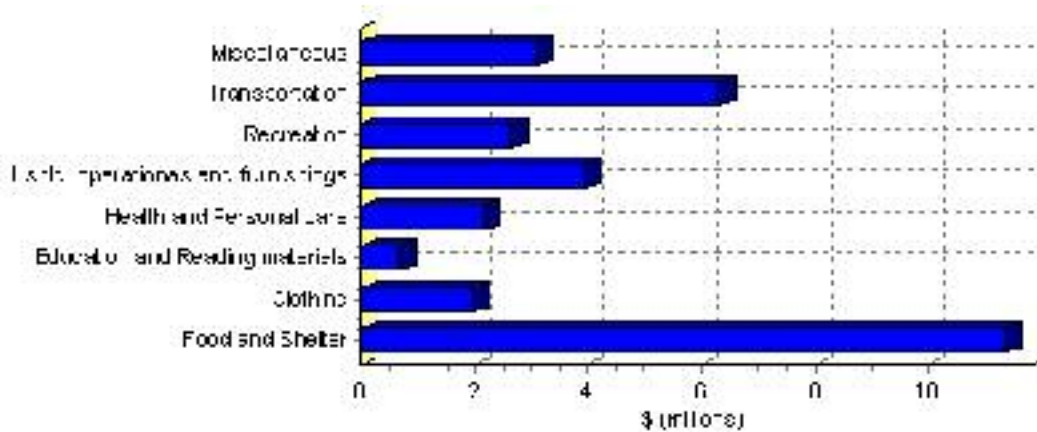
Source: Statistics Canada 1996 & 2001 Census (numbers may not add up due to rounding)

# Family Expenditure

Expenditure Category	1992	% of total	1996	% of total
Food and Shelter	\$9,554,760	36.85%	\$11,360,699	35.31%
Clothing	\$1,825,750	7.04%	\$1,983,743	6.16%
Education and Reading materials	\$582,230	2.25%	\$679,494	2.11%
Health and Personal care	\$1,615,135	6.23%	\$2,143,167	6.66%
Hshld. operations and furnishings	\$2,863,655	11.04%	\$3,935,481	12.23%
Recreation	\$2,180,935	8.41%	\$2,637,221	8.20%
Transportation	\$5,300,060	20.44%	\$6,329,063	19.67%
Miscellaneous	\$2,002,880	7.72%	\$3,108,814	9.66%
Total Current Consumption	\$25,931,940	100.00%	\$32,177,682	100.00%
Total # of Households	825		883	
Average Consumption per Household	\$31,433		\$36,441	

Source: Statistics Canada Family Expenditure Survey 1992 & 1996 (numbers may not add up due to rounding).

## Provost No. 52, M.D. of Family Expenditures (1996)



## Dwellings

<b>Occupied Private Dwellings by Type</b>	<b>1996</b>	<b>% of total</b>	<b>2001</b>	<b>% of total</b>
Apartments	10	1.14%	10	1.09%
Detached Duplexes	0	0.00%	5	0.55%
Movable Dwellings	125	14.20%	90	9.84%
Other single attached house	0	0.00%	0	0.00%
Row and semi-detached house	0	0.00%	0	0.00%
Single-detached house	740	84.09%	810	88.52%
Total number of occupied private dwellings	880	100.00%	915	100.00%
Private dwellings, owned	710	80.68%	780	85.25%
Private Dwellings, rented	170	19.32%	145	15.85%

Source: Statistics Canada 1996 & 2001 Census (numbers may not add up due to rounding)

<b>Private Dwellings by Period of Construction</b>	<b># of Dwellings</b>	<b>% of total</b>
Period of construction, before 1946	180	19.57%
Period of construction, 1946 - 1960	95	10.33%
Period of construction, 1961 - 1970	135	14.67%
Period of construction, 1971 - 1980	165	17.93%
Period of construction, 1981 - 1990	180	19.57%
Period of construction, 1991 - 2001	165	17.93%
Total number of private dwellings constructed	920	100.00%

Source: Statistics Canada 2001 Census (numbers may not add up due to rounding)

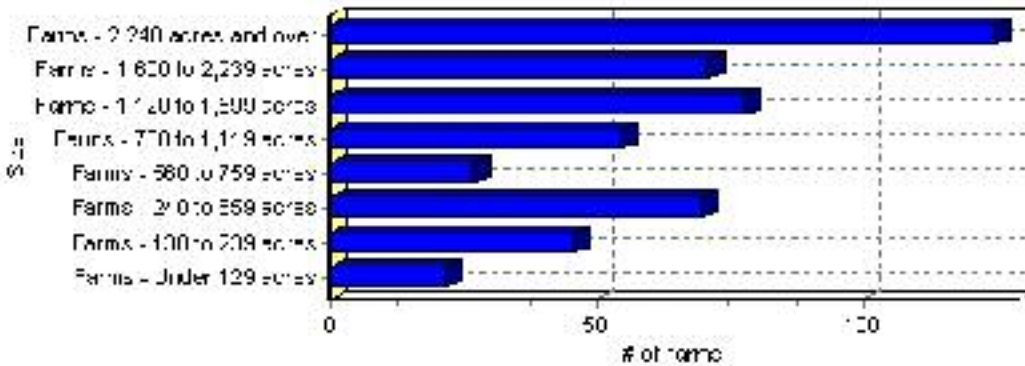
# Farming

Provost No. 52, M.D. of Total Farm Area : 495 acres

Farms by Total Farm Area (2001)	# of Farms	% of total
Farms - Under 129 acres	22	4.45%
Farms - 130 to 239 acres	46	9.31%
Farms - 240 to 559 acres	70	14.17%
Farms - 560 to 759 acres	27	5.47%
Farms - 760 to 1,119 acres	55	11.13%
Farms - 1,120 to 1,599 acres	78	15.79%
Farms - 1,600 to 2,239 acres	71	14.37%
Farms - 2,240 acres and over	125	25.30%
Total number of farms reporting	494	100.00%

Source: Statistics Canada 2001 Census of Agriculture(numbers may not add up due to rounding)

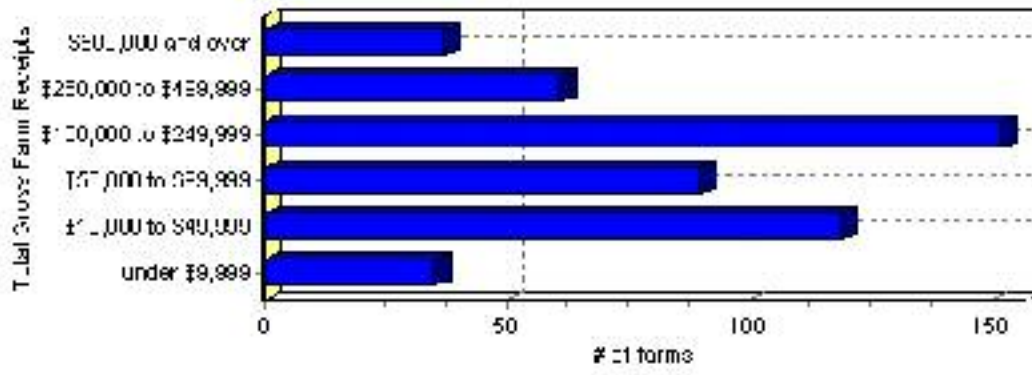
## # of Farms by Total Farm Area



Farms by Total Gross Farm Receipts - 2001	# of Farms	% of total
Farms gross farm receipts - under \$9,999	35	7.09%
Farms gross farm receipts - \$10,000 to \$49,999	119	24.09%
Farms gross farm receipts - \$50,000 to \$99,999	90	18.22%
Farms gross farm receipts - \$100,000 to \$249,999	152	30.77%
Farms gross farm receipts - \$250,000 to \$499,999	61	12.35%
Farms gross farm receipts - \$500,000 and over	37	7.49%
Total number of farms reporting	494	100.00%

Source: Statistics Canada 2001 Census of Agriculture(numbers may not add up due to rounding)

## Total Gross Farm Receipts

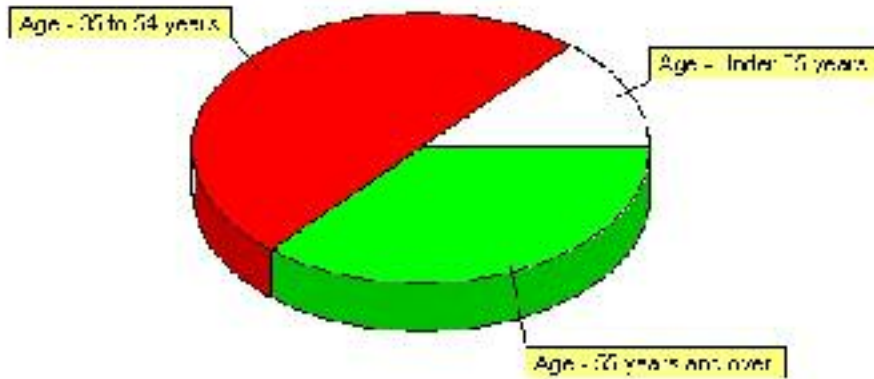


## Farming, Continued

Characteristics of Farm Operators	#	%
Age - Under 35 years	90	13.64%
Age - 35 to 54 years	330	50.00%
Age - 55 years and over	240	36.36%
Average age of operators	50	
Number of operators - Female	135	20.45%
Number of operators - Male	520	78.79%
Total number of operators reporting	660	100.00%

Source: Statistics Canada 2001 Census of Agriculture(numbers may not add up due to rounding)

### Age of Farm Operators



Disclaimer: Information in this profile has been provided from a variety of external sources. Although every effort has been made to ensure the accuracy, currency and reliability of the content and data, AlbertaFirst.com Ltd. accepts no responsibility in this regard.

© AlbertaFirst.com Ltd., 2006.