

Alix

www.villageofalix.ca

Welcome

Welcome to our community. We hope the information contained within this profile is useful in helping you to make a decision to come to Alix. After you have viewed our profile, don't forget to visit our home page by selecting the link above. If additional information is required, please contact our representative from the "Key Contacts" section.



Village of Alix Logo

Area Overview

The arrival of the Canadian Pacific Railway in 1905 promoted the growth of a tiny hamlet on the homestead of Joseph Todd, one of the first settlers of the area, and for some time this settlement was called Toddsville. After the C.P.R. built the first line through the area, Sir William Van Horne, then President of the C.P.R., changed the name to Alix after Mrs. Alexia Westhead, the first woman settler in the district.

Today, Alix is a progressive and growing community as evidenced by the recent signing of a Land Development Agreement with Tavistock Properties Inc. of Red Deer. Tavistock Properties has purchased 44 acres on the west side of Alix Lake and development will occur in phases with Phase 1 beginning in the spring of 2007. In addition, there are over 25 local businesses that offer almost everything that one will need. There are also three banking institutions. Alix can boast some of the finest recreation facilities in central Alberta, with its 9-hole golf course, Alix Lake Recreation Area, the Arena, Curling Rink, and hiking trail, etc.

If you would love living beside a lake, swimming, boating, skating, people who care about their neighbours, small town security minutes away from big town amenities and having lots to do or doing nothing at all, you would love Alix.

Community Services

Municipal

Village of Alix

Box 87

Alix, Alberta

T0C 0B0

Tel: 403-747-2495

Fax: 403-747-3663

E mail:

Community Lifestyle

Recreation

Local recreational facilities include the Alix Lake Recreational Area, Indoor Arena [skating and hockey], Curling Rink, Golf Course [9 holes, grass greens], Agricultural Facility [gymkhana area, horse race track], school gymnasiums [2], and baseball diamonds.

Community Organizations

Local community groups include Alix Minor Hockey, the Alix Figure Skating Club, Curling Club, Golf Club, Agricultural Society, Lions Club, Chamber of Commerce, Agricultural Society, 4-H Beef Club, Brownies, Cubs and Softball.

Religious Services

- Alix United Church
- Alix Anglican Church
- Alix Evangelical Free Church

Special Annual Events/Attractions

Summer events include Alix Beach Days, Provincial Wakeboard Competition, Jet Ski Competition, Show and Shine.

The Alix Arena Board also sponsors an annual spring Bull-A-Rama.

Alix is celebrating it's 100th Birthday in 2007 and from June 29, 2007 to July 1, 2007 come and enjoy the Alix Centennial Homecoming. For Pre-Registration and Ticket Sales for Saturday June 30 BBQ and Music show please contact Donna Peterson - (403)747-2584 or cpete@platinum.ca.

Hospitality

Accommodation

- Alix Motel
- Alix Hotel
- Two campgrounds

Restaurants

There are 3 restaurants in Alix.



2003 Mural on Alix Lake Campground Concession

Economic Base

The economic base of the region is oil and gas, cattle, dairy, hogs and grain farming.

Economic Facts

Development of a new 225 lot residential subdivision will begin in the spring of 2007.

Financial Institutions

- Community Savings & Credit Union Ltd.
- Alberta Treasury Branch
- ING Western

Education

Public School:

Grades K to 12 and a pre-school program is also offered. Alix is part of the Wolf Creek Regional School Division #32, headquartered in Ponoka.

Daycare/Nursery

N/A

Separate

N/A

Private

N/A

Emergency Services

Fire Protection

Alix is served by a volunteer fire department. CALL 9-1-1. Response vehicles include 1 Ford ambulance for medical/fire first responses, 2 superior fire trucks for urban and rural emergencies, a rapid response unit and zodiac for water rescue.

Police Services

Alix is served by the Bashaw detachment of the Royal Canadian Mounted Police [RCMP] [Tel: 403-372-3593].

Ambulance Services

Alix is served by the Lacombe Ambulance Service [advanced life support] [Tel: 403-782-6555].

Health Care

The nearest hospitals are in Stettler [37 km east], Lacombe [40 km west] and Red Deer [65 km west]. Mainstreet Medical Services, Lacombe, Alberta visit Alix 2 days per week in the Medical Building and DTHR hold immunization clinics once per month in the Alix

Key Contacts for Business Development

Municipal

Village of Alix
Box 87
Alix, Alberta
T0C 0B0
Tel: 403-747-2495
Fax: 403-747-3663
E-Mail: gator@villageofalix.ca

Marlene Kortzman
Mayor

Eric Jerrard
Acting Chief Administrative Officer
cao@villageofalix.ca

Provincial (Updated October 2006)

Alberta Economic Development
2nd Floor, Provincial Building
4920 - 51 Street
Red Deer, Alberta
T4N 6K8
Tel: 403-340-5300
Fax: 403-340-5231

Dawna Allard, Regional Manager
dawna.allard@gov.ab.ca
Lisa Houle, Regional Project Officer
lisa.houle@gov.ab.ca

Raymond Prins
Member of the Legislative Assembly [MLA]
Lacombe-Ponoka Constituency
#503 Legislature Building
10800-97 Avenue
Edmonton, Alberta
T5K 2B6
Tel: 780-422-3353
Fax: 780-422-0351

Constituency Office:
960B Hwy 2A
Lacombe AB
T4L 1J9
Tel: 403-782-7725
Toll Free: 1-800-565-6432
Fax: 403-782-3307

Federal (Updated October 2006)

Blaine Calkins Member of Parliament [MP]

Wetaskiwin

House of Commons

Ottawa, Ontario

K1A 0A6

Tel: 613-947-4608

Fax: 613-947-4611

Constituency Office:

#6 4612 -50 Street

Ponoka, Alberta

T4J 1S7

Tel: 403-783-5530

www.blainecalkinsmp.ca

Location

The Village of Alix is located in the County of Lacombe #14, in the heart of central Alberta's Parkland. Located halfway between Lacombe and Stettler, just west of Buffalo Lake, it is 68 km east of Red Deer and 190 km south of Edmonton.

Post Secondary Education

Alix residents are within commuting distance of Red Deer College, located in Red Deer. Programs include one year certificates, two year diplomas, university transfer, apprenticeship and training in technological areas, academic upgrading and continuing education.

Taxation

	<u>Residential/Farmland</u>	<u>Non-Residential</u>
2006		
Municipal Tax Rate	12.6000	12.6000
Education - Alberta School Foundation Fund Tax Rate	4.39	6.13

Transportation

Air Services

The nearest airport is in Stettler. The nearest commercial and air freight service is at Edmonton, 128 km [80 miles] northwest of Alix.

Rail Services

Alix is served by a Canadian Pacific Railway branch line and Canadian National Railway secondary main line. There is spur trackage available.

Highways

Connecting highways are Highway 21, leading north to Fort Saskatchewan and Edmonton and south to Calgary via Highway 1, Highway 12 leading west to Highway 2, and Secondary Highway 601, leading east to Rochon Sands Provincial Park, and intersecting Highway 11 to Red Deer.

Trucking Firms

- Highway 9 Express
- Stettler Transport.

Bus Services

Greyhound Bus Lines provide regularly scheduled inter-community bus service. For information on schedules phone 747-2414

Couriers and Taxis

Loomis and Purolator Couriers, CanPar

Towing Service

Alix Auto Wreckers

Telephone: (403) 747-2565

Utilities

Electrical Power

Epcor,

P.O. Box 880, Strn. M,

Calgary, Alberta

T2P 5H7

Tel: 310-4300 Toll Free

Natural Gas

ATCO

Tel: 310-5678 Toll Free

Telephone

TELUS

Tel: 310-2255 Toll Free

Water Supply

Surface water from the Highway 12/21 Regional Water Commission line from Stettler Treatment Plant with 589.699 cubic meters available to the Village. The water usage rate per two month billing period is \$42.50 for the first 4,000 gallons of water consumed and \$0.70 for every hundred gallons of water consumed thereafter.

Waste Management

The residential and commercial sewage treatment rate is \$34.60 per billing period, and 70% of water over usage of 4000 gallons.

The residential and commercial garbage collection rate is \$30.00 per billing period. The rate increases to \$55.00 for commercial outlets with large volumes of waste. There is also a \$5.00 per billing, recycling/compost fee per household, business or unit.

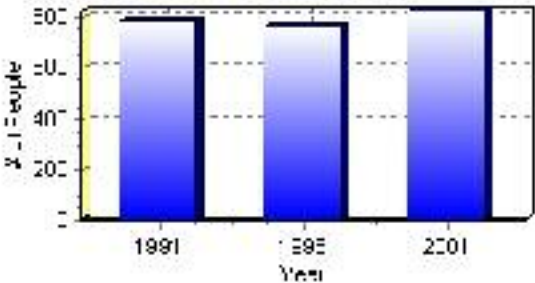
Population

Total Population

Population 2004*	825
Population 2003*	825
Population 2002*	825
Population 2001**	825
Population 2000*	775
Population 1996**	765
Population 1991**	782
Population % change 1991-1996	-2.22%
Population % change 1996-2001	7.27%

* Source: Official Population List, Alberta Municipal Affairs
** Source: Statistics Canada 1991, 1996, & 2001 Census

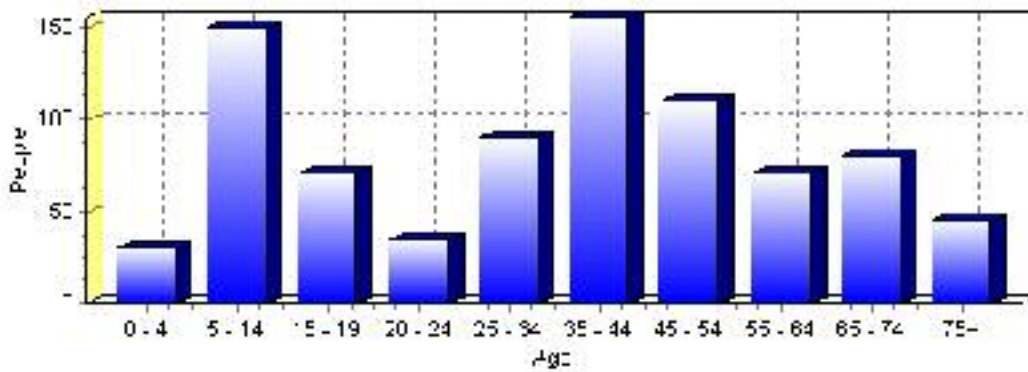
Total Population 1991-2001



Population by Age and Gender	1996 Male	1996 Female	1996 Total	2001 Male	2001 Female	2001 Total
Age 0 - 4	25	15	40	20	10	30
Age 5 - 14	70	55	125	85	65	150
Age 15 - 19	25	25	50	45	25	70
Age 20 - 24	25	25	50	15	20	35
Age 25 - 34	45	40	85	45	45	90
Age 35 - 44	65	60	125	80	75	155
Age 45 - 54	45	25	70	60	50	110
Age 55 - 64	35	50	85	30	40	70
Age 65 - 74	40	35	75	40	40	80
Age 75 and older	20	25	45	20	25	45
Total All Persons	400	365	765	435	390	825

Source: Statistics Canada 1996 & 2001 Census (numbers may not add up due to rounding)

Alix Population by Age Group (2001)

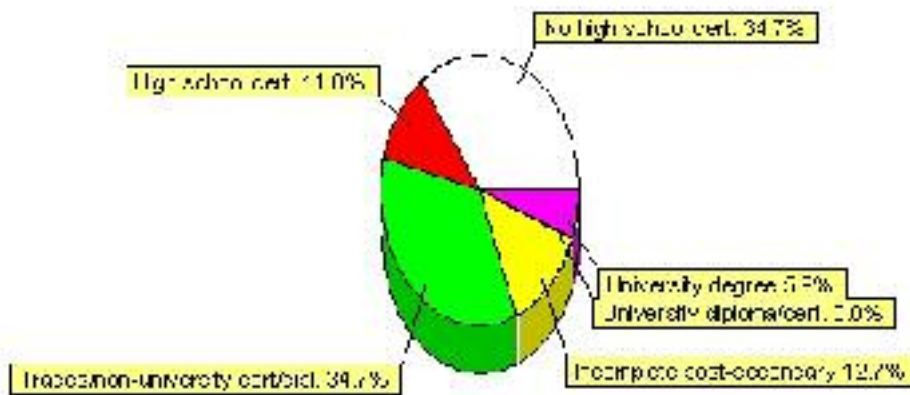


Education Statistics

Highest level of schooling for Population 20yrs and older	2001	%
People without high school certificates	205	34.75%
People with high school certificates	65	11.02%
People with trades or non-university certificate or diploma	205	34.75%
People with post-secondary education (not completed)	75	12.71%
People with university diploma/certificate	0	0.00%
People with university degree	35	5.93%
Total Population 20 years and older	590	100.00%

Source: Statistics Canada 2001 Census (numbers may not add up due to rounding)

Alix Highest Level of Schooling 2001



Population with Post Secondary Qualifications	1996	%	2001	%
Agriculture and biological sciences	10	4.55%	10	4.08%
Commerce, management and business administration	25	11.36%	40	16.33%
Educational, recreational and counseling services	25	11.36%	15	6.12%
Engineering and applied science tech. and trades	120	54.55%	115	46.94%
Engineering and applied sciences	0	0.00%	0	0.00%
Fine and applied arts	25	11.36%	0	0.00%
Health professionals, science and technologies	0	0.00%	20	8.16%
Humanities and related fields	10	4.55%	10	4.08%
Mathematics and physical sciences	0	0.00%	0	0.00%
Social sciences and related fields	0	0.00%	30	12.24%
Other and/or no specialization	0	0.00%	0	0.00%
Total people with post secondary qualifications	220	100.00%	245	100.00%
Females with post-secondary qualifications	85	38.64%	110	44.90%
Males with post-secondary qualifications	135	61.36%	135	55.10%

Source: Statistics Canada 1996 & 2001 Census (numbers may not add up due to rounding)

Labour Force

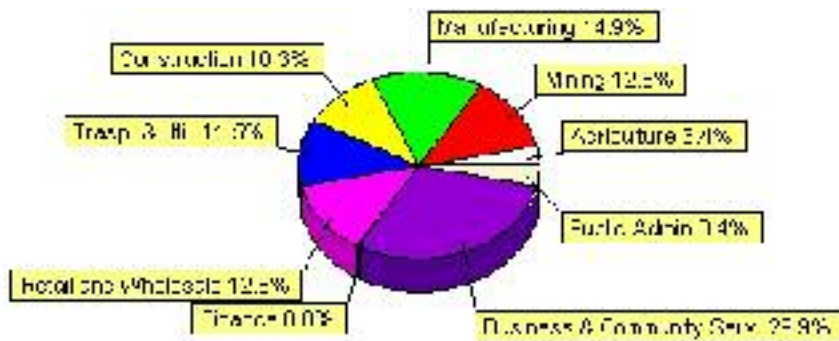
Labour force by activity	1996	2001
In the labour force, both sexes	400	440
Not in the labour force, both sexes	225	225
Total population 15 and over	630	665
Employed, both sexes	365	395
Unemployed, both sexes	40	50
Participation rate, both sexes	63.00%	66.00%
Unemployment rate, both sexes	10.00%	11.00%

Source: Statistics Canada 1996 & 2001 Census (numbers may not add up due to rounding)

Labour Force by Industry Division	1996	% of total	2001	% of total
Agriculture	20	5.06%	15	3.45%
Mining	25	6.33%	55	12.64%
Manufacturing	40	10.13%	65	14.94%
Construction	50	12.66%	45	10.34%
Transportation. & Utilities	30	7.59%	50	11.49%
Retail and Wholesale	55	13.92%	55	12.64%
Finance	10	2.53%	0	0.00%
Business & Community Services	100	25.32%	130	29.89%
Public Administration	25	6.33%	15	3.45%
Total All Industries	395	100.00%	435	100.00%

Source: Statistics Canada 1996 & 2001 Census (numbers may not add up due to rounding)

Alix Labour Force By Industry - 2001



Labour Force by Major Occupational Groups	1996	%	2001	%
Management occupations	25	6.33%	20	4.60%
Business, Finances and administrative occupations	40	10.13%	60	13.79%
Natural and applied sciences and related occupations	0	0.00%	25	5.75%
Health occupations	0	0.00%	15	3.45%
Occupations in social science; education; government and religion	10	2.53%	10	2.30%
Occupations in art; culture; recreation and sport	10	2.53%	0	0.00%

Sales and service occupations	120	30.38%	75	17.24%
Trades; transport; equipment operators and related occupations	85	21.52%	115	26.44%
Occupations unique to primary industry	65	16.46%	65	14.94%
Occupations unique to processing; manufacturing and utilities	30	7.59%	45	10.34%
Occupations not elsewhere classified	0	0.00%	10	2.30%
Total - All Occupations (major groups)	395	100.00%	435	100.00%
Females - All Occupations	180	45.57%	190	43.68%
Males - All Occupations	215	54.43%	245	56.32%

Source: Statistics Canada 1996 & 2001 Census (numbers may not add up due to rounding)

Income

Family Income (Number of Families)	1996	%	2001	%
less than \$19,999	15	7.14%	30	14.29%
\$20,000 - \$39,999	100	47.62%	75	35.71%
\$40,000 - \$59,999	20	9.52%	65	30.95%
\$60,000 and over	75	35.71%	65	30.95%
Total number of families	210	100.00%	235	111.90%
Average family income	\$48,395		\$54,164	
Median family income	\$33,756		\$48,625	

Source: Statistics Canada 1996 & 2001 Census (numbers may not add up due to rounding)

Household Income (Number of Households)	1996	%	2001	%
less than \$19,999	75	24.19%	40	11.76%
\$20,000 - \$39,999	130	41.94%	115	33.82%
\$40,000 - \$59,999	40	12.90%	65	19.12%
\$60,000 and over	30	9.68%	115	33.82%
Total number of households	310	100.00%	340	100.00%
Average household income	\$41,911		\$49,232	
Median household income	\$32,950		\$43,243	

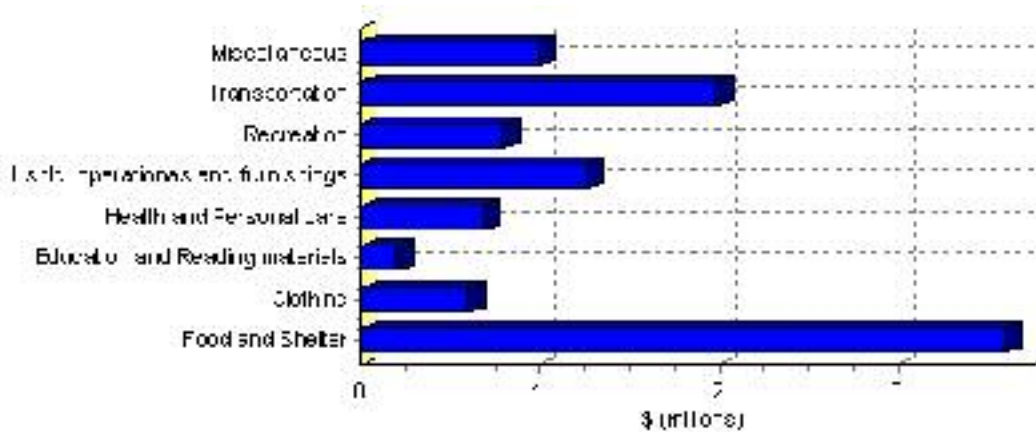
Source: Statistics Canada 1996 & 2001 Census (numbers may not add up due to rounding)

Family Expenditure

Expenditure Category	1992	% of total	1996	% of total
Food and Shelter	\$2,867,375	38.31%	\$3,607,623	35.58%
Clothing	\$486,555	6.50%	\$601,297	5.93%
Education and Reading materials	\$133,445	1.78%	\$202,655	2.00%
Health and Personal care	\$484,900	6.48%	\$680,936	6.71%
Hshld. operations and furnishings	\$811,865	10.85%	\$1,263,132	12.46%
Recreation	\$528,410	7.06%	\$796,185	7.85%
Transportation	\$1,552,445	20.74%	\$1,990,869	19.63%
Miscellaneous	\$615,030	8.22%	\$998,151	9.84%
Total Current Consumption	\$7,483,975	100.00%	\$10,140,848	100.00%
Total # of Households	300		312	
Average Consumption per Household	\$24,947		\$32,503	

Source: Statistics Canada Family Expenditure Survey 1992 & 1996 (numbers may not add up due to rounding).

Alix Family Expenditures (1996)

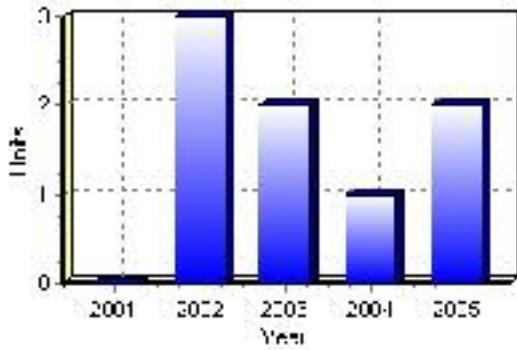


Building Permits

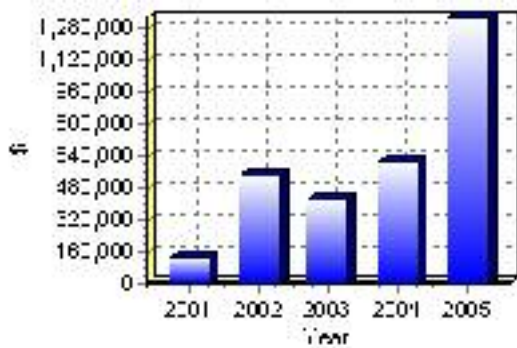
Total Building Permit Values	2001	2002	2003	2004	2005
Building Permits Value, Commercial	\$0	\$3,000	\$0	\$383,000	\$885,000
Building Permits Value, Industrial	\$0	\$189,000	\$0	\$0	\$104,000
Building Permits Value, Institutional	\$0	\$0	\$0	\$0	\$0
Building Permits Value, Residential	\$128,000	\$347,000	\$420,000	\$226,000	\$336,000
Building Permits Value, Total	\$128,000	\$539,000	\$420,000	\$609,000	\$1,325,000
Total Housing Starts	0	3	2	1	2

Source: Statistics Canada 2000-2004 Building Permits (numbers may not add up due to rounding)

Total Housing Starts



Value of Building Permits



Dwellings

Occupied Private Dwellings by Type	1996	% of total	2001	% of total
Apartments	0	0.00%	0	0.00%
Detached Duplexes	0	0.00%	5	1.49%
Movable Dwellings	70	22.58%	0	0.00%
Other single attached house	0	0.00%	0	0.00%
Row and semi-detached house	20	6.45%	20	5.97%
Single-detached house	225	72.58%	310	92.54%
Total number of occupied private dwellings	310	100.00%	335	100.00%
Private dwellings, owned	280	90.32%	270	80.60%
Private Dwellings, rented	30	9.68%	65	19.40%

Source: Statistics Canada 1996 & 2001 Census (numbers may not add up due to rounding)

Private Dwellings by Period of Construction	# of Dwellings	% of total
Period of construction, before 1946	50	14.93%
Period of construction, 1946 - 1960	60	17.91%
Period of construction, 1961 - 1970	45	13.43%
Period of construction, 1971 - 1980	80	23.88%
Period of construction, 1981 - 1990	50	14.93%
Period of construction, 1991 - 2001	50	14.93%
Total number of private dwellings constructed	335	100.00%

Source: Statistics Canada 2001 Census (numbers may not add up due to rounding)

Disclaimer: Information in this profile has been provided from a variety of external sources. Although every effort has been made to ensure the accuracy, currency and reliability of the content and data, AlbertaFirst.com Ltd. accepts no responsibility in this regard.

© AlbertaFirst.com Ltd., 2006.