
Introductory Data on American Indians

American Indian Community Profile and Data Center

**A program of
American Indian Policy Center**

John Poupart, President
Cecilia Martinez, Research Director
Chelsea Fairbanks, Administrative Assistant

This database was compiled with the assistance of: Patty Fitzgerald, Mark Jorgenson, Allison Pluntz, Ellen Mongolis, and Cindy Swenson.

Support for this project came from:

Center for Urban and Regional Affairs, University of Minnesota
Fund of the Sacred Circle
St. Paul Foundation
McKnight Foundation

American Indian Policy Center
1463 Hewitt Avenue
St. Paul, MN 55104
p: 651.644.1728
f: 651.644.0740
www.airpi.org
airpi@cpinternet.com



Special note: The racial categories for the 2000 Census were different than the 1990 Census. In 2000, individuals had the choice of identifying themselves as American Indian and Alaska Native OR American Indian and Alaska Native and another race. This was NOT an option in the 1990 Census therefore, comparisons between 1990 and 2000 Census are highly problematic. The American Indian Policy Center has chosen to focus on those individuals who identified themselves as only American Indian and Alaska Native alone. It is important that the cultural integrity of American Indians is maintained.

The data on race were derived from answers to the question on race which was asked of all people. The concept of race as used by the Census Bureau reflects self-identification by people according to the race or races with which they most closely identify. These categories are socio-political constructs and should not be interpreted as being scientific or anthropological in nature. Furthermore, the race categories include both racial and national origin groups.

American Indian or Alaska Native — A person having origins in any of the original peoples of North and South America (including Central America), and who maintain tribal affiliation or community attachment. It includes people who classified themselves as described below.

American Indian — Includes people who indicated their race as “American Indian,” entered the name of an Indian tribe, or reported such entries as Canadian Indian, French-American Indian, or Spanish-American Indian.

American Indian Tribe — Respondents who identified themselves as American Indian were asked to report their enrolled or principal tribe. Therefore, tribal data in tabulations reflect the written entries reported on the questionnaires. Some of the entries (for example, Iroquois, Sioux, Colorado River, and Flathead) represent nations or reservations. The information on tribe is based on self identification and therefore does not reflect any designation of a federally- or state-recognized tribe. Information on specific American Indian tribes is presented in summary files. The information for Census 2000 is derived from the American Indian Tribal Classification List for the 1990 census that was updated based on a December 1997 *Federal Register Notice*.

Alaska Native — Includes written responses of Eskimos, Aleuts, and Alaska Indians as well as entries such as Arctic Slope, Inupiat, Yupik, Alutiiq, Egegik, and Pribilovian. The Alaska tribes are the Alaskan Athabaskan, Tlingit, and Haida. The information for Census 2000 is derived from the American Indian Tribal Classification List for the 1990 census and was expanded to list the individual Alaska Native Villages when provided as a written response for race. (1)

(1) U.S. Census Bureau, <http://www.census.gov>

Table of Contents

Project credits	2
Special note on racial categories	3
Racial category definitions	4
Population data	5
Children, families and school data	13
Mortality data	33
Out of home placements	35
Poverty data	38
Housing data	44

AMERICAN INDIAN POPULATION

BY STATE

State	Population	State	Population	State	Population
Alabama	22,430	Louisiana	25,477	Ohio	24,486
Alaska	98,043	Maine	7,098	Oklahoma	273,230
Arizona	255,879	Maryland	15,423	Oregon	45,211
Arkansas	17,808	Massachusetts	15,015	Pennsylvania	18,348
California	333,346	Michigan	58,479	Rhode Island	5,121
Colorado	44,241	Minnesota	54,967	South Carolina	13,718
Connecticut	9,639	Mississippi	11,652	South Dakota	62,283
Delaware	2,731	Missouri	25,076	Tennessee	15,152
Florida	53,541	Montana	56,068	Texas	118,362
Georgia	21,737	Nebraska	14,896	Utah	29,684
Hawaii	3,535	Nevada	26,420	Vermont	2,420
Idaho	17,645	New Hampshire	2,964	Virginia	21,172
Illinois	31,006	New Jersey	19,492	Washington	93,301
Indiana	15,815	New Mexico	173,483	West Virginia	3,606
Iowa	8,989	New York	82,461	Wisconsin	47,228
Kansas	24,936	North Carolina	99,551	Wyoming	11,133
Kentucky	8,616	North Dakota	31,329	TOTAL U.S.	2,474,243

Source: Census 2000
<http://www.census.gov>

Note: Population numbers based on American Indian and Alaskan Native Alone category

American Indian Policy Center

AMERICAN INDIAN RESERVATION POPULATION IN MINNESOTA*

	Total Population	American Indian	White	Black	Asian	Two or more races	Some other race	Percent Indian
CHIPPEWA								
Bois Forte	657	464	185	0	2	6	0	71%
Fond du Lac	3,728	1,353	2,215	3	4	145	8	36%
Grand Portage	557	322	199	0	0	34	2	58%
Leech Lake**	10,205	4,561	5,278	9	16	311	26	45%
Mille Lacs***	4,774	1,237	3,422	27	6	77	5	26%
MN Chippewa Trust	78	64	14	0	0	0	0	82%
Red Lake	5,162	5,071	61	5	2	20	3	98%
White Earth	9,192	3,378	5,105	7	5	677	20	37%
CHIPPEWA TOTALS	34,353	16,450	16,479	42	35	1,270	64	48%
DAKOTA								
Lower Sioux	335	294	28	1	0	9	3	88%
Prairie Island	199	166	33	0	0	0	0	83%
Shakopee	338	214	87	1	3	32	1	63%
Upper Sioux	57	47	10	0	0	0	0	82%
DAKOTA TOTALS	929	721	158	2	3	41	4	78%
RESERVATION TOTALS	35,282	17,171	16,637	44	38	1,311	68	49%

Source: Census 2000
<http://www.census.gov>

* Population numbers include reservation and off-reservation trust lands

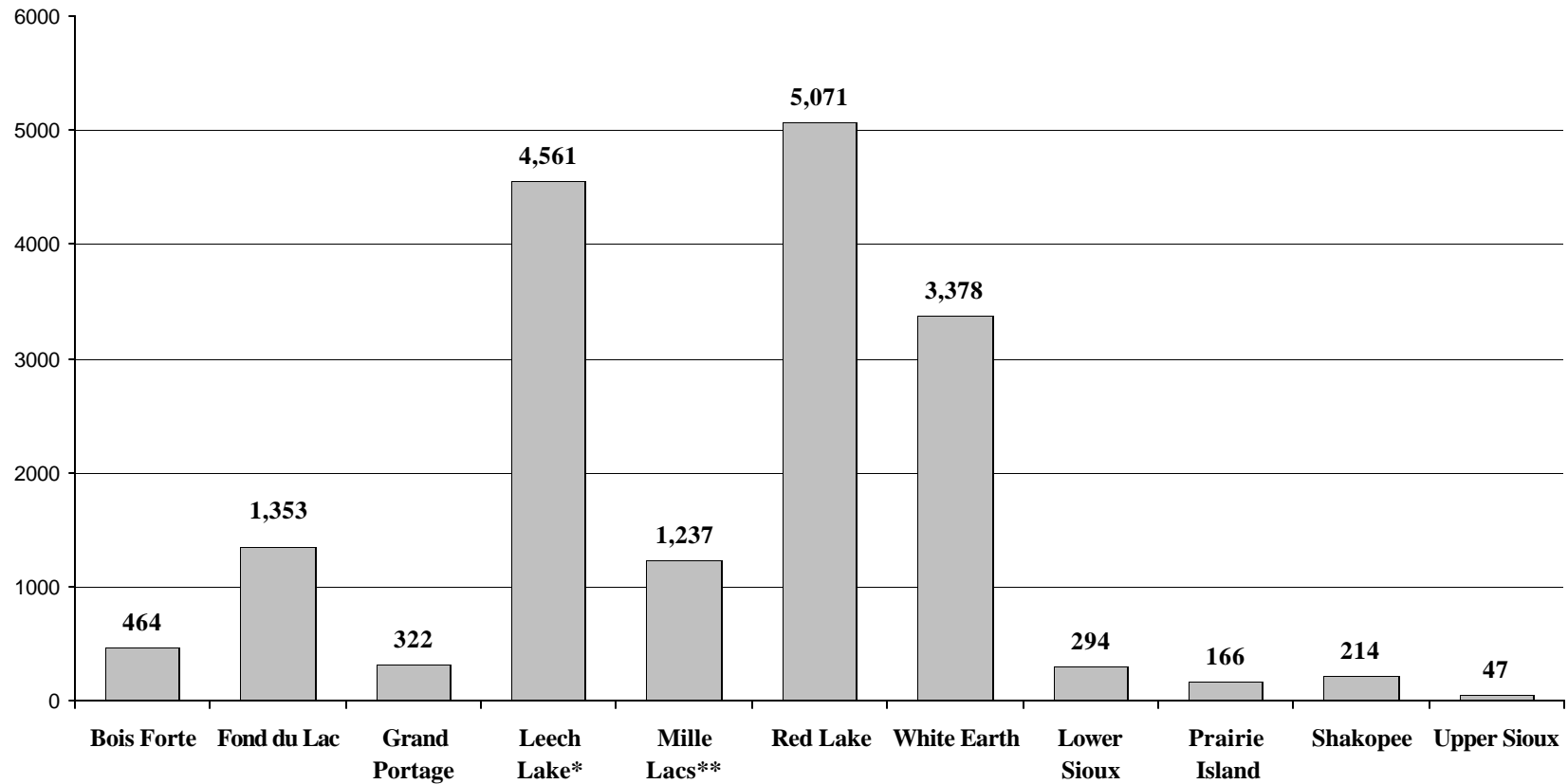
** Leech Lake total population incorporates 4 in the Native Hawaiian Pacific Islander category

*** Mille Lacs population includes Sandy Lake

American Indian Policy Center

AMERICAN INDIAN POPULATION IN MINNESOTA

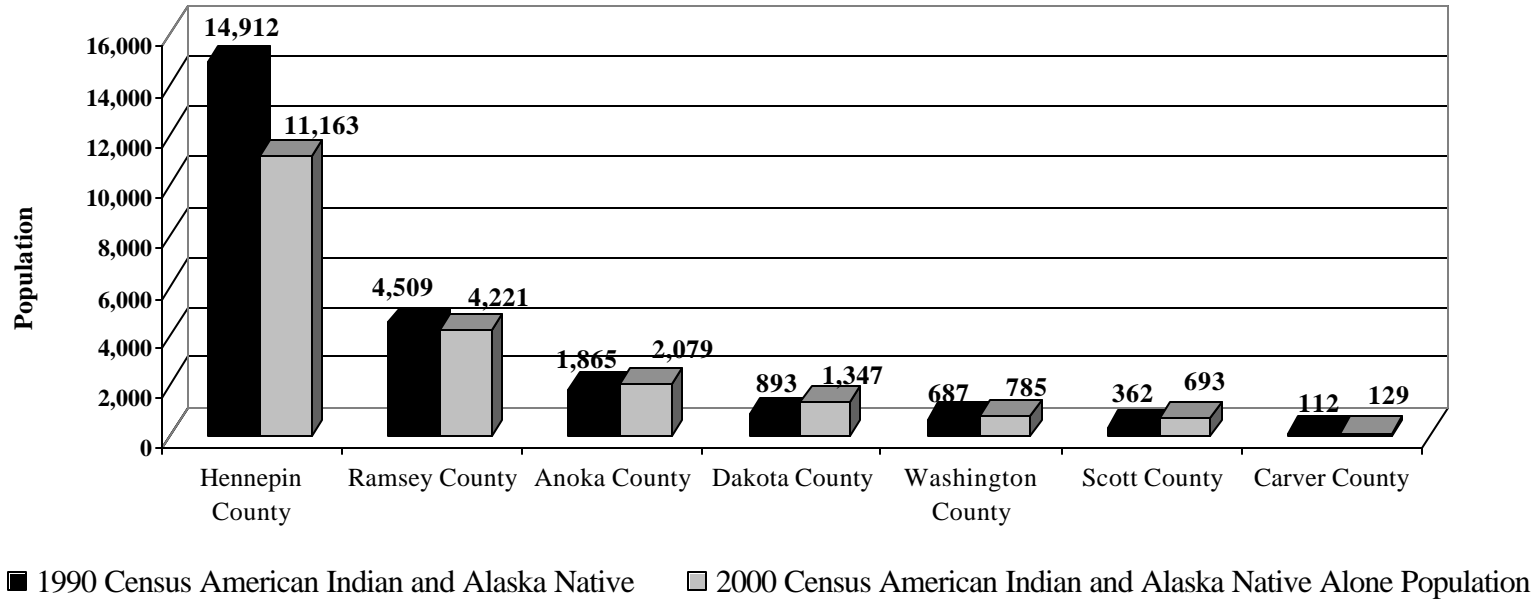
By Reservation



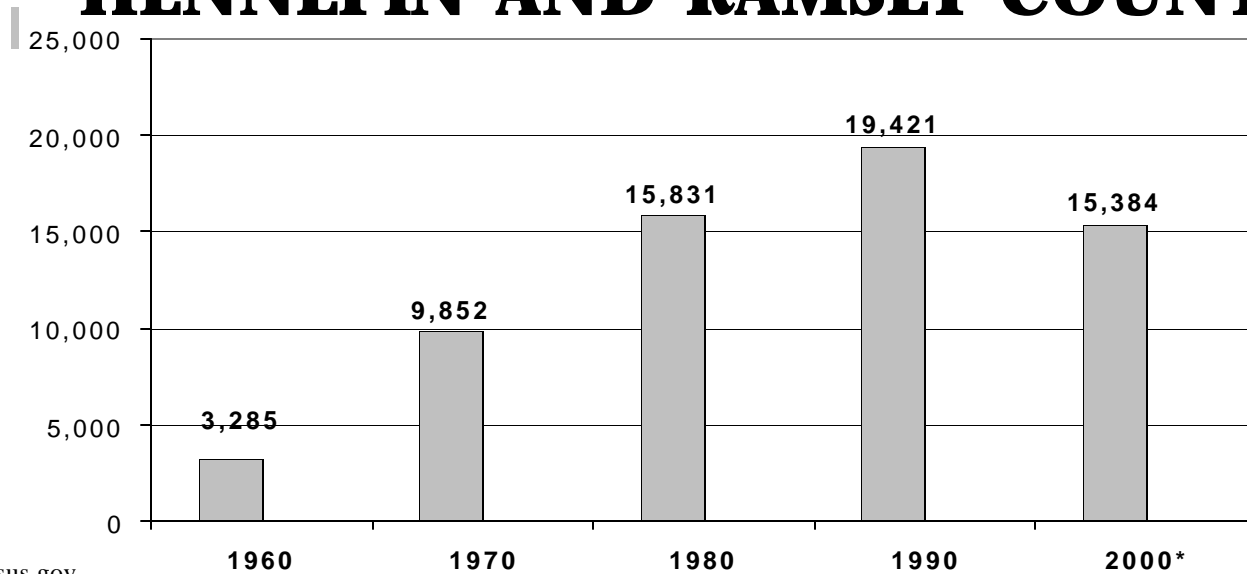
Source: Census 2000
<http://www.census.gov>

Note: Numbers based on American Indian and Alaska Native Alone category
* Mille Lacs includes Sandy Lake

SEVEN COUNTY METRO POPULATION



HENNEPIN AND RAMSEY COUNTY

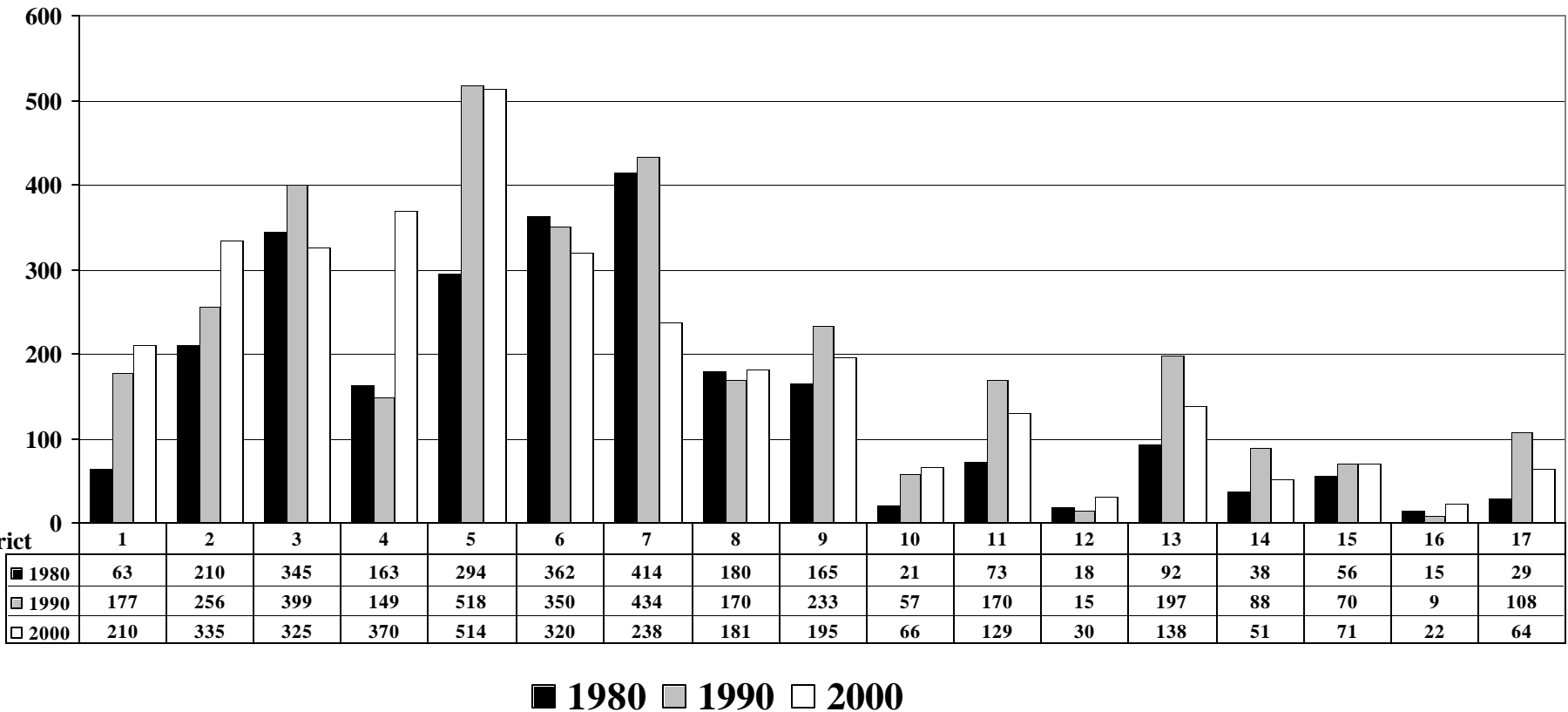


Source: U.S. Census
<http://www.census.gov>

*2000 data is American Indian and Alaska Native alone

AMERICAN INDIAN POPULATION IN ST. PAUL

BY PLANNING DISTRICT



Source: Census 2000
<http://www.census.gov>

Note: 1980 and 1990 population numbers based on American Indian and Alaska Native category.
 2000 population numbers based on American Indian and Alaska Native Alone category.

AMERICAN INDIAN POPULATION IN MINNEAPOLIS

By Neighborhood

Neighborhood	Neighborhood	Neighborhood	Neighborhood
Armatage 21	East Isles 10	Logan Park 80	Prospect Park E. River Road 70
Audobon Park 63	Ecco 5	Longfellow 200	Regina 33
Bancroft 52	Elliot Park 182	Loring Park 61	Seward 153
Beltrami 59	Ericsson 40	Lowry Hill 4	Sheridan 83
Bottineau 57	Field 16	Lowry Hill East 65	Shingle Creek 51
Bryant 32	Folwell 112	Lyndale 105	St. Anthony East 67
Bryn Mawr 4	Fulton 18	Lynnhurst 9	St. Anthony West 32
Camden Indust. Area 1	Hale 11	Marcy Holmes 76	Standish 262
Carag 56	Harrison 58	Marshall Terrace 41	Stevens Sq. Loring Heights 73
Cedar Isles Dean 3	Hawthorne 148	McKinley 104	Sumner Glenwood 1
Cedar Riverside West Bank 67	Hiawatha 105	Mid City Indust. Area 0	Tangletown 17
Central 199	Holland 164	Minnehaha 84	U of MN 10
Cleveland 48	Howe 205	Morris Park 67	Victory 42
Columbia 47	Humboldt Indust. Area 0	Near North 74	Waite Park 35
Como 74	Jordon 167	Nicollet Island East Bank 5	Webber Camden 97
Cooper 58	Keewaydin 22	North Loop 77	Wenonah 96
Corcoran 195	Kenny 7	Northeast Park 17	West Calhoun 2
Diamond Lake 24	Kenwood 6	Northrup 67	Whittier 328
Downtown East 1	King Field 102	Page 6	Willard Hay 113
Downtown West 80	Lind Bohanon 108	Phillips 2352	Windom 52
East Harriet 12	Linden Hills 33	Powderhorn Park 477	Windom Park 118

Source: Census 2000

<http://www.census.gov>

Note: Data is for American Indian and Alaska Native alone.

American Indian Policy Center

AMERICAN INDIAN POPULATION SUMMARIES

	Saint Paul	Minneapolis	Metropolitan Counties*	Reservation Totals	Minnesota
1990 Census Count	3,400	12,335	23,340	26,066	49,909
2000 American Indian Alone	3,259	8,378	20,417	17,107	54,967
2000 American Indian + One Race	2,218	3,347	12,493	1,215	22,743
2000 Categories Combined	5,477	11,725	32,910	18,322	77,710

Source: Census 2000
<http://www.census.gov>

*Includes Seven Metropolitan Counties: Anoka, Carver, Dakota, Hennepin, Ramsey, Scott and Washington.

American Indian Policy Center

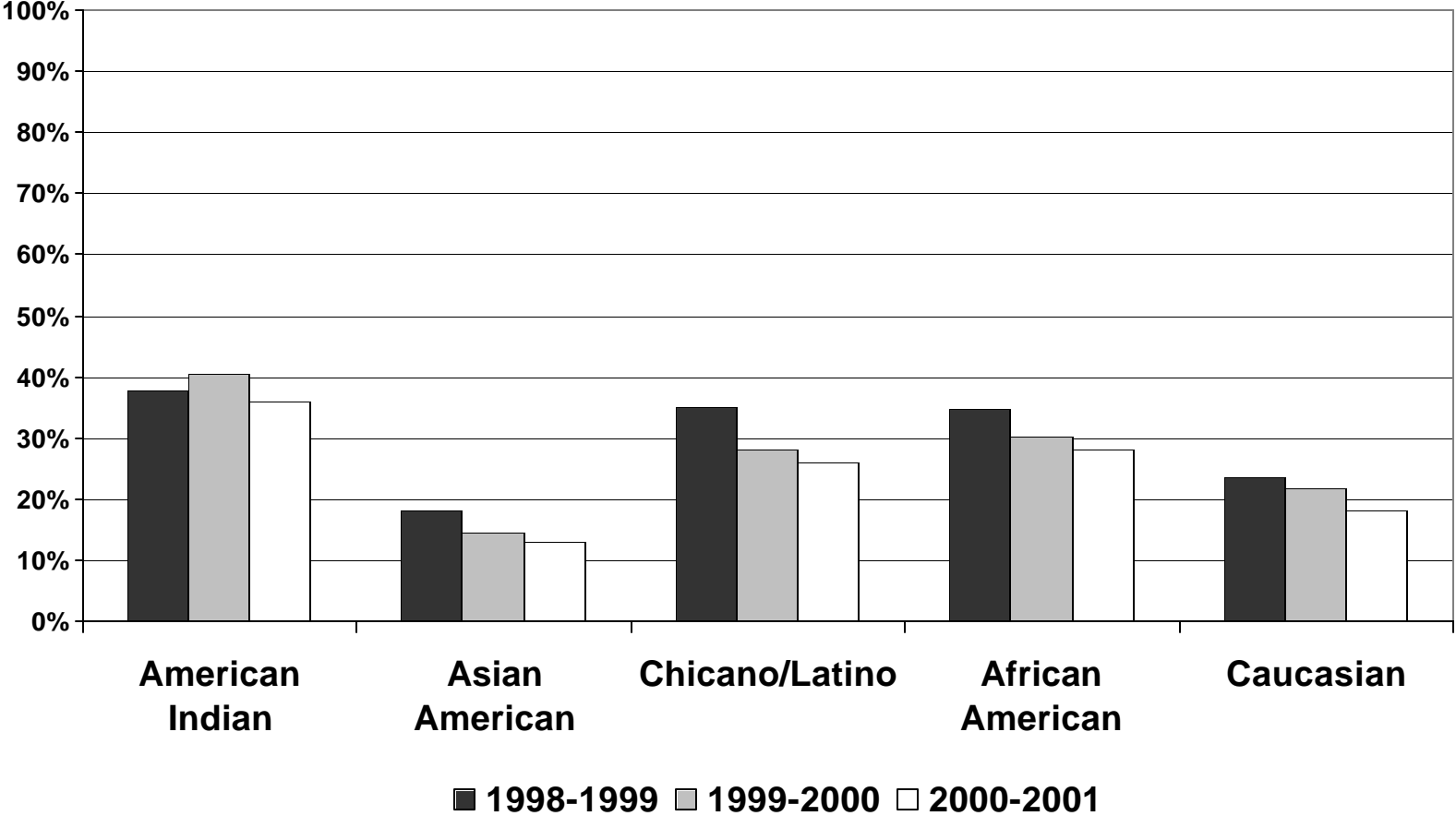
AMERICAN INDIAN CHILDREN MINNEAPOLIS AND ST. PAUL

	<i>Minneapolis</i>	<i>St. Paul</i>
Under 5 Years	720	295
Male	331	174
Female	389	121
Under 18 Years	2971	1171
Male	1450	591
Female	1521	586

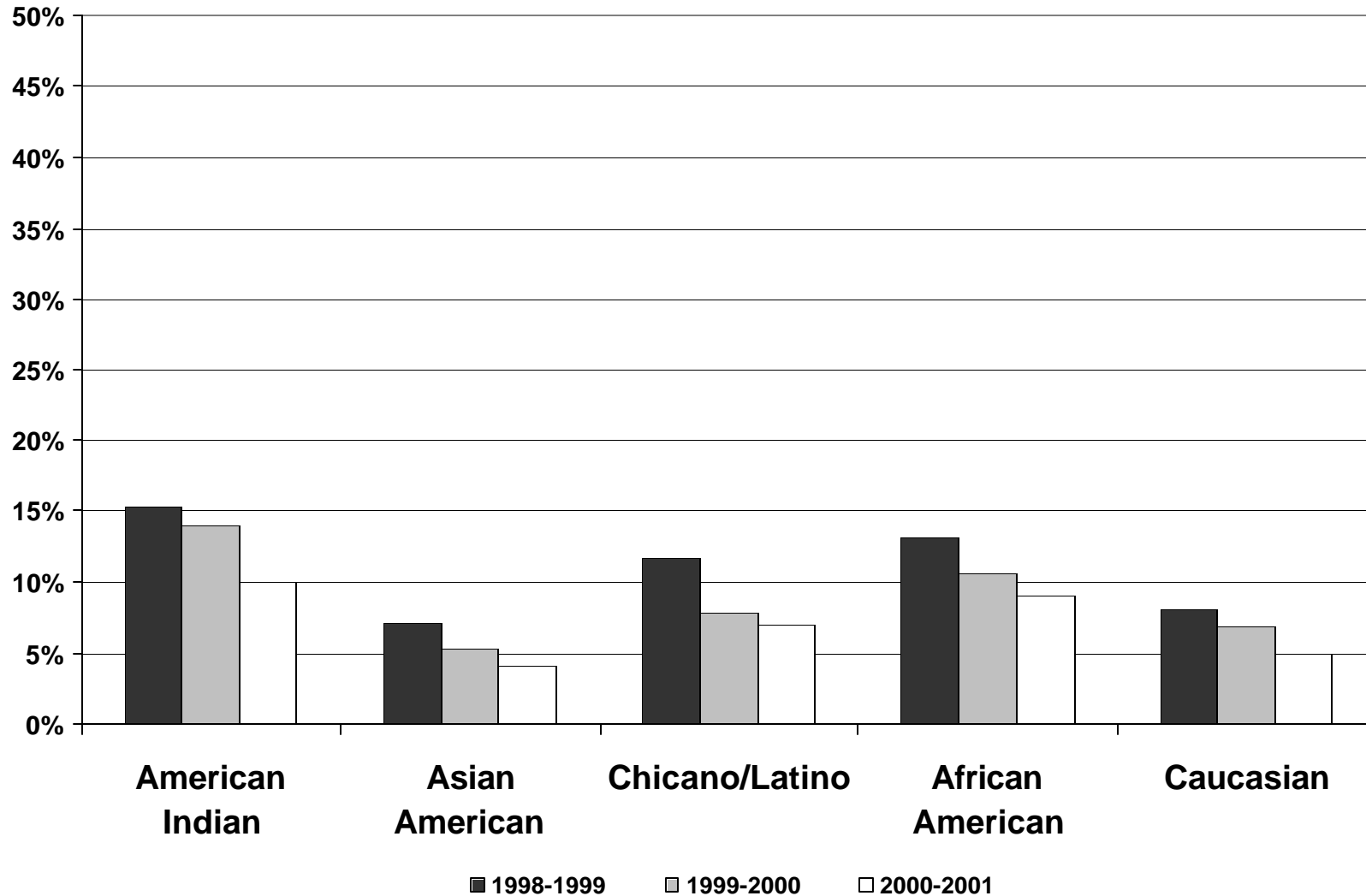
AMERICAN INDIAN FAMILY TYPES MINNEAPOLIS AND ST. PAUL

	<i>Minneapolis</i>	<i>St. Paul</i>
Married	453 (29%)	236 (36%)
Male	210 (14%)	79 (12%)
Female	881 (57%)	333 (51%)
Total	1544	648

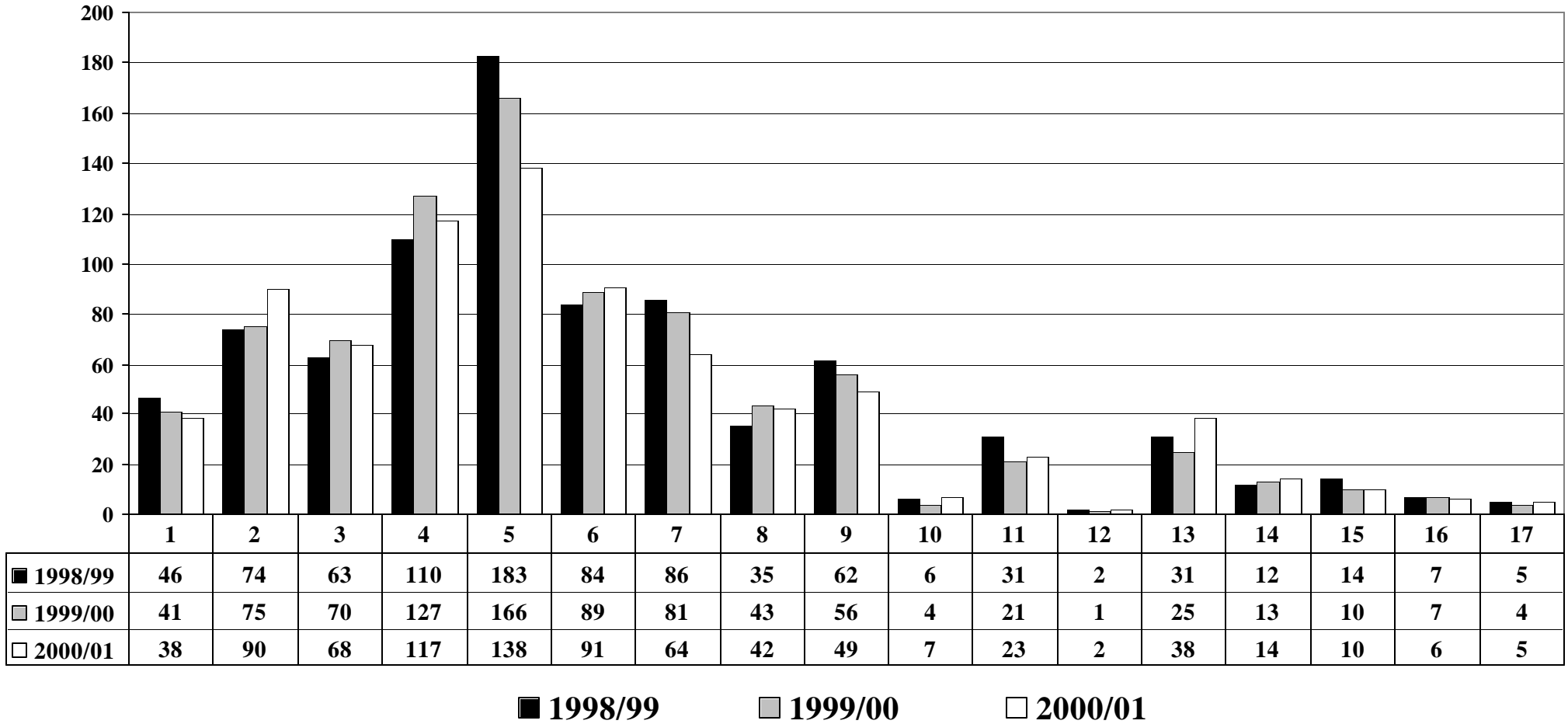
STUDENTS ABSENT 15+ DAYS ST. PAUL PUBLIC SCHOOLS



STUDENTS ABSENT 30+ DAYS ST. PAUL PUBLIC SCHOOLS



AMERICAN INDIAN STUDENTS IN ST. PAUL PUBLIC SCHOOLS By Planning District

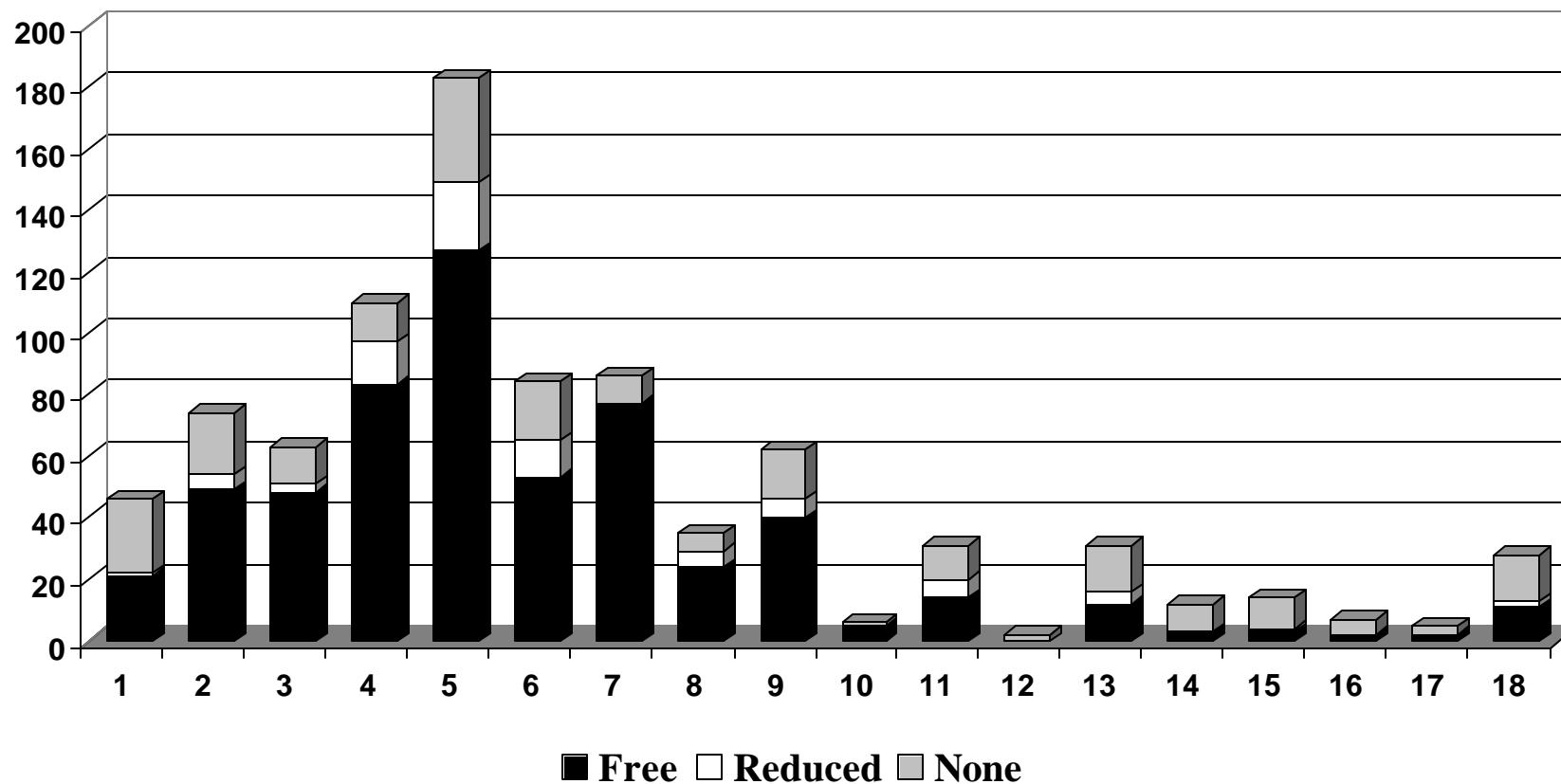


AMERICAN INDIAN STUDENTS IN FREE AND REDUCED LUNCH STATUS ST. PAUL PUBLIC SCHOOLS

	2000-2001			1999-2000		
Planning District	% F/R	Reduced only	Free only	% F/R	Reduced only	Free only
1	68%	13%	55%	73%	10%	63%
2	69%	12%	57%	67%	12%	55%
3	82%	25%	57%	81%	24%	57%
4	79%	9%	70%	81%	9%	72%
5	78%	14%	64%	76%	9%	67%
6	68%	14%	54%	73%	16%	57%
7	75%	9%	66%	89%	4%	85%
8	74%	*	*	79%	7%	72%
9	69%	0%	69%	75%	14%	61%
10	*	*	*	*	*	*
11	57%	*	*	57%	*	*
12	*	*	*	*	*	*
13	71%	0%	71%	72%	*	*
14	*	*	*	*	*	*
15	*	*	*	*	*	*
16	*	*	*	*	*	*
17	*	*	*	*	*	*
Total	71%	11%	60%	75%	12%	63%

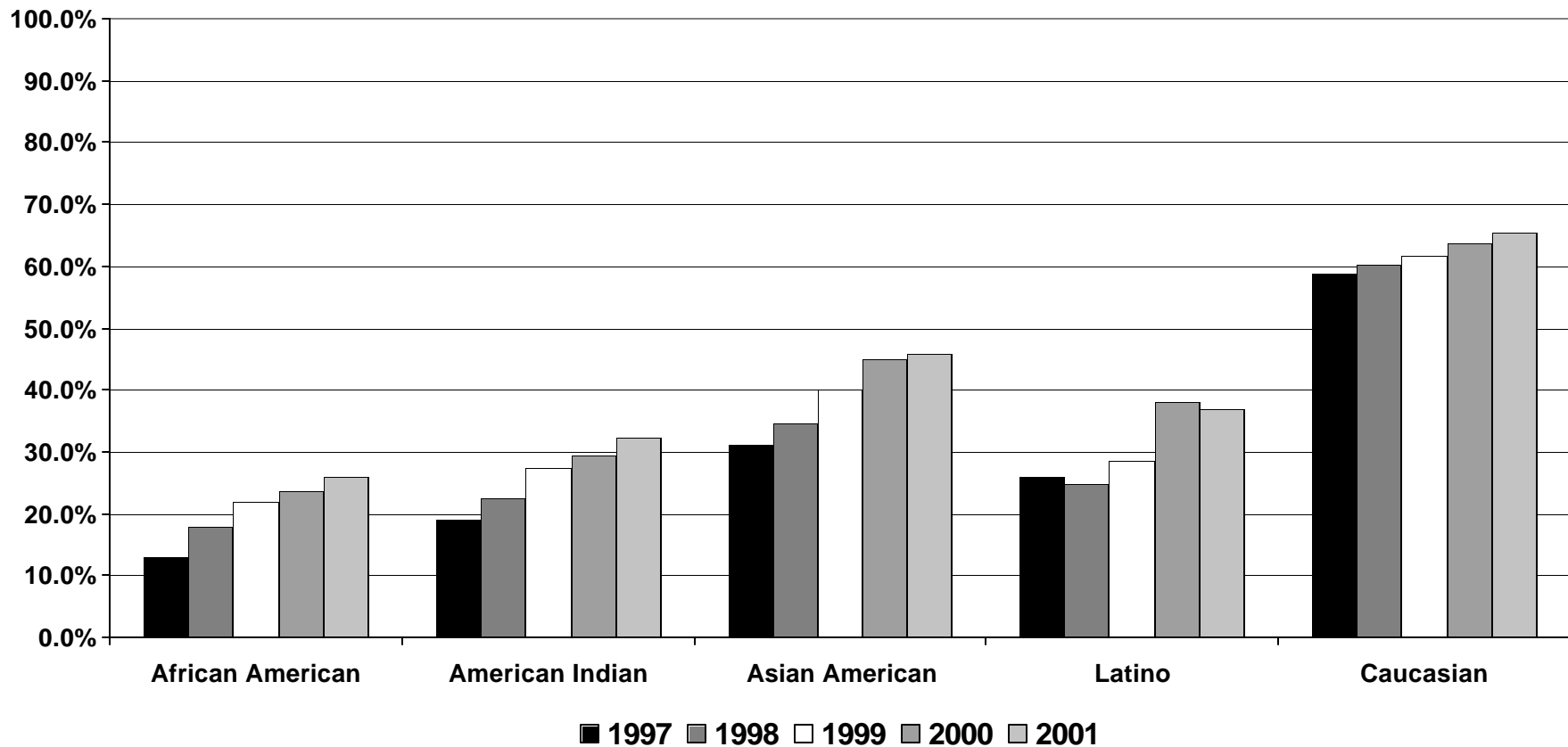
AMERICAN INDIAN FREE AND REDUCED LUNCH STATUS, ST. PAUL PUBLIC SCHOOLS, 1998-99

BY PLANNING DISTRICT



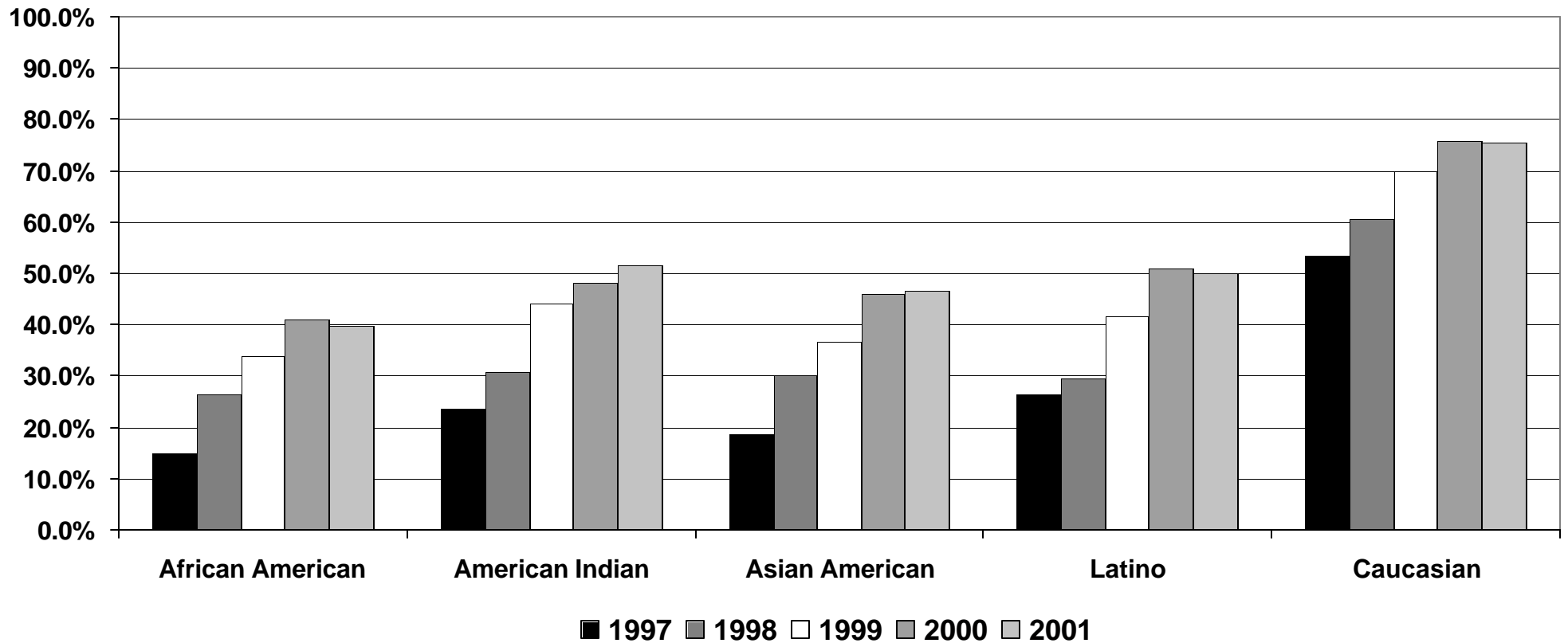
MATH BASIC STANDARDS TEST PERFORMANCE

ST. PAUL PUBLIC SCHOOLS

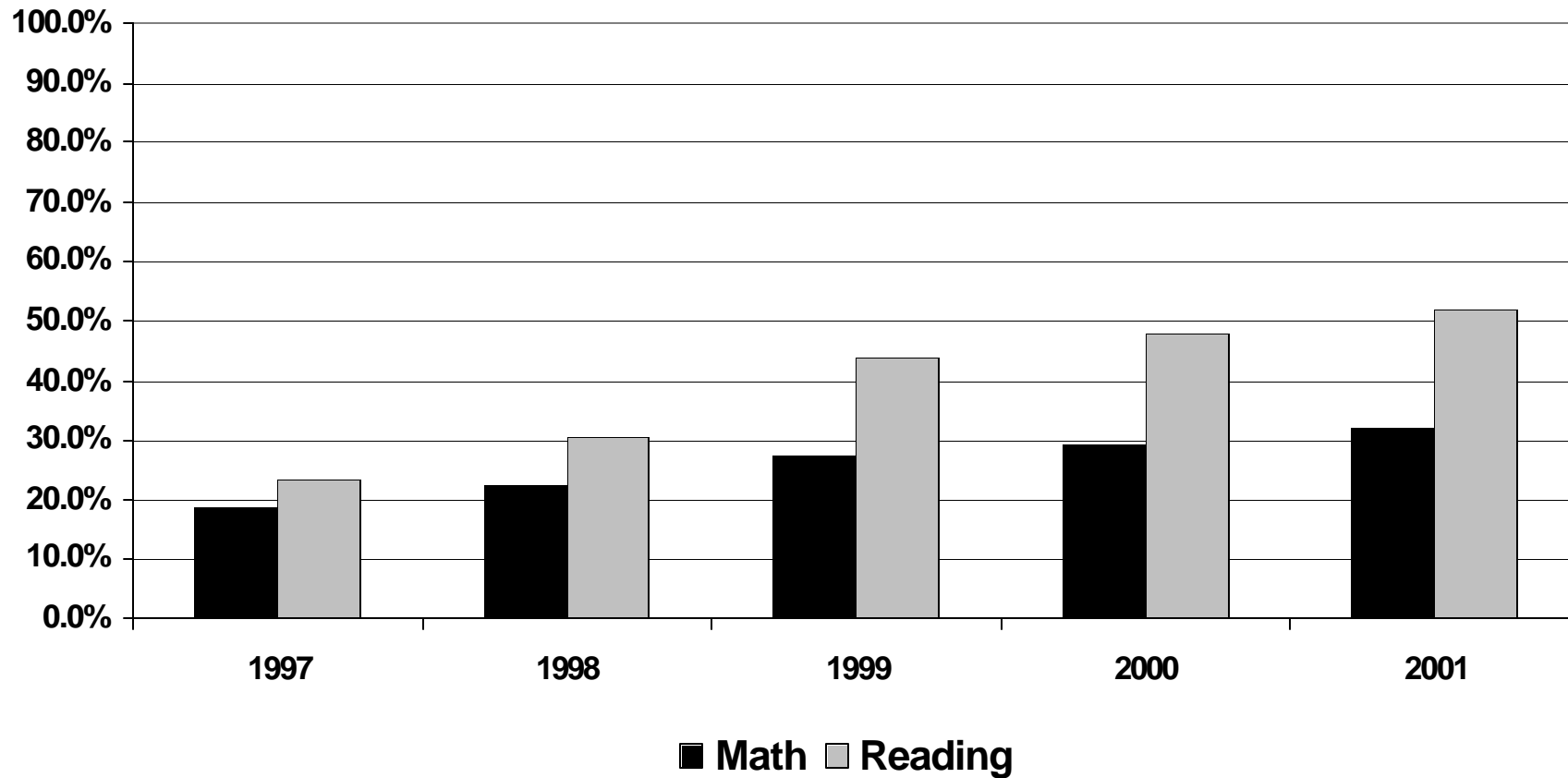


READING BASIC STANDARDS TEST PERFORMANCE

ST. PAUL PUBLIC SCHOOLS



AMERICAN INDIAN BASIC STANDARDS PERFORMANCE ST. PAUL PUBLIC SCHOOLS



Drop Out Rate Definitions

Event rates: Calculated by dividing student drop outs by the total number of 9th through 12th grade students enrolled.

Cohort rates: Calculated by following the same students from 9th through 12th grades.

MINNESOTA AMERICAN INDIAN STUDENT FOUR-YEAR ENDING STATUS

	NUMBER OF NINTH GRADE STUDENTS SERVED	GRADUATED	DROPPED OUT	CONTINUED
MINNESOTA				
CLASS OF 1997	1,089	447 <i>(41.1%)</i>	413 <i>(37.9%)</i>	229 <i>(21.0%)</i>
CLASS OF 1998	1,197	520 <i>(43.4%)</i>	424 <i>(35.4%)</i>	253 <i>(21.2%)</i>
CLASS OF 1999	1,252	532 <i>(42.5%)</i>	435 <i>(34.7%)</i>	285 <i>(22.8%)</i>
CLASS OF 2000	1,243	529 <i>(42.6%)</i>	428 <i>(34.4%)</i>	286 <i>(23.0%)</i>

Percentages may not sum to 100 due to rounding.

Source: Minnesota Department of Children, Families & Learning
<http://children.state.mn.us/datactr/compstu/compstu1.htm>

Note: These numbers are drawn from the Department of Children, Families & Learning Completion Studies. These studies track individual ninth-grade students through the next four years of their education. Thus, for example, 34.4% of all Class of 2000 American Indian students who began school in the State of Minnesota as a ninth-grader in 1996/97 (and whose last record of attendance was in Minnesota) dropped out. This data includes those students whose last record of attendance was in a Minnesota school district, and excludes those students whose school district was in another state.

TWIN CITIES AMERICAN INDIAN STUDENT FOUR-YEAR ENDING STATUS

	NUMBER OF NINTH GRADE STUDENTS SERVED	GRADUATED	DROPPED OUT	CONTINUED EDUCATION THE FOLLOWING YEAR
MINNEAPOLIS				
CLASS OF 1997	151	20 (13.2%)	111 (73.6%)	20 (13.2%)
CLASS OF 1998	163	21 (12.9%)	109 (66.9%)	33 (20.2%)
CLASS OF 1999	141	24 (17.0%)	87 (61.7%)	30 (21.3%)
CLASS OF 2000	139	19 (13.7%)	94 (67.6%)	26 (18.7%)
ST. PAUL				
CLASS OF 1997	41	12 (29.3%)	20 (48.8%)	9 (22.0%)
CLASS OF 1998	47	19 (40.4%)	17 (36.2%)	11 (23.4%)
CLASS OF 1999	37	13 (35.1%)	13 (35.1%)	11 (29.7%)
CLASS OF 2000	33	15 (45.5%)	7 (21.2%)	11 (33.3%)

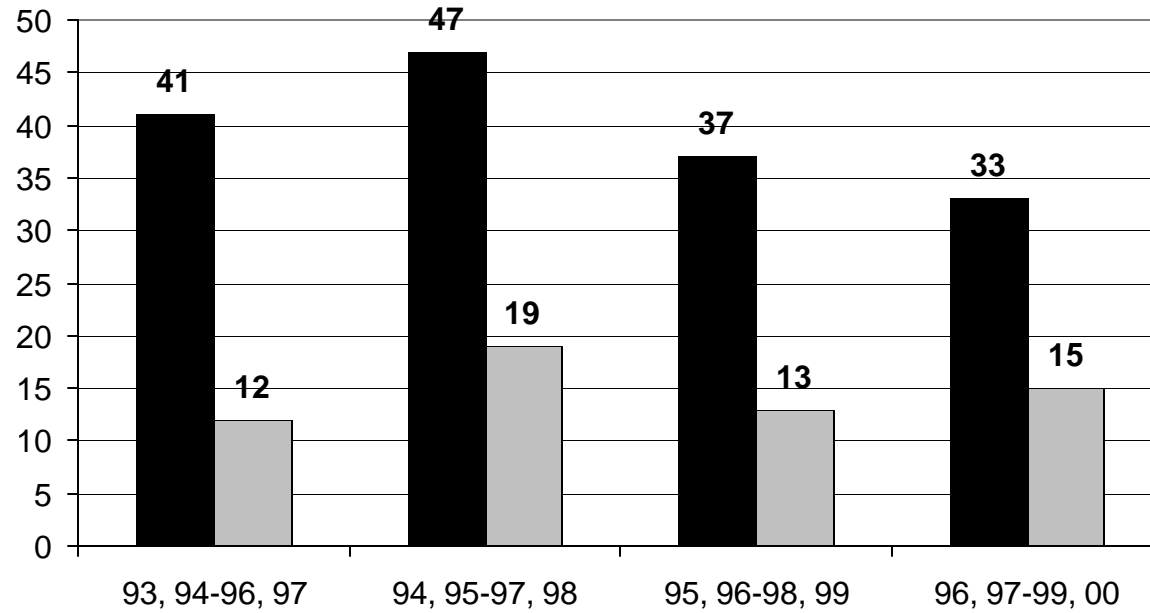
Percentages may not sum to 100 due to rounding.

Source: Minnesota Department of Children, Families & Learning
<http://children.state.mn.us/datactr/compstu/compstu1.htm>

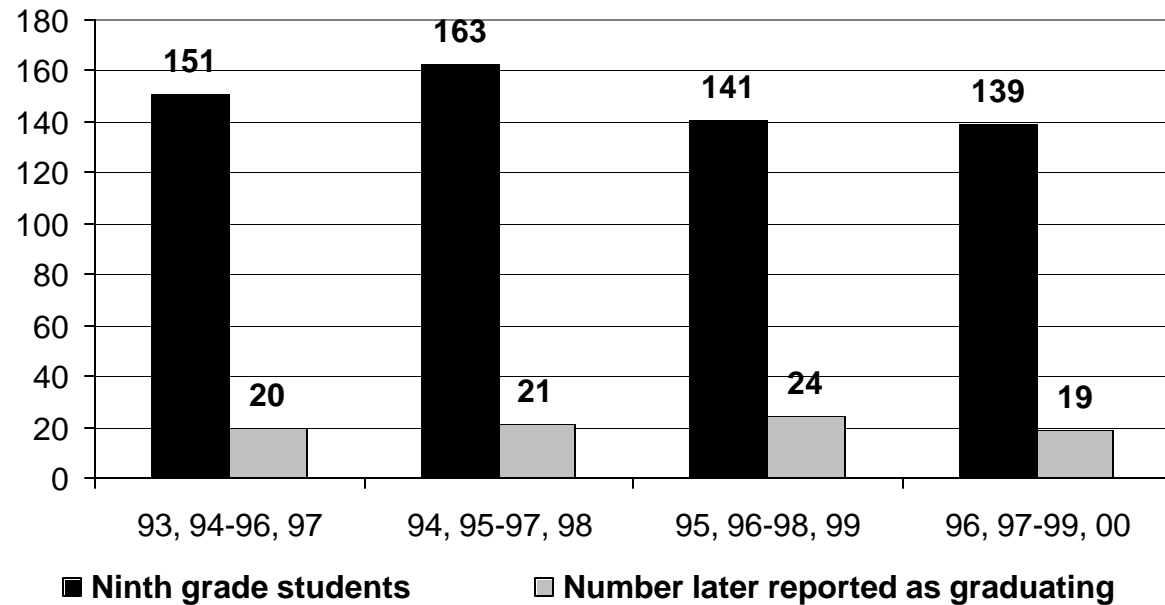
Note: These numbers are drawn from the Department of Children, Families & Learning Completion Studies. These studies track individual ninth-grade students through the next four years of their education. Thus, for example, 67.6% of all Class of 2000 American Indian students who began school in the Minneapolis School District as a ninth-grader in 1996/97 (and whose last record of attendance was in the Minneapolis school district) dropped out. This data does not include any students whose last record of attendance was in another school district.

AMERICAN INDIAN COHORT GRADUATION RATES

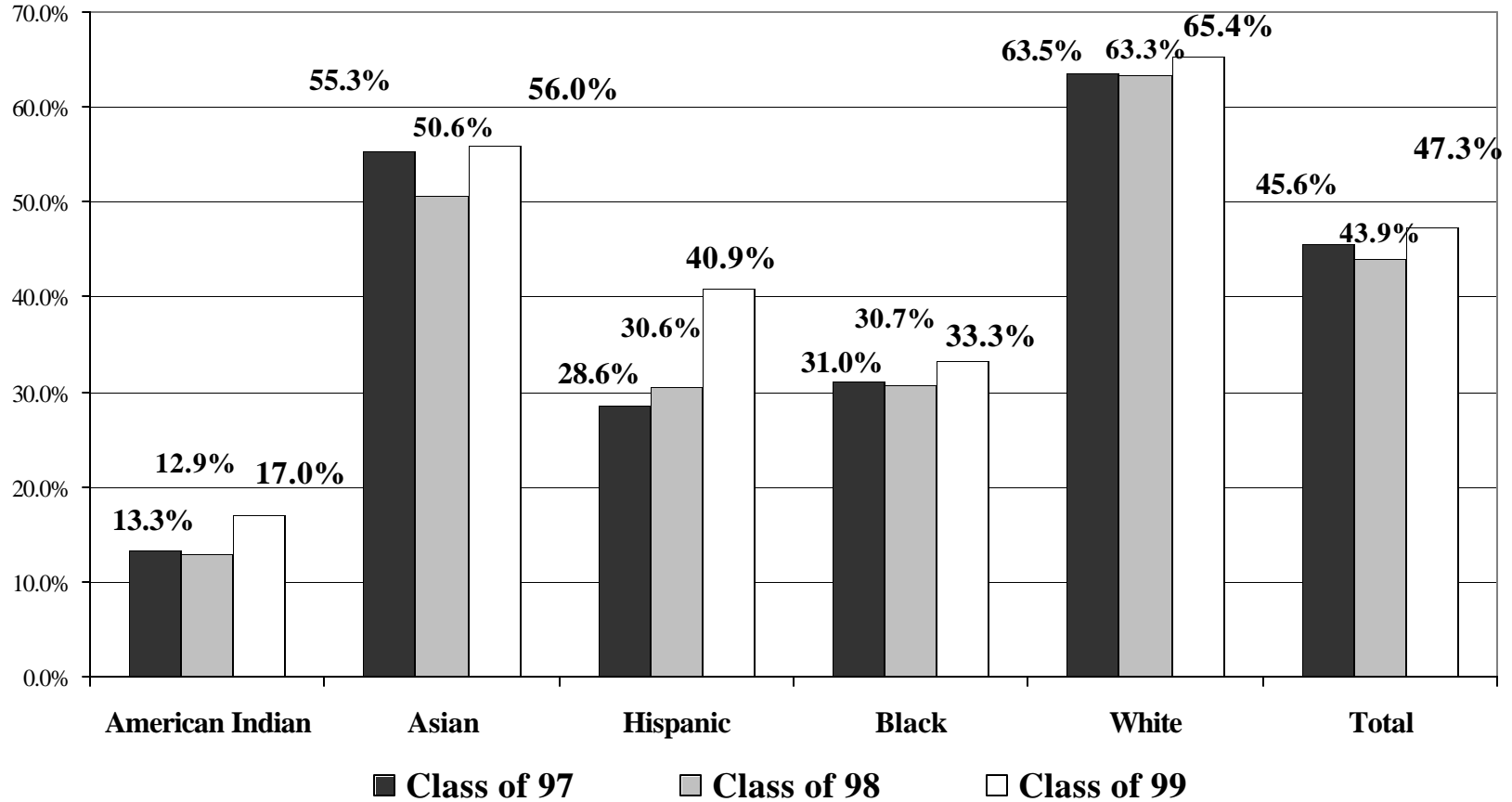
ST. PAUL



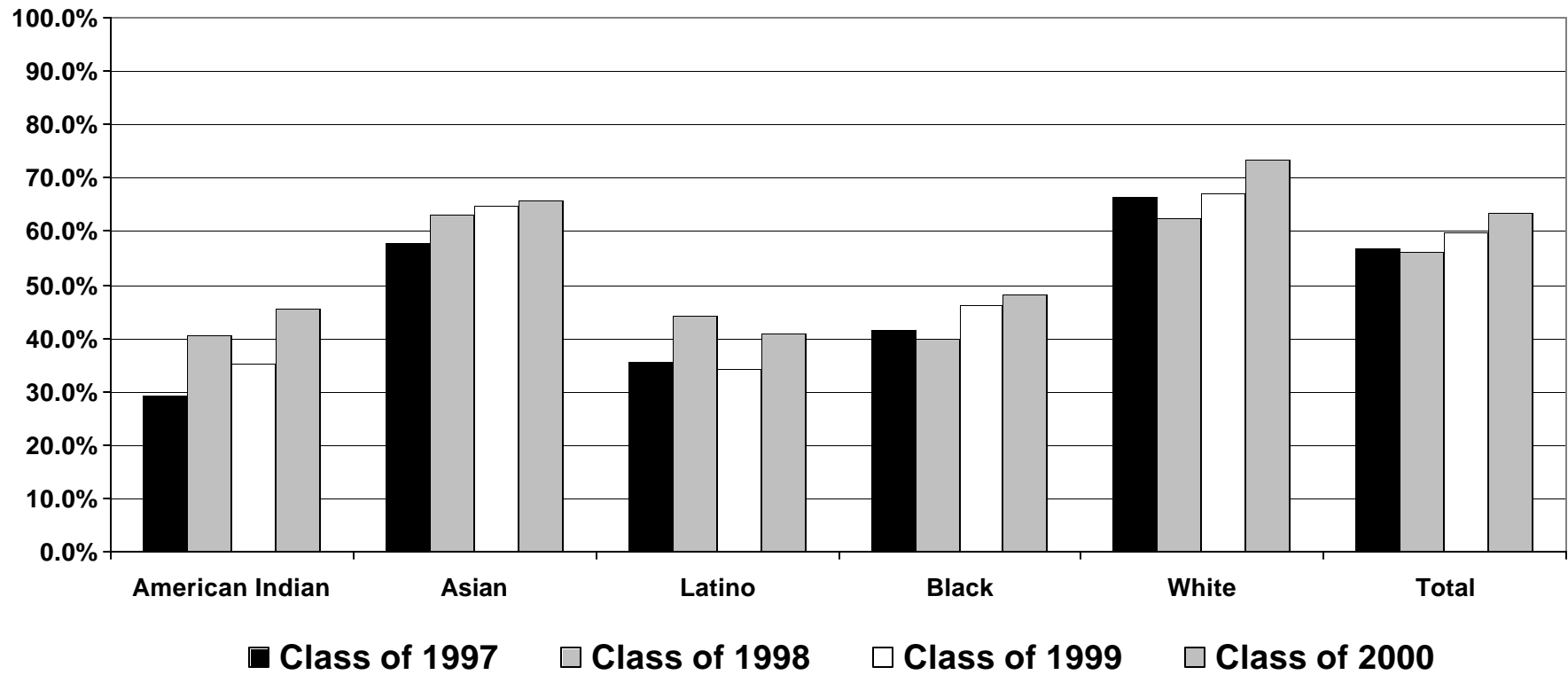
MINNEAPOLIS



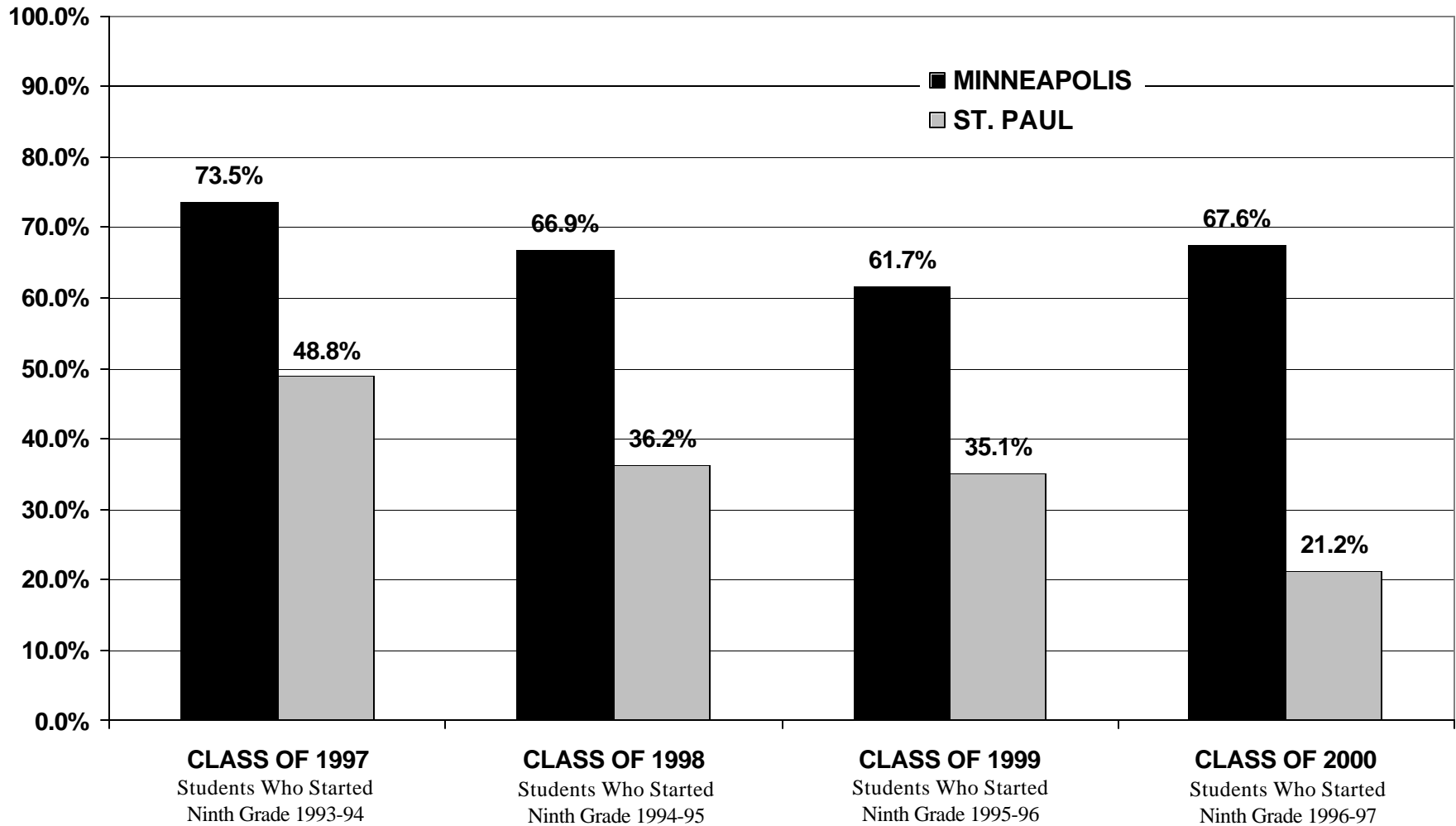
MINNEAPOLIS COHORT GRADUATION RATES



ST. PAUL COHORT GRADUATION RATES



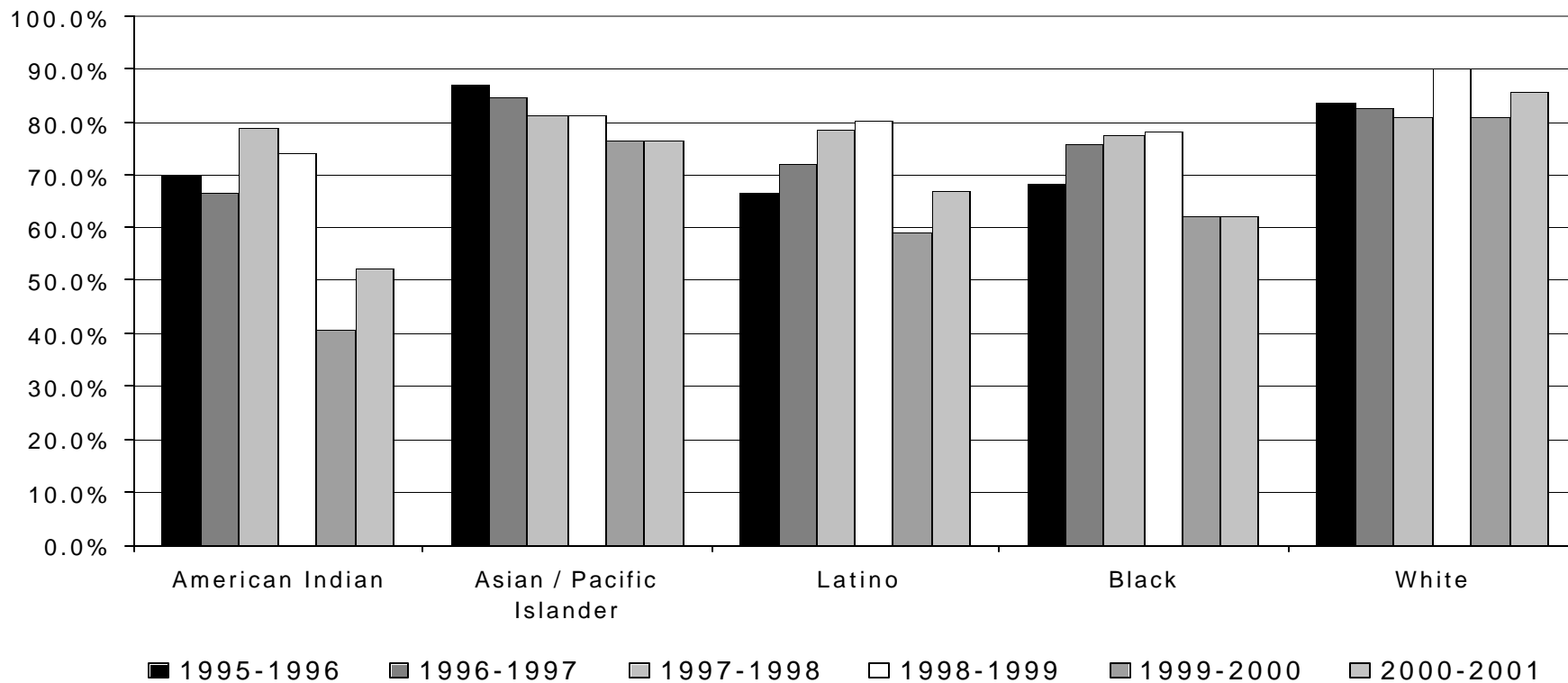
MINNEAPOLIS AND ST. PAUL AMERICAN INDIAN COHORT DROP OUT RATE*



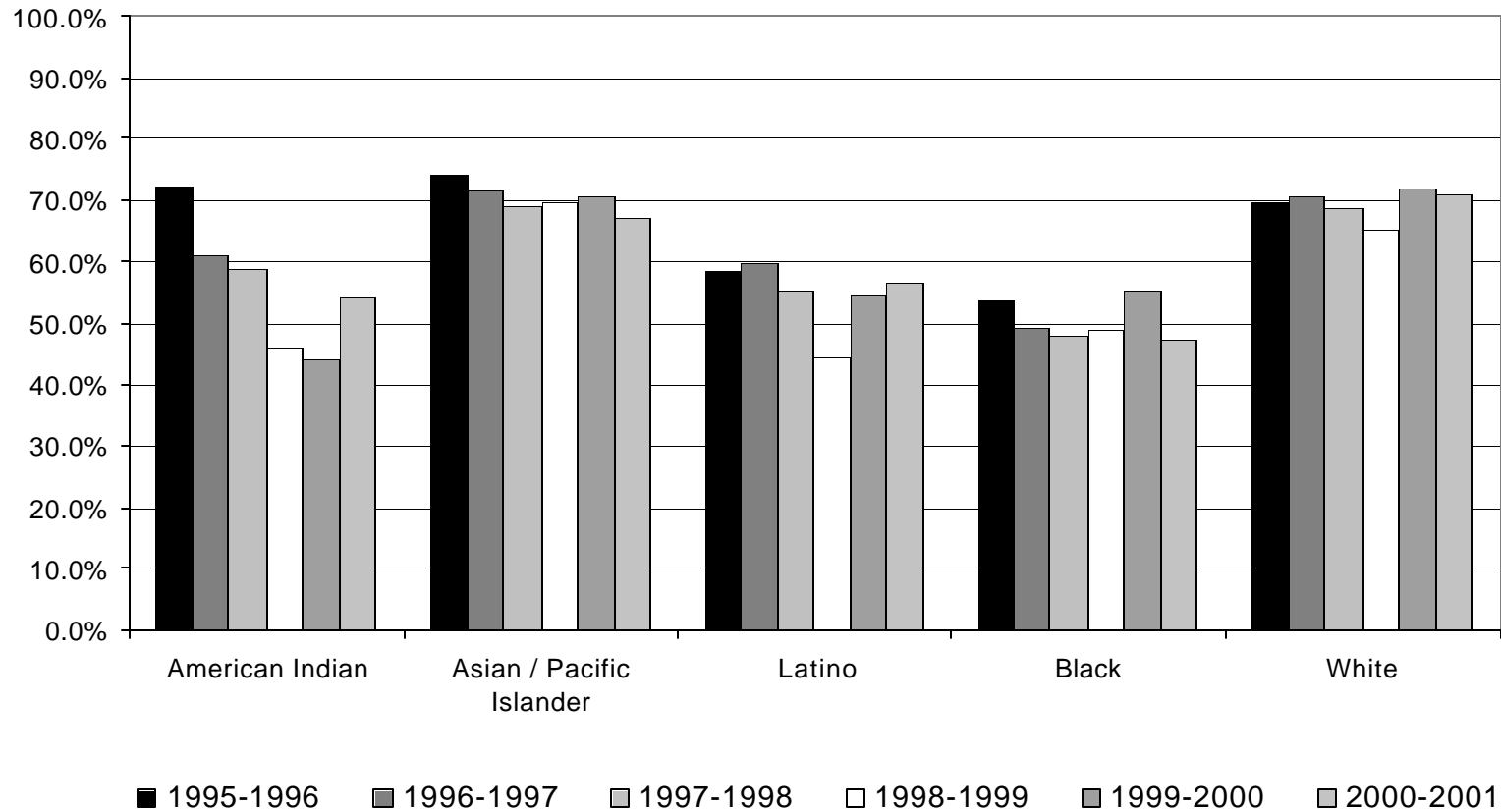
Source: Minnesota Department of Children, Families & Learning
<http://cfl.state.mn.us/datactr>

* These numbers are drawn from the Department of Children, Families & Learning Completion Studies. These studies track individual ninth-grade students through the next four years of their education. Thus, for example, 67.6% of all Class of 2000 American Indian students who began school in the Minneapolis School District as a ninth-grader in 1996/97 (and whose last record of attendance was in the Minneapolis school district) dropped out. This data does not include any students whose last record of attendance was in another school district.

MINNEAPOLIS PUBLIC SCHOOL 12TH GRADE EVENT (1-YEAR) GRADUATION RATE



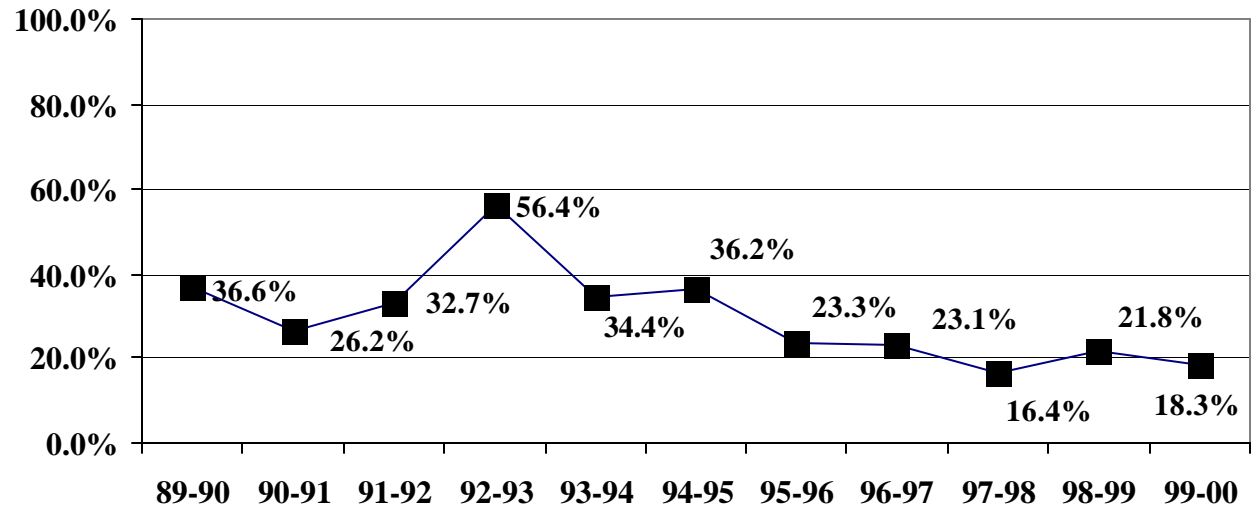
ST. PAUL PUBLIC SCHOOL 12TH GRADE EVENT (1-YEAR) GRADUATION RATE



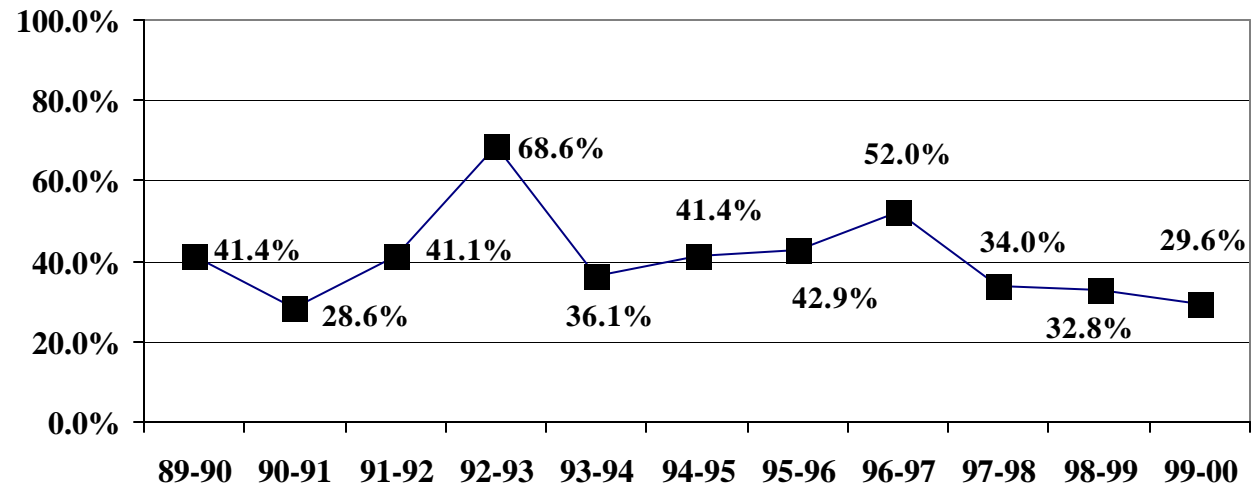
AMERICAN INDIAN DROP OUT RATES

EVENT DROP OUT RATE*

**ST.
PAUL**



MINNEAPOLIS



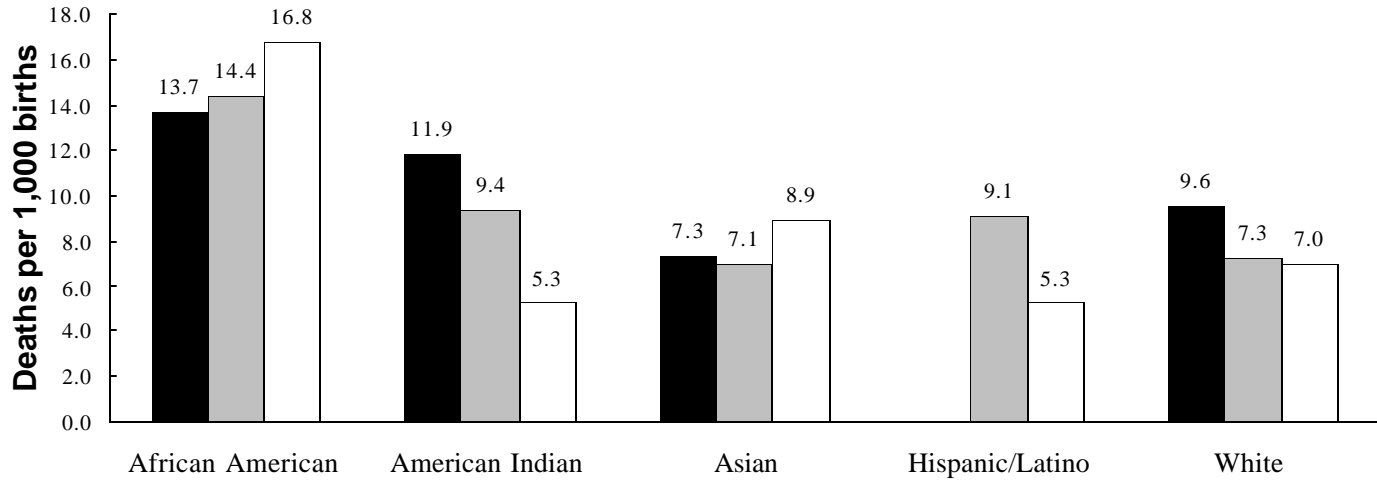
Source: Minnesota Department of Children, Families & Learning
<http://cfl.state.mn.us/datactr/drops/index.htm>

* Event drop out rates are based on the status of students during a given school year. Event drop out rates are calculated as follows: Total Number of American Indian Dropouts (Grades 9-12) divided by Total Number of American Indian Students (Grades 9-12).

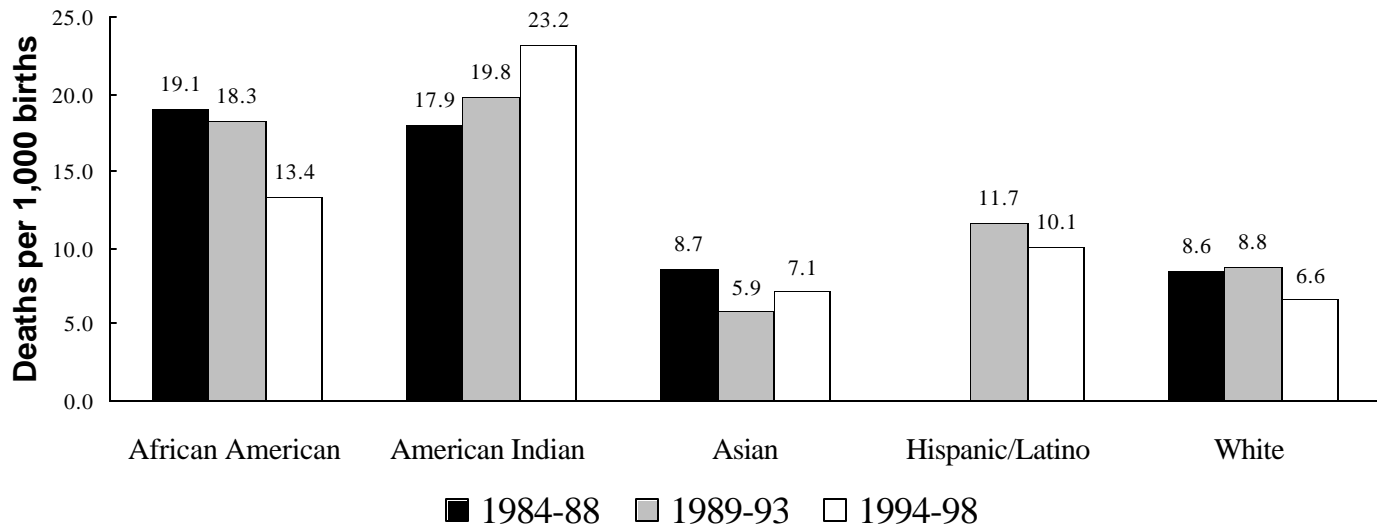
INFANT MORTALITY RATES

BY POPULATION GROUP

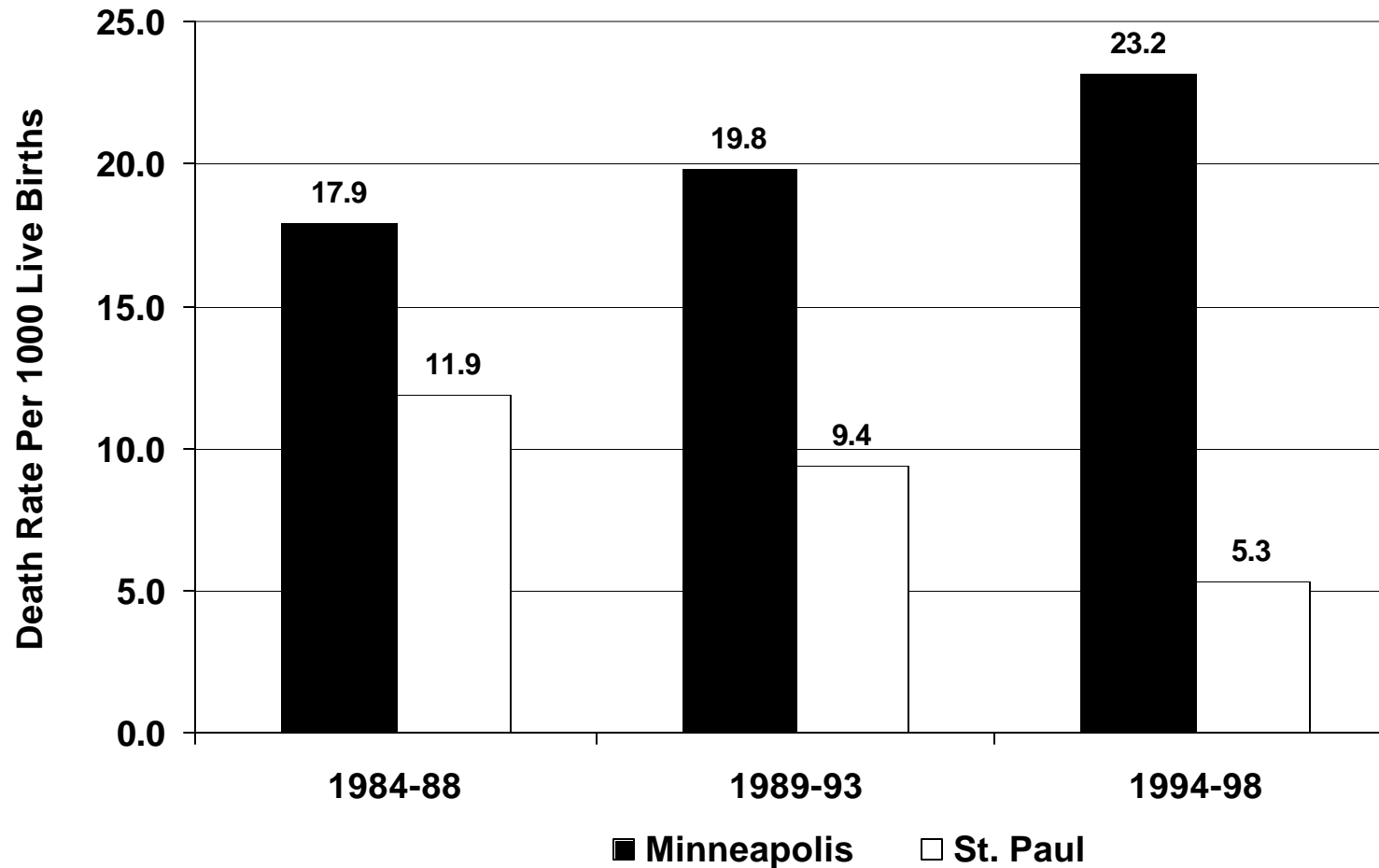
**ST
PAUL**



MINNEAPOLIS



AMERICAN INDIAN INFANT MORTALITY RATES IN MINNEAPOLIS AND ST. PAUL



MINNESOTA OUT-OF-HOME PLACEMENTS

Ethnicity of Minnesota Children in Out-of-Home Care in 1992-1997

	1992	1993	1994	1995	1996	1997	1998
African American	3,459	3,860	4,007	3,685	3,492	4,046	
American Indian	2,130	2,108	2,176	2,034	1,995	2,104	2,201
Asian/Pacific Islander	304	316	292	308	285	345	
Hispanic	412	562	581	636	644	617	
White	11,337	11,489	11,658	11,308	10,701	11,030	
Not Reported	454	338	922	521	391	-	
<i>Total</i>	<i>18,096</i>	<i>18,673</i>	<i>19,636</i>	<i>18,492</i>	<i>17,508</i>	<i>18,142</i>	<i>18,821</i>

Percent Distribution Minnesota Children in Out-of-Home Care, 1992- 1997

	1992	1993	1994	1995	1996	1997	1998
African American	19.1%	20.7%	20.4%	19.9%	19.9%	22.3%	
American Indian	11.8%	11.3%	11.1%	11.0%	11.4%	11.6%	11.7%
Asian/Pacific Islander	1.7%	1.7%	1.5%	1.7%	1.6%	1.9%	
Hispanic	2.3%	3.0%	3.0%	3.4%	3.7%	3.4%	
White	62.6%	61.5%	59.4%	61.2%	61.1%	60.8%	
Not Reported	2.5%	1.8%	4.7%	2.8%	2.2%	0.0%	
<i>Total</i>	<i>100%</i>	<i>100%</i>	<i>100%</i>	<i>100%</i>	<i>100%</i>	<i>100%</i>	<i>100%</i>

Data tables here are almost exact replicas of p. 8 of report cited below.

Source: Bulletin #98-68-8, Children in Out-of-Home Care: A 1996 Minnesota Report by Race and Heritage,

Minnesota Department of Human Services, Community Services Division and the Family and Children's Services Division, November 1998, p.8

**Population is from the State Demographic Center at Minnesota State Planning and includes the population of children through 19 years old.

In the Minnesota population data, Hispanic includes only White Hispanic children; children in out-of-home care who are of Hispanic heritage may be of any race.

PERCENT DISTRIBUTION OF MINNESOTA CHILDREN IN OUT-OF-HOME CARE, 1992-1997

	1992	1993	1994	1995	1996	1997	1997 Pop. MN Children**
African American	19.1%	20.7%	20.4%	19.9%	19.9%	22.3%	4.1%
American Indian	11.8%	11.3%	11.1%	11.0%	11.4%	11.6%	1.9%
Asian/Pacific Islander	1.7%	1.7%	1.5%	1.7%	1.6%	1.9%	4.0%
Hispanic	2.3%	3.0%	3.0%	3.4%	3.7%	3.4%	2.2%
White	62.6%	61.5%	59.4%	61.2%	61.1%	60.8%	87.8%

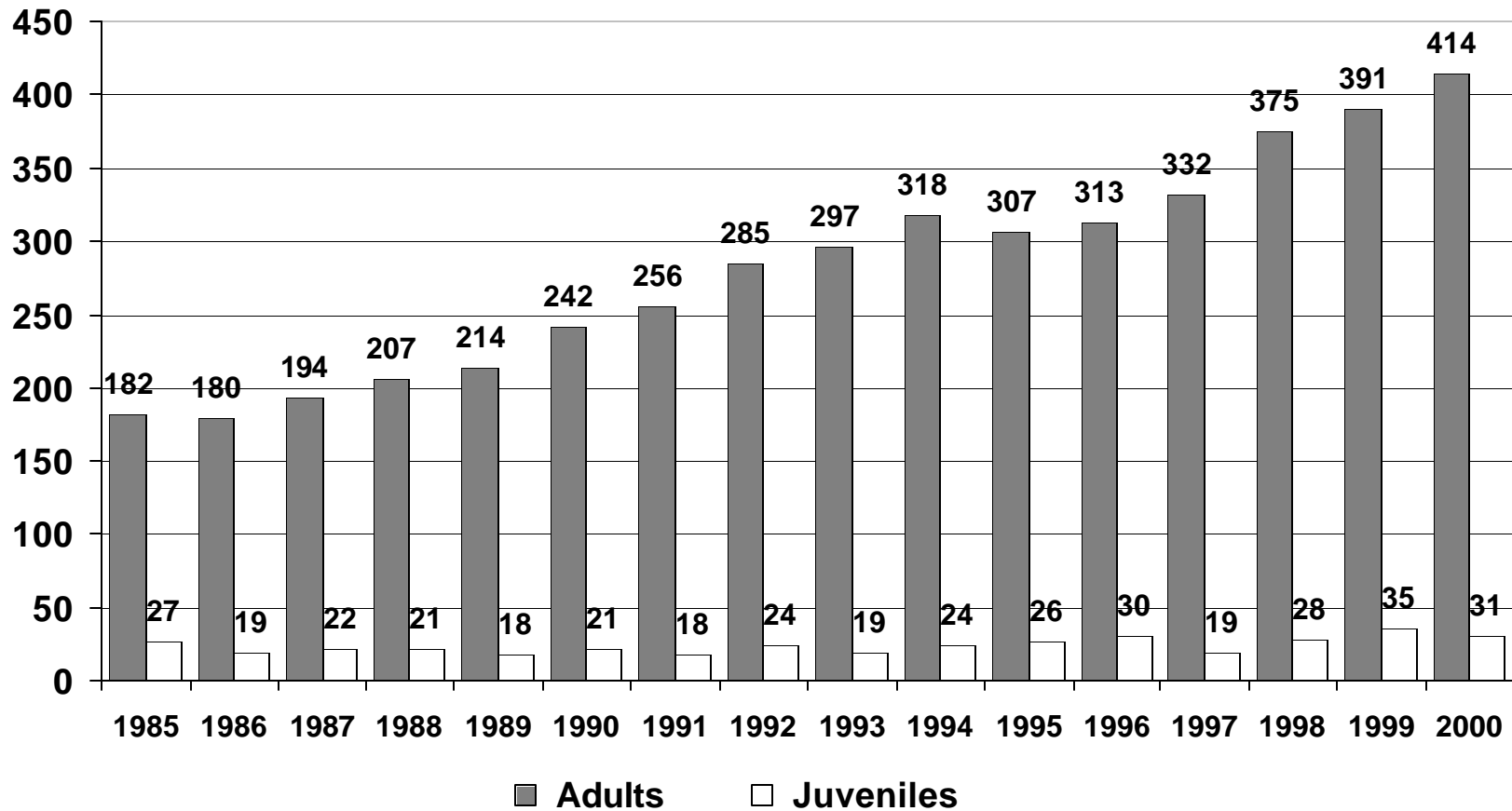
Minnesota Placements in Corrections Home/Facility in 1996			
	Placements	% of Total Placements in Corrections	% of Population
African American	151	7%	4%
American Indian	220	10%	2%
Asian/Pacific Islander	50	2%	4%
Hispanic	90	4%	2%
White	1633	74%	88%
Not Reported	50	2%	0%
Total	2194	100%	100%

These numbers are based on placements, not children.

Data tables here are selected from Bulletin #98-68-8, Children in Out-of-Home Care; A 1996 Minnesota Report by Race and Heritage, Minnesota Department of Human Services, Community Services Division and the Family and Children's Services Division, November 1998, p.8.
 **Population is from the State Demographic Center at Minnesota State Planning and includes the population of children through 19 years old.

In the Minnesota population data, Hispanic includes only White Hispanic children; children in out-of-home care who are of Hispanic heritage may be of any race.

AMERICAN INDIANS IN MINNESOTA CORRECTIONAL FACILITIES

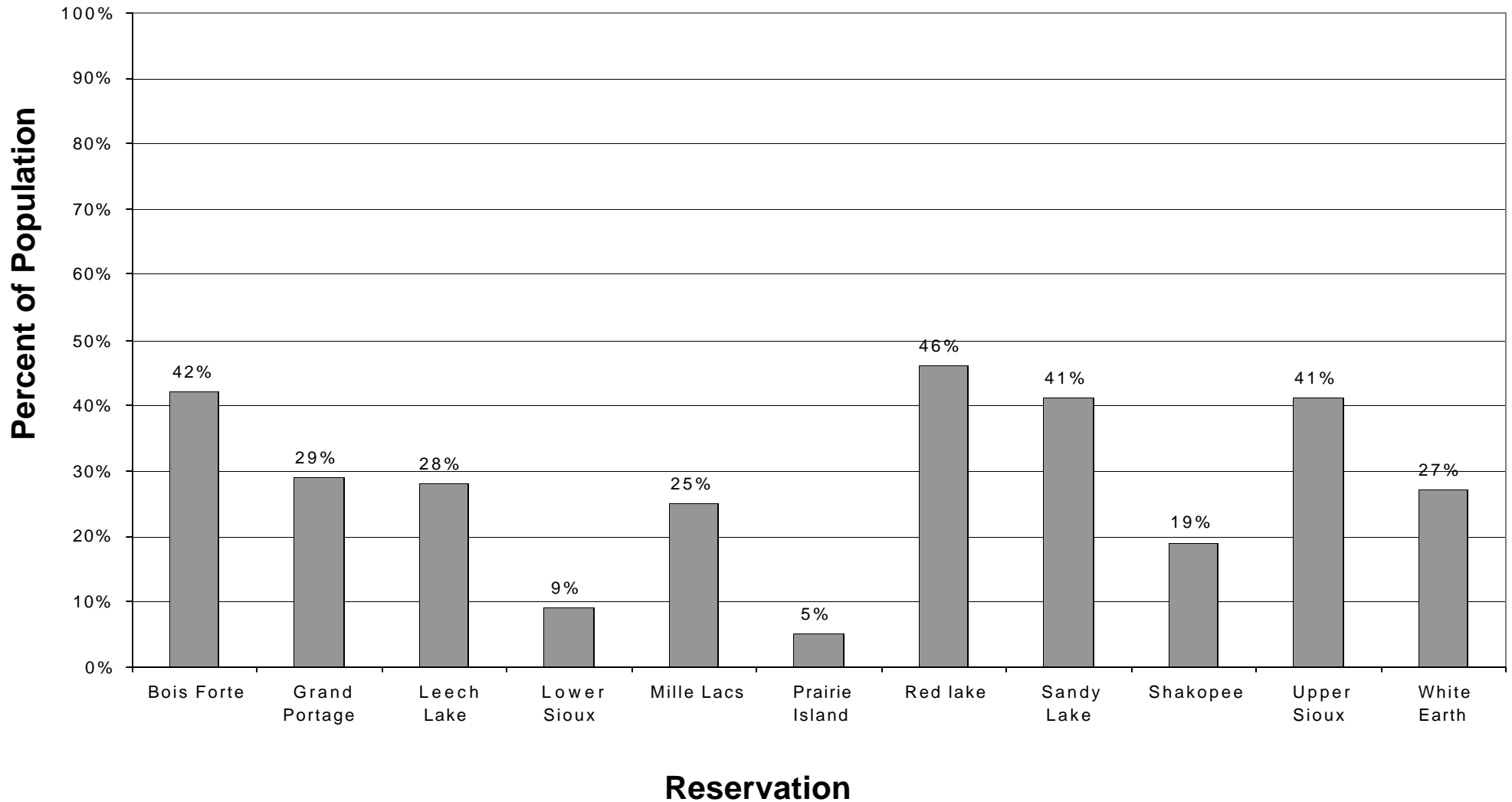


Source: Minnesota Department of Corrections
<http://www.corr.state.mn.us>

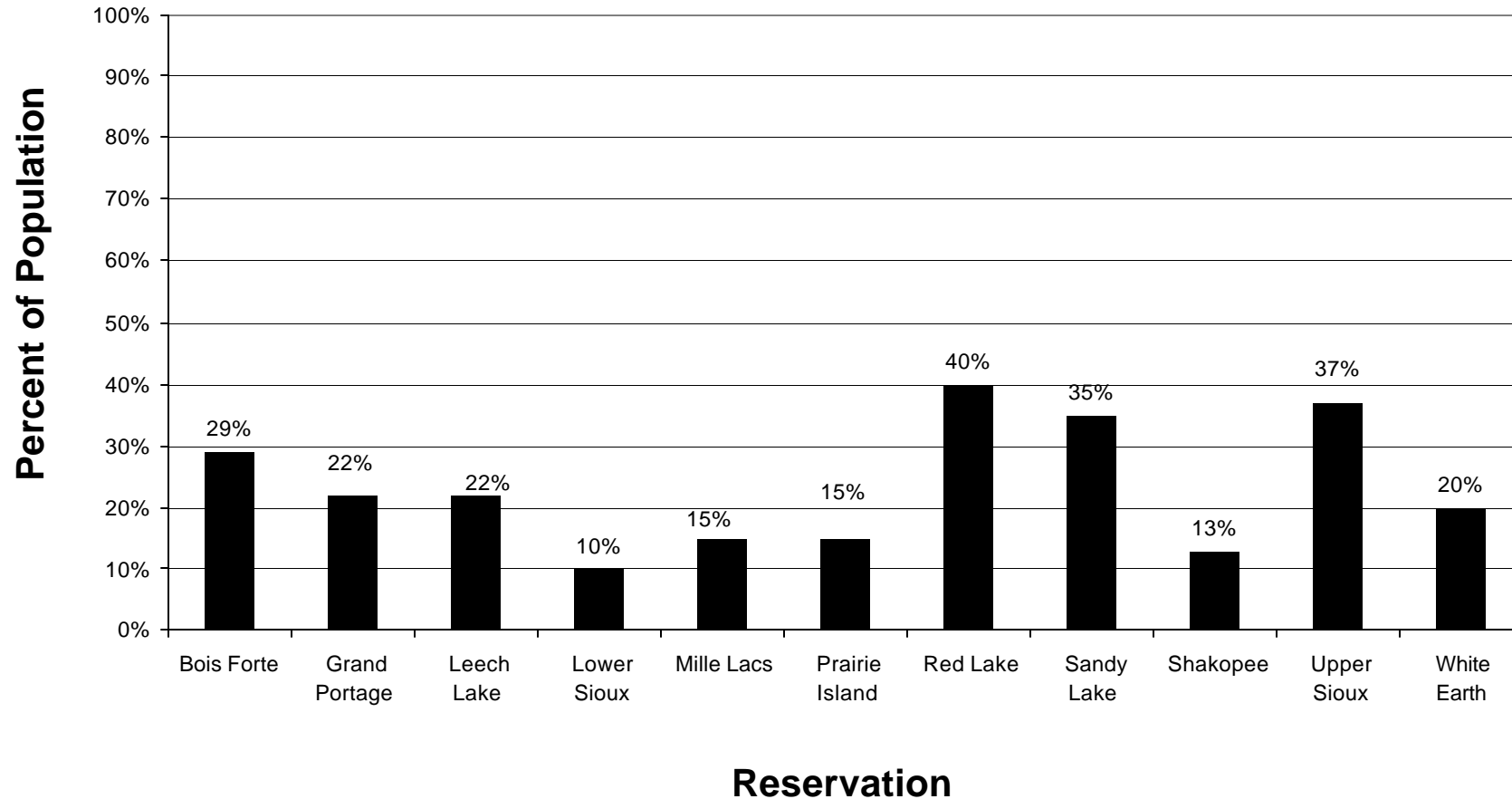
Note: Numbers are based on correctional population on January 1 of each year and data does not include county facilities.

American Indian Policy Center

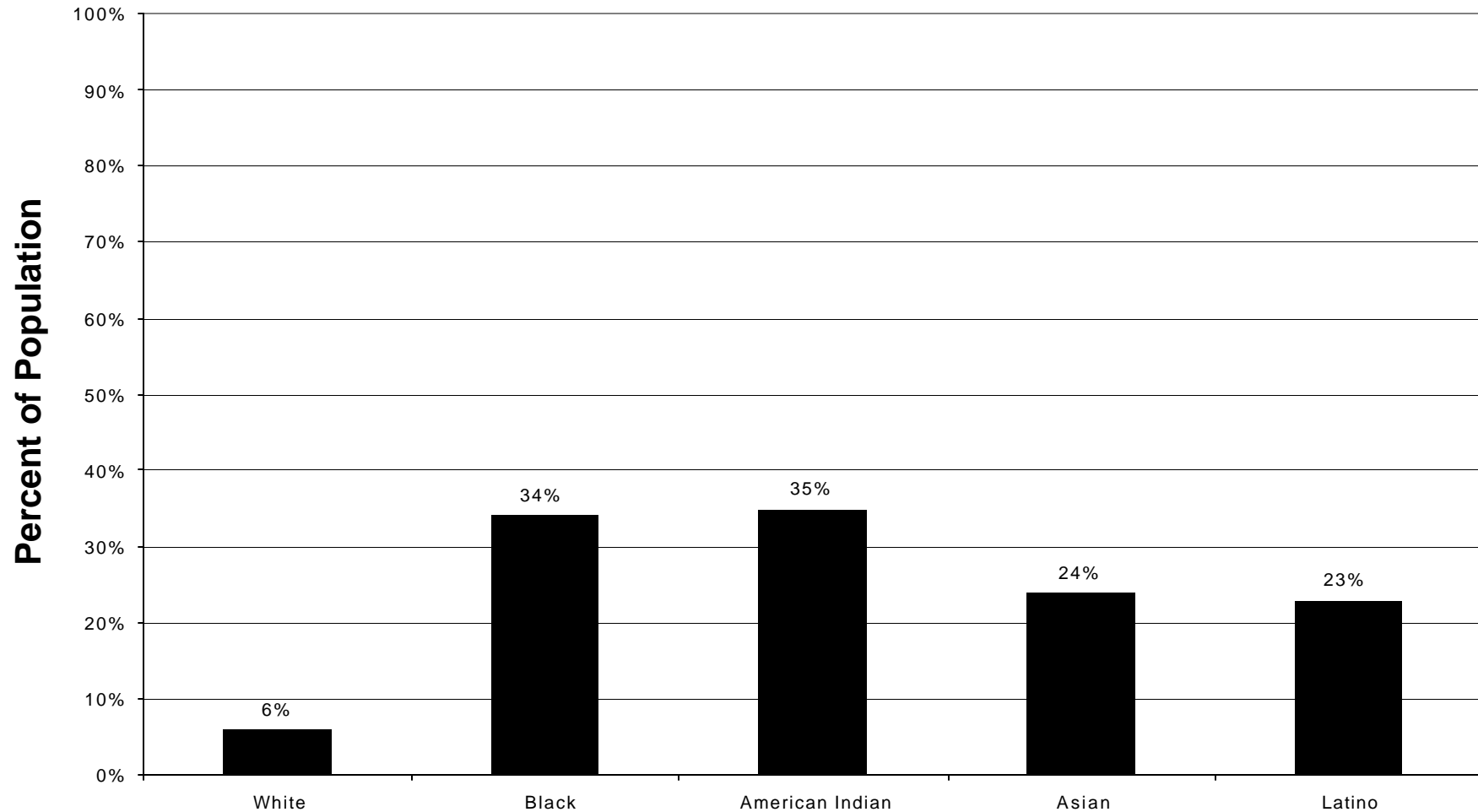
PERCENT OF AMERICAN INDIAN CHILDREN (AGE 0 - 17) ON RESERVATIONS IN MN BELOW POVERTY (1999)



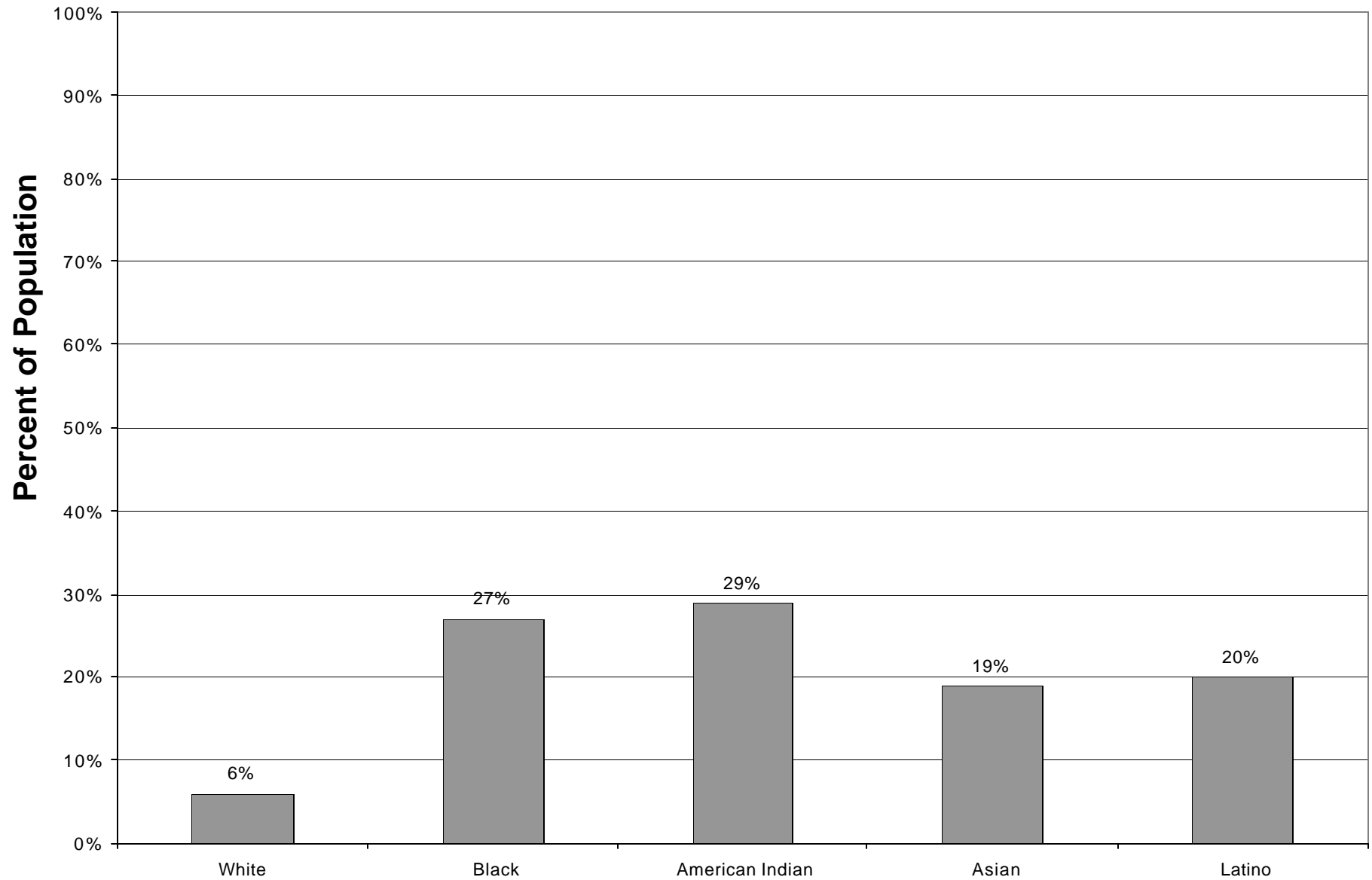
PERCENT OF AMERICAN INDIAN POPULATION ON RESERVATIONS IN MN BELOW POVERTY (1999)



PERCENT OF CHILDREN (AGE 0-17) IN MN LIVING BELOW POVERTY (1999)



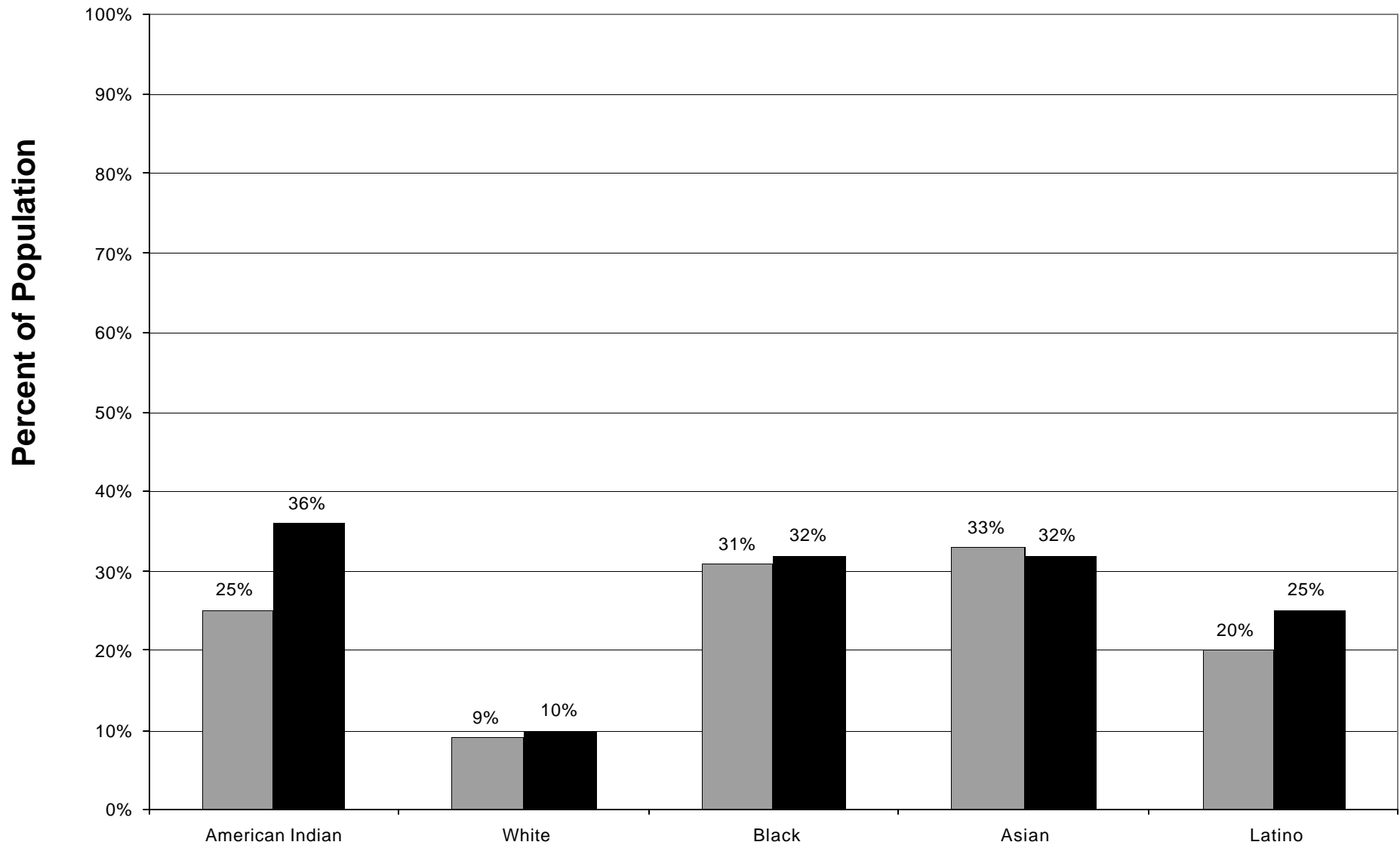
PERCENT OF POPULATION IN MINNESOTA BELOW POVERTY (1999)



Source: U.S. Census 2000
www.census.gov

American Indian Policy Center

PERCENT OF POPULATION IN MINNEAPOLIS AND ST. PAUL BELOW POVERTY (1999)

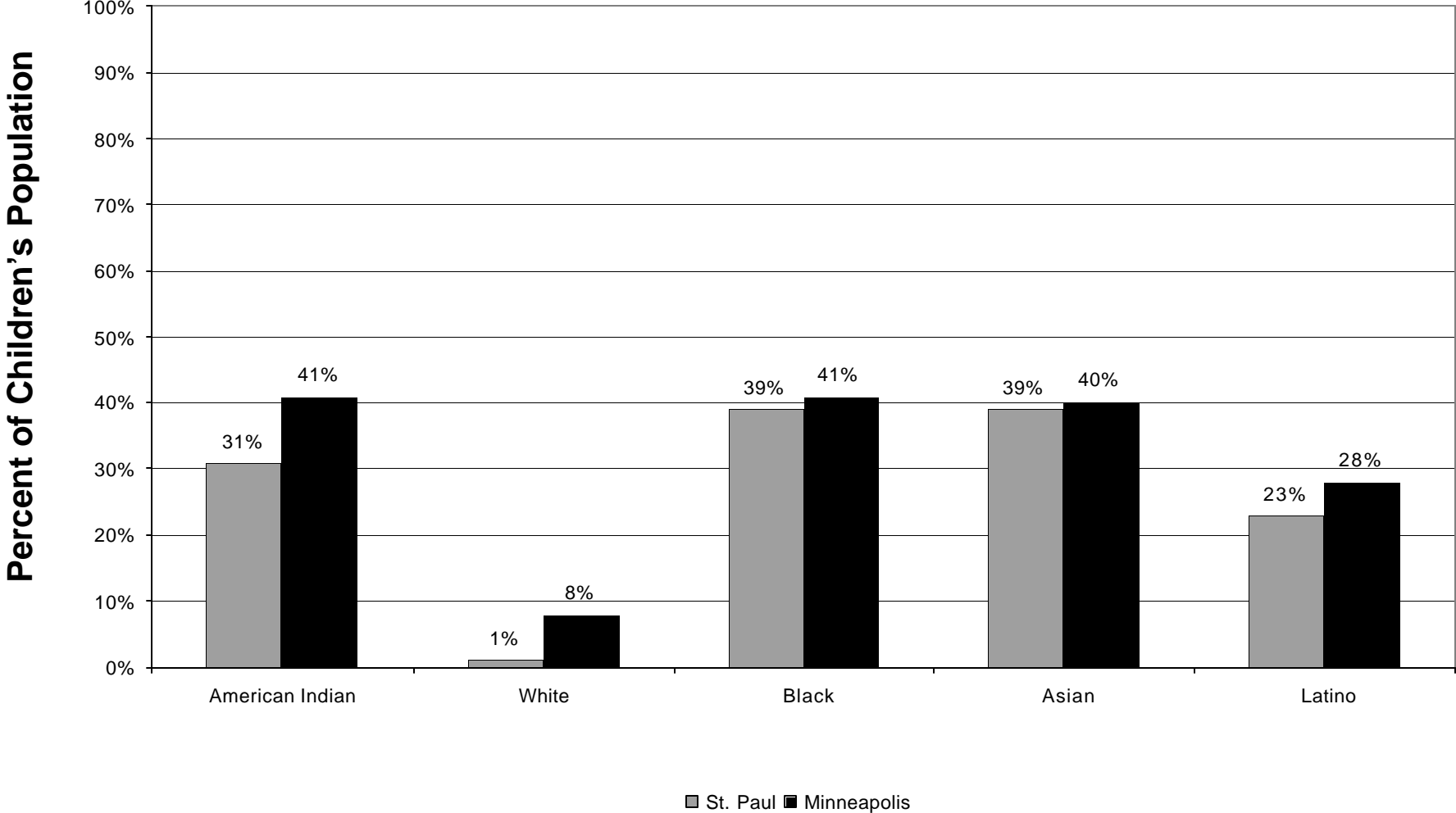


Source: U.S. Census 2000
www.census.gov

■ St. Paul ■ Minneapolis

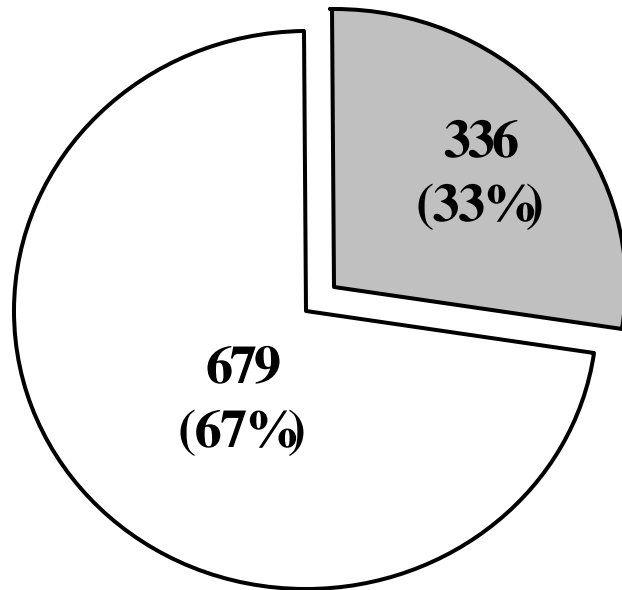
American Indian Policy Center

PERCENT OF CHILDREN (AGE 0-17) IN MINNEAPOLIS AND ST. PAUL BELOW POVERTY (1999)

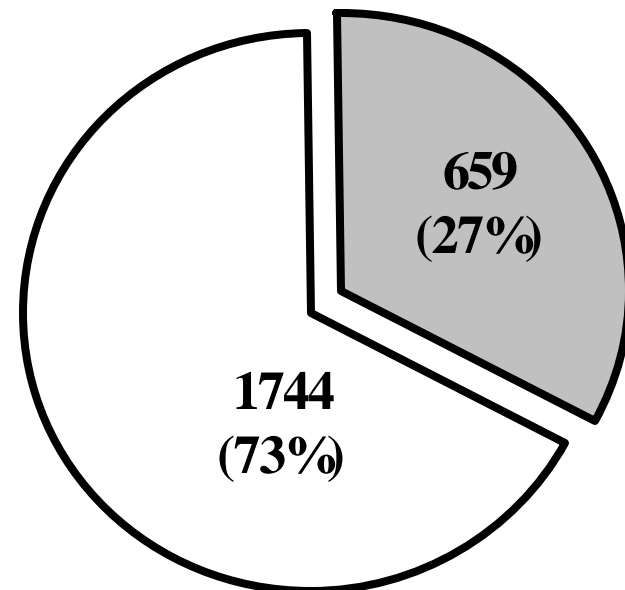


Source: U.S. Census 2000
www.census.gov

AMERICAN INDIAN HOUSING STATUS MINNEAPOLIS AND ST. PAUL



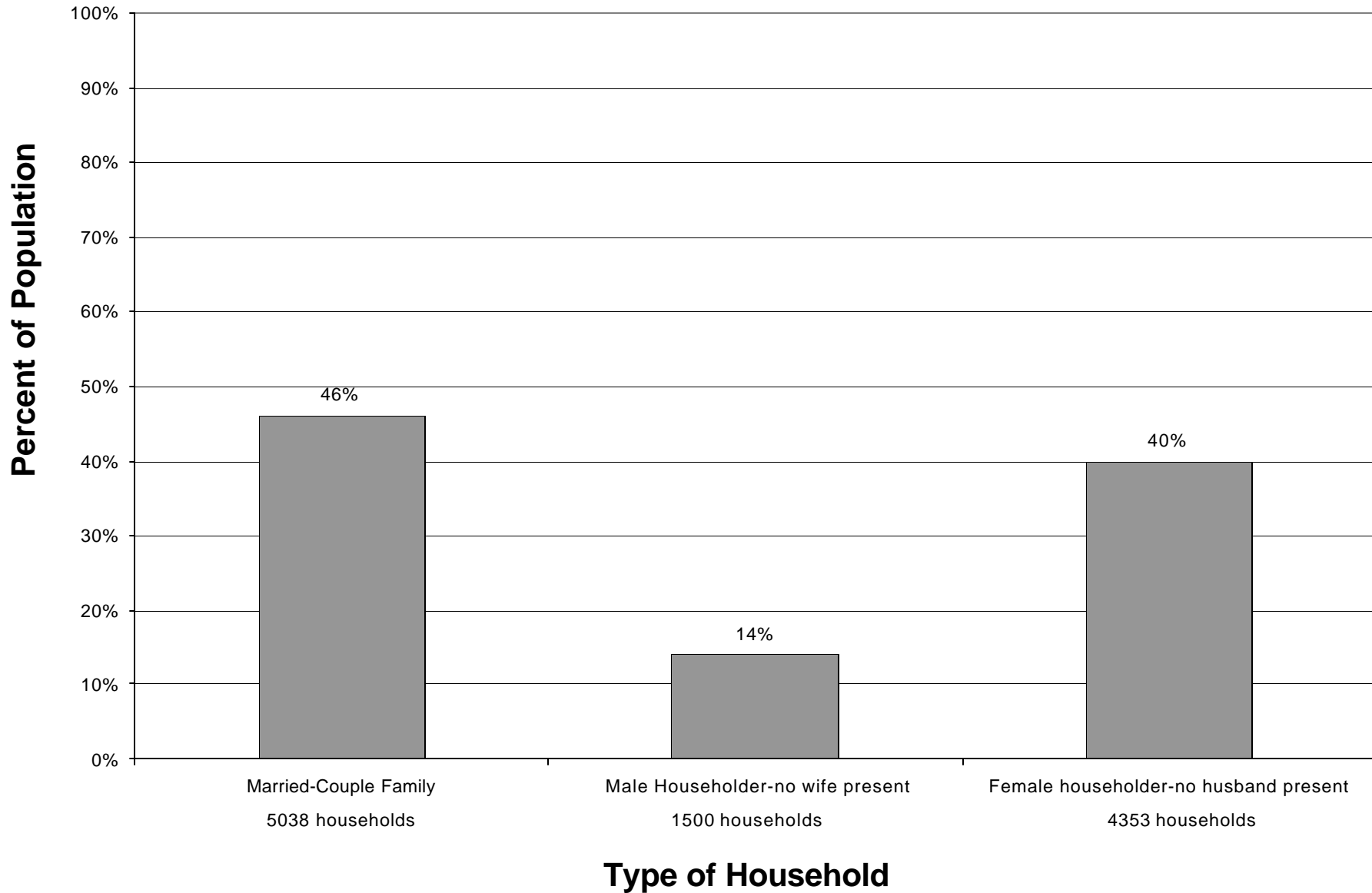
St. Paul



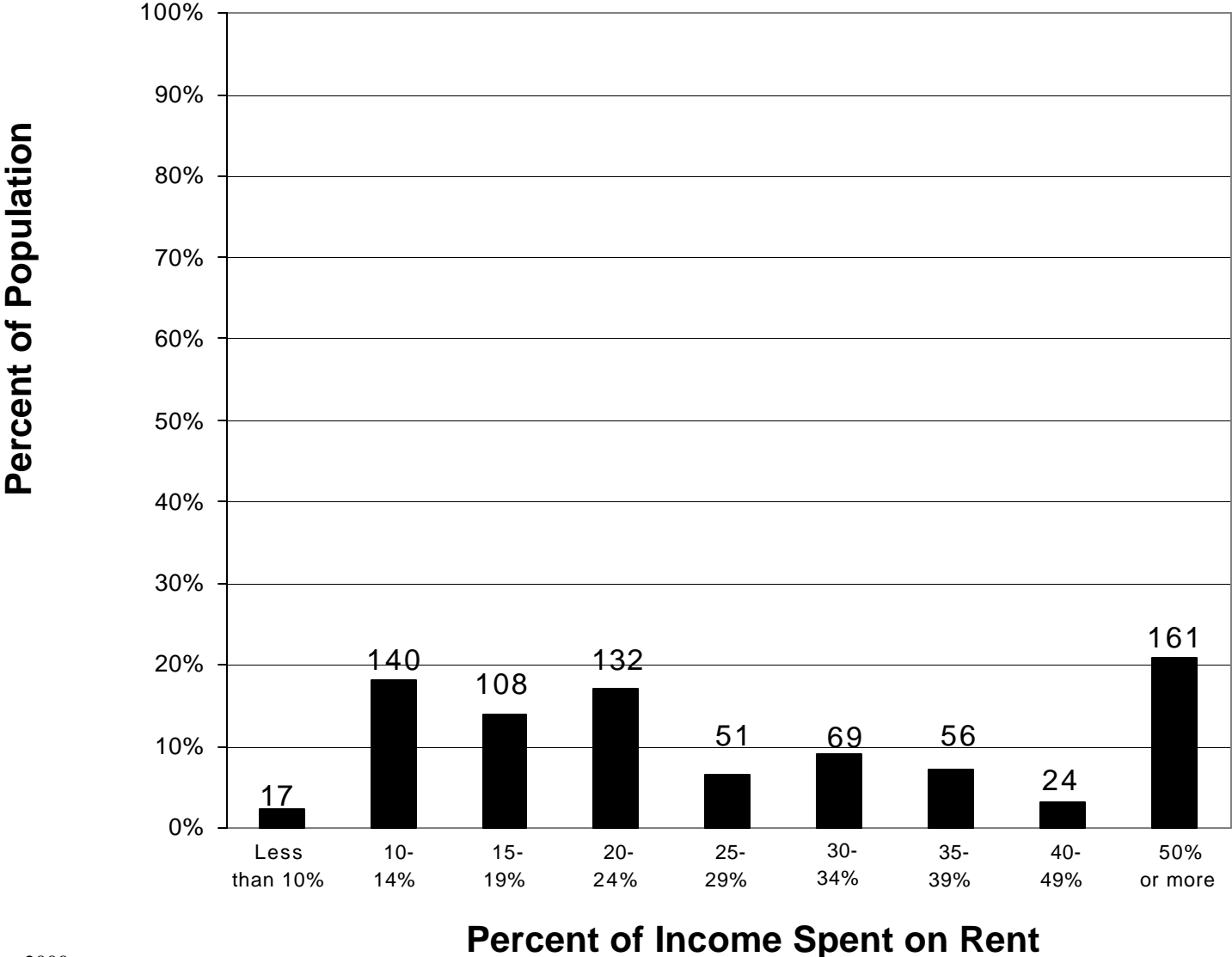
Minneapolis

■ Own Home
□ Renter

HOUSEHOLD TYPE FOR AMERICAN INDIANS (AGE 15-64) IN MINNESOTA



GROSS RENT AS PERCENTAGE OF HOUSEHOLD INCOME OF AMERICAN INDIANS IN ST. PAUL (1999)



Source: U.S.Census 2000
www.census.gov