

**Yukon First Nation Traditional Territories
Territoires Traditionnels des Premières Nations du Yukon**

**Settled Traditional Territories /
Territoires Traditionnels - Ententes conclues:**

- Y1 - Champagne & Aishihik First Nations (Haines Junction)
- Y2 - First Nation of Na-Cho Nyak Dun (Mayo)
- Y3 - Little Salmon / Carmacks First Nations
- Y4 - Selkirk First Nation (Pelly Crossing)
- Y5 - Teslin Tlingit Council
- Y6 - Tron Dek Hwetch'in First Nations (Dawson)
- Y7 - Vuntut Gwich'in First Nation (Old Crow)
- Y12 - Ta'an Kwach'an Council (Lake Laberge)
- Y13 - Tetlit Gwich'in Tribal Council

**Unsettled Traditional Territories /
Territoires Traditionnels - Non résolues:**

- Y8 - White River (Beaver Creek) / Klunne (Burwash Landing) First Nations
- Y9 - Carcross / Tagish First Nation
- Y10 - Kwanlin Dun First Nation (Whitehorse)
- Y11 - Kaska Dene Nation

**B.C. Treaty Negotiations - Land Claims
Négociations du traité de la C.-B.- Revendications territoriales**

Settled Land Claims / Revendications territoriales - Ententes conclues :

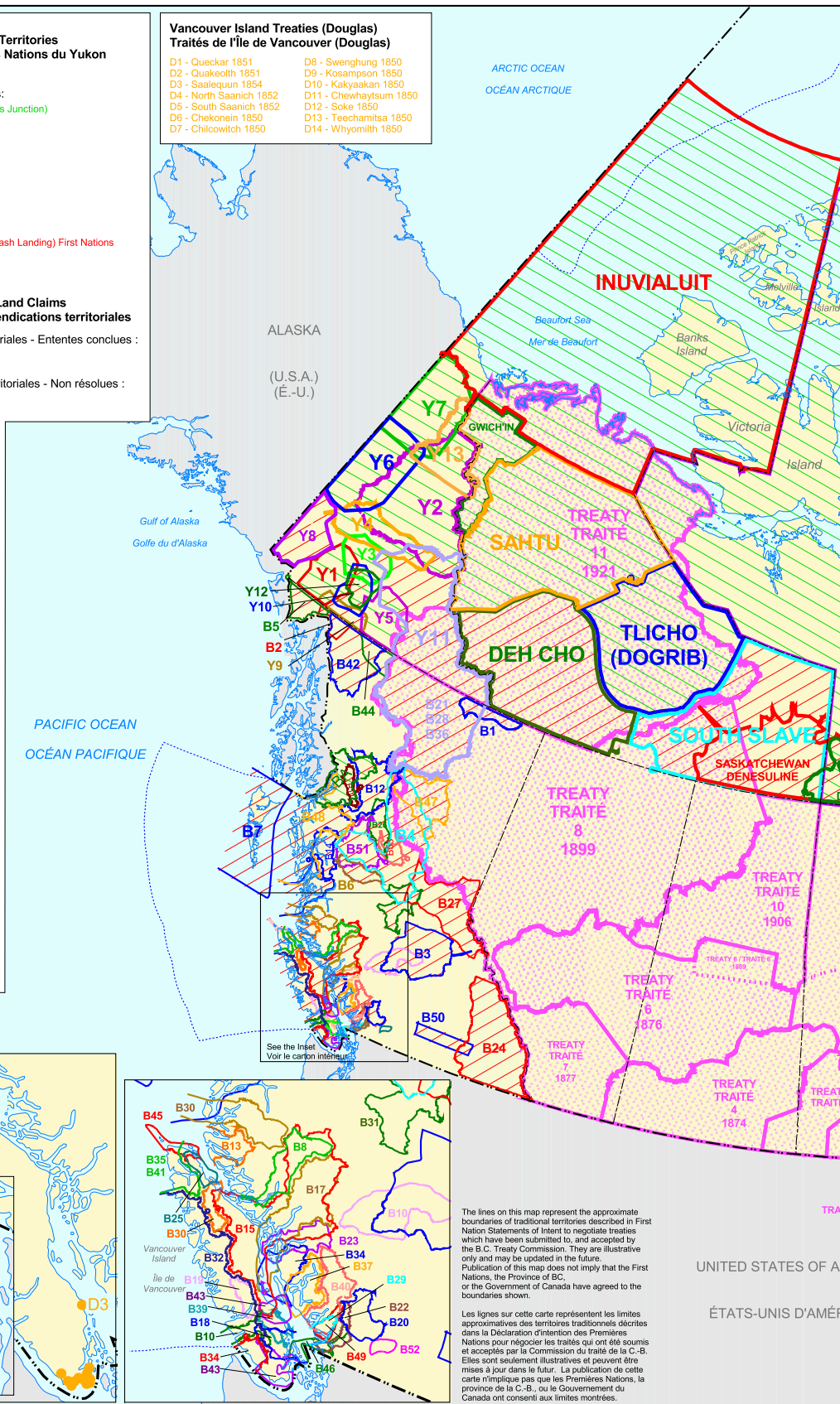
- BA - Nisga'a Lisims Government

Unsettled Land Claims / Revendications territoriales - Non résolues :

- B1 - Acho Dene Koe First Nation
- B2 - Carcross/Tagish First Nation
- B3 - Cariboo Tribal Council
- B4 - Carrier Sekani Tribal Council
- B5 - Champagne and Aishihik First Nations
- B6 - Cheslatta Carrier Nation
- B7 - Haida Nation
- B8 - Da'naxda'xw / Awaetala Nation
- B9 - Dittidaht First Nation
- B10 - Esketemc First Nation (Alkali Lake)
- B11 - Gitanyow Hereditary Chiefs
- B12 - Gitksan Hereditary Chiefs
- B13 - Gwa'-Sala-Nakwaxda'xw Nation
- B14 - Haisla Nation
- B15 - Hamatla Treaty Society
- B16 - Heiltsuk Nation
- B17 - Homalco Band
- B18 - Hul'qum'num Treaty Group
- B19 - Hupacasath First Nation
- B20 - In-SHUCh-eh Council
- B21 - Kaska Dene Council
- B22 - Katzie Indian Band
- B23 - Klahoose Nation
- B24 - Klunaxa / Kinbasket Treaty Council
- B25 - Kwakwaka'wakw First Nation
- B26 - Lake Babine Nation
- B27 - Lheidli T'enneh Band
- B28 - Liard First Nation
- B29 - Musqueam Nation
- B30 - Namgis First Nation
- B31 - Nazko Indian Band
- B32 - Nuu-chah-nulth Tribal Council
- B33 - Owekeeno Nation
- B34 - Pacheedaht First Nation
- B35 - Quatsino First Nation
- B36 - Ross River Dena Council
- B37 - Sechelt Nation
- B38 - Sliammon Indian Band
- B39 - Snuneymuxw First Nation
- B40 - Squamish Nation
- B41 - Stó:Lo Nation
- B42 - Taku River Tlingit Tribal Council
- B43 - Te'Mexw Treaty Association
- B44 - Teslin Tlingit Council
- B45 - Tl'atlashtwaia First Nation
- B46 - Tsawwassen First Nation
- B47 - Tsay Keh Dene Band
- B48 - Tsimshian Nation
- B49 - Tseil-Waututh Nation
- B50 - Westbank First Nation
- B51 - Wet'suwet'en Hereditary Chiefs
- B52 - Yale First Nation
- B53 - Yekooche First Nation

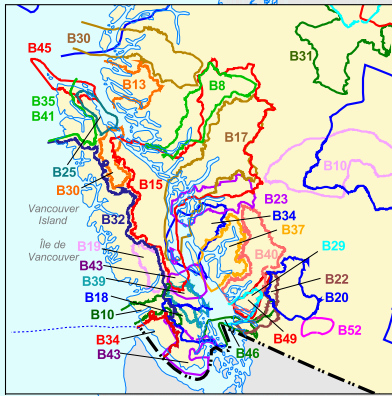
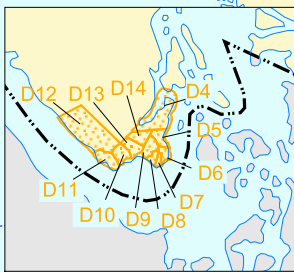
**Vancouver Island Treaties (Douglas)
Traité de l'île de Vancouver (Douglas)**

- | | |
|-------------------------|------------------------|
| D1 - Quecar 1851 | D8 - Swenghung 1850 |
| D2 - Quakeoith 1851 | D9 - Kosampson 1850 |
| D3 - Saalequun 1854 | D10 - Kakyasakam 1850 |
| D4 - North Saanich 1852 | D11 - Chewhaytsam 1850 |
| D5 - South Saanich 1852 | D12 - Soke 1850 |
| D6 - Chekonein 1850 | D13 - Teechamitsa 1850 |
| D7 - Chilcowich 1850 | D14 - Whyomilth 1850 |



**Vancouver Island Treaties
(Douglas)**

**Traité de l'île de Vancouver
(Douglas)**



The lines on this map represent the approximate boundaries of traditional territories described in First Nation Statements of Intent to negotiate treaties which have been submitted to, and accepted by the B.C. Treaty Commission. They are illustrative only and may be updated in the future. Publication of this map does not imply that the First Nations, the Province of BC, or the Government of Canada have agreed to the boundaries shown.

Les lignes sur cette carte représentent les limites approximatives des territoires traditionnels décrites dans la Déclaration d'intention des Premières Nations pour négocier les traités qui ont été soumis et acceptés par la Commission du traité de la C.-B. Elles sont seulement illustratives et peuvent être mises à jour dans le futur. La publication de cette carte n'implique pas que les Premières Nations, la province de la C.-B., ou le Gouvernement du Canada ont consenti aux limites montrées.