
APPENDIX B

EXCEPTIONS TO NISGA'A LANDS

APPENDIX B - 1 **LAND IN THE VICINITY OF RED BLUFF THAT HAS BEEN SET APART AS INDIAN RESERVE NO. 88**

APPENDIX B - 2 **FEE SIMPLE PARCELS WITHIN THE BOUNDARIES OF NISGA'A LANDS**

Schedule 1 Fee simple parcels with a right to access within the boundaries of Nisga'a Lands as set out in paragraphs 25 and 27 of the Access Chapter

APPENDIX B - 3 **WOODLOT LICENCE AND AGRICULTURE LEASES WITHIN THE BOUNDARIES OF NISGA'A LANDS**

Sketch 1 Woodlot Licence 141;

Sketch 2 Agriculture Lease 631313 over Block C of District Lot 453, Cassiar District; and

Sketch 3 Agriculture Lease 633080 over Block A and the Northwest 1/4 of District Lot 3063, Cassiar District.

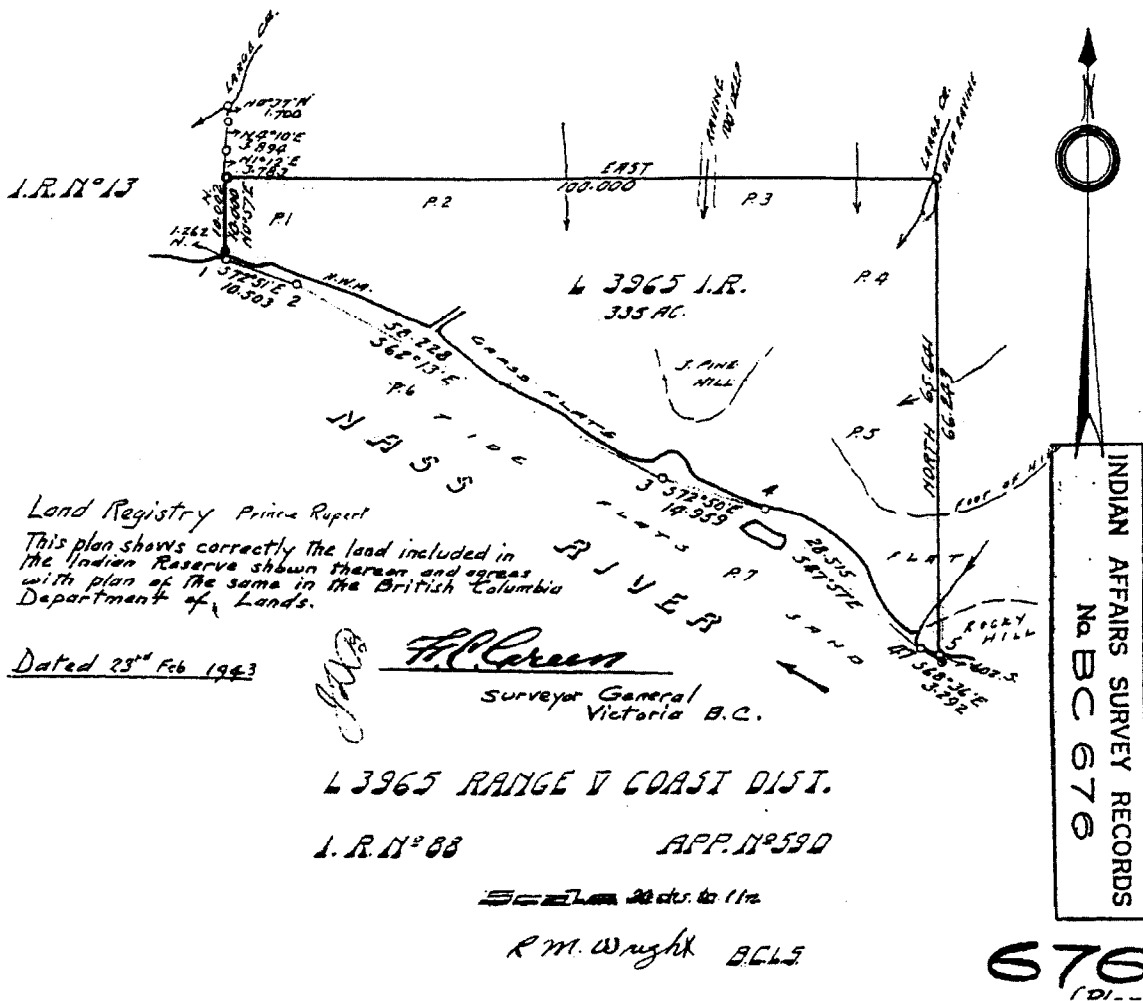
APPENDIX B - 4 **ROADS ASSOCIATED WITH THE FEE SIMPLE PARCELS REFERRED TO IN APPENDIX B - 2**

APPENDIX B - 1

LAND IN THE VICINITY OF RED BLUFF THAT HAS BEEN SET APART AS INDIAN RESERVE NO. 88.

MAP REF: 103I.092

District Lot 3965, Range 5 Coast District, being Red Bluff Indian Reserve Number 88, as shown on Plan BC 676 recorded in the Canada Lands Surveys Records at Ottawa.



APPENDIX B - 2

**FEE SIMPLE PARCELS WITHIN THE BOUNDARIES
OF NISGA'A LANDS**

MAP REF:

In Range 5 Coast District:

103I.091 District Lot 2, and

In Cassiar District:

103P.025 Block A of District Lot 453;

103P.025 Block D of District Lot 453;

103P.025 District Lot 1224;

103P.025 the East 1/2 of the Southeast 1/4 of the Fractional Southeast 1/4 of District Lot 1712;

103P.025 the East 1/2 of the Northeast 1/4 of the Fractional Southeast 1/4 of District Lot 1712;

103P.025 the Fractional North 1/2 of District Lot 1712;

103P.025 the Southwest 1/4 of the Fractional Southwest 1/4 of District Lot 1713;

103P.025 the North 1/2 of the Southwest 1/4 of District Lot 1718, except Plan PRP13808;

103P.025 Lot A of District Lot 1718, Plan PRP13808;

103P.025 the South 1/2 of the Southwest 1/4 of District Lot 1718, except Plans 5830 and 7486;

103P.025 Lot A of District Lot 1718, Plan 5830;

103P.025 Lot 1 of District Lot 1718, Plan 7486;

103P.025 Lot 2 of District Lot 1718, Plan 7486;

103P.025 Lot 3 of District Lot 1718, Plan 7486;

103P.025 District Lot 1720;

103P.025 Block A of the Southeast 1/4 of District Lot 1722;

103P.025 Block A of District Lot 1725;

103P.026 Block A of District Lot 1726;

103P.036 Block B of District Lot 1726;

103P.025 District Lot 1728, except Plans 4739, 5164, 5555, 6816, 8537 and 10545;

103P.025 Lot 1 of District Lot 1728, Plan 4739;

103P.025 Lot 2 of District Lot 1728, Plan 4739;

103P.025 Lot 5 of District Lot 1728, Plan 5555;

103P.025 Lot 6 of District Lot 1728, Plan 6816;

103P.025 Lot 7 of District Lot 1728, Plan 6816;

103P.025 Lot A of District Lots 1728 and 1729, Plan 8537;

- 103P.025 Lot 1 of District Lot 1728, Plan 10545;
- 103P.025 District Lot 1729, except Plans 8537 and 9553;
- 103P.025 Lot A of District Lot 1729, Plan 9553;
- 103P.025 Block A of District Lot 1730;
- 103P.025 Block B of District Lot 2625;
- 103P.025 Block C of District Lot 2625;
- 103P.025 Block A of District Lot 2626;
- 103P.015 the Southeast 1/4 of District Lot 2627, except any portion of the right of way of the Dominion Telegraph Line having a width of 100 feet which may lie within the boundaries of the said land;
- 103P.015 the Fractional Southwest 1/4 of District Lot 2627, except thereout the right of way of the Dominion Telegraph Line;
- 103P.025 the North 1/2 of the Northeast 1/4 of District Lot 3051;
- 103P.025 the South 1/2 of the Northeast 1/4 of District Lot 3051, except Plan 12661;
- 103P.025 Block A of District Lot 3051;
- 103P.025 District Lot 3053;
- 103P.035 the Southeast 1/4 of District Lot 3061;
- 103P.035 the Southwest 1/4 of District Lot 3061;
- 103P.035 the Fractional Northeast 1/4 of District Lot 3063;
- 103P.025 the East 1/2 of District Lot 3080;
- 103P.046 the Fractional Southwest 1/4 of District Lot 4006;
- 103P.025 the Southeast 1/4 of District Lot 4011, except Plan 5249;
- 103P.025 the Southwest 1/4 of District Lot 4011, except Plans 10005 and 12223;
- 103P.025 Lot 1 of District Lot 4011, Plan 10005;
- 103P.025 Lot A of District Lot 4011, Plan 12223;
- 103P.025 the Northeast 1/4 of District Lot 4011;
- 103P.025 the Northwest 1/4 of District Lot 4011;
- 103P.015 the Fractional Northwest 1/4 of District Lot 4012, except Block A and Plan 9176;
- 103P.025 Block A of District Lot 4012;
- 103P.025 Block B of District Lot 4012;
- 103P.025 Block C of District Lot 4012;
- 103P.015 Block D of District Lot 4012;
- 103P.015 Block E of District Lot 4012;
- 103P.015 Block F of District Lot 4012;
- 103P.015 Block G of District Lot 4012;

- 103P.015 Block H of District Lot 4012;
- 103P.015 Block I of District Lot 4012;
- 103P.015 the Fractional Southeast 1/4 of District Lot 4013; and
- 103P.025 District Lot 4015, except any portion of the right of way of the Dominion Telegraph Line having a width of 100 feet which may lie within the boundaries of these lands.

APPENDIX B - 2

SCHEDULE 1 -

Fee simple parcels with a right to access within the boundaries of Nisga'a Lands as set out in paragraphs 25 and 27 of the Access Chapter.

MAP REF:

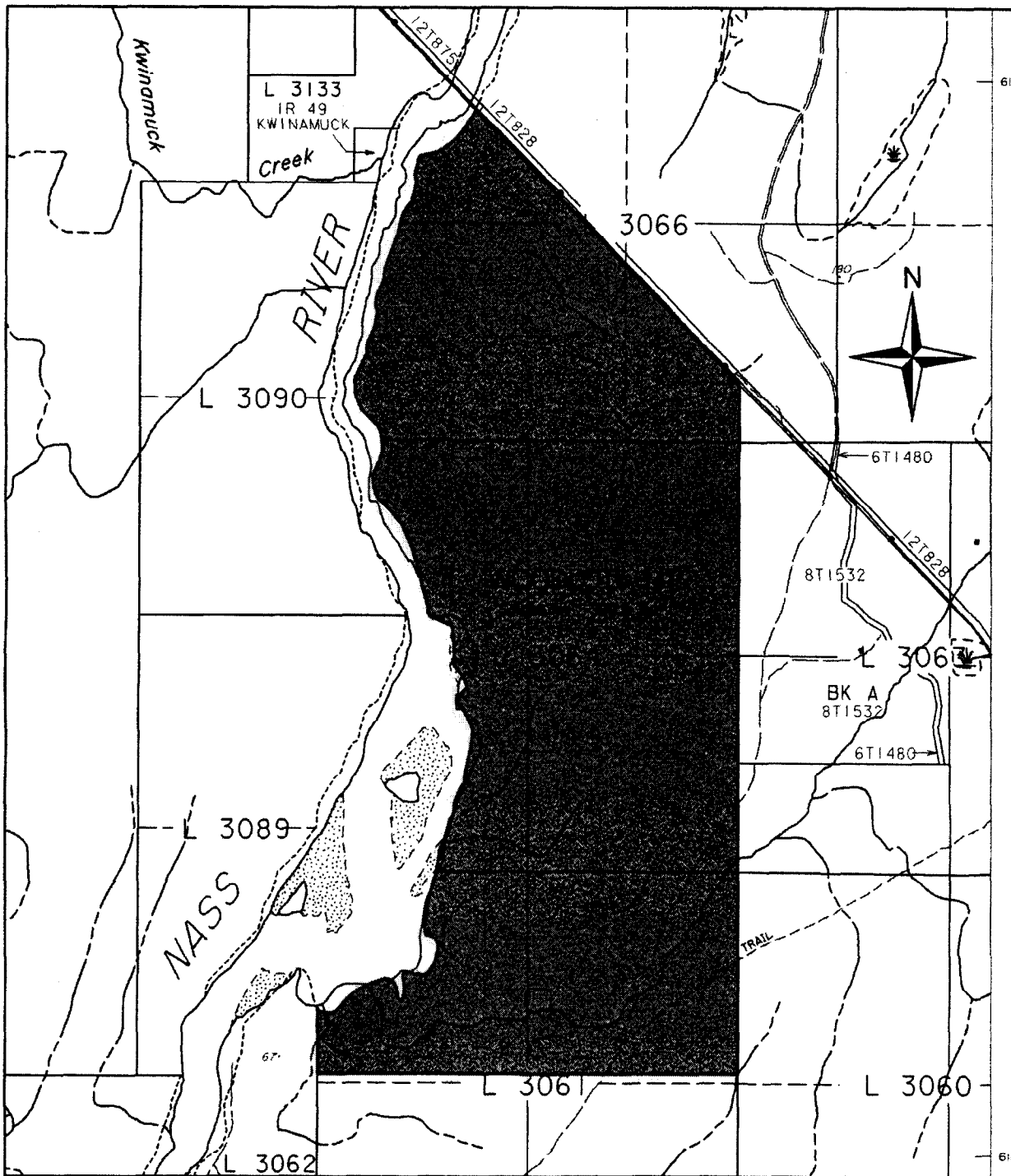
In Cassiar District:

- 103P.025 the East 1/2 of the Southeast 1/4 of the Fractional Southeast 1/4 of District Lot 1712;
- 103P.025 the East 1/2 of the Northeast 1/4 of the Fractional Southeast 1/4 of District Lot 1712;
- 103P.025 the Fractional North 1/2 of District Lot 1712;
- 103P.025 the Southwest 1/4 of the Fractional Southwest 1/4 of District Lot 1713;
- 103P.015 the Southeast 1/4 of District Lot 2627, except any portion of the right of way of the Dominion Telegraph Line having a width of 100 feet which may lie within the boundaries of the said land;
- 103P.025 District Lot 3053;
- 103P.035 the Southeast 1/4 of District Lot 3061;
- 103P.035 the Southwest 1/4 of District Lot 3061;
- 103P.035 the Fractional Northeast 1/4 of District Lot 3063;
- 103P.025 the East 1/2 of District Lot 3080;
- 103P.025 Block B of District Lot 4012;
- 103P.025 Block C of District Lot 4012;
- 103P.015 Block D of District Lot 4012;
- 103P.015 Block E of District Lot 4012;
- 103P.015 Block F of District Lot 4012;
- 103P.015 Block G of District Lot 4012;
- 103P.015 Block H of District Lot 4012;
- 103P.015 Block I of District Lot 4012; and
- 103P.025 District Lot 4015, except any portion of the right of way of the Dominion Telegraph Line having a width of 100 feet which may lie within the boundaries of these lands.

APPENDIX B - 3

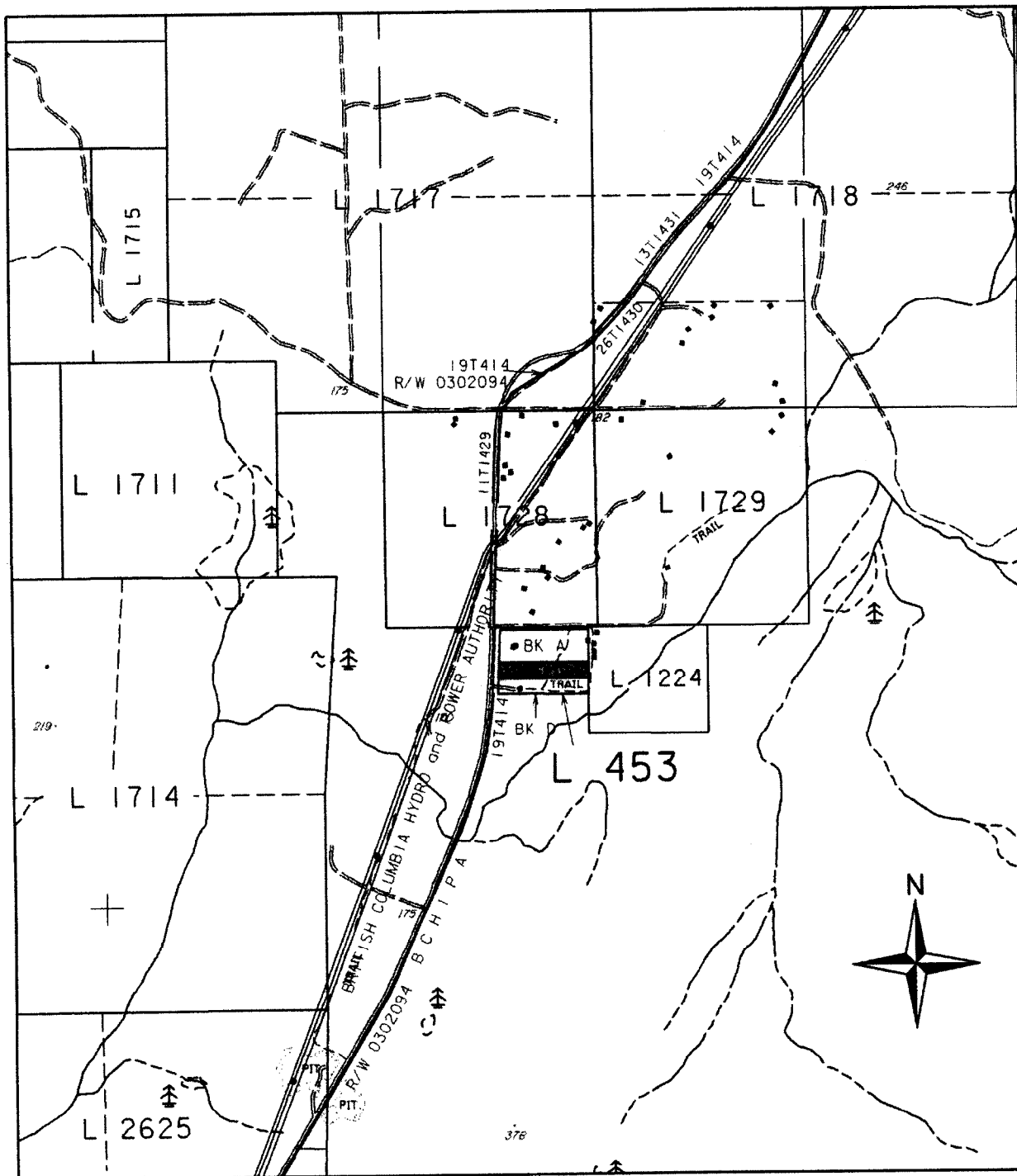
**WOODLOT LICENCE AND AGRICULTURE LEASES
WITHIN THE BOUNDARIES OF NISGA'A LANDS**

- Sketch 1 -** Woodlot Licence 141;
- Sketch 2 -** Agriculture Lease 631313 over Block C of District Lot 453, Cassiar District; and
- Sketch 3 -** Agriculture Lease 633080 over Block A and the Northwest 1/4 District Lot 3063, Cassiar District.



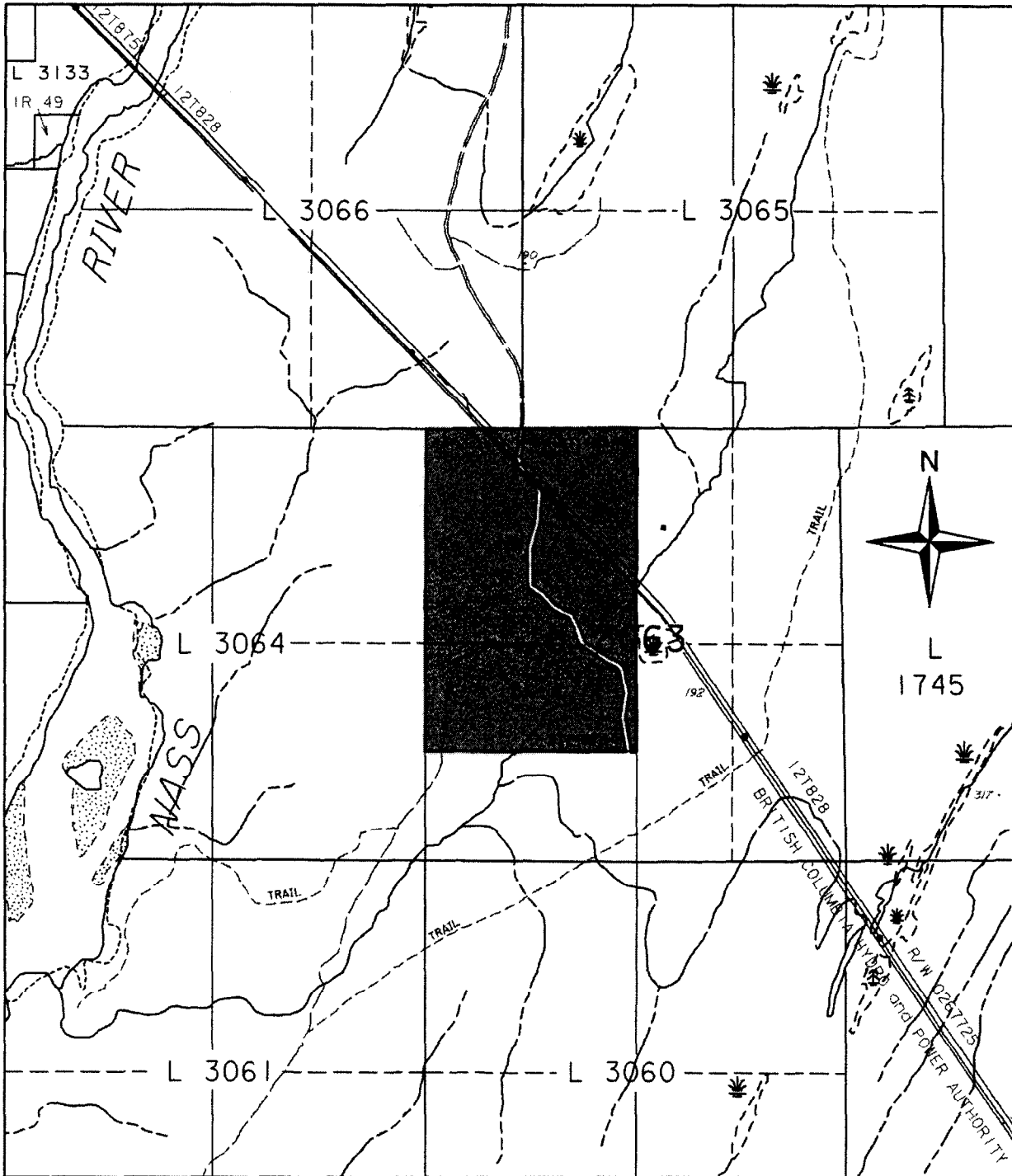
WOODLOT LICENCE 141

LAND DISTRICT - Cassiar	SCALE - 1:20000 200 0 200 400 600 metres
BASE MAP DERIVED FROM - TRIM 1:20,000 Digital Data Representational File	
CADASTRE DERIVED FROM - Ministry of Environment, Lands and Parks, Crown Land Registry Services	APPENDIX: B - 3 Sketch 1
MAP SHEET - Part BCGS 103P035	



LAND ACT TENURE DOCUMENT No. 631313

LAND DISTRICT - Cassiar	SCALE - 1:20000 200 0 200 400 600 metres
BASE MAP DERIVED FROM - TRIM 1:20,000 Digital Data Representational File	
CADASTRE DERIVED FROM - Ministry of Environment, Lands and Parks, Crown Land Registry Services	APPENDIX: B - 3
MAP SHEET - Part BCGS 103P025	Sketch 2



LAND ACT TENURE DOCUMENT No. 633080

LAND DISTRICT - Cassiar

BASE MAP DERIVED FROM - TRIM 1:20,000 Digital Data Representational File

CADASTRE DERIVED FROM - Ministry of Environment, Lands and Parks,
Crown Land Registry Services

MAP SHEET - Part BCGS 103P035 and 103P036

SCALE - 1:20000

200 0 200 400 600 metres

APPENDIX: B - 3
Sketch 3

APPENDIX B - 4

ROADS ASSOCIATED WITH THE FEE SIMPLE PARCELS REFERRED TO IN APPENDIX B-2.

- Firstly:** Historic and travelled trails which were excluded from the estate in fee simple granted by British Columbia in respect of the lands listed in Appendix B - 2; and
- Secondly:** The following roads within Cassiar District :
- | | |
|--------------------------------|---|
| Spencer Road | within the S.W. 1/4 of District Lot 4011; |
| Phillips Landing Road | within the W 1/2 of District Lot 4011 and the E 1/2 of District Lot 1712; |
| Hughan/Tankers Road | within District Lots 1728 and 1729, and a strip of land running between Nisga'a Highway and the westerly boundary of District Lot 1224 bounded on the north by District Lot 1728 and on the south by Block A of District Lot 453. |
| Hydro Road | within the S.W. 1/4 of District Lot 1718; |
| Irene Meadows Road | within the S.W. 1/4 of District Lot 1718, (East portion) |
| Airstrip Road | within Block A of District Lot 1730; |
| Tillicum Lodge Road | that portion lying to the southwest of the junction of Tillicum Lodge Road with the Grease Trail Forest Service Road; and |
| 477.0 square metre Road | dedicated on Plan 12223 and lying within the S.W. 1/4 of District Lot 4011. |

