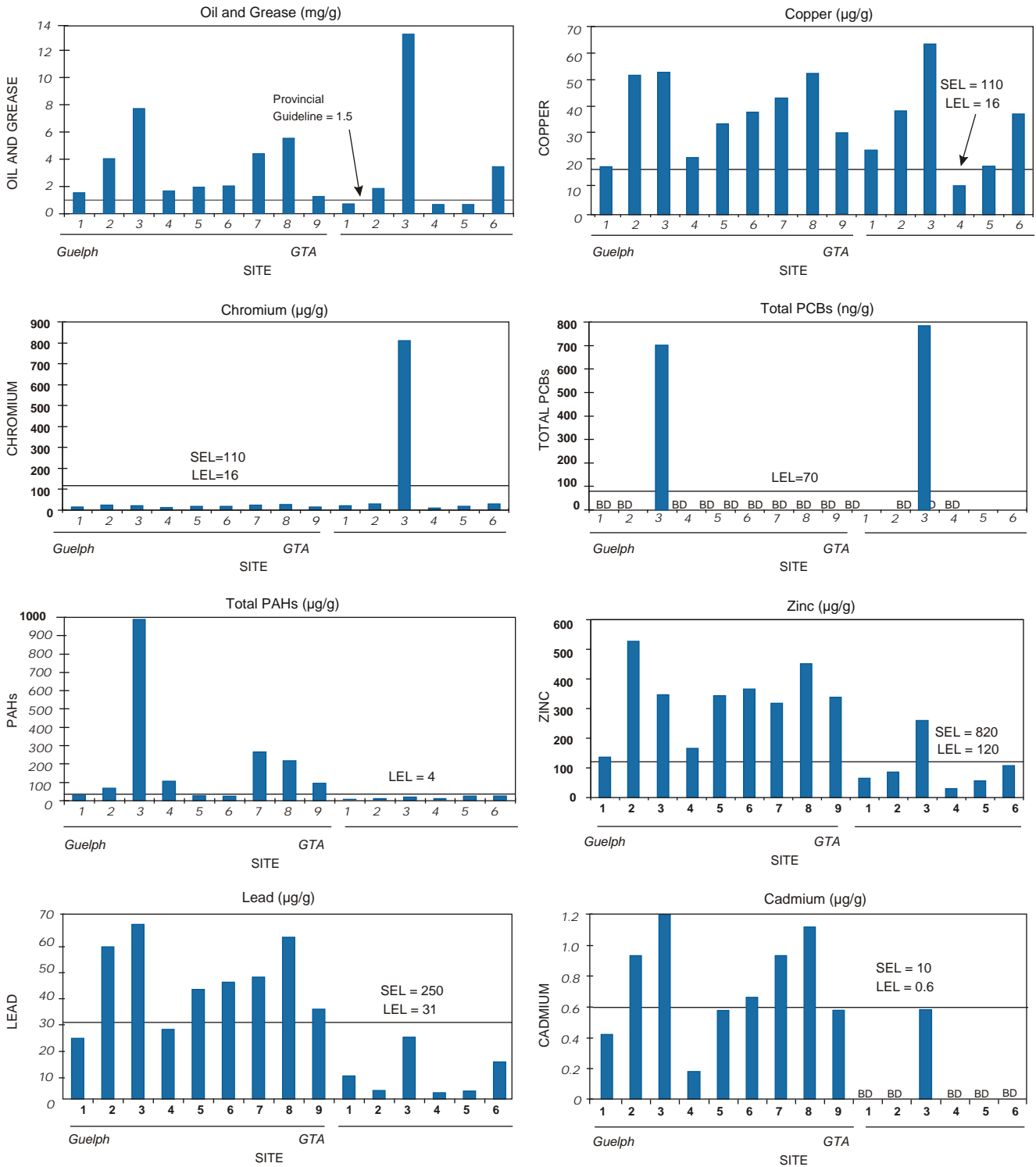


Figure 2: Contaminant Concentrations in Sediments from Stormwater Ponds in Guelph and the GTA (1997)



Provincial Sediment Quality Guidelines:
 LEL = Lowest Effect Level
 SEL = Severe Effect Level
 BD = Below Method Detection Limit:
 Total PCBs = 500 ng/g, Cadmium = 0.111 µg/g