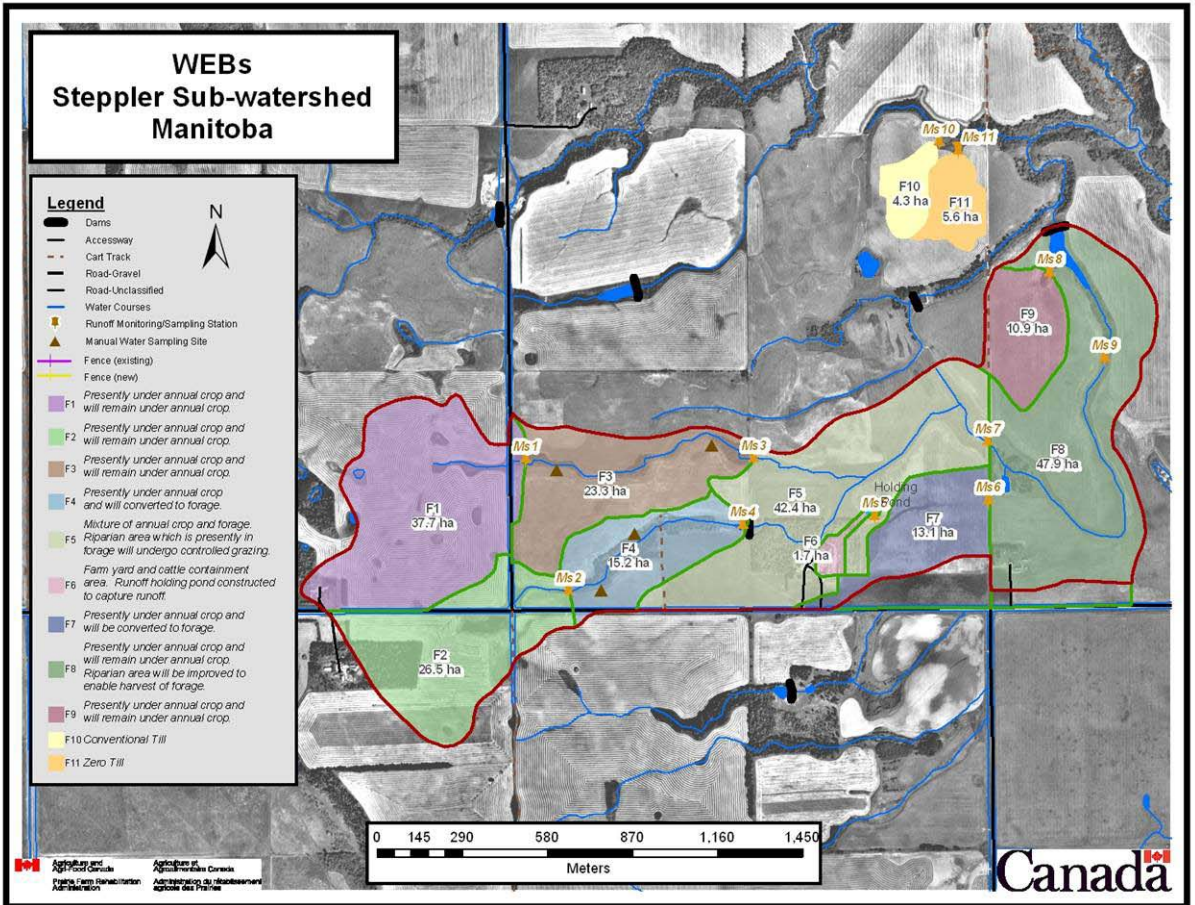


Five beneficial management practices (BMPs) are being assessed within the Stepler-South Tobacco Creek Watershed as part of Agriculture and Agri-Food Canada's Watershed Evaluation of BMPs (WEBS) Project. The South Tobacco Creek Watershed sits approximately 150 kilometers southwest of Winnipeg, Manitoba, and is part of the Red River Basin. Over the past 15 years, numerous studies looking at the relationship between agricultural practices, water quality and water quantity have taken place in this small watershed. Agronomic and climate data collected through these studies have provided a great deal of background data for the WEBS study.



The bulk of the BMPs for this project are being assessed within the Stepler farm. The watershed covers an area of 2.28 ha and is outlined in red on the map above. With the cooperation of the landowner, the watershed was sub-divided into numerous fields (sub-watersheds) to facilitate land practice changes and water quantity/quality monitoring. The various fields are identified as F1, F2, etc. and the field area, in hectares, is provided below the field identification. Runoff monitoring and water-sampling sites are identified as Ms1, Ms2, etc. In addition to the runoff monitoring and water sampling, soil, snow and trash material (surface material) sampling are taking place within the sub-watersheds. Two fields (F10 and F11) just north of the main study area are also included in land practices assessment.