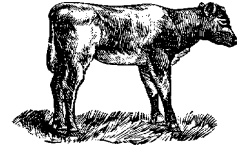




# A View of the Veal Industry CANADA



For the week of January 12, 2002

### Grain Fed Veal Calves Sold

	2002	2001	% chg
<b>Quebec Veal Calves</b>			
Male - Good (100 - 120 lbs)	1,448	1,135	27.6
Male - Good (121 - 140 lbs)	463	386	19.9
Male - Average (100 - 140 lbs)	1,022	589	73.5
Female - Good (100 - 120 lbs)	183	112	63.4
Miscellaneous - All weights	515	353	45.9

YTD For the Period January 1 - January 10, 2002

### Ontario Veal Calves

450 + lbs	971	1,371	-29.2
125 - 450 lbs	380	421	-9.7
Under 125 lbs	1,404	1,355	3.6

### Federally Inspected Slaughter Calves

	2002	2001	% chg
Western Canada	54	29	86.2
Ontario	1,875	1,925	-2.6
Quebec/Atlantic Provinces	6,946	6,991	-0.6
<b>Canada</b>	<b>8,875</b>	<b>8,945</b>	<b>-0.8</b>

### Average Prices

	Week Ending January 19, 2002			
	\$/cwt	2002	2001	% chg
<b>Quebec Veal Calves</b>				
Male - Good (100 - 120 lbs)		243.00	229.00	6.1
Male - Good (121 - 140 lbs)		230.00	220.00	4.5
Male - Average (100 - 140 lbs)		215.00	202.00	6.4
Female - Good (100 - 120 lbs)		573.00	357.00	60.5
Miscellaneous - All weights		102.00	98.00	4.1

### A2 Grain Fed Veal With Hide off (dressed weight)

530+ lbs (340-380 lb carcass) average: \$164.38  
range: 160.00 - 167.50

### Ontario Veal Calves (13 markets)

Over 600 lbs	81.73	87.12	-6.2
451 - 600 lbs	81.71	86.34	-5.4
301 - 450 lbs	104.18	111.49	-6.6
125 - 300 lbs	174.50	179.32	-2.7
Under 125 lbs	218.28	208.52	4.7

### Price Range (\$/cwt)

Ontario Veal Calves	Weight	Price Range
(based on all computerized Ontario markets)	Over 450	68.16 - 95.85
	Under 450	86.77 - 120.89

### Dressed Veal Exports

YTD for week ending November 17, 2001

(metric tonnes)	2001	2000	% chg
United States	8,149	7,801	4.5
Japan	79	43	83.7
Mexico	50	35	42.9
Korea	19	-	
Other	298	71	319.7
<b>Total</b>	<b>8,595</b>	<b>7,950</b>	<b>8.1</b>

### Dressed Veal Imports

week ending January 5, 2002

(Metric Tonnes) (preliminary)	2002	2001	% chg
United States	5	14	-64.3
Australia	-	15	
New Zealand	-	-	
<b>Total</b>	<b>5</b>	<b>29</b>	<b>-82.8</b>

Source: CFIA & USDA



## UNITED STATES

Year To Date for the week ending January 12, 2002

### Total Calf / Veal

	2002	2001	% chg
Slaughter ('000 head)	29	40	-27.5
Avg Dressed Wt (lbs)	189	198	-4.5
Production (mil lbs)	5.3	7.6	-30.3

### U.S. Wholesale Price Record

January 14, 2002

Veal, (\$/cwt)	2002	2001	% chg
307 Rack, Ribeye, Boneless	1,250	1,400	-10.7
332 Loin, Trimmed 4 x 4	500	540	-7.4
1336 Leg Slice, Retail	565	635	-11.0
1312 Osso Buco, Fore Shank	425	425	0.0

### Lancaster, PA

Good Veal 54.25 n/a

### Madison, Wisconsin

Vealers: Good and Choice boning type:

90 - 110 lbs 35.00 - 50.00

70 - 90 lbs 20.00 - 35.00

Source: Urner Barry/USDA Market News