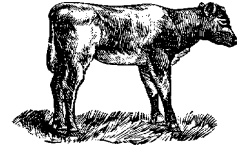




## A View of the Veal Industry CANADA



For the week of May 11, 2002

### Grain Fed Veal Calves Sold

	2002	2001	% chg
<b>Quebec Veal Calves</b>			
Male - Good (100 - 120 lbs)	1,105	849	30.2
Male - Good (121 - 140 lbs)	196	181	8.3
Male - Average (100 - 140 lbs)	532	520	2.3
Female - Good (100 - 120 lbs)	227	153	48.4
Miscellaneous - All weights	221	167	32.3

YTD For the Period January 1 - May 9, 2002

### Ontario Veal Calves

	2002	2001	% chg
450 + lbs	10,250	11,984	-14.5
125 - 450 lbs	3,349	3,557	-5.8
Under 125 lbs	14,167	13,675	3.6

### Federally Inspected Slaughter Calves

	2002	2001	% chg
Western Canada	460	396	16.2
Ontario	8,743	19,211	-54.5
Quebec/Atlantic Provinces	74,443	70,771	5.2
<b>Canada</b>	<b>83,646</b>	<b>90,378</b>	<b>-7.4</b>

### Average Prices

	Week Ending May 18, 2002			
	\$/cwt	2002	2001	% chg
<b>Quebec Veal Calves</b>				
Male - Good (100 - 120 lbs)		353.00	342.00	3.2
Male - Good (121 - 140 lbs)		298.00	301.00	-1.0
Male - Average (100 - 140 lbs)		277.00	297.00	-6.7
Female - Good (100 - 120 lbs)		894.00	597.00	49.7
Miscellaneous - All weights		173.00	175.00	-1.1

### A2 Grain Fed Veal With Hide off (dressed weight)

530+ lbs (340-380 lb carcass) average: \$168.91  
range: 156.00-178.50

### Ontario Veal Calves (13 markets)

	2002	2001	% chg
Over 600 lbs	90.69	96.23	-5.8
451 - 600 lbs	91.42	98.50	-7.2
301 - 450 lbs	102.75	122.57	-16.2
125 - 300 lbs	229.95	254.58	-9.7
Under 125 lbs	301.67	301.32	0.1

### Price Range (\$/cwt)

Ontario Veal Calves	Weight	Price Range
(based on all computerized Ontario markets)	Over 450	81.02-104.47
	Under 450	77.21-363.00

### Dressed Veal Exports

YTD for week ending March 16, 2002

(metric tonnes)	2002	2001	% chg
United States	1,904	2,316	-17.8
Japan	2	28	
Mexico	-	1	
Korea	-	-	
Other	74	77	
<b>Total</b>	<b>1,980</b>	<b>2,422</b>	<b>-18.2</b>

### Dressed Veal Imports

week ending May 4, 2002

(Metric Tonnes) (preliminary)	2002	2001	% chg
United States	517	654	-20.9
Australia	265	393	-32.6
New Zealand	6	-	
<b>Total</b>	<b>788</b>	<b>1,047</b>	<b>-24.7</b>

Source: CFIA & USDA



## UNITED STATES

Year To Date for the week ending May 11, 2002

### Total Calf / Veal

	2002	2001	% chg
Slaughter ('000 head)	363	352	3.1
Avg Dressed Wt (lbs)	200	203	-1.5
Production (mil lbs)	66.1	69.4	-4.8

### U.S. Wholesale Price Record

May 10, 2002

Veal, (\$/cwt)	2002	2001	% chg
307 Rack, Ribeye, Boneless	1,225	1,250	-2.0
332 Loin, Trimmed 4 x 4	470	500	-6.0
1336 Leg Slice, Retail	585	600	-2.5
1312 Osso Buco, Fore Shank	440	480	-8.3

### Lancaster, PA

Good Veal	39.34	67.25
-----------	-------	-------

### Madison, Wisconsin

Vealers: Good and Choice boning type:

90 - 110 lbs not tested 50.00-60.00

70 - 90 lbs not tested 40.00-50.00

Source: Urner Barry/USDA Market News