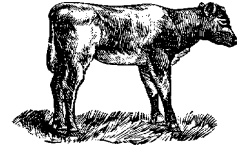




## A View of the Veal Industry CANADA



For the week of October 19, 2002

### Grain Fed Veal Calves Sold

	2002	2001	% chg
<b>Quebec Veal Calves</b>			
Male - Good (90 - 120 lbs)	943	1,190	-20.8
Male - Good (121 - 140 lbs)	229	208	10.1
Male - Average (90 - 140 lbs)	844	593	42.3
Female - Good (90 - 120 lbs)	115	134	-14.2
Miscellaneous - All weights	457	324	41.0

YTD For the Period January 1 - October 17, 2002

### Ontario Veal Calves

	2002	2001	% chg
450 + lbs	22,511	25,522	-11.8
125 - 450 lbs	7,291	7,642	-4.6
Under 125 lbs	32,821	32,977	-0.5

### Federally Inspected Slaughter Calves

	2002	2001	% chg
Western Canada	1,002	786	27.5
Ontario	14,219	41,353	-65.6
Quebec/Atlantic Provinces	159,660	152,852	4.5
<b>Canada</b>	<b>174,881</b>	<b>194,991</b>	<b>-10.3</b>

### Average Prices

	Week Ending October 26, 2002			
	\$/cwt	2002	2001	% chg
<b>Quebec Veal Calves</b>				
Male - Good (90 - 120 lbs)		186.00	208.00	-10.6
Male - Good (121 - 140 lbs)		180.00	214.00	-15.9
Male - Average (90 - 140 lbs)		155.00	190.00	-18.4
Female - Good (90 - 120 lbs)		602.00	602.00	
Miscellaneous - All weights		94.00	97.00	-3.1

### A2 Grain Fed Veal With Hide off (dressed weight)

530+ lbs (340-380 lb carcass) average: \$184.74  
range: 177.00-189.00

### Ontario Veal Calves (13 markets)

	2002	2001	% chg
Over 600 lbs	93.16	103.72	-10.2
451 - 600 lbs	85.48	100.86	-15.2
301 - 450 lbs	91.65	112.23	-18.3
125 - 300 lbs	119.03	165.27	-28.0
Under 125 lbs	153.82	194.36	-20.9

### Price Range (\$/cwt)

Ontario Veal Calves	Weight	Price Range
(based on all computerized Ontario markets)	Over 450	74.32 - 106.75
	Under 450	72.63 - 200.21

### Dressed Veal Exports

YTD for week ending August 24, 2002

(metric tonnes)	2002	2001	% chg
United States	n/a	6,380	
Japan	35	68	-48.5
Mexico	7	50	-86.0
Korea	-	-	
Other	253	160	58.1
<b>TOTAL</b>	<b>295</b>	<b>6,658</b>	<b>-95.6</b>

### Dressed Veal Imports

week ending October 12, 2002

(Metric Tonnes) (preliminary)	2002	2001	% chg
United States	1,260	1,183	6.5
Australia	1,294	1,109	16.7
New Zealand	8	71	-88.7
<b>Total</b>	<b>2,562</b>	<b>2,363</b>	<b>8.4</b>

Source: CFIA & USDA



## UNITED STATES

### U.S. Wholesale Price Record

Year To Date for the week ending October 19, 2002

### Total Calf / Veal

	2002	2001	% chg
Slaughter ('000 head)	798	781	2.2
Avg Dressed Wt (lbs)	188	198	-5.1
Production (mil lbs)	147.3	150.8	-2.3

Veal, (\$/cwt)	2002	2001	% chg
307 Rack, Ribeye, Boneless	1,260	1,200	5.0
332 Loin, Trimmed 4 x 4	530	480	10.4
1336 Leg Slice, Retail	575	560	2.7
1312 Osso Buco, Foreshank	420	450	-6.7

### Lancaster, PA

Good Veal	22.25	82.50	-73.0
-----------	-------	-------	-------

### Madison, Wisconsin

Vealers: Good and Choice boning type:

90 - 110 lbs 10.00-20.00 30.00-50.00

70 - 90 lbs 10.00-20.00 30.00-45.00

Source: Urner Barry/USDA Market News