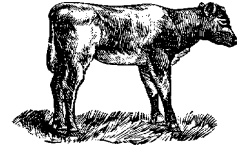




A View of the Veal Industry CANADA



For the week of September 7, 2002

Grain Fed Veal Calves Sold

	2002	2001	% chg
Quebec Veal Calves			
Male - Good (100 - 120 lbs)	940	1,024	-8.2
Male - Good (121 - 140 lbs)	202	146	38.4
Male - Average (100 - 140 lbs)	820	575	42.6
Female - Good (100 - 120 lbs)	109	138	-21.0
Miscellaneous - All weights	430	339	26.8

YTD For the Period January 1 - September 5, 2002

Ontario Veal Calves

450 + lbs	19,661	22,238	-11.6
125 - 450 lbs	6,300	6,546	-3.8
Under 125 lbs	27,769	27,977	-0.7

Federally Inspected Slaughter Calves

	2002	2001	% chg
Western Canada	824	665	23.9
Ontario	13,097	36,000	-63.6
Quebec/Atlantic Provinces	135,880	130,333	4.3
Canada	149,801	166,998	-10.3

Average Prices

	Week Ending September 14, 2002			
	\$/cwt	2002	2001	% chg
Quebec Veal Calves				
Male - Good (100 - 120 lbs)		219.00	223.00	-1.8
Male - Good (121 - 140 lbs)		200.00	225.00	-11.1
Male - Average (100 - 140 lbs)		166.00	194.00	-14.4
Female - Good (100 - 120 lbs)		582.00	664.00	-12.3
Miscellaneous - All weights		83.00	97.00	-14.4

A2 Grain Fed Veal With Hide off (dressed weight)

530+ lbs (340-380 lb carcass) average: \$180.63
range: 172.00-188.00

Ontario Veal Calves (13 markets)

Over 600 lbs	86.96	106.52	-18.4
451 - 600 lbs	84.63	101.59	-16.7
301 - 450 lbs	99.21	126.68	-21.7
125 - 300 lbs	131.89	160.98	-18.1
Under 125 lbs	168.78	198.36	-14.9

Price Range (\$/cwt)

Ontario Veal Calves	Weight	Price Range
(based on all computerized Ontario markets)	Over 450	74.37-99.40
	Under 450	76.24-177.99

Dressed Veal Exports

YTD for week ending July 13, 2002

(metric tonnes)	2002	2001	% chg
United States	n/a	5,426	
Japan	31	63	-50.8
Mexico	7	50	
Korea	-	-	
Other	177	141	25.5

Dressed Veal Imports

week ending August 31, 2002

(Metric Tonnes) (preliminary)	2002	2001	% chg
United States	1,043	1,051	-0.8
Australia	1,128	965	16.9
New Zealand	8	2	
Total	2,179	2,018	8.0

Source: CFIA & USDA



UNITED STATES

Year To Date for the week ending September 7, 2002

Total Calf / Veal

	2002	2001	% chg
Slaughter ('000 head)	673	665	1.2
Avg Dressed Wt (lbs)	176	188	-6.4
Production (mil lbs)	123.7	128.8	-4.0

U.S. Wholesale Price Record

August 23, 2002

Veal, (\$/cwt)	2002	2001	% chg
307 Rack, Ribeye, Boneless	1,260	1,200	5.0
332 Loin, Trimmed 4 x 4	515	480	7.3
1336 Leg Slice, Retail	580	560	3.6
1312 Osso Buco, Foreshank	440	450	-2.2

Lancaster, PA

Good Veal 28.59 n/a

Madison, Wisconsin

Vealers: Good and Choice boning type:

90 - 110 lbs not tested 40.00-50.00

70 - 90 lbs not tested 30.00-45.00

Source: Urner Barry/USDA Market News

Prepared by: Red Meat Section, Agriculture and Agri-Food Canada

Contact: Patti Negrave (613) 759-6216 or see us at: <http://www.agr.ca/redmeat>