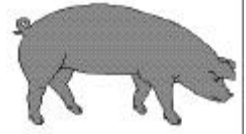




# Hog Statistics at a Glance CANADA



For the Week Ending August 16, 2003

Federal Slaughter	CUMULATIVE TOTALS TO DATE			
	weekly kill # head	2003 '000 head	2002 '000 head	% chg
West	153,744	5,356.0	5,006.0	7.0
Ontario	72,006	2,672.0	2,443.0	9.4
Quebec	157,078	5,025.0	5,024.0	0.0
Atlantic	9,338	322.0	331.0	-2.7
<b>CANADA</b>	<b>392,166</b>	<b>13,375.0</b>	<b>12,804.0</b>	<b>4.5</b>
<b>Pork Production (t)</b>	<b>34,315</b>	<b>1,170,313</b>	<b>1,116,509</b>	<b>4.8</b>
<b>Estimated Sow Slaughter</b>	<b>2,854</b>	<b>101,422</b>	<b>104,104</b>	<b>-2.6</b>

Weekly Prices \$/kg (index 100)	2003			2002			% chg
	2003	2002	% chg	2003	2002	% chg	
Ontario	102.5%	1.54	1.43	7.7			
Quebec	1.38	1.45	-4.8				
Alberta	1.43	1.30	10.0				
Manitoba*	1.56	1.48	5.4				
British Columbia	1.59	1.54	3.2				
Saskatchewan	1.37	1.28	7.0				
Nova Scotia	1.55	1.65	-6.1				
Prince Ed. Is.	1.49	1.52	-2.0				
New Brunswick	1.51	1.61	-6.2				

\*estimate

## PORK EXPORTS YTD for the period of January 1 to June 30, 2003

(Metric Tonnes)	2003	2002	% chg
<b>FRESH, FROZEN AND PROCESSED PORK</b>			
United States	220,138	188,448	16.8
Japan	103,449	84,184	22.9
Australia	20,773	11,803	76.0
Russia	16,733	18,171	(7.9)
Mexico	25,366	18,984	33.6
South Korea	17,439	15,872	9.9
China	12,974	9,097	42.6
Taiwan	7,552	2,129	254.7
Cuba	4,024	5,198	(22.6)
New Zealand	3,695	3,466	6.6
Other	33,731	28,244	19.4
<b>Total</b>	<b>465,874</b>	<b>385,596</b>	<b>20.8</b>

Source: STATISTICS CANADA

## LIVE HOG EXPORTS TO U.S.

	YTD 03	YTD 02	% chg
<b>HOGS (head)</b>			
Barrows/Gilts/Sows	1,168,433	1,179,995	-1.0
Feeder Pigs	2,864,693	2,309,946	24.0
<b>Total</b>	<b>4,033,126</b>	<b>3,489,941</b>	<b>15.6</b>
<b>Week Ending 03-08-09</b>			
Barrows/Gilts/Sows	59,188	32,165	84.0
Feeder Pigs	98,000	78,405	25.0
<b>Total</b>	<b>157,188</b>	<b>110,570</b>	<b>42.2</b>



Source: USDA-APHIS

## IMPORTS YTD for the week ending August 9, 2003

(Metric Tonnes) preliminary	2003	2002	% chg
<b>FRESH &amp; FROZEN PORK</b>			
United States	33,586	43,070	-22.0
Denmark	1,439	334	330.8
Other	634	21	2919.0

PROCESSED & OTHER PORK	2003	2002	% chg
United States	6,072	6,117	-0.7
Denmark	6	-	
Other	85	124	-31.5
<b>TOTAL IMPORTS</b>	<b>41,822</b>	<b>49,666</b>	<b>-15.8</b>

## Frozen Pork from the European Union:

The TRQ level has established for frozen meat of pork originating from EU countries, for the twelve month period August 1 to July 31, 2004. Imports in excess of 2,970,000 kg in the twelve month period are subject to a surtax in an amount equal to the value for the duty (100%) determined in accordance with the Customs Act. In 2001/02 the Tariff Rate Quota was reached on October 2, 2002. Effective as of February 19, 2003 the Tariff Rate Quota has filled, therefore, all imports to July 31, 2003 will be subject to the EU Surtax Order.

	Permits issued as of August 7, 2003		
	2003/2004	2001/2002	% chg
Utilization (kg)	287,935	487,065	-40.9
Balance (kg)	2,682,065	2,482,935	8.0
% Utilization	9.7%	16.4%	(40.9)

Prepared by: Red Meat Section, Agriculture and Agri-Food Canada

Contact: Patti Negrave (613) 759-6216 or see us at: <http://www.agr.ca/redmeat>



# Hog Statistics at a Glance CANADA

## Canadian Hog Slaughter by Province of Origin

Total Slaughter Year to Date August 16, 2003

Week ending August 16, 2003

	2003	2002	% chg	2003	2002	% chg
British Columbia	161,143	153,776	4.8	4,719	5,178	-8.9
Alberta	2,235,562	2,078,713	7.5	71,245	67,937	4.9
Saskatchewan	847,273	895,045	-5.3	24,455	27,102	1.6
Manitoba	2,404,846	2,182,986	10.2	62,663	77,998	-19.7
Ontario	3,452,248	3,273,155	5.5	98,154	103,920	-5.5
Quebec	4,608,759	4,547,025	1.4	144,014	135,953	5.9
New Brunswick	115,586	129,525	-10.8	3,494	3,982	-12.3
Nova Scotia	130,204	145,821	-10.7	3,913	4,224	-7.4
Prince Edward Island	134,454	135,965	-1.1	3,665	3,509	4.4
<b>CANADA</b>	<b>14,090,075</b>	<b>13,542,011</b>	<b>4.0</b>	<b>416,322</b>	<b>429,803</b>	<b>-3.1</b>

## UNITED STATES

Year To Date for the Week Ending August 16, 2003

### Supply Summary

	2003	2002	% chg
Slaughter ('000 head)	60,066	60,169	-0.2
Slaughter for the week	1,968	1,805	9.0
Avg Dressed Wt (lbs)	195	193	1.0
Pork Produced (mil lbs)	11,903	11,845	0.5

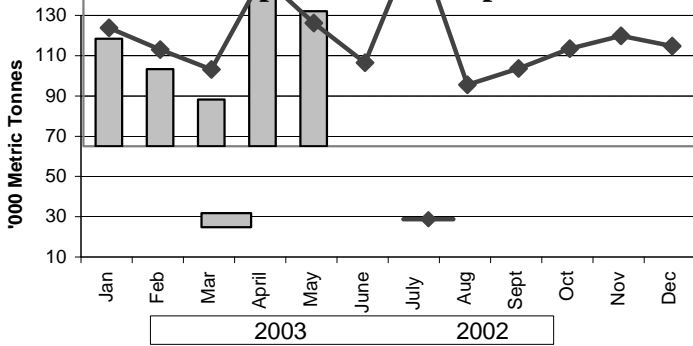
Source: USDA-APHIS

### Weekly US Prices (\$/cwt)

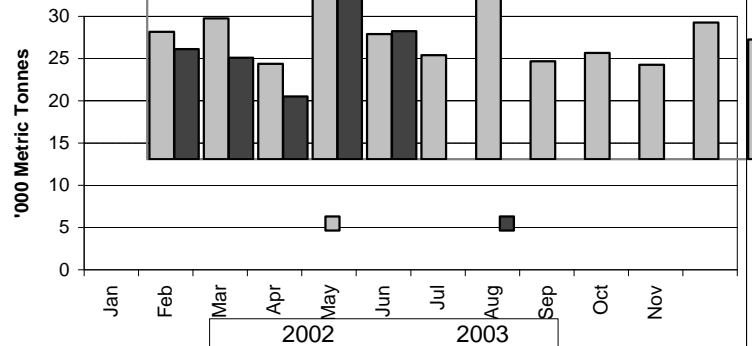
	2003	2002	% chg
South St. Joseph	39.25	33.50	17.2
Sioux Falls	40.45	34.15	18.4
Lancaster County	41.41	32.79	26.3
National Cost	58.98	48.68	21.2

(51/54% Lean Yield Basis)

### Total Japanese Pork Imports



### Canada Pork Exports to Japan



Source: Agriculture & Livestock Industries Corporation

Contact: Patti Negrave (613) 759-6216 or see us at: <http://www.agr.ca/redmeat>

Prepared by: Red Meat Section, Agriculture and Agri-Food Canada