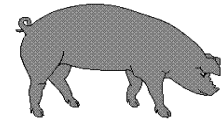




Hog Statistics at a Glance CANADA



For the Week Ending January 8, 2005

Federal Slaughter	weekly kill # head	CUMULATIVE TOTALS TO DATE		
		2005	2004	% chg
		'000 head		
West	170,513	171.0	146.0	17.1
Ontario	84,880	85.0	66.0	28.8
Quebec	173,387	173.0	89.0	94.4
Atlantic (estimated)	9,872	10.0	9.0	11.1
CANADA	438,652	439.0	310.0	41.6
Pork Production (t)	38,382	38,413	27,032	42.1
Estimated Sow Slaughter	2,309	2,309	1,245	85.5

Weekly Prices \$/kg (index 100)	2005	2004	% chg
	Ontario 102.5%	1.55	1.17
Quebec	1.50	1.16	29.3
Alberta	1.43	1.15	24.3
Manitoba*	1.49	1.25	19.2
British Columbia	1.73	1.24	39.5
Saskatchewan	1.39	1.12	24.1
Nova Scotia	1.44	1.15	25.2
Prince Ed. Is.	1.47	1.15	27.8
New Brunswick	1.40	1.11	26.1

*estimate

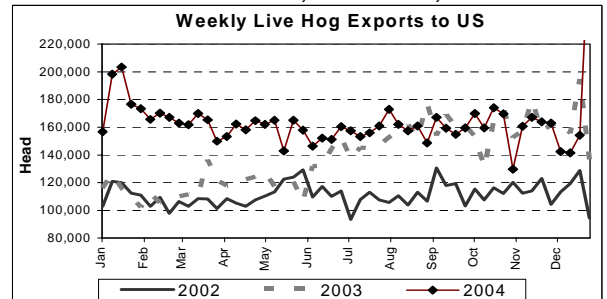
PORK EXPORTS YTD for the period of January to November

(Metric Tonnes)	2004	2003	% chg
FRESH, FROZEN AND PROCESSED PORK			
United States	376,857	415,149	(9.2)
Japan	187,760	178,470	5.2
Australia	31,400	33,204	(5.4)
Russia	18,600	23,340	(20.3)
Mexico	63,069	51,177	23.2
South Korea	28,874	27,691	4.3
China	33,527	23,643	41.8
Taiwan	21,831	18,811	16.1
Cuba	6,255	6,056	3.3
New Zealand	6,705	7,152	(6.3)
Other	97,438	65,647	48.4
Total	872,316	850,340	2.6

Source: STATISTICS CANADA

LIVE HOG EXPORTS TO U.S.

	YTD 04	YTD 03	% chg
HOGS (head)			
Barrows/Gilts/Sows	2,930,983	2,349,742	24.7
Feeder Pigs	5,598,481	4,767,348	17.4
Total	8,529,464	7,117,090	19.8
Week Ending 04-12-25 and 05-01-08 combined			
Barrows/Gilts/Sows	119,206	75,316	58.3
Feeder Pigs	180,645	119,539	51.1
Total	299,851	194,855	53.9



Source: USDA-APHIS

IMPORTS YTD for the week ending 04-12-25 & 05-01-01 combined.

(Metric Tonnes) preliminary	2004	2003	% chg
FRESH & FROZEN PORK			
United States	71,357	63,359	12.6
Denmark	983	4,157	-76.4
Other	127	1,440	-91.2

PROCESSED & OTHER PORK	2004	2003	% chg
United States	14,521	11,518	26.1
Denmark	-	6	-
Other	194	232	-16.4
TOTAL IMPORTS	87,182	80,712	8.0

Frozen Pork from the European Union:

The TRQ level has established for frozen meat of pork originating from EU countries, for the twelve month period August 1 to July 31, 2005. Imports in excess of 2,970,000 kg in the twelve month period are subject to a surtax in an amount equal to the value for the duty (100%) determined in accordance with the Customs Act.

	Permits issued as of January 8, 2005		
	2004/2005	2003/2004	% chg
Utilization (kg)	1,623,487	2,970,000	-45.3
Balance (kg)	1,346,513	-	-
% Utilization	54.7%	100.0%	(45.3)

Prepared by: Red Meat Section, Agriculture and Agri-Food Canada

Contact: Patti Negrave (613) 759-6216 or see us at: <http://www.agr.ca/redmeat>



Hog Statistics at a Glance CANADA

Canadian Hog Slaughter by Province of Origin

Total Slaughter Year to Date January 8, 2005

Week ending January 8, 2005

	2005	2004	% chg	2005	2004	% chg
British Columbia	4,257	4,462	-4.6	4,257	4,462	-4.6
Alberta	69,298	61,080	13.5	69,298	61,080	13.5
Saskatchewan	27,530	22,245	23.8	27,530	22,245	23.8
Manitoba	77,797	65,654	18.5	77,797	65,654	18.5
Ontario	105,245	78,736	33.7	105,245	78,736	33.7
Quebec	163,686	84,464	93.8	163,686	84,464	93.8
New Brunswick	2,837	2,970	-4.5	2,837	2,970	-4.5
Nova Scotia	4,075	3,430	18.8	4,075	3,430	18.8
Prince Edward Island	4,473	4,664	-4.1	4,473	4,664	-4.1
CANADA	459,198	327,705	40.1	459,198	327,705	40.1

UNITED STATES

Year To Date for the Week Ending January 8, 2005

Supply Summary

	2005	2004	% chg
Slaughter ('000 head)	1,989	2,665	-25.4
Slaughter for the week	1,989	2,011	-1.1
Avg Dressed Wt (lbs)	201	201	0.0
Pork Produced (mil lbs)	399	535	-25.4

Source: USDA-APHIS

Weekly US Prices (\$/cwt)

	2005	2004	% chg
South St. Joseph	52.75	36.75	43.5
Sioux Falls	53.17	37.20	42.9
Oklahoma City	46.33	34.83	33.0
National Cost	69.90	50.61	38.1

(51-54% Lean Yield Basis)

December 1 Inventory '000 Hogs and Pigs

	2004	2003	% chg
All Hogs and Pigs	60,501	60,444	0.1%
Kept for breeding	5,969	6,009	-0.7%
Market	54,531	54,434	0.2%

Market Hogs and Pigs by weight Group

	2004	2003	% chg
Under 60 lbs	19,636	19,778	-0.7%
60 - 119 lbs	13,439	13,238	1.5%
120 - 179 lbs	11,286	11,109	1.6%
180 lbs and Over	10,171	10,311	-1.4%

U.S. Quarterly Hogs and Pigs Inventory

