



Hog Statistics at a Glance CANADA



For the Week Ending July 15, 2006

Federal Slaughter

	weekly kill # head	CUMULATIVE TOTALS TO DATE		
		2006 '000 head	2005 '000 head	% chg
West	167,324	4,671.0	4,711.0	-0.8
Ontario	78,861	2,136.0	2,227.0	-4.1
Quebec	152,018	4,164.0	4,362.0	-4.5
Atlantic	7,134	218.0	238.0	-8.4
CANADA	405,337	11,189.0	11,538.0	-3.0
Pork Production (t)	35,467	979,038	1,006,114	-2.7
Estimated Sow Slaughter	2,788	77,475	64,744	19.7

Weekly Prices \$/kg (index 100)

	2006	2005	% chg
Ontario*	142.44	145.30	-2.0
Quebec	138.20	152.01	-9.1
Alberta	135.70	143.10	-5.2
Manitoba*	147.00	149.00	-1.3
British Columbia	158.40	158.00	0.3
Saskatchewan	138.50	147.30	-6.0
Nova Scotia	155.79	151.04	3.1
Prince Ed. Is.	151.16	142.91	5.8
New Brunswick	151.28	146.54	3.2

*estimate

PORK EXPORTS

YTD for the period of January - April

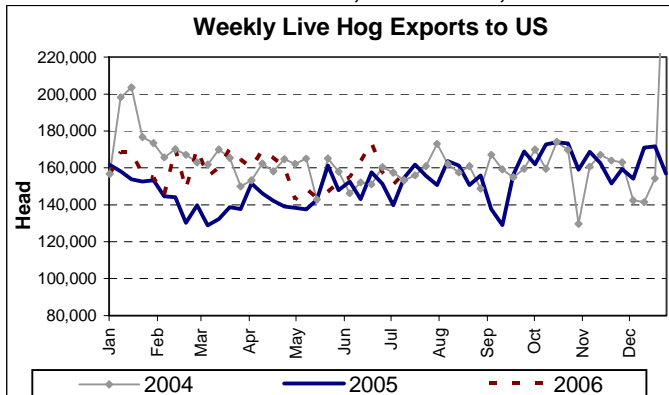
(Metric Tonnes)

FRESH, FROZEN AND PROCESSED PORK	2006	2005	% chg
United States	120,964	121,944	(0.8)
Japan	82,652	96,255	(14.1)
Australia	13,504	17,336	(22.1)
Russia	29,861	8,555	249.0
Mexico	16,172	20,840	(22.4)
South Korea	23,829	21,350	11.6
China	15,296	13,910	10.0
Taiwan	5,709	7,335	(22.2)
Cuba	3,047	738	312.9
New Zealand	2,525	1,759	43.5
Other	37,324	33,439	11.6
Total	350,883	343,461	2.2

Source: STATISTICS CANADA

LIVE HOG EXPORTS TO U.S.

	YTD 06	YTD 05	% chg
HOGS (head)			
Barrows/Gilts/Sows	1,331,941	1,328,591	0.3
Feeder Pigs	3,107,915	2,753,665	12.9
Total	4,439,856	4,082,256	8.8
Week Ending 06-07-15			
Barrows/Gilts/Sows	51,839	51,625	0.4
Feeder Pigs	105,191	103,055	2.1
Total	157,030	154,680	1.5



Source: USDA-APHIS

IMPORTS

YTD for the week ending 06-07-08

(Metric Tonnes) preliminary

FRESH & FROZEN PORK	2006	2005	% chg
United States	46,080	44,293	4.0
Denmark (REVISIONS)	-	340	
Other	1	27	-96.3

PROCESSED & OTHER PORK

	2006	2005	% chg
United States	9,342	7,839	19.2
Denmark	-	-	
Other	209	93	124.7
TOTAL IMPORTS	55,632	52,592	5.8

Frozen Pork from the European Union:

The TRQ level has established for frozen meat of pork originating from EU countries, for the twelve month period August 1 to July 31, 2006. Imports in excess of 2,970,000 kg in the twelve month period are subject to a surtax in an amount equal to the value for the duty (100%) determined in accordance with the Customs Act.

	Permits issued as of July 15, 2006		
	2005/2006	2004/2005	% chg
Utilization (kg)	2,969,900	2,969,899	0.0
Balance (kg)	100	101	-1.0
% Utilization	100.0%	100.0%	0.0

Prepared by: Red Meat Section, Agriculture and Agri-Food Canada

Contact: Patti Negrave (613) 759-6216 or see us at: <http://www.agr.ca/redmeat>



Hog Statistics at a Glance CANADA

Canadian Hog Slaughter by Province of Origin

Total Slaughter Year to Date July 15, 2006

Week ending July 15, 2006

	2006	2005	% chg	2006	2005	% chg
British Columbia	109,206	124,354	-12.2	2,537	4,538	-44.1
Alberta	2,100,436	1,877,205	11.9	73,352	69,199	6.0
Saskatchewan	590,010	696,767	-15.3	22,537	22,526	0.0
Manitoba	2,087,048	2,232,372	-6.5	75,669	76,497	-1.1
Ontario	2,730,749	2,821,859	-3.2	101,606	97,667	4.0
Quebec	3,802,430	3,973,967	-4.3	140,111	133,503	4.9
New Brunswick	69,644	82,886	-16.0	2,187	3,084	-29.1
Nova Scotia	97,780	97,778	0.0	2,780	3,499	-20.5
Prince Edward Island	106,220	115,057	-7.7	3,781	3,587	5.4
CANADA	11,693,523	12,022,245	-2.7	424,560	414,100	2.5

UNITED STATES

Year To Date for the Week Ending July 15, 2006

Supply Summary

	2006	2005	% chg
Slaughter ('000 head)	53,984	53,921	0.1
Slaughter for the week	1,954	1,869	4.5
Avg Dressed Wt (lbs)	200	197	1.5
Pork Produced (mil lbs)	10,952	10,828	1.1

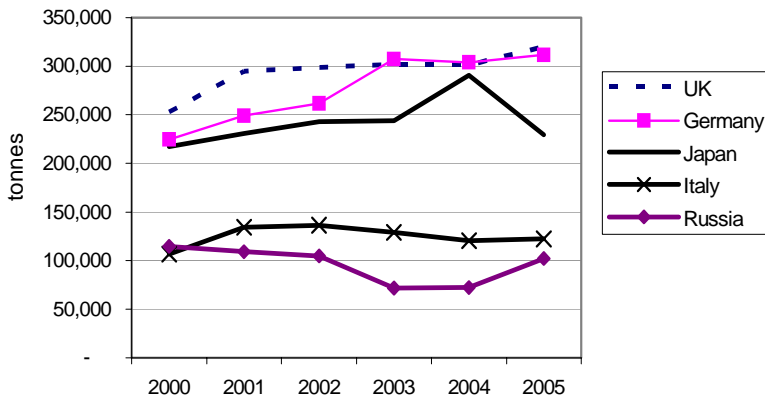
Source: USDA-APHIS

Weekly US Prices (\$/cwt)

	2006	2005	% chg
South St. Joseph	n/a	47.75	
Sioux Falls	51.00	47.45	7.5
Oklahoma City	45.00	46.00	-2.2
National Cost	67.99	67.57	0.6

(51-54% Lean Yield Basis)

Leading Markets for Danish Pork Exports



Danish Pork Production

