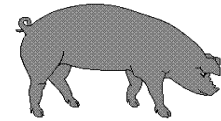




Hog Statistics at a Glance CANADA



For the Week Ending June 4, 2005

Federal Slaughter	weekly kill # head	CUMULATIVE TOTALS TO DATE		
		2005	2004	% chg
		'000 head		
West	169,773	3,746.0	3,573.0	4.8
Ontario	82,259	1,779.0	1,751.0	1.6
Quebec	155,590	3,526.0	3,454.0	2.1
Atlantic	8,045	189.0	210.0	-10.0
CANADA	415,667	9,240.0	8,988.0	2.8
Pork Production (t)	36,371	808,500	783,754	3.2
Estimated Sow Slaughter	2,233	51,587	55,357	-6.8

Weekly Prices \$/c/kg (index 100)	2005		
	2005	2004	% chg
Ontario*	161.82	202.88	-20.2
Quebec	157.41	202.85	-22.4
Alberta	147.70	190.00	-22.3
Manitoba*	159.00	196.00	-18.9
British Columbia	170.11	220.60	-22.9
Saskatchewan	138.70	177.30	-21.8
Nova Scotia	173.61	206.18	-15.8
Prince Ed. Is.	163.69	204.59	-20.0
New Brunswick	169.11	201.68	-16.1

*estimate

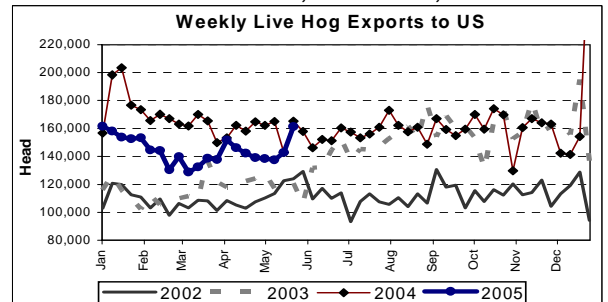
PORK EXPORTS YTD for the period of January to March 31, 2005

(Metric Tonnes)	2005	2004	% chg
FRESH, FROZEN AND PROCESSED PORK			
United States	91,697	102,441	(10.5)
Japan	61,696	54,296	13.6
Australia	13,098	8,699	50.6
Russia	6,128	3,787	61.8
Mexico	15,477	14,277	8.4
South Korea	16,003	7,391	116.5
China	8,557	7,342	16.5
Taiwan	5,281	6,298	(16.1)
Cuba	368	2,536	(85.5)
New Zealand	1,312	1,160	13.1
Other	24,119	22,653	6.5
Total	243,736	230,880	5.6

Source: STATISTICS CANADA

LIVE HOG EXPORTS TO U.S.

	YTD 05	YTD 04	% chg
HOGS (head)			
Barrows/Gilts/Sows	982,040	1,183,940	-17.1
Feeder Pigs	2,053,010	2,311,404	-11.2
Total	3,035,050	3,495,344	-13.2
Week Ending 05-05-29			
Barrows/Gilts/Sows	47,941	52,264	-8.3
Feeder Pigs	113,332	112,855	0.4
Total	161,273	165,119	-2.3



Source: USDA-APHIS

IMPORTS YTD for the week ending 05-05-29

(Metric Tonnes) preliminary	2005	2004	% chg
FRESH & FROZEN PORK			
United States	32,361	29,767	8.7
Denmark	249	251	-0.8
Other	27	3	

PROCESSED & OTHER PORK	2005	2004	% chg
United States	6,263	6,036	3.8
Denmark	-	-	
Other	46	64	-28.1
TOTAL IMPORTS	38,946	36,121	7.8

Frozen Pork from the European Union:

The TRQ level has established for frozen meat of pork originating from EU countries, for the twelve month period August 1 to July 31, 2005. Imports in excess of 2,970,000 kg in the twelve month period are subject to a surtax in an amount equal to the value for the duty (100%) determined in accordance with the Customs Act.

	Permits issued as of June 4, 2005		
	2004/2005	2003/2004	% chg
Utilization (kg)	2,969,899	2,970,000	0.0
Balance (kg)	101	-	
% Utilization	100.0%	100.0%	(0.0)

Prepared by: Red Meat Section, Agriculture and Agri-Food Canada

Contact: Patti Negrave (613) 759-6216 or see us at: <http://www.agr.ca/redmeat>



Hog Statistics at a Glance CANADA

Canadian Hog Slaughter by Province of Origin

Total Slaughter Year to Date June 4, 2005

Week ending June 4, 2005

	2005	2004	% chg	2005	2004	% chg
British Columbia	97,506	104,360	-6.6	4,303	4,027	6.9
Alberta	1,475,496	1,453,683	1.5	68,467	54,975	24.5
Saskatchewan	563,291	564,256	-0.2	23,463	21,820	7.5
Manitoba	1,780,006	1,638,411	8.6	79,465	62,920	26.3
Ontario	2,247,671	2,196,203	2.3	96,443	81,544	18.3
Quebec	3,209,842	3,200,696	0.3	142,798	119,304	19.7
New Brunswick	67,347	67,230	0.2	3,604	3,218	12.0
Nova Scotia	74,212	84,734	-12.4	3,383	3,862	-12.4
Prince Edward Island	91,449	96,733	-5.5	3,986	3,588	11.1
CANADA	9,606,820	9,406,306	2.1	425,912	355,258	19.9

UNITED STATES

Year To Date for the Week Ending June 4, 2005

Supply Summary

	2005	2004	% chg
Slaughter ('000 head)	42,860	43,128	-0.6
Slaughter for the week	1,653	1,632	1.3
Avg Dressed Wt (lbs)	202	199	1.5
Pork Produced (mil lbs)	8,629	8,605	0.3

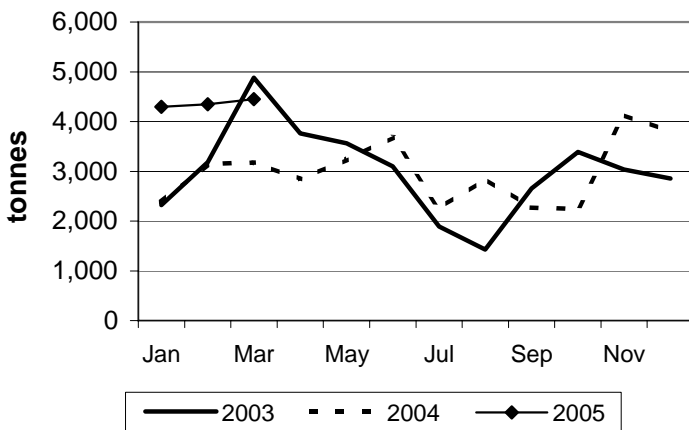
Source: USDA-APHIS

Weekly US Prices (\$/cwt)

	2005	2004	% chg
South St. Joseph	46.25	53.00	-12.7
Sioux Falls	48.25	54.50	-11.5
Oklahoma City	45.50	51.83	-12.2
National Cost	66.79	80.05	-16.6

(51-54% Lean Yield Basis)

Canadian Pork Exports to Australia



U.S. Pork Exports to Australia

