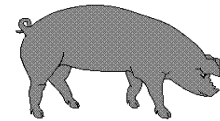




Hog Statistics at a Glance CANADA



For the Week Ending June 19, 2004

Federal Slaughter	weekly kill # head	CUMULATIVE TOTALS TO DATE		
		2004	2003	% chg
		'000 head		
West	163,470	4,066.0	4,199.0	-3.2
Ontario	79,301	1,991.0	2,050.0	-2.9
Quebec	156,213	3,930.0	3,838.0	2.4
Atlantic	9,142	238.0	245.0	-2.9
CANADA	408,126	10,225.0	10,332.0	-1.0
Pork Production (t)	35,711	894,688	900,950	-0.7
Estimated Sow Slaughter	2,267	62,411	79,070	-21.1

Weekly Prices \$/kg (index 100)	2004			2003			% chg
	2004	2003	% chg	2004	2003	% chg	
Ontario 102.5%	2.01	1.68	19.6	2.01	1.59	26.4	
Quebec	2.01	1.59	26.4	1.90	1.59	19.5	
Alberta	1.90	1.59	19.5	1.95	1.67	16.8	
Manitoba*	1.95	1.67	16.8	2.06	1.74	18.4	
British Columbia	2.06	1.74	18.4	1.79	1.53	17.0	
Saskatchewan	1.79	1.53	17.0	1.97	1.63	20.9	
Nova Scotia	1.97	1.63	20.9	1.94	1.66	16.9	
Prince Ed. Is.	1.94	1.66	16.9	1.92	1.59	20.8	
New Brunswick	1.92	1.59	20.8				

*estimate

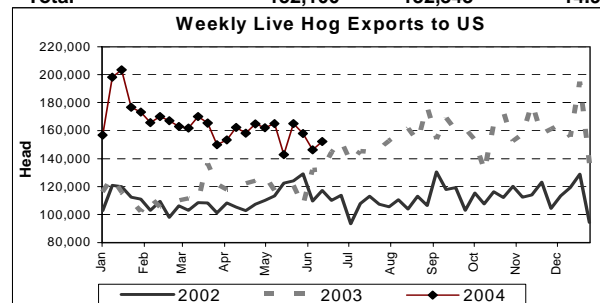
PORK EXPORTS YTD for the period of January to April

(Metric Tonnes)	2004	2003	% chg
FRESH, FROZEN AND PROCESSED PORK			
United States	133,787	145,804	(8.2)
Japan	72,430	67,042	8.0
Australia	10,796	14,143	(23.7)
Russia	4,583	12,368	(62.9)
Mexico	20,311	14,813	37.1
South Korea	9,803	11,557	(15.2)
China	9,215	8,615	7.0
Taiwan	8,174	5,835	40.1
Cuba	3,467	2,627	32.0
New Zealand	1,503	2,479	(39.4)
Other	34,214	23,586	45.1
Total	308,283	308,869	(0.2)

Source: STATISTICS CANADA

LIVE HOG EXPORTS TO U.S.

	YTD 04	YTD 03	% chg
HOGS (head)			
Barrows/Gilts/Sows	1,329,715	762,911	74.3
Feeder Pigs	2,621,943	2,088,105	25.6
Total	3,951,658	2,851,016	38.6
Week Ending 04-06-12			
Barrows/Gilts/Sows	48,241	35,438	36.1
Feeder Pigs	103,859	96,905	7.2
Total	152,100	132,343	14.9



Source: USDA-APHIS

IMPORTS YTD for the week ending June 12, 2004

(Metric Tonnes) preliminary	2004	2003	% chg
FRESH & FROZEN PORK			
United States	32,978	25,563	29.0
Denmark	288	1,315	-78.1
Other	3	526	-99.4

PROCESSED & OTHER PORK

	2004	2003	% chg
United States	6,787	4,877	39.2
Denmark	-	6	
Other	42	63	-33.3
TOTAL IMPORTS	40,098	32,350	24.0

Frozen Pork from the European Union:

The TRQ level has established for frozen meat of pork originating from EU countries, for the twelve month period August 1 to July 31, 2004. Imports in excess of 2,970,000 kg in the twelve month period are subject to a surtax in an amount equal to the value for the duty (100%) determined in accordance with the Customs Act. Effective as of October 3, 2003 the frozen pork TRQ from the EU imported under tariff item No. 0203.29.00 of the Customs Tariff has filled and therefore all frozen pork imports from the EU, until July 31, 2004, will be subject to the European Union Surtax Order.

	Permits issued as of June 19, 2004		
	2003/2004	2002/2003	% chg
Utilization (kg)	2,969,000	2,962,582	0.2
Balance (kg)	1,002	7,418	
% Utilization	100.0%	99.8%	0.2

Prepared by: Red Meat Section, Agriculture and Agri-Food Canada

Contact: Patti Negrave (613) 759-6216 or see us at: <http://www.agr.ca/redmeat>



Hog Statistics at a Glance CANADA

Canadian Hog Slaughter by Province of Origin

Total Slaughter Year to Date June 19, 2004

Week ending June 19, 2004

	2004			2003			% chg
	2004	2003	% chg	2004	2003	% chg	
British Columbia	118,415	122,896	-3.6	4,687	4,767	-1.7	
Alberta	1,653,574	1,712,792	-3.5	66,401	67,806	-2.1	
Saskatchewan	639,376	666,486	-4.1	25,276	25,504	-0.9	
Manitoba	1,862,206	1,922,179	-3.1	74,505	68,097	9.4	
Ontario	2,494,230	2,648,707	-5.8	100,068	103,298	-3.1	
Quebec	3,635,775	3,511,351	3.5	141,254	140,476	0.6	
New Brunswick	77,337	86,700	-10.8	3,642	4,052	-10.1	
Nova Scotia	95,422	100,718	-5.3	3,669	3,631	1.0	
Prince Edward Island	109,319	102,860	6.3	4,077	4,139	-1.5	
CANADA	10,685,654	10,874,689	-1.7	423,579	421,770	0.4	

UNITED STATES

Year To Date for the Week Ending June 19, 2004

Supply Summary

	2004	2003	% chg
Slaughter ('000 head)	46,823	45,729	2.4
Slaughter for the week	1,896	1,794	5.7
Avg Dressed Wt (lbs)	199	198	0.5
Pork Produced (mil lbs)	9,360	9,090	3.0

Source: USDA-APHIS

Weekly US Prices (\$/cwt)

	2004	2003	% chg
South St. Joseph	52.25	45.75	14.2
Sioux Falls	55.00	45.80	20.1
Oklahoma City	52.50	44.33	18.4
National Cost	79.82	66.82	19.5

(51-54% Lean Yield Basis)

LEADING MARKETS FOR U.S. PORK PLUS PORK VARIETY MEAT EXPORTS (January-April 2004)

COUNTRY	Year to date Quantity (Metric Tons)			COUNTRY	Year to date Quantity (Metric Tons)		
	1/04 - 4/04	1/03 - 4/03	% Chg		1/04 - 4/04	1/03 - 4/03	% Chg
Japan	104,332	96,981	7.6	Taiwan	17,415	7,272	139.5
Mexico	110,200	55,912	97.1	Central & South America	7,267	4,873	49.1
Canada	41,406	27,261	51.9	Korea	9,121	11,369	-19.8
China	11,924	9,174	30.0	Caribbean	2,730	1,473	85.3
Hong Kong	8,480	6,972	21.6	Eastern Europe	1,844	1,015	81.7
Russia	5,782	3,016	91.7				
European Union	3,773	4,254	-11.3	World Total	328,695	232,839	41.2

Source: FAS, USDA