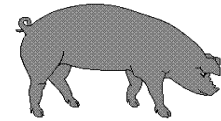




# Hog Statistics at a Glance CANADA



For the Week Ending June 25, 2005

Federal Slaughter	weekly kill # head	CUMULATIVE TOTALS TO DATE		
		2005	2004	% chg
		'000 head		
West	166,472	4,248.0	4,066.0	4.5
Ontario	75,096	2,008.0	1,991.0	0.9
Quebec	127,763	3,943.0	3,930.0	0.3
Atlantic	8,686	215.0	238.0	-9.7
<b>CANADA</b>	<b>378,017</b>	<b>10,414.0</b>	<b>10,225.0</b>	<b>1.8</b>
<b>Pork Production (t)</b>	<b>33,076</b>	<b>911,225</b>	<b>891,620</b>	<b>2.2</b>
<b>Estimated Sow Slaughter</b>	<b>2,077</b>	<b>58,632</b>	<b>62,346</b>	<b>-6.0</b>

Weekly Prices \$/c/kg (index 100)	2005			2004			% chg
	2005	2004	% chg	2005	2004	% chg	
Ontario*	157.37	197.54	-20.3				
Quebec	154.89	201.40	-23.1				
Alberta	147.20	189.50	-22.3				
Manitoba*	156.00	195.00	-20.0				
British Columbia	167.40	206.00	-18.7				
Saskatchewan	137.30	178.90	-23.3				
Nova Scotia	157.02	196.51	-20.1				
Prince Ed. Is.	148.40	194.39	-23.7				
New Brunswick	152.52	192.01	-20.6				

\*estimate

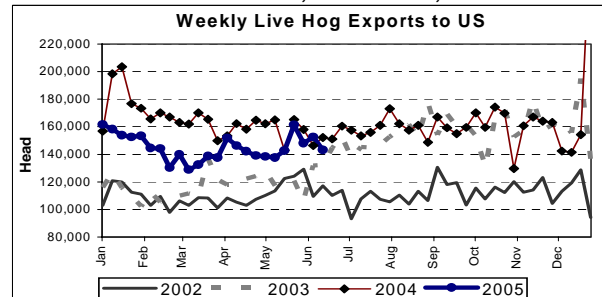
## PORK EXPORTS YTD for the period of January to April 31, 2005

(Metric Tonnes)	2005	2004	% chg
<b>FRESH, FROZEN AND PROCESSED PORK</b>			
United States	121,964	133,757	(8.8)
Japan	96,134	72,703	32.2
Australia	17,303	11,540	49.9
Russia	8,257	4,621	78.7
Mexico	19,908	20,571	(3.2)
South Korea	21,035	9,803	114.6
China	13,686	9,289	47.3
Taiwan	7,065	8,291	(14.8)
Cuba	738	3,496	(78.9)
New Zealand	1,759	1,503	17.0
Other	32,736	28,681	14.1
<b>Total</b>	<b>340,585</b>	<b>304,255</b>	<b>11.9</b>

Source: STATISTICS CANADA

## LIVE HOG EXPORTS TO U.S.

	YTD 05	YTD 04	% chg
<b>HOGS (head)</b>			
Barrows/Gilts/Sows	1,126,030	1,329,715	-15.3
Feeder Pigs	2,352,659	2,621,943	-10.3
<b>Total</b>	<b>3,478,689</b>	<b>3,951,658</b>	<b>-12.0</b>
<b>Week Ending 05-06-18</b>			
Barrows/Gilts/Sows	47,123	48,241	-2.3
Feeder Pigs	96,066	103,859	-7.5
<b>Total</b>	<b>143,189</b>	<b>152,100</b>	<b>-5.9</b>



Source: USDA-APHIS

## IMPORTS YTD for the week ending 05-06-18

(Metric Tonnes) preliminary	2005	2004	% chg
<b>FRESH &amp; FROZEN PORK</b>			
United States	38,922	33,698	15.5
Denmark	1,639	288	469.1
Other	27	3	

PROCESSED & OTHER PORK	2005	2004	% chg
United States	7,002	7,022	-0.3
Denmark	-	-	
Other	47	68	-30.9
<b>TOTAL IMPORTS</b>	<b>47,637</b>	<b>41,079</b>	<b>16.0</b>

## Frozen Pork from the European Union:

The TRQ level has established for frozen meat of pork originating from EU countries, for the twelve month period August 1 to July 31, 2005. Imports in excess of 2,970,000 kg in the twelve month period are subject to a surtax in an amount equal to the value for the duty (100%) determined in accordance with the Customs Act.

	Permits issued as of June 25, 2005		
	2004/2005	2003/2004	% chg
Utilization (kg)	2,969,899	2,970,000	0.0
Balance (kg)	101	-	
% Utilization	100.0%	100.0%	(0.0)

Prepared by: Red Meat Section, Agriculture and Agri-Food Canada

Contact: Patti Negrave (613) 759-6216 or see us at: <http://www.agr.ca/redmeat>