



Hog Statistics at a Glance CANADA



For the Week Ending October 7, 2006

Federal Slaughter

	weekly kill # head	CUMULATIVE TOTALS TO DATE		
		2006 '000 head	2005 '000 head	% chg
West	169,482	6,613.0	6,647.0	-0.5
Ontario	84,647	3,055.0	3,198.0	-4.5
Quebec	157,586	5,989.0	6,187.0	-3.2
Atlantic	7,711	308.0	332.0	-7.2
CANADA	419,426	15,965.0	16,364.0	-2.4
Pork Production (t)	36,700	1,396,938	1,426,941	-2.1
Estimated Sow Slaughter	2,663	110,912	93,008	19.2

Weekly Prices \$/kg (index 100)

	2006	2005	% chg
Ontario*	127.59	146.08	-12.7
Quebec	114.59	145.30	-21.1
Alberta	122.20	139.40	-12.3
Manitoba*	138.00	148.00	-6.8
British Columbia	143.00	159.70	-10.5
Saskatchewan	126.50	142.30	-11.1
Nova Scotia	133.87	144.70	-7.5
Prince Ed. Is.	133.64	138.33	-3.4
New Brunswick	129.37	140.20	-7.7

*estimate

PORK EXPORTS

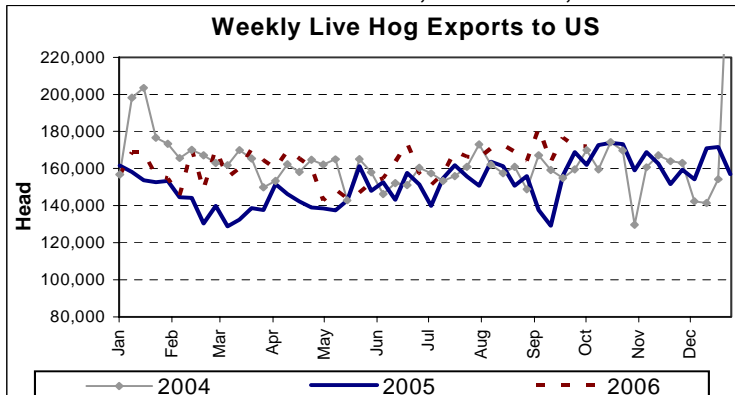
YTD for the period of January - August

(Metric Tonnes)	2006	2005	% chg
FRESH, FROZEN AND PROCESSED PORK			
United States	239,993	249,815	(3.9)
Japan	145,355	189,246	(23.2)
Australia	22,355	24,802	(9.9)
Russia	60,098	19,403	209.7
Mexico	32,212	41,600	(22.6)
South Korea	44,096	40,267	9.5
China	28,484	30,705	(7.2)
Taiwan	8,327	13,241	(37.1)
Cuba	5,279	3,773	39.9
New Zealand	5,395	4,069	32.6
Other	82,031	65,951	24.4
Total	673,625	682,872	(1.4)

Source: STATISTICS CANADA

LIVE HOG EXPORTS TO U.S.

	YTD 06	YTD 05	% chg
HOGS (head)			
Barrows/Gilts/Sows	1,965,391	2,021,166	-2.8
Feeder Pigs	4,518,447	3,914,877	15.4
Total	6,483,838	5,936,043	9.2
Week Ending 06-10-07			
Barrows/Gilts/Sows	56,369	68,081	-17.2
Feeder Pigs	115,575	93,884	23.1
Total	171,944	161,965	6.2



Source: USDA-APHIS

IMPORTS

YTD for the week ending 06-09-30

(Metric Tonnes) preliminary	2006	2005	% chg
FRESH & FROZEN PORK			
United States	65,259	63,326	3.1
Denmark (REVISIONS)	81	352	-77.0
Other	1	28	-96.4

PROCESSED & OTHER PORK

	2006	2005	% chg
United States	14,054	12,806	9.7
Denmark	-	-	-
Other	1,863	149	1150.3
TOTAL IMPORTS	81,258	76,661	6.0

Frozen Pork from the European Union:

The TRQ level has established for frozen meat of pork originating from EU countries, for the twelve month period August 1 to July 31, 2007. Imports in excess of 2,970,000 kg in the twelve month period are subject to a surtax in an amount equal to the value for the duty (100%) determined in accordance with the Customs Act.

	Permits issued as of October 7, 2006		
	2006/2007	2005/2006	% chg
Utilization (kg)	2,966,125	1,421,202	108.7
Balance (kg)	3,875	1,548,798	-99.7
% Utilization	99.9%	47.9%	108.7

Prepared by: Red Meat Section, Agriculture and Agri-Food Canada

Contact: Patti Negrave (613) 759-6216 or see us at: <http://www.agr.ca/redmeat>



Hog Statistics at a Glance CANADA

Canadian Hog Slaughter by Province of Origin

Total Slaughter Year to Date October 7, 2006

Week ending October 7, 2006

	2006	2005	% chg	2006	2005	% chg
British Columbia	160,739	178,374	-9.9	4,883	4,603	6.1
Alberta	2,930,824	2,689,424	9.0	72,930	67,786	7.6
Saskatchewan	853,738	951,370	-10.3	22,466	22,371	0.4
Manitoba	2,971,352	3,143,429	-5.5	78,554	75,996	3.4
Ontario	3,889,225	4,056,346	-4.1	106,536	111,449	-4.4
Quebec	5,481,908	5,636,333	-2.7	145,964	143,074	2.0
New Brunswick	100,743	115,910	-13.1	3,439	2,445	40.7
Nova Scotia	137,295	142,636	-3.7	3,467	4,501	-23.0
Prince Edward Island	152,204	157,876	-3.6	3,782	3,698	2.3
CANADA	16,678,028	17,071,698	-2.3	442,021	435,923	1.4

UNITED STATES

Year To Date for the Week Ending October 7, 2006

Supply Summary

	2006	2005	% chg
Slaughter ('000 head)	78,102	77,464	0.8
Slaughter for the week	2,159	2,142	0.8
Avg Dressed Wt (lbs)	198	199	-0.5
Pork Produced (mil lbs)	15,688	15,452	1.5

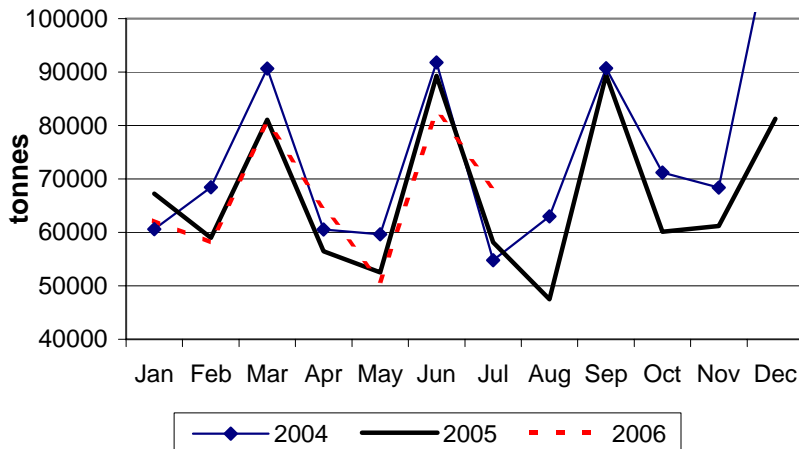
Source: USDA-APHIS

Weekly US Prices (\$/cwt)

	2006	2005	% chg
South St. Joseph	43.75	48.50	-9.8
Sioux Falls	44.00	49.10	-10.4
Oklahoma City	41.00	44.00	-6.8
National Cost	64.37	67.27	-4.3

(51-54% Lean Yield Basis)

Monthly Canadian Pork Disappearance



% chg in Canadian Pork Disappearance year over year

