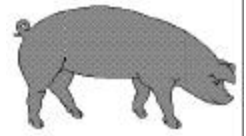




Hog Statistics at a Glance CANADA



For the Week Ending October 12, 2002

Federal Slaughter	weekly kill # head	CUMULATIVE TOTALS TO DATE			Weekly Prices \$/kg (index 100)			
		2002 '000 head	2001 '000 head	% chg	2002	2001	% chg	
West	177,090	6,361.0	5,766.0	10.3	Ontario 102.5%	1.33	1.74	-23.6
Ontario	81,933	3,089.0	2,845.0	8.6	Quebec	1.29	1.65	-21.8
Quebec	164,517	6,297.0	6,061.0	3.9	Alberta	1.27	1.59	-20.1
Atlantic	10,041	412.0	403.0	2.2	Manitoba*	1.32	1.66	-20.5
CANADA	433,581	16,159.0	15,075.0	7.2	British Columbia	1.38	1.91	-27.7
					Saskatchewan	1.25	1.55	-19.4
					Nova Scotia	1.27	1.28	-0.8
Pork Production (t)	37,006	1,413,913	1,310,018	7.9	Prince Ed. Is.	1.28	1.70	-24.7
Estimated Sow Slaughter	3,161	130,004	148,592	-12.5	New Brunswick	1.22	1.77	-31.1

*estimate

PORK EXPORTS

YTD for week ending August 17, 2002

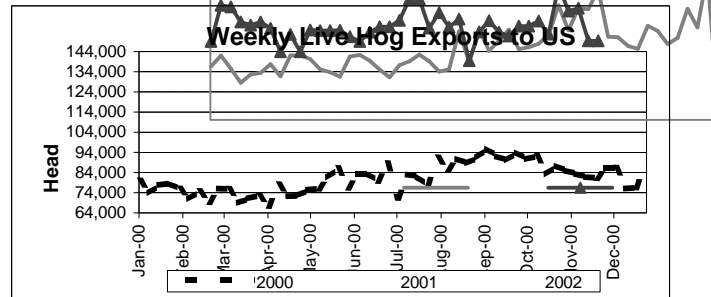
(Metric Tonnes)	2002	2001	% chg
FRESH & FROZEN PORK			
United States	n/a	193,169	
Japan	124,856	112,315	11.2
Mexico	27,092	33,836	-19.9
Korea	20,873	18,524	12.7
Other	90,277	99,581	-9.3
PROCESSED PORK			
United States	n/a	36,383	
Japan	1,164	789	47.5
Mexico	780	260	200.0
Korea	2	2	0.0
Other	4,548	4,465	1.9

TOTAL FAT EXPORTS n/a 41,128

Source: CFIA & USDA

LIVE HOG EXPORTS TO U.S.

	YTD 02	YTD 01	% chg
HOGS (head)			
Barrows/Gilts/Sows	1,444,206	1,527,488	-5.5
Feeder Pigs	2,956,088	2,362,971	25.1
Total	4,400,294	3,890,459	13.1
Week Ending 02-10-05			
Barrows/Gilts/Sows	27,024	46,554	-42.0
Feeder Pigs	88,472	82,192	7.6
Total	115,496	128,746	-10.3



Source: USDA-APHIS

IMPORTS

YTD for the week ending October 5

(Metric Tonnes) preliminary	2002	2001	% chg
FRESH & FROZEN PORK			
United States	54,806	40,128	36.6
Denmark	364	1,634	-77.7
Other	114	136	-16.2

PROCESSED & OTHER PORK

	2002	2001	% chg
United States	8,181	8,704	-6.0
Denmark	-	2	
Other	172	264	-34.8
TOTAL IMPORTS	63,637	50,868	25.1

Frozen Pork from the European Union:

The TRQ level has established for frozen meat of pork originating from EU countries, for the twelve month period August 1 to July 31. Imports in excess of 2,970,000 kg in the twelve month period are subject to a surtax in an amount equal to the value for the duty (100%) determined in accordance with the Customs Act. In 2001/02 the Tariff Rate Quota was reached on October 2, 2002.

	Permits issued as of October 9, 2002		
	2003/04	2002/02	% chg
Utilization (kg)	675,780	2,969,839	-77.2
Balance (kg)	2,294,220	2,970,000	-22.8
% Utilization	22.8%	100.0%	(77.2)

Prepared by: Red Meat Section, Agriculture and Agri-Food Canada

Contact: Patti Negrave (613) 759-6216 or see us at: <http://www.agr.ca/redmeat>



Hog Statistics at a Glance CANADA

Canadian Hog Slaughter by Province of Origin

Total Slaughter Year to Date October 12, 2002

Week ending October 12, 2002

	2002	2001	% chg	2002	2001
British Columbia	195,159	172,123	13.4	5,387	4,393
Alberta	2,641,000	2,340,674	12.8	74,788	53,484
Saskatchewan	1,109,200	915,993	21.1	29,958	23,147
Manitoba	2,782,839	2,684,671	3.7	76,485	59,889
Ontario	4,107,578	3,844,695	6.8	107,161	93,458
Quebec	5,686,534	5,436,671	4.6	149,485	131,704
New Brunswick	159,571	173,072	-7.8	3,853	4,790
Nova Scotia	178,214	177,039	0.7	3,994	4,403
Prince Edward Island	169,606	162,951	4.1	4,169	4,175
CANADA	17,029,701	15,907,889	7.1	455,280	379,443

UNITED STATES

Year To Date for the Week Ending October 12, 2002

Supply Summary

	2002	2001	% chg
Slaughter ('000 head)	76,176	74,365	2.4
Slaughter for the week	2,005	2,018	-0.6
Avg Dressed Wt (lbs)	194	198	-2.0
Pork Produced (mil lbs)	14,937	14,506	3.0

Source: USDA-APHIS

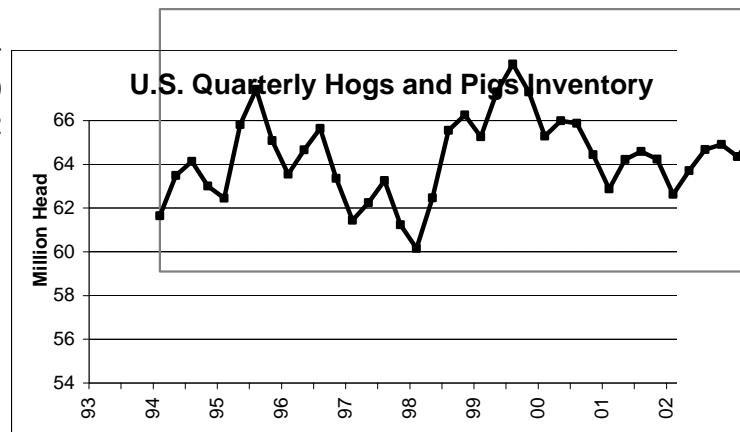
Weekly US Prices (\$/cwt)

	2002	2001
South St. Joseph	n/a	n/a
Sioux Falls	n/a	40.50
Lancaster County	n/a	41.25
National Cost	44.47	58.35

(51-54% Lean Yield Basis)

September 1 Inventory '000 Hogs and pigs

	2002	2001	%chg
All Hogs and Pigs	60,220	59,777	0.74
Kept for Breeding	6,054	6,158	-1.69
Market	54,165	53,619	1.02
Market Hogs and Pigs by Weight Group			
Under 60 lbs	19,684	19,911	-1.14
60 - 119 lbs	13,409	13,438	-0.22
120 - 179 lbs	11,146	10,854	2.69
180 lbs and over	9,926	9,417	5.41
Sows Farrowing (Intentions)			
Jun - Aug	2,834	2,878	-1.5
Sep - Nov	2,818	2,889	-2.5
Jun - Nov	5,652	5,767	-2.0



Source: Quarterly Hogs and Pigs, NASS, USDA.

Contact: Patti Negrave (613) 759-6216 or see us at: <http://www.agr.ca/redmeat>

Prepared by: Red Meat Section, Agriculture and Agri-Food Canada

2002

% chg

22.6
39.8
29.4
27.7
14.7
13.5
-19.6
-9.3
-0.1
20.0

% chg

-
-23.8

