



# Hog Statistics at a Glance CANADA



For the Week Ending September 10, 2005

## Federal Slaughter

	weekly kill # head	CUMULATIVE TOTALS TO DATE		
		2005 '000 head	2004 '000 head	% chg
West	134,332	5,980.0	5,842.0	2.4
Ontario	72,118	2,859.0	2,899.0	-1.4
Quebec	134,727	5,550.0	5,657.0	-1.9
Atlantic	7,718	300.0	339.0	-11.5
<b>CANADA</b>	<b>348,895</b>	<b>14,689.0</b>	<b>14,737.0</b>	<b>-0.3</b>
<b>Pork Production (t)</b>	<b>30,528</b>	<b>1,285,288</b>	<b>1,285,066</b>	<b>0.0</b>
<b>Estimated Sow Slaughter</b>	<b>1,857</b>	<b>83,175</b>	<b>86,674</b>	<b>-4.0</b>

## Weekly Prices \$/kg (index 100)

	2005	2004	% chg
Ontario*	142.01	164.59	-13.7
Quebec	145.22	176.37	-17.7
Alberta	135.20	166.10	-18.6
Manitoba*	148.00	172.00	-14.0
British Columbia	162.80	186.30	-12.6
Saskatchewan	130.50	158.00	-17.4
Nova Scotia	155.89	180.12	-13.5
Prince Ed. Is.	145.83	170.75	-14.6
New Brunswick	151.39	175.62	-13.8

\*estimate

## PORK EXPORTS

YTD for the period of January to July, 2005

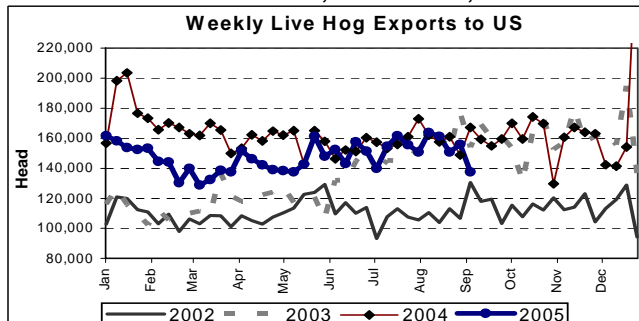
(Metric Tonnes)

FRESH, FROZEN AND PROCESSED PORK	2005	2004	% chg
United States	216,726	234,998	(7.8)
Japan	162,383	130,887	24.1
Australia	22,967	20,699	11.0
Russia	15,237	6,904	120.7
Mexico	36,521	39,327	(7.1)
South Korea	34,254	18,011	90.2
China	26,465	20,797	27.3
Taiwan	11,369	12,397	(8.3)
Cuba	3,319	4,674	(29.0)
New Zealand	3,566	3,527	1.1
Other	58,099	48,826	19.0
<b>Total</b>	<b>590,906</b>	<b>541,047</b>	<b>9.2</b>

Source: STATISTICS CANADA

## LIVE HOG EXPORTS TO U.S.

	YTD 05	YTD 04	% chg
<b>HOGS (head)</b>			
Barrows/Gilts/Sows	1,770,797	1,887,426	-6.2
Feeder Pigs	3,548,913	3,805,715	-6.7
<b>Total</b>	<b>5,319,710</b>	<b>5,693,141</b>	<b>-6.6</b>
<b>Week Ending 05-09-10</b>			
Barrows/Gilts/Sows	57,333	52,114	10.0
Feeder Pigs	80,294	96,674	-16.9
<b>Total</b>	<b>137,627</b>	<b>148,788</b>	<b>-7.5</b>



## IMPORTS

YTD for the week ending 05-09-03

(Metric Tonnes) preliminary

FRESH & FROZEN PORK	2005	2004	% chg
United States	54,891	46,584	17.8
Denmark	1,650	634	160.3
Other	27	3	800.0

## PROCESSED & OTHER PORK

	2005	2004	% chg
United States	9,825	9,096	8.0
Denmark	-	-	-
Other	98	122	-19.7
<b>TOTAL IMPORTS</b>	<b>66,491</b>	<b>56,439</b>	<b>17.8</b>

## Frozen Pork from the European Union:

The TRQ level has established for frozen meat of pork originating from EU countries, for the twelve month period August 1 to July 31, 2006. Imports in excess of 2,970,000 kg in the twelve month period are subject to a surtax in an amount equal to the value for the duty (100%) determined in accordance with the Customs Act.

	Permits issued as of September 10, 2005		
	2005/2006	2004/2005	% chg
Utilization (kg)	638,586	441,951	44.5
Balance (kg)	2,331,414	2,528,049	-7.8
% Utilization	21.5%	14.9%	44.5

Prepared by: Red Meat Section, Agriculture and Agri-Food Canada

Contact: Patti Negrave (613) 759-6216 or see us at: <http://www.agr.ca/redmeat>



# Hog Statistics at a Glance CANADA

## Canadian Hog Slaughter by Province of Origin

Total Slaughter Year to Date September 10, 2005

Week ending September 10, 2005

	2005	2004	% chg	2005	2004	% chg
British Columbia	169,031	169,788	-0.4	8,471	4,922	72.1
Alberta	2,398,243	2,372,130	1.1	52,536	63,589	-17.4
Saskatchewan	857,565	916,815	-6.5	15,931	25,562	-37.7
Manitoba	2,831,845	2,686,727	5.4	63,861	80,581	-20.7
Ontario	3,623,597	3,645,109	-0.6	88,027	112,399	-21.7
Quebec	5,047,885	5,216,489	-3.2	124,957	152,238	-17.9
New Brunswick	104,233	111,528	-6.5	1,811	2,762	-34.4
Nova Scotia	126,855	137,405	-7.7	3,551	3,671	-3.3
Prince Edward Island	142,592	156,590	-8.9	3,498	4,656	-24.9
<b>CANADA</b>	<b>15,301,846</b>	<b>15,412,581</b>	<b>-0.7</b>	<b>362,643</b>	<b>450,380</b>	<b>-19.5</b>

## UNITED STATES

Year To Date for the Week Ending September 10, 2005

### Supply Summary

	2005	2004	% chg
Slaughter ('000 head)	69,224	69,651	-0.6
Slaughter for the week	1,827	2,006	-8.9
Avg Dressed Wt (lbs)	196	198	-1.0
Pork Produced (mil lbs)	13,799	13,795	0.0

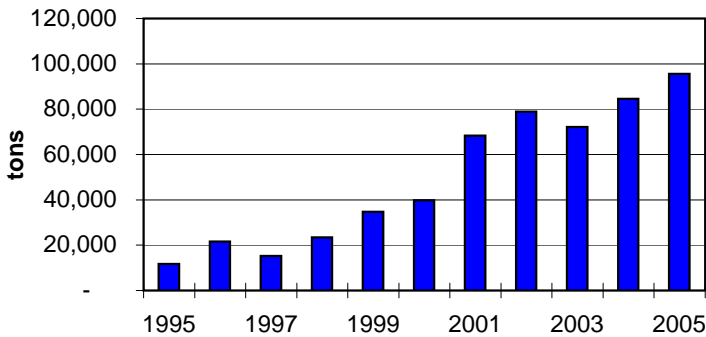
Source: USDA-APHIS

### Weekly US Prices (\$/cwt)

	2005	2004	% chg
South St. Joseph	42.25	51.25	-17.6
Sioux Falls	n/a	51.00	
Oklahoma City	42.00	48.00	-12.5
National Cost	63.84	70.19	-9.0

(51-54% Lean Yield Basis)

Canadian Pork Exports to Japan  
January - May



Total Japanese Pork Imports  
January - May

