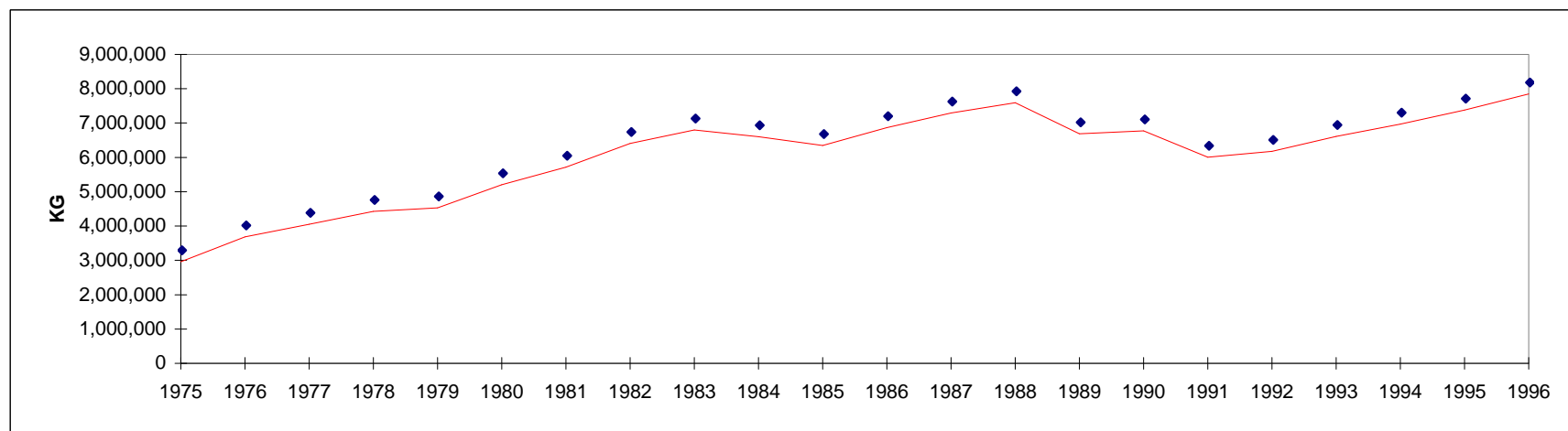


**TABLE 30:
DUCKS AND GEESE SLAUGHTERED IN REGISTERED STATIONS
NUMBERS AND EVisCERATED WEIGHT EQUIVALENT**

YEAR ANNÉE	Head - Têtes	Kg.
1975	1,345,802	2,959,787
1976	1,611,402	3,684,792
1977	1,772,034	4,048,726
1978	1,856,933	4,423,800
1979	1,985,526	4,528,988
1980	2,252,150	5,201,649
1981	2,344,681	5,714,297
1982	2,598,781	6,403,035
1983	2,730,655	6,799,831
1984	2,780,052	6,598,731
1985	2,798,101	6,344,451
1986	3,002,134	6,871,398
1987	3,065,525	7,292,571
1988	3,263,778	7,595,291
1989	2,755,684	6,687,364
1990	2,815,732	6,772,818
1991	2,616,566	6,002,848
1992	2,639,436	6,177,533
1993	2,835,356	6,608,352
1994	3,084,187	6,966,486
1995	3,364,875	7,380,287
1996	3,619,384	7,852,050

**TABLEAU 30:
CANARDS ET OIES ABATTUES AUX POSTES ENREGISTRÉS
NOMBRE ET ÉQUIVALENT EN POIDS ÉVISCÉRÉ**

CANADA 1996		CANADA	
	Head - Têtes	Kg.	
January	282,964	565,292	janvier
February	253,870	509,862	février
March	252,313	495,127	mars
April	263,669	529,556	avril
May	270,495	545,788	mai
June	277,348	559,234	juin
July	328,602	649,353	juillet
August	365,159	863,610	août
September	365,836	905,208	septembre
October	377,138	1,013,265	octobre
November	298,693	633,713	novembre
December	283,297	582,042	décembre
1996	3,619,384	7,852,050	1996
1995	3,364,875	7,380,287	1995



1975	2,959,787
1976	3,684,792
1977	4,048,726
1978	4,423,800
1979	4,528,988
1980	5,201,649
1981	5,714,297
1982	6,403,035
1983	6,799,831
1984	6,598,731
1985	6,344,451
1986	6,871,398
1987	7,292,571
1988	7,595,291
1989	6,687,364
1990	6,772,818
1991	6,002,848
1992	6,177,533
1993	6,608,352
1994	6,966,486
1995	7,380,287
1996	7,852,050