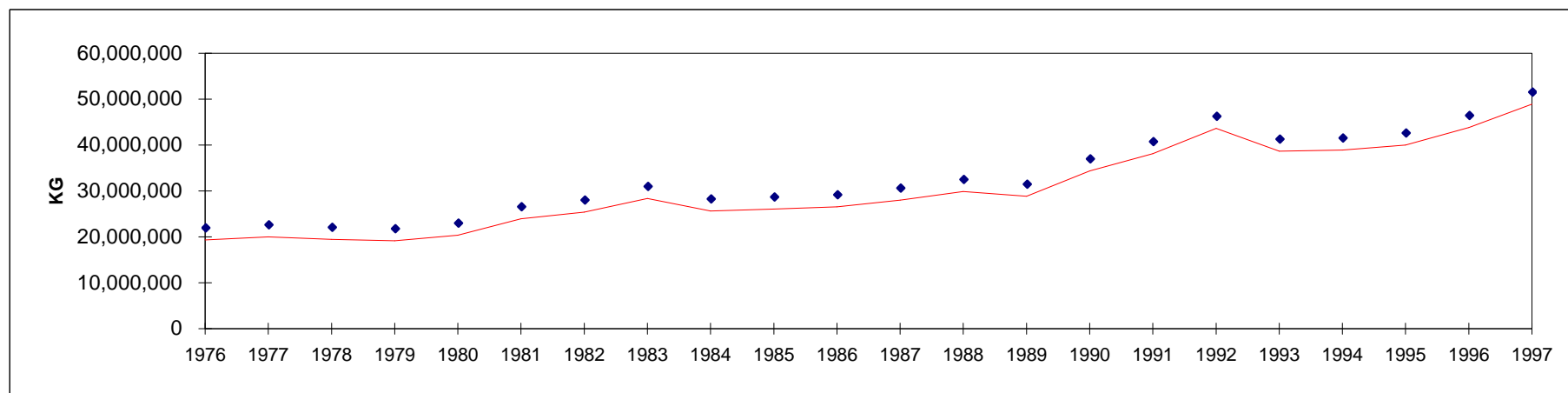


**TABLE 29:
MATURE CHICKEN SLAUGHTERED IN REGISTERED STATIONS
NUMBERS AND EVisCERATED WEIGHT EQUIVALENT**

**TABLEAU 29:
POULETS ADULTES ABATTUS AUX POSTES ENREGISTRÉS
NOMBRE ET ÉQUIVALENT EN POIDS ÉVISCÉRÉ**

MATURE CHICKEN - POULETS ADULTES

	CANNERS - CONSERVERIE		OTHERS - AUTRES		TOTAL		
	Head - Têtes	Kg.	Head - Têtes	Kg.	Head - Têtes	Kg.	
1976	12,921,623	15,122,516	1,795,776	4,224,340	14,717,399	19,346,856	1976
1977	14,053,842	16,147,942	1,527,181	3,856,657	15,581,023	20,004,599	1977
1978	13,578,665	15,561,919	1,549,805	3,916,896	15,128,470	19,478,815	1978
1979	12,863,739	14,358,485	1,893,209	4,763,215	14,756,948	19,121,700	1979
1980	13,312,805	14,677,257	2,200,023	5,674,963	15,512,828	20,352,220	1980
1981	15,492,628	17,151,068	2,583,961	6,810,274	18,076,589	23,961,342	1981
1982	16,329,779	18,048,834	2,730,231	7,330,784	19,060,010	25,379,618	1982
1983	17,793,546	20,656,997	2,917,264	7,735,378	20,710,810	28,392,375	1983
1984	17,788,228	19,685,266	2,188,369	5,954,012	19,976,597	25,639,278	1984
1985	17,547,319	19,461,651	2,407,520	6,581,525	19,954,839	26,043,176	1985
1986	17,369,222	19,582,404	2,520,499	6,956,957	19,889,721	26,539,361	1986
1987	17,894,208	19,902,350	2,909,503	8,109,459	20,803,711	28,011,809	1987
1988	19,240,438	21,213,417	3,119,622	8,666,463	22,360,060	29,879,880	1988
1989	18,190,643	19,968,452	3,168,638	8,862,095	21,359,281	28,830,547	1989
1990	21,624,045	23,796,226	3,806,147	10,596,818	25,430,192	34,393,044	1990
1991	23,193,815	25,127,741	4,661,993	13,002,282	27,855,808	38,130,023	1991
1992	25,451,351	27,531,249	5,877,561	16,104,338	31,328,912	43,635,587	1992
1993	23,846,726	25,677,006	4,720,122	12,973,134	28,566,848	38,650,140	1993
1994	25,581,326	27,308,226	4,186,517	11,575,283	29,767,843	38,883,509	1994
1995	27,792,908	29,052,283	3,942,411	10,958,145	31,735,319	40,010,428	1995
1996	31,977,079	32,987,070	3,958,959	10,816,318	35,936,038	43,803,388	1996
1997	38,245,399	38,551,552	3,878,155	10,365,071	42,123,554	48,916,623	1997



**TABLE 29 (cont'd):
MATURE CHICKEN SLAUGHTERED IN REGISTERED STATIONS
NUMBERS AND EVisCERATED WEIGHT EQUIVALENT**

**TABLEAU 29 (suite):
POULETS ADULTES ABATTUS AUX POSTES ENREGISTRÉS
NOMBRE ET ÉQUIVALENT EN POIDS ÉVISCÉRÉ**

MATURE CHICKEN - POULETS ADULTES

CANNERS - CONSERVERIE		OTHERS - AUTRES		TOTAL	
Head - Têtes	Kg.	Head - Têtes	Kg.	Head - Têtes	Kg.

CANADA 1997 CANADA

January	2,975,888	3,000,147	302,565	808,556	3,278,453	3,808,703	janvier
February	2,741,021	2,764,548	258,257	699,033	2,999,278	3,463,581	février
March	3,423,938	3,441,480	293,613	790,087	3,717,551	4,231,567	mars
April	3,575,557	3,596,709	277,689	732,839	3,853,247	4,329,548	avril
May	3,365,060	3,408,530	398,581	1,069,435	3,763,641	4,477,965	mai
June	3,484,170	3,477,134	396,307	1,077,404	3,880,477	4,554,538	juin
July	3,032,540	3,025,996	317,970	845,621	3,350,509	3,871,616	juillet
August	3,195,440	3,236,712	273,668	752,181	3,469,108	3,988,893	août
September	3,509,629	3,587,939	351,277	940,776	3,860,906	4,528,715	septembre
October	3,564,207	3,604,924	356,531	948,552	3,920,738	4,553,477	octobre
November	2,797,775	2,847,836	363,130	953,329	3,160,906	3,801,166	novembre
December	2,580,174	2,559,597	288,566	747,258	2,868,740	3,306,855	décembre
1997	38,245,399	38,551,552	3,878,155	10,365,071	42,123,554	48,916,623	1997
1996	31,977,079	32,987,070	3,958,959	10,816,318	35,936,038	43,803,388	1996

BRITISH COLUMBIA / ALBERTA - COLOMBIE-BRITANNIQUE / ALBERTA

January	227,758	235,944	94,315	258,817	322,073	494,761	janvier
February	204,203	222,495	35,637	96,548	239,840	319,043	février
March	213,418	233,347	99,394	269,561	312,812	502,907	mars
April	222,303	244,999	56,372	147,195	278,675	392,194	avril
May	157,914	173,927	87,085	230,924	244,999	404,850	mai
June	142,146	152,802	128,818	347,828	270,964	500,630	juin
July	211,660	235,196	62,541	167,433	274,201	402,629	juillet
August	165,704	189,234	58,875	157,679	224,579	346,913	août
September	221,201	247,838	111,836	300,502	333,037	548,340	septembre
October	245,445	276,065	75,025	200,877	320,471	476,943	octobre
November	115,318	134,306	81,417	214,604	196,735	348,910	novembre
December	87,468	102,946	63,267	163,909	150,735	266,855	décembre
1997	2,214,538	2,449,099	954,582	2,555,877	3,169,121	5,004,975	1997
1996	2,476,102	2,618,642	971,323	2,638,947	3,447,425	5,257,589	1996

**TABLE 29 (cont'd):
MATURE CHICKEN SLAUGHTERED IN REGISTERED STATIONS
NUMBERS AND EVisCERATED WEIGHT EQUIVALENT**

**TABLEAU 29 (suite):
POULETS ADULTES ABATTUS AUX POSTES ENREGISTRÉS
NOMBRE ET ÉQUIVALENT EN POIDS ÉVISCÉRÉ**

MATURE CHICKEN - POULETS ADULTES

CANNERS - CONSERVERIE		OTHERS - AUTRES		TOTAL	
Head - Têtes	Kg.	Head - Têtes	Kg.	Head - Têtes	Kg.

SASKATCHEWAN - MANITOBA

January	225,114	238,154	13,274	34,929	238,389	273,083	janvier
February	259,802	281,447	10,419	27,741	270,222	309,188	février
March	163,149	171,862	21,054	57,470	184,203	229,332	mars
April	326,431	344,256	20,933	55,802	347,364	400,058	avril
May	72,807	78,049	12,260	30,297	85,067	108,346	mai
June	140,858	150,251	7,441	21,828	148,299	172,079	juin
July	151,777	158,583	30,285	80,619	182,062	239,202	juillet
August	81,091	87,857	2,575	6,845	83,666	94,702	août
September	78,306	82,615	20,664	58,333	98,970	140,948	septembre
October	77,571	79,318	9,792	25,426	87,362	104,744	octobre
November	109,240	114,443	23,653	63,787	132,893	178,230	novembre
December	111,773	114,397	5,265	13,141	117,038	127,538	décembre
1997	1,797,920	1,901,232	177,614	476,217	1,975,534	2,377,449	1997
1996	2,239,225	2,342,166	181,881	490,081	2,421,106	2,832,247	1996

ONTARIO - ONTARIO

January	2,104,609	2,057,116	144,103	377,428	2,248,712	2,434,544	janvier
February	1,945,510	1,894,347	150,837	402,229	2,096,348	2,296,575	février
March	2,576,715	2,521,126	147,561	389,261	2,724,276	2,910,387	mars
April	2,652,070	2,588,977	160,167	422,057	2,812,238	3,011,034	avril
May	2,748,093	2,729,189	242,221	652,268	2,990,314	3,381,456	mai
June	2,797,873	2,732,198	195,526	522,236	2,993,399	3,254,434	juin
July	2,529,902	2,476,947	201,802	534,403	2,731,704	3,011,350	juillet
August	2,444,430	2,401,308	152,900	422,619	2,597,330	2,823,927	août
September	2,751,573	2,757,366	160,525	421,408	2,912,098	3,178,774	septembre
October	2,668,770	2,625,305	198,582	512,441	2,867,352	3,137,746	octobre
November	2,286,900	2,293,726	185,789	473,537	2,472,689	2,767,263	novembre
December	2,073,358	2,030,993	166,537	425,118	2,239,895	2,456,111	décembre
1997	29,579,803	29,108,598	2,106,551	5,555,004	31,686,354	34,663,601	1997
1996	22,678,708	23,017,233	2,027,804	5,504,270	24,706,512	28,521,503	1996

**TABLE 29 (cont'd):
MATURE CHICKEN SLAUGHTERED IN REGISTERED STATIONS
NUMBERS AND EVisCERATED WEIGHT EQUIVALENT**

**TABLEAU 29 (suite):
POULETS ADULTES ABATTUS AUX POSTES ENREGISTRÉS
NOMBRE ET ÉQUIVALENT EN POIDS ÉVISCÉRÉ**

MATURE CHICKEN - POULETS ADULTES

CANNERS - CONSERVERIE		OTHERS - AUTRES		TOTAL	
Head - Têtes	Kg.	Head - Têtes	Kg.	Head - Têtes	Kg.

QUEBEC - QUÉBEC

January	356,515	396,462	47,487	127,637	404,002	524,099	janvier
February	327,513	361,317	42,327	117,770	369,840	479,087	février
March	412,868	448,918	24,791	71,445	437,659	520,363	mars
April	320,906	354,087	29,759	79,160	350,665	433,247	avril
May	336,504	372,302	54,238	147,971	390,742	520,273	mai
June	357,785	387,310	47,179	135,523	404,963	522,833	juin
July	133,521	149,691	23,343	63,166	156,863	212,857	juillet
August	459,570	499,804	44,547	122,473	504,117	622,277	août
September	427,726	455,745	58,252	160,533	485,978	616,278	septembre
October	503,584	541,530	58,072	165,108	561,657	706,638	octobre
November	272,372	289,594	67,402	186,997	339,774	476,591	novembre
December	307,575	311,261	46,648	125,793	354,223	437,054	décembre
1997	4,216,439	4,568,020	544,045	1,503,575	4,760,484	6,071,596	1997
1996	3,987,510	4,261,783	623,656	1,737,581	4,611,166	5,999,364	1996

ATLANTIC PROVINCES - PROVINCES ATLANTIQUES

January	61,892	72,471	3,386	9,745	65,278	82,216	janvier
February	3,992	4,943	19,036	54,746	23,028	59,689	février
March	57,787	66,227	813	2,351	58,600	68,578	mars
April	53,847	64,389	10,459	28,625	64,305	93,015	avril
May	49,741	55,063	2,777	7,976	52,518	63,039	mai
June	45,509	54,573	17,343	49,989	62,852	104,562	juin
July	5,680	5,578	0	0	5,680	5,578	juillet
August	44,645	58,509	14,771	42,565	59,416	101,074	août
September	30,823	44,375	0	0	30,823	44,375	septembre
October	68,837	82,707	15,060	44,700	83,896	127,406	octobre
November	13,945	15,767	4,869	14,404	18,815	30,172	novembre
December	0	0	6,849	19,297	6,849	19,297	décembre
1997	436,698	524,603	95,363	274,398	532,061	799,001	1997
1996	595,534	747,246	154,295	445,439	749,829	1,192,685	1996

Atlantic provinces include: New Brunswick, Nova Scotia
Prince Edward Island and Newfoundland

Provinces de l'atlantique comprennent: le Nouveau-Brunswick,
la Nouvelle-Écosse, l'Île-du-Prince-Édouard et Terre-Neuve.

Source: Canadian Food Inspection Agency, as compiled by AAFC, AID, Poultry Section
Agence canadienne d'inspection des aliments, compilé par AAC, DIA, Section de la volaille