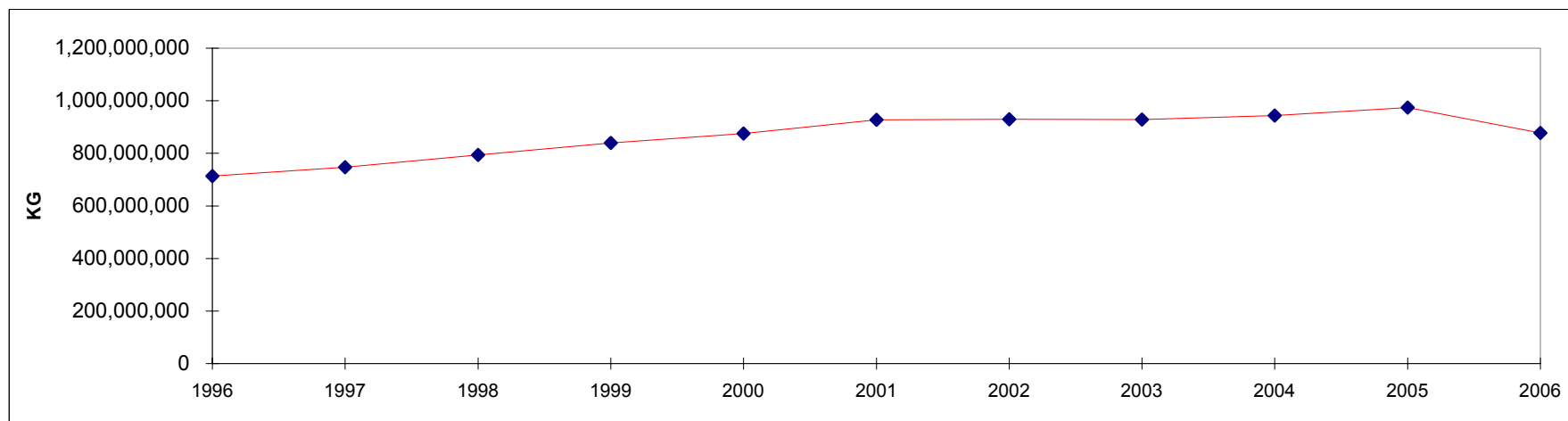


**CHICKEN SLAUGHTERED IN REGISTERED STATIONS
NUMBERS AND EVISCERATED WEIGHT EQUIVALENT**

CHICKENS - POULETS

**POULETS ABATTUS AUX POSTES ENREGISTRÉS
NOMBRE ET ÉQUIVALENT EN POIDS ÉVISCÉRÉ**

	Under 1 kg Moins de 1 kg		1 kg and under 2 kg 1 kg et moins de 2 kg		2 kg and over 2 kg et plus		TOTAL		
	Head - Têtes	Kg	Head - Têtes	Kg	Head - Têtes	Kg	Head - Têtes	Kg	
1996	3,104,314	2,103,523	446,921,772	637,924,986	30,961,075	73,953,017	480,987,161	713,981,526	1996
1997	2,853,528	1,764,234	464,900,379	671,401,530	31,027,677	73,910,868	498,781,584	747,076,632	1997
1998	2,390,609	1,484,838	490,420,518	724,225,749	28,135,612	68,401,357	520,946,739	794,111,944	1998
1999	2,430,144	1,744,810	520,388,607	768,053,109	28,485,644	69,881,737	551,304,395	839,679,656	1999
2000	1,661,233	1,131,452	539,384,635	799,133,225	30,272,592	74,766,335	571,318,460	875,031,012	2000
2001	2,957,841	2,058,929	575,740,067	851,558,301	29,383,412	74,167,139	608,081,320	927,784,369	2001
2002	3,012,617	1,985,719	577,289,172	856,587,068	27,797,352	70,698,540	608,099,141	929,271,327	2002
2003	3,331,494	2,170,742	564,721,800	847,258,190	31,356,522	79,301,490	599,409,816	928,730,422	2003
2004	2,259,635	1,535,315	561,859,601	858,270,199	32,534,662	83,793,579	596,653,898	943,599,093	2004
2005	2,514,062	1,773,365	571,901,715	880,850,622	35,523,358	91,307,689	609,939,135	973,931,677	2005
2006	2,844,815	2,123,559	513,520,649	796,634,209	30,652,105	79,101,020	547,017,565	877,858,790	2006



CHICKEN SLAUGHTERED IN REGISTERED STATIONS
NUMBERS AND EVISCERATED WEIGHT EQUIVALENT

2006
CHICKENS - POULETS

POULETS ABATTUS AUX POSTES ENREGISTRÉS
NOMBRE ET ÉQUIVALENT EN POIDS ÉVISCÉRÉ

Under 1 kg Moins de 1 kg		1 kg and under 2 kg 1 kg et moins de 2 kg		2 kg and over 2 kg et plus		TOTAL	
Head - Têtes	Kg	Head - Têtes	Kg	Head - Têtes	Kg	Head - Têtes	Kg

CANADA

January	206,193	143,384	48,659,532	76,082,345	3,533,953	8,958,727	52,399,678	85,184,456	janvier
February	229,374	163,400	44,340,394	68,759,997	2,758,083	7,156,775	47,327,851	76,080,172	février
March	336,634	229,276	48,540,701	75,446,533	2,943,441	7,656,090	51,820,776	83,331,899	mars
April	261,353	195,978	45,028,868	69,833,276	2,962,168	7,593,266	48,252,389	77,622,520	avril
May	280,489	207,068	50,408,363	78,440,612	3,094,750	8,086,191	53,783,602	86,733,871	mai
June	256,033	193,510	47,586,033	73,448,446	2,577,815	6,648,677	50,419,881	80,290,633	juin
July	266,349	204,459	49,418,184	75,476,572	2,736,695	6,977,169	52,421,228	82,658,200	juillet
August	326,232	259,024	47,672,441	73,281,032	2,207,180	5,815,924	50,205,853	79,355,980	août
September	234,213	181,770	45,785,740	71,174,704	2,825,559	7,272,975	48,845,512	78,629,449	septembre
October	243,565	190,513	47,036,457	73,729,993	2,778,113	7,172,494	50,058,135	81,093,000	octobre
November	204,380	155,179	39,043,934	60,960,698	2,234,346	5,762,733	41,482,660	66,878,610	novembre
December	0	0	0	0	0	0	0	0	décembre
2006	2,844,815	2,123,561	513,520,647	796,634,208	30,652,103	79,101,021	547,017,565	877,858,790	2006
2005	2,514,062	1,773,365	571,901,715	880,850,623	35,523,358	91,307,689	609,939,135	973,931,677	2005

BRITISH COLUMBIA - COLOMBIE-BRITANNIQUE

January	75,300	51,234	8,488,777	13,148,052	184,971	450,989	8,749,048	13,650,275	janvier
February	84,699	61,630	7,422,244	11,531,992	72,052	179,607	7,578,995	11,773,229	février
March	157,574	105,403	8,341,929	13,049,276	31,207	78,265	8,530,710	13,232,944	mars
April	133,705	94,154	7,804,665	12,242,737	58,235	133,295	7,996,605	12,470,186	avril
May	122,005	84,762	8,662,945	13,381,155	49,451	114,713	8,834,401	13,580,630	mai
June	119,042	86,823	8,150,976	12,612,593	60,005	144,704	8,330,023	12,844,120	juin
July	108,269	74,835	7,911,030	12,108,076	43,174	98,267	8,062,473	12,281,178	juillet
August	96,663	58,577	7,806,987	11,948,104	27,779	63,414	7,931,429	12,070,095	août
September	74,526	50,234	7,303,912	11,234,182	48,450	108,869	7,426,888	11,393,285	septembre
October	86,550	60,473	7,566,233	11,864,792	49,527	107,744	7,702,310	12,033,009	octobre
November	75,494	55,179	6,203,253	9,632,231	48,324	109,649	6,327,071	9,797,059	novembre
December	0	0	0	0	0	0	0	0	décembre
2006	1,133,827	783,304	85,662,951	132,753,190	673,175	1,589,516	87,469,953	135,126,010	2006
2005	1,315,285	922,291	99,774,360	152,659,618	383,385	895,848	101,473,030	154,477,757	2005

CHICKEN SLAUGHTERED IN REGISTERED STATIONS
NUMBERS AND EVISCERATED WEIGHT EQUIVALENT

2006
CHICKENS - POULETS

POULETS ABATTUS AUX POSTES ENREGISTRÉS
NOMBRE ET ÉQUIVALENT EN POIDS ÉVISCÉRÉ

Under 1 kg Moins de 1 kg		1 kg and under 2 kg 1 kg et moins de 2 kg		2 kg and over 2 kg et plus		TOTAL	
Head - Têtes	Kg	Head - Têtes	Kg	Head - Têtes	Kg	Head - Têtes	Kg

ALBERTA

January	2,686	2,559	4,426,039	7,249,783	0	0	4,428,725	7,252,342	janvier
February	2,744	2,613	3,874,333	6,310,684	0	0	3,877,077	6,313,297	février
March	1,600	1,524	4,566,331	7,451,518	1,291	2,615	4,569,222	7,455,657	mars
April	2,053	1,917	4,194,035	6,780,825	4,190	9,143	4,200,278	6,791,885	avril
May	1,900	1,810	4,689,619	7,477,833	0	0	4,691,519	7,479,643	mai
June	3,886	3,699	4,570,867	7,312,765	24,299	54,738	4,599,052	7,371,202	juin
July	2,141	2,039	4,778,743	7,497,796	501	1,015	4,781,385	7,500,850	juillet
August	3,714	3,536	4,433,681	7,069,242	1,254	2,538	4,438,649	7,075,316	août
September	2,786	2,652	4,165,189	6,662,492	0	0	4,167,975	6,665,144	septembre
October	3,043	2,897	4,476,416	7,298,335	0	0	4,479,459	7,301,232	octobre
November	3,467	3,301	3,561,394	5,808,024	0	0	3,564,861	5,811,325	novembre
December	0	0	0	0	0	0	0	0	décembre
2006	30,020	28,547	47,736,647	76,919,297	31,535	70,049	47,798,202	77,017,893	2006
2005	20,577	19,181	52,345,698	85,287,222	12,955	30,483	52,379,230	85,336,886	2005

SASKATCHEWAN / MANITOBA

January	1,563	1,490	4,262,027	6,349,927	132,292	293,917	4,395,882	6,645,334	janvier
February	1,187	498	3,705,807	5,465,427	71,260	162,604	3,778,254	5,628,529	février
March	0	0	4,241,200	6,371,357	3,840	10,509	4,245,040	6,381,866	mars
April	0	0	3,675,308	5,512,887	2,085	5,994	3,677,393	5,518,881	avril
May	1,391	1,207	4,186,230	6,256,577	3,216	8,781	4,190,837	6,266,565	mai
June	0	0	4,143,893	6,113,323	5,410	15,621	4,149,303	6,128,944	juin
July	1,650	1,611	4,569,106	6,688,854	5,919	15,457	4,576,675	6,705,922	juillet
August	1,332	1,119	4,231,178	6,321,770	10,728	29,499	4,243,238	6,352,388	août
September	0	0	4,018,472	6,061,780	19,280	50,535	4,037,752	6,112,315	septembre
October	879	719	4,377,642	6,696,831	14,809	42,450	4,393,330	6,740,000	octobre
November	2,163	1,771	3,386,116	5,144,220	7,915	18,497	3,396,194	5,164,488	novembre
December	0	0	0	0	0	0	0	0	décembre
2006	10,165	8,415	44,796,979	66,982,953	276,754	653,864	45,083,898	67,645,232	2006
2005	4,323	4,098	50,025,771	70,538,599	83,563	235,869	50,113,657	70,778,566	2005

ONTARIO

January	30,673	20,673	14,140,728	22,237,447	2,371,331	5,846,512	16,542,732	28,104,632	janvier
February	21,711	15,286	13,346,830	20,742,610	1,814,784	4,545,820	15,183,325	25,303,716	février
March	29,899	19,896	14,185,446	22,065,055	2,090,112	5,275,841	16,305,457	27,360,792	mars
April	7,162	3,935	12,732,932	19,892,766	2,019,180	4,963,840	14,759,274	24,860,541	avril
May	31,795	21,731	14,854,679	23,229,029	2,179,005	5,515,331	17,065,479	28,766,091	mai
June	8,910	5,909	14,281,194	22,107,773	1,874,099	4,753,121	16,164,203	26,866,803	juin
July	19,197	14,540	14,106,124	21,659,037	1,940,730	4,840,067	16,066,051	26,513,644	juillet
August	35,678	25,712	14,069,098	21,663,618	1,495,402	3,863,476	15,600,178	25,552,806	août
September	16,920	11,771	13,161,429	20,534,699	2,074,019	5,197,358	15,252,368	25,743,828	septembre
October	28,716	20,239	13,149,969	20,670,732	2,072,904	5,272,988	15,251,589	25,963,959	octobre
November	14,171	11,661	10,926,087	17,276,342	1,694,378	4,316,267	12,634,636	21,604,270	novembre
December	0	0	0	0	0	0	0	0	décembre
2006	244,832	171,353	148,954,516	232,079,108	21,625,944	54,390,621	170,825,292	286,641,082	2006
2005	240,073	166,800	169,964,491	262,583,511	24,225,993	60,320,189	194,430,557	323,070,500	2005

CHICKEN SLAUGHTERED IN REGISTERED STATIONS
NUMBERS AND EVISCERATED WEIGHT EQUIVALENT

2006
CHICKENS - POULETS

POULETS ABATTUS AUX POSTES ENREGISTRÉS
NOMBRE ET ÉQUIVALENT EN POIDS ÉVISCÉRÉ

Under 1 kg Moins de 1 kg		1 kg and under 2 kg 1 kg et moins de 2 kg		2 kg and over 2 kg et plus		TOTAL	
Head - Têtes	Kg	Head - Têtes	Kg	Head - Têtes	Kg	Head - Têtes	Kg

QUEBEC - QUÉBEC

January	95,971	67,428	13,175,841	20,806,093	820,926	2,302,917	14,092,738	23,176,438	janvier
February	119,033	83,373	12,153,049	18,938,509	780,418	2,218,789	13,052,500	21,240,671	février
March	135,729	94,178	12,994,957	20,185,132	790,523	2,217,187	13,921,209	22,496,497	mars
April	116,461	94,593	12,658,005	19,447,889	860,453	2,434,698	13,634,919	21,977,180	avril
May	123,398	97,558	13,557,847	21,369,700	840,212	2,382,434	14,521,457	23,849,692	mai
June	124,195	97,079	12,151,733	18,930,124	591,066	1,619,150	12,866,994	20,646,353	juin
July	135,092	111,434	13,618,788	20,967,290	724,926	1,967,443	14,478,806	23,046,167	juillet
August	188,845	170,080	12,867,348	19,966,040	645,731	1,787,132	13,701,924	21,923,252	août
September	139,981	117,113	12,932,875	20,431,591	670,347	1,887,975	13,743,203	22,436,679	septembre
October	124,377	106,185	13,223,240	20,789,885	621,156	1,707,614	13,968,773	22,603,684	octobre
November	109,085	83,267	11,449,450	17,873,976	469,167	1,287,281	12,027,702	19,244,524	novembre
December	0	0	0	0	0	0	0	0	décembre
2006	1,412,167	1,122,288	140,783,133	219,706,229	7,814,925	21,812,620	150,010,225	242,641,137	2006
2005	933,804	660,995	149,252,062	234,037,503	10,542,134	29,055,876	160,728,000	263,754,374	2005

ATLANTIC PROVINCES - PROVINCES DE L'ATLANTIQUE

January	0	0	4,166,120	6,291,043	24,433	64,392	4,190,553	6,355,435	janvier
February	0	0	3,838,131	5,770,775	19,569	49,955	3,857,700	5,820,730	février
March	11,832	8,275	4,210,838	6,324,195	26,468	71,673	4,249,138	6,404,143	mars
April	1,972	1,379	3,963,923	5,956,172	18,025	46,296	3,983,920	6,003,847	avril
May	0	0	4,457,043	6,726,318	22,866	64,932	4,479,909	6,791,250	mai
June	0	0	4,287,370	6,371,868	22,936	61,343	4,310,306	6,433,211	juin
July	0	0	4,434,393	6,555,519	21,445	54,920	4,455,838	6,610,439	juillet
August	0	0	4,264,149	6,312,258	26,286	69,865	4,290,435	6,382,123	août
September	0	0	4,203,863	6,249,960	13,463	28,238	4,217,326	6,278,198	septembre
October	0	0	4,242,957	6,409,418	19,717	41,698	4,262,674	6,451,116	octobre
November	0	0	3,517,634	5,225,905	14,562	31,039	3,532,196	5,256,944	novembre
December	0	0	0	0	0	0	0	0	décembre
2006	13,804	9,654	45,586,421	68,193,431	229,770	584,351	45,829,995	68,787,436	2006
2005	0	0	50,539,333	75,744,170	275,328	769,424	50,814,661	76,513,594	2005

ATLANTIC PROVINCES INCLUDE :

New Brunswick, Nova Scotia, Prince Edward Island and Newfoundland

LES PROVINCES DE L'ATLANTIQUE COMPRENNENT:

Le Nouveau-Brunswick, la Nouvelle-Écosse, l'Île-du-Prince-Édward et Terre-Neuve

Source: Canadian Food Inspection Agency, as compiled by AAFC, AID, Poultry Section
Agence canadienne d'inspection des aliments, compilé par AAC, DIA, Section de la volaille

Printed as of / Imprimé le: 2006/12/01